



IDLER PULLEYS AND SPROCKETS

Catalogue



Contents



Aetna High Speed Idler Pulleys

Single Row Bearing	
<i>V-belt Idlers</i>	4
<i>Flat Flanged Idlers</i>	5

Double Row Bearing	
<i>Flat Faced Idlers</i>	6
<i>Flat Flanged Idlers</i>	7

Aetna Heavy Duty Idler Pulleys

<i>V-belt Idlers</i>	8
<i>Round Belt Idlers</i>	9
<i>Flat Faced Idlers</i>	10
<i>Flat Single Flange Idlers</i>	11
<i>Flat Flanged Idlers</i>	12

Aetna Idler Sprockets

<i>Detachable Chain Idlers</i>	13
<i>Double Pitch Chain Idlers</i>	14
<i>Heavy Duty Double Pitch Chain Idlers</i>	15
<i>Single Pitch Chain Idlers</i>	16

Aetna Tyre Idlers	17
--------------------------------	----



Don Dye Single Row Bearing Idler Pulleys

<i>V-belt Idlers</i>	18
<i>Flat Flanged Idlers</i>	20

Don Dye Double Row Bearing Idler Pulleys

<i>V-belt Idlers</i>	22
<i>Flat Flanged Idlers</i>	23
<i>Flat Faced Idlers</i>	24

Part Number Index	26
--------------------------------	----

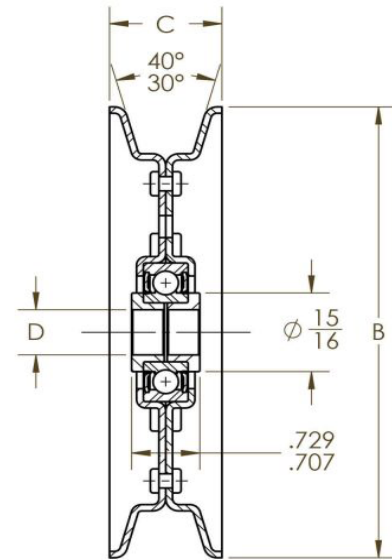
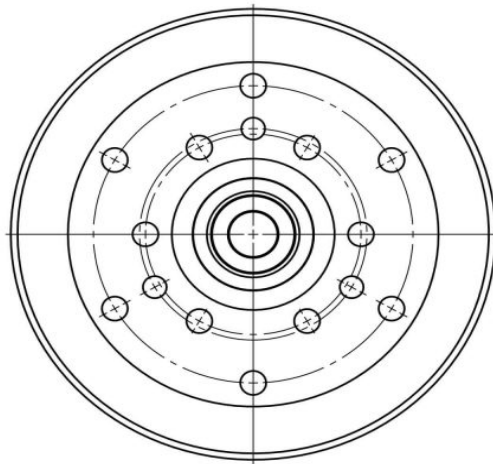
High Speed Pulleys - Single Row Bearings

They are used in heavy duty applications where loads and speeds are greater than required for unground bearings—usually over 2000 RPM. Many are used on modern combines and hay baling equipment. Aetna V-belt idlers are available with single row bearings with a bore size to clear 1/2 and 5/8 bolts. Aetna belt idlers are generally used as tensioners or direction changers. Permanently lubricated and sealed against grime and dirt. Fit into existing design with little or no engineering changes or are readily adapted to new designs.

ADVANTAGES

- Heavy gauge precision formed steel with double row of steel rivets with strengthening rib
- Precision bearing for high capacity, lubricated and sealed for life
- Solid steel bushing to provide proper mounting clearance
- “Weep” holes to prevent water build-up
- Basic radial load rating of precision bearing is 1,820 pounds

V-Belt Idlers



PART NO.	UNIT	BELT SIZE	B	C	D
B13516-A	Inch	B	4-3/8	1	.510/.515
	mm		111.125	25.4	12.954/13.081
B13516-B	Inch	B	4-3/8	1	.635/.640
	mm		111.125	25.4	16.129/16.256
C15919-B9**	Inch	C	7-5/16	1-3/16	.635/.640
	mm		185.737	40.037	16.129/16.256

**Zinc Plated Yellow Hexavalent Chromium Finish

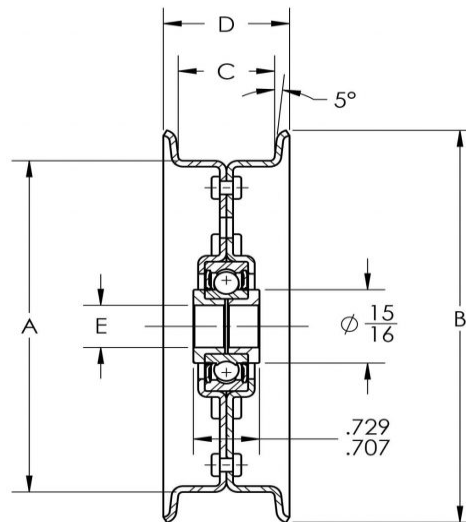
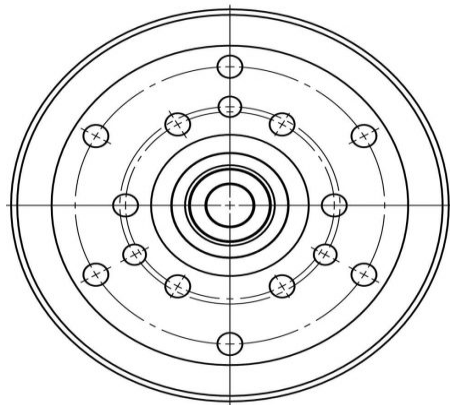
High Speed Pulleys - Single Row Bearings

They are used in heavy duty applications where loads and speeds are greater than required for unground bearings—usually over 2000 RPM. Many are used on modern combines and hay baling equipment. Aetna V-belt idlers are available with single row bearings with a bore size to clear 1/2 and 5/8 bolts. Aetna belt idlers are generally used as tensioners or direction changers. Permanently lubricated and sealed against grime and dirt. Fit into existing design with little or no engineering changes or are readily adapted to new designs.

ADVANTAGES

- Heavy gauge precision formed steel with double row of steel rivets with strengthening rib
- Precision bearing for high capacity, lubricated and sealed for life
- Solid steel bushing to provide proper mounting clearance
- “Weep” holes to prevent water build-up
- Basic radial load rating of precision bearing is 1,820 pounds

Flat Flanged Idlers



PART NO.	UNIT	A	B	C	D	E
F14026-B	Inch	5	5-3/4	1-5/8	2-1/16	.635/.640
	mm	127	146.06	41.275	52.387	16.129/16.256
F14416-A	Inch	5-1/2	6-1/4	1	1-7/16	.510/.515
	mm	139.7	158.75	25.4	36.512	12.954/13.081
F14416-B	Inch	5-1/2	6-1/4	1	1-7/16	.635/.640
	mm	139.7	158.75	25.4	36.512	16.129/16.256
F16416-B	Inch	8	9	1	1-7/16	.635/.640
	mm	203.2	228.6	25.4	36.512	16.129/16.256
F16424-B6*	Inch	8	9	1-1/2	1-15/16	.635/.640
	mm	203.2	228.6	38.1	49.212	16.129/16.256

***Zinc Plated Yellow Hexavalent Chromium Finish*

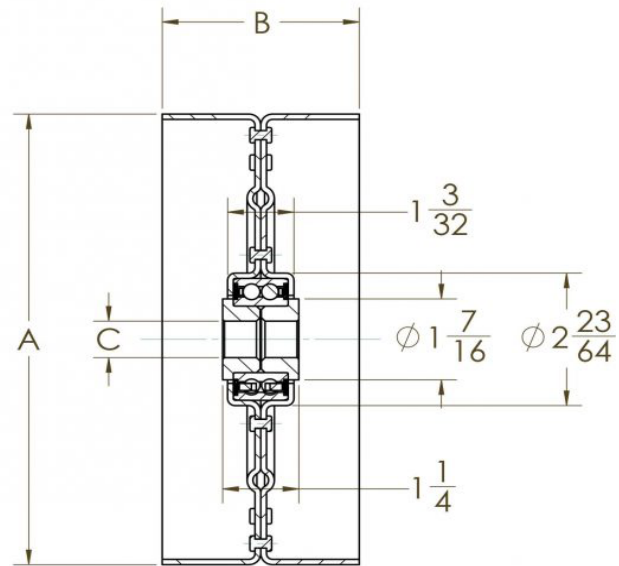
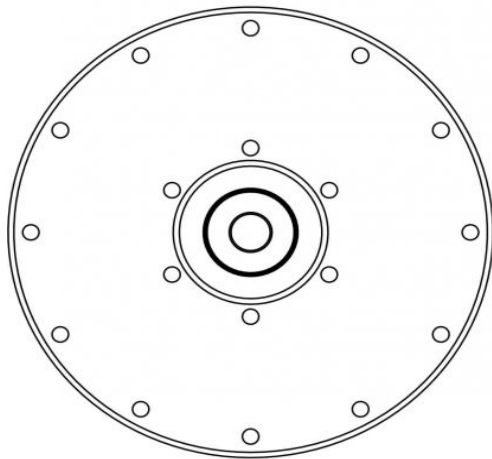
High Speed Pulleys - Double Row Bearings

They are used in heavy duty applications where loads and speeds are greater than required for unground bearings—usually over 2000 RPM. Many are used on modern combines. Aetna straight belt idlers for flat belts are available with double row bearings and bushed to clear 1/2, 5/8 and 3/4 bolts. Aetna belt idlers are generally used as tensioners or direction changers. Permanently lubricated and sealed against grime and dirt. Fit into existing design with little or no engineering changes or are readily adapted to new designs.

ADVANTAGES

- Heavy gauge precision formed steel with annular strengthening rib. Double row of steel rivets
- Double row lubricated for life sealed precision angular contact bearing for higher capacity and rigidity
- Steel bushing to provide proper bolt clamping and centering
- Basic radial load rating of precision bearing is 3,340 pounds

Flat Face Idlers



PART NO.	UNIT	A	B	C
S24032-A	Inch	5	2	.516/.522
	mm	127	50.8	13.0164/13.2588
S24032-B	Inch	5	2	.643/.649
	mm	127	50.8	16.3322/16.4846
S25252-A	Inch	6-1/2	3-1/4	.516/.522
	mm	165.1	82.55	13.0164/13.2588
S25252-C	Inch	6-1/2	3-1/4	.769/.775
	mm	165.1	82.55	19.5326/19.685
S26452-B6**	Inch	8	3-1/4	.643/.649
	mm	203.2	82.55	16.3322/16.4846
S28052-B	Inch	10	3-1/4	.643/.649
	mm	254	82.55	16.3322/16.4846

**Zinc Plated Yellow Hexavalent Chromium Finish

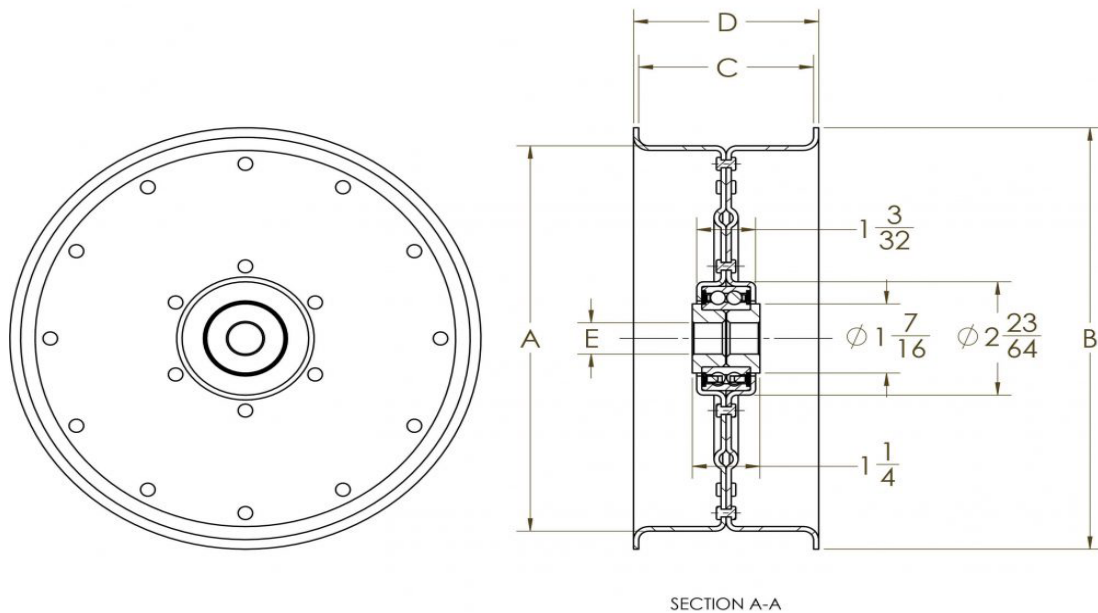
High Speed Pulleys - Double Row Bearings

They are used in heavy duty applications where loads and speeds are greater than required for unground bearings—usually over 2000 RPM. Many are used on modern combines. Aetna straight belt idlers for flat belts are available with double row bearings and bushed to clear 1/2, 5/8 and 3/4 bolts. Aetna belt idlers are generally used as tensioners or direction changers. Permanently lubricated and sealed against grime and dirt. Fit into existing design with little or no engineering changes or are readily adapted to new designs.

ADVANTAGES

- Heavy gauge precision formed steel with annular strengthening rib. Double row of steel rivets
- Double row lubricated for life sealed precision angular contact bearing for higher capacity and rigidity
- Steel bushing to provide proper bolt clamping and centering
- Basic radial load rating of precision bearing is 3,340 pounds

Flat Flanged Idlers



PART NO.	UNIT	A	B	C	D	E
F26448-B6**	Inch	8	8-3/4	3	3-3/16	.643/.649
	mm	203.2	222.25	76.2	80.962	16.332/16.484
F26452-B9**	Inch	8	8-3/4	3-1/4	3-7/16	.643/.649
	mm	203.2	222.25	82.55	87.312	16.332/16.484

**Zinc Plated Yellow Hexavalent Chromium Finish

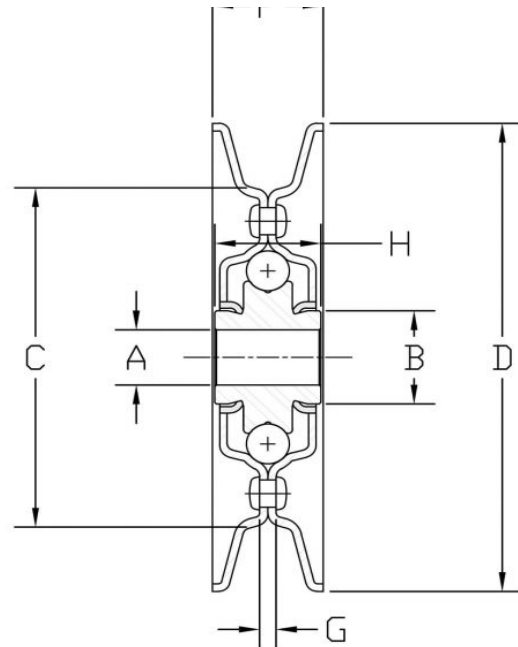
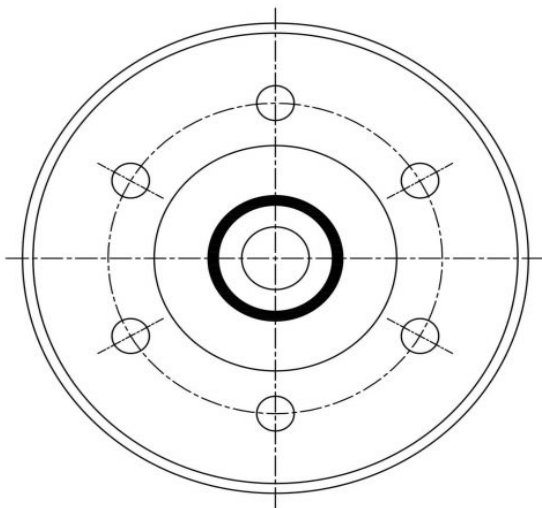
4 Point Heavy Duty Pulleys

Provide long life under demanding conditions. They are installed with standard 1/2 or 5/8 bolts. Applications include agricultural, power transmission equipment, and conveyor systems. Aetna V-belt idlers are generally used as tensioners or direction changers. Permanently lubricated and sealed against grime and dirt. Fit into existing designs with little or no engineering changes, or are readily adapted to new designs.

ADVANTAGES

- Over-size, factory packed lubricant chamber assures maximum life and operating efficiency without troublesome relubrication
- Case hardened to resist belt abrasion
- Available for most common V-belt sizes
- Bearing races are hardened to resist wear, outers and inners are accurately formed for smooth running
- Aetna's self-contouring, free-running, self-wiping seal provides positive contact under all conditions of misalignment
- Full ball complement for high durability

V-Belt Idlers



PART NO.	UNIT	A	B	C	D	BELT SIZE	F	G	H	WEIGHT (LBS / kg)
AG2321	Inch	.643/.649	1-3/16	2-1/4	3-1/4	A	7/8	.144	.750	.75
	mm	16.332/16.484	30.162	57.15	82.55		22.225	3.657	19.05	.340
AG2321-A	Inch	.516/.522	1-3/16	2-1/4	3-1/4	A	7/8	.144	.750	.78
	mm	13.016/13.258	30.162	57.15	82.55		22.225	3.657	19.05	.359
AG2421	Inch	.643/.649	7/8	3-7/32	4-13/32	B	31/32	.144	.927	.98
	mm	16.332/16.484	22.225	81.756	111.918		24.606	3.657	23.545	.444
AG2421-A	Inch	.516/.522	7/8	3-7/32	4-13/32	B	31/32	.144	.927	1.01
	mm	13.016/13.258	22.225	81.756	111.918		24.606	3.657	23.545	.458
AG2621	Inch	.643/.649	7/8	3-13/16	5-3/4	A, B, and C	1-5/32	.190	.927	1.52
	mm	16.332/16.484	22.225	96.837	146.05		29.368	4.826	23.545	0.694
AG2621-A	Inch	.516/.522	7/8	3-13/16	5-3/4	A, B, and C	1-5/32	.190	.927	1.55
	mm	13.016/13.258	22.225	96.837	146.05		29.368	4.826	23.545	0.703
AG2721	Inch	.643/.649	7/8	5-7/32	7	B and C	1-5/32	.190	.927	2.00
	mm	16.332/16.484	22.225	132.556	177.8		29.368	4.826	23.545	0.907

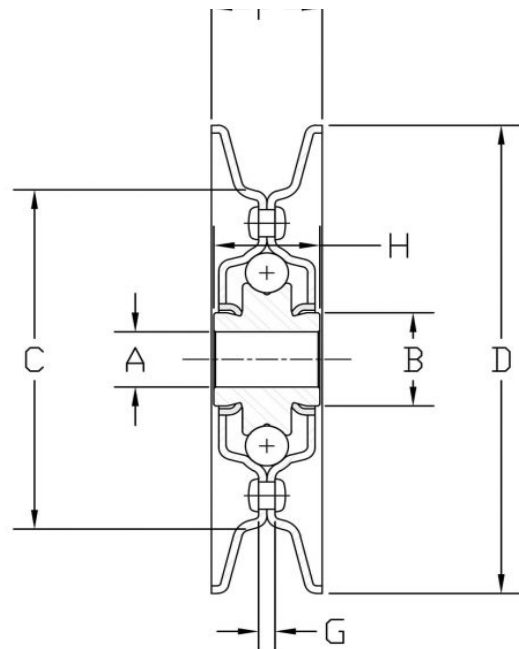
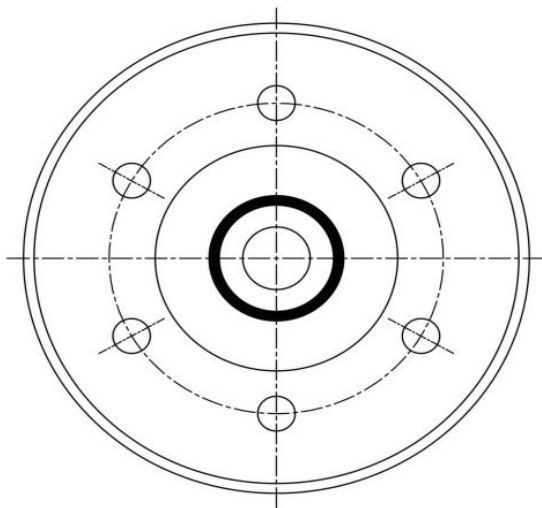
4 Point Heavy Duty Pulleys

Provide long life under demanding conditions. They are installed with standard 1/2" or 5/8" bolts. Applications include agricultural, power transmission and material handling equipment. Aetna round belt idlers are generally used as tensioners or direction changers. Permanently lubricated and sealed against grime and dirt. Fit into existing designs with little or no engineering changes, or are readily adapted to new designs.

ADVANTAGES

- Over-size, factory packed lubricant chamber assures maximum life and operating efficiency without troublesome relubrication
- Case hardened to resist belt abrasion
- Bearing races are hardened to resist wear, outers and inners are accurately formed for smooth running
- Aetna's self-contouring, free-running, self-wiping seal provides positive contact under all conditions of misalignment

Round Belt Idlers



PART NO.	UNIT	A	B	C	D	BELT DIA	F	G	H	WEIGHT (LBS / kg)
AG2331	Inch	.643/.649	1-3/16	3" Belt	3-1/4	15/32	13/16	.144	.750	.70
	mm	16.332/16.484	30.162	76.2 belt	82.55	11.906	20.637	3.657	19.05	.317
AG2331-A	Inch	.516/.522	1-3/16	3" Belt	3-1/4	15/32	13/16	.144	.750	.73
	mm	13.016/13.258	30.162	76.2 belt	82.55	11.906	20.637	3.657	19.05	.331

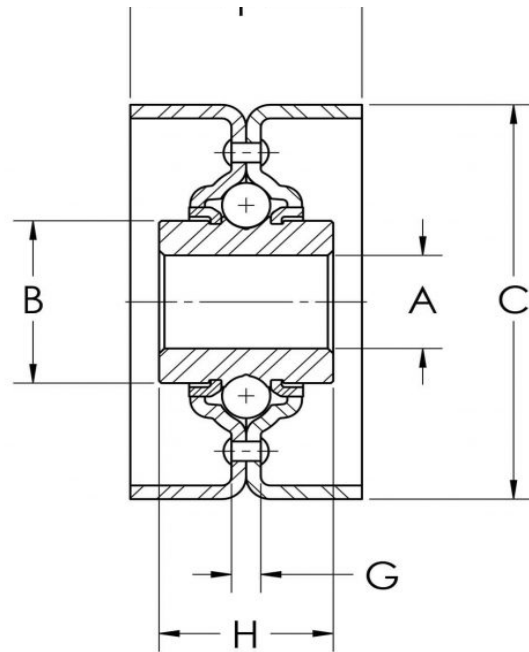
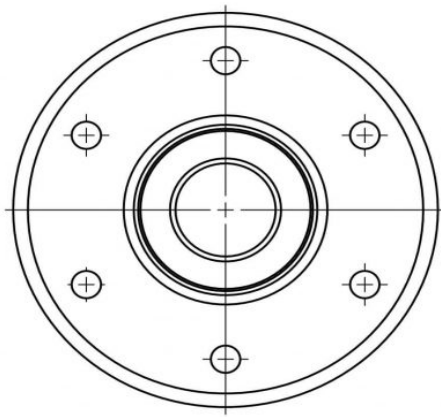
4 Point Heavy Duty Pulleys

Provide long life under demanding conditions. They are installed with standard 1/2 or 5/8 bolts. Applications include agricultural, power transmission equipment, and conveyor systems. Aetna belt idlers are generally used as tensioners or direction changers. Permanently lubricated and sealed against grime and dirt. Fit into existing designs with little or no engineering changes, or are readily adapted to new designs.

ADVANTAGES

- Over-size, factory packed lubricant chamber assures maximum life and operating efficiency without troublesome relubrication
- Case hardened to resist belt abrasion
- Available for most common belt sizes
- Bearing races are hardened to resist wear, outers and inners are accurately formed for smooth running
- Aetna's self-contouring, free-running, self-wiping seal provides positive contact under all conditions of misalignment
- Full ball complement for high durability

Flat Face Idlers



PART NO.	UNIT	A	B	C	F	G	H	WEIGHT (LBS / kg)
AG2367-A	Inch	.516/.522	1-3/16	2-3/4	1-1/2	1.90	1.125	.83
	mm	13.106/13.258	30.1625	69.85	38.1	48.26	28.575	.376

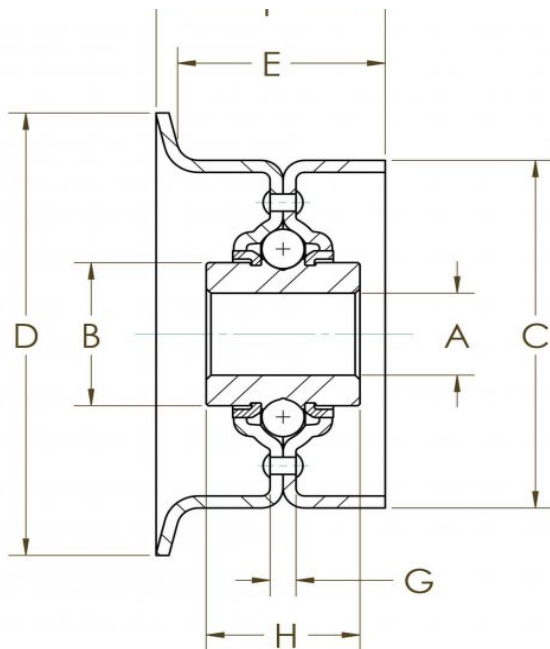
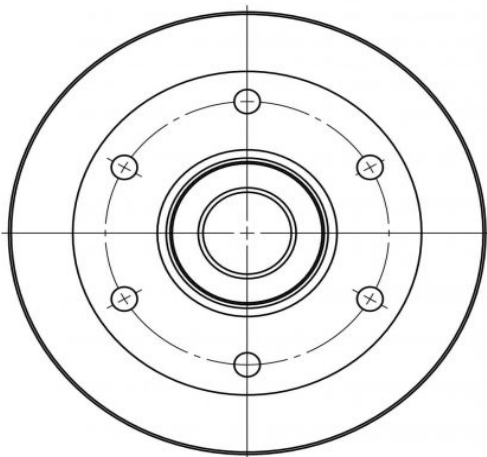
4 Point Heavy Duty Pulleys

Provide long life under demanding conditions. They are installed with standard 1/2 or 5/8 bolts. Applications include agricultural, power transmission equipment, and conveyor systems. Aetna V-belt idlers are generally used as tensioners or direction changers. Permanently lubricated and sealed against grime and dirt. Fit into existing designs with little or no engineering changes, or are readily adapted to new designs.

ADVANTAGES

- Over-size, factory packed lubricant chamber assures maximum life and operating efficiency without troublesome relubrication
- Case hardened to resist belt abrasion
- Available for most common V-belt sizes
- Bearing races are hardened to resist wear, outers and inners are accurately formed for smooth running
- Aetna's self-contouring, free-running, self-wiping seal provides positive contact under all conditions of misalignment
- Full ball complement for high durability

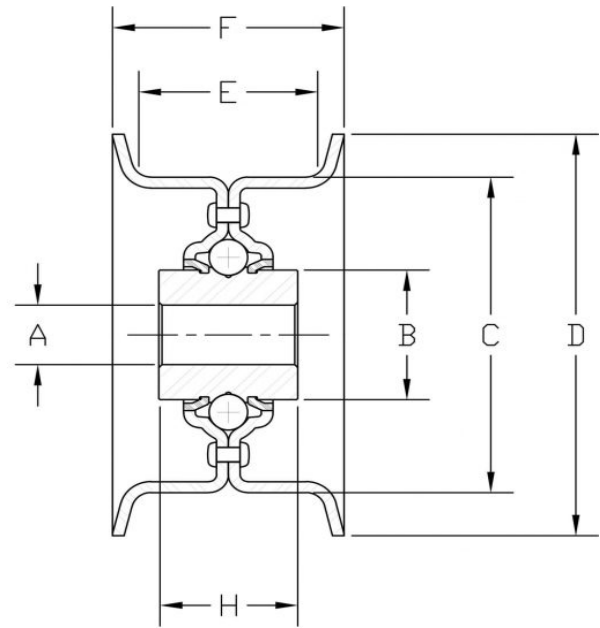
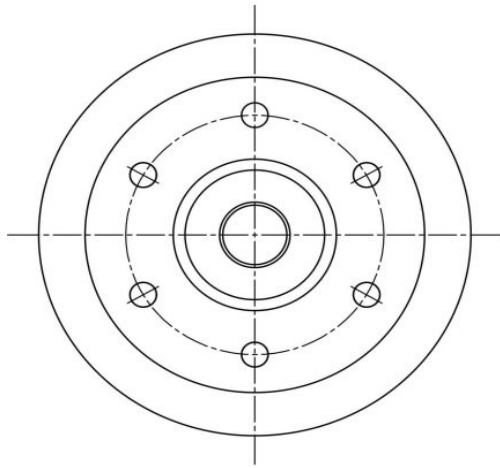
Flat Single Flange Idlers



PART NO.	UNIT	A	B	C	D	E	F	G	H	WEIGHT (LBS)
AG2365-1AM*	Inch	.516/.522	1-3/16	2-3/4	3-1/2	1-1/2	1-11/16	.190	1.125	1.03
	mm	13.106/13.258	30.162	69.85	88.9	38.1	42.862	4.826	28.575	0.467
AG2365-A	Inch	.516/.522	1-3/16	2-3/4	3-1/2	1-1/2	1-11/16	.190	1.125	1.03
	mm	13.106/13.258	30.162	69.85	88.9	38.1	42.862	4.826	28.575	0.467

*Includes Felt & Slinger Seals

Flat Flanged Idlers



PART NO.	UNIT	A	B	C	D	E	F	G	H	WEIGHT (LBS / kg)
AG2352	Inch	.643/.649	1-3/16	2-7/8	3-1/4	11/16	27/32	.144	.750	.70
	mm	16.332/16.484	30.162	73.025	82.55	17.462	21.431	3.657	19.05	.317
AG2352-A	Inch	.516/.522	1-3/16	2-7/8	3-1/4	11/16	27/32	.144	.750	.73
	mm	13.106/13.258	46.037	73.025	82.55	17.462	24.431	3.657	19.05	.331
AG2354-AS	Inch	.516/.522	15/16	2-3/4	3-7/16	1	1-13/32	.144	1.125	.68
	mm	13.106/13.258	23.812	69.85	87.312	25.4	35.718	3.657	28.575	.308
AG2354-FK	Inch	.516/.522	15/16	2-3/4	3-7/16	1	1-13/32	.144	.927	.61
	mm	13.106/13.258	23.812	69.85	87.312	25.4	35.718	3.657	23.545	.276
AG2362-A*	Inch	.516/.522	1-3/16	2-3/4	3-1/2	1-1/2	1-7/8	.190	1.125	1.51
	mm	13.106/13.258	46.037	69.85	88.9	38.1	47.625	4.826	28.575	.684
AG2362-S*	Inch	.643/.649	1-3/16	2-3/4	3-1/2	1-1/2	1-7/8	.190	1.125	1.44
	mm	16.332/16.484	46.037	69.85	88.9	38.1	47.625	4.826	28.575	.653
AG2366-AS	Inch	.516/.522	1-1/8	2-7/8	3-1/4	11/16	27/32	.144	1.125	.75
	mm	13.106/13.258	28.575	73.025	82.55	17.462	21.431	3.657	28.575	.340
AG2413	Inch	.643/.649	7/8	4	4-29/64	1-1/8	1-3/8	.144	.927	1.25
	mm	16.332/16.484	22.225	101.6	113.109	28.575	34.925	3.657	23.545	.566
AG2413-A	Inch	.516/.522	7/8	4	4-29/64	1-1/8	1-3/8	.144	.927	1.28
	mm	13.106/13.258	22.225	101.6	113.109	28.575	34.925	3.657	23.545	.580
AG2452	Inch	.643/.649	7/8	4-1/4	4-5/8	3/4	1-1/32	.144	.927	1.21
	mm	16.332/16.484	22.225	107.95	117.475	19.05	26.193	3.657	23.545	0.548
AG2452-A	Inch	.516/.522	7/8	4-1/4	4-5/8	3/4	1-1/32	.144	.927	1.24
	mm	13.106/13.258	22.225	107.95	117.475	19.05	26.193	3.657	23.545	0.562
AG2613	Inch	.643/.649	7/8	6	7	1	1-3/8	.144	.927	2.00
	mm	16.332/16.484	22.225	152.4	177.8	25.4	34.925	3.657	23.545	0.907
AG2613-13**	Inch	.643/.649	7/8	6	7	1	1	.144	.927	2.03
	mm	16.332/16.484	22.225	152.4	177.8	25.4	25.4	3.657	23.545	.920
AG2613-A	Inch	.516/.522	7/8	6	7	1	1-3/8	.144	.927	2.03
	mm	13.106/13.258	22.225	152.4	177.8	25.4	34.925	3.657	23.545	.920
AG2814	Inch	.643/.649	7/8	8	8-3/4	1-1/8	1-19/32	.144	.927	3.38
	mm	16.332/16.484	22.225	203.2	222.25	28.575	40.481	3.657	23.545	1.553

*Extra Heavy Gauge Steel

**Zinc Plated with Oil Dip

Every effort has been taken to ensure that the data listed in this catalogue is correct. Finer Power Transmissions P/L will not accept liability for any damage or loss caused as a result of the data in this catalogue.

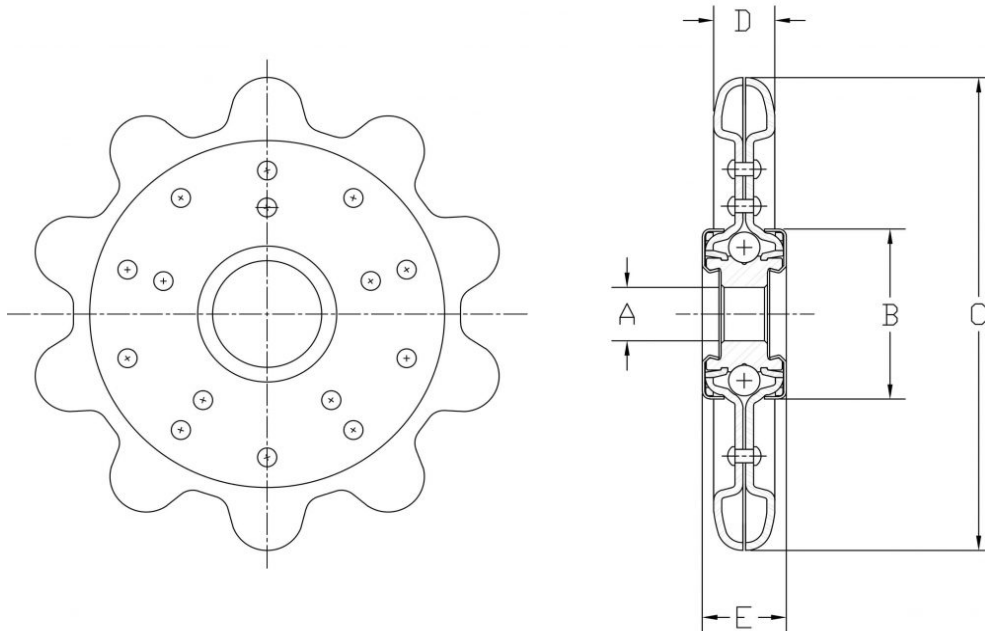
Sprocket Idlers

These sprocket idlers are designed for agricultural detachable link chain. They are installed with standard 1/2 or 5/8 bolts, and include accurately contoured hardened teeth to resist wear and damage to the chain. Aetna idlers are compact and easy to install and built for a long maintenance-free service life.

ADVANTAGES

- Case hardened teeth prolong chain and idler life. Accurately contoured teeth from heavy gauge steel
- Over-size, factory packed lubricant chamber assures maximum life and operating efficiency without troublesome relubrication
- Bearing races are hardened to resist wear, outers and inners are accurately formed for smooth running
- Aetna's self-contouring, free running, self-wiping seal provides positive contact under all conditions of misalignment
- Full ball complement for high durability

Detachable Chain Idlers



PART NO.	UNIT	CHAIN NO	PITCH	ROLLER DIA	TEETH	A	B	C	D	E	WEIGHT (LBS / kg)
AG2422	Inch	62,62H	1.654	.670 / .686	7	.643/.649	1-13/32	4-29/64	3/4	29/32	1.43
	mm			17.018/17.242		16.332/16.484	35.718	113.109	19.05	23.018	.6486
AG2422-1AF*	Inch	62,62H	1.654	.670 / .686	7	.643/.649	1-13/32	4-29/64	3/4	29/32	1.43
	mm			17.018/17.242		16.332/16.484	35.718	113.109	19.05	23.018	.6486

*Includes Felt & Slinger Seals

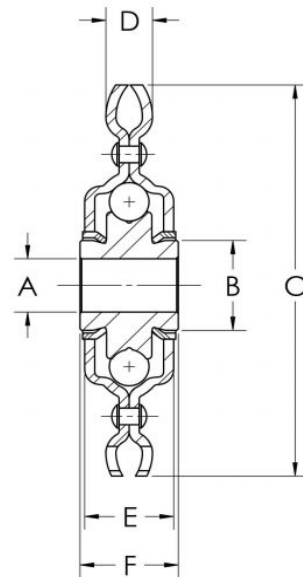
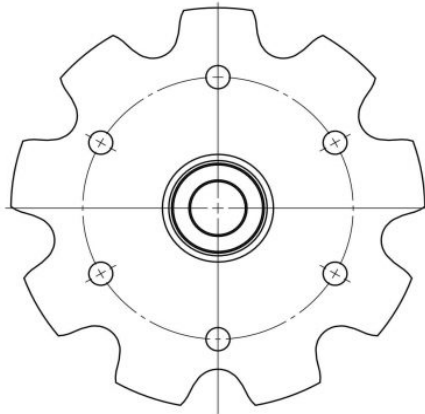
Sprocket Idlers

These sprocket idlers are designed for extended pitch chain. They are installed with standard 1/2 or 5/8 bolts, and include accurately contoured hardened teeth to resist wear and damage to the chain. Aetna idlers are compact and easy to install and built for a long maintenance-free service life. Typical applications include gathering chains on corn heads and other harvesting equipment.

ADVANTAGES

- Case hardened teeth prolong chain and idler life. Accurately contoured teeth from heavy gauge steel
- Over-size, factory packed lubricant chamber assures maximum life and operating efficiency without troublesome relubrication
- Bearing races are hardened to resist wear, outers and inners are accurately formed for smooth running
- Aetna's self-contouring, free running, self-wiping seal provides positive contact under all conditions of misalignment
- Full ball complement for high durability

Double Pitch Chain Idlers



PART NO.	UNIT	CHAIN NO	PITCH	ROLLER DIA	TEETH	A	B	C	D	E	F	WEIGHT (LBS / kg)
AG2416-B	Inch	2050	1-1/4	.400	9	.643 / .649	7/8	3-27/32	11/32	51/64	.927	.75
	mm		31.75	10.16		16.332/16.484	22.225	97.631	8.731	20.240	23.545	.340

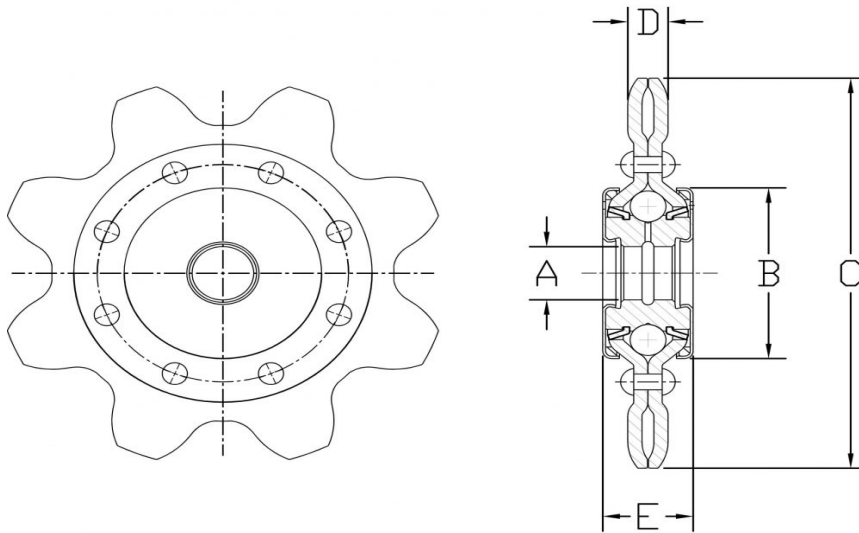
Sprocket Idlers

These sprocket idlers are designed for extended pitch chain. These Aetna idlers are manufactured with heavier gauge steel for greater life and load carrying capacity. They are installed with standard 1/2 or 5/8 bolts, and include accurately contoured hardened teeth to resist wear and damage to the chain. Aetna idlers are compact and easy to install and built for a long maintenance-free service life. Typical applications include gathering chains on corn heads and other harvesting equipment.

ADVANTAGES

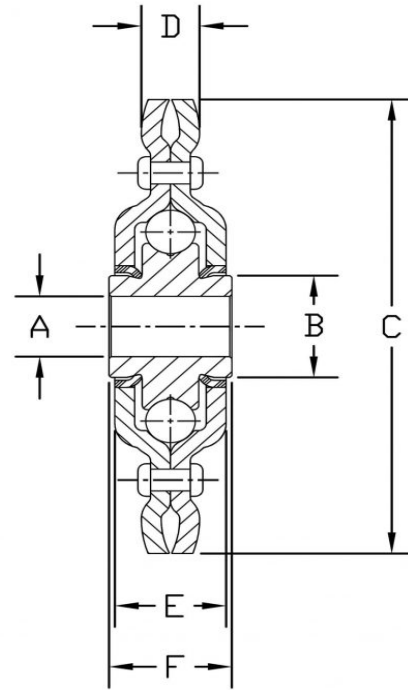
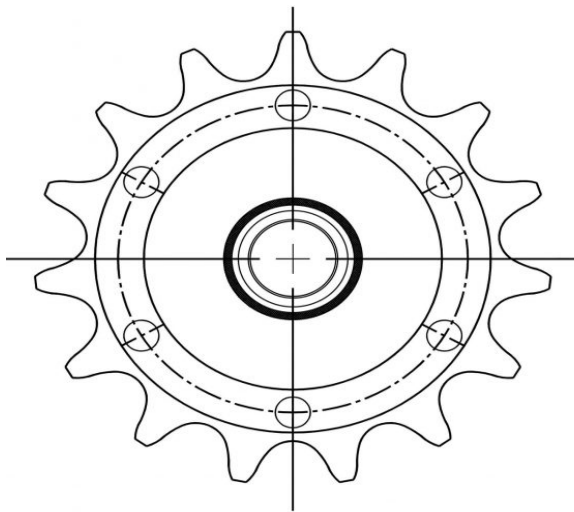
- Case hardened teeth prolong chain and idler life. Accurately contoured teeth from heavy gauge steel
- Over-size, factory packed lubricant chamber assures maximum life and operating efficiency without troublesome relubrication
- Bearing races are hardened to resist wear, outers and inners are accurately formed for smooth running
- Aetna's self-contouring, free running, self-wiping seal provides positive contact under all conditions of misalignment
- Full ball complement for high durability

Heavy Duty Double Pitch Chain Idlers



PART NO.	UNIT	CHAIN NO	PITCH	ROLLER DIA	TEETH	A	B	C	D	E	WEIGHT (LBS / kg)
AG2427	Inch	2060	1-1/2	15/32	8	.643/.649	7/8	4-7/32	7/16	.927	1.13
	mm		38.1	11.906		16.332/16.484	22.225	107.156	11.112	23.545	.512
AG2427-AM	Inch	2060	1-1/2	15/32	8	.516/.522	2-5/64	4-7/32	7/16	31/32	1.50
	mm		38.1	11.906		13.106/13.258	52.784	107.156	11.112	24.606	.680
AG2427-AF	Inch	2060	1-1/2	15/32	8	.643/.649	2-5/64	4-7/32	7/16	31/32	1.46
	mm		38.1	11.906		16.332/16.484	52.784	107.156	11.112	24.606	.662
AG2427-1AF	Inch	2060	1-1/2	15/32	8	.643/.649	2-5/64	4-7/32	7/16	31/32	1.46
	mm		38.1	11.906		16.332/16.484	52.784	107.156	11.112	24.606	.662
AG2438-1AF	Inch	Special	1-1/4	.460	11	.643/649	2-5/64	4-17/32	9/16	1-1/32	1.50
	mm		31.75	11.684		16.332/16.484	52.784	115.093	14.287	26.193	.680
AG2565-2AF	Inch	555	1.630	21/32	8	.643/.649	2-5/64	4-3/4	7/16	1-3/16	1.69
	mm		41.402	16.668		16.332/16.484	52.784	120.65	11.112	30.162	.776
AG2565-3AF	Inch	555	1.630	21/32	8	.643/.649	2-5/64	4-3/4	7/16	31/32	1.50
	mm		41.402	16.668		16.332/16.484	52.784	120.65	11.112	24.606	.680
AG2566-2AF	Inch	550	1.630	21/32	8	.643/.649	2-5/64	4-3/4	11/16	1-3/16	1.69
	mm		41.402	16.668		16.332/16.484	52.784	120.65	11.112	30.162	.776
AG2566-4AF	Inch	550	1.630	21/32	8	.630/.636	2-5/64	4-3/4	11/16	1-1/32	1.50
	mm		41.402	16.668		16.002/16.154	52.784	120.65	11.112	24.606	.680

Single Pitch Chain Idlers



PART NO.	UNIT	CHAIN NO	PITCH	ROLLER DIA	TEETH	A	B	C	D	E	F	WEIGHT (LBS / kg)
AG2318-S	Inch	40 or 41	1/2	.312 / .306	18	.643 / .649	1	3-1/16	15/64	45/64	.750	.42
	mm			7.924 / 7.772		16.322 / 16.484						25.4
AG2318-A	Inch	40 or 41	1/2	.312, .306	18	.516 / .522	1	3-1/16	15/64	45/64	.750	.45
	mm			7.924 / 7.772		13.106 / 13.258						25.4
AG2416	Inch	50	5/8	.400	17	.643 / .649	7/8	3-5/8	11/32	51/64	.927	.74
	mm			10.16		16.322 / 16.484						22.225
AG2416-9**	Inch	50	5/8	.400	17	.643 / .649	7/8	3-5/8	11/32	51/64	.927	.74
	mm			10.16		16.322 / 16.484						22.225
AG2416-A	Inch	50	5/8	.400	17	.516 / .522	7/8	3-5/8	11/32	51/64	.927	.77
	mm			10.16		13.106 / 13.258						22.225
AG2416-A6**	Inch	50	5/8	.400	17	.516 / .522	7/8	3-5/8	11/32	51/64	1.125	.77
	mm			10.16		13.106 / 13.258						22.225
AG2416-AP	Inch	50	5/8	.400	17	.516 / .522	7/8	3-5/8	11/32	51/64	.927	.77
	mm			10.16		13.106 / 13.258						22.225
AG2436*	Inch	50	5/8	.400	17	.643 / .649	7/8	3-5/8	11/32	27/32	.927	.98
	mm			10.16		16.322 / 16.484						22.225
AG2436-A*	Inch	50	5/8	.400	17	.516 / .522	7/8	3-5/8	11/32	27/32	.927	1.01
	mm			10.16		13.106 / 13.258						22.225
AG2417	Inch	60	3/4	15/32	15	.643 / .649	7/8	3-29/32	7/16	53/64	.927	.80
	mm			11.906		16.322 / 16.484						22.225
AG2417-A	Inch	60	3/4	15/32	15	.516 / .522	7/8	3-5/8	11/32	53/64	.927	.83
	mm			11.906		13.106 / 13.258						22.225
AG2437*	Inch	60	3/4	15/32	15	.643 / .649	7/8	3-5/8	11/32	27/32	.927	1.08
	mm			11.906		16.322 / 16.484						22.225
AG2437-9**	Inch	60	3/4	15/32	15	.643 / .649	7/8	3-5/8	11/32	27/32	.927	1.08
	mm			11.906		16.322 / 16.484						22.225
AG2437-A*	Inch	60	3/4	15/32	15	.516 / .522	7/8	3-5/8	11/32	27/32	.927	1.11
	mm			11.906		13.106 / 13.258						22.225
AG2437-A9**	Inch	60	3/4	15/32	15	.516 / .522	7/8	3-5/8	11/32	27/32	.927	1.11
	mm			11.906		13.106 / 13.258						22.225

*Extra Heavy Gauge Steel

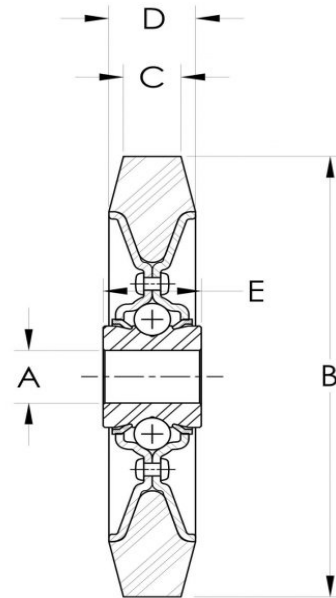
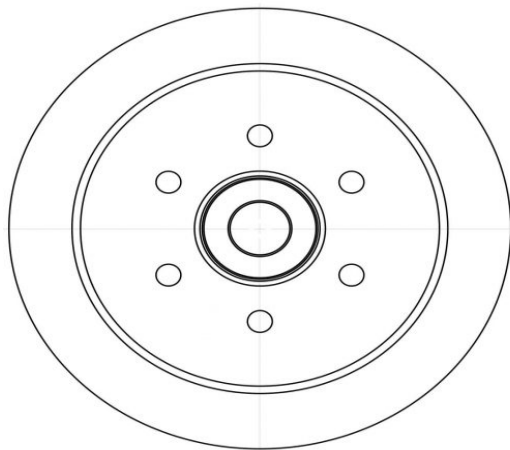
**Zinc Plated Yellow Hexavalent Chromium Finish

Tyre Idlers

Aetna rubber tire idlers share the same design advantages as standard Aetna idlers and are furnished with a SBR or EPDM rubber tires. They provide long life under demanding conditions and are installed with standard 1/2 or 5/8 bolts. Typically used in luggage handling carousels, belt conveyor systems and agricultural planters. They can be used as non-destructive belt tighteners to reduce wear on soft drive belts.

ADVANTAGES

- Over-size, factory packed lubricant chamber assures maximum life and operating efficiency without troublesome relubrication
- Bearing races are hardened to resist wear, outers and inners are accurately formed for smooth running
- Aetna's self-contouring, free-running, self-wiping seal provides positive contact under all conditions of misalignment
- Full ball complement for high durability

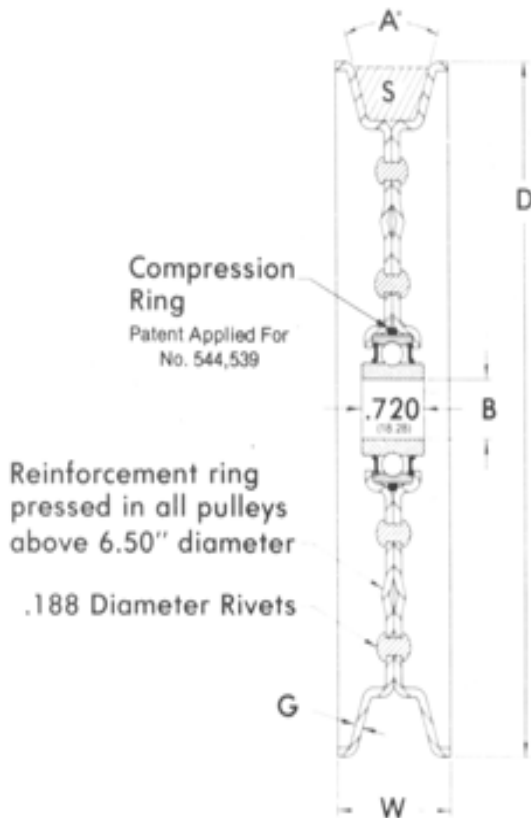


PART NO.	UNIT	BORE (A)	TYRE OD (B)	TYRE WIDTH (C)	OUTER WIDTH (D)	INNER WIDER (E)	WEIGHT (LBS / kg)
AG2341-ALS	Inch	.630/.636	4-1/4	19/32	7/8	13/16	.74
	mm	16.002/16.154	107.95	15.081	22.225	20.637	.335
AG2341-ALE	Inch	.630/.636	4-1/4	19/32	7/8	13/16	.74
	mm	16.002/16.154	107.95	15.081	22.225	20.637	.335
AG2342-A2T	Inch	.516/.522	4-1/4	19/32	7/8	13/16	.80
	mm	13.106/14.020	107.95	15.081	22.225	20.637	.362

Single Row Bearing Idler Pulleys

Don Dye pressed steel pulleys are designed to make a complete, economical, self contained unit for either flat or "V" side of belt. They are furnished with a single-row, radial-type, highest quality precision ground, pre-lubricated ball bearing (made of 52100 bearing steel) with contact-type seals to insure positive retention of lubricant and full protection against dirt, dust or foreign matter. These bearings contain a 60% fill of high temperature grease, no re-lubrication required. The ball bearing inner ring is extended on both sides to provide clearance for abutting parts and greater support on the shaft. A compression ring (USA Patent No. 4518372) is compressed between the center O.D. of bearing and center I.D. of pulley bearing pocket to assure a firm reliable fit of pulleys to bearing. This helps distribute loads from the pulley more evenly to the outer bearing race resulting in minimum distortion of bearing O.D. Our tests have proven this method of bearing installation to give longer and more reliable bearing life. With little or no alterations, these belt pulleys can be adapted to new designs or to existing machine.

V-Belt Idlers



APPLICATIONS FOR IDLER PULLEYS

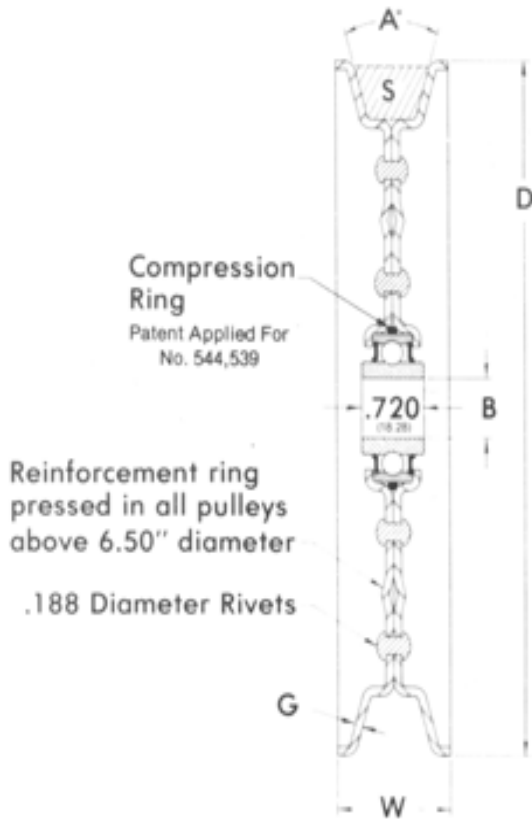
- Accurately bore sized for easy, quick mounting on standard 1/2" or 5/8" bolts (1/2" bore removable sleeve std. in all pulleys) 3/8" sleeve is available if requested.
- Pulleys are riveted for strength and durability- No spot welding is used.
- Feature smoothly rolled out edges which eliminate belt chafing and scuffing
- "Weep Holes" on the rivet circle allow water drainage when the pulley is mounted in a horizontal position.
- Zinc Plated

PART NO.	UNIT	INC. ANGLE (A)	BORE (B)	OUTSIDE DIAMETER (D)	PULLEY WIDTH (W)	BELT SIZE	ROWS OF RIVETS	NO. OF RIVETS	GA. MAT. (G)	WEIGHT (LBS / kg)
AVI-40	Inch	32	Fitted with 1/2" Removable Reduction Bush - 3/8" Bush Available	2.5	0.63	A	1	6	14	0.46
	mm			63.5	16.00					0.20
56RG-54	Inch	34		3.50	0.86	A	1	6	14	0.66
	mm			88.9	21.84					0.30
AVI-56	Inch	34		3.50	0.86	A	1	6	14	0.66
	mm			88.9	21.84					0.30
AVI-64	Inch	34		4.00	0.84	A	1	6	14	0.77
	mm			101.60	21.33					0.35
BVI-60	Inch	34		3.75	0.96	B	1	6	14	0.69
	mm			95.25	24.38					0.31
BVI-70	Inch	32		4.37	1.00	B	1	6	14	0.88
	mm			110.99	25.40					0.40
ABVI-80*	Inch	34		5.00	1.00	A,B	1	6	14	1.12
	mm			127.00	25.40					0.51

*Also available trimmed one side in plain steel (Part No. TABVI-80PLAIN)

Single Row Bearing Idler Pulleys

V-Belt Idlers Cont.

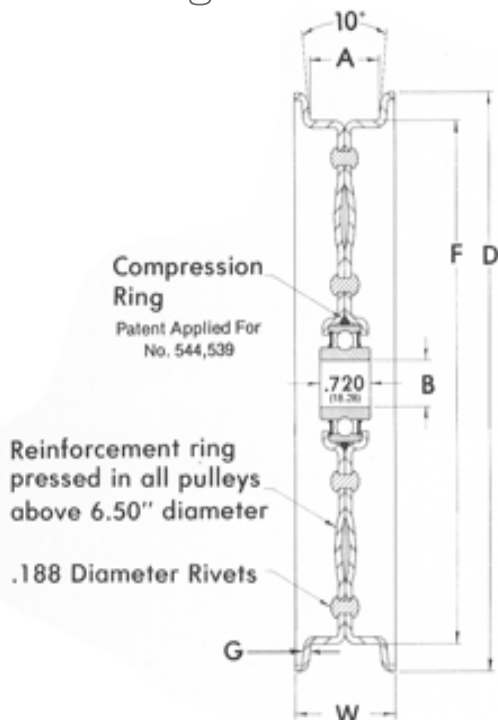


PART NO.	UNIT	INC. ANGLE (A)	BORE (B)	OUTSIDE DIAMETER (D)	PULLEY WIDTH (W)	BELT SIZE	ROWS OF RIVETS	NO. OF RIVETS	GA. MAT. (G)	WEIGHT (LBS / kg)
BVI-80	Inch	32	Fitted with 1/2" Removable Reduction Bush - 3/8" Bush Available	5.00	1.00	B	2	18	14	1.12
	mm			127.00	25.40					0.51
BCVI-81	Inch	32		5.06	1.31	B,C	1	6	14	1.12
	mm			128.59	33.27					0.51
CVI-84	Inch	32		5.25	1.31	C	2	18	14	1.23
	mm			133.35	33.27					0.56
BVI-100	Inch	32		6.25	1.00	B	2	18	14	1.62
	mm			158.75	25.40					0.73
CVI-100	Inch	32		6.25	1.31	C	2	18	14	1.68
	mm			158.75	33.72					0.76
BVI-108	Inch	32		6.75	1.00	B	2	18	14	1.82
	mm			171.45	25.40					0.83
BCVI-117	Inch	32		7.31	1.31	B,C	2	18	14	2.14
	mm			185.67	33.27					0.97
CVI-117	Inch	32		7.31	1.31	C	2	18	14	2.11
	mm			185.67	33.27					0.91
5VI-128	Inch	38		8.047	1.06	5V	2	18	14	2.25
	mm			204.39	26.97					1.02
5VI-137	Inch	38		8.56	1.12	5V	2	18	14	2.56
	mm			217.42	28.44					1.16
CVI-144	Inch	32	9.00	1.31	C	2	18	14	3.05	
	mm		228.60	33.27					1.38	
5VI-152	Inch	38	9.50	1.12	5V	2	18	14	3.26	
	mm		241.30	28.44					1.48	

Single Row Bearing Idler Pulleys

Don Dye pressed steel pulleys are designed to make a complete, economical, self contained unit for either flat or "V" side of belt. They are furnished with a single-row, radial-type, highest quality precision ground, pre-lubricated ball bearing (made of 52100 bearing steel) with contact-type seals to insure positive retention of lubricant and full protection against dirt, dust or foreign matter. These bearings contain a 60% fill of high temperature grease, no re-lubrication required. The ball bearing inner ring is extended on both sides to provide clearance for abutting parts and greater support on the shaft. A compression ring (USA Patent No. 4518372) is compressed between the center O.D. of bearing and center I.D. of pulley bearing pocket to assure a firm reliable fit of pulleys to bearing. This helps distribute loads from the pulley more evenly to the outer bearing race resulting in minimum distortion of bearing O.D. Our tests have proven this method of bearing installation to give longer and more reliable bearing life. With little or no alterations, these belt pulleys can be adapted to new designs or to existing machine.

Flat Flanged Idlers



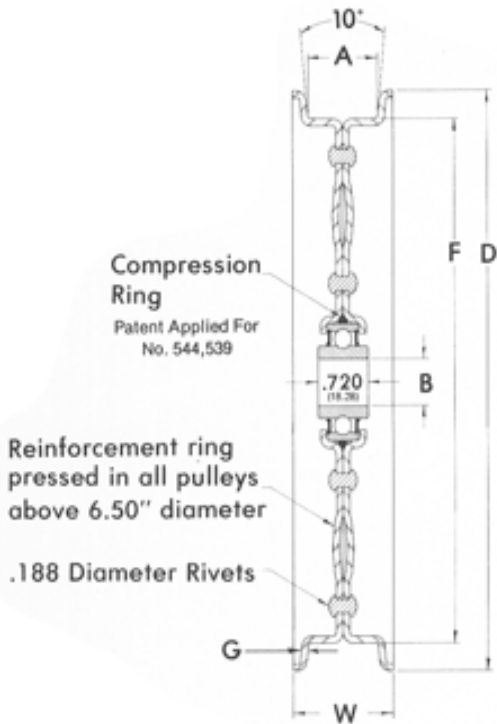
APPLICATIONS FOR IDLER PULLEYS

- Accurately bore sized for easy, quick mounting on standard 1/2" or 5/8" bolts (1/2" bore removable sleeve std. in all pulleys) 3/8" sleeve is available if requested.
- Pulleys are riveted for strength and durability- No spot welding is used.
- Feature smoothly rolled out edges which eliminate belt chafing and scuffing
- "Weep Holes" on the rivet circle allow water drainage when the pulley is mounted in a horizontal position.
- Zinc Plated

PART NO.	UNIT	FACE WIDTH (A)	BORE (B)	OUTSIDE DIAMETER (D)	PULLEY WIDTH (W)	FACE DIAMETER (F)	ROWS OF RIVETS	NO. OF RIVETS	GA. MAT. (G)	WEIGHT (LBS / kg)
26FFI-52*	Inch	1.61	Fitted with 1/2" Removable Reduction Bush - 3/8" Bush Available	3.25	2.06	3.25	1	6	14	0.75
	mm	40.89		82.55	52.32	82.55				0.34
ABFI-54	Inch	.74		3.35	1.12	2.75	1	6	14	0.75
	mm	18.80		85.10	28.45	69.85				0.34
ABFI-64	Inch	0.75		4.00	1.12	3.38	1	6	14	0.83
	mm	19.05		101.60	28.44	85.85				0.38
26FI-64	Inch	1.62		4.00	2.06	3.38	1	6	14	1.00
	mm	41.15		101.6	52.32	85.85				0.45
ABFI-76	Inch	0.75		4.75	1.12	4.00	2	18	14	1.09
	mm	19.05		120.65	28.44	101.60				0.49
BCFI-76	Inch	1.00		4.75	1.43	4.00	2	18	14	1.14
	mm	25.40		120.65	36.51	01.60				0.52
GAIISFI-88	Inch	0.62		5.5	0.85	5	2	18	14	
	mm	15.87		139.7	21.6	127				
BCFI-92	Inch	1.00		5.75	1.43	5.00	2	18	14	1.55
	mm	25.40		146.05	36.51	127.00				0.7
FPB2A-92	Inch	1.31	5.75	1.75	5.00	2	18	14	1.7	
	mm	33.27	146.05	44.45	127.00				0.77	

Single Row Bearing Idler Pulleys

Flat Flanged Idlers Cont.



PART NO.	UNIT	FACE WIDTH (A)	BORE (B)	OUTSIDE DIAMETER (D)	PULLEY WIDTH (W)	FACE DIAMETER (F)	ROWS OF RIVETS	NO. OF RIVETS	GA. MAT. (G)	WEIGHT (LBS / kg)
26FI-92	Inch	1.62	Fitted with 1/2" Removable Reduction Bush - 3/8" Bush Available	5.75	2.06	5.00	2	18	14	1.75
	mm	41.14		146.05	52.39	127.00				0.79
32FI-92	Inch	2.00		5.75	2.43	5.00	2	18	14	1.85
	mm	50.80		146.05	61.91	127.00				0.84
ABFI-100	Inch	0.75		6.25	1.18	5.50	2	18	14	1.68
	mm	19.05		158.75	30.16	139.70				0.76
BCFI-100	Inch	1.00		6.25	1.43	5.50	2	18	14	1.75
	mm	25.40		158.75	36.51	139.70				0.79
24FFI-104*	Inch	1.50		6.50	1.50	6.50	2	18	14	2.125
	mm	38.10		165.10	38.1	165.1				0.963
ABFI-108	Inch	0.75		6.75	1.18	6.00	2	18	14	1.91
	mm	19.05		171.45	30.16	152.40				0.87
BCFI-108	Inch	1.00		6.75	1.43	6.00	2	18	14	1.97
	mm	25.40		171.45	36.51	152.40				0.89
26FI-108	Inch	1.62		6.75	2.06	6.00	2	18	14	2.19
	mm	41.28		171.45	52.39	152.40				0.99
BCFI-124	Inch	1.00		7.75	1.43	7.00	2	18	14	2.46
	mm	25.40		196.85	36.51	177.80				1.12
32FFI-128*	Inch	2.00		8.00	2.00	8.00	2	18	14	3.25
	mm	50.80		203.2	50.80	203.2				1.47
BCFI-140	Inch	1.00	8.75	1.43	8.00	2	18	14	3.01	
	mm	25.40	222.25	36.51	203.20				1.37	
DFI-144	Inch	1.50	9	1.93	8.00	2	18	14	3.36	
	mm	38.10	228.6	49.21	203.20				1.52	
32FI-144	Inch	2.00	9	2.43	8.00	2	18	14	3.56	
	mm	50.80	228.6	61.91	203.20				1.61	
DFI-176	Inch	1.50	11	1.93	10.00	2	18	14	4.71	
	mm	38.10	279.4	49.31	254				4.71	

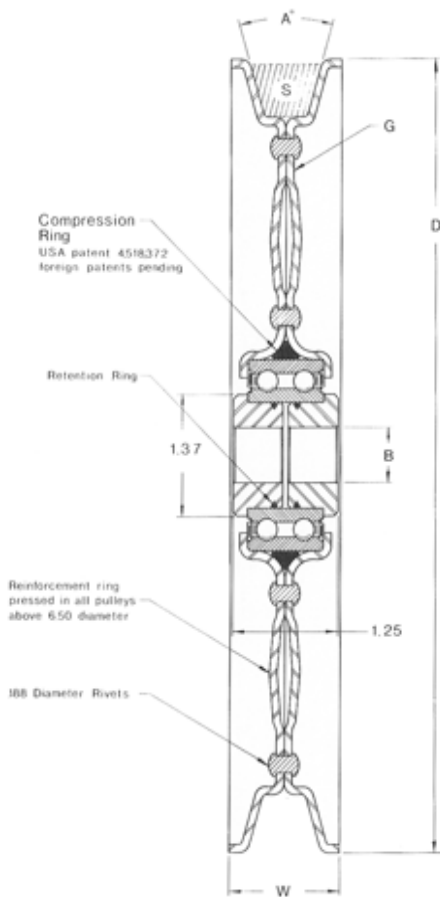
*FFI Indicates Flat Face Idler

Double Row Bearing Idler Pulleys

This Don Dye line of heavy duty double row ball bearing flat, flanged, and V groove idlers was developed to handle heavier loads that exceed the capacity of single row ball bearing idlers. The double row idlers are more stable when side loads or off center loads occur.

They are available with 3/8", 1/2", 5/8" and 3/4" bolt mounting. These riveted idlers are constructed from 13 gauge material. The high quality precision bearings made of 52100 bearing steel are pre-lubricated, have contact type seals for retention of high temperature lubricant to ensure protection against dust, dirt or other foreign matter. No re-lubrication is required. A compression ring is compressed between center of O.D. of bearing and center I.D. of pulley bearing pocket to assure a firm reliable fit of pulley more evenly to the outer bearing race resulting in minimum distortion of bearing O.D, (USA patent 4518372 foreign patents pending). Our tests have proven this method of bearing installation to give longer and more reliable bearing life.

V-Belt Idlers



APPLICATIONS FOR IDLER PULLEYS

- Accurately bore sized for easy, quick mounting on standard 1/2" or 5/8" bolts (1/2" bore removable sleeve std. in all pulleys) 3/8" sleeve is available if requested.
- Pulleys are riveted for strength and durability- No spot welding is used.
- Feature smoothly rolled out edges which eliminate belt chafing and scuffing
- "Weep Holes" on the rivet circle allow water drainage when the pulley is mounted in a horizontal position.
- Zinc Plated

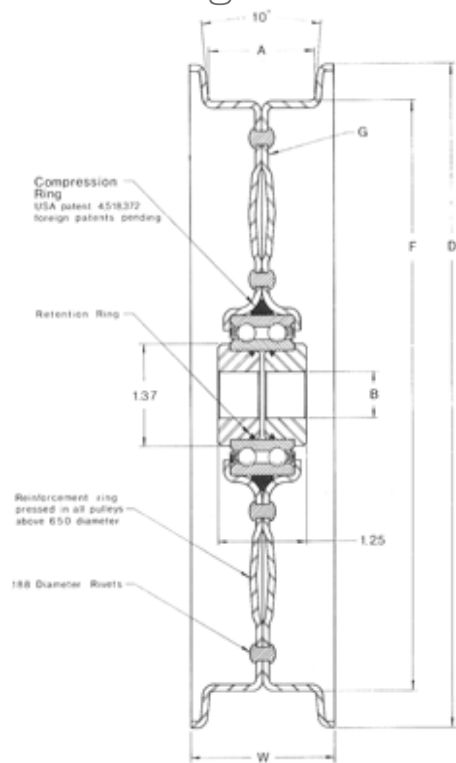
PART NO.	UNIT	INC. ANGLE (A)	BORE (B)	OUTSIDE DIAMETER (D)	PULLEY WIDTH (W)	BELT SIZE	ROWS OF RIVETS	NO. OF RIVETS	GA. MAT. (G)	WEIGHT (LBS / kg)
2CVI-84	Inch	32°	To Suit Reduction Bush - 3/8", 1/2", 5/8, 3/4"	5.25	1.37	C	1	9	13.00	1.88
	mm			133.35	34.80					0.85
2CVI-117	Inch	32°		7.31	1.37	C	2	18	13.00	3
	mm			185.67	34.80					1.36
2CVI-144	Inch	32°		9	1.37	C	2	18	13.00	4.2
	mm			228.6	34.80					1.91

Double Row Bearing Idler Pulleys

This Don Dye line of heavy duty double row ball bearing flat, flanged, and V groove idlers was developed to handle heavier loads that exceed the capacity of single row ball bearing idlers. The double row idlers are more stable when side loads or off center loads occur.

They are available with 3/8", 1/2", 5/8" and 3/4" bolt mounting. These riveted idlers are constructed from 13 gauge material. The high quality precision bearings made of 52100 bearing steel are pre-lubricated, have contact type seals for retention of high temperature lubricant to ensure protection against dust, dirt or other foreign matter. No re-lubrication is required. A compression ring is compressed between center of O.D. of bearing and center I.D. of pulley bearing pocket to assure a firm reliable fit of pulley more evenly to the outer bearing race resulting in minimum distortion of bearing O.D, (USA patent 4518372 foreign patents pending). Our tests have proven this method of bearing installation to give longer and more reliable bearing life.

Flat Flanged Idlers



APPLICATIONS FOR IDLER PULLEYS

- Accurately bore sized for easy, quick mounting on standard 1/2" or 5/8" bolts (1/2" bore removable sleeve std. in all pulleys) 3/8" sleeve is available if requested.
- Pulleys are riveted for strength and durability- No spot welding is used.
- Feature smoothly rolled out edges which eliminate belt chafing and scuffing
- "Weep Holes" on the rivet circle allow water drainage when the pulley is mounted in a horizontal position.
- Zinc Plated

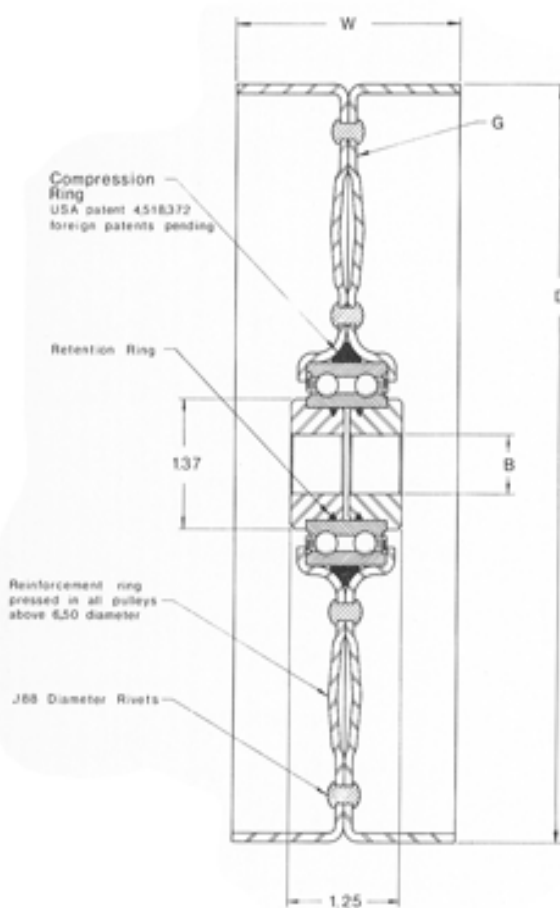
PART NO.	UNIT	FACE WIDTH (A)	BORE (B)	OUTSIDE DIAMETER (D)	PULLEY WIDTH (W)	FACE DIAMETER (F)	ROWS OF RIVETS	NO. OF RIVETS	GA. MAT. (G)	WEIGHT (LBS / kg)
2S43FI-116	Inch	2.75	To Suit Reduction Bush - 3/8", 1/2", 5/8, 3/4"	7.5	3	6.5	2	18	13.00	3.30
	mm	69.85		190.5	76.2	165.1				1.5
208032092	Inch	2.00		5.75	2.48	5	2	18	13.00	2.62
	mm	50.80		146.05	63.10	127				1.19
209626108	Inch	1.62		6.75	2.06	6	2	18	13.00	3.04
	mm	41.14		171.45	52.40	152.4				1.4
209632108	Inch	2.00		6.75	2.48	6	2	18	13.00	3.27
	mm	50.80		171.45	63.10	152.4				1.48
212824144	Inch	1.50		9.00	2.03	8	2	18	13.00	4.55
	mm	38.10		228.60	51.56	230.2				2.07
212832144	Inch	2.00		9.00	2.57	8	2	18	13.00	4.89
	mm	50.80		228.60	65.27	203.2				2.22
212842160	Inch	2.62		10.00	3.31	8	2	18	13.00	6.58
	mm	66.65		254.00	84.07	203.2				2.99
212852160	Inch	3.25		10.00	3.87	8	2	18	13.00	6.81
	mm	82.55		254.00	98.30	203.02				3.09

Double Row Bearing Idler Pulleys

This Don Dye line of heavy duty double row ball bearing flat, flanged, and V groove idlers was developed to handle heavier loads that exceed the capacity of single row ball bearing idlers. The double row idlers are more stable when side loads or off center loads occur.

They are available with 3/8", 1/2", 5/8" and 3/4" bolt mounting. These riveted idlers are constructed from 13 gauge material. The high quality precision bearings made of 52100 bearing steel are pre-lubricated, have contact type seals for retention of high temperature lubricant to ensure protection against dust, dirt or other foreign matter. No re-lubrication is required. A compression ring is compressed between center of O.D. of bearing and center I.D. of pulley bearing pocket to assure a firm reliable fit of pulley more evenly to the outer bearing race resulting in minimum distortion of bearing O.D, (USA patent 4518372 foreign patents pending). Our tests have proven this method of bearing installation to give longer and more reliable bearing life.

Flat Faced Idlers



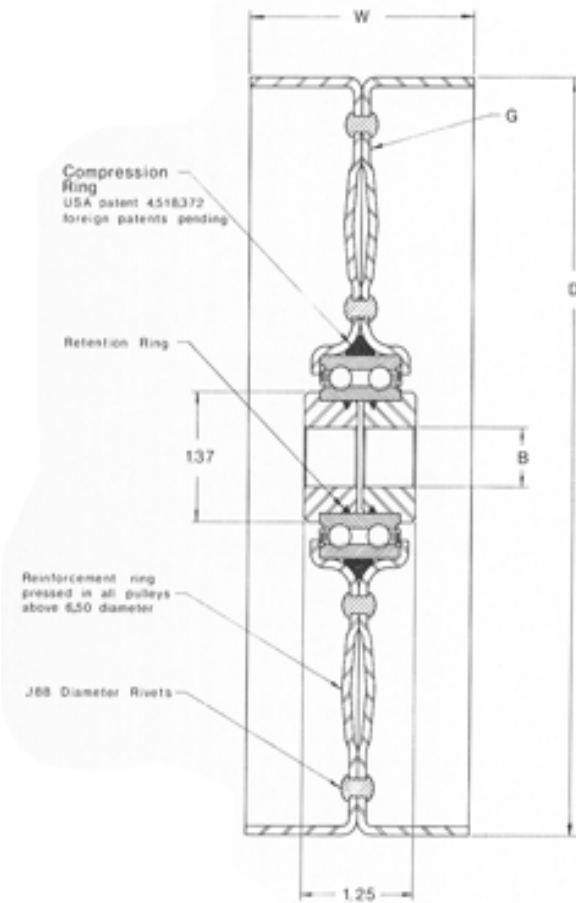
APPLICATIONS FOR IDLER PULLEYS

- Accurately bore sized for easy, quick mounting on standard 1/2" or 5/8" bolts (1/2" bore removable sleeve std. in all pulleys) 3/8" sleeve is available if requested.
- Pulleys are riveted for strength and durability- No spot welding is used.
- Feature smoothly rolled out edges which eliminate belt chafing and scuffing
- "Weep Holes" on the rivet circle allow water drainage when the pulley is mounted in a horizontal position.
- Zinc Plated

PART NO.	UNIT	FACE WIDTH (A)	BORE (B)	OUTSIDE DIAMETER (D)	PULLEY WIDTH (W)	FACE DIAMETER (F)	ROWS OF RIVETS	NO. OF RIVETS	GA. MAT. (G)	WEIGHT (LBS / kg)
208032080	Inch	2.00	To Suit Reduction Bush - 3/8", 1/2", 5/8, 3/4"	5.00	2.00	5.00	2	18.00	13.00	2.32
	mm	50.80		127.00	50.80	127.00				1.05
208036080	Inch	2.25		5.00	2.25	5.00	2	18.00	13.00	2.41
	mm	57.15		127.00	57.15	127.00				1.10
208040080	Inch	2.50		5.00	2.50	5.00	2	18.00	13.00	2.51
	mm	63.50		127.00	63.50	127.00				1.14
208048080	Inch	3.00		5.00	3.00	5.00	2	18.00	13.00	2.66
	mm	76.20		127.00	76.20	127.00				1.21

Double Row Bearing Idler Pulleys

Flat Face Idlers Cont.



PART NO.	UNIT	FACE WIDTH (A)	BORE (B)	OUTSIDE DIAMETER (D)	PULLEY WIDTH (W)	FACE DIAMETER (F)	ROWS OF RIVETS	NO. OF RIVETS	GA. MAT. (G)	WEIGHT (LBS / kg)
208052080	Inch	3.25	To Suit Reduction Bush - 3/8", 1/2", 5/8, 3/4"	5.00	3.25	5.00	2	18.00	13.00	2.77
	mm	82.55		127.00	82.55	127.00				1.26
210432104	Inch	2.00		6.50	2.00	6.50	2	18.00	13.00	3.19
	mm	50.80		165.10	50.80	165.10				1.45
210436104	Inch	2.25		6.50	2.25	6.50	2	18.00	13.00	3.32
	mm	57.15		165.10	57.15	165.10				1.51
210440104	Inch	2.50		6.50	2.50	6.50	2	18.00	13.00	3.42
	mm	63.50		165.10	63.50	165.10				1.55
210448104	Inch	3.00		6.50	3.00	6.50	2	18.00	13.00	3.68
	mm	76.20		165.10	76.20	165.10				1.67
210452104	Inch	3.25		6.50	3.25	6.50	2	18.00	13.00	3.82
	mm	82.55		165.10	82.55	165.10				1.74
210456104	Inch	3.50		6.50	3.50	6.50	2	18.00	13.00	3.93
	mm	88.90		165.10	88.90	165.10				1.78
212832128	Inch	2.00		8.00	2.00	8.00	2	18.00	13.00	4.28
	mm	50.80		203.20	50.80	203.20				1.94
212840128	Inch	2.50		8.00	2.50	0.00	2	18.00	13.00	4.55
	mm	63.50		203.20	63.50	203.20				2.07
212848128	Inch	3.00		8.00	3.00	8.00	2	18.00	13.00	4.89
	mm	76.20		203.20	76.20	203.20				2.22
212852128	Inch	3.25	8.00	3.25	8.00	2	18.00	13.00	5.03	
	mm	82.55	203.20	82.55	203.20				2.28	



PART NO.	TYPE	DESCRIPTION	PAGE	PART NO.	TYPE	DESCRIPTION	PAGE
AG2318-A	Sprocket	1/2" Pitch 18 Tooth	14	AG2436	Sprocket	5/8" Pitch 17 Tooth	14
AG2318-S	Sprocket	1/2" Pitch 19 Tooth	14	AG2436-A	Sprocket	5/8" Pitch 17 Tooth	14
AG2321	Pulley	A Section	6	AG2437	Sprocket	3/4" Pitch 15 Tooth	14
AG2321-A	Pulley	A Section	6	AG2437-9	Sprocket	3/4" Pitch 15 Tooth	14
AG2331	Pulley	Round Belt	7	AG2437-A	Sprocket	3/4" Pitch 15 Tooth	14
AG2331-A	Pulley	Round Belt	7	AG2437-A9	Sprocket	3/4" Pitch 15 Tooth	14
AG2341-ALE	Rubber Tyre		15	AG2438-1AF	Sprocket	1-1/4" Pitch 11 Tooth	13
AG2341-ALS	Rubber Tyre		15	AG2452	Pulley	Flat Flanged	10
AG2342-A2T	Rubber Tyre		15	AG2452-A	Pulley	Flat Flanged	10
AG2352	Pulley	Flat Flanged	10	AG2565-2AF	Sprocket	41.4mm Pitch 8 Tooth	13
AG2352-A	Pulley	Flat Flanged	10	AG2565-3AF	Sprocket	41.4mm Pitch 8 Tooth	13
AG2354-AS	Pulley	Flat Flanged	10	AG2566-2AF	Sprocket	41.4mm Pitch 8 Tooth	13
AG2354-FK	Pulley	Flat Flanged	10	AG2566-4AF	Sprocket	41.4mm Pitch 8 Tooth	13
AG2362-A	Pulley	Flat Flanged	10	AG2613	Pulley	Flat Flanged	10
AG2362-S	Pulley	Flat Flanged	10	AG2613-13	Pulley	Flat Flanged	10
AG2365-1AM	Pulley	Flat Single Flange	9	AG2613-A	Pulley	Flat Flanged	10
AG2365-A	Pulley	Flat Single Flange	9	AG2621	Pulley	A/B/C Section	6
AG2366-AS	Pulley	Flat Flanged	10	AG2621-A	Pulley	A/B/C Section	6
AG2367-A	Pulley	Flat Non Flanged	8	AG2721	Pulley	B/C Section	6
AG2413	Pulley	Flat Flanged	10	AG2814	Pulley	Flat Flanged	10
AG2413-A	Pulley	Flat Flanged	10	B13516-A	Pulley	B Section	2
AG2416	Sprocket	5/8" Pitch 17 Tooth	14	B13516-B	Pulley	B Section	2
AG2416-9	Sprocket	5/8" Pitch 17 Tooth	14	C15919-B9	Pulley	C Section	2
AG2416-A	Sprocket	5/8" Pitch 17 Tooth	14	F14026-B	Pulley	Flat Flanged	3
AG2416-A6	Sprocket	5/8" Pitch 17 Tooth	14	F14416-A	Pulley	Flat Flanged	3
AG2416-AP	Sprocket	5/8" Pitch 17 Tooth	14	F14416-B	Pulley	Flat Flanged	3
AG2416-B	Sprocket	1-1/4" Pitch 9 Tooth	12	F16416-B	Pulley	Flat Flanged	3
AG2417	Sprocket	3/4" Pitch x 15 Tooth	14	F16424-B6	Pulley	Flat Flanged	3
AG2417-A	Sprocket	3/4" Pitch x 15 Tooth	14	F26448-B6	Pulley	Flat Flanged	5
AG2421	Pulley	A Section	6	F26452-B9	Pulley	Flat Flanged	5
AG2421-A	Pulley	A Section	6	S24032-A	Pulley	Flat Non Flanged	4
AG2422	Sprocket	41.91mm Pitch 7 Tooth	11	S24032-B	Pulley	Flat Non Flanged	4
AG2422-1AF	Sprocket	41.4mm Pitch 7 Tooth	11	S25252-A	Pulley	Flat Non Flanged	4
AG2427	Sprocket	1-1/2" Pitch 8 Tooth	13	S25252-C	Pulley	Flat Non Flanged	4
AG2427-1AF	Sprocket	1-1/2" Pitch 8 Tooth	13	S26452-B6	Pulley	Flat Non Flanged	4
AG2427-AF	Sprocket	1-1/2" Pitch 8 Tooth	13	S28052-B	Pulley	Flat Non Flanged	4
AG2427-AM	Sprocket	1-1/2" Pitch 8 Tooth	13				



Part Number Index - Don Dye

PART NO.	TYPE	DESCRIPTION	PAGE	PART NO.	TYPE	DESCRIPTION	PAGE
208032080	Pulley	Flat Non Flanged	22	ABFI-100	Pulley	Flat Flanged	19
208032092	Pulley	Flat Flanged	21	ABFI-108	Pulley	Flat Flanged	19
208036080	Pulley	Flat Non Flanged	22	ABFI-54	Pulley	Flat Flanged	18
208040080	Pulley	Flat Non Flanged	22	ABFI-64	Pulley	Flat Flanged	18
208048080	Pulley	Flat Non Flanged	22	ABFI-76	Pulley	A/B Section	18
208052080	Pulley	Flat Non Flanged	23	ABVI-80	Pulley	A/B Section	16
209626108	Pulley	Flat Flanged	21	AVI-40	Pulley	A Section	16
209632108	Pulley	Flat Flanged	21	AVI-56	Pulley	A Section	16
210432104	Pulley	Flat Non Flanged	23	AVI-64	Pulley	A Section	16
210436104	Pulley	Flat Non Flanged	23	BCFI-100	Pulley	Flat Flanged	19
210440104	Pulley	Flat Non Flanged	23	BCFI-108	Pulley	Flat Flanged	19
210448104	Pulley	Flat Non Flanged	23	BCFI-124	Pulley	Flat Flanged	19
210452104	Pulley	Flat Non Flanged	23	BCFI-140	Pulley	Flat Flanged	19
210456104	Pulley	Flat Non Flanged	23	BCFI-76	Pulley	Flat Flanged	18
212824144	Pulley	Flat Flanged	21	BCFI-92	Pulley	Flat Flanged	18
212832128	Pulley	Flat Non Flanged	23	BCVI-117	Pulley	B/C Section	17
212832144	Pulley	Flat Flanged	21	BCVI-81	Pulley	B/C Section	17
212840128	Pulley	Flat Non Flanged	23	BVI-100	Pulley	B Section	17
212842160	Pulley	Flat Flanged	21	BVI-108	Pulley	B Section	17
212848128	Pulley	Flat Non Flanged	23	BVI-60	Pulley	B Section	16
212852128	Pulley	Flat Non Flanged	23	BVI-70	Pulley	B Section	16
212852160	Pulley	Flat Flanged	21	BVI-80	Pulley	B Section	17
24FFI-104	Pulley	Flat Non Flanged	19	CVI-100	Pulley	C Section	17
26FFI-52	Pulley	Flat Non Flanged	18	CVI-117	Pulley	C Section	17
26FI-108	Pulley	Flat Flanged	19	CVI-144	Pulley	C Section	17
26FI-64	Pulley	Flat Flanged	18	CVI-84	Pulley	C Section	17
26FI-92	Pulley	Flat Flanged	19	DFI-144	Pulley	Flat Flanged	19
2CVI-117	Pulley	C Section	20	DFI-176	Pulley	Flat Flanged	19
2CVI-144	Pulley	C Section	20	FPB2A-92	Pulley	Flat Flanged	18
2CVI-84	Pulley	C Section	20	GAISFI-88	Pulley	Flat Flanged	18
2S43FI-116	Pulley	Flat Flanged	21	TABVI-80Plain	Pulley	A/B Section	16
32FFI-128	Pulley	Flat Non Flanged	19	3/8-006	Pulley	Reduction Insert	-
32FI-144	Pulley	Flat Flanged	19	1/2-008	Pulley	Reduction Insert	-
32FI-92	Pulley	Flat Flanged	19	3/8-106	Pulley	Reduction Insert	-
56RG-54	Pulley	A Section	16	1/2-108	Pulley	Reduction Insert	-
5VI-128	Pulley	5V Section	17	5/8-110	Pulley	Reduction Insert	-
5VI-137	Pulley	5V Section	17	3/4-112	Pulley	Reduction Insert	-
5VI-152	Pulley	5V Section	17				-

IDLER PULLEYS AND SPROCKETS

Catalogue



HEAD OFFICE
170-176 Williams Road
Dandenong 3175
Victoria Australia
Telephone +61 3 9791 2444
Facsimile + 61 3 9791 3344
Email sales@finerpt.com

NSW OFFICE
10 Jumal Place
Smithfield 2164
New South Wales Australia
Telephone +61 2 9756 3635
Facsimile + 61 2 9757 3850
Email nswsales@finerpt.com

QLD OFFICE
101 Delta Street
Geebung 4034
Queensland Australia
Telephone +61 7 3865 5002
Facsimile + 61 7 3865 5202
Email qldsales@finerpt.com

Authorised Dealer