



BETTER SOFTWARE FOR LASER CUTTERS



~THE FUTURE OF LASER ENGRAVING~

Engraver's
choice



"YOUR ENGRAVING & LASER EXPERTS"



LIGHTBURN LASER COURSE

C02 Series





Introduction

Joseph L. Brága

“Joe will instruct this videos course” He is an expert with Laser products; Omtech, BOSS Laser, Xenotech, Laguna Tools + LightBurn & EngraveLab. “Joe’s background is in Service Repair” + R&D of Lasers (Fiber & CO2), Engravers & Routers, and he has a teaching credential in Vo-Tech Education. He is an authorized EngraveLab & CorelDRAW Training Partner & Beta Tester & he has 30+ years experience working with Engraver’s and Lasers. Joe has owned signage & engraving operations, and written for many of the top magazines in the industry.

TRAINING

This class is designed to teach you how to use the software and apply it to running jobs on your Lasers, Sand-Carvers, CNC Engravers, as well as general graphics. This class only gives you information that relates directly to Lasers, Routers Mills, Engravers and/or general graphics.

Copyright © 2020

All rights reserved. No part of this document may be transferred, reproduced or utilized in any form or by any means, electronic or mechanical, including photocopying, recording, or by any information storage and retrieval system, without written permission.



LightBurn Table Of Contents

~Pre-install Email with links to pre-install Videos (Youtube) & Preinstall Manual
Links on TOC-6~



Video	Page
PI Pre-Installation Procedures	
	<small>Sections</small>
1 List items to get Before Beginning Process.....	1
Welcome to LightBurn	1
Our Main Staff	2
List of items	3
Support.....	4
2 Pre-install Video I	2
Pre-Installation Sheet.....	1
Uncrate & Tie-Straps	2
Position Laser & Inspect.....	3
Safety & Check the Tube.....	4
3 Pre-install Video II.....	3
Mount Tube to Laser	1
Hook-up Hoses	2
Fill Chiller & A/C Connect.....	3
Utility Box & Power-up.....	4
4 Pre-install Video III.....	4
Test Motion System & Focus	1
Set Origin & Test Fire.....	2
Check Amp Meter	3
Jog Motion System.....	4
5 Pre-install Video IV.....	5
Test Z-Platform.....	1
Test Pendant	2
Z-Level	3
Check Cabinet Light.....	4
6 Pre-install Video V	6
Recheck A/C Power Hookup	1
ReCheck Laser & Tube.....	2
Check AutoFocus	3
Sign & Email Pre-stall Sheet.....	4

Video	Page
I Installation Procedures	
	<small>Sections</small>
7 Installation Video I.....	7
Recheck Pre-install	1
Chiller Check... ..	2
Air Pump Install	3
Exhaust install	4
8 Installation Video II.....	8
Install Internal Exhaust	1
Wiring & Plugs	2
Inspection of Tube	3
Inspection of Optics.....	4
9 Installation Video III.....	9
Jog Motion System.....	1
Inspection of Electronics Board Stack-	2
Check Beam alignment.....	3
Adjust Beam alignment -Phase 1.....	4
10 Installation Video IV	10
Adjust Beam alignment -Phase 2A.....	1
Adjust Beam alignment -Phase 2B.....	2
Adjust Beam alignment -Phase 3	3
Adjust Beam alignment -Phase 4	4
11 Installation Video V.....	11
Z- motion - Auto-Focus.....	1
Z- motion - Manual Focus	2
Check-Adjust Platform level to Nozzle.....	3
Burn Line with Pulse and Jog	4
12 Installation Video V.I.....	12
Check LCD/Pendant	1
Recheck Wiring.....	2
P.M. Check.....	3
Recheck All.....	4

LightBurn Table Of Contents



Video	Page
A Important Data	
	Sections
13 Theory of Lasers & Basics	13
Optics	1
Motion System	2
Electronics	3
Cabinet & Z-Axis	4
14 Dialing Lasers into Materials.....	14
Why We Dial Lasers in	1
Material Library.....	2
Test Runs.....	3
Material Properties.....	4
15 Making a Positioning Table.....	15
Top Rails.....	1
Side Holders.....	2
Test Run	3
Pendant & Offsets	4
16 Cleaning Optics	16
Cleaning Solution	1
Lens	2
Lens ASSEMBLY	3
Mirrors	4
17 Preventative Maintenance	17
Clean Optics	1
Clean Motion System.....	2
Cabinet & Z-Axis.....	3
Inspection and Controller.....	4
18 Troubleshooting 101.....	18
Eyes and Ears.....	1
Software.....	2
Systems Check	3
PC-2-PC Support	4

Video	Page
B Software Install to PC	
	Sections
19 Install Videos/LightBurn Packages.....	19
Install Videos Packages	1
Install LightBurn Packages	2
Set Defaults for LightBurn	3
Set Shortcuts	4
20 Load CorelDRAW & Defaults.....	20
Load CorelDRAW.....	1
Load CorelDRAW Macro	2
CorelDRAW Defaults.....	3
LightBurn/Corel Defaults.....	4
21 Load EngraveLab & Defaults.....	21
Load EngraveLab	1
Load EngraveLab Macro	2
EngraveLab Defaults.....	3
LightBurn/EngraveLab Defaults.....	4
22 LightBurn Overview.....	22
Main Function.....	1
Work Pallet /Shapes.....	2
Control Panel	3
Downloads	4
23 First Download.....	23
2X2 Test Box	1
Burn Square & Adjust	2
Make Vector Line Job.....	3
Make Raster-Fill Job	4
24 LightBurn Open Default Job.....	24
Run Vector-Line Job.....	1
Run Raster-Fill Job	2
Run Default Job	3
Review Download to O.F.F.	4

LightBurn Table Of Contents



Video	Page
C <i>LightBurn Intro I</i>	
	Sections
25 Import a DXF/BMP.....	25
Import a DXF & Download.....	1
Import a BMP& Download	2
O.F.F	3
Run DXF/BMP Jobs	4
26 Job from Corel to LightBurn/Corel	26
Create a Graphics.....	1
Color Properties	2
Use Corel Macro.....	3
Power -Speed Review.....	4
27 Job from EngraveLab to LightBurn//Engravelab.....	27
Create a Graphics.....	1
Color Properties	2
Use EngraveLab Macro.....	3
Power -Speed Review.....	4
28 Raster vs Vector Theory	28
Raster -Fill Parameters.....	1
Vector-Line Parameters.....	2
Layer Color Control.....	3
Bitmaps & Etch Outlines.....	4
29 Dialing in a Laser II.....	29
Fill to Cut Power Ratios.....	1
Trace Cut.....	2
Laser Footprints.....	3
Saving Jobs.....	4
30 Parameter Library	30
Parameter Library	1
.lbrn Library.....	2
Run PIC/Layered Jobs (QA 1/2).....	3
Review Theory.....	4

Video	Page
D <i>Training LightBurn II</i>	
	Sections
31 Default Job and Layers Control II.....	31
Layer 1- Position-Blue.....	1
Raster/BMP Layers	2
Etch Cut	3
Red Vector Through	4
32 Positioning & Alignment Icons	32
Positioning Icons	1
Alignment Icons	2
Selecting.....	3
Control Panel Features III.....	4
33 Stimulation & Estimating.....	33
OffsetShapes/ Grouping.....	1
Selected Graphics	2
Bitmap Control.....	3
Array/Order of Cut.....	4
34 Basic Windows Functions	34
Save-Export.....	1
Importing files.....	2
Zoom/View.....	3
Copy-Paste-Cut.....	4
35 PC/Laser Origin.....	35
PC Origin	1
Laser Origin.....	2
Raster Direction.....	3
Setting for - Ethernet.....	4
36 Start & UD5(Ufile)	36
Start-Virtual Pendant	1
Ud5 Download.....	2
Run UD5 File Home Job.....	3
Run 3D Job.....	4

LightBurn Table Of Contents



Video	Page
E Training LightBurn III	
	Sections
37 Working with Text.....	37
Adding Text.....	1
Fonts	2
Sizing	3
Replacing Text.....	4
38 P.M. Laser	38
Lens Carriage	1
Combiner Lens/Tube	2
Mirror 2 & 3.....	3
Chiller/Rails/Level	4
39 Graphics Modifications	39
Edit Lead In and Out.....	1
Shapes & Graphics Tools.....	2
Arrange.....	3
Rotation and Process.....	4
40 Nodes Control.....	40
Nodes.....	1
Perforation mode.....	2
Nesting.....	3
Workspace.....	4
41 Bitmap Rendering.....	41
BMP Images.....	1
Outline Vectors.....	2
Pictures.....	3
Image Library.....	4
42 Rotary Device Overview.....	42
Round Defaults	1
Chuck vs Roller	2
Engraving Techniques	3
Return to Platform.....	4

Video	Page
F Corel/EngraveLab Overview	
	Sections
43 CorelDraw Five Steps.....	43
S.T.A.R.R. Size of Plate.....	1
S.T.A.R.R. Text-Assign Fonts	2
S.T.A.R.R. Re-size - Re-position	3
Proof.....	4
44 CorelDraw Defaults.....	44
Pages Default.....	1
ShortCuts.....	2
Color Pallet.....	3
LightBurn Macro.....	4
45 LightBurn/Corel.....	45
Dialog Overview.....	1
Fill Power & Speed	2
Line Power & Speed.....	3
Front-line Features I.....	4
46 EngraveLab Five Steps.....	46
S.T.A.R.R. Size of Plate.....	1
S.T.A.R.R. Text-Assign Fonts	2
S.T.A.R.R. Re-size - Re-position	3
Proof.....	4
47 EngraveLab Defaults	47
Pages De fault.....	1
ShortCuts.....	2
Color Pallet.....	3
LightBurn Macro.....	4
48 LightBurn/ EngraveLab.....	48
Five Steps.....	1
Macro	2
Color Setting.....	3
Download.....	4

LightBurn Table Of Contents



Video	Page
G Review Highlights	
	Sections
49 Hardware Overview.....	49
Optics	1
Motion System.....	2
Electronics	3
Cabinet & Z-Axis	4
50 Graphics Software.....	50
CorelDraw.....	1
EngraveLab.....	2
Adobe.....	3
Others.....	4
51 Windows 101.....	51
Windows Explorer.....	1
Clean Disk.....	2
Ram.....	3
PC Cleaning.....	4
52 Boss Interfaces.....	52
EzCad.....	1
Other Macros.....	2
CypCut & Metal Cutting.....	3
Rdworks.....	4
53 Corel Review Of Basics.....	53
Review of the Basics	1
More Info.....	2
Tools	3
Tricks & Tips.....	4
54 LightBurn S.T.A.R.R.....	54
Create a Job	1
Color Settings.....	2
Power & Speed	3
Download (Send).....	4

Video	Page
H F.A.Q.s	
	Sections
55 Acrylics Processing.....	55
Control Panel.....	1
Table Positioning.....	2
Pendant.....	3
Test Run.....	4
56 Long Plate.....	56
X-Mount.....	1
Y-Mount	2
Registration Points.....	3
Power Clipping.....	4
57 Laser 2-Ply Plastic & More.....	57
Parameter Library.....	1
Origin/Air Flow	2
Variable Text.....	3
Laser-able Materials.....	4
58 LaserBond/Thermark	58
Where to Buy.....	1
Applications.....	2
Power& Speed.....	3
Clean-up.....	4
59 Materials Vendors.....	59
What Materials.....	1
What Suppliers	2
How to Store.....	3
What to Charge.....	4
60 Future Training.....	60
LightBurn Training.....	1
Corel Training.....	2
EngraveLab Training.....	3
Laser Applications.....	4

LightBurn Table Of Contents



Video	Page
P Projects for LightBurn	
	Sections
61 Project Basic Job.....	61
Basic Five Steps.....	1
Plate Size & Text.....	2
Fonts & Alignment.....	3
Corel to EngraveLab.....	4
62 Project Plastic Job.....	62
Layout – Quick Steps.....	1
Color Properties.....	2
Logos and Shapes.....	3
Power -Speed Review.....	4
63 Project Stone Job.....	63
Layout – Quick Steps.....	1
Photos.....	2
Positioning.....	3
Simulation Review.....	4
64 Project Acrylic Job.....	64
Layout – Quick Steps.....	1
Array.....	2
Logos and Shapes.....	3
Advanced Cut Controls.....	4
65 Project Wood Job.....	65
Layout – Quick Steps.....	1
B/W Bitmaps & Outlines.....	2
Vector Cutting.....	3
Air Assist Tricks.....	4
66 Project Control Panels.....	66
Shapes – Quick Steps.....	1
Position & Arrange.....	2
Color Controls.....	3
Review.....	4

Video	Page
X More Info for LightBurn (One 'X' Video)	
General Power & Speed Setting.....	67-69
Engraver's Choice Support.....	70
Corel KB Overlay.....	71
EngraveLab KB Overlay.....	72
LightBurn KB Overlay.....	73
Installation Sheet Sign Off.....	74
Registration Sheet Sign Off.....	75
SALES & SUPPORT INFO.....	76-79

See Additional BOSS Laser Manuals for more in-Depth Instructions

Pre-install Links

1. LightBurn Intro to Video Course
<https://www.youtube.com/watch?v=pPG95z8O86I>

2. LightBurn Unpack & Inspect
https://youtu.be/lwco20w_6hw

3. LightBurn Attach Hoses & Cables
<https://youtu.be/u00Lc0BD0GQ>

4. LightBurn Isolated Line and Surge Protector
<https://youtu.be/DgAJIPE43p4>

5. LightBurn Pre-Install Testing Laser
<https://youtu.be/nFYEX6Pqu1U>

6. LightBurn Pre-install Review & Recheck
<https://youtu.be/3uwe43of6UM>

Copy & Paste Links

LightBurn Table Of Contents



Video		Page
L	Optimization from LightBurn	
		Sections
80	Cut Optimization.....	80
	Cut Planner.....	1
	Order By	2
	Optimizations	3
	Fills	4
81	Flood Fill.....	81
	Raster Properties.....	1
	Layers Dialog	2
	Logos and Shapes.....	3
	Power -Speed	4
82	Welds.....	82
	Layout – Quick Steps	1
	Shapes	2
	Positioning.....	3
	Offsets	4
83	Boolean Unions.....	83
	Layout – Quick Steps	1
	Boolean Positioning	2
	Logos and Shapes.....	3
	Advanced Cut Controls.....	4
84	Text and Offsetting	84
	Layout – Quick Steps	1
	Controls.....	2
	Fonts.....	3
	Cutting Tricks.....	4
85	Variable Text.....	85
	Create Text	1
	Position & Layout	2
	TEXT CSV File	3
	Array.....	4

Video		Page
M	Logo Creation for LightBurn	
		Sections
86	Camera Setup.....	86
	Camera Controls.....	1
	Lens Calibration	2
	Alignment Calibration	3
	Testing Camera	4
87	Camera Operations	87
	Layout – OverView.....	1
	Controls.....	2
	Trace & Capture.....	3
	Align & Run.....	4
88	Usability	88
	Drag & Drop	1
	Advanced Preview	2
	Views.....	3
	Misc.....	4
89	Splines and Optimize Tools	89
	Spline Import	1
	Node Control	2
	Optimize.....	3
	Cut Controls.....	4
90	Print & Cut.....	90
	Layout & Overview.....	1
	Cross-Hair Marks.....	2
	Targets.....	3
	Output Alignment.....	4
91	Z-Control	91
	Z Movement	1
	Z Origin	2
	Color Controls	3
	Z Positions within a Job.....	4

LightBurn Table Of Contents



Video		Page
N	Metal Processing I	
		Sections
92	Metal Processing Intro/Pre-Install.....	92
	Welcome	1
	Uncrate and Straps	2
	Hose-up Hoses	3
	Set Origin & Test Fire	4
93	Metal Processing Installation	93
	Pendant	1
	Optics	2
	Z-Table & Cabinet.....	3
	Electronics	4
94	Send to Metal Processing.....	94
	PC & Hook-up.....	1
	Layout – Quick steps	2
	PC Origin.....	3
	Power & Speed	4
95	Metal Processing Cutting Metal	95
	Layout – Metal Steps	1
	61 Controller.....	2
	Test Run.....	3
	O2 Cutting	4
96	Metal Processing O.F.F. & Pendant.....	96
	Origin	1
	Focus	2
	File	3
	Pendant Controls.....	4
97	Metal Processing Rotary Device	97
	Round Defaults	1
	Chuck vs Roller	2
	Engraving Technics	3
	Return to Platform.....	4

Video		Page
O	Metal Processing II	
		Sections
98	Metal Processing Positioning Table.....	98
	Top Rails.....	1
	Side Holders.....	2
	Test Run.....	3
	Pendant & Offsets.....	4
99	Metal Processing Preventative Maintenance	99
	Clean Optics	1
	Clean Motion System.....	2
	Cabinet & Z-Axis.....	3
	Inspection and Controller	4
100	Dialing in Metals	100
	Why We Dial Lasers in	1
	Material Library.....	2
	Test Runs.....	3
	Material Properties.....	4
101	Laser-Brass JOB	101
	Shapes – Quick Steps	1
	Position & Arrange	2
	Color Controls	3
	Review.....	4
102	Deep Acrylic on HP.....	102
	Control Panel.....	1
	Table Positioning.....	2
	Pendant.....	3
	Test Run.....	4
103	Metal Processing Trouble-Shooting.....	103
	Eyes and Ears.....	1
	Software.....	2
	Systems Check	3
	PC-2-PC Support.....	4

LightBurn Table Of Contents



LightBurn Command Video A-List

	Sections
File: New Video-A.....	L
File: Open recent projects Video-A.....	L
File: Open Video-A.....	L
File: Import Video-A.....	L
File: Save Video-A.....	L
File: Export Videos-A.....	L
File: Exit Video-A.....	L
Tool-Bar: Select Video-A.....	L
Tool-Bar: Draw Lines Video-A.....	L
Tool-Bar: Rectangle Tool Video-A.....	L
Tool-Bar: Ellipse Tool Video-A.....	L
Tool-Bar: Regular Polygon Video-A.....	L
Tool-Bar: Edit Nodes Video-A.....	L
Tool-Bar: Edit Text Video-A.....	L
Tool-Bar: Set Laser Position Video-A.....	L
Tool-Bar: Offset Shapes Video-A.....	L
Tool-Bar: Weld Shapes Video-A.....	L
Tool-Bar: Boolean Union Video-A.....	L
Tool-Bar: Boolean Subtract Video-A.....	L
Tool-Bar: Boolean Intersection Video-A.....	L
Tool-Bar: Array Grid Video-A.....	L
Tool-Bar: Circular Array Video-A.....	L
Tool-Bar: Set Shape Set Point Video-A.....	L
Tool-Bar: Corner Round Radius Video-A.....	L

LightBurn Command Video B-List

	Sections
Edit: Undo/ReDo Video-B.....	L
Edit: Select All Video-B.....	L
Edit: Copy\Cut\Paste Video-B.....	L
Edit: Paste in place Video-B.....	L
Edit: Duplicate\Delete Duplicate Video-B.....	L
Edit: Delete Video-B.....	L
Edit: Convert to Path Video-B.....	L
Edit: Close Path Video-B.....	L
Edit: Close Selected Paths within Tolerance Video-B.....	L
Edit: Auto Join Selected Shapes Video-B.....	L
Edit: Optimize Selected Shapes Video-B.....	L
Edit: Select Open shapes Video-B.....	L
Edit: Select open shapes set to Fill Video-B.....	L
Edit: Select all shapes in current Cut Layer Video-B.....	L
Edit: Select contained shapes Video-B.....	L
Edit: Image Options Video-B.....	L
Edit: Settings Video-B.....	L
Edit: Device Settings Video-B.....	L
Edit: Machine Settings Video-B.....	L
Edit: Debug Drawing Video-B.....	L
Edit: Convert to Cut Video-B.....	L
Standard-Bar: Zoom Video-B.....	L
Standard-Bar: Update Camera Video-B.....	L
Standard-Bar: Quick Positioning I Video-B.....	L
Standard-Bar: Quick Positioning II Video-B.....	L
Standard-Bar: Quick Positioning III Video-B.....	L

LightBurn Table Of Contents



LightBurn Command Video C-List

	Sections
Tools: Trace Image Video-C.....	M
Tools: Apply Path to Text Video-C.....	M
Tools: Save Processed Bitmap Video-C.....	M
Tools: Frame Selection Video-C.....	M
Tools: Preview Video-C.....	M
Tools: Print & Cut Video-C.....	M
Tools: Calibrate Camera Lens Video-C.....	M
Tools: Calibrate Camera Alignment Video-C.....	M
Property Bar: Sizing Video-C.....	M
Property Bar: Positioning Video-C.....	M
Property Bar: Rotate Video-C.....	M
Property Bar: Text Commands Video-C.....	M

LightBurn Command Video D-List

	Sections
Arrange: UnGroup/Group Video-D.....	M
Arrange: Flip Layout Video-D.....	M
Arrange: 90 Rotate Layout Video-D.....	M
Arrange: Mirror Across Line Layout Video-D.....	M
Arrange: Direct Alignment Video-D.....	M
Arrange: Distribute Video-D.....	M
Arrange: Overall Alignment Video-D.....	M
Arrange: Order Video-D.....	M
Arrange: Break Apart Video-D.....	M
Control Panel: Art Library Video-D.....	M
Control Panel: Art Library Video-D.....	M
Control Panel: Console Video-D.....	M
Control Panel: File List Video-D.....	M
Control Panel: Laser Video-D.....	M
Control Panel: Library Video-D.....	M
Control Panel: Move Video-D.....	M
Control Panel: Properties Video-D.....	M
Control Panel: Variable Text Video-D.....	M
Control Panel: Fill Dialog Video-D.....	M
Control Panel: Line Dialog Video-D.....	M
Control Panel: Bitmap Control Video-D.....	M

LightBurn Table Of Contents



LightBurn Command Video Final Video

Sections

Window: Reset to Default Layout	M
Window: Views	M
Window: Views	M
Window: Menu Choices	M
Window: Languages Pull-Down Choices	M
Window: Help	M
New Features: Bitmap/Usability:	M

Laser Hands on Video List

Sections

Q01 HP Installation Video.....	M
Q02 LightBurn Core JOB A-to-B Video.....	M
Q03 HP Project Metal Cutting Video.....	N
Q04 HP Troubleshooting and P.M. Video.....	N
Q05 HP Air & O2 Control Video.....	N
Q06 LightBurn & Laser-Brass on HP Video.....	N
Q07 HP Project Deep Acrylic Job Video.....	Q
Q08 HP Electronics Tricks Video.....	Q
Q09 HP Metal Head Change Out.....	Q
Q10 LightBurn Table Positioning Video.....	Q
Q11 LightBurn Camera Video.....	L
Q12 LightBurn Z-Control Hands-On Video.....	L
Q13 Overhaul QA Testing.....	L
Q14 Overhaul QA Jobs.....	L
Q15 Overhaul Print & Cut Jobs.....	L

Major CheckPoints

Unpack & Inspect

1. Welcome to Best the Support in the Business

2. Meet Our Staff

3. Checklist of Items you will need

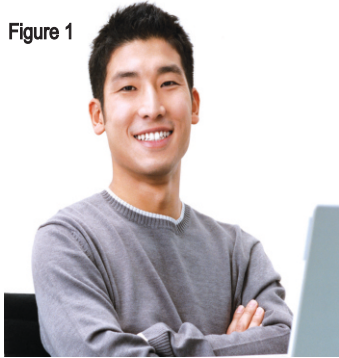
4. Total Support



Video: P11

Pre-Installation Procedures

Figure 1



List items to get Before Beginning Process

We Mean Business, Welcome to My Course!

1. Welcome to LightBurn:

A) Welcome to the LightBurn: the purpose of this Tutorial Manual and its Instructional PDF Fliers is not only get the unit up and running, but for you to make money with it.

B) There will be a series of One page subjects with Videos and add-on sheets of data or sample jobs to train you.

C) This, in concert with the Corel or EngraveLab Graphics courses and the On-site or PC to PC training, should have you proficient in no time. Installation is the most important job we do at Engraver's Choice. Now let's move forward.

TRAINING DATA COVERED HERE:

1. INTRODUCE YOU TO THE COURSE.
2. PRESENT THE ENGRAVER CHOICE TEAM.
3. LIST OF ITEMS.
4. WELCOME TO LIGHTBURN.
5. REMEMBER, YOU CAN CALL US WE WILL WALK YOU THROUGH PRE-INSTALLATION...(949-355-4000)

"Tip"

The Lightburn can run with any Software through the LightBurn Interface or Macros We support it from Corel X6 or better and from EngraveLab. These Packages are the Backbone of the Industry and are in most shops throughout the world.



Figure 4

Figure 2

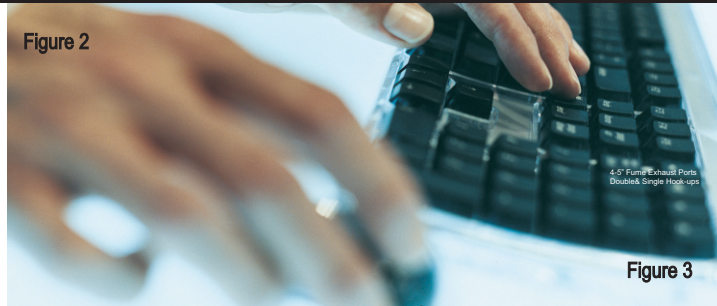


Figure 3

List items to get Before Beginning Process

2. Our Main Staff

A) The Main part of our Staff is our Post Assembly and Q.A. Teams.

B) The Core Operation is in SoCal. staffed with Technicians and Applications Experts. See our 'Bio' on the Website and catch our on-line training sessions.

C) I am Joe Braga, I have owned engraving and sign operations and run technical support for many of the manufacturers throughout the years. Catch my 'Bio' at www.engraverschoice.com. We are a balanced team and have demo sites throughout North America and are here to help. Call us anytime to instruct you with whatever questions you may have from software to hardware to pricing and shop marketing of your individual product lines.

3. List of items

A) We have a Short List of Items for the Pre-install.

B) They are listed below and cover the Electrical A/C power hook ups and surge protection. There are materials and cleaning items for the lasers.

C) The Lasers P/C should have 16 GIG and 900 GIG of free space. You need and WIFI wireless hook up to the internet; and cleanup your desktop. Also Speakers to listen to the Video Package for review. You will receive a email from me with a copy of just the pre-install and links to the Preinstall videos on YouTube. Watch them before starting the Pre-install process.

4. Support

Call us at Engraver's Choice

949-355-4000 or Text.

from 8 PM to 8 PM Monday thru Friday and 10-2 on Saturdays.

We provide Phone and PC-2-PC support as well as the Video Packages and Onsite service.

Sales@engraverschoice.com

Key Steps to our Goal

Main Task: List of Items

A: 2 = Grounded Extension cords

B: 2 = IsoBar Surge protectors (20-30 AMP)

C: Lens cleaner & White Lithium Grease.

D: Kim Wipes and Q-Tips

E: 3=12x12 Birch/Alder/Poplar wood pieces for testing

F: Personalized samples of your choosing

* BN-LINK Mini Wireless Remote Control Outlet Switch



WATCH FOR THIS:

