



UM-LRA-0009-V3

Laser Engraving Rotary Axis User Manual



Read Carefully Before Use
Keep for Future Reference

Disclaimer

Read this disclaimer completely and carefully before proceeding with the rest of the manual content.

1. **Product Modifications**

Any modifications or alterations to OMTech products void any warranties and may result in damage or injury. OMTech shall not be liable for any damages resulting from such modifications or alterations.

2. **Compliance with Laws**

Customers shall be liable for ensuring that the use of OMTech products complies with all applicable laws and regulations in their respective jurisdictions. OMTech shall not be responsible for any violations of laws or regulations resulting from the use of OMTech products.

3. **Correct Use**

Always use OMTech products only as directed in the accompanying manuals. Failure to follow instructions may result in injury or damage.

Always ensure the assembly, installation, operation, maintenance, or repair of OMTech products is carried out by a competent person.

Regular maintenance should be performed throughout the lifecycle of OMTech products. You are responsible for ensuring the products operate as intended.

Always wear appropriate protective gear.

4. **Third-Party Products**

OMTech shall not be liable for any damages or losses resulting from the use of third-party products in conjunction with OMTech products. Customers shall refer to the third-party's guidelines or/and warranties (if any) for any third-party products used.

5. **Limitation of Liability**

OMTech shall not be liable for any direct, indirect, punitive, incidental, special, or consequential damages to property or life, whatsoever arising out of or connected with the use or misuse of OMTech products. In no event shall OMTech's liability exceed the value of the products sold.

6. **Warranty**

Refer to the sales page for warranty information.

This disclaimer states the entire obligation of OMTech with respect to OMTech products. If any part of this disclaimer is determined to be void, invalid, unenforceable, or illegal, including but not limited to the warranty disclaimers, liability disclaimers, and liability limitations set forth above, the invalid or unenforceable provision will be deemed superseded by a valid and enforceable provision that most closely matches the intent of the original provision and the remainder of the agreement shall remain in full force and effect.



Welcome to the OMTech Community!

For helpful hints and instructional videos, visit our **Help Center** or join our official laser group! If you encounter any issues with your engraver, feel free to contact us. Our support team will respond **ASAP** to resolve your concerns.

Help Center

help.omtechlaser.com/hc/en-us | 

[First Time Setup](#) | [Safety](#) | [Maintenance](#) | [Troubleshooting](#) | [FAQ](#) | [Hot Tips](#)



Explore on your smart device

@omtechlaser



Official Website: omtechlaser.com

Technical Support: support@omtechlaser.com

Support Tel: +1 (949) 438-4949, Monday – Friday from 9:00 am – 5:00 pm (PT)

Address: Rygel Advanced Machines, 1150 N Red Gum St Ste F, Anaheim, CA 92806, USA.

Safety Information

- Before use, inspect the rotary axis and related components, for example, cables, for any damage, wear, or cracks.
- **ALL** personnel to be involved in the installation, operation, and maintenance of this machine **MUST** take proper training.
- **DO NOT** allow minors, untrained personnel, or personnel suffering from a physical or mental impairment that would affect their ability to install, uninstall, operate, maintain, or repair this machine.
- **DO NOT** place body parts in or near the engraving area.
- **ALWAYS** wear appropriate personal protective equipment such as protective goggles when operating your laser. If this product is being used on an open workbed, it is also recommended to secure the worksite or erect protective screens around the laser path to prevent injury to passersby.
- **DO NOT** use this product with objects too wide or too long.
- **ENSURE** that the engraver is completely powered off and it cannot be inadvertently powered on when installing or maintaining the rotary axis.
- **SECURE** the cable of the rotary axis, and **ENSURE** it is not within the laser engraving area.
- Avoid applying excessive force to the rotary axis, which may damage the components.
- Keep this product clean and free of potentially flammable or reflective dust and swarf.

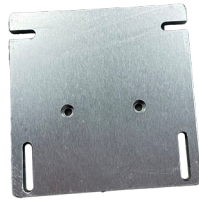
Specifications

Input Power Supply		DC 2.8 V, 4 A	
Pens	Max. Number	24	
	Recommended Max. Size	Length: 20 cm; Diameter: 8 mm	
Bottles	Max. Number	6	
	Recommended Max. Size	Length: 20 cm; Diameter: 10 cm	
Required Software		EZCad	
Compatible Machines		Marking Machines	
Dimensions		7.87 × 21.26 × 21.26 in.	200 × 540 × 540 mm
Net Weight		18.19 lb.	8.25 kg

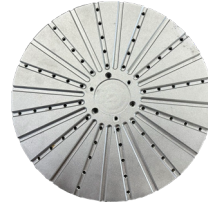
Package List



A



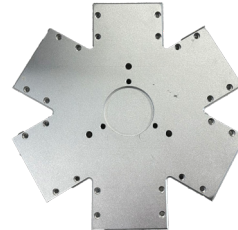
B



C



D



E



F



G



H



I



J



K

No.	Name	Qty.
A	Motor	1
B	Motor Base	1
C	Pen Table	1
D	Bottle Holders	6
E	Bottle Base Table	1
F	M3 × 10 Bolts	26
G	M4 × 10 Bolts	5
H	M4 × 15 Bolts	8
I	M4 × 20 Bolts	5
J	M3 Hex Wrench	1
K	M4 Hex Wrench	1

Note: The extra bolts are spare parts.

Installation

Install the motor first, and then you need to choose one of the following three ways to finish the rest of your installation according to your own need:

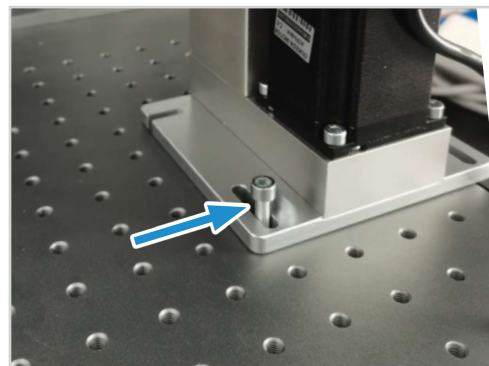
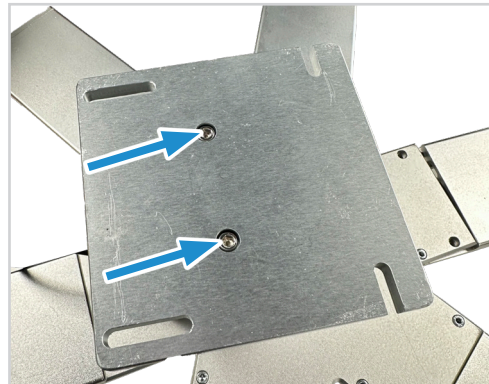
- a. Installing for Pen Engraving
- b. Installing for Bottle Engraving
- c. Installing for Other Workpieces Engraving

Installing the Motor

Parts and Tools

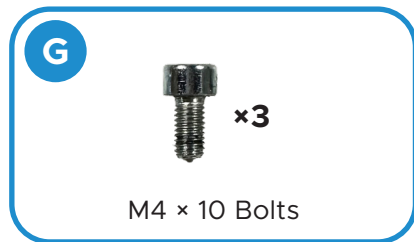


1. Attach the motor base to the motor using two M4 × 15 bolts.
2. Attach the motor base to the work table using four M4 × 15 bolts. If you are not using an OMTech machine, you might need to use different bolts.

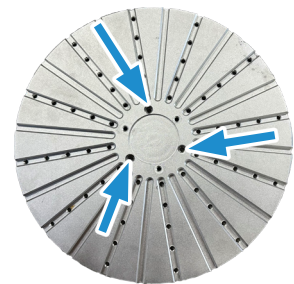


Installing for Pen Engraving

Parts and Tools



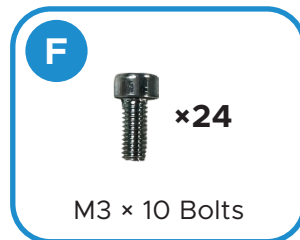
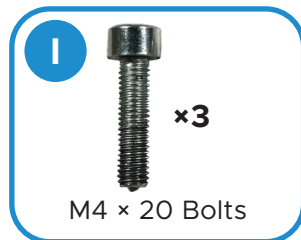
1. Secure the pen table onto the motor using three M4 × 10 bolts.



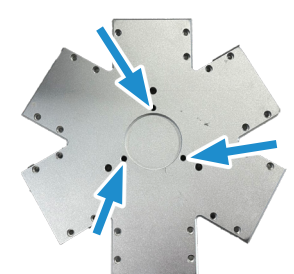
2. Plug the motor to your machine.

Installing for Bottle Engraving

Parts and Tools

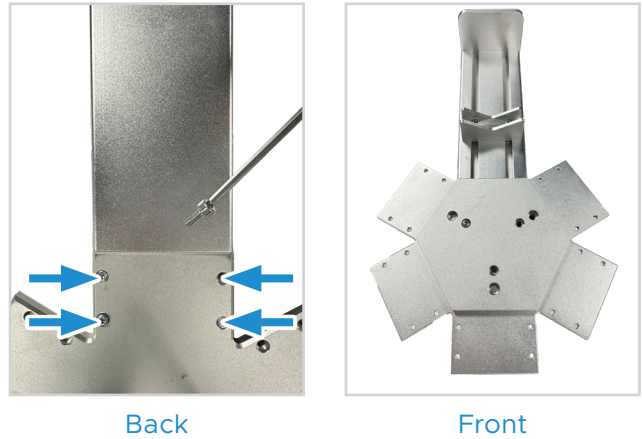


1. Attach the bottle base table to the motor top using three M4 × 20 bolts, aligning the three holes on the motor with the table.



Installation

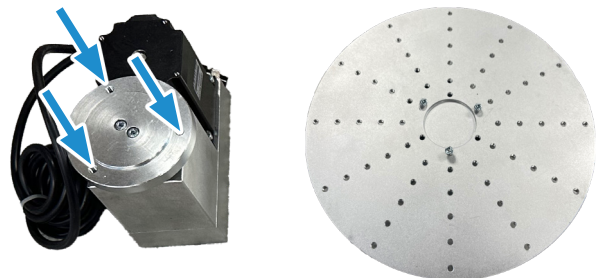
2. Flip the table assembly backward and connect the bottle holders to the bottle base table one by one using four M3 × 10 Bolts.



3. Plug the motor to your machine.

Installing for Other Workpieces Engraving

1. Secure the **OPPOSITE** side of the pen table onto the motor using three M4 × 10 bolts, aligning the three holes on the motor with the table.



2. Plug the motor to your machine.

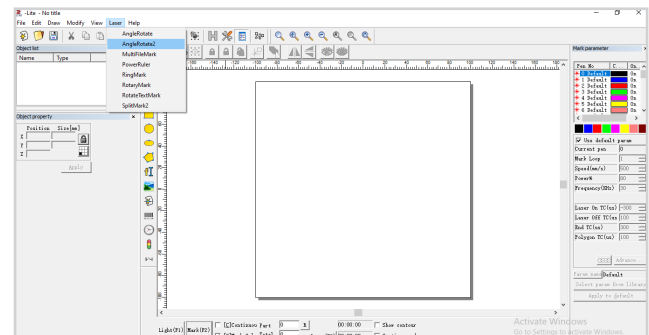
Choose one of the following three ways to operate according to your own need:

- Engraving Pens
- Engraving Bottles
- Engraving Other Workpieces

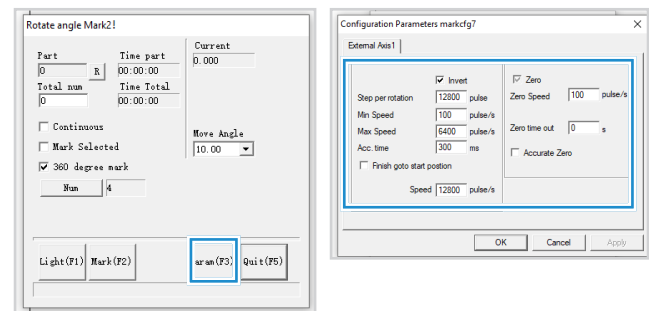
Engraving Pens

You can engrave 24 identical pens at most at the same time.

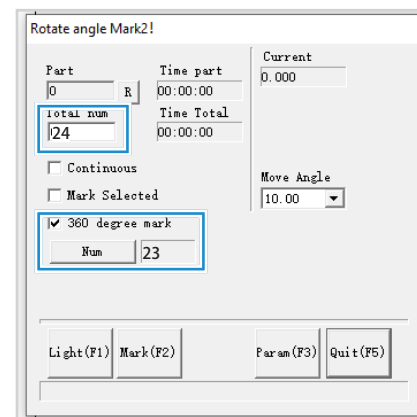
- Turn on your marking machine.
- Put 24 identical pens on the table.
- Open EZCad.
- Click **Laser**, and then click **AngleRotate2**.



- Click **Param (F3)**, fill in the following parameters, and Click **OK**.



- Fill in the **Total num** parameter which indicates the overall engraved object number, 24.
- Tick the **360 degree mark** parameter, and fill in its **Num** parameter as 23. This value should be one less than the value of the **Total num** parameter.
- Click **Quit (F5)**.
- Start engraving.



Operation

Engraving Bottles

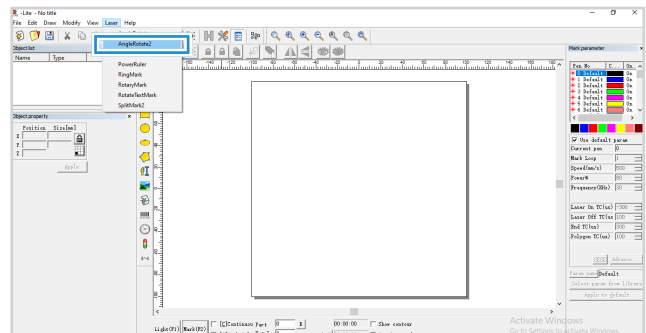
You can engrave 6 identical bottles at most at the same time.

1. Turn on your marking machine.
2. Put 6 identical bottles on the table. Move and fix the bottle support by strengthening the bolts to secure the bottles.

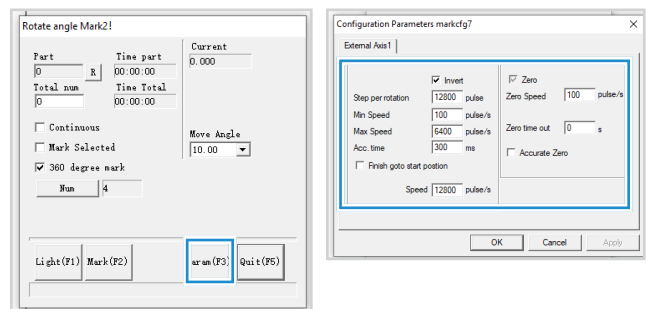
Bottle Support



3. Open EZCad.
4. Click **Laser**, and then click **AngleRotate2**.



5. Click **Param (F3)**, fill in the following parameters, and click **OK**.



6. Fill in the **Total num** parameter which indicates the overall engraved object number, 6.
7. Tick the **360 degree mark** parameter, and fill in its **Num** parameter as 5. This value should be one less than the value of the **Total num** parameter.
8. Click **Quit (F5)**.
9. Start engraving.

Engraving Other Workpieces

You can also secure the appropriate object on the table using M5 bolts to mark. Follow similar instructions as above to engrave.

Maintenance

- Regularly clean this product with a soft, wet cloth to remove any dust or debris that may accumulate. Allow time for any moisture to air dry before further use.
- Regularly inspect for any signs of wear, damage, or misalignment. Replace any part as necessary.
- Inspect the motor for signs of malfunction or wear. Listen for unusual noises or vibrations during operation, which may indicate a problem with the motor. Test the motor to ensure they are delivering the expected performance.
- Lubricate moving parts with a high-quality silicone oil (not included) as needed.
- Store in a clean, dry environment away from dust, moisture, and direct sunlight. Cover the axis to prevent damage and prolong its lifespan.

Disposal



Electrical products should not be disposed of with household products. In the EU and UK, according to the European Directive 2012/19/EU for the disposal of electrical and electronic equipment and its implementation in national laws, used electrical products must be collected separately and disposed of at the collection points provided for this purpose. Locations in Australia, Canada, and the United States may have similar regulations. Contact your local authorities or dealer for disposal and recycling advice.



Scan for the latest user manual

Laser Engraving Rotary Axis
User Manual

Rev. 9 Apr. 2025