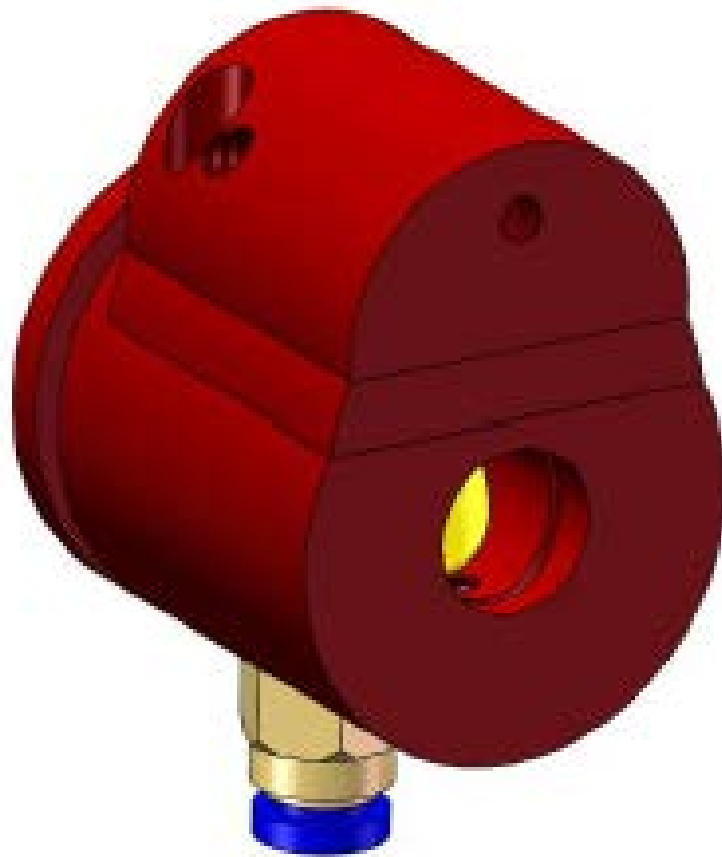


Red Laser Indicator User Manual



Read this manual completely before use. Keep for future reference.

SAFETY INFORMATION

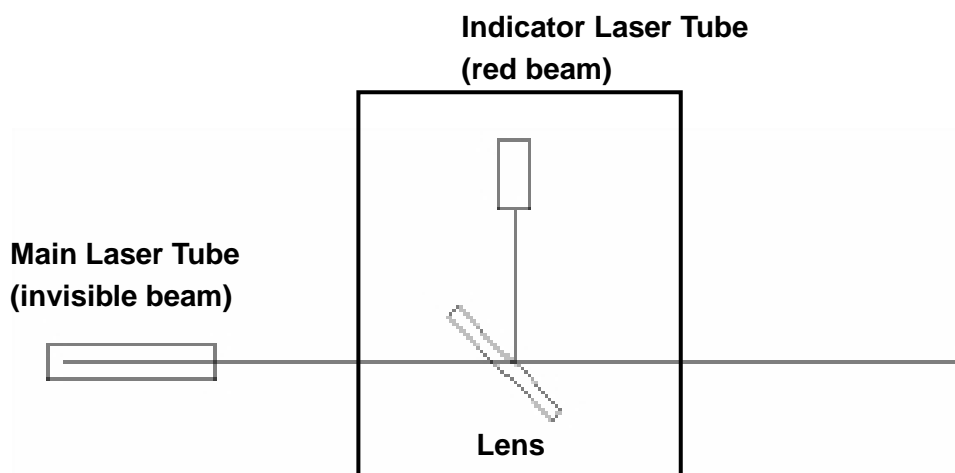
WARNING

- Follow all safety guidelines indicated in the user manual of your laser engraver.
- Ensure your laser engraver is powered off and unplugged during the installation of the red laser indicator.
- Keep the work area equipped with fire-fighting equipment and free of combustible, flammable, or explosive materials at all times.
- Ensure the work area is well-lit, clean, and free of distractions.
- **DO NOT** operate a laser engraver when tired or under the influence of alcohol, drugs or medication.

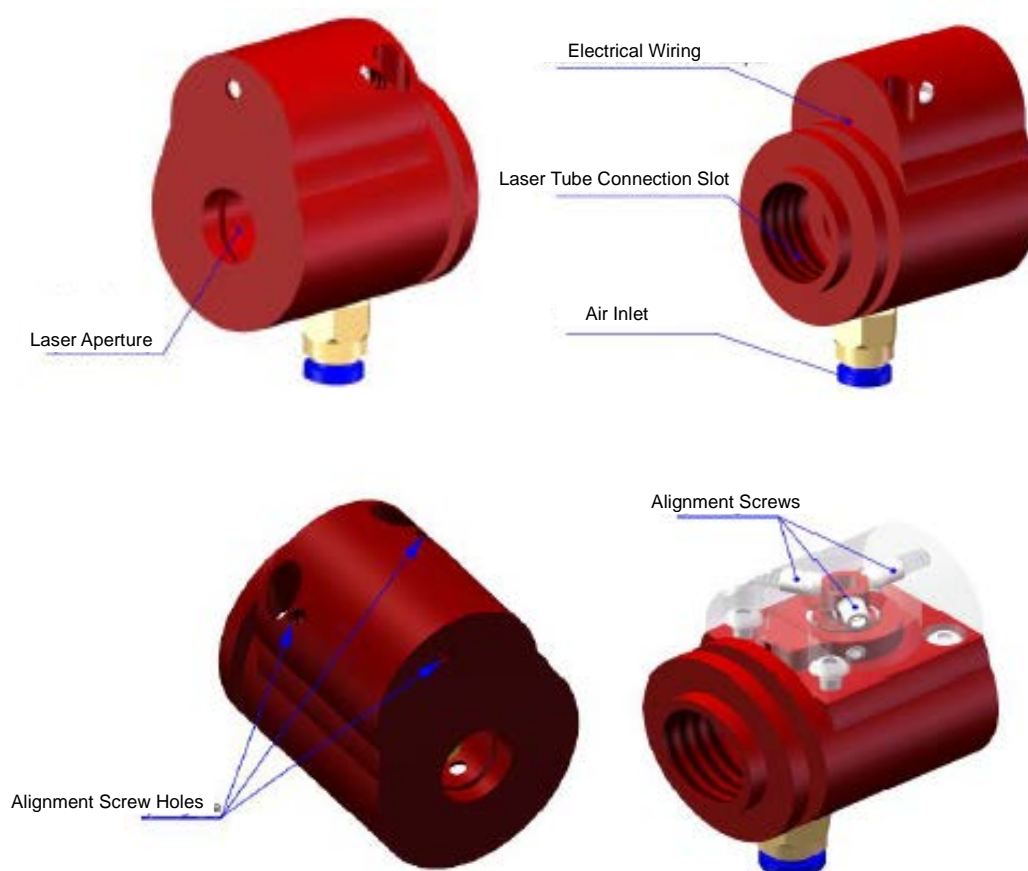
CAUTION

- Ensure sufficient airflow is provided to the red laser indicator to lower the working temperature of the unit and prevent dust from contaminating the lens.

LASER PATH



PARTS DIAGRAMS



| | |
|-----------------------------------|---|
| Laser Aperture | Opening through which the main & indicator beams travel together. |
| Air Inlet | Opening through which 5.3–15.9 cfm (150–450 L/min) of air reaches the indicator laser via tube. |
| Laser Tube Connection Slot | M18×0.75 mm connector attaching directly to the main laser tube. |
| Electrical Wiring | 4.5V power connection for the indicator laser, red for positive and black for negative. |
| Alignment Screw Holes | Openings through which the indicator laser's alignment screws are adjusted. |
| Front Alignment Screw | Adjusts the laser indicator along the Y axis by squeezing or relaxing the laser housing. |
| Side Alignment Screws | Adjust the laser indicator along the X-axis. |

INSTALLATION

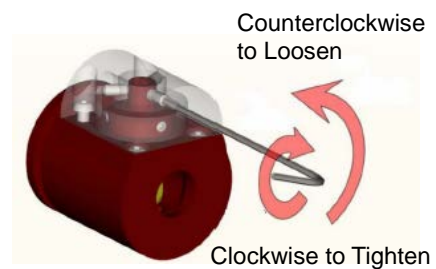
1. Twist the red laser indicator's connection slot onto the output end of your laser tube.
2. Fully tighten the red laser indicator into place while ensuring the alignment screw holes face up.
3. Connect a $\varnothing 4$ mm (0.16 in.) polyurethane airflow tube to the air inlet.
4. Connect the electrical wiring to the battery pack.
5. Install 3 AA batteries into the battery pack.

OPERATION

Turn the red laser indicator on and off using the switch on the battery box.

To adjust the alignment of the red laser indicator,

1. Plug-in and turn on your laser engraver.
2. Cut or engrave a dot onto some spare material.
3. Use a 2 mm (0.08 in.) hex wrench to loosen or tighten the three alignment screws until the red laser aligns with the location of the dot created in Step 2.



CONTACT US

Thank you for choosing our product. If you have any questions, please do not hesitate to contact us at help@cs-supportpro.com. We'll solve your issue ASAP.