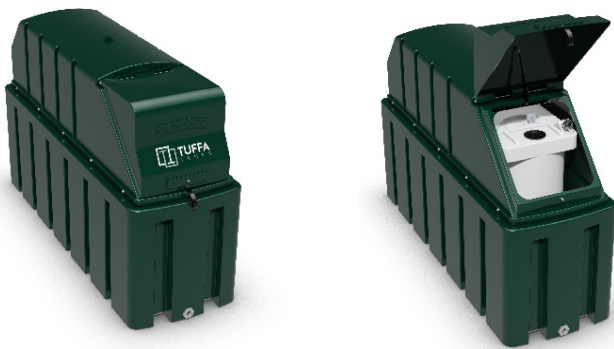


## TECHNICAL SPECIFICATION



<b>MODEL:</b>	<b>TUFFA 1350SLB BUNDED TANK</b>
<b>CAPACITY (l):</b>	<b>1350</b>
<b>LENGTH (mm):</b>	<b>2680</b>
<b>WIDTH (mm):</b>	<b>870</b>
<b>HEIGHT (mm):</b>	<b>1665</b>
<b>WEIGHT (kg):</b>	<b>200</b>
<b>MATERIAL:</b>	<b>Lower Linear Density Polyethylene</b>



### SPECIFICATION

- ▶ 2" BSP fill connection with cap and chain
- ▶ Vent
- ▶ Float level gauge
- ▶ Inspection lid
- ▶ Lockable hinged flip lid
- ▶ 1" BSP bottom outlet
- ▶ Tank pack (1" - 1/2" adaptor, ball valve and filter)

### OPTIONAL EXTRAS

- ▶ Watchman sonic
- ▶ 10mm top outlet
- ▶ Fire protection



**NEED MORE  
INFORMATION?**

CALL US ON:  
01889 567700

**STEEL MODELS ALSO AVAILABLE**



Tuffa UK Limited  
Dovefields Industrial Estate,  
Derby Road, Uttoxeter  
Staffs, ST14 8SW



**... for all your liquid storage needs**

**Contact us on T: 01889 567700 | E: sales@tuffa.co.uk | W: www.tuffa.co.uk**