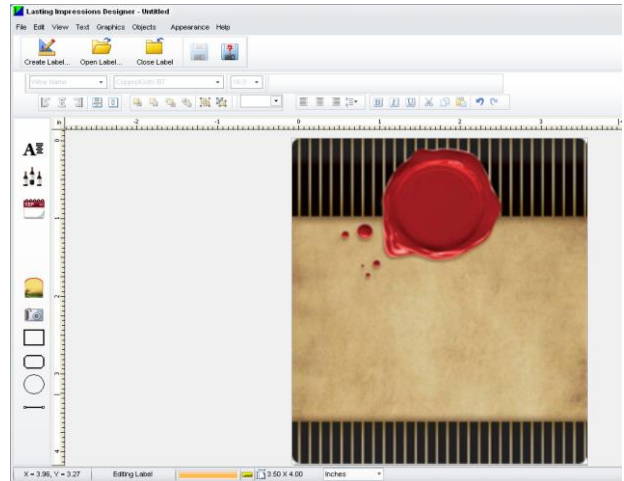
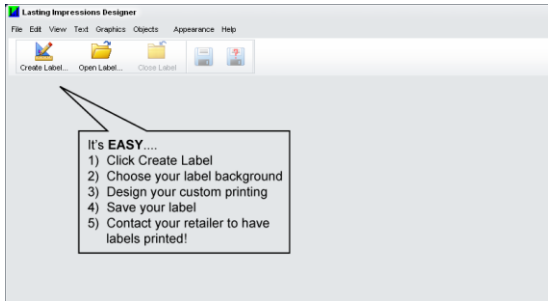




Lasting Impressions Designer Edition - Quick Start Guide


Easy steps to creating your own beautiful custom labels


Instructions are shown on the opening screen




1. Click  the **Create Label** icon.
2. Click on the image of the label you wish to use for your background. Please note we may not carry all of the available designs.
3. Click the insert text icon  to “Enter Your Text” and then click on the label background you selected.
Double-click on the text box that appears and enter your text. Once you have entered your text, click anywhere on the label background and sizing handles will appear around the text. You can now customize your text by selecting a font style, resize your text, move, or rotate it.
 - **Font style** – With the sizing handles active, select a font style from the drop-down menu at the top of the screen. *Tip – Click on the B, I or U at the top of the screen for special effects*
 - **Resize text** – With the sizing handles active, either type a point size from the drop-down menu at the top of the screen, or left click on a sizing handle and drag to make the text box bigger or smaller.
 - **Move text box** – Click and drag the text box to move it
 - **Rotate text** – Click, hold and drag on the green sizing handle dot to rotate text or select a specific angle by clicking on the rotate text drop-down menu at the top of the screen.



Click  to add a **Wine Name**, and then click on your label background. Now click on the wine name drop-down menu at the top of the screen to select a wine type. *Tip – Double click on the wine text box you created and enter your wine type if it is not listed. You can save the name for future use.*

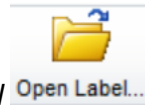
Click  to add a **Bottling Date**, and then click on your label background.

4. Click  at the top of the screen to save your label design. *Tip – The default location for saving your designs is **My Documents/MacDay Label Systems/Customers***
5. **Print your labels** – Talk to your retailer about how to transfer your saved label files to them for printing. For help on the **advanced features** listed below, print the *Advanced Features One Page Guide* found in the Help menu
 - Fun text styles
 - Alignment buttons
 - Copy and Paste
 - Shapes and lines
 - Inserting clip art and graphics, Grouping and layering, Preferences

Design your personalized printing using the icons and *Help* menu to take advantage of the many fun software features. You can use any font you like but note, thin swirly fonts do not print well in small point size. Photos do NOT print properly with these labels. Black and white clip art images do print well from .bmp or .jpg file formats from the Lasting Impressions catalogue or from your own file location. (NOTE: .jpg clip art images show on the design screen with a white background but become transparent when labels are printed.)



Save your label by clicking on the *Save As* icon in the top tool bar. Please name them using your last name and the label number (ie. Smith 72C, Jones 28, etc.)



To reopen your label for further editing, click on *Open Label* and select your label.

Print - When you are satisfied with your label and want to send it to us for printing, you will find your saved template in Documents/MacDay Label Systems/Customers folder. Simply attach this file to an e-mail and send it to us at *insert your store's email address* . Please include in the e-mail, your name, the number of labels you would like printed and a contact number in case we need to get in touch with you for any reason. You can also save your file to a memory stick and bring it into the store as well whichever is easier for you.