



# HOUSING RECONSTRUCTION REPORT

2024 UPDATE

APONTE, COLOMBIA



# Introduction

Think Coffee and Promotora Café de Altura have been successfully partnering with the farming community of Aponte since 2016. Our joint efforts have provided building materials to 92 beneficiaries in response to the devastating loss of many homes caused by a fault line.

Aponte, located in the southern region of Narino, Colombia, in the municipality of Tablon de Gomez, is a community of families who are descendants of the Inga, an indigenous ethnic group related to the Inca. Despite being more modernized, the people in this community still value and uphold the traditions of the Inga and establish their own rules and laws.

This is a community that is governed by tradition and by the people. Although an overall benefit for the protection of their culture and identity, it's often met with difficult challenges to recover from any struggles that may come their way.

When we first visited the village, we were able to witness firsthand the catastrophic fault line that tore apart the central part of the community, leading to many people losing their homes. However, we quickly identified a project we could work on together to help the community rebuild what was lost.

Given the size of the project, Think Coffee and Promotora agreed to provide additional funding for our reconstruction efforts.

For every pound of coffee imported, an additional \$0.40/lb would be allocated towards the project.

Every year, an average of twenty beneficiaries were selected to receive construction materials. Each year, we would purchase materials and deliver the materials ourselves.

This year, we focused on nine new beneficiaries who would receive materials.

# Our Approach

To make an impact at origin, our approach has always been to listen to the people in the communities where we work. In the case of Aponte, Colombia, the community identified the urgent need to rebuild their homes and community.

Once a project had been identified, we reached an agreement with our coffee partner to implement a project by allocating an additional \$0.40/lb of coffee imported.

## How it works

- We find a coffee community and begin a relationship with the farmers and exporter.
- We identify a project to help benefit the community.
- We import coffee, and an additional \$0.40/lb is allocated towards the project for every pound.
- We use the project fund to purchase building materials, hire a contractor, and renovate, improve, or construct a new home.
- 

TIMELINE	DETAILS	OUTCOME
March 2022	Identify Beneficiaries	<ul style="list-style-type: none"><li>• Visited more than 20 families.</li><li>• Conducted interviews and site visits.</li></ul>
August 2022	Select beneficiaries	<ul style="list-style-type: none"><li>• Identified those with the most urgent needs but also with the capacity to start construction.</li><li>• nine beneficiaries were selected.</li><li>• Hired a local architect and engineer to deliver construction plans.</li></ul>
April 2023	Distribute materials	<ul style="list-style-type: none"><li>• Purchased materials</li><li>• Distributed materials to the families ready for construction</li></ul>
February 2024	Beneficiary visits	<ul style="list-style-type: none"><li>• 80% of construction completed</li><li>• 2 beneficiaries remain and will resume construction in April 2024.</li></ul>

# \$0.40

for every pound of  
coffee imported

# \$42,404.80

total budget for 2022-2023



The budget reflects the agreement that for every price per pound purchased, an additional \$0.20/lb from both importer and exporter should be allocated towards the project. The total is an additional \$0.40/lb for every pound. As of 04/20/23, the total amount of coffee purchased is 106,012 lbs, making the total budget \$42,404.80.

**Think Coffee: \$21,202.40**

**PROCAAL: \$21,202.40**

# 9

families selected

# 19,000

bricks distributed

# 370

cement bags  
distributed

# 125

sheets of roofing  
delivered

# 20+

tons of other building  
materials distributed  
for construction

Following a lengthy halt in our reconstruction efforts due to travel restrictions, we finally visited the community of Aponte in March of 2022.

Our project coordinator, Carmen, who resides in Aponte, provided us with a list of twenty candidates for us to visit and assess as potential beneficiaries. Having worked closely with Carmen and the community for the past five years, we were well-versed in identifying families in need and approached only those with immediate needs, such as single mothers with limited resources and access to work.

### **After careful deliberation, we selected nine beneficiaries for our project.**

To expedite the process of distribution and construction, as well as manage our costs, we employed a local architect and engineer to determine the plans for each beneficiary and the necessary quantity of materials required. This allowed us to stay within our budget for each beneficiary.

Once we had a clear plan in place, we began distributing materials to the families who were ready to begin construction. Although we would love to deliver a complete home from start to finish, we believe it would be better if each beneficiary paid for their construction labor. Our objective is to create a joint project, fostering a relationship in which our work is not seen as a gift but a collaborative effort to rebuild the community.

Our work has undeniably had a significant impact in the community. Unlike other agencies that make empty promises during site visits, we are the only company that takes decisive action and delivers real help to the people of Aponte. Our efforts have been widely recognized and praised by the community, and we will continue to be a dependable source of support for those in need.

# Beneficiaries



Newly constructed home!

## Leidy Jansasoy- San Francisco

Leidy lived with her husband and child in her father's home. They shared a small room between the three of them. They were given a piece of land next to her father's home and will construct the home there. It is also located in the same area where they cultivate coffee. In April of 2023, we distributed all the materials to build a new home, and construction was completed in November of 2023.

## Eroina Chasoy- Paramo Bajo

Eroina lives in a home that, at one point, was the farm home her family used during harvest. Because of the loss of her home in Aponte, the house was divided between families. The portion of her home is currently shifting because the home was constructed on a fault line. Eroina managed to find a construction worker who was able to stabilize the home and has renovated the root cause of the problem which was the bathroom area. Eroina now has a fully constructed bathroom that is more stable.



Newly constructed bathroom.



Completed construction photo coming soon.

## Celimo Chasoy Rojas- Paramo Bajo

Celimo, his wife, and three children live in a home made out of adobe and wood. The adobe is well made and is a safe and viable material. The kitchen and bathroom, however, are not in good condition. The kitchen is made out of wood, with no proper ventilation or protection from the rain. The bathroom structure is held by tarp material, and there is no toilet.

Our support will consist of providing an entirely new kitchen and bathroom. Both will be located where the kitchen currently exists.

In April of 2023, we distributed all the necessary materials, and construction is underway.

# Beneficiaries



Newly constructed bathroom.

Miguel Janamejoy- Paramo Alto

Miguel and his wife, Anamelina, live in a new home made entirely from adobe. They didn't have enough to build a bathroom with a toilet and shower so we will be providing them with the entire structure of the bathroom and washroom. In April of 2023, we distributed all the materials, and a new bathroom was completed in January 2024.

Yolanda Yanira Santacruz Chasoy- Paramo Alto

Yolanda lived with her husband and two-year-old child in her father's home. She had a piece of land that was given to her by her father and would like a home for her family. She has plenty of space to build a proper home suitable for her entire family. In April of 2023, we distributed all of the materials, and construction was completed in November of 2023.



Yolanda and her new home!



Photo coming soon.

Oneida Chindoy- San Francisco

Oneida is a single parent of two who currently lives with her father in their family home. The three of them currently share a small room. Her father has been gracious enough to give her a piece of land where we can construct a new home for her. The land has enough space for her and her family to live comfortably. In July of 2023, we distributed the necessary materials, and construction was completed in November of 2023.

Because of heavy rains we were unable to visit and take a photo of the completed house. We will return in a few months to see their new home.

# Beneficiaries



Newly constructed home!

## Dora Janamejoy- Aponte Centro

Dora lives with her husband and two children in the center of town. They are currently renting their home and are currently in the process of building a new home not far from where they currently live. Since we cannot build an entirely new home for them, we will distribute the materials needed to complete the home currently under construction.

In July of 2023, the family completed construction and is now living in their new home.

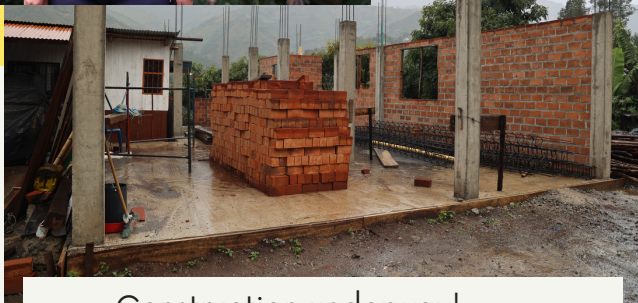
## Magaly Janamejoy- San Francisco

Magaly, her husband, and her child currently live in one of the temporary homes built by the community when the government's first and last round of reconstruction efforts occurred. They are renting the home and have a piece of land where they can construct a new one. It is located near her father's home and, where they cultivate coffee.

In August of 2023, Magaly received all the necessary materials to construct a new home, and construction is underway.



Photo coming soon.



Construction underway!

## Eliana Chasoy- San Francisco

Eliana was a single parent who lived with her mother in a rented home in central Aponte. At the time of meeting her, she had a child who suffered from cerebral and paralytic syndrome. It was a big challenge for her and her child to live in the home they rented because it had no proper wheelchair access. Our goal was to give her and her family a new home where they could live more comfortably. But unfortunately, Eliana's child lost his battle with the disease and passed away in November 2022.

She thought that maybe with her child's passing, she would no longer be a candidate for the project, but we assured her that she would be receiving the full scope of work we promised her and her family.

Her grandfather was nice enough to give her a piece of land next to their home off the main road. The space is limited, but the architect will design something specific for her. In November of 2023, we distributed all the materials and construction has been underway since January 2024.



# Our 2024 Goals

With each passing year and each beneficiary, we gain valuable insights on how to approach our project. Our goal is to never be complacent and to continually seek out ways to have an even greater impact on those in need. We recognize that perfection is not always achievable, but we remain committed to acknowledging our shortcomings and making the necessary improvements. This has always been and will continue to be our approach.

# 1

## **Find a new group of beneficiaries.**

Road closures and security concerns thwarted our attempt to visit the community of Aponte in 2023. However, we will not be deterred in our mission to prepare for the 2024 construction efforts. In fact, we will be visiting in January of 2024 to conduct interviews for the families who wish to participate in the next phase of our project. Nothing will stand in the way of our commitment to this important endeavor.

# 2

## **Plan and strategize.**

We must work with the same engineer who assisted us in our previous phase to ensure that each beneficiary is receiving the necessary construction materials to suit their needs. Conducting interviews, planning site visits, and taking measurements are all critical components of this process. Our goal is to keep costs low while still being able to work with as many families as possible.

# 3

## **Deliver and Execute!**

Make sure that the required materials are acquired and delivered promptly to those who need them. It's important to keep in touch with each person regularly and maintain open communication to ensure that everything runs smoothly.