



WH200004



WH200003

Radiance Series Track Light

Description

- Built-In driver for a Compact and Elegant Look and Easy installation
- Beam angle: 15D/24D/38D/60D
- SDCM<5 is the basic, if customer need, SDCM<3
- UGR<16; CRI>90 or CRI>95, R9>0.
- Power: 35W; input: 90-277 VAC
- On/off, Triac, 0-10 V is available.

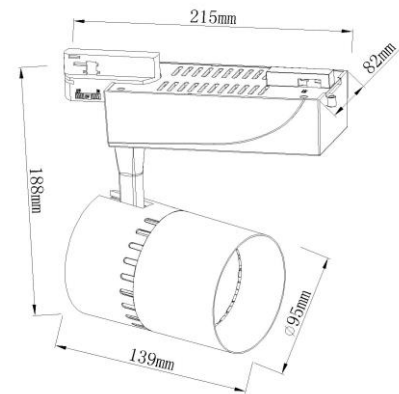
Characteristic

- Power Supply: 35W
- Power Factor: >0.95
- UGR<16
- Lamp body Color: white/black
- LEDs Brand: Luminus for the standard type.



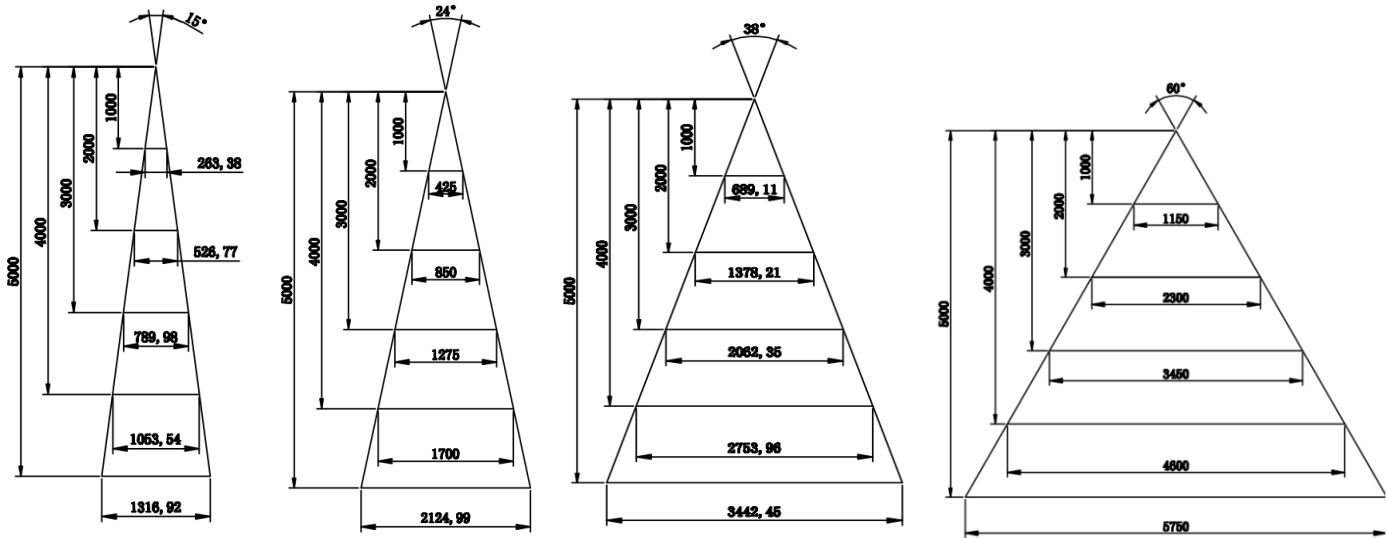
CR190
CR195

50000 H

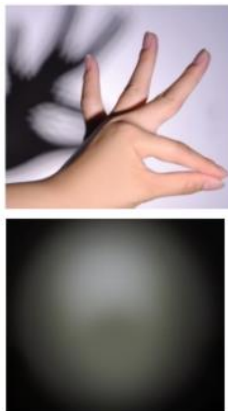
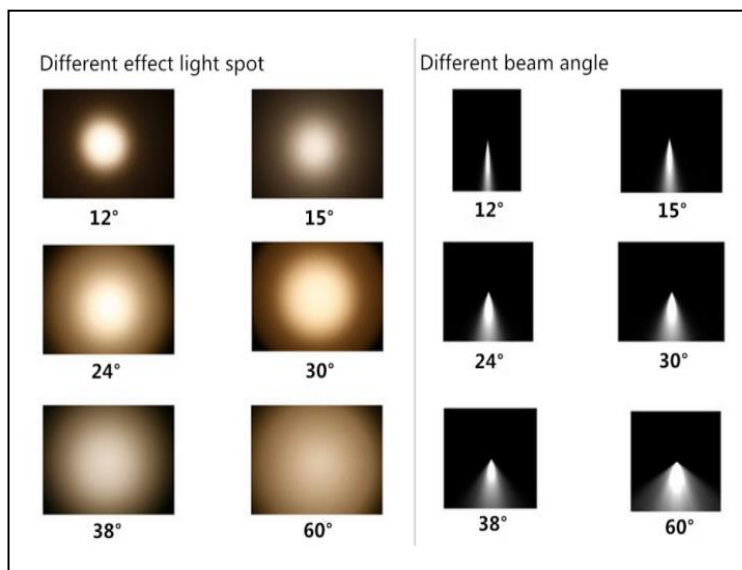


NO.	Power	Size	Efficiency	Input Voltage	Installation ways	CCT
WH200003	32W	Φ88mm×117mm×194mm Φ3.46" x 4.60" x 7.63"	90lm/w	AC90-277V	2 wires / 3 wires / 4 wires track mounted	4000K or customized

NO.	Power	Size	Efficiency	Input Voltage	Installation ways	CCT
WH200004	35W	Φ95mm×139mm×188mm Φ3.74" x 5.47" x 7.40"	90lm/w	AC90-277V	2 wires / 3 wires / 4 wires track mounted	4000K or customized



Why Our Lights: Enhanced Colors, Light Softness and Light



Ra 95
High CRI

Ra 90
Moderate CRI

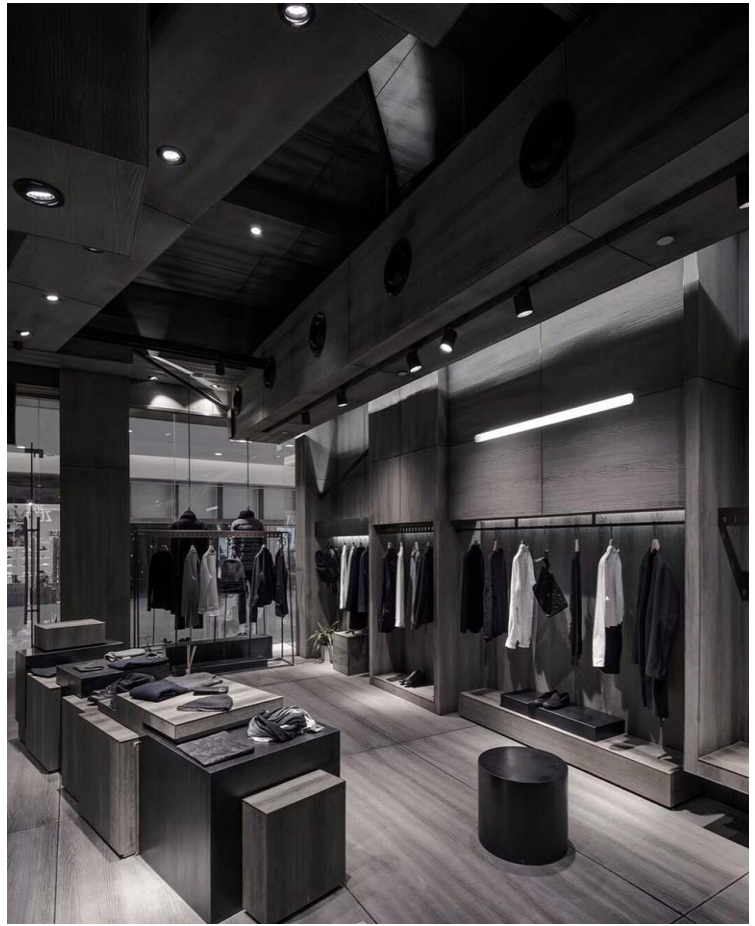
Ra 80
Standard CRI



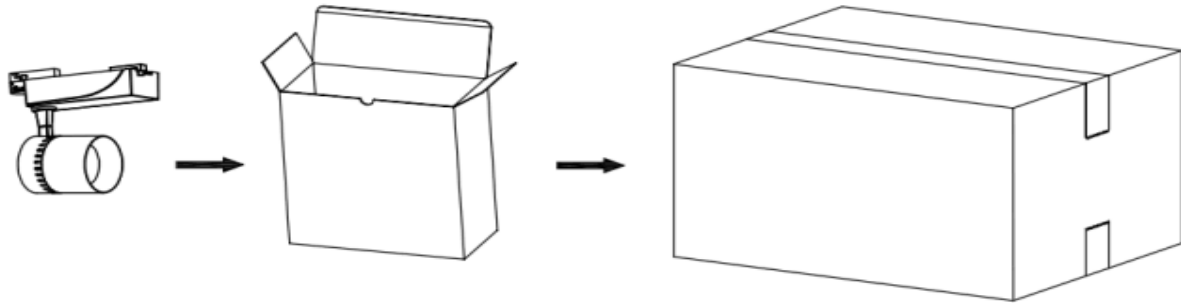
Applications: Suitable for clothing stores, Men 's wear, shopping mall, Cars showroom....



Cars showroom



Packing Information:



Product Name	Item No.	Dimension (inch)	Inner packing size (inch)	Outer packing size (inch)	Net weight (lb)	Gross weight (lb)	Package Carton (PCS)
Faster Series Track Lights	DT-P9513G- G010Y-035	Φ 3.74" x 5.47" x 7.40"	10.86"*10.31" *5.04"	22.24"*15.35" *21.26"	3.59 lb/box	46.5 LB/CTN	12PCS/CTN

Storage and use conditions:

1. The storage environment requires waterproof, moisture-proof and dust-proof;
2. Storage temperature: -45° C-+80° C;
3. The storage humidity is between 30% and 95%;
4. Use voltage: AC90-277V;
5. Working environment temperature: Indoor -40° C - +50° C;
6. Relative humidity: 10% - 95%.

Note:

1. This product is suitable for use in indoor and dry environments. It should avoid to installed in places with heat, hot steam, moisture, corrosive gases, etc., and prevent the entry of oil, water, or other liquids, so as not to affect product performance and life.
2. For the sake of safety, non-professionals and non-authorized personnel cannot perform internal maintenance and replacement of parts on the product;
3. Please use LED ceiling light under the rated working voltage. Below or higher than the rated voltage will damage the internal components of the lamp;
4. When installing the track light, the track head must be fully engaged on the track strip card slot, and tighten the card position to stuck the track head , to ensure electrical connection between the rail head and the rail bar connection copper a good contact.
5. Do not look directly at the light source when the light is on, and avoid eye burns.
6. When a smoke or unpleasant odor is detected during start-up or use, turn off the main power immediately.
7. Shut off the power supply must be shut down for five minutes, so that after the capacitor has a full discharge time, the product can only be maintained after cooling.