

Regulations & compliance

FCC statement

Warning: Changes or modifications to this unit not expressly approved by the party responsible for compliance could void the user's authority to operate the equipment.

NOTE: This equipment has been tested and found to comply with the limits for a Class B digital device, pursuant to Part 15 of the FCC Rules. These limits are designed to provide reasonable protection against harmful interference in a residential installation. This equipment generates, uses and can radiate radio frequency energy and, if not installed and used in accordance with the instructions, may cause harmful interference to radio communications.

However, there is no guarantee that interference will not occur in a particular installation. If this equipment does cause harmful interference to radio or television reception, which can be determined by turning the equipment off and on, the user is encouraged to try to correct the interference by one or more of the following measures:

- Reorient or relocate the receiving antenna.
- Increase the separation between the equipment and receiver.
- Connect the equipment into an outlet on a circuit different from that to which the receiver is connected.
- Consult the dealer or an experienced radio/ TV technician for help.

This device complies with Part 15 of the FCC Rules. Operation is subject to the following two conditions:
(1) This device may not cause harmful interference.
(2) This device must accept any interference received, including interference that may cause undesired operation.

ISED regulatory compliance

This device contains licence-exempt transmitter(s)/receiver(s) that comply with Innovation, Science and Economic Development Canada's licence-exempt RSS(s). Operation is subject to the following two conditions:
1. This device may not cause interference.
2. This device must accept any interference, including interference that may cause undesired operation of the device.

L'émetteur/récepteur exempt de licence contenu dans le présent appareil est conforme aux CNR d'Innovation, Sciences et Développement économique Canada applicables aux appareils radio exempts de licence.

L'exploitation est autorisée aux deux conditions suivantes :

1. L'appareil ne doit pas produire de brouillage;
2. L'appareil doit accepter tout brouillage radioélectrique subi, même si le brouillage est susceptible d'en compromettre le fonctionnement.

RF exposure compliance

This equipment complies with FCC/IC radiation exposure limits set forth for an uncontrolled environment. This equipment should be installed and operated with minimum distance 20cm between the radiator and your body.

Cet équipement est conforme aux limites d'exposition aux radiations FCC/IC établies pour un environnement non contrôlé. Cet équipement doit être installé et utilisé avec une distance minimale de 20 cm entre le radiateur et votre corps.

Toucan For additional info, visit our website at www.toucan.solutions.

VuPoint Company Limited (USA Office):
710 Nogales Street, City of Industry, CA 91748

Follow us for the latest updates:

facebook.com/ToucanUSA

instagram.com/ToucanUSA

VuPoint (Europe) Company Limited:
Innovation Center, Longbridge Technology Park,
Longbridge, Birmingham B31 2TS



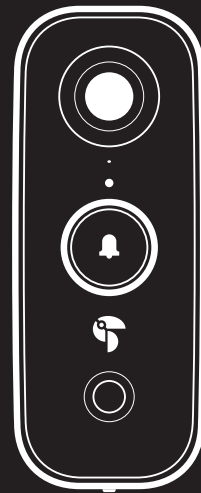
©2020 VUPOINT SOLUTIONS, INC. All Rights Reserved.

The Toucan logo and Toucan are trademarks or registered trademarks of VuPoint Solutions Inc. in the United States and other countries. App Store is a registered trademark of Apple Inc. iOS is a registered trademark of Cisco Technology, Inc. in the U.S. and other countries and is under license. Android and Google Play are registered trademarks of Google LLC. Product names, logos, brands and other trademarks referred to herein are the property of their respective trademark holders. All trademarks remain the property of their respective holders, and are used only to describe the products or services being provided. These trademark holders are not affiliated with VuPoint Solutions, Inc. They do not sponsor or endorse VuPoint Solutions, Inc's products or services.



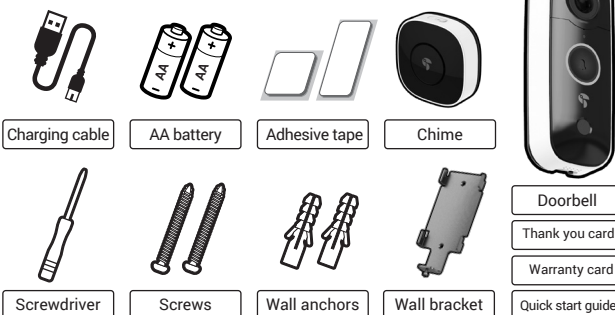
Wireless video doorbell

Use the video doorbell to see and talk to whoever is at your door from anywhere. Feel more secure when away from home.



TVD100WU

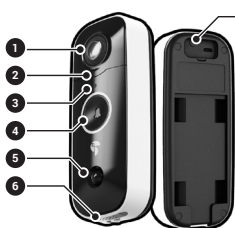
Items included



Get to know your video doorbell and chime

Doorbell

1. Camera lens
2. Microphone
3. Light sensor
4. Doorbell
5. Motion sensor
6. Speaker
7. SET button



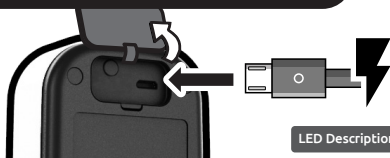
Chime

8. LED indicator
9. SET button
10. Speaker



Charge your video doorbell

Open the back cover, plug in micro usb cable to charge the video doorbell.



LED Description
Solid Red Charging Battery
Solid Blue Battery Fully Charged

Setup your video doorbell

Download Toucan app

Scan QR code or visit toucan.solutions/app

Available at Apple App Store and Google Play™



Open the app to add camera.



Press and hold the SET button until LED light blinks to enter the setup mode.



Follow the camera voice navigation to complete setup.

LED Description
Flashing BLUE Setup Mode
Flashing PURPLE Connecting to cloud server
Flashing RED Connection Failed

LED Description

Pairing your chime with your video doorbell

The chime included in the package is already paired with your doorbell



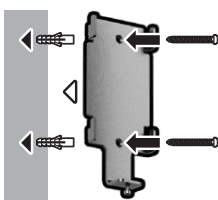
Press and HOLD the Set button until LED light blinks



Press and HOLD doorbell button to pair with chime

Chime LED Description
Flashing BLUE Pairing Mode
BLUE Flashes Once Select Next Chime Sound

Install your video doorbell and chime



1. Drill holes for wall anchor placements
2. Insert wall anchors
3. Mount wall bracket with screws



4. Place the doorbell on bracket



5. Tighten the lock screw with cross screw drive



6. Place the adhesive tape to the back of the chime and stick to the wall in a suitable location inside your home*

* If using the adhesive to mount the doorbell, please adhere to the surface and wait 24-48 hours to enable maximum bond strength before adding the doorbell

** you can mount the doorbell using just the adhesive on UPVC, wooden or smooth surface door frames (not suitable for brick or stone)

** Chime supports >50m of SUB-1G connection distance with video doorbell

For detailed setup procedure, please refer to Toucan website or scan the manual QR code above

