

Please read and save these instructions. Read carefully before attempting to assemble, install, operate or maintain the product described. The continual observance of these procedures will help increase your production and extend the life of the equipment.

FUME DOG HANGING FUME ARM



User's Manual



Please read and save these instructions. Read carefully before attempting to assemble, install, operate or maintain the product described. The continual observance of these procedures will help increase your production and extend the life of the equipment.

FUME DOG

HANGING FUME ARM

TABLE OF CONTENTS

Light Kit Assembly (Optional)2

Wall Mount Bracket Installation5

Spring Installation6

Wall Mount Bracket Specifications7

Maintenance8

Parts List9

Contact Information10

Please read and save these instructions. Read carefully before attempting to assemble, install, operate or maintain the product described. The continual observance of these procedures will help increase your production and extend the life of the equipment.

FUME DOG HANGING FUME ARM

Light Kit Assembly (Optional)



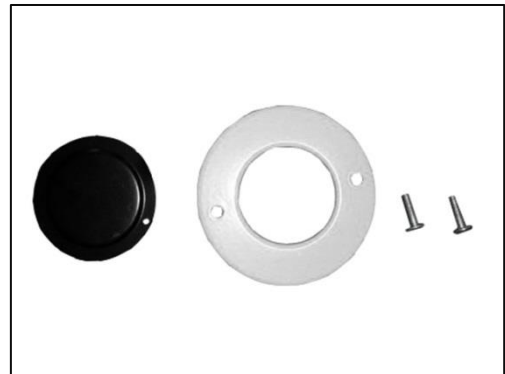
1. Uninstall the hose.



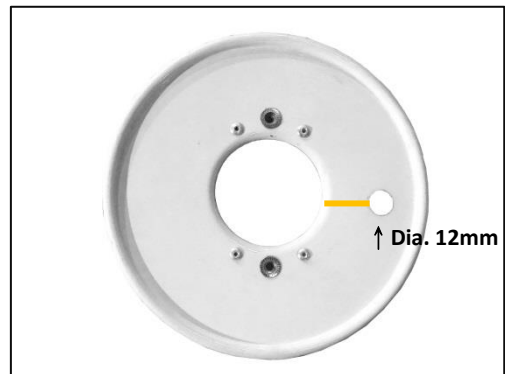
2. Uninstall the hood.



3. Take down the light frame.



4. Take off the Light Cover and Working Light Fixing Plate.



5. Measure 23mm from the hole center to the edge (Red line).

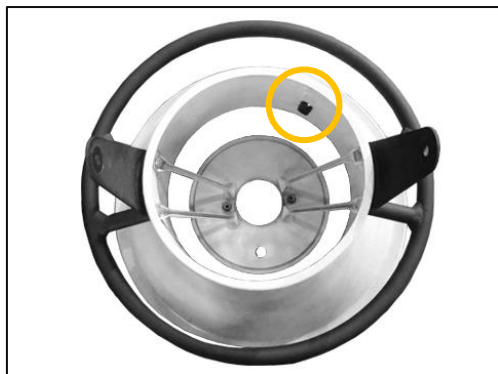
Please read and save these instructions. Read carefully before attempting to assemble, install, operate or maintain the product described. The continual observance of these procedures will help increase your production and extend the life of the equipment.

FUME DOG HANGING FUME ARM



6. Distance between hole A and B as below.

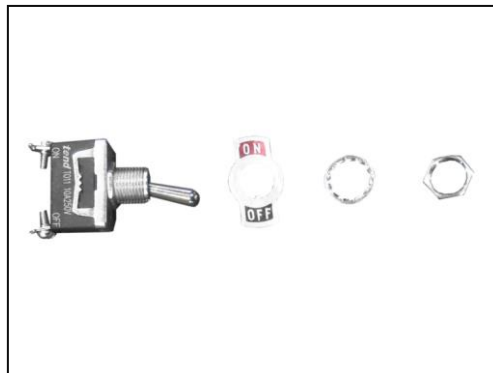
	Red Line	Blue Line
Ø 5"	50mm	31mm
Ø 6"	65mm	39mm
Ø 8"	70mm	65mm



7. Install the light frame and the cable cover.



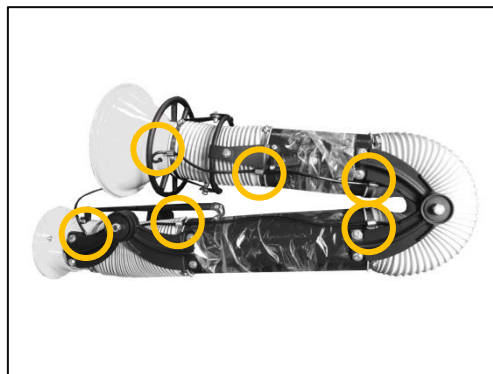
8. Install the working light to the base and plate.



9. Install the switch on the hood.



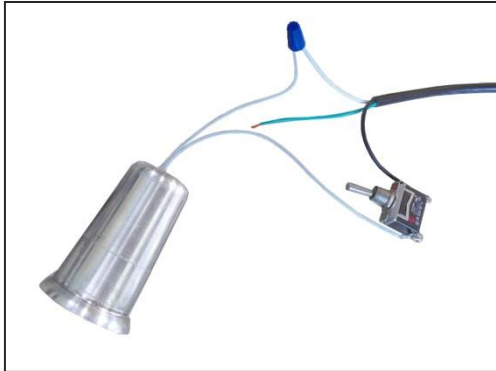
10. Install the hood on the arm.



11. Install the cord.

Please read and save these instructions. Read carefully before attempting to assemble, install, operate or maintain the product described. The continual observance of these procedures will help increase your production and extend the life of the equipment.

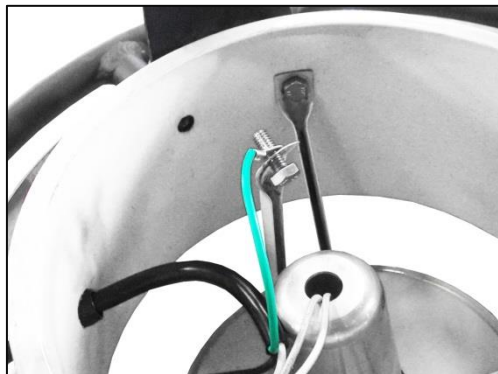
FUME DOG HANGING FUME ARM



12. Connect the light and the cord.



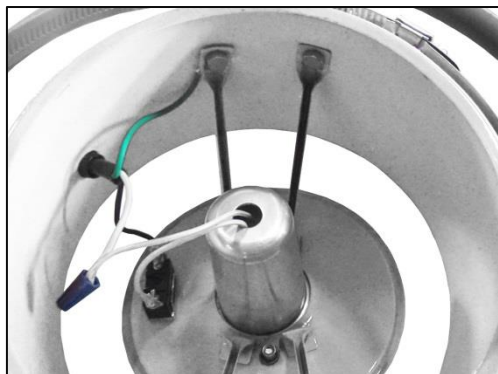
15. Install the hose.



13. Connect the green cord to the light frame.



16. Complete.



14. Then install on the hood.

Please read and save these instructions. Read carefully before attempting to assemble, install, operate or maintain the product described. The continual observance of these procedures will help increase your production and extend the life of the equipment.

FUME DOG HANGING FUME ARM

Wall Mount Bracket Installation



1. Using the appropriate hardware, secure the wall mount bracket using the pre-drilled holes in the bracket.



2. Insert the flanged pipe through the wall mount bracket from the bottom side (see photo below).



3. Install the fume arm swivel base, with the hardware supplied with the arm, from the bottom side. This secures the flanged pipe into the wall mount bracket.

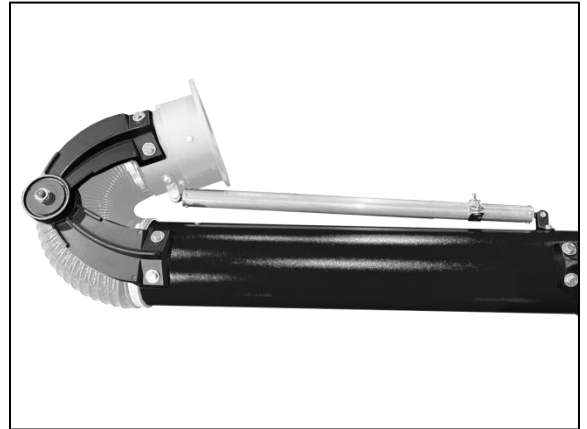
Please read and save these instructions. Read carefully before attempting to assemble, install, operate or maintain the product described. The continual observance of these procedures will help increase your production and extend the life of the equipment.

FUME DOG HANGING FUME ARM

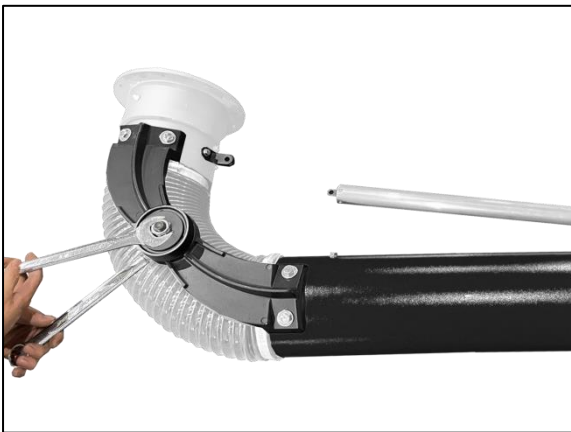
Spring Installation



1. Install ahead side of spring on the fume.



3. Bending the arm base to able to install another side of spring.

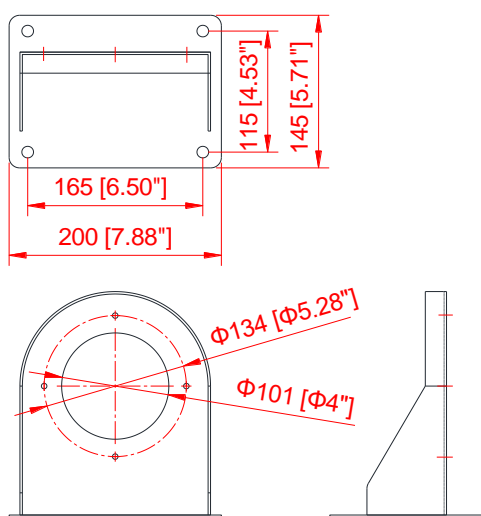


2. Loosen the bolt on both side of joint.

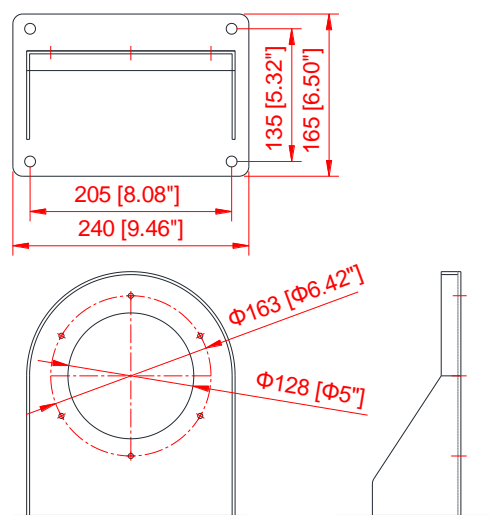
Please read and save these instructions. Read carefully before attempting to assemble, install, operate or maintain the product described. The continual observance of these procedures will help increase your production and extend the life of the equipment.

FUME DOG HANGING FUME ARM

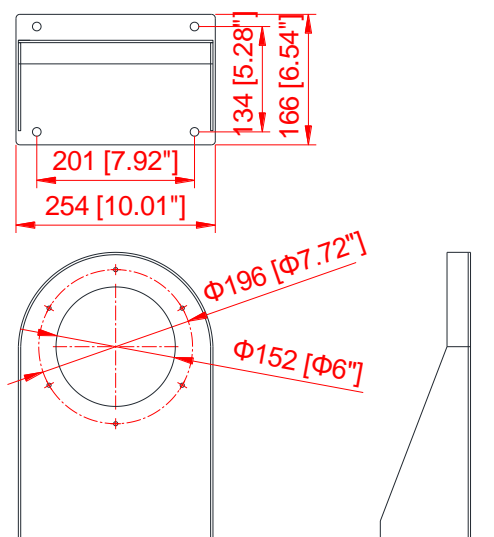
Wall Mount Bracket Specifications



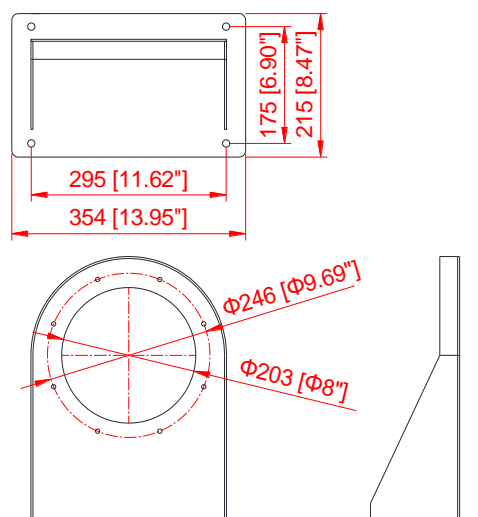
4" Wall Bracket



5" Wall Bracket



6" Wall Bracket



8" Wall Bracket

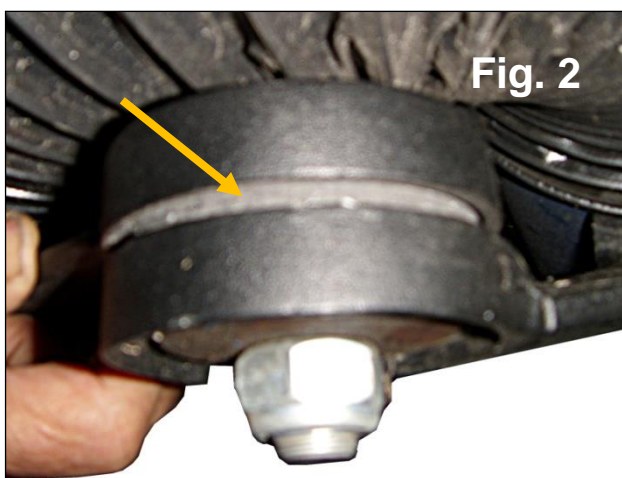
Please read and save these instructions. Read carefully before attempting to assemble, install, operate or maintain the product described. The continual observance of these procedures will help increase your production and extend the life of the equipment.

FUME DOG HANGING FUME ARM

Maintenance

1. Hood or arm will not stay in the required position:

Adjust the External Joints by tightening the bolts with (2) wrenches (as shown in Fig. 1). This increases the force on the friction discs (see Fig. 2).



2. Arm does not turn with ease:

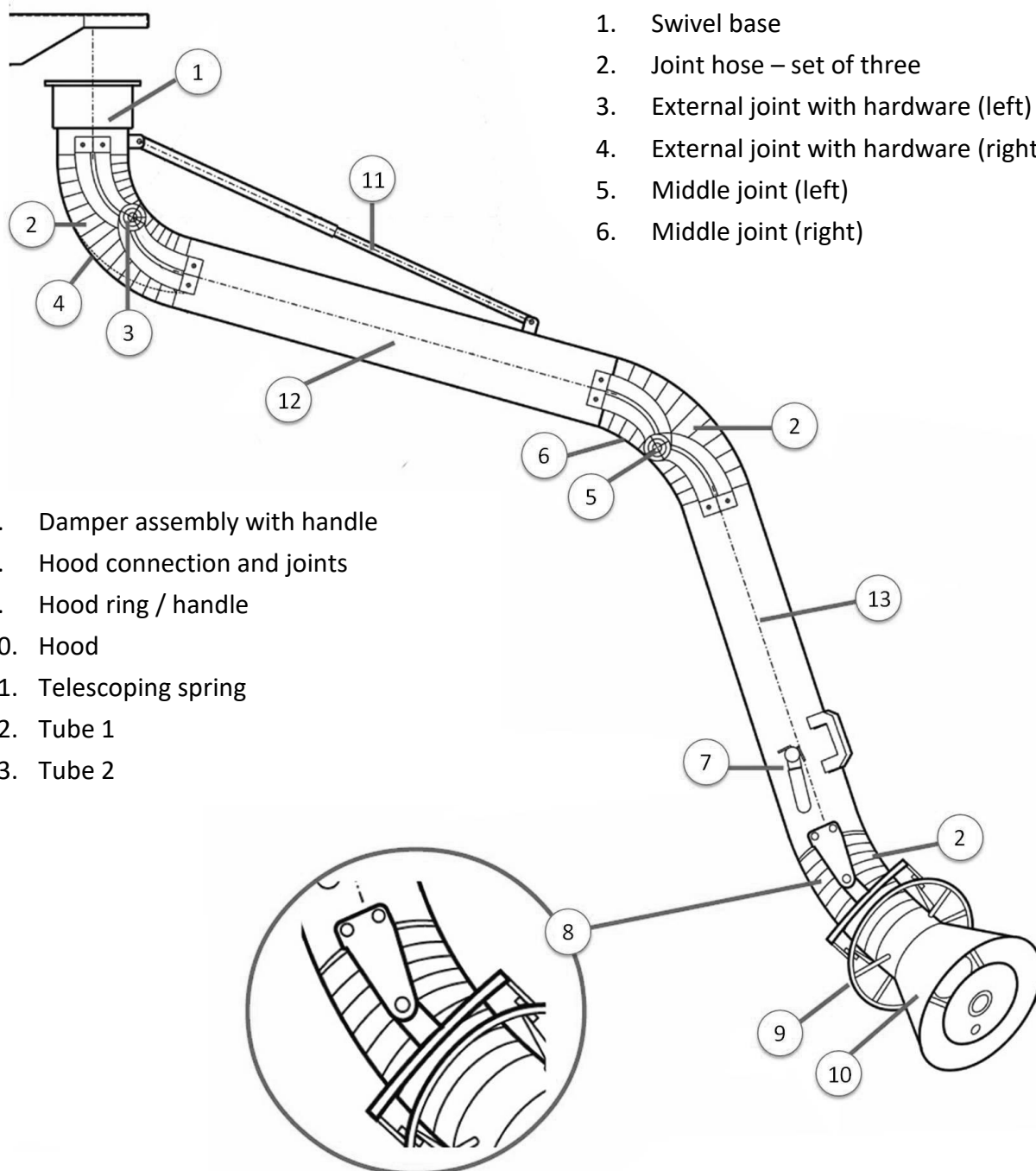
Apply a medium duty grease to grease fitting on side of swivel base. Continue to grease at regular intervals to ensure free movement of arm. See photo below:



Please read and save these instructions. Read carefully before attempting to assemble, install, operate or maintain the product described. The continual observance of these procedures will help increase your production and extend the life of the equipment.

FUME DOG HANGING FUME ARM

Parts List



Please read and save these instructions. Read carefully before attempting to assemble, install, operate or maintain the product described. The continual observance of these procedures will help increase your production and extend the life of the equipment.

FUME DOG HANGING FUME ARM

Contact Information

Fume Dog is a proud product of 321 Teknik.

7 Superior Dr SE, Rome, GA 30161

Ph: 1-800-980-3481

Email: sales@fumedog.com

Website: www.fumedog.com