



Autentico[®]
LUXURY PAINTS



What is hard-wax oil? How do we make it and how to apply?

Grandiose hardwax oil is a solvent-free top of the range mix of vegetable oil and natural waxes. It delivers outstanding protection on worktops, kitchen- and bathroom cupboards and many other surfaces that need a subtle and translucent finish. In this article, we explain which ingredients we use and how we make Grandiose.

Ingredients.

Grandiose hard-wax consists of 3 main ingredients:

- Tung oil, the queen of vegetable oil
- Carnuba wax, the queen of natural wax
- “pepper and salt”





Autentico®

LUXURY PAINTS

Tung Oil

Tung oil is called the queen of natural oils. Tung oil is extracted from the seeds of the Tung tree. These seeds look like giant chestnuts.

Tung oil is a drying oil, just like linseed oil, sunflower oil, walnut oil and so on.

Tradition has it was Parco Polo who introduced Tung Oil to the Western Countries, although its use was limited until the 19th century.

In the 19th century, however, Tung oil was “discovered” by paint and varnish manufacturers as a very valuable ingredient for their products, and nowadays, the quality of a product is determined by the percentage of Tung oil present in that product.



Seeds of the Tung Tree

Tung oil is now preferred by many to linseed oil because it dries faster than linseed oil, is stronger and does not darken over time.

Because the Tung tree is very sensitive to frost, it is only successfully cultivated in China and South America, so the supply of Tung oil is limited.

Pure Tung oil is water-resistant, penetrates well, is elastic and does not normally tear. Tung oil offers a quick, solid layer, protects the wood very well and gives a transparent, matt finish. Raw Tung oil smells slightly of nuts, is light yellow in colour and contains no thinners or drying agents.



Autentico[®]
LUXURY PAINTS

Carnauba wax

Carnauba wax is extracted from the leaves of the carnauba palm (*Copernicia prunifera*). This palm is native to northeast Brazil and protects its leaves from drying out with a layer of this wax.

It is known as the queen of waxes because Carnauba wax is the highest quality wax that Mother Nature makes for us. The wax is obtained from the leaves by crushing them, refining the wax and then bleaching it.

Carnauba wax is indigestible to humans and animals and is excreted unchanged, which is why it is used on many foods as a glossing agent or as protection. Carnauba wax is registered as E903.

Due to the high melting point of Carnauba wax (78-85 °C), it has also been used for years in lipstick.

Carnauba wax is the hardest wax that Mother Nature makes. The story goes that in pure form, it is as hard as concrete. This is an urban legend, but it does indicate that it is one of the hardest waxes known.



Carnauba wax flakes





Autentico®

LUXURY PAINTS

OK, and how do we make it?

The high-quality Tung oil, is pumped into a boiler of about 900 litres, after which the boiler is heated to about 200 degrees. During the heating, the temperature and the viscosity of the oil are carefully measured every 15 minutes.

Due to the rising temperature, the oil starts to react with the other ingredients, and the oxygen present in the air, as a result of which the oil mix obtains the desired properties and also thickens.

If the temperature rises above a specific limit, heat is developed as a result of that reaction, which in turn speeds up the response so that even more heat is produced. A temperature snowball, as a result of which the process can quickly become uncontrollable, resulting in fire or a completely hardened content of the boiler. This is one of the areas where excellent knowledge and experience are required.



Autentico hardwax production units

Cooking the oil to precisely the right temperature and thickness (viscosity) to obtain the desired properties is paramount, just as to but keep the process fully controllable.

During the process, the other necessary products, such as Carnauba wax and colourants, are added to the mixture at various temperatures to obtain the desired properties. Of course, this is done strictly according to a recipe developed in advance by our chemical specialists to ensure that all batches have the same properties and quality.

As soon as the desired properties are achieved, the oil is pumped from the boiler to cooling boilers to lower the temperature so that the exothermic process stops and the oil can be processed further.

At the end of this process, after adding a little “salt and pepper”, such as bio controllable viscosity agents, Grandiose is as good to go and ready to make it as a great translucent finish on wooden surfaces but it also goes well as a finish on Vintage chalk paint.





Autentico®

LUXURY PAINTS

How to apply?

Grandiose hardwax oil has a very low viscosity, meaning the use is very economical with a usage of only a whopping 30 m²/L.

You need to apply Grandiose (indoor) with a brush and let it set for only 5-10 minutes. Then wipe it off with a lint-free cloth (used cotton will do). During this process the oil will penetrate the surface while the wax forms microscopic small balls on the surface. This unique combination offers a strong protection and a subtle translucent finish.

For best protection and great colour depth, we recommended applying two coats. Please leave 8 hours between coats. 24 hours after the second coat, the surface is well protected but full curing takes approximately 7 days.

Just like linseed oil, Tungoil, and therefore Grandiose, is prone to self-combustion. Never leave a Grandiose cloth folded apart. Unfold it and/or let it sink in a bucket of water. This way you will not be surprised.



Grandiose translucent finish





Autentico®

LUXURY PAINTS



Bathroom finish in Grandiose, colour Creamy White

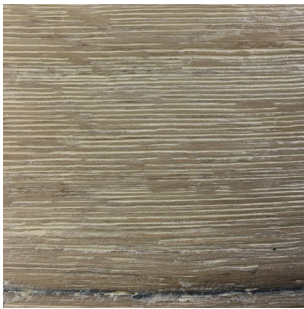




Autentico[®]
LUXURY PAINTS

Colours

We offer Grandiose hard-wax oil in 9 colours:



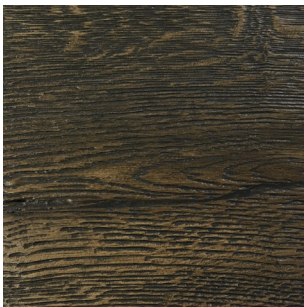
Creamy White



White



Natural



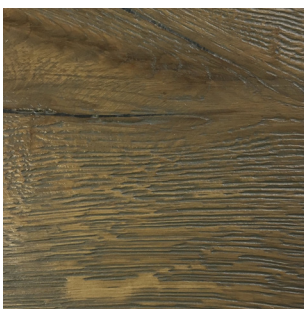
Clay



Soft White



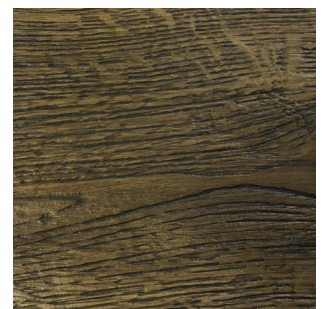
Light Grey



Smoke



Grey



Sand



The background of the page is a detailed black and white line drawing of a historical city, likely a European town. The drawing shows various buildings, including churches with spires, a castle with battlements, and a river or canal winding through the town. Labels in Latin are scattered throughout the scene, such as "Palatium papae" (Papal Palace) and "Locus sanctus" (Holy Place). The Autentico logo, a stylized 'A' with a leaf-like flourish, is positioned above the brand name "Autentico®" in a serif font. Below the brand name, the words "LUXURY PAINTS" are written in a clean, sans-serif, all-caps font.

Autentico®

LUXURY PAINTS

Pricing

Grandiose hard-wax oil is available in 500 ml @ € 32,95 and 1 L @ € 54,95.

That comes to only € 1,85 per m² per coat. Two coats are needed, which means a superb protection with high-quality natural ingredients for less than € 4,00 per square meter.

Grandiose is only suitable for indoor projects. Grandiose for exterior products is currently in development.

We hope this article was helpful and offered the clarification you needed. Should you need additional information or advice, please don't hesitate to contact us at support@autentico-paint.com