



AROUND the HOUSE

The Magazine for Ronald McDonald House of New York, Inc.

1978-2008



**SPECIAL
ANNIVERSARY
ISSUE**

HISTORY OF THE HOUSE
Part 1 of a 3-Part Series





AROUND the HOUSE

VOL. 3, ISSUE 1 / WINTER 2008

1 PRESIDENT'S LETTER

2 WHAT'S NEW AT YOUR HOUSE

A night with the New York Rangers, two new board members, Winston Prep lends a hand, Spotlight on Peter Samaha

4 SPOTLIGHT: LET IT SHINE

Ronald McDonald House of New York hosts World Children's Day global kick-off event.

5 SPOTLIGHT: HEART OF THE HOME

RMDH's volunteers enjoy a night of recognition.

6 FEATURE STORY: LIVING FREE

Thirteen years after gaining remission for leukemia, Jonathan Rodriguez is healthy, graduating from high school, and planning his future.

8 FEATURE STORY: OUR STORY: THE HOUSE

Part one of a special three-part series: The leadership of Vivian Harris and the generosity of McDonald's franchisees helped RMDH of New York become what it is today.

12 FUNDRAISING & EVENTS

New York Pops, Gala preview, Winged Foot Golf and *A Catered Affair*

14 OUR GENEROUS FRIENDS

25 BALANCE SHEET

26 SUPPORTING THE HOUSE

Your Ronald McDonald House has inaugurated a program to encourage you to remember us in your will.

THE RONALD MCDONALD HOUSE

provides temporary housing "a home away from home" for pediatric cancer patients and their families. The House provides families a supportive and caring environment which encourages and nurtures the development of child-to-child and parent-to-parent support systems. Ronald McDonald House in New York City is the largest facility of its type in the world.



PRESIDENT'S LETTER

Officers

Stanley B. Shopkorn
Chairman of the Board

Randel A. Falco
Vice Chairman

Vivian Harris
President Emeritus

William T. Sullivan
President & Chief Executive Officer

Peter L. Samaha
Vice President

Richard J. O'Reilly, M.D.
Vice President

George Simeone
Vice President

Shelly S. Friedman, Esq.
Secretary

Rick Richardson
Treasurer

Directors

John M. Angelo

Steven J. Bensinger

Milton Berlinski

Bruce D. Colley

Jerry de St. Paer

Harris Diamond

Barbara Eig

James E. Fitzgerald, Jr.

Casey Gard

Judy Gilbert

James A. Jacobson

Theodore P. Janulis

Sacha Lainovic

Kenneth G. Langone

Candace Leeds

Tina Lundgren

Rocco J. Maggiotto

Edward J. Malloy

James P. MacGilvray

George F. Mikes

Joel Newman

Frank Pellegrino

Aaron R. Rausen, M.D.

Michael E. Roemer

Clifford A. Sterling

Members at Large

R. Peter Altman M.D.

Michael J. DeSola

Michael A. Giunta

J. E. Reeves, Jr.

Michael Hegarty



Bill Sullivan, President

DEAR FRIENDS,

In a speech he once gave, Andrew Carnegie said, "Our duty of today is with today's problems." That's a thoughtful and interesting comment from a man who was deeply concerned about the future, well beyond his own lifetime. This is evidenced by the fact that he endowed the Carnegie Corporation of New York to work in perpetuity toward the advancement and diffusion of knowledge and understanding. Andrew Carnegie founded more than twenty institutions and organizations in the United States and abroad. Each one is dedicated to help realize his vision of a world in service to others and improving the public good, not just for a decade or two, but rather for as long as men and women are prepared to be responsible for contributing to the enlightenment and welfare of the generations after them.

At the Ronald McDonald House of New York, we too understand that our work must focus on solving the problems of today while meeting the challenges of tomorrow. Thirty short years ago, a small group of parents, physicians, local McDonald's restaurant owners/operators and community leaders, led by our then President, Vivian Harris, brought the dream of a Ronald McDonald House in New York City to reality. This dedicated group evolved into our first Board of Directors. These visionaries set a standard of performance that subsequent Boards have strived to live up to and exceed. They provided the faithful stewardship and generous support that made the Ronald McDonald House of New York, Inc. one of New York City's most admired charities.

The next four quarterly issues of "Around The House" will seek to engage you in the past thirty years of success, reminding us of our heritage through the best and most challenging of times. In today's issue, we recognize our generous financial donors of this past year and acknowledge them publicly for their ongoing support and friendship. Likewise, you will learn of our proper stewardship of our financials as you examine our 2007 balance sheet.

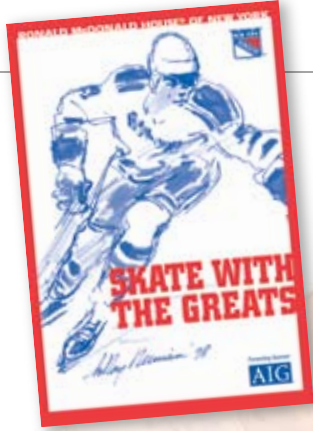
This issue will spotlight twenty-year Board Member, Peter Samaha, a McDonald's Owner/Operator who puts his heart and soul into our charity. Likewise you'll learn about the wonderful Jonathan Rodriguez family who stayed at our House and are now enjoying a cancer free life. In addition, you'll read about some of our spring fundraisers and different ways we plan to celebrate our thirty years of helping kids and families.

Finally, I would like to take the opportunity to wish everyone a Happy New Year and ask for your continued help and support as we forge ahead to make our thirtieth year our most memorable one yet!

Sincerely,

William T. Sullivan
President and Chief Executive Officer

WHAT'S NEW AT YOUR HOUSE?



SKATING TO GREAT SUCCESS AN UNFORGETTABLE NIGHT WITH THE NY RANGERS

MANY, MANY THANKS GO OUT TO ALL THE VOLUNTEERS, ORGANIZERS, AND GENEROUS ATTENDEES for a very successful *Skate with the Greats* event on January 23rd, 2008. Special thanks to *Good Day New York's* Mike Woods for serving as the event's Emcee, and to Steven Bensinger, Executive Vice President and CFO of AIG, for his superb leadership as Event Chair. RMDH would also like to thank Kerryann Tomlinson of the NY Rangers organization, and the following individuals from AIG: Jeff Lanning, Anastasia Kelly, Mike Roemer, Ned Cloonan, Danielle Healy, and Ayanna Phillip. In its fourteen years, *Skate with the Greats* has raised over \$6.5 million for Ronald McDonald House of New York, and this year's event broke all previous records with an incredible \$1.5 million in total donations. Gratitude must also be given to all the Rangers' former players for coming out and sharing laughs with the RMDH families and children. New York Ranger legend Brian Leetch was on hand to receive honors for his awesome years of effort on behalf of Ronald McDonald House, and for founding *Skate with the Greats* with Jerry de St. Paer and Rod Gilbert so many years ago. It was a very special night, and it couldn't have happened without so many dedicated individuals coming together on behalf of children in need. Thanks to everyone! *

WELCOME NEW BOARD MEMBERS! TINA LUNDGREN AND STEVEN BENSINGER JOIN THE RMDH TEAM

TINA LUNDGREN HAS SERVED ON THE BOARDS OF VARIOUS CHARITABLE ORGANIZATIONS focusing on either the arts or children's education and welfare. A professional writer specializing in business research texts and CEO autobiographies, Ms. Lundgren received her Masters of Business Administration from The Fisher College of Business at The Ohio State University in 1990. Also an international figure skating judge, Ms. Lundgren has officiated at championship-level competitions throughout the United States and Europe, and was recently appointed as the Judges Chair for U.S. Figure Skating, the sport's national governing body. She lives in New York City with her husband, Terry Lundgren, Chairman and CEO of Macy's, Inc.

STEVEN J. BENSINGER IS THE EXECUTIVE VICE PRESIDENT & CFO of AIG, one of the world's largest insurance firms. Prior to joining AIG, Bensinger was Executive Vice President and Chief Financial Officer of Combined Specialty Group, Inc., the insurance underwriting operations of Aon Corporation. He also serves as a Board Member for the New York University Alumni Association, 21st Century Insurance Group, and several other companies. For the past two years, Bensinger has served as Event Chair for one of Ronald McDonald House's most beloved and successful annual fundraising events, *Skate with the Greats*. *




WISH LIST

FROM BEDDING TO HOUSEHOLD CLEANERS, we need to replenish our cupboards. Through your generosity, we hope to fulfill the below requests. Please send new items to Arlene Mirabel's attention at the House. For an updated wish list and quantities needed, please go to http://www.rmdh.org/involved_5.html

- Blenders
- Toasters
- Electric can openers
- Coffee makers
- Kitchen utensil trays
- Kitchen utensil caddies
- Wind tunnel vacuums

405 East 73rd Street
New York, NY 10021
Tel: 212-639-0100

www.rmdh.org

 *New items only please.*

A SIMPLE DEAL

PETER SAMAHA'S COMPASSION HELPS CHILDREN IN NEED

TWENTY-YEAR BOARD MEMBER PETER SAMAHA STILL VIVIDLY REMEMBERS his first visit to Ronald McDonald House in the 1980s, back in the old House on East 86th Street. He was having a bad day, upset about something. He came into the House and started chatting with the families and kids, who, despite terminal diagnoses, were positive and upbeat and enjoying their time with Samaha.

"All I could think was, 'Holy mackerel,'" Samaha recalls. "I thought I was having a bad day? The attitude of these kids and families, I couldn't believe it." Samaha says the smiles and the hope of the Ronald McDonald House families forever changed his life. Two decades later he's one of the most dedicated and passionate supporters RMDH of New York has ever had.

Recently honored by the American Cancer Society for his decades of work on behalf of children in need, McDonald's Owner-Operator Samaha also serves on the Board of RMDH's umbrella organization, Ronald McDonald House Charities Global. His passion for charity and service is something he learned growing up; his father, Sam Samaha, is on the Board of the Ronald McDonald House Family Room at Westchester Medical Center.

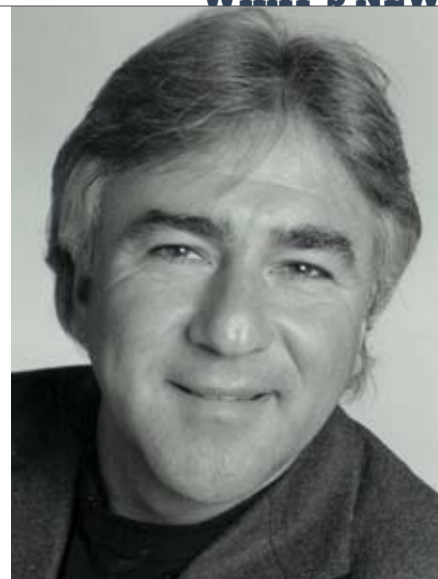
"I was raised to always give and don't ask for

anything in return," Samaha says. "Do favors and don't expect favors. It's a simple deal."

Indeed, that phrase "a simple deal," comes up again and again when Samaha speaks about his charity work. Since that first moment in the Ronald McDonald House long ago, the decision to dedicate most of his adult life to helping children in need was already made. From that point on, it was only a matter of how he could do the most good. He's found that opportunity through RMDH. Samaha knows that the commitment and effort of the RMDH Board is one of a kind.

"Our Board is such a great, strong Board," Samaha says. "I feel really proud to be with them. Everybody on this Board is a 'doer.' These people really work hard on behalf of the kids. They raise more money than anybody." In his time at the House, Samaha has come to believe that RMDH is making a real difference in the fight against pediatric cancer. Dr. Richard O'Reilly said on live TV a few years back, in an appearance with Samaha on behalf of the House, that Ronald McDonald House of New York is "part of the cure." The positive impact of the environment of RMDH is giving kids more hope, and doctors are improving treatment prognoses all the time.

"It's a simple deal," Samaha says, about the



SPOTLIGHT ON YOUR BOARD: PETER SAMAHA

need to throw all possible efforts and resources at fighting pediatric cancer. "There's nothing worse than losing a child or watching your child be sick. We've got to figure out how to beat it." *



WINSTON PREP LENDS A HAND

THE WINSTON PREPARATORY SCHOOL HELD A BAKE SALE on November 30th, 2007, with all proceeds benefiting the children at Ronald McDonald House of New York. Winston Prep is a school specifically designed for students with learning disabilities and, according to one of their teachers, Ms. Shalita, "many of the students have overcome significant obstacles in achieving their goals." Three students – Oliver, Ally, and Evan, wanted to do something to help children, and their teacher, Ms. Freeman, suggested Ronald McDonald House. Students baked all sorts of goodies with their parents at home, and sold the pastries at lunchtime, raising over \$300. Many thanks to the students of Winston Prep for working hard for our kids! *

HOUSE STAFF 212-639-0100

William T. Sullivan
President and
Chief Executive Officer
wsullivan@rmdh.org

Ralph W. Vogel
Director of Human
Resources,
Programs & Volunteers
rvogel@rmdh.org

Joseph Guidetti
Chief Financial Officer
jguidetti@rmdh.org

Winifred Cudjoe
Director of House Operations
wini@rmdh.org

Nelida Barreto
Program Director
nbarreto@rmdh.org

Richard H. Martin
Director of Development
rmartin@rmdh.org

Patrick Lenz
Director of Major Gifts
plenz@rmdh.org

Suzanna C. Houston
Assistant to the President
& Office Manager
shouston@rmdh.org

Helen Stafford
Volunteer Manager
hstafford@rmdh.org

Cherilyn Frei
Chaplain & Director
of Spiritual Care
cfrei@rmdh.org

Fordham Murdy
Program Manager
fmurdy@rmdh.org

Niki Sideris
Director, Greek Division
nikisideris@rmdh.org

Michael Ballew
Foundation Coordinator
mballew@rmdh.org

Bryan Patrick Miller
Editor
bpatrickmiller@gmail.com

Peter Noah
Designer
peternoah@gmail.com

Mel Farrell
Building Engineer
mfarrell@rmdh.org

PARTNER HOSPITALS

Bellevue Hospital
Beth Israel Hospital
Hospital for Joint Diseases
Hospital for Special Surgery
Manhattan Eye & Ear
Hospital
Memorial Sloan-Kettering
Cancer Center
Montefiore Hospital
Morgan Stanley
Children's Hospital

Mount Sinai Medical Center
NewYork-Presbyterian-
Cornell Medical Center
New York University Hospital
Rusk Institute
St. Vincent's Hospital
Roosevelt Hospital

LET IT SHINE

RONALD MCDONALD HOUSE OF NEW YORK HOSTS WORLD CHILDREN'S DAY GLOBAL KICK-OFF EVENT



AS CHILDREN, FAMILY AND STAFF LOOKED on, Ronald McDonald House of New York's quiet Macy's Living Room was transformed into a glittering stage. On November 20th, 2007, media personnel from across the globe gathered at our House for the global kick-off of World Children's Day. Multi-platinum recording artist Ne-Yo and Hollywood starlet Hayden Panetterie joined McDonald's Corporation leadership to commence the annual fundraising effort that comes to life at McDonald's restaurants in more than 100 countries worldwide.

"As we host World Children's Day across the globe, we think of the children and families who have been helped in times of real need," said Don Thompson, President,

McDonald's USA. "We are grateful to everyone who makes it possible to help children through Ronald McDonald House Charities and other worthy children's causes, and we hope many more will be inspired to offer support. That is what World Children's Day is all about."

Five everyday heroes from around the world were honored at the ceremony for their inspiring work on behalf of children in need. These first-ever McDonald's Give A Hand Awards were presented to Gabriela Lebenas from Argentina, the first RMHC volunteer in that country; Dr. Elvira Directo from the Philippines, an educator for the Department of Education; Robert Korzeniowski from Poland, an Olympic athlete and an RMHC

Poland Board Member; Barbara Nelms from Florida, a volunteer logging over 700 hours at her local Ronald McDonald House; and Jessie Rodriguez from Pennsylvania, a 16-year-old liver transplant survivor who now shares her story of hope to help others. As young Rodriguez received her award from idol Ne-Yo, her proud mother looked on with tears in her eyes.

In a highlight of the day's activities, Ne-Yo joined the young and gifted singers in the McDonald's Junior Gospel Choir for a moving rendition of "Let it Shine." Indeed, with all the efforts focused on helping children in need across the globe on this day, the light of charity might well have been visible from space. ✨



In a highlight of the day's activities, Ne-Yo joined the young and gifted singers in the McDonald's Junior Gospel Choir for a moving rendition of "Let it Shine."

HEART OF THE HOME

RMDH'S VOLUNTEERS ENJOY A NIGHT OF RECOGNITION

ON A SWANK NOVEMBER NIGHT of food and cocktails at Cipriani's on 23rd Street, HR Director Ralph Vogel and President Bill Sullivan loudly proclaimed what is gratefully acknowledged the rest of the year, too: Ronald McDonald House of New York is nothing without its 235 volunteers. The number alone is astounding, especially when one considers that half this number has volunteered at Ronald McDonald House for five years or more, and many of those for ten or even twenty years. To put it simply, RMDH of New York has one of the most impressive volunteer communities ever assembled by a non-profit organization.

The 29th Annual Volunteer Appreciation Dinner on November 28th, 2007, honored this community of men and women. Keynote speakers included Jim Murray, co-founder of the first ever Ronald McDonald House in Philadelphia in 1974. Murray shared his admiration and lifetime of experience witnessing the difference volunteers can make in the lives of children in need.

Day in and day out, our volunteers are the living, breathing mission of Ronald McDonald House, and one night a year can never be enough to convey our gratitude. Thank you, volunteers, for your open and compassionate hearts. ✿

Ronald McDonald House of New York is nothing without its 235 volunteers.



*** LEFT: Jonathan and Esther Rodriguez on an apple picking field trip with Ronald McDonald House in the early 1990s; RIGHT: Jonathan and Esther at their home in Pennsylvania in 2008.



THERE IS ONE REASON WHY THE RONALD MCDONALD HOUSE OF NEW YORK EXISTS: TO HELP CHILDREN FIGHT LIFE-THREATENING DISEASE. More specifically, the House exists for kids like Jonathan Rodriguez.

The power of children to overcome great odds and heal, and the hope of all of us, is symbolized in the story of Jonathan and his mother Esther. The Rodriguez family stayed at the Ronald McDonald House of New York for four years in the early 1990s as Jonathan battled childhood leukemia. Thirteen years later, he is still cancer-free, strong, healthy, and facing another major life event: graduating high school and starting college.

A senior at Reading High School in Pennsylvania, Jonathan likes science, participates in ROTC, and plays a lot of street basketball. He's looking at colleges around Pennsylvania, "in state," he says, "but a little bit away from here." In other words, he's right on track for a nineteen year-old. But Jonathan is not your average young man planning his future. The wisdom of his words belies his young age, and he's already lived through – and overcome – more adversity than most folks experience in a very long life.

"To me," Jonathan says, "it's nothing more than a trial. Just getting through it you learn a lot. If I would choose, I would do it again. If it wasn't for [the leukemia], I wouldn't be

the person I am now. It changes your whole perception of life. It has more value now."

When he was two years old, Jonathan was diagnosed with leukemia. A doctor at Mount Sinai Medical Center referred his mother Esther to RMDH of New York, where the family stayed for most of the next four years. The Rodriguez's lived both in the old House on East 86th Street – RMDH of New York's former residence – and the current House on 73rd.

Jonathan says that his memories of the years at Ronald McDonald House are happy ones. "They always had a way to entertain you, a sidetrack from the disease," he says.

Esther agrees. "They tried to entertain us and have fun instead of being locked in the hospital and crying," she says. "I bless them. I'm speechless for how to thank them."

Jonathan remembers a volunteer named Eddie, whom he says was "the coolest volunteer there," and always made him laugh. He remembers day trips organized by the House for him and the other kids: out in the Harbor on the police boat, and to Disney World through the Make-a-Wish Foundation. He also recalls the RMDH Playroom in the House on East 73rd as his second home. Whenever he wasn't up in the Rodriguez's room, he was down in the playroom hanging out. For him, it was exactly what the House hoped it would be: a place

to be entertained, a place to forget all the hospitals and treatments and just be a kid for a while.

"I'm so appreciative of the House and their efforts," Esther says. "Because they helped alleviate the pain I was suffering, and the stress. Regardless of all the drama and the chaos going on, they gave us a breather from the circumstances. The staff were absolutely overwhelmingly kind, they were really supportive."

At age six, Jonathan started remission and has been cancer-free ever since. For long years he suffered side effects from the treatments, dry eyes and skin problems from the x-rays and radiation. The disease profoundly weakened his immune system, and he subsequently endured nine bad bouts of pneumonia, the last one in 1998. Things have been a lot better the last several years, he says, and he barely ever catches even a cold anymore.

"That House really helps," Jonathan says, looking back on his years at RMDH. He knows that his experiences with leukemia and at the House have impacted the way he sees his own future. "Career-wise," he says, "I want to do something that not only would help me but something that would help other people too. I like to concentrate on other people in need." *

If it wasn't for [the leukemia], I wouldn't be the person I am now. It changes your whole perception of life.

OUR STORY: the HOUSE

The leadership of Vivian Harris and the generosity of McDonald's franchisees helped RMDH of New York become what it is today.

RONALD MCDONALD HOUSE, IS, FIRST AND FOREMOST, AN IDEA. It started with one sick little girl in Philadelphia and spread through her parents to her father's employers, to her doctors, to doctors she'd never met, to other people whose children were fighting pediatric cancer. The idea started in Philadelphia and spread quickly to other cities, and one of the earliest cities it reached was, inevitably, New York.

PART
1 The first installment of our three part series, "Our Story."



*** IN THE OLD HOUSE ON EAST 86TH Street there was a living room, a large kitchen with four stoves and one big dinner table where all the families ate together.



Once the idea arrived in New York, it did what so many great ideas have done upon reaching this historic city: it bloomed. The idea rooted deeply into the fabric of the City's philanthropic heart, moving and shining into Wall Street, the Construction trade, the Insurance industry, and of course the McDonald's owner-operators who have been so integral since the beginning. The idea of Ronald McDonald House in New York grew so large it needed a new home, and it needed new visionaries and supporters to help foster the new home into being. Please join us as we trace the spreading of this idea, like fire, like love, from one little girl's family in Philadelphia to East 73rd Street in Manhattan, the largest facility of its kind in the world.

the Eagles team rallied around Hill. After months of fundraising, Jim Murray presented Kim's hematologist, Dr. Lawrence Naiman, with a check for \$125,000. Doctor Naiman generously referred Murray to Dr. Audrey Evans, a pediatric oncologist at The Children's Hospital of Philadelphia since she had a greater need.

Dr. Evans was extremely grateful for the money for the new oncology wing, yet deep in her heart, she had another vision. She explained that like the Hills, most parents from the time of their child's diagnosis spent weeks camped out on hospital chairs and ate from hospital vending machines. In addition, many of these parents traveled great distances and were facing financial difficulty as a result of their child's illness and, thus, could not afford the cost of staying at a hotel. Yet the children needed their families nearby. Her dream was to provide housing near the hospital – a place that would welcome the entire family, from siblings to grandparents, and allow them to share their hopes and fears with other families experiencing similar situations.

Jim Murray then recruited the aid of local McDonald's Corporation representatives and restaurant owners, who raised funds through their St. Patrick's Day Green Milkshake promotion to purchase an old house located near the hospital. McDonald's had one request: could the

house be named after their favorite clown, Ronald McDonald?

Dr. Evans contacted another parent of a child battling cancer, John Canuso. Being in the home construction business, he and his family volunteered to organize a group of associated businesses to completely renovate and furnish the house. Close friend Joseph Tarquini donated his architectural services in the planning of the renovation. Within three months and spending about \$150,000 of their own money, the Canuso family and friends completed the final phase of this dream.

On October 15, 1974, the first Ronald McDonald House was officially opened. At last, this seven-bedroom home made it possible for families to be close to their hospitalized children, and stay in an environment that was a home-like atmosphere where everyday realities could be shared.

IT ALL BEGAN IN THE SPRING OF 1974. Kim Hill, the daughter of Philadelphia Eagles football player Fred Hill and his wife Fran, was being treated for leukemia at St. Christopher's Hospital For Children. Consumed with a desire to "do something," Hill approached his teammates to join in an effort to fight this horrendous disease. Under the leadership of owner, Leonard Tose, and General Manager, Jim Murray,

FOUR YEARS LATER, INSPIRED BY THE HOUSE IN PHILADELPHIA, a group of New York City McDonald's Owner-Operators joined the Children's Oncology Society of New York to start the Ronald McDonald House of New York. After a



year of fundraising and the recruitment of Vivian Harris, a celebrated local philanthropist, as its inaugural President and Board Chairman, the Ronald McDonald House of New York opened the doors of a twenty-four-room family-friendly facility on Manhattan's East 86th Street.

The New York House was the fourth Ronald McDonald House in the world, and quickly became an essential part of the City's pediatric hospital network. Past residents and long-time staff and volunteers describe the old house as "cozy" and "personal." In one of Harris' ingenious fundraising moves, a different designer designed each of the House's twenty-four rooms distinctively, all by donation. A former convent purchased from St. Joseph's Catholic Church next door, the old House was actually two neighboring brownstones remodeled into one connected residence. There was a living room, a small playroom, a large kitchen with four big stoves and one big dinner table where all the families used to eat together.

"It was like a community meal, every meal," says longtime volunteer Andrew Nawn of the old dining facilities.

Volunteers and parents used to cook one big meal for everyone in the House, and everyone sat down together to eat. "All the families really came together," Nawn says. "It kind of felt like the House you grew up in."

There were other quirks to the old House. Only six of the rooms had private bathrooms and the rest of the guests used

facilities in the main hallways. (One can imagine how coveted those bathroom suites must have been!) The initially redesigned living room was walled with mirrors, which, according to former Board Member and twenty-five year volunteer Mary Lambert, ended up not being such a good idea. "The kids were obviously going through radiation and chemotherapy treatment, and didn't need to be constantly reminded of their appearance." Lambert says the situation was quickly remedied, as artistic volunteers painted elaborate murals on the mirrors, turning a potentially awkward moment into a bright and charming distraction for the kids.

From all accounts the old house was "cozy" precisely because of its small quirks – the old basement that smelled like an old basement, the odd stairs connecting the two brownstones. "You knew where all the cobwebs were," says Nawn. "That's what made it comfortable."

As the years continued at East 86th Street, President Harris proved to be a tireless and passionate supporter of the RMDH cause. Her relentless and successful fundraising efforts continually improved the facility and the services the House was able to provide.

"Vivian had an amazing capacity to work with people on all levels," Nawn says. "She always knew the appropriate thing to say, who to go to, and where to go. She leaped over any budget hurdle. She is a tall and elegant woman; she was the Jackie Onassis of the House."

Harris came to RMDH after years

of involvement with the Boy Scouts, specifically working with disabled Scouts in public schools. She initially said "no" to Ronald McDonald House, because she didn't want to leave her work in the schools. Eventually, Harris agreed to come to Ronald McDonald House only to start it up, with plans to return to the Boy Scouts once the House was on its feet. In the end, Harris stayed with Ronald McDonald House of New York for twenty-seven years, holding the title of President for her entire tenure. "It's because of her that the House is what it is," says longtime volunteer Jeannie Riegel.



AFTER SEVERAL YEARS ON EAST 86TH STREET, it became clear that the size of the facility no longer met the demand. Staff member Sue Houston remembers turning away 30-40 families a week due to lack of space in the House. "It was devastating," she says. "We just didn't have room." It became Vivian Harris' dream to build a larger facility that could house all the families being turned away.

Board Member Pete Samaha recalls that the House's Board, the McDonald's Corporation, and local McDonald's franchisees decided to fund a study to assess the need in New York for a larger facility. They found it. Soon after, the capital campaign for the construction of a new, unprecedented \$24million facility on East 73rd Street was launched.



There simply would not be a Ronald McDonald House of New York without the generosity and dedication of the McDonald's Owner-Operators.

With tenacity and sheer belief, Vivian Harris and the House's Board raised \$12million from private donors and foundations.

"Vivian had the greatest knack for raising money," Samaha says. "She was very intelligent, very good with people, and she'd raise a million and a half a year just by talking to you."

Everybody chipped in, from the Yonkers Firemen to the House's own Greek Division, and of course the overwhelming support from the Construction, Wall Street, and Insurance industries.

The remaining \$12 million came, in a stunning display of support, from local New York McDonald's Owner-Operators. The role of the McDonald's franchisees cannot be underestimated; there simply would not be a Ronald McDonald House of New York without their generosity and dedication. One need only go on a tour of the East 73rd Street facility to know that it's all been worth it. Since the new House opened in 1990, over 10,000 families have called it home.

After nearly three decades of outstanding leadership of the House and its growth into a world-class facility, Vivian Harris passed the Presidential reins to William Sullivan, RMDH of New York's current President. Sullivan began his tenure with a swift and comprehensive renovation of the East 73rd Street facility.

"Vivian saw her goals met," Nawn says. "She started it out as a charitable endeavor, a magical place. Bill came in

and saw that the House could be more. He's brought a sense of urgency and accountability. We're very, very fortunate to have Bill Sullivan as the President of Ronald McDonald House."

As Bill Sullivan and the RMDH Board open a new dream for RMDH of New York, it's all the more apparent that the people who've served, lived at, and loved the Ronald McDonald House are what make it so special. The future beckons, and even more rigorous efforts in the fight against pediatric cancer must go along with it. As the House continues to grow, it's up to the people to continue filling it with warmth and light. To keep it "cozy" like that old pair of brownstones on East 86th Street. ✪

Please join us in the next issue for the second installment of our three part series entitled "Our Story." The next chapter, "The People," will explore the individuals, traditions, and programs that have brought the House to life, and filled it with laughter, love, and hope for over 30 years.



FUNDRAISING & EVENTS

APRIL
28

AN EVENING WITH THE NEW YORK POPS ORCHESTRA

CARNEGIE HALL HOSTS AN EXTRAORDINARY NIGHT



RMDH OF NEW YORK JOINS FORCES WITH THE NEW YORK POPS ORCHESTRA in April for a special evening of music at Carnegie Hall. Founded in 1983 by Skitch Henderson, The New York Pops is the largest independent symphonic pops orchestra in the United States, and the only symphonic orchestra in New York City specializing in popular American music. A publicly supported not-for-profit organization, The New York Pops performs free summer music concerts in New York City, and is heard worldwide through tours, recordings and television appearances. Please join us for a fun night of music and celebrities at one of the world's premier performance venues.

April 28, 2008, 5:30pm Cocktails & Hors D'oeuvres, 7:30pm Concert

For more information please check out our website: www.rmdh.org or contact Patrick Lenz, plenz@rmdh.org, 212.639.0600.

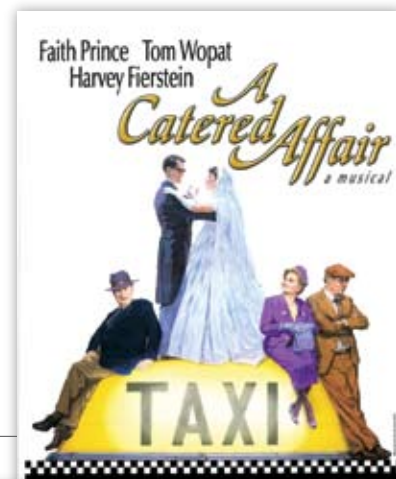
"A CATERED AFFAIR"

RONALD MCDONALD HOUSE OF NEW YORK'S SPECIAL THEATRE BENEFITS are always an exciting treat. This spring's "A Catered Affair" event proves to be a rare occasion indeed. Based on the motion picture written by Gore Vidal, this stunning Broadway musical features four-time Tony Award® winner Harvey Fierstein, Tony Award winner Faith Prince (*Guys and Dolls*), Tony Award nominee Tom Wopat (*Annie Get Your Gun*), Matt Cavenaugh (Broadway's *Grey Gardens*), Leslie Kritzer (Broadway's *Legally Blonde*), and Tony Award-winning director John Doyle (*Sweeney Todd, Company*). In the 1950s, Bronx family ties are strained when a couple decides to give their daughter the grand wedding they never had. This world premiere musical is funny, heartwarming and uplifting for audiences of all ages. Come join Ronald McDonald House kids and families for this extraordinary night on Broadway!

April 30th, 2008, 5:30pm Cocktails & Dinner, 8pm Performance, Walter Kerr Theatre

For more information please check out our website: www.rmdh.org or contact Tony Cardillo, acardiello@rmdh.org, 212.639.0192.

APRIL
30



SAVE the DATE

Mark your calendar with these upcoming RMDH Fundraising Events you won't want to miss.

Greek Division Walk-A-Thon

Date: Saturday, May 17, 2008

Location: Ronald McDonald House

Monday Night Football with the NY Giants

Date: Autumn 2008

"Billy Elliott"

Date: October 30, 2008

Time: 5:30 PM Cocktails & Dinner, 8:00 Theatre

Location: Dinner and Cocktails Marriott Marquis, Imperial Theatre

MAY

5

THIRD ANNUAL GOLF CLASSIC

THE GOLF CLASSIC AT WINGED FOOT GOLF CLUB is quickly becoming one of RMDH's most exciting and successful new annual events. Marsh Inc. returns as Title Sponsor of the tournament and RMDH of New York is currently seeking additional corporate sponsors for the festivities. Home of several past U.S. Open and U.S. Amateur tournaments, Winged Foot is ranked one of the top golf courses in the country. In addition to enjoying a round at one of the most beautiful landscapes around, guests can also look forward to lunch, dinner, cocktails, premium gift bags with name-brand gifts inside, as well as live and silent auctions, and a raffle. Don't miss this once-in-a-lifetime (or at least once-a-year) opportunity to knock your best drive onto a world-class fairway.

Monday, May 5th, 2008, Winged Foot Golf Club



For more information please check out our website: www.rmdh.org or contact the Special Events Coordinator, specialevents@rmdh.org, 212.639.0206.



MAY

19

16TH ANNUAL GALA AND 30TH ANNIVERSARY CELEBRATION

IT'S TIME TO DUST OFF YOUR BEST SUIT and join the stars of Wall Street and Corporate America for Ronald McDonald House's legendary Annual Gala. May 19th at the Waldorf Astoria, the 16th Annual Spring Gala is the cornerstone of our year and will raise in excess of \$3 million, a full one-third of RMDH's operating budget. Last year's Gala was an enchanted evening and a stunning financial success. The cocktail hour and gourmet meal were only outdone by the moving speeches of the honorees and the presence of our heroic RMDH kids. Please join us for an extraordinary evening of celebration of the most compassionate supporters in New York City – YOU! – and all that the House represents.

Monday, May 19th, 2008, 6:30pm, Waldorf Astoria



For more information please check out our website: www.rmdh.org or contact Richard Martin, rmartin@rmdh.org, 212.639.0206.



Kids Charity Fun Run

Date: Saturday, Early November 2008

Time: 1:00 PM

Location: Central Park, 7th Ave at 59th St Entrance, follow signs

2nd Annual Light A Light, Share A Night

Date: December 3, 2008

Time: 5:30 PM

Location: Lobby and Living Room of the Ronald McDonald House

Jingle Ball

Date: Mid December 2008

Time: 6:30 doors open, 7:30 Show

Location: Madison Square Garden

Greek Division Holiday Party

Date: December 8, 2008

Location: Ronald McDonald House

OUR GENEROUS FRIENDS

The Ronald McDonald House of New York City, Inc. gratefully wishes to acknowledge and thank our volunteers and community for their support in making our mission a reality. Although affiliated with a network of 271 Ronald McDonald Houses worldwide, each House is locally owned and operated by an independent, non-profit corporation and is entirely dependent upon donations for its success. We salute the following individuals, businesses, foundations and community groups who have lent their support in so many ways from January 1, 2007 through December 31, 2007. If we have erred or omitted anyone, we sincerely apologize and ask for your help in correcting our records by contacting Mike Ballew at 212.639.0209 or mballew@rmdh.org

\$100,000+

American International Group
Association of New York
Tri State-McDonald's
Owner/Operators
Judy & John Angelo
Jenna & Milton Berlinski
BlackRock Inc.
Business Traveler Magazine
Carnegie Corporation
of New York
Cuttone & Company Inc.
Deloitte & Touche USA LLP
Barbara & Norman Eig
Lori & Laurence Fink
Goldman, Sachs & Co
The Greek Division
Happy Faces Foundation
Sonia & Paul T. Jones
Rebecca & Sacha Lainovic
Elaine & Kenneth Langone
Lehman Brothers
Merrill Lynch & Co., Inc.
Morgan Stanley & Co.
Naddisy Foundation
The Network Group
Shopkorn Management
Tracy & Stanley Shopkorn
The Skirball Foundation
Weber Shandwick Worldwide

\$50,000 - 99,000

John Beckwith
Bloomberg, LP
Citigroup
Credit Suisse First Boston

Davies Family Foundation
Deutsche Bank
Ernst & Young LLP
Estate of Anthony F. Murray
Estate of Erika Geidenberger
Estate of Julia H. Witt
Fidelity Charitable Gift Fund
Freddie Mac Community
Relations
Melissa & Casey Gard
HSBC Securities (USA) Inc.
Anita & Michael Hegarty
JCF Services Co. LLC
Barbara & Theodore Janulis
The Komansky Foundation, Inc.
Local 628 Charities Fund
MBF Clearing Corp.
Janet & James MacGilvary
Marsh Inc.
Mizuho Corporate Bank
Michael Pedraja
New York Giants
New York Rangers
PNC Bank
PriceWaterhouseCoopers LLP
RBC Captial Markets
River Terrace Apts, LLC
Société Générale
Susan B. Stearns
Sullivan & Cromwell
Tishman Speyer Properties, LP
UBS Securities LLC
Wachovia Securities
Yonkers Fire Department

\$25,000 - 49,999

ABN AMRO
AOL LLC
BNP Paribas North
American, Inc.
Bank of America
Bank of New York Mellon
Bank of Tokyo - Mitsubishi
Bear Stearns & Co., Inc.
Shelly Block
Scott A. Bommer
Laurence P. Briody
Building & Construction Trades
Council of Greater New York
Calypso Capital
Management, L.P.
CB Richard Ellis
Charitable Lead Unit Trust
The Coca-Cola Company
Credit Suisse
Louis DeCaro
Department of Sanitation New
York City - Manhattan East 8
Karen & Jerry de St. Paer
Dewey & LeBoeuf LLP
Ann & Harris Diamond
Donald Drapkin
Fidelity Charitable Gift Fund
The Fiona & Stanley
Druckenmiller Fund
Fares Foundation
Farina & Associates
Amy Fleming
Kathy & Richard S. Fuld, Jr.
The Grano Family Foundation
Richard A. Grasso

Joseph M. Gregory
Guy Carpenter & Company Inc.
Steven D. Holzman
J.T. Magen & Company, Inc.
JP Morgan Securities, Inc.
Kerry & James Jacobson
Kelso & Company
Lori & Charles J. Levy
Marilyn & Edward Malloy
May and Samuel Rudin
Family Foundation
Mayer Brown LLP
Maynard, Cooper & Gale
McKinsey & Company, Inc.
Michael D. Melnick
Mercer Delta Consulting
Robert Michiels
Roberto and Allison Mignone
Millwright Woodworking
Moore Capital Management
Massey Knakal Realty
Services Inc.
Mutual of America
David A. Nadler, Oliver Wyman -
Delta Organization
& Leadership
New York Athletic Club
Michael Nierenberg
Nintendo World
RBS Greenwich Capital
Royal Bank of Scotland
Linda & Michael Roemer
Arthur J. Samberg
Jane Hartley & Ralph Schlosstein
Richard Schneider
Sheryl & Barry K. Schwartz

Scotia Capital
 Mr. Martin Sherlock
 Maria & George Simeone
 Simpson, Thatcher & Bartlett
 Skadden, Arps, Slate, Meagher
 & Flom
 Sol and Margaret Berger
 Foundation
 Spear, Leads & Kellogg
 Specialists, LLC
 Standard Chartered Bank
 Kristin & Clifford Sterling
 The Guy M. Stewart Cancer Fund
 Syde Hurdus Foundation, Inc.
 Valentine J. Taubner
 The Sandra Atlas Bass & Edythe
 & Sol Atlas Fund, Inc.
 Len & Fern Tessler
 Tishman Construction
 Corporation
 Paul Touradji
 Eli Zabar
 Zurich Financial Services

\$20,000 - 24,999

Build-A-Bear Workshop
 Foundation, Inc.
 DDB Worldwide
 Communications Group, Inc.
 Dallas BBQ
 Flood Catering, Inc.
 Lehr Construction
 Macy's Inc.
 Thomas F. Marano
 Marquis Jet
 Pfizer Inc.
 Raiff Foundation
 Rao's
 The Rubin-Henry Family
 Foundation

\$15,000 - 19,999

Coughlan Group Inc.
 Bo Dietl
 Estate of Morton Blick
 Bruce & Jodi Dimpflmaier
 The Coughlan Group, Inc.
 Finnigans Wake Pub
 & Restaurant
 Patricia Heggeman
 & Michael Coughlan
 Henry Nias Foundation, Inc.
 ING Group
 The James T. Lee Foundation, Inc.
 David Levy
 Liberty Mutual Insurance
 NYSE Group Inc.

New York Fire Department
 Engine 44
 New York Police Department
 19th Precinct
 New York Police Department
 20th Precinct
 The Harvey Silverman
 Foundation, Inc.
 Tony's DiNapoli, Inc.
 XL Insurance

\$10,000 - 14,999

After Midnight Oil Company
 American Funds
 Atlantic Hoisting and Scaffolding
 Banco Santander Central
 Hispano, S.A.
 The Bank of Tokyo-Mitsubishi
 UFJ, Ltd.
 Blackstone Group, Inc.
 Bloomingdale's
 Boston Provident, L.P.
 Bowne & Co., Inc.
 Benjamin S. Bram
 Geoffrey Brooks
 Nina & Art Calcagnini
 Chelsea Morrison Foundation
 Cisco Systems, Inc.
 Clifford Chance US LLP
 Jason Cohen
 Jeffrey Cohen
 Douglas Day
 Debevoise & Plimpton LLP
 Florence & Michael DeSola
 DeSola Group
 Dresdner Kleinwort
 Shelley Einhorn
 The Ergonomic Group
 Vincent & Lorraine Farina
 First American Title
 Insurance Co. of NY
 Fisher Brothers Foundation Inc.
 Friedman & Gotbaum, LLP
 Joseph D. Gahtan
 Gardiner & Theobald, Inc.
 Generosa Pope Foundation
 Tracy & Scott Gerber
 Hamilton Executions LLC
 Jane Heap & Greg Smith
 Bert Hefke
 Hitachi Data Systems
 Hugoton Foundation
 Instinet
 ITG Hoening
 Robert & Ann Karofsky
 Keith and Peggy Anderson
 Family Foundation

Kramer Levin Naftalis
 & Frankel LLP
 Orin S. Kramer
 Lacy Gibbs Newman JR TTEE /
 Amy Marie
 Leslie Lake
 Laurence W. Levine
 Foundation, Inc.
 Aaron Lenz
 Max Levine ITG/Hoenig
 Lindenmeyer Munroe
 Kathleen & Rocco Maggiotto
 Timothy Mahoney
 Martin Livingston
 Sir Deryck & Lady Maughan
 Joseph Malley
 James Manfredonia
 Mitchell P. McCullough
 Brian McGeough
 Memorial Sloan-Kettering
 Cancer Center
 Metroplex Harriman Corp.
 Elissa Meyers, Shelly
 & Nina Friedman
 George Mikes
 Milo Kleinberg Design
 Associates Inc.
 Monterey Fund, Inc.
 Myst
 The New York Pops
 Christopher & Leslie O'Gorman
 Peter Dartley Charitable Trust
 Pierpont Mechanical Corp.
 Plaza Construction Corporation
 Public Sector Campaign
 Charles E. Rappold
 The Raymond Debbane
 Family Foundation
 Red Apple Companies
 Robinson Lerer
 & Montgomery, LLC
 Howard Rubin
 Jack Rudin
 SEIU Healthcare 1199
 Massachusetts Division
 SMBC Global Foundation, Inc.
 Barbara Schaufeld
 Donna & Marvin Schwartz
 Mrs. Niki Sideris
 Gregory D. Smith
 Sonnenschein Nath
 & Rosenthal LLP
 The Starker Family Foundation
 State Street Foundation
 Kaufman C. Stillman
 William T. Sullivan
 Sybase Inc.

Leonard Tannenbaum
 TCF Equipment Finance, Inc.
 Tata Consultancy Services
 Michael Toback
 Tommy Hilfinger U.S.A Inc.
 Touradji Capital
 Management, LP
 Trio Asbestos Removal
 Corporation
 Trio General Contracting
 Associates
 Jay Twyman & Peeyush Misha
 US Trust Company
 WellPoint Inc.
 Wells Fargo Bank, NA
 Wells Fargo Century, Inc.
 Carol Welsh
 Mr. & Mrs. Kendrick R. Wilson
 Meryl & Chuck Wilmer

\$7,500 - 9,999

19th Precinct Club
 Gautam Chawla
 The Colley Group
 Eileen Fisher
 Daria L. Foster
 Globe Tax Services
 Incorporated
 Hearnuff Inc.
 Fred Lieblich
 The Luckow Family
 Foundation, Inc.
 Motion Picture Bookers Club
 NCB
 John W. Neary
 New York City Sports
 Commission
 New York Knicks
 Dan O'Connell
 Quigley's Limousine
 Service, Inc.
 Mike Smith
 Syosset Senior High School
 St. Stephens of Hungary
 Roman Catholic Church
 Temple Emanu-El
 Ladies Auxilliary
 Travelers

\$5,000 - 7,499

352 Restaurant Corp
 The Almira Family Foundation
 Aragon Construction
 Arnold Worldwide
 The Atlantic Group
 Bank of America United Way
 Campaign

Howard P. Berkowitz
 Bradford Renaissance
 Portraits Corp.
 Thomas Bruno
 Centerbridge Partners
 Classic Travel Services
 Clifford Chance US LLP
 Compass Moving and
 Storage, LLC
 Corporate Interiors
 Contracting, Inc.
 Edward J. Corral
 Coulter/Weeks Charitable
 Foundation
 Florence De Lavalette
 Barbara Deichman
 Dibella Corp.
 La Crosta
 Barbara Diechman
 Dave Diehl
 Distaff Advisors Inc.
 The William C. & Vivian M.
 Eiff Foundation
 Estate of Wilma Schwartz
 FedEx Corporation
 Fidelity Charitable Gift Fund
 Robert Michael Finne
 William B. Finneran
 Mr. Hugh Fox
 Hugh J. Freund
 John C. Furlong
 Mark Gallogly
 Judy & Rod Gilbert
 Bennett Golub
 J. Carney Hawks
 Helmar Foundation
 Hess Corporation
 David B. Higger
 Brian P. Hull
 Interpublic Group
 of Companies
 Jane M. Iwanowski
 Anita Kaufman
 Keller, O'Reilly & Watson,
 P.C.
 The King Street
 Charitable Trust
 The Knippenberg Foundation
 John Kovitch
 Lane Office Furniture, Inc.
 Candace Leeds
 David S. Lehmann
 Lehr Construction Corp.
 The Lucius N. Littauer
 Foundation, Inc.
 Litwin Foundation, Inc.
 John Luedke

Ralph Mack
 Bernard L. Madoff
 Manhattan Mechanical
 Contractors, Inc.
 Eli Manning
 Jeffrey Mayer
 McGraw-Hill Inc.
 Mediawhiz Holding, Inc.
 Mind Tree
 Monness, Crespi, Hardt
 & Co. Inc.
 Morgan Guaranty
 Trust Company
 Arlene & Jay Neveloff
 The New York Community Trust
 New York Sports Clubs
 Olstein & Associates, L.P.
 Outsource Consultants, Inc.
 The Dr. M. Lee Pearce Foundation
 Frank Pellegrino
 Robert A. Pellicone
 Amy M. Perella
 Leslie S. Perkins
 Richard R. Perna
 Plum Beach Foundation
 Michael Price
 Prudential Financial, Inc.
 Grace Reinhardt
 John Rohs
 Saint Dominic's Roman
 Catholic Church
 Peter Samaha
 Thomas and Kelly Sapio
 Peter Schneider
 Schottenfeld Group LLC
 Eric Schwartz
 Scott & Wilma Schwartz
 Theodore K. Shirley
 Smith Barney Charitable
 Trust, Inc.
 SMS Direct Inc. Postage Account
 Christopher Sobecki
 Audrey & Richard Stadin
 Anil C. Stevens
 Howard B. Teig
 Tom Juda & Nancy Juda
 Foundation
 Towers Perrin
 Tara Turk
 John Twyman
 UBS Securities LLC
 UniCredit Group
 Vanguard Charitable
 Endowment Program
 Meredith Vieira
 W.R. Berkley Corporation
 Charitable Foundation

Weil, Gotshal & Manges LLP
 Woodland Foundation

\$2,500 - 4,999

Michael Abrams
 AFD Contract Furniture, Inc.
 After-School Art, Inc.
 David Alcaro
 August General Construction
 James Auliffe
 Lawrence S. Bader
 Bams II Auto Boby
 Bank of America Matching
 Gift Foundation
 Bargold Storage Systems, LLC
 Ricardo M. Barragan
 Steven J. Bensinger
 Salvatore Bianco
 Christopher Blake
 Blaylock & Partners, L.P.
 Anthony Branchinelli
 Edna L. Breecker
 Laurence Briody
 Richard Brown
 Mark Burton
 Business Technology Partners
 Calling All Pets
 Car Program, LLC
 Franklin J. Carmel
 Casa Luca Foundation Inc.
 Central Park Boat House
 Erin R. Cohen
 Common Cents New York, Inc.
 Christine & Nicholas Cortese
 Cross Management
 DA Silvano Corp.
 Delta Air Lines, Inc. -
 Chris Switzer
 Deutsche Bank Americas
 Foundation
 Cornelius T. Dorans
 Drum Associates, Inc.
 John Ehrhardt
 Empire Office Equipment, Inc.
 Euraupair International, Inc.
 Exxon Mobil Foundation
 Peter Ferriso
 Christopher Foskett
 Frank & Roslyn
 Grobman Foundation
 John Frankel
 Freeman & Co., LLC
 Gerson Lehrman Group
 Frank Gifford
 Lynn Hamlin
 Judith Hannan
 Helmsley Spear, Inc.
 Henry Repeating Arms Co.
 Hercules Corp.
 Craig Horowitz
 Suzanna C. Houston
 Diana H. Imhof
 Interior Move Consultants, Inc.
 Jane M. Iwanowski
 J.B. Custom Masonry
 & Concrete
 Jacqueline S. Harris Foundation
 Denise Jeffries
 John P. Contracting Corp.
 JustGive.Org
 The Katzenberger Foundation
 Peter R. & Cynthia K.
 Kellogg Foundation
 Jim Kenny
 Kings Park Slope, Inc.
 Brad Krist
 Lake Capital LLC
 Lightolier
 Leon Lowenstein
 Thomas M. Luddy
 Andrew J. Malik
 Marcie & Me & Co.
 Marriott International, Inc.
 Marsicano Foundation
 Richard H. Martin
 Mattel Children's Foundation
 John J. McKenna
 Memorial Sloan-Kettering
 Cancer Center
 Mary Mescher
 George Mikes
 Stephen Milman
 Milrose Consultants Inc
 Miura Global
 Management LLC
 William A. Monness
 Morgan Stanley Annual
 Appeal Program
 MSD Capital, L.P.
 William F. Murdy
 Neptune Mechanical Inc.
 Joel Newman
 New York Police Department
 Housing Bureau
 Palian Inc.
 Gabrielle R. Palitz
 Pennisi, Daniels & Norelli, LLP
 Pinnacle Electric
 Princeton Information
 Quentin J. Kennedy Foundation
 Quik Park
 RCG Information
 Technology, Inc.

Kevin Ray
 Benjamin J. Renshaw
 Angelo Restaino
 Mike Rosen
 William Roza
 Daniel L. Sachs
 Kenneth Savio
 Saxony Carpet
 Service Directions Inc.
 Signature Printing, Inc.
 Scott Silverman
 Jeffrey S. Sloan
 Mark D. Sonnino
 Edward Sorkin
 Starbucks Corporation
 Spencer Stuart
 Marianne Spillane
 Chris and Sean Spina
 Structure Tone, Inc.
 The Robertson Foundation
 TPG Planning & Design, LLC
 Turner Construction Company
 Uneeda Enterprises
 United States Information
 Systems, Inc.
 VVA, LLC
 WB Wood NY
 Weintraub Family
 Foundation, Inc.
 Westpac Institutional Bank
 Westwood Cinema Corp
 Eric and Jan Woglom

\$1,000 - 2,499

AAA Farm Corp.
 Said Abdelkader
 Lynda Abdo
 Henry E. Adams
 James Adams
 Adforce America Inc.
 Joshua Alpert
 Alps Management Inc.
 Eric and Annette Altmann
 Filomena and Henry Andre
 Angel on a Leash
 Lorraine Antonello
 Aramark Tower
 Josh Astrof
 Robert Bach Foundation
 Arthur S. Bahr
 Baker Boots LLP
 Bank of America, Private Bank
 Bernice (Bunny) Barb
 Barbara and Gerald Essig
 Charitable Fund

Michael Barr
 Chandler Bates
 Mary H. Bauer
 Benhar Office Interiors
 Benjamin Shapiro Realty LLC
 Norman S. Benzaquen
 S. Bernstein
 Kathy Bierman
 Frank Bisignano
 Mace Blickman
 Edith C. Blum Foundation, Inc.
 Bollinger Inc.
 Jennifer Boone
 Brian Boyle
 Brand Source
 John K. Braniff
 Bread Market Cafe
 Mitchell Bredefeld
 Peter M. Brunell
 Donald C. Burke
 Mildred Buydos
 Monsignor Harry J. Byrne
 CA, Inc.
 Caiola Family Foundation
 Louise A. Cangialosi
 Robert Capaldi
 Michael Carlin
 Edward Cashman
 Cauldwell-Wingate
 Company, LLC
 Bryan Cave
 Cement & Concrete Workers
 District Council
 Centennial Elevator
 Industries, Inc.
 Century Elevator
 Maintenance Corp.
 Frank Cerisano
 Champion Parking Corp.
 CIT Group Inc (CIT)
 Citron Bros. Plumbing
 & Heating
 Jerome and Linda J. Clair
 Marks L. Cluster
 Clermont Specialty Managers
 Colavita USA LLC
 Colleran, O'Hara & Mills
 Paul Colley
 Joan Collyer
 Community Foundation
 of New Jersey
 Niall J. Conroy
 Brooke Constable
 Gavin Cook
 John Cook
 Toby Cooperman

Coty Operations
 Dawnelle M. Davis
 Richard Davis
 Michelle J. DeLong
 Delta Capital
 Management, LLC
 William S. Demchak
 Kirill Denisin
 Deutsche Bank AG
 DNA Contracting
 & Waterproofing LLC
 John F. Donahue
 Donald J. Fager & Associates
 Pamela Dorman
 Vincent Dowling
 Joseph Dugan
 Robert A. Dunn
 Dwight-Englewood School
 David A. Dworsky
 DZ Bank
 Efficient Combustion
 & Cooling Corp.
 Emmet, Marvin & Martin, LLP
 Entertainment Industry
 Foundation
 ePromos Promotional
 Products, Inc.
 Estate of Esther B. Goldsmith
 Excel Auto Repair, Inc.
 Stephen M. Fenton
 Fidelity Investments
 Michael Fien
 Finne Building
 & Investment Inc.
 Hope Fischer
 Fischer Travel Enterprises
 William Fischer
 James Flanagan
 Fleetwood Lock
 & Alarm Co., Inc.
 Freeman Health System
 The Lawrence & Anne
 Frisman Foundation
 Fulvio & Associates, LLP
 Henry Gabbay
 John Gaffney
 Margaret Galvin
 Charles Garner
 James T. Garvey
 Fred Gasior
 Annette Geddes
 General Electric Company
 Caroline V. Gerry
 Lucille Gladstone
 Cathy Glaser
 Seth Glickenhau
 Russell E. Glickstern

Global Industries, Inc.
 Nora K. Goldette
 Joshua L. Goldman
 Paul Goodman
 John Gorman
 Barbara F. Gottesman
 Jane M. Gould
 Greater New York Mutual
 Insurance Company
 Roberta Greenberg
 Group 2112, LLC
 Gunlocke
 Harold Schwartz Company Inc.
 Dana Hart
 Haworth
 Lonnie Haymes-Schwartz
 Paul K. Herzan
 John Hicks
 Drew D. Hoffman
 Priscilla H. Hoffman
 Stern Hoffman
 Alan and Courtney Howard
 Linda Huett
 Hughes Hubbard & Reed
 Hullin Metz & Co. LLC
 IAT Reinsurance Co. Ltd.
 IBM Corporation
 Jeff Ingraham
 Interface FLOR
 International Union
 of Operating Engineers
 Int'l Assoc. of Bridge Structural
 & Ornamental Iron Works
 ISK Manhattan, Inc.
 Isseks Bros, Inc.
 Laura Jacobi
 Gregory W. Jacobs
 Diron Jebejian
 Michael Jeffries
 Jerusha Partners, LLC
 Jewish Communal Fund
 John Gallin & Sons Inc.
 John I. McHugh
 Foundation Inc.
 William R. Johnston
 Ralph E. Jones
 Jan Josephs
 Patrick Joyce
 Joseph Kahl
 Martin L. Keating
 Susan & Jay Keller & Family
 John Kelly
 John J. Kelly
 Kendra M. Kenny
 Eleanor Kerr
 Jay Kinder

Peter A. Kindler	Maria Messina	Plumbers Local Union #1	Harold Shapiro
Lynn and Tom King	MetLife	Leonard S. Polaner	Shaw Contract Group
Timonty M. Kingston	Metropolis Abstract Corp	Ann Poll	Thomas J. Shea
Stuart Koenig	Julie and Lance P. Meyerowich	Stuart Press	Nancy L. Shenker
Karl & Francine Kohl	Microsoft	Property Resources Corp.	Steven R. Siegel
Richard Kostyra	Midhattan Woodworking Corp	Prosthodontic and Implant Associates	Edward T. Smith
Gary Kravetz	Vincent P. Migliore	Prudential Foundation Matching Gifts	James Smith
Padmanabha Krishnan	Mildred Mironov	William D. Queally	Michael Smith
Joseph R. Krist	Rayra Montz	Henry M. Quincannon, Jr.	Ellen Smoller
K-S Discount Mart Inc. Peter Sechiano	Mariann Morales	Quinn and Feiner Service Company	Giovanna M. Solimeo
L & K Partners, Inc.	Guido Mosca	Gerald H. Ranzal	Alfred G. Souza
Andrew Lacey	MRC II Contracting, Inc.	Aaron R. Rausen M.D.	Kenneth M. Spence
Peter Lamm	Catherine Nathan	Kevin R. Ray	Spillane Parkside Corp.
William Lane	Nathaniel de Rothschild	Recovery Racing III LLC	Spitball Collectibles LLC
Evelyn Langbert	National Interiors Inc.	J.E. Reeves, Jr.	Stamford Tickets
John J. Lauto	National Reprographics, Inc.	Regional Appraisal Assoc. Inc.	Anne E. Stabile
Lee Stahl & Toby Stahl-Maranga Charitable Foundation	Andrew Nawn	Related Cos.	Staci Chemical, Inc.
John Lehman	Marty Nealon and Richard Allen	Remco Maintenance LLC	Richard Steinberg
Betty G. Leitner	Neil G Shastri Charitable Corp.	RFF & Associates Inc.	Bonnie Stern
David Lester	The Neisloss Family Foundation, Inc.	RGIS Inventory Specialists	Martin Stoll
Neil Levine	Network for Good	Rita & Henry Kaplan Foundation	Daniel E. Stoller
Laurie Levinson	New York City Transit Authority	Tom Rivoir	Stone Source, LLC
Bruce Levy	New York Commercial Bank	Robert Hollweg Grantor Charitable Lead	Strachan & Vivian Donnelley Foundation
Brenda S. Lewis	New York Life Foundation	Robert W. Johnson IV Charitable Trust	Margo Stricker
Clifford H. Lewisohn	New York State AFL-CIO	Linda G. Robinson	Supreme Wines
Lilker Associates Consulting Engineers	Robert W. Newman	Beatrice and Michael Romita	John Sweeney
E. Linderman	June Newmark	Ropes & Gray Fiduciary Account	Theresa Sweeney
Linea Architects, P.C.	Newmark Knight Frank	Scott Rosenbaum	Leslie Szivos
Kurt Locher	Byron Nicas	Amit Rosenblat	TAP Connected to the Community Giving
Lois Systems Inc	NOB Hill Capital Management, Inc.	Rotary Foundation of New York	Joseph Taranto
Andrew D. Loughrane	Robert G. Notine	Ellen D. Roth	Mark A. Taylor
Chris S. Lugert	Stephen Novis	Marc Rovner	Dave Teig
Winston Maasbach	Patricia and Otto F. Obermaier	Andrew S. Rowen	The Alexander Fischbein Foundation
Mac Foundation	Denis O'Connor	John B. Ryan	The Barry Friedberg and Charlotte Moss
The James A. MacDonald Foundation	Maureen M. O'Leary	Anna Sakalis	The Central National-Gottesman Foundation
Mack-Cali Realty Corporation	Edwin Olsen	Eugene Sala	The David P. & Tracey L. Gerber Family
John Mambrino	Olsen Living Trust	John Samuelson	The Fred Stein Family Foundation
Riccardo Mancuso	Omni Construction Corporation	Henry Schachar	The Journal News
Frederick Kane Marek	Oppenheimer & Co.	Michael Schaftel	The Manhattan Resident Managers Foundation
Marks Paneth & Shron LLP	Larry Oshin	Schnellbacher-Sendon Group, LLC	Thelen Reid Brown Raysman & Steiner
Tony Martignetti	P.E. Stone, Inc.	Jeffrey and Cari Schnipper	Tuchman, Korngold, Weiss, Lippman & Gelles LLP
Martin Greenfield Clothiers	Susan M. Paolercio	Theresa L. Schoenfeld	David Tufts
Frank Martorana	Andrew S. Parets	Schultheis & Panettieri	Elizabeth Tyndale
Mason Tenders District Council	Park Avenue Charitable Fund	Ethan Schwartz	United Way of New York City
McDonald's Owner Operators	Williams C. Patterson	Craig Sedmak	United Way Special Distribution Account
McDonald's USA LLC	Pearlgreen Corporation	The Segal Company (Eastern States), Inc.	Valencia Perez & Echeveste
John F. McGillicuddy	Sheldon Perl	Vicki Seppell	Joseph Valesio
Brendan G. McGovern	Perry Cohen Carpentry Corp.		
Christopher M. Meeks	John M. Philo		
Mark A. Mehl	Phoenix Beverages		
Merck Partnership for Giving	Michael Pickett		
Matthew V. Merola	Pillar Data Systems		
	Carole Pittelman		

John Van Name
 Conrad and Daniel Velasco
 Velocity Consulting Inc.
 Amy and Jeff Verschleiser
 John Visco
 Karel Wahrsager
 Kevin Waldron
 Warrior Hockey Club, Inc.
 Hank Wasiak
 Carole Wasser
 Jill Webb
 Robert Weinman
 Mark Weinstein
 Michael A. Weisburger
 Lauren G. Weisenfeld
 Westpac Institutional Bank
 WestPoint Home
 Peter A. Wiener
 Wintergreen Advisers, LLC
 Wolf-Gordon Inc.
 Kurt J. Wolfgruber
 Adam Wolfson
 Workwell Partners
 Rebecca Young
 Joe Zicherman

\$500 - 999

57 Palisade Avenue, Corp
 A To Z Perfection
 Maintenance Corp.
 A-1 International Courier
 Services, Inc.
 Ernest Abrahamson
 Acme Architectural Products, Inc.
 David R. Adler
 Aetna Giving Campaign
 Allan & Reda R. Riley Foundation
 for Charitable Giving
 Allstate Restoration
 Corp. Contractors
 Mark E. Almeida
 Almstead Tree & Shrub Care
 Co., LLC
 R. Peter Altman, M.D.
 Amalgamated Transit Union
 Div. No. 726
 American Express Global
 Volunteer Action
 Fund Program
 Dave Andreotta
 Anghec Inc.
 Ann Pinkerton Trust
 Carol B. Annacone
 Aon Foundation
 Approved Oil Co.
 of Brooklyn, Inc.

Ariel Capital Management,
 LLC
 Daniel Aronson
 Astoria Federal Savings
 Ava Restuarant Corp.
 Averick Foundation, Inc.
 B & B Furniture Group
 Incorporated
 Lillian Babtakis
 Franz Bacon
 Joseph Bailey
 Pamela Banker
 Myra Barcan
 Andrew Bardolf
 Patrizia Barone
 Barbara T. Bartlett
 Bay Ridge Contracting Ltd.
 Janie Bender
 David and Gail Bensol
 Shelley Bergman
 William F. Berliner
 William Bershad
 Mitchell Bloomberg
 Blue Woods
 Management Group
 Leonard B. Boehner
 Linda Bohan
 Boilermakers & BlackSmiths
 Local 169
 Jo Etta Bokser
 James F. Bolger
 Joseph Bonacci
 Terrence Boyle
 Dennis Brandenberg
 Roxanne Brandt
 William Brennan
 Margaret Brenner
 Broadway.com
 Brooklyn Carpet
 Exchange, Inc.
 Andrew Brown
 Robert Buehler
 Robert W. Burger
 Donna J. Burniston
 Patrick Burns
 Hope Byer
 C & I Mechanial
 Maintenance Corp.
 Gerald Caffrey
 Karen M. Calby
 Scott P. Callahan
 Robert Camilleri
 Jef Campion
 Joseph P. Candella
 Capin & Associates Inc.
 Caruso Painting
 and Decorating Corp.

Peter J. Caruso
 Robert B. Catell
 CCN Designs Inc.
 Kathleen Chagnon
 Irving R. Charitable
 Foundation
 Leslie Cheatham
 Checker Glass Corp.
 Michael Ching
 Chutemaster/3M
 Cine Magnetics, Inc.
 Citigroup Foundation
 Matching Gift
 Citysites Commercial
 Group LLC
 Coffee Distributing Corp.
 Cohen Specialists, LLC
 David Condo
 Consolidated Technologies, Inc.
 Continuum Dynamics, Inc.
 Cordover Family Foundation
 James E. Costello
 Fay D. Couyoumjan
 Ruth L. Cove
 Creative Funding Goup, LLC
 Crest Office Products, Inc.
 Critical Security
 Intelligence, LLC
 James Cronin
 Cyber M@rketing Services,
 LLC
 D.P. Consulting Corp
 Cynthia Dabrowski
 Dahill Moving & Storage
 Arthur D'Angelo
 Michael Daniel
 Christin Daugherty
 Nancy Davies
 Dell
 Sandra DeMaria
 Designtex
 Pascal Desroches
 Deutsch Charitable Foundation
 Patricia Deweger
 Jonathan J. Diamond
 John Dibari
 Robert DiClemente
 Teresa Dilorenzo
 District Council New York City
 William D. Doherty
 Dom Miano / 57 Palisave Corp.
 John Aaron Duddy
 Anita Dumbergs
 Durable Finishing
 East River Liquors
 Alan J. Eisenman

Valerie Elias
 Eltech Industries, Inc.
 Emirates
 Enright Marble & Tile Corp.
 Enterprise Association
 of Steamfitters
 Entertainment Unlimited
 by Ted Fass
 Lori Eshoo
 Lior Evan
 Morton Eydenberg
 Facilities Management Partners
 David Farbstein
 Vincent Farina
 Charles J. Fausner
 Arthur Faverio
 Debra Fechter
 Matthew Feeney
 Matthew Fenster
 Brett Fialkoff
 Andreas Fienbork
 Financial Security
 Assurance, Inc.
 Fine Design Interiors
 Arnold Fishman
 Five G's Family Foundation
 Robert S. Fleischer
 Pamela Flockhart
 Food Industry Cooperative
 of New York
 Jeanne Forster
 Roger Fradin
 Luca Fresiello
 Shirley Fried
 Barbara Friedman
 Harriet Friedman
 Sheila M. Fuller
 Michael P. Galgano
 Blake Gall
 Gallagher Gosseen Faller
 & Crowley
 Garden of Dreams
 Alan D. Garfield
 Elizabeth C. Garn
 Connie Garrido
 Emanuel E. Geduld
 George Breslaw & Sons, Inc.
 Renee F. Getler
 Gary Gettenberg
 Christopher Gibbs
 Giving Express Program
 Glenn Partition Inc.
 Sandra P. Gluck
 Jessica Goadec
 Cindy Golden
 Jay Goldman

Joseph Golusinski
 Donald Gordon
 Rosalyn Gordon
 Steve Gordon
 Edward Gorman
 Gould Investors
 Gray Family Foundation, Inc.
 Edward C. Greenberg
 John R. Grey
 Kenneth A. Griffin
 Timothy C. Grogan
 Suzanne Grundfest
 Leo Guthart
 Peter Guyett
 GVA Williams
 Patricia Halloran
 Hands On Muscial School
 Gregory Hanley
 Kathleen Hanrahan
 Herbert A. Hardt
 Lillian S. Hardy
 Todd Hardy
 Barbara M. Harley
 Haworth, Inc.
 J. Heffernan
 Shauna N. Herdemian
 Nicola M. Heryet
 Hicksville Sweet Shop
 Highbuilt Contracting
 Babette S. Hollister
 Howard A. Silverstein
 Foundation
 Ralph Howard
 Hudson Valley National
 Foundation - Ferrara
 Family Fund
 Imperial Parking Systems Inc.
 International Association
 of Heat & Frost Insulators
 & Asbestos Removal
 International Brotherhood
 of Teamsters
 International Union
 of Operating Engineers
 Anita Iodice
 Joseph Ippolito
 J.B. Hanauer & Co.
 J.P. Morgan Chase
 & Company
 Jay and Anne Jablonski
 Jacobowitz Chesed Fund
 Robin James
 Janklow Foundation
 JAS Performance, Inc.
 JC Trading & Management,
 LLC

Jewish Communal Fund
 of New York
 JKB Services, Inc.
 John Chiodi, Empire City
 Consultants, Inc.
 John Moran, CPA
 Eartha & Stanley Johnson
 Jones Apparel Group, Inc.
 Dorothy P. Jordan
 Jordon Cooper & Associates
 Alan H. Joseph
 Robert Josephberg, M.D.
 Kaehler Moore
 Architects, LLC
 Peggy Kahn
 Andrew D. Kaizer
 Michelle Monet Katz
 Patti Katz
 David Katzen
 Sy Kaye
 Joyce A. Keller
 John J. Kennedy
 Karen Lee Kennedy
 Samuel Ketive
 Kevin Davis Insurance Services
 Richard Kleinman
 Judy Kloner
 Edgar R. Koerner
 Esther Koven
 Hank Lane
 Langdon Ford Financial
 Charitable Giving Plan
 David Langlois
 Andrew Z. Lapsley
 Walter L. Larkin
 Lautman, Maska, Neill
 & Company
 M. Leboworth
 John Leib
 Lawrence Leuzzi
 Martin Levine
 Scott Levine
 Marjorie Riche Lewis
 Richard Lieb
 Lawrence and Joyce Light
 Lighting By Gregory Inc.
 Stephen J. Lis
 Little Star Foundation
 Steven Littman
 Local Concrete Supply
 & Equipment Corp.
 Lance Lonergan
 Priscilla R. Lovejoy
 Walter J. Luby
 Frank Macinnis
 Margaret Mager

Hans Maier
 William Maloney
 Maloof, Lebowitz, Connahan
 & Oleske, P.C.
 Richard Mandel
 Joyce Maranto
 Gladys Martin
 Martin Walshin, Inc.
 Caroline Masco
 Mass Marketing Group, LLC
 The Max & Rose Katz
 Foundation, Inc.
 Mark Mayers
 Susan McAdam
 Kerri McDonald
 Michael McInerney
 Stephen & Anita McKenna
 Colleen M. McPhail
 Jeffrey F. Meltzer
 Clara and Gianni Mercuri
 Patricia Merrill
 Perry Mesmer
 Metro Fuel Oil Corp
 Metro Mechanical, Inc.
 Tom and Christy Meyer
 Michael Baratta / Corbott Intl Inc
 Michael Laub Co. LLC
 Liz Miller
 Steven A. Mills
 Milrose Consultants
 David and Lucy Mimran
 Christopher Monaco
 Monteath Moulding Corp.
 Mary B. Moore
 Morstar Corp.
 Marsha Morton
 Moses and Aaron Foundation
 Stephen Moss
 Thomas Murphy
 Hunter Murtaugh
 Natixis
 Edward and Lianne Navedo
 Cindy E. Nelson
 Carmen O. Neu
 New England Brokerage Corp.
 New York Boiler, Inc.
 New York Life Insurance
 Co., Inc.
 New York State Iron Workers
 District Council
 New-Bay Corp
 NHL Foundation
 Noah's Ark Nursery School
 Charles Noll
 Harold S. Novikoff
 NYCCLC Special Events

Michael T. Obalde
 John O'Brien
 Marie O'Brien
 Frank A. Occhigrossi
 Robert Oechslin
 Michael D. O'Halleran
 Angel Olmeta
 Omega E. MS Brokerage Inc.
 Opinion Access Corp.
 William Oppenheim
 Opticom Solutions Inc.
 Brian & Kimberly Orcutt
 Thomas O'Regan
 Sybil Oster
 Barry R. Ostrager
 P.S. Marcato Elevator Co., Inc.
 James Palmisano
 PartyShack / Balloon Options
 Mary Paul
 Delores Pauley
 Robert Peck
 David Peltz
 Penn Plaza Brokerage, Ltd.
 Peter Pennoyer
 Peter Sechiono K-S Discount
 PFC Title Insurance
 Agency, LTD.
 Eric Philo
 Pilato Bros. Plumbing
 & Heating Co, Inc.
 Pillinger Miller Tarallo, LLP
 Edward Pincover
 Shea Pinson
 Joseph Polizzotto
 Preferred Healthmate
 Premier Woodcraft, Ltd.
 ProDesign, Inc.
 Sherry M. Puchochi
 Bob Quinn
 Irving R. Raber
 Rand Engineering
 & Architecture, PC
 Stephen Ravosa
 RCL Agencies, Inc.
 Red Apple Group
 Paul Regolizio
 Reiken Construction
 Management, Inc.
 Ellen Reinheimer
 Maxine Reiss
 Renaissance Charitable Foundation
 Ira Resnick
 Carl E. Ring
 James B. Ritchey
 Susan Rizzo Vincent

Robert & Gail Edelstein
Foundation
Fleurette Roberts
The Malvin & Greta Roesch
Foundation
Martin S. Roher
Gary Rosen
Geraldine Rosen
Seth Rosen
Rudolph Rosenbaum
Sam Rosenberg
Leonard and Suzanne Rosenfeld
Anne Ross
Judy Roth
Leslie S. Rotkel
Rubenstein Associates, Inc.
Regina M. Rubenstein
Margaret Russell
Elia Russo
Gregory Russo
S & W Painting, Inc.
Anna Sakalis
Sandy Littman, Inc.
Joelle Santaniello
Peter Savignano
Mary Sayers
Regina Scamporino
Elliot Scher
Elliot and Lisa Scher
Schoen Trimming
& Cord Co. Inc.
Daniel Schonfeld
Chip Schorr
Linda K. Schupper
Harvey Schussler
Max & Gail Schwartz
Robert Schweizer
SCK Sound Design, Inc.
Secureshred LLC
Mitchell Selip
Richard Shane
Sheldon Shane
Cynthia Shapiro
James Sharkness
Sheraton Hotels
David Sherman
Sierra Consulting Group
Ruth Silberg
Silverstein Properties, Inc.
William E. Simon
Julius and Dianne J. Simper
Denise E. Solomon
John Spicer
Don M. Spielvogel
Christopher Squassi
Helen Stafford

Stan Deutsch Associates, Inc.
State Industrial Products
Barbara Steiner
Guy Struve
Stupell Foundation
Stuyvesant Fuel Service Corp.
Superior Acoustics, Inc.
Superior Office Systems
Karen Sywolski
Robert Sywolski
Takirika Corp.
Cynthia Talbot
Frank J. Tanki
TD Bank Financial Group
Techne & Associates, Inc.
Furqan Tejani
The Edmond N. & Virginia H.
Moriarty Charitable
Foundation
The Famous Kosher Nosh
The Greater Cincinnati
Foundation
The Kandell Fund
The Malkin Fund, Inc.
The Mohawk Group
Theatre Party Associates, Inc.
Rolf Thrane
Tiffany and Company
Tompete Food Corp.
TPS of So. Florida Inc.
Trade Wind Mechanical, LLC
Ivana Trump
Steven Tugentman
Tygabox Systems, Inc.
James Ulrich
Uniformed Sanitationmen's
Association
United Brotherhood of Carpenters
and Joiners of America
V.P. Builders, Inc.
Gertrude Van Name
Russell Vardell
Craig M. Varrelman
Venture Realty
Verizon Foundation Matching
Victor Herbert Foundation
Mark A. Visceglia
Judith Vogel
Christian A. Von Hassell
Gail Wallach
William Waters
Jeffrey L. Webb
Ayelet Weiner
Mark B. Weisburger
Gregory Wierzbowski
Bruce Wigley

Williamson, Pickett, Gross, Inc.
Bessie Wilson
Richard Wood
WRA Properties, Inc.
Joseph L. Yasgur
Lee Zaretsky
Michael A. Zauderer
Orren Zipper

\$250 - 499

169 White Plains Restaurant, Inc.
A & L Sales, Inc.
Abbey Electric, Inc.
Rosina Abramson
Gregory Adams
Harry Adjmi
Andrew Adler
Affiliated Adjustment
Group, Ltd.
Albert N. Bonanno,
D.D.S., P.C.
American Association
of Orthopaedic Surgery
American Sugar Refining, Inc.
Ameriprise
Karl J. Amidon
Javier Andrades
Staci Ansbach
Art Solutions
Steven M. Atlas
AXA Foundation
B. David Kane Agency, Inc.
Arthur Bach
Jeffrey Bacidore
Edward R. Baier
Veronica Baker
Stephen Barker
Maryann Barone
Mitchell Barr Berman
R. M. Barth
Barylski Land Surveyor, PC
Dianne W. Batten
Philip Baum
Susan Bazaar
Dianne E. Beach
George Becker
Patricia Begley
Janet M. Belden
Belvedere High School Choirs
David Berg
Alberto Bergeret
Henry M. Bergtraum
Edie Berke
Henrietta Berko
Madaleine Berley

Ellin Berman
Murray Berman
Ian Bernstein
Kenneth J. Bernstein
Robin Bernstein
Timothy Bethuy
Teresa Betz
Clare Beyer
Arden Bialek
Grace E. Bileta
BKA Enterprises LLC
Lewis Black
Linda Blum
Hilda Boas
Bruce and Diane Bobbins
Peter Bolland
Robert Bolling
Joseph Borrelli
Anthony Bove
Patricia H. Brady
Michael Brandsdorfer
Marcy M. Braselton
Braverman & Associates, P.C.
Shirley Breerton
Bernadette Brida
Bromar Enterprises Corp.
Thomas G. Brown & Family
Stephen and Linda Brown Fund
Melissa Brown
George L. Buchman
Jeffrey M. Buda
Rosemary K. Burke
James J. Burns
Betsy Busovsky
Ivonne M. Cabrera
Patrick Caldon
Elena Caliman
Robert Calinoff
Jane L. Campbell
Louis Canpuzano
Mary Capaldi
Raymond Carreau
Carriage Construction Corp.
Cascione, Purcigliotti
& Galluzzi, P.C.
Stephen Casey
Beatrice C. Cassidy
Jim Cavanaugh
Robert Ceisler
Anita Cela
Danielle Cella
Cement & Concrete
Workers Union, Local
Chemical Bank
Kwok-Ming Cheng

- | | | | |
|---|--------------------------------------|--|---|
| Chilmark Foundation, Inc. | Eastchester OB-Gyn, PC | David Gagliardotto | Herbert Hebel |
| Sam Cimaglia | East Manhattan Vicariate | Susan Gardner | Vivian Hedges |
| City Transport Management Inc. | Andrew Edelstein | Richard Geller | Felicia R. Hendrix |
| Stuart Clarke | Eden Environmental, Inc. | Genesee Region Home Care | William Henry |
| Adam & Gloria Clemens | Joan N. Edwards | Deborah Gentile | Alan D. Herman |
| Coffee Grinder, Inc. | Stephen M. Edwards | Gilda's Club | Linda A. Hersh |
| Natan Cohen | EFPE Environmental | Lorraine Gill | Geraldine C. Herskowitz |
| Rochelle Cohen | Harriet M. Einhorn | A Gilmartin | Martin Hertz |
| Sarah Cohn | Alfred Ekberg | Barbara Giordano | Marty Hertz |
| Elizabeth Coll | Elliot Elzweig | Girl Scout Monmouth
County Troop 1486 | Philip M. Heyman |
| Desiderio A. Collado | Emerald Guild Society | Laurie Goldberg | Heyman Wolf Foundation |
| Carol Collins | John & Barbara Emmert | Paul Goldberger | HF&C Insurance |
| Common Cents New York, Inc. | Nancy Engdahl | David Goldenberg | Jim Hicks |
| Renee Conforte | Christopher Engel | Dana J. Golding | Holborn Corporation |
| Sean M. Connelly | Christine Engeleit | Carol Goldman | Frank Holzmann |
| Joseph Cordano | Elizabeth M. Engle | Glenn and Michelle Goldstein | Doug and Maddy Horn |
| Corliant, Inc. | Gerald Ennella | Howard Goldstein | Jean A. Horton |
| Sal Costantino | Epiphany Community
Nursery School | Linda Goldstein | HSBC Bank USA,
National Association |
| Joann Crupi | Avi Epstein | Sandra Goldstein | Hudson Valley Burritos
LLC DBA Tomatillo |
| Hugh & Maddy Cunningham | Equinox Fitness | Alex Gordon | John Hung |
| Edera Curcio | Catherine Errico | Andrew J. Gordon | Gene Hurst |
| Janice Cuttingham | Douglas Esposit | Michael Gordon | Ellen Hweider |
| Susan Dacks | Frank Esposito | Robert I. Gosseen | I Buss Uniform Company |
| Arthur Daly | Dave H. Evans | Steven Gould | Mark R. Imowitz |
| Patricia Danner | F&F Supply | Gilbert J. Grant | John Imperatore |
| Morton Davidman | Michael R. Faber | Nicholas J. Grasso, Jr. | J B Electric Corp. |
| Bethany Davis | Douglas Fenniman | Greater N.Y. Electric, Inc. | Patricia Jack |
| Michael Davis | Thomas A. Fenniman | Tara Greeley | Arnold Jacobs |
| Nicholas De Palma | Bruce Ferland | Danielle Greenberg | Stephen Jacobs |
| Toni Del Vecchio | Anne Ferrara | Edward Greenberg | Amy Jacobson |
| Carol DeMaio | Christine Ferriola | Marc S. Greenberg | JAD Corporation of America |
| Nicholas J. Demarco | Feuerring Foundation | Mark M. Greenblatt | David James |
| Matthew S. DeSalvo | Fidelity Investments | John C. Griffith | Andrew Janczak |
| Steven G. Desanctis | Gary Fiebert | Michael Grossfeld | Carla Jennings |
| Edward DeSantis | Susan W. Finlay | Susan Grunfest | Jeffrey Jewett |
| Ronald Desouza | William Fischer | Frank Guazzo | JJL Realty Corp. of New York |
| Elsa Devita | Andre Fisher | Joseph Guidetti and Robb Perry | George Johansen |
| Carmine Di Battista | Linda W. Fisher | Ram P. Gupta | Johnson & Johnson |
| Michael L. Di Napoli | Pamela Fishman | Robert Gutman | Clyde Johnson |
| Eric Diamond | Gerald Flaster | Thomas P. Gybel | Jonathan Judd |
| Edward Dickson | Charles Fleming | Barry Haberman | Kagan Lubic Lepper Lewis Gold
& Colbert, LLP |
| Joann Digulla | Craig Flynn | Jack Habert | Kenneth M. Kahn |
| Lauren Dilieto | John Flynn | Phyllis Nordeen Hahn | Phil Kahn |
| Marilyn P. Dinklemeyer | Samuel Foley | Mary Hamilton | Rajesh Kalra |
| Direct Management Corporation | Jane Foote | Richard Hanlon | Sol Kaplowitz |
| Marie A. DiRocco | Stephen Forman | John Harmon | R. E. Karplus |
| Alfred Discipio | Alfred M. Frank | Robert H. Harrison | Bette Kasanof |
| Henry Dizenhaus | Jeffrey J. Frankel | Edward J. Hart | Jill Kasoff |
| James Dobson | Todd Freebern | Robert L. Harteveltd | Sofia Katzap |
| Eric Domin | Bert Freidus | Lowell Harwood | Maureen B. Keating |
| Isabel B. Drzewiecki | Charles Fried | Margaret A. Hauck | Kendall Carter Revocable
2004 Trust |
| Dunkin Donuts Sec Boston Post
Road Corp. Diane M. Durray | Ann Friedman | Constance Havrilla | Geoffrey D. Kimball |
| Florence Durso | Ellen Friedman | Albert Hayes | |
| Eagle Ocean Transport Inc. | Louis & Patricia Friedman | Lawrence Haynes | |

- Donald G. King
 Donis King
 John Kingsley
 William L. Kirchner
 Shirley Klein
 David J. Kmetz
 William Knoop
 Barbara D. Knox
 Cynthia F. Korkuch
 Steven Kosann
 Virginia M. Kotoucek
 Sally Krause
 Catherine Krohg
 Lauren Kubernat
 Edward P. Kujawa
 Peter Kuzma
 La Crosta Pizza
 Robert E. LaBlanc
 Andy Lachman
 Arnold Lakind
 Helen Lally
 Eric Lam
 Ellen Lamarca
 Evan S. Lamberg
 Joseph Langley
 Daniel R. Lascano
 Jessica A. Lawrence
 Erwin Lear
 Learning For Life, GNYC
 Leardon Boiler Works, Inc.
 Richard Leibner
 Anthony Lendez
 William Lenich
 Arthur M. Levine
 Martin Levine
 Jonathan Levy
 Rita Levy
 Susan Levy
 Lewis Cosmetic & Family
 Dentistry, PLLC
 Jeffrey Liddle
 Howard Andrea Lieb
 Wen Ling
 Susan Link
 Steven Lipka
 John D. Lipscomb
 Roy A. Lipson
 Andrea Lipstein
 Diane Lisacek
 Lockton
 Bruce S. Loeb
 Ronald D. Loffredo
 Langdon Ford Financial
 Lucidity Awards
 & Signage Corp.
- Catherine M. Ludzik
 Lukemia & Lymphoma
 Society of NYC
 Yelena Lukin
 Arthur Lusardi
 Lynch & Associates, PLC
 Patrick J. Lynch
 Lynn & Cahill LLP
 M P Agency Inc.
 Emy & Rich Macar
 Andrew MacDonald
 Betty L. MacDonald
 Rose M. Magliano
 James D. Mahan
 Sanny Makki
 Amir J. Malin
 John and Marina E. Mancuso
 Michael J. Mandel
 Peter Maniscalco
 Michael Marcellino
 Kenneth Marks
 Mar-Ro Operating Corp.
 Judith Martinez
 Margaret Martino
 Michael A. Martzahl
 Harry Masi
 Robert Masi
 Julien Mason
 Massapequa Funeral
 Home, Inc.
 Richard Mazzei
 Immacolata Mazzone
 Christopher McKinley
 Thomas McAdam
 James McBurney
 Paul McDermott
 Dennis M. McGarry
 Sharon McGee
 Harry McKasson
 David McKenzie
 Arthur McMahan
 David C. McVey
 Lise Meckauer
 Medford Animal Hospital
 Michael Mendelsohn
 Joseph Merante
 Metropolitan Associates
 ORLP Partners
 Marie Meyer
 Michael King Inc.
 Middleberg Communications LLC
 Midland Elevator Co. Inc.
 Midtown Preservation, P.C.
 Janet Miedema
 Phillip Milazzo
 Bella Miller
- Nicole Miller
 Miller Place Union Free
 School District
 Seth L. Miller
 Brent B. Milner
 William Miner
 Lawrence P. Miniter
 Lydia Mistretta
 Ken and Adina Moadel, MD
 Mary Molloy
 Margaret Moloney
 Monmouth Rehab Professionals
 Matthew J. Moran
 Donald P. Moriarty
 Jeffrey D. Moskowitz
 Ricky S. Munter
 Harry Munzing
 Kenneth M. Murphy
 Mary Ann Murphy
 Thomas and Maryann
 M. Murphy, Jr.
 Louis J. Mustacchio
 Donna Musto
 Joseph W. Myles
 Charlotte Nad
 Cardyn Nagler
 Nathan Properties, Inc.
 Paul J. Neale
 Brendan Neary
 Robert Nelson
 New Rochelle Tennis Courts
 Kristina Newman
 Ronald Nicolato
 Elaine Nigro
 Ronald D. Noll
 Ruth Norek
 Kathryn R. Norton
 Nova Builder
 & Developers, LLC
 Stuart Novick
 Molly O'Brien
 Carol O'Connell
 Daniel M. O'Connell
 Joseph O'Connor
 Raymond V. O'Connor
 Laura Odell
 Office & Professional
 Employees
 Oppenheimer Funds, Inc.
 Leolin Orefice
 Gerald Orlinick
 Robert M. Oropall
 Dean Paccioretti
 Barbara Pacifico
 Armand R. Palazzi
 John J. Palmato
- Panaghia of Island Park
 Arthur L. Panebianco
 PanWy Foundation, Inc.
 Edward J. Parker
 John Pascucci
 Patchen-Bernabei, Inc.
 Patchen's New Rochelle Inc.
 Pathen Holding Inc.
 Alan Pearlberg
 Dorothy Peart
 Maximo Peralta
 Claudio Perfetto
 Paul Peritz
 Ed Petrosky
 Joseph A. Pfaff
 Pfeil & Holing, Inc.
 David Phillips
 Phillips Nizer LLP
 Richard D. Piazza
 Stephen Picerno
 Sharon Pikus
 Karen Pinzolo
 Carl S. Place
 Ase B. Popovic
 Post Resources Group Ltd
 Gary Posternack
 Michael Potack
 Prisma Construction Inc.
 Queens Postal Federal
 Credit Union
 Rafe
 Willilam Rainey
 Henry Ramallo
 Donald S. Ramesdorfer
 James Raymond
 Raymond Opticians of Yonkers
 Real Property Associates
 Management Co.
 Anne & Randel Rechten
 Recycling Consultants
 and Management Services
 Red White & Bubbly LLC
 Bret Reilly
 Marc Reiner
 Harold Reiss & Family
 Richard W. Reiter
 Robert C. Remhild
 Nicole A. Renaud
 Marguerite M. Ricciardone
 Robert Rice
 Mindy Richenstein
 Riverside Medical
 Group PLLC
 RoadRunner Appraisal
 Services Inc.
 John Rock

Courtney Rodman
 Carlos A. Rodriguez
 Eileen Rogers
 Carlo G. Romairone
 Joseph Rorro
 Marc Rosa
 William W. Rosenau
 Judith Rosenberger
 David Rosenbluth
 Jayne Sacks Rosenhaus
 Paul Rothman
 Stanley L. Rothman
 John S. Rothschild
 Andrea Rothstein
 Richard J. Rudden
 Peter N. Rudy
 Joseph G. Rumpolo
 Terry Russo
 Paul L. Sadagursky
 Ehab Salama
 Patricia G. Salisbury
 Salomon & Appleman, Ltd.
 Karinn Sammann
 John Samuelson
 Gloria M. Santos
 Ann Savage
 Ann Schaefer
 Lauren Schatz
 Anthony Schiano
 Schiff, Epstein CPAs PC
 Robin & Arrien Schiltkamp
 Gary & Karen Schlesinger
 and Yablon
 Jeffery Schor
 Brian and Lori Schreiber
 Faith Schreier
 Martha Schuck
 Eric Schultz
 Marianne Schumacher
 Richard J. Schure
 David O. Schwartz
 Frank Scott
 Rosemary T. Scrima
 Jason Searle
 Donald Seeley
 Phyllis Seidenfrael
 Barbara Seixas
 The Maryam and Hervey
 Seley Foundation
 Service Employees
 International Union
 Ellen Shain
 Harold S. Shapero
 Barry Shapiro
 Gary Shapiro
 Phillip Shapiro

Stephen Shapiro
 Virginia Shaw
 John Shea
 Paul Sheahen
 Caroline Shechter
 Martin Sherlock
 Bernard Sherman
 Michael Sherman
 Barbara Sherr
 Jane Shiff
 Dave Sholtis
 Gilda and Ralph Sica
 Marc Siegel
 Sikoras Church Supply
 Bruce Silver
 Randall M. Silverman
 Edward Simon
 Singer Holding Corp.
 Frank P. Siragusa
 Carolyn Skiffington
 Stanley Skorupski
 Stephen Skrenta
 Maurice Slater
 Veronica C. Slater
 Slavet & Altman LLP
 Ellen K. Smalls
 Louise Sonet
 Arnold Sonnenblick
 Steven Sorahan
 Mary J. Soriano
 Jose Soto
 Veronica A. Soukup
 Mary K. Spengler
 Brian Stagnitti
 Joseph and Linda Stano
 Stanley Stevinson
 Grace L. Stockdale
 Frances Stoffo
 Ivette S. Stokvis
 Martin A. Stoll
 Lauren Stoltz
 Kenneth R. Strahs
 Student Activities Trust
 Maine Memorial
 Ann M. Subach
 James R. Sullivan
 Mary Sullivan
 Superior Florist Ltd
 Helen Suravlas
 Louis Swartz, M.D. PC
 Swede Farms
 Pamela & Allen Swerdlick
 Vlad Swetlitschnyj
 Ann T. Swolfs
 Sylvia D. Sznajder

Jeffrey A. Tannenbaum
 Philip P. Tavani
 Carmine Telesca
 TFC - Partners, Inc.
 The Catie Hoch Foundation
 The DeMatteis Family
 The General Organization
 of the Bronx
 Arlene Thomashow
 Todd Harris Co., Inc.
 Dino and Kathleen Tomassetti
 Torres & Associates
 Daniel Toscano
 David Trahan
 Virginia Travers
 Elizabeth Trebus
 Linda J. Tricarico
 Robert Trimble
 Tropham Foundation Inc.
 Kimberly & David Troyer
 Doris Truxal
 Anthony Tubia
 James Tyre
 U.F.C.W. Local 1500
 United Way of Delaware
 Uniformed Fire
 Officers Association
 United Schmilowitzer
 Ben. Society, Inc
 Vincent P. Ursino
 Heidi Valgoi
 Lorenzo T. Vanore
 Vantage Group, Inc.
 James Varco
 H. L. V. Varick
 Veritas Villa, Inc.
 Robert & Laura Villi and Glick
 Louis N. Vogel
 Ralph Vogel
 Eric & Judith Wagner
 Daniel L. Wallace
 Ann Walsh
 Jeannine, Jim, Tyler
 and Thomas Walsh
 Susan C. Waltman
 Joan Warburg
 The Weaver Family
 Webster Lock & Hardware
 Co. Inc.
 Weel Two Inc.
 Nancy Weinberg
 Peter and Molly Weinberger
 Doron and Andrea Weiner
 Jennifer Weiner
 Joshua Weingarten
 Graig and Michelle Weinstein

Inez Weinstein
 Michael Weinstock
 Leonard Weiss
 Russell Weissheier
 West Side Foods, Inc.
 Jakob J. Westra
 Joanne Wexler
 Eileen G. Whelley
 Carole White
 James P. White
 Brittany Whitley
 Kay J. Wight
 Sheara Wilensky
 Gwenn S. Winkhaus
 Peter Wise
 Seth Wohlberg
 Cynthia Wong
 Jennifer Wood
 Worldwide Construction
 & Restoration
 Steven Yedvarb
 Dixon Yee
 Debra G. Zeitlin
 Andrew J. Zelter
 Donna M. Zingarelli
 Robert Zirinsky
 Jay Zises
 George Zivic
 Theresa M. Zizzamia
 John Zurell

BALANCE SHEET

RONALD McDONALD HOUSE OF NEW YORK, INC.
 COMPARATIVE SUMMARY BALANCE SHEET
 DECEMBER 31, 2006 AND DECEMBER 31, 2007

	AUDITED DEC 31, 2006	UNAUDITED DEC 31, 2007
CURRENT ASSETS		
CASH AND CASH EQUIVALENTS	\$36,370	\$600
INTEREST RECEIVABLE	175,108	110,197
INVESTMENTS	26,888,677	31,503,257
DUE FROM McDONALD'S OWNER OPERATORS	1,200,000	1,200,000
OTHER CURRENT ASSETS	550,399	595,997
TOTAL CURRENT ASSETS	28,850,554	33,410,051
CONTRIBUTIONS AND PLEDGES RECEIVABLE	156,381	431,299
DUE FROM McDONALD'S OWNER OPERATORS GREATER THAN ONE YEAR	2,826,742	1,671,440
PROPERTY PLANT & EQUIPMENT - NET	30,452,796	29,563,415
OTHER ASSETS	178,937	152,093
TOTAL ASSETS	\$62,465,410	\$62,228,297
ACCOUNTS PAYABLE AND ACCRUED EXPENSES	\$1,095,129	\$1,231,043
BONDS PAYABLE	11,600,000	10,900,000
NET ASSETS	49,770,281	53,097,255
TOTAL LIABILITIES AND NET ASSETS	\$62,465,410	\$65,228,297
The December 31, 2007 balances are unaudited and a representation of Management		



*Connor Gerber, South Africa
and Cooper Proscia, San Ramon, CA*

YOU CAN GIVE COOPER THE ULTIMATE GIFT



ESTATE PLANNING

SUPPORT THE HOUSE **NOW** . . .

Use appreciated stock to make a tax-savvy gift to Ronald McDonald House. No capital gain tax is paid—so the full value of your stock is put to use here. And you earn a charitable deduction for that full fair market value.

Make a gift from your IRA. If you are 71 or over, you can make a distribution to us directly from your IRA. Your gift counts against your required minimum distribution and gets excluded from your income—you don't pay tax on it. This works great if you are required to take more than you need from your IRA because it helps you meet your minimum distribution in a tax-free way.

AND IN THE **FUTURE**.

Your Ronald McDonald House has inaugurated a program to encourage you to remember us in your will. Perhaps a bequest in your will is the best way for you to make your ultimate gift to support our critical work with children and families away from home.

A bequest to us is simple. Have your attorney use our legal name, The Ronald McDonald House of New York, Inc. and our federal tax ID number, 13-2933654 when they prepare or revise your will.

For more information about these ways of giving, contact Rick Martin, Director of Development, at 212-639-0206 or rmartin@rmdh.org.

IN THE NEXT ISSUE OF
AROUND
the **HOUSE**

30 YEARS **SPECIAL**
ANNIVERSARY
ISSUE PART 2