



Ronald McDonald House New York  
2012 Annual Report

# Families United



RONALD MCDONALD  
HOUSE® NEW YORK

Since 1978, Ronald McDonald House® New York has provided a temporary home-away-from-home for pediatric cancer patients and their families. The House is a supportive and caring environment that encourages and nurtures the development of child-to-child and parent-to-parent support systems. Ronald McDonald House New York is the largest facility of its type in the world.

Located on East 73<sup>rd</sup> Street in Manhattan and in close proximity to 13 major cancer treatment centers, Ronald McDonald House New York welcomes children and families from across the country and the world. The House can accommodate 84 families and is filled to capacity almost every night. Since its founding in 1978, more than 30,000 families have stayed at the House. Ronald McDonald House New York is a 501(c)(3) nonprofit organization.

For additional information, please visit [rmh-newyork.org](http://rmh-newyork.org), Facebook and Twitter (@rmhnewyork) or call (212) 639-0100.

# Table of Contents

Chairman & President's Letter .....	2
2012: Year in Review .....	3
Community: New York City & Ronald McDonald House.....	5
Programs.....	7
Arianna Blanco: Free to Be.....	9
Operations: Setting New Standards in Hospitality .....	12
2012 Occupancy Report .....	13
Service .....	14
A Special Report from Our Vice Chairman .....	16
2012 Donors.....	17
2012 Staff Giving .....	34
2012 Financial Statements .....	35
Leadership.....	37
Management Team .....	38
Join the Vivian Harris Society.....	39

On the cover, from the top: Abigail Kakarala, 4, with mom Donna and Aunt Debra Walker, VA; Onja Howard, 2½, with mom Nicole Gauldin; Arianna Blanco, 5, with mom Geraldine and dad Adrian

This page: Emilye Flick of Puyallup, WA



# Families United



Board Chairman Stanley B. Shopkorn, President & CEO William T. Sullivan with Dilynn Pedrotty, 2½, mom Elissa and grandma Carol Ritchie.

Unity. Little can rival the power of many coming together as one. It's the helping hand, and the shoulder to lean on in difficult times. And it's what allows children to know they're among those who know and understand them, even when the world seems not to.

At Ronald McDonald House® New York, fostering unity among families facing the challenges of pediatric cancer is at the heart of what we do. What's more, our mission is not only to keep individual families united, but to bring together many diverse families with shared circumstances and experiences, so that they can support one another in a way that no one else can.

This year we were able to continue our mission's work, building on our accomplishments and venturing into new areas to help children and their families. And thanks to the dedication and enthusiasm of our many donors and volunteers, our work in 2012 was underpinned by solid financials, despite the economic uncertainties of these times.

In addition to continuing and expanding on the House's existing programs, we undertook new initiatives in 2012 to reach even more patients and families than ever. Among them, we launched the Hospital Outreach Program, which seeks to support many of the children and families facing cancer that either weren't previously eligible to receive our assistance, or were unable to participate due to the complex nature of their circumstances.

In the following pages, you'll find more about this important program, as well as a brief overview of the year's many accomplishments and highlights.

The year 2013 represents a major milestone for us as we enter into our 35th year of operation. Building on the momentum of 2012, we expect to continue with the careful, well-planned growth of our programs. We know that we could not have accomplished many things without the kind, caring hearts of New York City and therefore we express heartfelt gratitude to all of our supporters. We know that with your continued thoughtful support, our focus on the mission will continue to create a lasting impact on all whose lives have been touched by Ronald McDonald House New York.

We hope you will consider joining us again — or perhaps for the very first time — as we work to unite families in new ways that will touch the lives of many, and may even help save the lives of children facing cancer.

Sincerely,

Stanley B. Shopkorn  
*Chairman of the Board*

William T. Sullivan  
*President & Chief Executive Officer*



## 2012: Year in Review

For every family that walks through our doors, the staff, volunteers and supporters of Ronald McDonald House® New York understand that their individual paths to get here have been unique. Throughout the 34 years that we've been in existence, we've seen our families' journeys filled with unimaginable challenges and triumphs. We are always encouraged, however, to see hope as the ever-present common thread that continues to guide their every step.

Since 1978, "the House" has served as a resting place for more than 30,000 families in the midst of their greatest fight — to save the lives of their children. In 2012, 733 families called our facility their "home" while receiving treatment at one of our 13 partner hospitals. In addition to the United States, we also received guests from 33 countries including Afghanistan, Armenia, Haiti, Iraq, the Netherlands, Singapore and Slovakia.

We started off the year still recovering from the loss of our dear friend and donor Niki Sideris of the Greek Division. Inspired by her courage and many years of service, we are pleased to tell you how the Greek community rallied behind our mission and helped to spread awareness of our families' great need. The walkathon and Christmas party fundraiser achieved record fundraising levels with the help of our expanded committee.

Our "Adopt-the-House" program kicked off a tremendous major giving effort that we believe has surpassed all expectations. In addition to our Tree of Life and the

Vivian Harris Society, our staff has been working closely with dedicated supporters throughout the community who wish to leave their mark and lend their name in the fight against childhood cancer.

In the spring, we held a number of events across many formats, but none so exciting as our 20th Annual Gala event, held at the Waldorf=Astoria Grand Ballroom. With a theme of "20 Reasons," the legendary Barbara Walters once again graced us with her presence as the Master of Ceremonies. Combined with her star power and the outstanding generosity of the financial and retail industries, we exceeded our goal. This helped us to continue the momentum throughout the year, as we raised funds to support operations and important upgrades that included the renovation of our guest rooms.

The successful launch of our Hospital Outreach Initiatives program has created an important connection for us at Ronald McDonald House New York. Beyond creating new opportunities to serve in tandem with our hospital partners, this project has allowed us to fulfill a dream of connecting with our local community in a new, meaningful way.

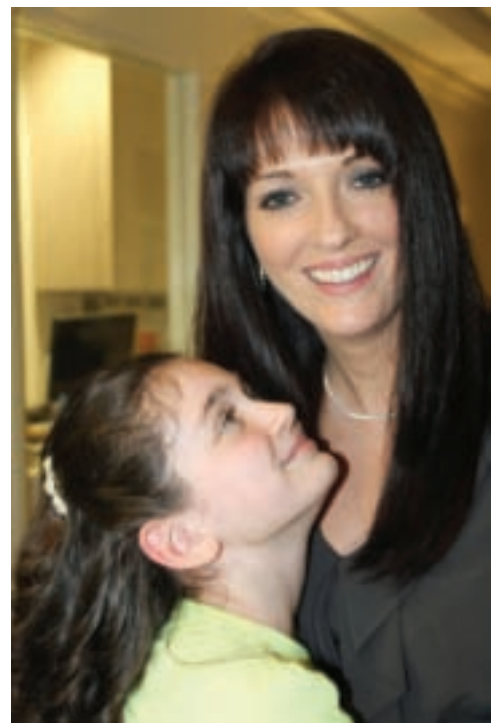
Community support has continued to have a major impact in our lives and we are always grateful for the ways that our community shows its love and care for our families. Whether through the successful Parents' Pantry program, or by supporting our Block Party, or even stopping by with a Wish List donation, these things say a lot to us.







We will never be able to tell our supporters how much we appreciate them. But we hope that you will understand our sincere gratitude for all of the work that you make possible.





# Community

No statement better illustrates the bond shared by the more than 300 chapters of Ronald McDonald House Charities than our theme of “Strength in Numbers.” It’s a concept made manifest every day in our guest rooms, throughout our hallways, in the dining room, the Macy’s Living Room and felt and heard throughout our many play areas.

Of the remarkable contributions made throughout the year by our generous donors, the most profound has been the overwhelming love and support that we receive from our community. At times, our volunteer corps represents a microcosm of the wonderfully diverse groups of people and cultures that make New York City the fabulous melting pot that it is. We are always heartened to see how people use their imagination and sheer talent to help create a true home-away-from-home for families who are dealing with devastating circumstances.

The 2012 Annual Gala, which was emceed by broadcast legend Barbara Walters, raised \$3.5 million dollars, exceeding the target goal by \$1 million. Honoring Neil Cole of the Iconix Brands Group, Inc. and Gregory Fleming of Morgan Stanley, the event featured four heartwarming and personal stories of residents who actually stayed in the house. Their stories of fighting cancer were told in song with the assistance of Michael McElroy and Broadway Inspirational Voices, and with the help of students from New York University’s Tisch School of the Arts.

One hundred forty-one community groups joined us during the dinner hour for more than 300 nights in 2012, working side-by-side with our nightly volunteers to provide a nutritious and nurturing meal experience followed by fun activities for the children.

The major gift program successfully launched its “Adopt-the-House” program, ending the year with nine rooms named in honor of very thoughtful donors, including the Guy M. Stewart Cancer Fund, John and Annalia Idol, Annaly Capital Management and Gary and Shelley Katz.

Known for our diverse array of entertaining events, the efforts of the Development Office produced a \$2.3 million dollar surplus of income over the budgeted income targets. Working closely with our Board of Directors and other volunteers, our campaign experienced record results from events and initiatives, including Skate with the Greats, Make a Difference Evening, the Celebrity Golf Outing at Ridgewood Country Club, and our direct mail program.

Many would agree that the key to a successful volunteer-driven campaign lies in an organization’s ability to work with its volunteer base to cultivate their personal interests and produce a fulfilling experience. Board Vice Chairman Tina Lundgren realized that phenomenon in the summer when she put together a 40-person triathlon team that included Buddy Van Vugt, trainer, two-time triathlete and team motivator;



From top:

RMH-NY Resident Jessica Fanini-Lemoine with Barbara Walters.

Honoree Neil Cole with brother Kenneth Cole.

Robert Kapito and Honoree Gregory Fleming with the Suthers.





Tim Goebel, 2002 Olympic figure skating bronze medalist; NFL Superbowl Champion Amani Toomer, formerly of the New York Giants; Meghan Baker, reporter for Fox News; Sapna Parikh, WABC-TV News medical correspondent; and Barry Kringstein, co-president of Herman Kay Company. The team raised more than \$165,000 in personal donations.

Although our Greek Division lost its founder Niki Sideris in 2011, the Greek community rallied tremendously throughout the year to renew its support of our mission. Following the naming of Greek Orthodox Archbishop Demetrios as the Division's honorary chairman, our annual walkathon and Christmas party saw record attendance and donations.

The members of our newly formed Board of Associates showed their mettle with the execution of "Masquerade," their first-ever gala event. Raising more than \$350,000, the event offered all of the elements of a memorable evening — mystery, celebrities, a curious balance between Batman and haute-everything — all while watching the sun set on the East River at Apella, a sleek and sexy space at the Alexandria Center.

Finally, we continued to receive support from our partners within the McDonald's Tri-State Owners and Operators Cooperative, who work around the clock to spread awareness about the deep impact of having the world's largest Ronald McDonald House so close on Manhattan's Upper East Side.

To learn how you can become involved and help to support Ronald McDonald House New York, please contact Richard Martin, Director of Development, at (212) 639-0206 or [rmartin@rmh-newyork.org](mailto:rmartin@rmh-newyork.org).



Counterclockwise from top right:

Skate with the Greats featuring NY Rangers legends.

Board of Associates' First Annual Gala, "Masquerade."

New York Giants Superbowl Champion Amani Toomer with resident Nora Getchell.

New York Knicks' JR Smith with the Route 29 Batman.

Annaly Capital Chairman, President & CEO Michael A. J. Farrell during a ribbon-cutting ceremony for the "Heart" kitchen with his family and staff.





## Programs

Childhood is a time of fun, exploration, and learning, and at Ronald McDonald House® New York, we're devoted to keeping it that way for the many children who visit us each year. In the caring and comfortable environment of the House, we provide a wide variety of programs to entertain, engage, and educate children. At the same time, we also look after the well-being of our children's caregivers, with programs that assist and support.

Education is a high priority at Ronald McDonald House New York, because it allows our guests' young minds to grow and provides a sense of continuity even when their lives may seem turned upside down. We work with parents to enroll children in local schools and also provide dedicated teachers to help with homework and tutoring. And for parents who need it, we also offer English as a second language classes.

When the school year arrived last fall, our third annual Welcome Back to Fall event helped kids greet it with enthusiasm. Thanks to the generous support of BDO USA, the House's "Lower Level Lounge" was transformed into a back-to-school heaven, with a wide variety of school supplies for pediatric cancer patients and their siblings. This year, we also expanded the program in conjunction with our new Hospital Outreach Program, distributing school supplies to pediatric cancer patients who live in New York City.

Beyond school, learning and growth come in many forms, and the arts are a rich source of growth and satisfaction for our guests. Music played a particularly important role in the House in 2012. Michael McElroy, president and founder of Broadway Inspirational Voices, performed "No Matter Where You Roam," a song written about the House, for 1,600 guests at our 20<sup>th</sup> Annual Gala.

# Programs

And in the fall, Broadway Inspirational also presented six brand new pieces composed for six of our families. The works were performed in concert for more than 150 Ronald McDonald House guests, staff, and friends of the House, and the concert was shared over Skype with families in two different hospitals.

Further enriching our music programs this year, the actor, singer, and recent Rock and Roll Hall of Fame inductee Darlene Love performed during a fundraiser event at the nearby Bohemian Lounge. Special VIP attendees included resident families of Ronald McDonald House New York. A long-standing Ronald McDonald House volunteer, Ms. Love also had an eye on the future with this performance, which laid the groundwork for an ongoing RMH Music Concert Series.

The visual arts also helped children find new ways this year to explore their own creativity. Volunteers from Calvin Klein, for example, hosted an event of drawing and painting, and the resulting works were unveiled during an exhibition for the families in the Macy's Living Room. In addition, the PVH Cares event displayed the children's creations in the Calvin Klein showroom.

This year, young residents also tried their hand at filmmaking, producing the House's second feature film, *Twisted History (of the World)*. With a full cast of 50 patients and siblings, the movie was shot over the course of the year. Volunteers helped write, produce,



"It's All About Love" when Rock and Roll Hall of Famer Darlene Love spends time with our families.



Top: Timothy Cardinal Dolan led a heartwarming mass on Christmas Eve, held especially for families staying at Ronald McDonald House New York.

Above: Our faithful volunteers, both human and canine, were on hand to celebrate the First Annual Family Fun Dog Walk this summer.

and edit the film, and celebrities Laura Woyasz and Alex Dunbar even made guest appearances.

In so many children's lives, summer camp is a place to see new things, meet new friends, and build lifelong memories. Thanks to Camp Ronald, 86 campers from Ronald McDonald House made their own memories of summer fun and exploration. Based at the House, campers were treated to 19 special events, including 16 trips to offsite locations, such as country clubs, kayaking, and amusement parks. Among the trips was a special visit to the Whitney Museum, where the campers took part in their own modern art workshop.

The Press Crew, a newsletter written by the Ronald McDonald House children, continued to receive lots of attention in 2012. Working closely with the communications department of Ronald McDonald House Charities (Global), the Press Crew created a wraparound for *USA Today* which was distributed to all those attending the biannual International McDonald's owner/operator conference in Chicago. This special Press Crew project included an interview with Ronald McDonald House Charities Board Chairman Linda Dunham.

## Family Support

Understanding that children's happiness depends on the entire family's well-being, we are always looking for ways to support and assist the whole family through our Department of Family Support. Our staff chaplain and psychologist are available to support caregivers and their family's spiritual and emotional needs. This year alone, they provided 5,075 spiritual and 1,017 emotional family support sessions, with more than 400 of these provided in hospitals. We also offer individual and family counseling, caregivers support group, stress management and bereavement care, in addition to various special programs throughout the year.

Among the year's family programs and events, Cardinal Dolan visited Ronald McDonald House New York to share the joy of Christmas with the children and their families. Having seen his own niece's successful battle with bone cancer more than 10 years ago, the Cardinal's connection with the House is particularly personal. After saying a special Christmas Eve mass, the Cardinal visited with the children and blessed them with prayers for healing.

We also held the sixth annual Mom's Spa Night event in conjunction with the Leukemia & Lymphoma Society of New York City, where caregivers received wellness and relaxation treatments. In addition, eight Women's Integrative Wellness nights and two Integrative Wellness Educational Seminars, offered support to hundreds throughout the year.

Participants in our therapy dog program took an ambitious step in helping to support our Family Support program by introducing a fundraiser for dog lovers in the city. "Angel on a Leash" partnered with Ronald McDonald House New York to host its first annual "Therapy Dog Family Fun Dog Walk" at Riverside Park. While the day brought a few sprinkles, it didn't stop our participants of the two-legged and four-legged variety. Hosted by NBC New York's Cat Greenleaf of "Talk Stoop," the event raised \$5,000.

Families also found support and comfort through the fifth annual Ronald McDonald House New York Block Party. We were especially pleased this year to develop a new and promising relationship with Duane Reade, who sponsored the event's Wellness Booth.

For information on Ronald McDonald House New York's programs, please contact Nelida Barreto, Director of Programs, at (212) 639-0100 or [nbarreto@rmh-newyork.org](mailto:nbarreto@rmh-newyork.org). To learn more about Family Support, contact Chaplain Cherilyn Frei at 212-639-0100 or [cfrei@rmh-newyork.org](mailto:cfrei@rmh-newyork.org), or visit [rmh-newyork.org](http://rmh-newyork.org).



## Arianna Blanco: Free to Be

In the Ronald McDonald House New York dining room, Arianna Blanco, 5, is a superstar. She cheerfully greets you as you enter the room, or speaks with remarkable self-assurance when delivering a message to her mother or grandmother as they cook some of her favorite meals. Arianna plays in the daytime with her friends, who are either siblings of other children receiving treatment at a nearby medical center, or little girls like her who are also undergoing treatment for cancer. And if not for the venue and her face mask, you'd never know she wasn't like any other 5-year-old. This little girl from Union, New Jersey, is as outspoken as she is fearless and for any number of things that we might tell you about her, one thing is guaranteed to happen once you meet her — you will never forget her.

Arianna's strong will is no doubt a major factor in how she beat her cancer; to hear about her journey, however, is both uplifting and heart-wrenching. As an infant, Arianna would become ill frequently, developing infections and running a fever at least once a month.

Things took a serious turn when she slipped into a coma just two days before her first birthday. Arianna's coma would last for two months, during which doctors would ultimately diagnose her with neutropenia, a condition where a patient suffers from an abnormally low count of infection-fighting white blood cells and is highly susceptible to illness. With little immunity to illness, Arianna had developed a bacterial infection that caused tissue in her nose to deteriorate.



For three years, Arianna battled with severe, chronic neutropenia and its related effects. Every day during those three years, she received an injection in her leg to fight off other illnesses.

Every year, Arianna received a blood biopsy as part of her treatment protocol to determine the severity of her illness. The biopsy performed in early 2012 provided alarming results: Arianna's spleen had swelled to dangerous proportions and test results showed that she had leukemia. Doctors scheduled surgery and promptly removed her spleen. After four days of recuperating at home, Arianna then went back to Memorial Sloan Kettering Cancer Center, where she received 10 straight days of chemotherapy to prepare her body for a bone marrow transplant.

Above left: Arianna Blanco shares a loving embrace with her parents Adrian and Geraldine Blanco.

Arianna and Geraldine strike a pose in the Playroom while getting glammed up for our Winter Social event, which was held at the New York Athletic Club.



This page: At 5 years old, Arianna is finally able to celebrate her life free from cancer.

Opposite page, clockwise from top left:

Arianna with her grandmother, Graciela, who arrived first at the Ronald McDonald House in New York to prepare the room for her daughter and granddaughter, post-transplant.

Center and right: Infant Arianna before her first bout with illness.

Free to be! Arianna celebrates the joys of being a normal little girl.

## Life at Ronald McDonald House New York

“When you meet someone like little Arianna Blanco, you can’t help but ask yourself, ‘how can someone so small muster the strength and the courage to face such a life-threatening challenge?’ But this is the journey that many of our families face, and they do it admirably,” said William T. Sullivan, president and CEO of Ronald McDonald House New York. “Each one of our families has taken unique turns in their road throughout their battle with cancer, and we’re honored to be able to provide a place of shelter during their time of need.”

Doctors determined Arianna’s mother, Geraldine, to be a viable donor match, and on June 25th she underwent a six-hour procedure to harvest tissue that would then be used in Arianna’s transplant surgery. Following her procedure, Geraldine, a stay-at-home mom, dutifully kept vigil at her daughter’s bedside where Arianna remained an inpatient for a month. Geraldine never returned home, but rather checked into Ronald McDonald New York, where she found a supportive place to stay just five blocks from Memorial Sloan Kettering Cancer Center. To assist with the transition, Geraldine’s mother came to New York from Uruguay to prepare the guest room

for her daughter and her granddaughter once they were both released from the hospital. It would be months before Geraldine or Arianna would return to their home in New Jersey.

Before coming to Ronald McDonald House New York, the family knew very little about the organization or its mission. They donated their spare change to the donation boxes whenever they visited a McDonald’s, but it wasn’t until Arianna’s health took such a dramatic turn that they learned firsthand how significant that mission was to families in need.

“Geraldine never gave up the fight, through battling the aggressive infection that ravaged her daughter’s face, then battling cancer after that. Geraldine knew she could not fight this disease alone and reached out to us for help almost immediately upon arrival,” said Chaplain Cherilyn Frei, director of Family Support. “She took advantage of our Women’s Integrative Wellness services, which helped her to unwind, relax and take better care of herself, so she could in turn take care of Arianna. Geraldine was able to regain some balance in her life while staying at the House, which enabled her to remain calm and focused through the course of Arianna’s treatment. Through her struggle to care for her family, Geraldine maintained an inner spiritual life from which she drew strength and shared openly.”

## Free as a Bird and on to a Normal Life

In Spanish, Geraldine explained that once Arianna was released from the hospital, the family returned to the Ronald McDonald House and little Arianna ran non-stop. For the first time in her life, she was free and able to play like a normal little girl without the hindrance of pain or medical tubes.

An even bigger milestone came when Arianna was able to celebrate her fifth birthday while staying at the House —





a bittersweet accomplishment considering her first birthday was spent in a coma. “Staff and volunteers quickly opened their hearts to Arianna, often chuckling in amazement at her uninhibited ability to meet and remember the names of everyone she came in contact with,” remembered Chaplain Frei. “Arianna was so unafraid and free — perhaps for the first time in her young life — to experience people and an environment that allowed her to finally be herself, and to explore all that she was becoming as a happy, well-adjusted child.”

Most importantly for Arianna, the House was a place where she felt she could be herself. Geraldine remembers the painful memories of people treating Arianna differently after her young face had suffered a deformity from a bacterial infection. As a mother, she explained that she was heartened to see her daughter making friends and building self-confidence when simply treated like a regular child.

In October 2012, Hurricane Sandy plowed through the family’s hometown of Union, New Jersey. While Geraldine and Arianna remained in New York City, Arianna’s father Adrian, a tractor trailer truck driver originally hailing from Argentina, was maintaining life back home, where he cared for Arianna’s older brother Santiago, who is now 19. With the isolation phase of Arianna’s medical care concluded, doctors gave the family the green light to return home so that they might rebuild after the storm.

Upon leaving Ronald McDonald House New York for good, Little Arianna left handmade “love notes” of thanks throughout the building to express her and her family’s gratitude.

After a long, difficult journey, the Blanco family received the news in February 2013 that Arianna was cancer-free. But as Arianna sees it, she’s now simply free to be herself.



# Operations: Setting Standards in Hospitality



Above: Tristin Greer of Chattanooga, TN, in the Heart Kitchen.

Top right: A newly renovated guest room.

Opposite page: Shannon Miller and her daughter Evey, of East Springfield, PA, spend a happy moment in the Macy's Living Room.

While much of what we do at Ronald McDonald House® New York depends on the understanding and compassion of staff and volunteers, our mission also depends critically on providing a secure facility that welcomes, comforts, and serves as a home away from home to our guests.

We continually strive to achieve the highest level of hospitality for the greatest number of guests, but doing so means improving and upgrading the House and its offerings in addition to daily maintenance.

In the past year, we are pleased to report a number of major accomplishments of this kind, thanks to the support of our generous and caring donors. Despite the potential for disruption of service, careful planning and scheduling of construction and renovations allowed us to welcome a high number of guests throughout the year. We hosted 2,093 guests (including family members and patients) from 733 families who stayed with us for a total of 19,401 nights in 2012. Guest reservations, or the sum of consecutive-night stays for all families, totaled 1,843.

Among the past year's highlights was the renovation of the most significant spaces of all: our guests rooms.

In 2012, 38 guests rooms were remodeled and upgraded, including new lighting, plumbing, flooring, and finishes. A number of improvements were made in direct response to feedback we received from our visiting families, such as the use of

hardwood floors in guest rooms instead of carpet, which previously presented increased allergy risks and other potential health issues.

Not all improvements were on the interior of the building. If you visited the House in the beginning of 2012, you may have seen scaffolding that covered the building as a result of efforts to maintain safe exterior masonry in accordance with local safety and building regulations. We were pleased to see the scaffolding come down in August — ahead of schedule — to reveal a newly repointed and up-to-code façade.

August marked the month that our families were treated to an upgraded transportation experience via two new, custom-built coach buses that were specially designed to accommodate special needs passengers. The vans were provided after we received a gracious gift from the Associated Builders and Owners of New York. Residents now receive complimentary transportation to treatment in Goshen Coach Pacer LS model buses, which feature large windows for excellent passenger visibility. The buses are also wheelchair accessible and can accommodate between eight and 12 passengers.

Other improvements in 2012 focused on the electronic infrastructure of the House, including the upgrading of our IT and security systems. As part of this work, we replaced the aging phone system for all guests and staff. Guest rooms were also equipped with an electronic lock system and safes for the security





## 2012 Occupancy Report

and peace-of-mind of our visitors. In addition, we upgraded our wireless network to give guests better coverage and faster, more secure Internet access.

Small but very meaningful conveniences were also a part of House improvements. Designed to provide more of the comforts of home, the Parents Pantry Program came into its own this year. Established in 2011 by Board Member Terry Bovin, the program coordinates donations through delivery and pickup of various pantry items from local schools. This year, the program truly blossomed, with more than 20 schools participating throughout the 2012–2013 academic year.

We continue to look for ways to improve, and since our founding, our efforts have continued to benefit immeasurably from supporters' generosity in the form of financial support and in-kind donations.

Our Wish List is one means by which our friends can identify and contribute needed goods and services. Our list includes items for our guests (toddlers, teens, parents, etc.) as well as the House (birthday party supplies, toys, bedding, cleaning products, etc.).

For information on our Wish List and other ways you can help keep families together during a time of challenge, please contact Wini Cudjoe at (212) 639-0100 or [wcudjoe@rmh-newyork.org](mailto:wcudjoe@rmh-newyork.org) or visit [rmh-newyork.org](http://rmh-newyork.org).



**Number of Guest Nights** ..... 19,401  
Sum of each individual night's stay by each family during the year



**Number of Guest Reservations** ..... 1,843  
Sum of each individual stay of consecutive nights by each family during the year



**Number of Families** ..... 733  
Number of individual families visiting the House during the year

**Number of Family Members** ..... 2,093  
Number of individual family visitors (including patient) during the year



**Distribution of Guest Nights Stayed**

<b>Short Term</b> (<8 days).....	<b>47%</b>
<b>Medium Term</b> (8–60 days).....	<b>41%</b>
<b>Long Term</b> (60+ days).....	<b>12%</b>

### Origin of Guests

#### United States and Territories

Alabama • Alaska • American Samoa • Arizona • Arkansas • California  
Colorado • Connecticut • Delaware • District of Columbia  
Federated States of Micronesia • Florida • Georgia • Guam • Hawaii  
Idaho • Illinois • Indiana • Iowa • Kansas • Kentucky • Louisiana  
Maine • Marshall Islands • Massachusetts • Michigan • Minnesota  
Mississippi • Missouri • Montana • Nebraska • Nevada • New Hampshire  
New Jersey • New Mexico • New York • North Carolina • North Dakota  
Northern Mariana Islands • Ohio • Oklahoma • Oregon • Palau  
Pennsylvania • Puerto Rico • Rhode Island • South Carolina  
South Dakota • Tennessee • Texas • Utah • Vermont • Virgin Islands  
Virginia • Washington • West Virginia • Wisconsin • Wyoming

#### Countries

Afghanistan • Armenia • Australia • Belize • Bolivia • Brazil • Canada  
China • Denmark • Dominican Republic • France • Great Britain • Greece  
Guatemala • Haiti • Iran • Iraq • Ireland • Israel • Italy • Republic of Korea  
The Netherlands • Nigeria • Norway • Poland • Russia • Singapore  
Slovakia • South Africa • Spain • Tajikistan • Venezuela

# Service



This page: Volunteer groups like Citrin Cooperman provide valuable assistance during cleaning days that help us to keep the facility spotless.

Opposite, top: Members of our Youth Advisory Council and RMH-NY Youth Ambassador Jake T. Austin lent a helping hand during our Annual Block Party.

Opposite bottom: Recognizing the 2012 Hope Award Winners: (l. to r.) Richard Tegtmeier and Tucker, Clemencia Colon-Neyland, Edith Dolowich, and Ruth Schlossberg with RMH-NY President & CEO William T. Sullivan.

For many years, our volunteer program has been considered one of New York City's most elite service experiences; its long waiting list is a telling attribute of its popularity. With an average tenure of five years, our Team Ronald volunteers' nightly commitment to serving our families has proven to be an extraordinary experience in myriad ways.

The year 2012 saw an evolution in the volunteer program that we believe has created opportunities on both our Team Ronald nightly teams, as well as for our community groups who faithfully visit to serve our families day and night.

We began the year with a reevaluation of our volunteer guidelines to ensure better consistency with RMHC Global's best practices. Team Ronald groups went through a series of refresher orientation sessions, and Terri Eggers our director of Volunteers created new opportunities based on feedback from the community:

- The Team Ronald nightly volunteer program was expanded to accommodate pending volunteer applicants, allowing fresh faces to join the team.
- The Youth Advisory Council was established, comprised of 18 teenage students ranging in age from 14-18, who have helped to establish new ways for young people to make a difference in the lives of our families. This group of highly motivated youths held numerous fundraisers which resulted in more than \$4,000 raised to support a spectacular fun-filled field trip to Chelsea Piers for our teenage residents.

- Introduced a new monthly email newsletter for volunteers, "The Ronald Report," with a distribution of 450 volunteers highlighting activities, House updates and upcoming events.
- Training seminars were introduced featuring talks by clinical staff affiliated with our hospital partners. These talks included an overview of pediatric cancer and treatment options while others highlighted neuroblastoma, sarcoma, neuro-oncology, leukemia/lymphoma, and cardiopulmonary resuscitation for infants, children and adults.

Held each year during National Volunteer Week, this year's Hope Awards ceremony recognized the contributions of Clemencia "Clem" Colon-Neyland, Edith Dolowich, Ruth Schlossberg, and Richard "Dick" Tegtmeier with his therapy dog Tucker.

We cannot express just how grateful we are to the hundreds of individuals within our community groups who assist us in providing meals to our families and keeping a clean facility for our residents with compromised immune systems. In 2012, our corporate and community volunteer groups performed more than 9,649 hours of service to the House. In total, more than 140 groups, including the NYPD's 19th Precinct, Hope for New York, JP Morgan Chase & Co., and the NBA/WNBA, joined us during the dinner hour to help serve meals. Dedicated volunteers from groups including Team AOL, DELL, and GlaxoSmithKline were extraordinarily helpful in helping to keep the common areas of our 100,000 square foot facility spotless.



Outside of the facility, our volunteers assume the role of ambassadors, helping to spread the word about our mission. At the annual Team Ronald event fundraiser, “Open Arms,” more than 600 attendees raised over \$500,000 in cash donations and in-kind gifts. Held at the beautiful Guastavino’s, located underneath the 59th Street Bridge, “Open Arms” featured a sumptuous feast from sponsor Tony’s DiNapoli, with music by D.J. Mr. Biggs and Gotham Roots Orchestra. This built up the momentum for six other events held throughout the year, including The Parlour, Sessions 73 Poker Night and Westchester Jets Night.

For information about volunteer opportunities, please contact Terri Eggers, Director of Volunteers, at (212) 639-0712 or [teggerts@rmh-newyork.org](mailto:teggerts@rmh-newyork.org) or visit [rmh-newyork.org](http://rmh-newyork.org).





# A Special Report from Our Vice Chairman



## Long-Range Planning Committee

Harris Diamond  
*Vice Chairman of the Board  
Chairman, Long-Range Planning  
Committee*

Steven Bensinger  
Terry Bovin  
William Carroll, MD  
Jerry de St. Paer  
Shelly S. Friedman, Esq.  
Candace Leeds  
Rocco Maggiotto  
Lee H. Perlman  
Rick Richardson  
Peter L. Samaha  
Dave Gibbs  
Dr. Andrew Kung  
Nancy Nichols

Dear Friends,

We are pleased to report the launch of our Hospital Outreach Initiative in 2012. The three components of the Initiative — Hospital Outreach, Navigation, and Inpatient — have each provided enhanced support and services to patients, siblings, and caregivers.

The unique nature of world-class cancer treatment in New York City provides highly sought-after help for pediatric cancer patients and their families from the tri-state area, across the United States and many countries around the world. For 35 years, the Ronald McDonald House has been a home-away-from-home for nearly 30,000 families.

Our Hospital Outreach programs successfully offered quarterly events at the Ronald McDonald House for New York City-area children being treated for cancer and other serious illnesses at four of our partner hospitals. In June, we held a Welcome New York open house event for an afternoon of activities for their families and House families to have fun together. Since that time the program has continued with a Back to Fall and Halloween Boo Bash. On-site programs are also underway in areas of Magical Music, M3-Motivation, Mediation, and Martial Arts. Additional programs in reading, tutoring and ESL will begin in 2013. Currently, our partners in this program include Morgan Stanley Children's Hospital of New York-Presbyterian, Hospital for Special Surgery, NYU Langone Medical Center, and the New York-Presbyterian/Weill Cornell Medical Center.

Through Navigation assistance, first-time families to the House received the guidance they needed while getting acclimated to life in New York City, no matter the length of their stay. In addition to the implementation of "Host" program where dedicated staff and volunteers accompany families to hospital appointments and neighborhood tours during their first week, welcome kits have been widely distributed to assist in their transition.

Thanks to our Inpatient component, the bedside services have helped hundreds of patients and their families. Daily contact with RMH NY staff and volunteers results in concierge type assistance and wellness care for caregivers to all of our resident families receiving treatment at any of our thirteen hospital partners. During the Hurricane Sandy super storm, we assisted in relocating and reuniting three families who were displaced.

We very much look forward to helping improve the lives of even more children and their families through our Hospital Outreach Initiative in 2013.

Sincerely,



Harris Diamond  
*Vice Chairman of the Board and Chairman,  
Long-Range Planning Committee*

# Donors

Ronald McDonald House® New York gratefully acknowledges its many donors, volunteers and community groups for their generosity and support in 2012. Ronald McDonald House New York is locally owned and operated by an independent, nonprofit corporation and is entirely dependent upon support from individuals, businesses, foundations and community groups.

We thank all those who have supported us from December 31, 2011, through December 31, 2012. If we have erred or omitted anyone, we apologize and ask that you please contact Michael Ballew, Donor Management Systems Director, at (212) 639-0209 or mballew@rmh-newyork.org, so that we may correct our records.

## **\$100,000 and Over**

Annaly Capital Management Inc.  
Dr. Kathryn & Mr. Bruce Beal  
BlackRock  
The Blavatnik Family Foundation  
Bloomberg  
Children's Happy Faces Foundation  
Lizzy & Neil Cole  
Cuttone & Co. Inc  
Dasha Wellness  
Delta Faucet Company  
Amy & Harris Diamond  
The Family of Michael A. J. Farrell  
Charitable Lead Annuity Trust Under the Will of Louis Feil  
Fidelity National Title Insurance Company  
Melissa & Gregory Fleming  
Goldman, Sachs & Co.  
The Greek Division  
Guy M. Stewart Cancer Fund, Inc.  
Hilltop Park Associates, LLC  
Iconix Brand Group, Inc.  
Annalia & John Idol  
JAT Capital Management, L.P.  
JPMorgan Chase & Co.  
Shelley & Gary Katz  
Knight Capital Group Inc.  
Rebecca & Sacha Lainovic  
Elaine & Kenneth G. Langone  
LF USA  
Tina & Terry Lundgren  
Rose & Eric Lyght  
Macy's & Bloomingdale's  
Marsh Inc.  
Morgan Stanley & Co.  
Naddisy Foundation  
PVH Corp.  
RBC Capital Markets  
Ronald McDonald House Charities-  
New York Tri-State Area  
Tracy & Stanley B. Shopkorn  
Southwest Airlines  
The Jones Group Inc.  
Warnaco, Inc.  
Weber Shandwick Worldwide  
Zurich

## **\$50,000-\$99,999**

Sol and Margaret Berger Foundation  
Bulkley Dunton Publishing Group  
Calvin Klein, Inc.

Camuto Group  
Louise & Vincent Camuto  
Dianne & Wesley R. Card  
The Coca-Cola Company  
DG3 - Diversified Global Graphics Group  
Jill & Alexander Dimitrief  
Duty Free Americas & The Falic Foundation  
Margaret & Robert B. Fagenson  
Susan & Randell A. Falco  
Fares Foundation  
Fashion Delivers  
Estate of Joseph Fursa  
Garden Of Dreams Foundation  
General Maritime Corp. (GMR)  
Kara & Peter Georgiopoulos  
Grandstand Sports & Memorabilia, Inc.  
Mark Greenberg, Cenveo  
Gail & Joseph Gromek  
Ms. Nicole Foster & Mr. Robert Grubert  
International Securities Exchange  
Invesco  
Harriet & Stuart Levine  
Lumber Liquidators  
Massey Knakal Realty Services  
Michael Kors  
Robert Michiels  
MS International  
Mutual of America  
Neuman's Catering  
New York Athletic Club  
New York Mets Foundation, Inc.  
New York Rangers  
NewPage  
Peerless Clothing International Inc.  
PricewaterhouseCoopers, LLP  
Carol & Lawrence Saper  
Alicia Settle  
The Skirball Foundation  
Tony's Di Napoli, Inc.  
Touradji Capital Management, LP/  
Touradji Family Foundation  
Williams Lea North America  
Yonkers Fire Fighters Local 628  
Charities Fund

## **\$25,000-\$49,999**

Alice + Olivia  
American Express Co.  
American Honda Motor Inc.  
Judy & John M. Angelo  
Barclays Capital Inc.

The Sandra Atlas Bass & Edythe  
& Sol Atlas Fund, Inc.  
Bauca New York, LLC  
BDO USA, LLP  
John E. Beckwith  
Benjamin Moore & Co.  
Jena & Milton R. Berlinski  
Blank Rome LLP  
BMW Group  
Bob Ray Photography  
Bonnie & Allen Sirkin  
James J. Burke, Jr.  
Trish Wescoat Pound & Jesse Cole  
Colgate Restoration, Corp.  
Davis Polk & Wardwell  
Deloitte & Touche LLP  
Fiona B. & Stanley Druckenmiller  
Barbara & Norman Eig  
Fairchild Fashion Media  
Fidelity Investments  
Heather & James Fortescue  
The Fridolin Charitable Trust  
Melissa & Casey L. Gard  
Bruce G. Geary Foundation  
Genco Shipping and Trading  
Golf Digest  
Guess? Foundation  
Hess Foundation Inc.  
Himan Brown Charitable Trust  
Estate of Frank H. Huber  
Syde Hurdus Foundation, Inc.  
Interpublic Group of Companies  
ITG, Inc.  
Kerry & James A. Jacobson  
Jones Lang LaSalle  
Sonia & Paul Tudor Jones, II  
Lisa & Thomas M. Joyce  
Caroline & Sidney Kimmel  
Kristopher R. Konrad  
Kramer Levin Naftalis & Frankel  
LLP  
Janet & James MacGilvray  
Marc Ecko Enterprises  
McKinsey & Company, Inc.  
Albert J. Mellina  
Michael D. Melnick  
Merlin Securities  
Sheila & Joel Newman  
Jane & David A. Preiser  
RM Enterprises  
Ross Stores, Inc.  
Rotary Foundation of New York  
Myron P. Shevell  
The Sirkin Family Charitable  
Soros Fund Chaitable Foundation  
Matching  
The Susan Block Stearns  
Revocable Trust  
Eric Szabo  
Tekserve Corporation  
The TJX Companies, Inc.  
& The TJX Foundation  
Turner Construction Company  
Univision Management Company  
VF Corporation  
Weil, Gotshal & Manges LLP  
Jason Wu

**\$20,000–\$24,999**

Active Media Services, Inc.  
Zach Buchwald  
Burlington Coat Factory  
Central Synagogue  
Dallas BBQ  
Deutsch, Inc.  
Eli's Bread  
Hole In The Wall Gang Camp  
Susan & Michael Kerr  
Marie O'Brien  
Rao's  
John J. Rohs  
State News  
Steiner Sports Memorabilia  
Keren and Guy Weltsch

**\$15,000–\$19,999**

Aldwick Textile Company Limited  
Ann Inc.  
Tracy & Frank Bisignano  
Debra & Leon Black  
Nicholas Botta  
Citrin, Cooperman & Company  
Cravath, Swaine & Moore LLP  
Michael Davis  
Jodi & Bruce Dimpflmaier  
Efficient Combustion & Cooling  
Corp.  
Ralph Fink Foundation  
Kathleen & James F. Flanagan  
Ellen R. Harris  
HCC Global Financial Products  
The Heller Family Foundation  
Hercules Corp.  
Icon Painting & Interiors  
Industrial Consulting & Marketing  
Jiangsu Guotai Huasheng  
Industrial Co. Ltd.  
Marla H. Kennedy  
Kevin G. Keyes  
Margaret & Anthony King  
Savas Konstantinides  
Matthew J. Lambiase  
James T. Lee Foundation, Inc.  
Liberty Mutual Insurance  
Nancy & Howard Marks  
Estate of Elvira Milanese  
NAEIR  
Rosalie Pataro, L.P.C.  
Prestige Apparel Mfg. LTD Co.  
The Stewart J. Rahr Foundation  
Realty Textiles Company Limited  
Kim & Mark Standish  
The Peter and Caroline Striano  
Foundation, Inc.  
William T. Sullivan  
Tommie Cooper, Inc.  
Mr. & Mrs. Patrick J. Welsh

**\$10,000–\$14,999**

American Funds Distributors, Inc.  
American Media  
Peggy & Keith T. Anderson  
Archie Comics Publication Inc.  
Balyasny Asset Management, LLC  
Bank of America Matching Gift  
Foundation  
Bargold Storage Systems, LLC

Jerome Belson  
Steven J. Bensinger  
Mr. & Mrs. Jeff Blau  
Blue Mountain Capital  
Management  
BNY Mellon Asset Servicing  
Broadridge  
Brookfield Financial Prop. L.P.  
Brooklyn Nets  
Henry M. Buhl  
Burlington Coat Factory  
Cashedge Inc. now part of Fiserv  
John & Margo Catsimatidis  
Foundation, Inc.  
Cauldwell-Wingate Company,  
LLC  
Centurion Holdings  
Charles Schulz Creative Associates  
Cherry Group  
Citigroup Global Markets Inc.  
Classic Fashion Apparel Industry  
Ltd Co.  
Clayton, Dubilier & Rice LLC  
Steven A. & Alexandra M. Cohen  
Foundation, Inc.  
Joseph Cohen  
Teresa & Bruce D. Colley  
Columbia Management  
Mr. & Mrs. Robert E. Coughlin  
Daniels, Norelli, Scully &  
Cecere, P.C.  
The Raymond Debbane Family  
Foundation  
Dechert LLP  
Alexandra Denahan  
Digital Realty Trust  
Arthur S. Doerner Private  
Foundation  
Dress Barn  
Duane Reade Charitable  
Foundation  
Eastdil Secured  
Eataly  
Eaton Vance  
Eats  
Blair W. Effron  
The Eisner Foundation  
EMC Corporation  
Estée Lauder Inc.  
Kathryn Fagan  
Federated Investors  
Evette Ferguson  
Fidelity Capital Markets  
FIS Foundation, Inc.  
Jeffrey & Leslie Fischer Family  
Foundation Trust  
Franklin Templeton Investments  
Fried, Frank, Harris, Shriver &  
Jacobson LLP  
Friedman & Gotbaum, LLP  
Ms. Elissa Meyers & Mr. Shelly S.  
Friedman  
Fulbright & Jaworski L.L.P.  
G - III Apparel Group  
The Gaisman Foundation  
Ira Ganger (Amerex Group)  
Robert C. Gasser  
GDO Contracting Corp.  
GE Capital Corporation

Mr. & Mrs. Fred Gehring  
Greenberg Traurig  
Mr. & Mrs. William Guinan  
The Company Store  
Hess Corporation  
Craig Hetherington  
Hitachi Data Systems  
Homedics, Inc.  
Hugh O'Kane Electric Company,  
Inc.  
Hugoton Foundation  
In Mocean Group, LLC  
Integrated Energy Concepts  
Engineering, P.C.  
Integrated HVAC Systems &  
Services Inc.  
Ironshore Management Inc.  
Island Capital Group  
Ivy Funds Distributor, Inc.  
Jackson Lewis LLP  
Barbara & Theodore P. Janulis  
JCPenney Company, Inc.  
Joele Frank, Wilkinson Brimmer  
Katcher  
JP Mac LLC  
Mr. & Ms. Robert B. Karofsky  
Kellwood  
Kenneth Cole  
Korn/Ferry International  
KPMG LLP  
Christopher T. Kraus  
Mr. & Mrs. Barry C. Kringstein  
Betty & Robert E. LaBlanc  
Lazard Freres & Co. LLC  
Legg Mason & Co., LLC  
Laurence W. Levine Foundation,  
Inc.  
Ken Lewis  
Liquidnet Holdings, Inc.  
Log-Net Inc.  
Lord, Abbot & Co, LLC  
Chris Lucy  
The Madison Square Garden  
Company  
Man Investments Holding Inc.  
Frederick Kane Marek  
Kristine & Michael Marrale  
Paula & Tom McNerney  
David McNeil  
Mr. & Mrs. James P. McTernan  
Meezan Bank  
Memorial Sloan-Kettering  
Cancer Center  
MIG Holdings  
The Moret Group  
Mulligan Security Corp  
Mary & William F. Murdy  
The NAREIT Foundation  
Nervous Tattoo  
NetApp  
Neuberger Berman  
New York City Fire Department  
- Engine 44  
New York City Police  
Department - 17th Precinct  
New York City Police  
Department - 19th Precinct  
New York City Police  
Department - 20th Precinct



New York Football Giants Inc.  
New York–Presbyterian Hospital  
New York Yankees  
Kristina Sywolski Newman  
NYU Cancer Institute  
Jean & Richard J. O'Reilly  
Opera Solutions  
Leolin Orefice  
Scott Panzer  
Pershing Square Capital  
Management  
Peter J. Solomon Company, L.P.  
PGA Tour, Inc.  
Phillips Nizer LLP  
Mr. & Mrs. John M. Philo  
Philoptochos Society of the  
Greek Orthodox Archdiocesan  
Cathedral  
Pioneer Investments  
Porter Novelli  
Price Metrix  
Pro Football Hall of Fame  
Prudential Financial, Inc.  
Ralph Lauren Corporation  
Red Apple Companies  
Rudy Saviano, Inc.  
Arthur J. Samberg  
Sandler, Travis & Rosenberg, P.A.  
SAP  
Searsdale Firefighters Local 1394  
Shearman & Sterling  
Signmasters Inc.  
Situs Companies  
Skadden, Arps, Slate, Meagher &  
Flom LLP  
Jeffrey Q. Smith  
Societe Generale  
The Sollar Foundation, Inc.  
Joan M. Squires  
State Street Bank  
Jane and Frances Stein Foundation  
Steve Madden  
Rocco Strazzella  
Tata Consultancy Services  
Tharanco Lifestyles  
Theory  
Time Warner Cable  
Tisch Foundation, Inc.  
Joan Tisch  
Tishman Speyer Properties, LP  
Toll Global Forwarding  
Topson Downs  
TrueSense Marketing  
Trump Organization  
United Way of New York City  
Universal Express Ltd.  
VDI, Inc.  
The Viola Fund  
Vitaquest International LLC  
Viva International Group  
The Vortex Group  
Wachtell, Lipton, Rosen, & Katz  
Estate of John F. Waitz  
Wells Fargo  
White & Case LLP  
Timothy J. White

**\$7,500–\$9,999**

ACE Group  
AFCO Credit Corporation  
Sabrina & Michael Antonacci  
AOL  
Aon  
Art for Life and Education  
Arthur J. Gallagher & Co.  
Bradford Renaissance Portraits  
Corp.  
BTIG, LLC  
CBRE  
Chartis Insurance  
Chubb & Son Inc.  
Critical Solutions & Innovations  
Crump Insurance Services  
Deutsche Bank  
Direct Edge, Inc.  
Patricia Donaldson  
Equinox  
Barbara & R. Bradford Evans  
Freeman & Co., LLC  
Joshua Glazer  
Graphic Service Bureau  
Robert L. Harteveltd  
ICAS Corp.  
Integro USA Inc.  
IO  
L.H. Frishkoff & Company LLP  
Richard H. Martin  
Mayer Brown LLP  
Metal Lathers & Reinforcing Iron  
Workers Local Union #46  
NCB  
New York Community Bank  
Foundation/Atlantic Bank of  
New York  
Nishatpak  
The Lawrence and Illana Raia  
Foundation, Inc.  
Barry Rosenstein  
RT Specialty - New York  
Safety National Casualty  
Corporation  
Save a Young Life Foundation  
SBFI N.A., Inc.  
Audrey & Richard Stadin  
Michelle T.S warzman  
Synchron, Inc.  
Richard Tavoso & Lee Ann Tavoso  
Howard B. Teig  
Temple Emanu-El Women's  
Auxiliary  
The Petco Foundation  
The James & Meryl Tisch  
Foundation  
Tishman Construction  
Corporation  
Trapeze School  
Tri-Star Construction Corp.  
Jenny & Michael A. Weisburger  
XL Insurance

**\$5,000–\$7,499**

Adco Electrical Corporation  
Aegean Marine Petroleum  
Network  
Steve Alexiou  
Maria Allwin

Mr. & Mrs. David Altman  
Anthony Anagnostakis  
ARA Construcdtion  
Arthur C. Klem, Inc.  
Assured Environments Pest  
Control  
Dimitrios E. Balodimas  
Joseph M. Barber  
Timothy L. Barefield  
Steven M. Barry  
Battley Performance Consulting,  
Inc.  
Belk  
Mr. & Mrs. Jeffrey A. Bersh  
Bettina Equities Company, LLC  
The Bloomingdale's Fund of the  
Macy's Foundation  
Bloomingdale's  
Bollinger Insurance  
Terry & Denis Bovin  
BP Elevator Co.  
BREA Equity Office Properties  
Rachael Buckner-Caraballo  
Brooke & Shawn Byers  
CAC Industries, Inc.  
Cantor Fitzgerald  
Capital One, N.A.  
Anne & Les Carter  
Casey Quirk & Associates  
Robert P. Castrignano  
Central Parking Corporation  
Cerberus Capital Management L.P.  
Mr. & Mrs. Samuel R. Chapin  
Tony Cheng  
Ciampa Management Corporation  
Mr. & Mrs. Eric Cole  
Craryville Associates LLC  
Estate of Pearl Crescenti  
D&B Insurance Solutions  
Robert Dalelio  
Dany Levy Foundation  
Florence L. De Lavalette  
Michelle DeAngelis  
Demar Plumbing Corp  
Laura & James DeMare  
Wellington Denahan  
DLA Piper LLP  
Doscas Family Foundation  
Dunwell Elevator Electrical  
Industries Inc  
Dynamic Moving And Storage  
ePromos Promotional Products,  
Inc.  
Julie & Jonas Fajgenbaum  
Jennifer Farber  
Farina Family Foundation, Inc.  
Ms. Robin Allstadt &  
Mr. Jeffrey D. Fields  
Fine Busy Limited  
Daria L. Foster  
Deborah & John Freer  
Fulvio & Associates, LLP  
G-III Leather Fashions, Inc.  
Gallet Dreyer & Berkey, LLP  
Geoffrey Beene Foundation  
Gibgot, Willenbacher & Co.  
Gilsanz Murray Steficek, LLP  
Mr. & Mrs. Laurence Gluck  
William Goda

Goya Cathedral Of Saint John  
Karen Greene  
Grunfeld, Desiderio, Lebowitz,  
Silverman & Klestadt LLP  
Mr. & Mrs. Bruce Guthart  
David B. Hartnett  
Hatzel & Buehler Inc.  
Wendy Holman  
Andrea & Craig Horowitz  
Houlihan LoKey  
Ideal Plumbing Corp.  
Inserra Shoprite Stores  
Itochu Prominent USA LLC  
J.W. O'Connor & Co. Inc.  
JAD Corp. of America  
Mary Jaharis  
JDP Mechanical, Inc.  
Jacques Jiha  
Sandi & Harris Kalish  
Robert M. Karner  
The Katzenberger Foundation  
Ronald Kazel  
Michael Keating  
Keefe, Bruyette & Woods  
Keller, O'Reilly & Watson, P.C.  
The Nancy and John Kelly  
Family Foundation  
Kids Who Care For Kids, Inc.  
Killian Family Foundation  
The King Street Charitable Trust  
Mapleton Kiwanis Club  
Konner Teitelbaum &  
Gallagher, P.C.  
Robert Kraft  
Amy Krawczyk  
Lake Group Media, Inc.  
Leslie L. Lake  
Lakewood Capital  
Management, LP  
Mr. & Mrs. Pierre Lapeyre  
Candace Leeds  
Liffey Van Lines, Inc  
Litwin Foundation, Inc.  
The David & Sondra Mack  
Foundation, Inc.  
Macy's, Inc. Matching Gift  
Program  
Jay Mandelbaum  
Mark Mehl Charitable Trust  
Marsicano Foundation  
MasterCard  
David W. Matthews  
Ms. Maura Copeland &  
Mr. Frank Tworecke  
Max Parangi Architects  
Mc Gowan Builders, inc.  
Mr. & Mrs. Francesca McBride  
MerchSource, LLC  
Paul Metcalf  
Amy & Dwight Meyer  
Milbank Foundation for  
Rehabilitation  
Dana & Michael Miller  
Min & Chung Enterprises,  
TH Corp  
Moelis & Company Holdings  
The Motion Picture Club  
Foundation  
James Murtagh

Nancy Murtha  
National Maintenance Supplies  
Nead Electric, Inc.  
Network For Good  
New York Plumbing & Heating  
Corp.  
NYSE Euronext Group  
Maureen O'Hara  
Odin Marine Group  
Douglas Oliver & Sherry Brovs  
Robert A. Olstein  
Nora & James Orphanides  
P.J. Mechanical Corp  
Palm Bay International  
Spiros Papas  
Paul Hastings LLP  
Heather Peplinski  
Joseph Petite  
PGEI of America Charitable  
Foundation, Inc.  
Frederick P. Pierce  
Platinum Maintenance  
Pop-A-Lock  
Port Logistics Group  
Dr. Lisa Port  
RailWorks Corporation  
Mr. & Mrs. Charles E. Rappold, II  
Patricia & James A. Read  
Andrew Rosen  
Mr. Mark E. Rosenthal & Ms.  
Martha J. Revenaugh  
The Edward John & Patricia  
Rosenwald Foundation  
Jason Rubach  
May and Samuel Rudin Family  
Foundation, Inc.  
RYJAK LLC  
Marilyn Safenowitz  
Mr. & Mrs. Stephen Scherr  
Scholes Electric &  
Communications  
Barry K. Schwartz  
Jeffrey Schwartz  
Sciame Construction Co.  
The Securecom Group  
The Shumway Foundation  
Mr. & Mrs. David Silverman  
Christopher Simeone  
Mr. & Mrs. James Simons  
Simpson Thacher & Bartlett LLP  
Skuld North America, Inc.  
Degna Spoldi  
Start Elevator  
Kristin & Clifford Sterling  
Stonebridge Steel Erection  
Tom Strohmenger  
Taylor Swift  
Felicia Taylor  
Nancy & Mark Taylor  
Vincent Terranova  
Laura & Chris Theodoros  
Cyril Thottam  
TMBA  
Tradeweb  
Christina Tsesmelis  
Uneeda Enterprises  
WDF Inc.

Weihai Textile  
Wells Fargo Capital Finance  
John White  
Allison Wolfson  
The A. Woodner Fund, Inc.  
**\$2,500-\$4,999**  
352 Restaurant Corp.  
ABM Janitorial Services -  
Northeast Inc.  
Kristen & Thomas Acquafredda  
Aetna  
Elpida Alexiou  
Hanna D. Altman  
Mr. & Mrs. Robert Altman  
American Girl  
Anchin, Block & Anchin, LLP  
Arnold & Porter LLP  
Aronson Mayefsky & Sloan, LLP  
Asco Power Technologies, LP  
ASM Mechanical Systems  
Franz Bacon  
Bank of America Merrill Lynch  
Barbara Barnett  
Susan S. & Ricardo M. Barragan  
Franklin W. Bartlett, III  
Beazley Group  
Mr. & Mrs. Allison Bergman  
Blue Woods Management Group,  
Inc.  
Bon Ton Stores, Inc.  
Edna L. Breecker  
Buckingham Capital  
Management, Inc.  
Byron New York  
Louise A. Cangialosi  
James J. Capra, Jr.  
Central Construction  
Management LLC  
Charles R. Weber Co.  
Josephine Chaus  
Checker Management Corp.  
Joanne & Manny Chirico  
Chutemaster/3M  
City National Bank  
Christopher Clasen  
Corcoran Group Real Estate  
Peter P. Corritori  
County Tipperary National &  
Benevolent Assoc. State of NY  
Fay Dawes Couyoumjan  
Ms. Wini Cudjoe & Mr. Herve  
Vixamar  
Daughters of Penelope Medusa  
Chapter #345  
William De Leon  
Deutsche Bank AG Matching Gift  
Mr. & Mrs. Jeremy Diamond  
Rosemarie & Joseph DiLorenzo  
Valerie DiFebo & Dixon Byrne  
Donaldson Organization  
Cornelius T. Dorans  
Douglas Elliman Property  
Management  
Durnan Group, Inc.  
Nick Economou  
Emerson - Liebert Corp.  
Evertrend Textile Limited  
F-Factor Nutrition

Fabra Cleen Carpet & Fabric  
Specialist, Inc.  
Facade Maintenance Design  
Guy Farrington  
Freedom Specialty/Nationwide  
Insurance  
Frenkel & Co., Inc.  
Mr. & Mrs. John Gaffney  
Liane Ginsberg  
Goldman Sachs Gives UK  
Michelle Paretti &  
Glenn Goldstein  
Golenbock Eiseman Assor Bell  
& Peskoe LLP  
Barbara F. Gottesman  
Perry Granoff  
Daniel Grattan  
Jack & Barbara Gross  
Susanne & Robert Grubert  
Joseph M. Guidetti & Robb Perry  
H & D Maintenance Co Inc.  
Jennifer Hadiaris  
Jonathan M. Harris  
Kathleen & Marc Harris  
Heidmar Inc.  
The Helping Hands Sales  
Andrew Hertzmark  
Highland Associates  
Franklin W. Hobbs  
Jeff Hyman  
IAT Reinsurance Co. LTD  
IBM Employee Services Center  
IMAX Corporation  
Io Travel Group  
John Civetta & Sons, Inc.  
Robert L. Johnson  
JRM Construction Management  
Kakarala Foundation  
Roland N. Karlen  
Kaye, Scholer, Fierman, Hays &  
Handler  
Lisa Kelly Maik  
Kemper System, Inc.  
Charles Kibel  
Lynn & Tom King  
Kings County Waterproofing  
Corp.  
Gayle R. Klein  
Scott Landis  
Lasky Charitable Lead Trust  
Laub Realty  
The Bernard and Muriel Lauren  
Foundation  
Thomas V. Leeds  
Patrick J. Lenz  
Carolyn Levitt  
Benjamin H. Lewis  
Li & Fung (Trading) Ltd.  
Links and Laces Golf Tour  
Jo Sullivan Loesser  
Jeremy London  
LTD Mechanical Corp.  
M&M Expediting Corp  
M&N Management Inc.  
Joseph and Katherine Macari  
Foundation  
Daniel Manfredonia  
John J. Mayorek  
Estate of Yvonne H McDonald

Constance B. McGillicuddy  
Mel's Burger Bar  
C. Dean Metropoulos  
Ruth and Peter Metz Family  
Foundation  
W. Peter Metz  
Julie and Lance P. Meyerowich  
MFS Investment Management  
Vincent P. Migliore  
Marcia & Richard Mishaan  
MJ Gruber & Co.  
MJLF & Associates  
William A. Monness  
Moose Enterprises  
Karen Murray  
National Distribution Alliance,  
LLC  
Andrew Nawn  
Cindy E. Nelson  
NHL Foundation  
Open Society Institute  
Order of Ahepa Chapter 517  
John Paravalos  
Pearlgreen Corporation  
Perry Ellis International  
The Scalamandre Organization  
Pfizer Foundation Matching Gift  
Program  
Poten & Partners, Inc.  
Brian Quinn  
Mr. & Mrs. Laurence Radbell  
Randa Foundation  
The Reeves Foundation  
Regional Appraisal Associates, Inc.  
Reich & Tang Asset Management,  
LLC  
Brad Reiss  
RFR Realty LLC  
Robert Hollweg Grantor  
Charitable Lead Annuity Trust  
Michael E. Roemer  
Ronald McDonald House at the  
Maria Fareri Children's Hospital  
Royal Abstract of New York LLC  
Susan & Jack Rudin  
Marc Rudnet and Griswolds, Co.  
Sackler Hunt Foundation  
Wendy Schaps  
The Helen Schlaffer Foundation  
Trust  
Ira A. Schwartz  
Barbara A. Scott  
William R. Serpe  
Trevor Shaw  
Syed Sher  
Sherland & Farrington, Inc.  
Ms. Delia C. Brako &  
Mr. Chris A. Shumway  
Steven Siegel  
Sigerson Morrison  
Andrew Silverman  
Sandy & David Silverman  
Skanska USA Building, Inc.  
Society of Kastorians  
"Omonoia," Inc.  
Solitaire Creations Inc.  
Source Of Hope Foundation  
David Spain  
Bonita & Mitchell Speigel

Paul Sperber  
Judy Spiegel  
St. Ignatius Loyola Parochial  
School  
St. Pantaleimon of Andros Society  
Marie Stabile  
The Starker Family Foundation  
Jayne M. Stewart  
Stonex Corp  
The Summers Family Foundation  
Syska Hennessy Group  
TD Bank  
Adam Templeton  
The New York Community Trust  
The Training Associates  
Thomasarts, Inc.  
Transfiguration Kindergarten  
School  
The Travelers Companies, Inc.  
Stephanie Troisi  
Trump National Golf Club  
UBS  
United States Information  
Systems, Inc.  
Univision  
VIP International, Inc.  
James E. Vogel, CFA  
Sushil Wagle  
Walmart Foundation  
Michael & Leah Weisburg Family  
Foundation  
Richard Werder  
Nina & Gary Wexler  
Willkie Farr & Gallagher LLP  
Elizabeth Wintrich  
Eric and Jan Woglom  
Wood, Herron & Evans, L.L.P.  
Joseph L. Yasgur  
YMS Management Associates  
Kara Young

**\$1,000–\$2,499**

92nd Street Y Nursery School  
A M & G Waterproofing LLC  
Abelaki Fast Food Restaurant, Inc.  
ABKCO Music & Records  
Able Floor Service Inc.  
Amy Abrahams  
Mr. & Mrs. Michael Abrams  
Elizabeth Adams  
Mr. & Mrs. Henry E. Adams  
Advent Software, Inc.  
Affiliated Adjustment Group, Ltd.  
Aggressive Energy & Mechanical  
Group  
AIG Matching Grants Program  
David Alexanian  
Allcom  
Herbert A. Allen  
Mark E. Almeida  
American Apparel & Footwear  
Association  
American Express Workplace  
Giving  
American Express, Matching Gift  
American Fire Restoration, LLC  
American International Group  
Steven & Ann Ames  
Amigos Da Bicicleta

Karen & Christopher Amo  
Mr. & Mrs. Antigonos Anastasiou  
Angel on a Leash  
Anheuser-Busch Companies, Inc.  
AOL, LLC  
Apex Uniforms Inc.  
Bob Appel  
Bruce Arella  
Constance Aronson  
Pedro Arroyo  
Artisan of Leisure  
Astoria Cardiovascular Services,  
P.C.  
Beverly Atkins  
Dr. & Mrs. Fadi Attiyeh  
Brand Source  
Michael Azhadi  
B.A.C.C. Builders Inc.  
Ms. Wendy P. Bachman &  
Mr. Frederick M. Bachman  
Becky Banyasz  
Michael Bapis  
Bernice (Bunny) Barb  
Frederick W. Barney Jr.  
Ms. Nelida C. Barreto & Mr.  
Anthony Cardiello  
Sandra & David Barrett  
Peter Barry  
BC International Group, Inc.  
Enid L. Beal  
Stacey Bendet Eisner & Eric  
Eisner  
Berglass & Associates  
Jodi Bergman  
Ronny Bergman  
Madleine Berley  
Sheri Best  
Kathy Bierman  
Billy Hurricanes  
Chris A. Blackman  
BlackRock Matching Gift  
Program  
The Meredith B. Blaustein  
Cancer Foundation  
Paul Blum  
David Blumberg  
BNP Paribas North America, Inc.  
Leonard B. Bochner  
Kimberly Keating Bollenbach  
Scott Bommer  
Arthur Bosmans  
Bobbie & Mel Braun Charity  
Fund  
The Brearley School  
Nancy & Alan Brenner  
Andy Brettschneider  
Brillstein Entertainment Partners  
Broadway Exterminating Co.  
Bronx City Recycling Inc.  
Browning School-Parents  
Association  
Bub's Benefit  
Mary Jane & Alan Buhrke  
Building & Construction Trades  
Council of Greater New York  
Bulkley Dunton  
Kenneth J. Butler  
Michelle Caiola  
Karen & Doug Calby

Robert Calloun  
Cindy Callaway  
Camelot SI LLC  
Monsignor Robert E. Capaldi  
Capell, Barnett, Matalon &  
Schoenfeld LLP  
Robert Capone  
Capstead Mortgage Corporation  
Donald Carbone  
Cardoza Plumbing Corp.  
Carlow East Bar  
Kendall Carter  
Sue Carter  
Edward Cashman  
Jeff Cashman  
Caulfield's at Thompson  
Beverly Hills  
Dorando Cavallacci  
Center Sheet Metal  
Frank Cerisano  
Champion Metal & Glass, Inc.  
Ignatius Chiang  
Mr. & Mrs. Philip Christopher  
The CHS Group  
Chubb Group of Insurance  
Companies  
Churchill School  
CIT Group Inc (CIT)  
Warren Clamen  
Clarity Imaging Technologies Inc.  
Mark & Susan Cluster  
Club Med  
Bruce Cobern  
Coffee Distributing Corp.  
James E. Coffey  
Ann Coleman-Poll  
Alisa B. Coleman  
Mr. & Mrs. Mark Colm  
Combined Restaurant Interiors,  
Inc.  
The Community Foundation for  
the National Capital Region  
Component Assembly Systems Inc  
Conoco Phillips  
Consular Women's Club of  
New York  
Convent of the Sacred Heart  
Jonathan Cook  
Debbie Cooper  
Joel & Christine Cooperman  
Joan Coppotelli  
Gidon & Halit Coussin  
Neil Crespi  
Colin Crowley  
Robert Cucuzza  
Brian Curran  
Michael S. Curtis  
Cyber M@rketing Services, LLC  
D.F. King & Co.  
Julia & Michael Dailey  
Lauren Dameron  
Robert N. Dangremond  
Mr. & Mrs. Michael Daniel  
John Deangelo  
Jack Decicco  
Leigh & Michael DeFazio  
Nikki Demarnis  
D'Maris & Joseph Dempsey  
Frank Desiderio

Mark Devaney  
Isi Diaz, Anheuser-Busch  
Companies, Inc.  
DKN Ready Mix  
DKNY  
Marcia & Alan Docter  
Mariantonia & Thomas Dominic  
Mr. & Mrs. Michael Donahue  
Donald J. Fager & Associates  
The Doneger Group  
Mr. & Mrs. Justin B. Doran  
Mr. & Ms. Jeffrey S. Dorman  
Mary & Jeff Drake  
Muriel Drewitz  
DSS Corp.  
Duane Morris LLP  
Duce Construction Corporation  
Christopher J. Duffy  
Mr. & Mrs. Joseph Dugan  
Mr. & Mrs. Timothy Dugan, Jr.  
Robert A. Dunn, Jr.  
Margaret M. Dwan  
Dorothy Dweck  
Libby Edelman  
Robert & Gail Edelstein  
Foundation  
Ms. & Mr. Teresa Eggers  
Emerald Dry Cleaning  
The Epiphany School  
Epstein Becker & Green, P.C.  
Mr. & Mrs. David Erickson  
David Erman  
Robert Christopher C. Errico  
John S. Erwin  
ESPN, Inc.  
Every Supply Co., Inc.  
Extended Home Care  
Carol Falcinelli  
John Fanburg  
Gloria and Hilliard Farber  
Foundation  
Jennifer Farber  
Farm Credit Systems  
Anna & Mel Farrell  
Father's Day/Mother's Day  
Council  
FBR Group  
Federal Law Enforcement  
Foundation  
Larry Feinberg Family Foundation  
Lee Feld  
Alan J. Feldman  
Gary Felsher  
Thomas A. Fenniman  
Victoria Ferrara  
Wayne Fialo  
Fidelity Brokerage Services LLC  
Chris B. Fields  
Marcy L. Finestone  
Finnegan's Wake  
Alexander Fischbein Foundation  
Fisher Brothers Foundation Inc.  
Adam Fisher  
Five Star Electric Corp.  
Charles Flateman  
Alan Fleisher  
Andrew J. Flinn  
Katherine G. Flynn  
Harold Ford



Brian Forgione Foundation  
 Dominick Fornabaio  
 The Charles Evans Foundation  
 Fox Rothschild, LLP  
 John Fox  
 Mr. & Mrs. Joel M. Frank  
 Frankel Family Foundation  
 Martin Franken  
 Fred Geller Electrical, Inc.  
 William Freda  
 Frederic Fekkai  
 Ilene & Sanford Freiman  
 Fresh Meadows Mechanical Corp.  
 Edward Friedman  
 The Lawrence & Anne Frisman  
 Foundation  
 The David & Shirley Fromer  
 Foundation  
 Furman Foundation  
 Futura Builders Group, Inc.  
 Theodore D. Gaeta  
 Peter Gallagher  
 George Garcia  
 Brooke Garden  
 Mr. & Mrs. Jason Garrett  
 Maureen Geary  
 Gemstar Construction  
 Corporation  
 Jeff Gennette  
 Gensler  
 The Mary George Foundation  
 The George Marneris Scholarship  
 Fund  
 Constantine Georgiopoulos  
 Richard Gess  
 Sophia Gianni  
 GiantKids  
 Judy & David A. Gibbs  
 Judy & Rod Gilbert  
 Girl Scout Council of Greater  
 New York, Inc Troop 3451  
 The Glickenhau Foundation  
 GNY Insurance Companies  
 John Godina  
 Virginia Goebel  
 Roberta Goin  
 Emanuel R. Gold  
 Mary Goldberg  
 Michael Goldberg  
 Laurie & Jeffrey Goldberger  
 Ms. Tracie Golding &  
 Mr. Brian Gerson  
 Gary Goldring  
 Carl Goldstein  
 Michael Gonnella  
 Ian Goodman  
 Elizabeth J. Goor  
 Rob Goralnick  
 Arthur Gordon  
 Michael Gordon  
 Richard Gordon, CPA  
 Gotham Roots Orchestra  
 Gourvitz Communications  
 Eugene and Emily Grant Family  
 Foundation  
 Joseph Graziadei  
 Great Union Corp.  
 Greek Cathedral  
 The Greek School of Plato  
 Green Mountain Coffee Roasters  
 Mark M. Greenblatt  
 Arthur Grubert  
 GSX Inc.  
 Leo Guthart  
 GXS Inc.  
 H and K Global Systems  
 Martin Halbfinger  
 Hallmark Cards, Inc.  
 Daniel Halvey  
 Hammerstone Inc.  
 Thomas L. Hammons  
 Jenny Hansen  
 Harbor Group Management Co.  
 Harley Davidson  
 Harmony Trading Co.  
 Benjamin Harris  
 Harrison High School  
 The Hartford Financial Services  
 Group  
 Paul Hatch  
 Lonnie Haymes-Schwartz  
 Hellenic American Bankers  
 Assoc. Inc.  
 The Helmar Foundation  
 Lynn Henderson  
 Mr. & Mrs. John Hendrix  
 Mary Anne Herrick  
 The Hewitt School  
 High School for Law, Advocacy,  
 & Commerce  
 Hilal  
 Ann Hill  
 Himan Brown Charitable Trust  
 Dr. Alice & Mr. Albert Ho  
 The Hoffman Family Charitable  
 Fund  
 Donald Hofmann  
 Babette S. Hollister  
 Lisa A. Hollman  
 Holy Cross School  
 Holy Trinity Greek Orthodox  
 Church PTA  
 Holy Trinity (New Rochelle, NY)  
 Hongda Garments  
 Kara P. Hood  
 George Hornig  
 Suzanna C. Houston  
 HSBC Private Bank  
 Hub International Northeast  
 Limited  
 Linda A. Huett  
 Jon Hunt  
 Peter Hurley  
 Kyle Hutchinson  
 Barry Hyman  
 Edward S. Hyman, Jr.  
 Hyperion Group, LLC  
 HyperLink  
 ISI Group  
 J Squared Press Inc.  
 Jack Resnick & Sons Inc.  
 Patricia Jack  
 Mr. & Mrs. Alan L. Jacobs  
 Shirley Jacobs  
 Jacoby Electric Corp.  
 The Jaffe Family Foundation  
 JCC Manhattab Knit Club  
 Jean Baptiste High School  
 Joan Jedell  
 Mr. & Mrs. Michael Jeffries  
 Emiley Jellie  
 Jet Capital Investors, LP  
 JetBlue Airways Corp.  
 JMM Consulting LLC  
 John Hung Foundation  
 Johnson & Johnson  
 Andrew J. Jonas  
 Bobby Jones  
 Jordan Cooper & Associates Inc.  
 Robert Josephberg, M.D.  
 The Joy of St. Paraskevi  
 JPMorgan Chase  
 Mr. & Mrs. Jeffrey Julien  
 Jackie Justice  
 Kabbalah Centre NY  
 Miriam & John Kalfa  
 Khalil Kanaan  
 Jerome Kane  
 Charles H. Kaplan  
 Barbaros Karaahmetoglu  
 Baron Billy Karamouzis  
 Mr. & Mrs. Michael Karsch  
 Raymond E. Kassar  
 Vasilios Katsanos  
 Nancy Lee Katz  
 Steven W. Katz  
 George S. Kaufmann  
 Peter R. & Cynthia K. Kellogg  
 Foundation  
 Sean Kelly  
 Jerome L. Kelton  
 Kentone International Ltd.  
 Joan Kessel  
 John Kessler  
 Kevin Davis Insurance Services  
 Jerry Keyes  
 Peter A. Kindler  
 Kirkland & Ellis Foundation  
 Kirkland & Ellis LLP  
 Mr. Stephen Kitching/GKFO, LLC  
 David S. Klaffer  
 Ms. Sara Herbert &  
 Mr. Barry Klarberg  
 Shirley Klein  
 Judy Kloner  
 Cynthia & Robert Knakal  
 Knoll  
 Ms. Bonnie Fox &  
 Mr. Stuart Koenig  
 John V. Koerber  
 Peter Koukouras  
 Dave Kozel  
 Jeremy Kramer  
 Martin Kravet  
 Peter Kreatsoulas  
 Joseph R. Krist  
 Syndee Kurz  
 Eparhia Kynourias  
 La Prairie  
 La-Z-Boy  
 Peter and Deborah Lamm  
 Foundation  
 Land Appliance Services Inc.  
 Mr. & Mrs. Robert Lange  
 Mr. & Mrs. Jeffrey S. Lanning  
 Dr. Michael Laquaglia  
 Angela Larson  
 Susan Lawrence  
 Melissa S. Lawson  
 Lazard Capital Markets LLC  
 Vi Le  
 Leadership 100  
 Leardon Boiler Works, Inc.  
 Betty G. Leitner  
 Lend Lease  
 David LePorin  
 David Lessing  
 Laurie Levinson  
 Laila Levitas  
 Mr. & Mrs. Bruce Levy  
 Lewis Brandeis High School  
 Marjorie Riche Lewis  
 Licensing Compliance Group, Inc.  
 Paula Liveris  
 Local Union #1556 of UBCJA  
 Alan N. Locker  
 Loeb & Loeb LLP  
 Dr. & Mrs. Alexander E. Loscialpo  
 Lucille Khornak Photography  
 Mr. & Mrs. Thomas M. Luddy  
 Ken MacKenzie  
 Sean Mackin  
 Maersk Line  
 Magaschoni  
 Magna-Dry Carpet Cleaners, Inc.  
 Jeanne Magram  
 Tara Maguire  
 Mr. & Ms. Maguire  
 Timothy J. Mahoney, Jr.  
 Malkin Fund, Inc.  
 Malwa Group  
 Eileen Mancera  
 Judith Mandrakos  
 Mr. & Mrs. Anthony Manganaro  
 Manhattan High School for Girls  
 Ann T. Mara  
 Maragos Painting LLC  
 Marathon Bank/Investors  
 Bancorp Inc.  
 Marc Jacobs International  
 Christine Marchi  
 Dari J. Marder  
 Mr. & Mrs. James Margarites  
 Urim Marke  
 Marketing Management Group  
 Marks Paneth & Shron LLP  
 Mohit Marria  
 George Marshall  
 Matthew & Donna Martelli  
 Dave Martin  
 Liz Martinez  
 Frank Martorana  
 Gretchen & Paul J. Massey, Jr.  
 MasterCard Worldwide  
 Mr. & Mrs. James R. Matthews  
 John A. Mauro  
 Patrick Mc Gowan  
 Susan & Lowell McAdam  
 Lindsay McCrum  
 Heather McDonald  
 Mr. & Mrs. Colin McGahren  
 Dennis M. McGarry

The McGraw Hill Companies  
 Mr. & Mrs. John J. McKenna  
 David McShane  
 Mr. & Mrs. Robert Mead  
 Megan Medica  
 The Men's Wearhouse  
 Merck Partnership Matching for  
 Giving  
 Merrill Lynch  
 MetLife  
 Jeffery Meyer  
 MFA Financial, Inc.  
 Middle Bay Country Club  
 Camilo Miguel Jr.  
 Millenium High School  
 Asa Miller  
 Robert C. Miller  
 Marianne & Steven Mills  
 Spiros Milonas  
 Marni Mirman  
 Modern Empire Inc.  
 James Molloy  
 Moody's Foundation  
 James Mooney  
 Mary B. Moore  
 Carl Morales  
 David Moran  
 Moretrench American  
 Corporation  
 Beth & Kenneth Motschwiller  
 Tara Muller  
 Michael T. Mulroe  
 John Mulvihill  
 Mr. & Mrs. Michael J. Murphy  
 Michelle Murphy  
 Thomas F. Murphy  
 Hari Muthuswamy  
 Mystic Company  
 Bruce H. Nagel  
 Frank Nakano  
 NAON  
 Joyce Nastasi  
 National Interiors Inc.  
 The Natori Company  
 Nelson Air Device Corp.  
 Neptune Mechanical Inc.  
 Craig Nerenberg  
 New Jersey Laborers' Health &  
 Safety Fund  
 New Providence Asset  
 Management LP  
 New York Building Congress  
 New York City Museum School  
 Harold Newman  
 Diane Allen Nixon  
 North American Shippers  
 Association, Inc.  
 Mr. & Mrs. Harold S. Novikoff  
 NTT Data  
 Joe O'Connor  
 Regina O'Connor  
 Octone Records  
 Morris W. Offit  
 OHL Global Freight Mgt. &  
 Logistics  
 Therese P. Okoumou  
 Oliver B. Merlyn Foundation  
 Lois Olivera  
 John D. Olson

Onguard Pest Control  
 Allen Oppici  
 Owen Steel Company, Inc.  
 P K Management  
 P.S. 183  
 P.S. 198  
 P.S. 199  
 Barbara Pacifico  
 Kirtna Pai  
 Kirk Palmer  
 Arthur Papas  
 Par Plumbing Co.  
 Park Avenue Christian Day School  
 Rupal Patel  
 Mr. & Mrs. William C. Patterson  
 Mr. & Mrs. Frank Pellegrino  
 Dr. Antonio Perez  
 Perfect Beauty  
 Brian Petix  
 George Petras  
 Ken Petschauer  
 Tricia Peyser  
 Amy Phelan  
 Alexander Phillips  
 Piagui  
 Pine River Domestic Management  
 Plumbers Local Union #1  
 William Poll  
 David S. Portny  
 Ron Posner  
 Steve Powel  
 Jeff Pravato  
 Progressive Society of Analipsis  
 Trihionidos  
 Property Resources Corp.  
 Richard Propper  
 Prudential Foundation Matching  
 Gifts  
 Pryor Cashman LLP  
 Pythian Sisters  
 Quilters of Color Network of  
 New York  
 Henry M. Quincannon, Jr.  
 Peter J. Quinn  
 RAD & D'Aprile  
 Rael Automatic Sprinkler  
 Company, Inc.  
 Rainbow Gate International  
 Ramac Corporation  
 Ramaz Middle School  
 Stephen Ravosa  
 RB International Finance  
 RCS Logistics Inc.  
 Rebecca School  
 Andreas Regenauer  
 Regis High School  
 Reiss Family Foundation  
 Sydney Reynolds  
 Lou A. Riccio  
 Mr. & Mrs. H.V. Richardson  
 Peter C. Richardson  
 Rish Capital Advisors LLC  
 Andrea Rizzo Foundation  
 L.P. Rizzuto  
 Roanoke Sand & Gravel Corp.  
 Lee Robbins  
 Robert Derector Associates  
 Rodeph Sholom Day School  
 Deborah Rodgers

Ariel E. Rodriguez  
 Anna Rodriques  
 Diane Romano  
 Romark Logistics  
 Ronald McDonald House  
 Charities of San Antonio, TX  
 Rose Aiello Associates  
 Rose Demolition & Carting Inc.  
 Chava Rose  
 Hilary & Wilbur Ross  
 Paul Ross  
 Chris Rossetti  
 Michael Rossetti  
 Paul Rosten  
 Robert Rubin  
 Running Deer Foundation  
 Russell Reynolds Associates  
 Helena Russo  
 The Rust Family Foundation  
 S3 Partners  
 Ramy Saad  
 Sacred Heart of Jesus School  
 Mr. & Mrs. Stephen Sadove  
 Peter Samaha  
 Mr. & Mrs. John Samuelson  
 Hernan Sanchez  
 John Savarese  
 Wendy Schilling  
 Ruth Schlossberg  
 Mr. & Mrs. Marc F. Schneider  
 Eugene Schneur  
 Cindy Schreiner  
 Mr. & Mrs. Ken Schulman  
 Elaine Schulze  
 SCK Sound Design Inc.  
 Dominick Scotto  
 Gail & Chris Scudellari  
 Theresa Scudero  
 Seacausus Board of Education  
 Mr. & Mrs. Greg Sephton  
 Seward & Kissel  
 Shapiro Forman  
 Sharp Hill Capital LLC  
 Shearson Group Inc.  
 Janet Sheiner  
 Shenzhen Textile (HK) Limited  
 Martin Sherlock  
 Sherman & Gordon, P.C.  
 Mr. and Mrs. David Sherman  
 Sherson Group  
 William W. Sherwood  
 Mr. & Mrs. Yehuda Shmidman  
 Carrie Shumway  
 Siemens  
 Sierra Consulting Group  
 Karenlee M. Sigler  
 Signature Bank  
 Sills Cummis & Gross PC  
 Siman Media Works Inc.  
 David Simkins  
 Sandi & Isaac Simon  
 Ray Simon  
 Vinayak Singh  
 Mr. & Mrs. Thomas J. Skea  
 Howard Sloan  
 Smith School  
 Damien Smith  
 Dorothy L. Smith  
 Mr. & Mrs. James Smith

Elaine Smithline  
 Ellen Smoller  
 Brandon T. Snider  
 The Sobel Family Foundation  
 Dr. Robert C. & Tina Sohn  
 Foundation  
 Susan Sosnick  
 Sotheby's  
 Kenneth M. Spence  
 Barry Spiegel  
 Judy Spiegel  
 Steven L. Sprung  
 St. Ignatius Loyola Parochial  
 School  
 St. Irene's Ladies Philoptochos  
 Audrey & Richard Stadin  
 Lee Stahl & Toby Stahl-Maranga  
 Charitable Foundation  
 Starion Energy Inc.  
 Stark & Stark  
 Christopher C. Stavrou  
 Linda Sterling  
 David Stern  
 Jennifer & David Stockman  
 Daniel E. Stoller  
 Stonehenge Restoration, Inc.  
 STV, Inc.  
 David Suk  
 Summit Brokerage Services  
 Suntrust Robinson Humphrey  
 William Susman  
 Brian Suth  
 Swank Inc.  
 Theresa & Joseph Sweeney  
 Sweet Jane's  
 Mr. & Mrs. Allen Swerdlick  
 Syska Hennessy Group  
 Tane Digital Video, Inc.  
 Robert F. Tannenhauser  
 Andrew Tarshis  
 Scott L. Tartaglia  
 John P. Tavlarios  
 Harry Tawil  
 Shelly & Peter Taylor  
 Ted Moudis Associates  
 TEI  
 Jordana Tepper  
 Teradata  
 Third Dimention Apparel Co.  
 Robert E. Thompson, Sr.  
 Thunder Jackson's  
 Torin Associates, Inc.  
 Town School  
 Trachtenberg Rodes & Friedberg  
 LLP  
 Dr. Russell F. Trahan, PC  
 Travel Dynamics International  
 Elizabeth Trebus  
 Trevor Day School  
 Triumph Construction  
 Gaurang Trivedi  
 True & Associates  
 Tuchman, Korngold, Weiss,  
 Lippman & Gelles, LLP  
 Tudor Investment Corporation  
 Mr. & Mrs. Steven Tugentman  
 Edward D. Turen  
 Tyco  
 Elizabeth Tyndale

G. Tzanidakis  
UBS Foundation USA Matching  
Gift Program  
Unigraphic  
United Way  
Urab Assembly School of  
Business for Young Women  
Urban Foundation-Engineering,  
LLC  
Uva Wine Bar & Restaurant  
V. Disalvo Contracting Co., Inc.  
Mr. & Mrs. Sotirios Vahaviolos  
Valiance Partners, Inc.  
Maureen & Steven Van Zandt  
Rosanna Veras  
Anthony Victor  
Meredith Vieira  
Dr. & Mrs. Nicholas Violino  
Diana & Dick Virgo  
Vornado Realty Trust  
Wagner Middle School  
Karel Wahrsager  
Kathy C. Wall  
Daniel L. Wallace  
The E. Walsh Management Corp.  
Ms. Diane Schierlitz &  
Mr. Eric Walsh  
William G. Walters Foundation  
Barbara Walters  
Shuk W. Wan  
Jeanne M. Ward  
Claude Wasserstein  
Waterman 400 Park Associates  
We Care Blankets  
Jill Webb  
Dr. Michael A. Weiner  
Libby & Allen Weingarten  
Mr. & Mrs. Mark Weinstein  
Roberta Weisburger  
Julie & Michael G. Weiser  
Westchester-Putnam Plumbers  
& Steamfitters Industry  
Westwood Cinema Corp  
Kate R. Whitney  
The Wilf Family Foundation  
Wilfie & Nell  
Willis North America Inc.  
Susan & Eric C. Wiseman  
WJL Equities Corp.  
Suzanne Wolden  
Elizabeth & Edward Wolfe  
Kurt J. Wolfgruber  
Andrea Woltmann  
Woodard Family Foundation  
WTC Properties  
John Xikis  
The Yaspan Unterberg Foundation  
Steven M. Yedvarb  
Betty Young  
Cindy Zahn  
Christa Zambardino  
Zaskorski & Notaro Architects,  
AIA, LLP  
David S. Zemel  
Chaohui Zhang  
Alejandro Zubillaga  
Rene Zweig

**\$500-999**  
20th Century Fox  
212 Media Group, Inc.  
75 East End Owners, Inc.  
A To Z Perfection Maintenance  
Corp.  
Jennifer Abate  
Ross Abelow  
Adam Rose Foundation  
Beth Adams  
Gregory Adams  
Michelle Adams  
Angela Adderley  
Marcelo Afonso  
Raffi Ajamian  
Barry Albano  
Ellen Alderdice  
Alfred Sanzari Enterprises  
Local 1364  
Allison + Partners  
Alpha Delta Phi  
Jim Altadonna  
American Youth Dance Theater  
Mr. & Mrs. Mark Anderson  
Richard T. Anderson  
Dr. Theodora Andreopoulos  
Helen Angelakos  
Andrew Anik  
Leah Anthony  
Apollo Management  
Gina Argento-Ciafone  
Ari Group Inc  
Jennifer Ariosto  
Armonk Veterinary Hospital  
Arthur Willams Industries LLC  
Astoria Federal Savings  
AXA Foundation Matching  
Mark Axelowitz  
Jeffrey Bacidore  
Anna Backer  
Daniel Badillo  
Bailey, Haskell and Lalonde  
Agency  
Sheryl Baily  
Veronica Baker  
Myra Barcan  
Stephen Barker  
Sylvan M. Barnet, Jr.  
Vickery Barnett  
Matthew Baron  
Geoff Barrett  
Keith Barrett  
Chandler Bates, Jr.  
Fran Baudone  
John Bazdekis  
BC International Group, Inc.  
Bed, Bath & Beyond  
Susan & Mario Belardino  
Gina Bellino  
Mr. & Mrs. Anthony Belluzzi  
Benefit Consulting Group  
Benevolent Society Ladies of  
Kastoria  
John Bennardo  
Benzel Busch Motor Car  
Corporation  
Benziger Family Winery  
Judith A. Bergeron  
Kenneth Berkson

Mark Berman  
Mr. & Mrs. Steven Bernstein  
Maria A. Beuk  
Rob Bier  
John A. Binko  
Lewis Black  
Bonnie Blake  
Nancy K. & T. Blaney  
David Blanksteen  
Rick Blatstein  
Charlotte Blechman  
Blue Sky Design, Inc.  
Melvyn H. Blum  
Hilda Boas  
Bodywerx Personal Training  
Jo Etta Bokser  
Maribel Bolivar  
Keith Boller  
Ernest Bonifazio  
Dr. & Mrs. Jeffrey Borer  
Tara & Agnes Boss  
Dorthea Bossio  
John Bougiamas  
Nicholas J. Bouras  
Ondrae Bracey  
Irina & Harry Brandler  
John K. Braniff  
Helen Braun  
Breaking Solutions Inc.  
Virginia Breen  
Roberta L. Breitbart  
Nancy Brickley  
Elizabeth Brill  
Bristol-Myers Squibb Foundation-  
Matching Gift Program  
Broadway Stages LTD  
Felicia Brower  
Jennifer Brown  
William Browne  
Dr. Michael Bruno  
Bert Bryan  
Frederick Bryan  
Thomas Buell  
Oleg Buiko  
Gary V. Bumedner  
Burberry  
Mr. & Mrs. Brian Burchell  
Michael Burke  
Harriet & Tom Burnett  
Steven Bushee  
Mr. & Mrs. Timothy Butrie  
Mildred Buydos  
C & I Mechanical Maintenance  
Corp.  
Susan Cagen  
Cameron H. Calder  
Jeffrey Callahan  
Ms. Patricia A. Goggin &  
Mr. Scott P. Callahan  
Jef Campion  
Eileen & Joseph Candella, Sr.  
Chris Canfield  
Alexander Cannon  
Mary Capaldi  
John Capano  
Joseph Capper  
Dominic Carella  
Caring Kids Creating Cures  
Mr. & Mrs. Stephen Carlino

Raymond K. Carreau  
Mr. & Mrs. Joseph F. Carrillo  
Carullo Construction Corp.  
Paul Casey  
Castle Oil Corporation  
Frank Caulson  
Kim Cavaliere  
Central Iron & Metal Co.  
Century Elevator Maintenance  
Corp.  
Mr. & Mrs. Nelson J. Chai  
Rikki Charles  
Mr. & Mrs. Constantin Chassapis  
Janet Chen  
Harlan B. Cherniak  
Scott Chesky  
Frank Chiarello  
Wing L. Choi  
Stavroula Christakos  
Victoria Christian  
Theresa Christie  
Alexander Chudnoff  
Coleman Church  
Emily Ciardullo  
Cine Magnetics, Inc.  
Jordan M. Ciner  
Rick Cisneros  
Cives Steel Company  
Clark Construction Corp.  
Maria Clark  
Sarah Coe  
Mr. & Mrs. Gary Cohen  
Abbie Cole  
Edmund Coleman  
Ms. & Mr. Clemencia C.  
Colon-Neyland  
Joanne Colonna  
Kalliopi Karkambasis  
Robert Composto  
P.O. Patrick Conley  
James A. Connelly  
Mr. & Mrs. Frank Considine  
Consigliere Brand Capital LLC  
Michael Conti  
Mr. & Mrs. Andrew Cooper  
Daniel Cooper  
Copen Associates Inc.  
Anne & Michael Corbosiero  
Eugene Corcoran  
Cornick Garber & Sandler LLP  
Mr. & Mrs. James M. Cotter  
Creative Services  
Cretan Womens Association  
"Pasiphae"  
James Croak & Tomoe Ito  
Gay Cropper  
Cross Fire & Security Co., Inc.  
Geri Cuile  
Gerard Cunningham  
Amy Cureton  
Carlo Cuzzi  
Nicholas D'Amato  
Mr. & Mrs. Arthur D'Angelo  
Edith Dackow  
Susan Dacks  
Michael Darcy  
Michael J. Darling  
James David  
Davinci Virtual LLC



Michael Davis  
Sandra Davis  
Nicholas De Martini  
Patricia A. Decker  
Michael DeCotiis  
Barbara Deichman  
Marc Del Gaudio  
DeDe & David Del Monte  
DeLesia Construction  
Maria Demas  
Megan Demetros  
William Demichelis  
Patricia Demins  
Greg Denizard  
Jill Dessau  
Eric Diamond  
Jeffrey Diamond  
Megs DiDario  
Frederick G. Diehl  
Marie A. DiRocco  
Ronald E. Dixon  
Meg Dockery  
Dola Electrical Co., Inc.  
Renata Dolezal  
James Donaghy  
Kimberly & Peter Donaghy  
Doncor, Inc.  
Donna Karan International  
Matthew Doull  
Du Jour  
Francis K. Duane  
Robert Dubuss  
DudeRanch.com  
Duke Properties  
Dunne Family  
Patrick V. Dunne  
Durr Mechanical Construction  
Inc.  
Mr. & Mrs. David A. Dworsky  
Mr. & Mrs. Terry E. Ebert  
Edgemont UFSO at Geenburgh  
Edie Parker  
Wallace Eggers  
Steven M. Eick  
Brad Elders  
Marta & David Elders  
Eltech Industries, Inc.  
Adam Englander  
Equinox  
Mr. & Mrs. Arthur Erk  
Etna Contracting Inc.  
Lior Evan  
Experian Interactive Media  
Jason Faller, M.D.  
Madeleine Farinet  
Mr. & Mrs. Arthur Faverio  
Mr. & Mrs. Andrew Fechter  
Scott Feiner  
John Fenn  
Mary Fennelly  
The Andrew Ferguson  
Mr. & Mrs. Bruce Ferland  
The Feuerring Foundation  
Financo, LLC  
Finneran Family Foundation  
Victoria & Matthew Finnerty  
Jayne Firtell  
Mark Fischer  
Mr. & Mrs. Martin Fischer

Eric Fischl  
Fleetwood Lock & Alarm Co., Inc.  
Catherine & Nathan Forbes  
Theresa Ford  
Eunice K. & Milton Forman  
Jeanne Forster  
Francky L'Official Salon  
Dr. Paul J. Frank  
Georgia Frasci  
Freeland & Associates, Inc.  
Shirley Fried  
Harriet Friedman  
John Frost  
Allison & Nathan Gantcher  
Garfield Development Corp  
Mr. & Mrs. George Garfunkel  
Kimberly Garner  
Dr. Alan Garten  
Gateway Security Service, Inc.  
Suzanne Gavin  
GE Foundation Matching Gift  
Program  
Karen Gehrig  
Ken Geiger  
Jill Geldbach  
Gender Mannequins Inc.  
General Atlantic  
Joseph Genovese  
James George  
Gerber Group  
Mr. & Mrs. Scott Gerber  
Mr. & Mrs. Jason Gere  
Geros Tou Morea, Inc.  
Gianni Giambrone Landscaping  
Services  
Margaret A. Gilliam  
Give With Liberty  
Glackens Bar & Grill Corp.  
Cathy Glaser  
GlaxoSmithKline Foundation  
Glenwood Management Corp.  
GoDaddy.com  
Megan & Bill Goeller  
Timothy Gold  
Laurie & Robert Goldberg  
Martha Marti A. Golden-  
Greenberg, Ph.D.  
Izzy Goldreich  
Ellen Goldsmith  
Adam Goldstein  
Bruce Goldstein  
Hope Goldstein  
Mindy Goldstein  
Joann Goltermann  
Goodhart National Gorman  
Agency, Inc.  
Joan & Donald Gordon  
Janet G. Gorman  
Gould Shenfeld Foundation  
Jane M. Gould  
Strokos Gourmet  
Alison Grambs  
Grand Prix NY  
Lillian Grath-Nole  
Greek American Homeowners  
Association of NY, Inc  
Alyssa & Clifford Greenberg  
Roberta & Arnold Greenberg  
Seth A. Greenberg

Lisa Greenblatt  
Greenlight Capital Inc.  
Rudolf Greiner  
Joseph J. Grieco  
Mr. & Mrs. Kevin Griffin  
Mr. & Mrs. Richard Grissinger  
Janet Grove  
Patti & George Grunebaum  
Donna Guiliano  
Gurney's Inn Resort & Spa  
Bernie Gutierrez  
David Gutierrez  
H&K International  
Barry Haberman  
Philippe Hachache  
Mrs. Paul Hallingby  
Mary Hamilton  
Fern Hammond  
Tara Hampton  
Harbor Electric Fabrication &  
Tools Inc.  
Kersi Harda  
Herbert A. Hardt, CFA  
Gordon & Lillian Hardy  
Donald Harris  
Conor Hartnett  
Drs. Marvin & Joyce A. Hartstein  
Constance C. Harvey  
James D. Harvey  
Stavros Haviaras  
Nancy Hayward  
HBO  
John J. Healy  
Molly Heines  
Heir Finders, LLC  
Hellenic American Leadership  
Council  
Hellenic Orthodox Community  
of the Bronx  
Mr. & Mrs. Michael Heller  
Mark Herrmann  
William H. Heyman  
Hibernian Wood Design  
Mindy Higger  
Hirsch  
Robert Hitschew  
HMP Communications  
Rick Hoffman  
Hogs & Heifers, Inc  
James W. Holmes  
Holy Name Society of N.Y. P. D.  
Br. 175  
Holy Trinity (Westfield, NJ)  
Mark A. Hopkins & Family  
Joseph Hornstein  
Marie & Richard Hornstein  
Joel Horowitz  
Anthony S. Hoyt  
Chyihung Hsu  
Edwin Hu  
Michael A. Hurler  
Michael Hurley  
Peter Hurley  
Hutchinson Metro Center  
I BUSS -Allan Uniform Co. Inc.  
Jean M. Iannucci  
Mr. & Mrs. Mark D. Iannucci  
James Imperiale

Int'l Assoc. of Bridge, Structural  
Ornamental and Reinforcing  
Engineers  
Interface Communications, Inc.  
International Union of Operating  
Engineers Local 891  
Joseph A. Ippolito  
Island Channel Realty  
Isseks Bros, Inc.  
Masayoshi Itoh  
J. Gurwin Foundation  
J. McLaughlin  
Jeffrey Jacob  
Jacobowitz Chessed Fund  
Mr. & Mrs. Gregory W. Jacobs  
Kathleen Jankosky  
Jaral Management Corp  
Linda A. Jenkins  
Liza Jimenez  
The Joelsson Foundation  
Joey Puccio and BK-7 Sanitation  
Staff  
John B. Lovette & Associates Ltd  
Johnson Company, Inc.  
Eartha & Stanley Johnson  
Dorothy P. Jordan  
Joro Carting Inc.  
JPMorgan Chase & Co. Employee  
Giving Campaign  
Julien Cellot Foundation, Inc.  
Cheryl Kahanec  
Mr. & Mrs. Richard Kahn  
Dennis P. Kane  
Jerome Kane  
Marilyn Kane  
Mrs. & Mr. Marla Kaplowitz  
Rt. Rev. Bishop Philotheos  
Karamitsos  
Philotheos Karamitsos  
Spyros Karellas  
Ruth E. Karplus  
Heather & Jonathan Katz  
Patricia Kelemen  
The Keller Family  
Anne & John Kelly  
Robert Kerschbaum  
Samuel Kitive  
Doug Ketterer  
Amanda & Samuel Khalil  
Sean Kilduff  
Warren Kimber, Jr.  
Karen Kirk  
Susan Kissane  
Mr. & Mrs. Larry Kittelberger  
Martin P. Klein  
Stephen Kliegerman  
Sal Koci  
Paul Konsig  
Erick Kontogiannis  
Mindy Kopit  
Ellen & Robert Korval  
John Kosich  
Patrick Kotary  
Kiki Koutrakos  
Esther Koven  
Rae Krelitz  
Sally & Steven Kroll  
Meg Lachance

Ladies Philoptochos of Holy Trinity  
Ladies Philoptochos Society of Holy Trinity G-O Church  
Ladies Philoptochos Society of Holy Trinity  
Lafer Management Corp.  
Mario LaGuardia  
Lawrence Laiken  
Mr. & Mrs. Stephen Laird  
Lakehurst Dental  
Mr. & Mrs. Paul Lambert  
Robyn F. Landow  
Nancy & Jeffrey Lane  
William G. Laney  
David Langlois  
Anastasios Lazarakis  
Matthew Lederman  
Mr. & Mrs. Arthur Lee  
Brian Leetch  
James LeFrak  
Ronald Lefton  
John P. Leib  
Mr. & Mrs. Steven Leibow  
Craig Leiderman  
Gregory D. Lellouche  
Laura Lenihan  
Adeline Lepore  
David Lerner  
David Lester  
David Levin  
Bruce Levine  
Charles J. Levy  
Sylvia Lieb  
Dorothy Lill  
Lauren Lilley  
Debra Lindsay  
Wen Ling  
Mr. & Mrs. John D. Lipscomb  
David J. Lipson  
Michael Liss  
LIU Brooklyn Campus - Hellenic Club  
Darlene Lord  
Stefano Loretto  
Louis Shiffman Electric  
Mr. & Mrs. John Low  
Beverly Lukaszewski  
Richard Lynch  
M & J Electrical Contractors Corp  
Mr. & Mrs. Donald Mackinnon  
Mr. & Mrs. Francis MacNamara  
Donna Madafferi-Brown  
Diane Mager  
Majestic Theatre  
Evangelia Makkos  
Julia Makris  
Carole Mandel  
Manhattan Mechanical Contractors, Inc.  
Richard Mannon  
Lena Maracich  
Antoinette Maraldi  
Marathon National Bank Of New York  
Mark Moran Solutions LLC  
Betty Marks

John Mason  
Matell Contracting Co, Inc.  
Michael Mathis  
Mathrakian Society of America, Inc.  
John R. Matteson  
Susan J. Matula  
Marilyn Matysuk  
Tracy McAdams  
Timothy McAlindin  
Diana McCarty  
Timothy McDougald  
McFar Contractors, Inc.  
Kimberly M. McGeever  
Mina & Christian McKiernan  
Michael W.M cMahon  
William McRaith  
Penny Mendelsohn  
Elliott Merck  
Matthew V.M erola  
Edythe & Robert Merritt  
Robert Messerschmidt  
Lori Messina  
Marie Meyer  
Meyner and Landis LLP  
Alice & Lorne Michaels  
Sarah A. Michels  
Micron General Contractors  
Midtown Preservation, P.C.  
Milbrook Properties, Ltd.  
John Millar  
Mr. & Mrs. Don Miller  
Nancy & John Miller  
Ms. Millie Viqueira & Mr. Steve Miller  
Marni Mirman  
Mixed Greens  
Jose Mojica  
Monitor Company Group, L.P.  
Monkey Bar  
Raymond Moran  
Thomas J. Moran  
Dulayne Morgan  
Howard Morgan  
Louis G. Morin  
Jonathan Morrison  
Anne Mott  
Mr. & Mrs. Steve Zafiris  
Paula J. Mueller  
Theresa Mullan  
Mundo Media  
W. Fordham Murdy  
Diane Fitzmyer Murphy  
Sallye Murphy  
Michael Murray  
Mysore Nagaraja  
NATO Of New Jersey  
Mr. & Mrs. Alon Neches  
Mark Neisser  
Kathleen Nemeth  
New Jersey Devils  
New York Life Insurance Co.  
New Yorker Wholesale Bagels, Inc.  
Gail Newell  
Laurie H. Newitz  
Anastasia Nicholas  
Mr. & Mrs. Richard Nicotra  
Debra Niebergall  
Michael A. Nigro

Northeast Hardware Specialties Inc.  
Jim Norton  
NYS Council on Leadership and Student Activities  
James O'Brien  
Mr. & Mrs. Michael T. Obalde  
Mr. & Mrs. Otto G. Obermaier  
Ocean Networks Inc.  
Kevin Okane  
Oldcastle Precast  
Kieran Olflynn  
Mr. & Mrs. John Oppenheimer  
Mr. & Mrs. James Orapello  
Gerald Orlinick  
Ort Tool & Dye Corp  
P.S. 3  
Sabino Pace  
Antoinette Palanca  
Harry Paloumbis  
Pan Gregorian Enterprises  
Charitable Foundation of Upper N.Y  
Pan Gregorian Enterprises  
Panchiaki Korais Society, Inc.  
Pangaia Partners LLC  
George Pantelidis  
Alfredo Paredes  
Daun Paris  
Donna Patrick  
Jeffrey Pattie  
PEPCO  
Jerry Peppercorn  
Aviva Peress  
Dana Perlman  
Andrew & Todd Perry  
Donna A. Petagine  
Jonathan D. Petak  
Jon S. Peters  
Kevin Peters  
Petracca & Sons  
Bonnie Petrock  
Joseph Pettit  
Stephen Picerno  
Thomas L. Piper, III  
Platinum Maintenance Services Corp.  
Steven Politi  
Lauren & Rory Post  
Steve Pozzi  
Preferred Home Health Care  
Prestige Laboratories, Inc.  
Prism Hotel Partners  
Pro-Metal Construction Inc  
P.S. 183, Robert Louis Stevenson School  
Louise Pupelis  
Arthur Pyott  
Pete Quaglierini  
Quaker Ridge Golf Club, Inc.  
Ms. Elizabeth Li & Mr. Christopher Quek  
R. Siskind & Co.  
Audrey Rabsatt  
Ram P Gupta  
Mr. & Mrs. Donald S. Ramesdorfer  
Denise Ramirez  
RAND Engineering & Architecture, PC  
Michael Rapoport

Roslyn Raskin  
Raymond Michael Ltd.  
Raymond Opticians ofYonkers  
Michael Jeffrey Razny  
RCA Asphalt, LLC  
Erik Rees  
John J. Regan  
Reiken Construction Management, Inc.  
Elaine Reiner  
Marc Reiner  
Ms. Ellen Reinheimer & Mr. Barry Lovell  
Andrea & David Reiser  
REM Residential  
Jamie E. Reynolds  
Mr. & Mrs. Joshua Reynolds  
Mr. & Mrs. Joe Riccardo  
Richard E. Riegel, III  
Gerald Ring  
Fleurette S. Roberts  
Jeffrey Robinson  
Jim Rooney  
Mary F. Rooney  
Rose DuLude Audiology, PC  
Mr. & Mrs. Gary Rosen  
Lloyd Rosenbaum  
Sam Rosenberg  
Todd Ross  
Diane M. Rothong  
Patricia & Eli Rousso  
Harold Rubin  
Russell A. Farrow  
Mr. & Mrs. Peter Sachse  
Steven Sadoff  
Sage AVT  
Eugene Sala  
Jordan Salant  
Richard E. Salomon  
William R. Salomon  
Jack Salzman  
John Saric  
Estate of Catherine Savage  
Sax Macy Fromm & Co.  
Mr. & Mrs. Jay A. Scansaroli  
Scarsdale Firefighters Local 1394  
Scarsdale Police Benevolent Association  
Karen Schaufeld  
Robin & Arrien Schiltkamp  
Karen & Susan Schmitt  
Schneider Electric  
Theresa L. Schoenfeld  
Jenny Schragar  
Andrew Schulz  
Mr. & Mrs. Harvey Schussler  
Estate of Ellen Schwartz  
Lydia Schwartz  
ScoBert Inc.  
Barbara Seixas  
Michael Serghiou  
Carol Serrano  
Andrea Server  
John C. Sesko  
Sarah Setrakian  
William L. Seward  
Margaret Seymour  
Mike Shaffer  
Ambreen Shah

Cookie & Paul Shapiro  
Romie Shapiro  
Ramy Sharp  
George Shechtman  
Sheet Metal Workers International  
Glenn Shell  
Bernard Sherman  
Shoreline Custom Properties, LLC  
David Sicher  
Allison Siegel  
Mr. & Mrs. Carl Siegel  
Mr. & Mrs. Robert Siegel  
Elliot Silver  
Harry D. Silverstein  
Marie & Donald Simeone  
Steve Simon  
Robert E. Simpson  
Siris Capital  
Richard Skae  
Skyline Restoration Inc.  
Mason Slaine  
Jim Slattery  
Smashbox Cosmetics  
Emily H. Smith  
Robert Smolin  
SMS Engineering PC  
Society St. Philothea  
Marjorie Solferino  
Solomon & Tanenbaum, P.C.  
Despina Sourias  
Andre Spantopanagos  
Jennifer Spataro  
Mary K. Spengler  
Tara & Greg Spiegel  
Mr. & Mrs. Patrick Spillane  
Philip C. Spinelli  
Melanie & Jeffrey Spivak  
Grace & Anthony F. Spring  
Hari & Subha Srinivasan  
St. Nicholas Greek Orthodox  
Church  
St. Philothea Philoptochos Society  
Scott L. Stackman  
Sarah & Jeffrey Stafford  
Pelagia Stamos  
Paul D. Stanton  
State College of Florida  
Jennifer Steele  
Frank J. Stella  
Stockbridge Risk Management  
Inc.  
StoneCastle Partners, LLC  
Kenneth R. Strahs  
Amanda Straughter  
The Aaron and Lillie Straus  
Foundation Inc.  
Guy Struve  
Subcontractors Trade Association  
Mr. & Mrs. David Sudolsky  
Suffolk County Water Authority,  
Production Control Dept.  
Mary E. Sughrue  
Anneil Sullivan  
Angela A. Sun  
Dennis Swanson  
Mr. & Mrs. Allen B. Swerdlick  
Stephen Symonds  
Sylvia D. Sznajder  
John Tait

Mr. & Mrs. Bruce Talbot  
Mr. & Mrs. Joseph Taranto  
Louise Tashjian  
Lindsay Taylor  
Margaretta Taylor  
Teamsters Local Union No. 804  
Victor Tedaldi  
Michael Teller  
Temple Emanu-El Religious  
Steve Teneodios  
Mildred E. Teufel  
The History Channel/Lifetime  
Networks  
The Kentfields  
The Loyola Foundation  
The Rampart Group  
The Wood Tobe-Coburn School  
Maureen Theisz  
Shideh Z. Theunissen  
Joseph M. Thomas  
Arlene Thomashow  
Mark Tiernan  
Robin Tobin  
William D. Tobin  
Doris Tolins  
Richard Tomasetti  
Tomcon Industries, Inc.  
Chris Tomesko  
Artemis G. Toskos  
David Trahan  
Marvin Traub  
Tropham Foundation Inc.  
Mark Trowbridge  
Maria Turgeon  
John Turk, M.D.  
Catherine Turner  
Mr. & Mrs. George Tzitzikalakis  
Charles G. Ufelman  
Robert E. Unger  
Uniformed Fire Officers  
Association  
Unilever Matching Gift Program  
Universal Builders Supply  
Kevin Urban  
Linda Urmacher  
Verizon Foundation Matching  
Guy Vickers  
Vision Health and Fitness, Inc.  
Gloria Vitolo  
Ourania Vokolos-Zias  
James Volonakis  
David Wachtel  
Bella Wainberg  
Laurie Walters  
Philip W. Warner  
George Warren  
Bonnie Warton  
Jeffrey L. Webb  
Lee Weber  
Webster Bank  
Andrew Weinrich  
Leah & Michael Weisburg  
Mark B. Weisburger  
Ellen Weiss  
Sara Weiss  
Jessica & Kenneth Weitzman  
Michael Whitman  
Sarah Whittington  
Daniel Wickey

Gregory Wierzbowski  
Willetts Point Asphalt Corp.  
Dawn Williams  
Elicya Williams  
Joanne M. Williams  
Laurie Winans  
Mr. & Mrs. John Winkel  
Kedron Wolcott  
Carol S. Wolfe  
Adam Wolfson  
Michele Wolkoff  
Antonio Wong  
Peggy Wong  
Roy P. Wood, Jr.  
WRA Properties, Inc.  
Jaime Wright  
WWE, Inc.  
Aidi Xu  
Molly Yearick  
Aznive & Vram Yegparian  
YES Network LLC  
Mr. & Mrs. Brian Young  
Dr. Robert Zarabi  
Anastasia Zarokostas  
Raymond Zenere  
Helen Zervos  
Dorothy Zondag  
Aspasia Zoumas  
Matthew S. Zucker  
Mr. & Mrs. Stephen Zuppello  
Todd Zuzulo

**\$250-\$499**  
Lewis B. and Dorothy Cullman  
Foundation, Inc.  
1-800-flowers.com, Inc.  
1011 Lex Inc.  
330-West 36th Street Hotel Corp.  
A Better Image NY  
A.L. Solutions US, INC.  
Rose Aalto  
Molly Abady  
Abbey Locksmiths, Inc.  
Philip Abramsky  
David Abrutyn, M.D.  
Renee & Robert Abruzzino  
Layla Acito  
Helga Ackerman  
Ess & Vee Acoustical  
Contractors, Inc.  
John Adams  
Sarah Adedeji  
Alexandria Adler  
Advanced Aesthetic Smiles  
AEC Electronics, Inc.  
Aetna Giving Campaign  
Angela Aguiar  
AHBA, Inc.  
Ashley Aizenstein  
Albert Joseph Gallery  
Mr. & Mrs. Robert Albertelli  
Michael Album  
The Allards  
Margaret S. Allen  
ALM Fitness, Inc.  
Alpha Delta Pi Sorority  
Alps Management Inc.  
Jason Altberger  
Altman Foundation

Helen Altman  
Mr. & Mrs. Ronald Altman  
Althea Alvarez  
America's Charities  
Nisa Amoils  
Josephine G. Anagnos  
Steven Anagnos  
Mr. & Mrs. Venos Anagnostakos  
Paul J. Anan  
Karisa & Gregory Ancona  
Jaclyn Anderegg  
Derek H. Anderson  
Jennifer Anderson  
David Andreotta  
Andrew Romano, Attorney At  
Law  
Jacqueline Andrews  
Andy's Italian Ices  
Frank Angello  
Rebecca Anikstein  
Annunciation Greek Orthodox  
Church  
Brennian Antell  
Anthony Thomas Boiler Cleaning  
Jared Antin  
Lorraine Antonello  
Sheril D. Antonio  
Joel Aragona  
Mr. & Mrs. Chris Arapoglou  
James Arbolino  
John Arcidiacono  
Isabelle Arditi  
Arlington Beson Dowd, Litras  
Funeral Home  
James T. Ashe  
Latrise Ashford  
Association Laconon Inc.  
Astoria Fuel Corporation  
Michael Atmore  
Stephan Aungst  
Automatic Industries, Inc.  
Avon Products Foundation Inc.  
Brunilda Ayala  
Mandana Azhadi  
Zarifa Babaveva  
Mr. & Mrs. Robert Bachman  
Barbara Bady  
Roy P. Bahrenburg  
Edward R. Baier  
Mr. & Mrs. Thomas S. Bain  
Aicha Balla  
Michael B. Ballew  
Amelia M. Banino  
Bank of America United Way  
Campaign  
Jaede A. Barg  
Patrizia Barone  
Susan Barr  
Maria Barrera  
Jane C. Barrett  
Marvin Barrett  
Michael J. Barry  
Dianne W. Batten  
Mr. & Mrs. Mike Baum  
Shaye Ann Bautista  
Abba Bayer  
Nancy Baylis  
Deborah L. Beauchamp  
George Becker



Ronald S. Bedrossian  
Richard Begany  
Patricia Begley  
David Beier  
Mary C. Beirne  
John C. Belo  
Thomas J. Benigno  
Sharon & Edward Bergman  
Edith Berke  
Henrietta Berko  
Linda & Bill Berliner  
Michael D. Berman  
Tami & Mark Berman  
Bernard Garvey Painting Co Inc.  
Sheila Bernard  
Bessemer Trust  
Yovana M. Betancour  
Sandra Bevelacqua  
Brian T. Beveridge  
Glenn Beyer  
John C. Bianchi  
Big Apple Compactor Co., Inc  
Michael C. Bigler  
Barbara Bizub  
Bonnie Blae  
Robert M. Blakeman, Esq.  
William Blanco  
Karin Blaney  
Mace Blickman  
Bliss Spa  
Ms. Harriet Bloch &  
Mr. Evan Sakellarios  
Ellen Block  
Matt Block  
Eve & Bill Blohm  
Heather Bloom  
Michael Blum  
Bruce Bobbins  
Bobby's Jewelers  
Charles Boesenberg  
Eileen Bohan-Browne  
Bohler Engineering NY  
Alicia Bona  
Bonnist & Associates  
Israel Bordainick  
Edward Boutet  
Linda M. Bovich  
Maribeth & Benjamin Bowen  
Brian Boyle  
Kathleen Boyle  
Helane Brachfeld-Culvin  
Josephine Brady  
Susan Brandes  
Roberta C. Brause  
Patricia E. Brawer  
Barnett E. Brenin  
William Brennan  
Frances & Leo D. Bretter  
Stuart Bricker  
Mr. & Mrs. Barry Brill  
Bristol-Myers Squibb Company  
Alison L. Brod  
Jeffrey Brodsky  
Neil Brody  
Mr. & Mrs. John W. Brooks

Stephen and Linda Brown  
Foundation  
Linda Brown  
Lisa Brown  
Lois A. Brown  
Mr. & Mrs. Robert Brown  
Elliot Brownstein  
Marilyn Bruce  
Bubby's  
Susan Buchbinder  
Kathleen & Robert Buckheit  
Gayle Budres  
Anthony Buffalano  
Karen S. Buglisi  
Edward Bullard  
Danielle S. Burenstein  
Mr. & Mrs. Robert M. Burger  
Ms. Margaret Burke & Mr. David  
Gillespie  
Burke's Antiques  
Mr. & Mrs. Patrick Burns  
Martin Butensky  
Katherine Butler  
C. Stasky Associates  
Patricia L. Caferro  
Gerald Caffrey  
Robert Cahill  
Bartton Caiet  
Amanda Cain  
Henry Calcanes  
Ellen & Robert Calinoff  
Barbara Callahan  
Nicholas Callaway  
Elizabeth L. Calvert  
George S. Cambourakis  
Cammy Lee Leukemia  
Foundation Inc.  
Randy Campbell  
Zoeann Campbell  
Nicholetta Canaras  
Anthony J. Candio, D.M.D.  
Deborah Cane  
F. Cannizzaro  
Capflow Funding Group  
Managers LLC  
Douglas Capone  
Lisa Cappell  
Perla Capriles  
Carl Capuano  
Phil Cara  
Ryan Carillo  
Philip P. Carlivati  
Mr. & Mrs. Peter Carozza  
Patricia Carris  
Anne Carroll  
Paul & Gail Caruso  
Dame & Vincent Cascone  
Beatrice C. Cassidy  
Marie Catapano  
Richard Cavuoto  
Paulina Cepedacone  
Kathleen Chabus  
Baroness Amanda Chan  
Deno Charalambous  
Gregg D. Chatterton  
Chelsea Piers Management, Inc.  
Ellen Cheng  
Chilmark Foundation, Inc.  
Eugene W. Chinery

Lisa & Michael Ching  
Mark Chinitz  
Linda Chiu  
Edward Y. Cho  
Thomas Chowattukunnel  
Lloyd Chrein  
Toba Chrein  
David Chu  
Lauren Chung  
Danielle Cirrincone  
Mr. & Mrs. Levi Citarella  
Glenn M. Clarke  
Classic Kitchen Installations  
Jillian Clyburn  
Mr. & Mrs. Jeff Clyde  
Cohen Goldstein Silpe, LLP  
Alan S. Cohen  
Dennis Cohen  
Matthew Cohen  
Barbara Cohn  
Anthony J. Colao  
Colavita USA LLC  
Richard Cole  
Scott Cole  
Mr. & Mrs. Peter Coleman  
Carol Collins  
Matthew Collins  
Mr. & Ms. James Colon-Neyland  
Renee Conforte  
Patricia Conlin  
Sheila Conlin  
Jane L. Connor  
Joan Connors  
Frank Conte  
Catherine Cook  
The Cooper Family  
Alyse Cooper  
Barbara Cooper  
Joanne Cordano  
Joseph Coriasco  
Catalina Corona  
Corporal Allan F. Kivlehan  
Robert Cortiglia  
Elizabeth Cortright  
Mr. & Mrs. Todd Cosenza  
Anna Cosme  
Valerie Costa  
Barbara T. Costello  
S. L. Coutsodontis  
Roni & Howard Cowan  
Marty J. Coyne  
CP International Corp  
Elizabeth Cramer  
Ann M. Creo  
Kimberly Creo  
Crescent Street Construction  
Corp.  
Michael Crespi  
Mr. & Mrs. Peter O. Crisp  
Dennis Cross  
Kerry Crowe  
Crown Peters Travel Service  
James W. Crystal  
Lori Crystal  
Dean Cummo  
Edera Curcio  
Virginia Curtis  
CWA Local

Cyber City Teleservices  
Marketing, Inc.  
Costas Cyprus  
Florence D'Urso  
Marie Dakis  
Michela Daliana  
Patricia Daly  
Mr. & Mrs. Gabriel Damascus  
Vasilios Danas  
Peter Dancy  
Scott Daniels  
John M. Danish  
Robin Dansky  
Cheryl Dapolito  
George J. Darsa  
Charles R. Daugherty  
John Daum  
Dr. Morton Davidman  
Peter L. Davidson  
Mr. & Mrs. Carl De Brito  
Rodney De Cuffa  
Marie de Lucia  
Marie A. De Masi  
Edith Deane  
Stacey & Richard Deangelo  
Christine DeCurtis  
John Deegan  
Del Bello Donnellan Weingarten  
Wise & Wiederkehr, LLP  
Isabella del Frate Rayburn  
Terry & George Delis  
John J. Demascio  
Christine Denahan  
Megan Dennis  
Mr. & Mrs. Rutger DeQuay  
Mr. & Mrs. Steven G. Desanctis  
Elizabeth Desimone  
Deutsch Charitable Foundation  
Peter Deutsch  
James Devaney  
Charles Diaz  
Mr. & Mrs. John Dibari  
Daniel Dicarolo  
Brenda Dickinson  
Mr. & Mrs. Francis L. Dillon  
Mr. & Mrs. Michael Dinapoli  
Louis & Barbara DiNicola  
The Disability Fund  
Robert Diskin  
Mr. & Mrs. Richard Disney  
Sholeh Djahanbani  
Stephen P. Doherty  
William J. Donahue  
Robert Donner  
Dennis Donohue  
Leo P. Donovan  
Jerome and Laura Dorfman  
Charitable Foundation  
Caren Doucette  
Mary Doulis  
Officer JoAnne Dowd  
David Dradransky  
Richard F. Dretlein  
Duane Reade Pharmacy  
Mrs. & Mr. Barbara Duemesi  
Thomas Duger  
Margaret Duggan  
Joe Duke  
Samuel Duncan

Linda C. Dunham  
 Lenore Dunn  
 Deanna & Thomas Dunn  
 Richard Durkin  
 Jennifer Dyer  
 East Sixties Neighborhood  
 Association Inc.  
 Eastern Sanitation Service Corp.  
 EBS Liquors, Inc.  
 Louis Echavarria, Jr.  
 Ecker Window Corp.  
 Eric Edell  
 Douglas Egbert  
 eGolfScore  
 Heather Ehrenkranz  
 Martin J. Ehrenreich  
 Frances Ehrlich  
 Leonard Eidlen  
 D.A. Eifert  
 Eig Family Foundation  
 Scott Eisen  
 Richard A. Eising, Jr.  
 Valerie Elias  
 Emax Fund, L.P.  
 Empire Metal Finishing, Inc.  
 EN-POWER GROUP  
 Nancy Engdahl  
 Steven Engel  
 Alan S. Englander  
 Robert Englander  
 Danielle Englehardt  
 Entertainment Cruises New York  
 City  
 Epiphany Community Nursery  
 School  
 ERB  
 Joan Ericsson  
 Harold R. Eriv  
 Dr. & Mrs. Thomas Errico  
 Bernard Esquenet & Lee Ravin-  
 sky  
 Susan Estes  
 ETF Portfolio Management  
 David Etherington  
 Daniel Etra  
 Evangelical Lutheran Church  
 Paul Fagan  
 Lt. James Famularo  
 Sarah Fanjul  
 Kathleen Farrell  
 Caitlin Farrell  
 P. Farrelly  
 Father's Day / Mother's Day  
 Council, Inc.  
 Naura & Sean Faughan  
 Paul Faulkner  
 Charles J. Fausner  
 Dr. Lewis M. Feder  
 Federation Of Chians, Inc.  
 Nicholas Feffer  
 Jarett Fein  
 Mr. & Mrs. Sanford Feingold  
 Mr. & Mrs. Richard Feinstein  
 Mr. & Mrs. Marc Feinstein  
 Alan Feldman  
 Dr. & Mrs. David Felix  
 Stephanie & Michael Ferdman  
 Scott Ferguson  
 Jesus Fernandez Munoz  
 Grace Ferragamo  
 Louise Ferrara  
 John V. Ferris  
 Mark A. Fialk  
 Howard Fielding  
 Rick Fier  
 Emily Fine  
 Steven Finkel  
 Roy & Lana Fishelberg  
 James Fisher  
 Mark T. Fitzgibbon  
 Joan P. Flannery  
 Flatbush Tompkins  
 Congregational Church  
 Gregory Fleesler  
 Harold H. Flegenheimer  
 Conrad Fleming  
 Melissa Fleming  
 Pamela Flockhart  
 Vincent Flood  
 Alice Flynn  
 John Flynn  
 Dr. Roy & Mrs. Amy Fond  
 Hugh Fox  
 Trisha E. Franckowiak  
 Stacey & Nicholas Frangas  
 Michael Frank  
 Robert Frank  
 Bruce Frankel  
 Barbara Franko  
 Sevasti T. Frantzis-Lettas  
 June Freemanzon  
 Cherilyn & David Frei  
 Kathryn Frey  
 Charles Fried  
 Mr. & Mrs. Ira L. Friedman  
 Ellen Friedman  
 Jared Friedman  
 Mitchell Friedman  
 Nina Friedman  
 Marion Friedrich  
 Marc Frishman  
 Ruth Fromm  
 Michael Fruchtman  
 Daniel Fuchs  
 Mr. & Mrs. Frank Fuhrman  
 John Fulvio  
 Eric S. Funk  
 Pat Furia  
 Future Buisness Leaders  
 of America  
 Michael Gabriel  
 Sean Gagnon  
 Gail Accardi Pilates  
 Johanna R. Galasso  
 Deborah Galatianus  
 Debbie Galonsky  
 Anthony Garafalo  
 Hugo Garella  
 Ms. Sande Breakstone &  
 Mr. Ronald Garfunkel  
 Mr. & Mrs. Roy Garman  
 Rose L Garrido  
 Patricia Garry  
 Pamela Garvey  
 Shana Gary  
 Paulette R. & Daniel Gasparo  
 Nick Gavalas  
 Geibel Catholic Middle High  
 School  
 Stanley Geller  
 Gen Re  
 Deborah Genoversa  
 Georgios Georganes  
 Tina Gerling  
 Maxine I. Gerson  
 Greg Getschow  
 Stuart Gewirtz  
 Themis & Mando Giannitsanos  
 Christopher & Nancy Gibbs  
 Dr. & Mrs. George Gillen  
 Aaron & Betty Gilman Family  
 Foundation  
 Gina's 164th Food Service  
 Corporation  
 Mersini A. Ginis  
 Hilary Ginsberg  
 Giordano Beauty  
 Vicky Giouroukakis  
 Girl Scouts of Middle Village  
 Richard Giroux  
 Joseph Girven  
 Carl Giuseppone  
 Lucille Gladstone  
 Edward Glassmeyer  
 Adam Glatzer  
 Panagiotis Glavas  
 Bill Glazer  
 Gregory Gleason  
 Richard Glielmi  
 Michael Goering  
 Jeffrey M. Gold  
 Joseph Gold  
 Loren Goldberg  
 Paul Goldberger  
 Helene D. Goldfarb  
 Dr. Margot H. Jaffe & Mr. Alfred  
 Goldman  
 Daniel Goldman  
 Harriet Goldman  
 Jonathan Goldman  
 Michael Goldrick  
 Seth Goldstein  
 David Goldwasser  
 Debbie & Andy Gonzalez  
 Mr. & Mrs. Jennifer Goodman  
 Mary D. Goodspeed  
 Joanne Gordon  
 Michael Gordon  
 Claudio Gottardi  
 Goya Of Ascension  
 David Graber  
 Linda Grabkowski  
 Steve Gracyalny  
 Jeffrey Grant  
 Anthony Grasso  
 Cecilia Grasso  
 Regina A. & George Grasso  
 Jennifer Grausman  
 Johnny Graves  
 Deborah R. Graziano  
 Natalie Greaves  
 Steven Greco  
 Greek Orthodox Community  
 of St. Demetrios  
 Greek Orthodox Ladies  
 Ryan Greenawalt  
 Barbara & David Greenberg  
 Marc S. Greenberg  
 Raymond Greenberger  
 Michael Greenhut  
 Mr. & Mrs. David Greenstein  
 Greenstick Corporation  
 Gina Greer  
 Linda Gridley  
 Vincent Grimaldi  
 Ellen & Robert Grimes  
 Judy Gross  
 Robert Gruber  
 Stacey Guardino  
 Joan Gubernick Ruttenberg  
 Gerard Guest  
 Anton W. Guitano  
 Robert Gutman  
 Randi Guttenberg  
 H. Fox and Co., Inc.  
 Mary Hackman  
 Camilla Haddad  
 Mr. & Mrs. John W. Hadden, II  
 Ryan M. Hagan  
 Jonathan Hageman  
 Mr. & Mrs. Arthur R. Hahn  
 Mr. & Mrs. Susan Hahnenfeld  
 Hugh Hall  
 John Hallak  
 Patricia Halloran  
 Richard Halluska  
 Scott Halper  
 Mr. & Mrs. Charles Hammerman  
 Mr. & Mrs. Quentin Hamory  
 Hampton Hills Country Club  
 Aisha Haque  
 Harbor Management Corp.  
 Mr. & Mrs. Avner Harel  
 John Harner  
 Geoffrey Harris  
 Karin O. Harrison  
 Robert H. Harrison, Jr.  
 Edward J. Hart  
 Tricia & Jeffery Harte  
 William Harts  
 Eliana Hassen  
 Margaret A. Hauck  
 James Hausman  
 Patrick Heenan  
 HEFTI  
 Marvin Heiferman  
 Hellenic American Sports League,  
 Inc.  
 Hellenic Medical Society of NY  
 Bruce Heller  
 Elinor Heller  
 Thomas C. Hemhauser  
 Brad Henderson  
 Heather Henderson  
 Susan Hermann  
 Patricia A. Herrmann  
 Michael Herts  
 Nicola M. Heryet  
 High Five Foundation  
 Hightower Holding  
 David Hill  
 Margaret Hill  
 Dr. Catherine Hinterbuchner  
 Carolyn Hobbs  
 Melanie Hoff

Robert W. Hoke  
Mr. & Mrs. Michael Hokin  
Holy Trinity (Hicksville, NY)  
Russell G. Horn  
JJ Hornbliss  
Janice Horowitz  
Daniel Hotko  
Regina Houston  
Gail R. Hoyte  
John Hudesman, Ph.D.  
Mr. & Mrs. James J. Hughes, Sr.  
Rosanne Hurwitz  
Sandra Huseth  
Donna Iaquinto  
Jane Ibarra  
Rosario S. Ilacqua, CFA  
Mark R. Imowitz  
Mr. & Mrs. Mark Indelicato  
George Inserra, Jr.  
Institutional Investor Magazine  
INVESCO  
Stephanie Ivy  
Chandresh Iyer  
J&D Communication Inc.  
Mr. & Mrs. Andrew Jacobs  
Mr. & Mrs. Arnold Jacobs  
Rochelle Jacobs  
Stephen Jacobs  
Harold S. Jacobson  
Mr. & Mrs. Andrew A. Janczak  
Kenneth Jansson  
Jay Import Company  
Frances Jazombek  
Jazz Style Inc.  
Jefferies & Company, Inc.  
Walter Jeffrey, Jr.  
Jen-Er Residential Consulting  
Mr. Curtis R. Jensen & Ms.  
Cheryl Klaus  
Joe Jensen  
Brian Jermyn  
Jessie Rees Foundation  
Jeffrey Jewett  
Jesus Jimenez  
Robert Wood Johnson  
Foundation  
Alison Johnston  
Mr. Charles D. Johnston &  
Mr. John Crocker  
Barbara A. Jones  
Maria Joyce  
Matthew Jupin  
K & G Electric Co. Inc.  
Zara Kabir  
Andrew Kahn  
Kenneth M. Kahn  
Levent Kahraman  
Anastasia Kalogiannis  
Dick Kalt  
KAM Consultants Corporation  
Harold Kamine  
Matthew Kamine  
Daniel Kanter  
Karanikas Bros, Furs, Inc.  
Vasiliky Karelas  
Karen Arpin Interiors LLC  
Mr. & Mrs. William W. Karl

Calliope Kastanos  
Zoe Katsoulakis  
Janet Katz  
Noah Katzen  
Todd Kauffmann  
Neil Kavakos  
Lynn & Richard Kay  
James Kearns  
Sheila Keefe  
Michael J. Keenan  
Georgia Keghlian  
Linda Keller  
David Kells, Jr.  
Douglas Kelly  
John Kelly  
Michael Kelly  
Patricia A. Kelly  
Ken's Beverage  
Barbara A. Kenney  
Kenny Building Services, Inc.  
Leona Kern  
Betsy Kerner  
Mr. & Mrs. Robert Kerr  
John Kick  
Maureen Kiernan  
Dmitry Kilin  
Patricia Kim  
Pauline Kim  
Margaret A. & Anthony O. King  
Donis King  
Anna Kirshblum  
Mr. & Mrs. Lewis Kish  
Rochelle Klass  
Marsha Klein  
Richard A. Klein  
Sheila Klein  
Abigail Klem  
Yuri Kletsman  
William Knoop  
Knuckles, Komosinski & Elliott,  
LLP  
Jeffrey Kobernick  
Kobre & Kim LLP  
Koch, Koch & Bennett  
Edgar R. Koerner  
Faye Kokotos  
Viki Koletsos  
Connie Konsulis  
Daniel Kopcha  
Alexis Kopp-Smith  
Cynthia F. Korkuch  
Dr. & Mrs. Nathan A. Korn, D.D.S.  
Dimitrios Kostopoulos, P.C.  
Jeffrey Kottkamp  
Georgia & John Kourtesis  
Arthur Kowaloff  
Debra & Herbert Kowalsky  
Barry Kramer  
Peter Krauss  
Kate Krieger  
Rita Kronovet  
Elizabeth Krulik  
Mr. & Mrs. Stanley Kubernat  
Nancy J. Kuenster  
Edward P. Kujawa  
Joel Kulina  
David Kuntz  
Kyriakos Family Trust  
Kimberly Kyte

Mr. & Mrs. Frank La Rocca  
Ladies Philoptocher Society Of  
St. Eleftherio  
Ladies Philoptochos Society -  
Holy Trinity G-O Church  
Ladies Philoptochos Society  
'Nausica'  
Ladies Philoptochos Society  
of Panaghia of Island Park  
Ladies Philoptochos Society  
Transfiguration of Christ  
Ladies Philoptochos Society  
Christina LaGrega  
Lakewood ACE Corporation  
Chandan Lakhotia  
Nitin Lakhotia  
Frank M. Lam  
Steven Lambert  
Marielle J. Lang  
Dana Langerman  
Teresa & Mark Langton  
Jeff & Jeffrey Lanning  
Donna & Jeffrey Lanning  
Ann Lanza  
Steven Lanzano  
James Laporte  
Janet Larkin  
William Latham  
Marcia Pia Lattanzi  
Kenneth Laufer  
Jill Lauri  
David Lautz  
Norma Lavender  
Linda & Joseph Lavin  
John Lavora  
Law Offices of Hugh Janow, LLC  
Patty Laxton  
Paul Le Noble  
Dr. Erwin Lear  
Jeung Lee  
Mr. & Mrs. Larry Leff  
David Leipzig  
Mrs. Robert Lemke  
Susan Lenhart  
Susan & William K. Lenhart  
Kevin Lennon  
Linda Lennon  
William Lentz  
Richard Leonard  
Leslie Barrett  
Connie Leung  
David Levin  
Lawrence J. Levine  
Neil Levine  
Sheldon Levitas  
The Levy Group, Inc.  
Susan & Lawrence R. Levy  
Bob Lewis  
Gayle & Daniel Lewis  
Mr. & Mrs. Henry Liberta  
Jeffrey Liddle  
Mr. & Mrs. Howard Lieb  
Lieutenants Benevolent  
Association  
Kristin Liezenga  
Donna & Jeff Lilley  
Sara & Greg Lilley  
Johanna Limekiller  
Rebecca Lindenbaum

Jessica & Stuart Lippman  
Mr. & Mrs. Richard Liroff  
Irene Lista  
Matthew Litman  
Stuart Litman  
Elena Liu  
Livonos Family  
Patricia Lizarraga  
Lloyd Bedford Cox, Inc.  
Dr. Ronald D. Loffredo  
Gina & Michael Lombardi  
Joan A. Longarzo  
Diane Longo  
Marian P. Longobucco  
Janet Lonney  
Ruth Lopez  
Elizabeth Lore  
Mr. & Mrs. John Losquadro  
Susan & Allan Luckman  
Luhring Augustine Gallery  
Dr. & Mrs. Kristine Shays Lupi  
Michael Lupo  
Caitlin & Massimo Lusardi  
Lynch & Associates  
Patrick J. Lynch  
Jessica Maccario  
Joan B. Macklin  
Jay A. Macmoran  
Madison Charitable Fund, Inc.  
Joseph Magliocco  
Dr. Joel G. Magloire  
Johanna & Christopher Magovern  
Robert P. Mahalko  
James D. Mahan  
Stephen Maher  
Edward Mahoney  
The Mahopac National Bank  
Alan Maio  
Rev. Father Gerasimos Makris  
Maletona Corp  
Malimos Deli Corp  
Virginia Malley  
Irene Mallis  
Mr. & Mrs. Dennis E. Malloy  
Dave Maloney  
Tony Mamounas  
Dr. & Mrs. John Manfredi, Jr.  
Jed Manocherian  
David Manookian  
Tim Mantovi  
Maplelane Capital, LLC  
Angela Maragos  
Peter Marber  
David Marcus  
Victor Marcus  
Joseph Marin  
Marc Marin  
Lauren Marino  
Philip Marino  
George Marinos  
Maria Marketos  
Abbie Marks  
Richard Marrero  
Kenneth C. Marshall  
Michael A. Martzahl  
The Maryam and Hervey Seley  
Foundation  
Luke, Isabella & Mark Masciangelo  
Carmella (Candy) Matarazzo



E. Matarazzo  
Teresa Matrullo  
Vincent Matthews  
Barbara Matzerath  
Anthony Mauro  
Angelo May  
Claudia Mayer Santos  
Barbara A. Mazur  
Clara Mazzei  
Sherry McAllister  
Monsignor Mike McCarthy  
Edith C. McCormick  
James McDonough  
Jean McDonough  
Mr. & Mrs. John J. McEvoy  
Mr. & Mrs. Kenneth McGarry  
Sarah McGee  
Mr. & Mrs. McGilloway  
Lawrence McGoldrick  
Daniel McGowan  
Christine McGuigan  
Beatrice McHale  
James A. McHenry  
Joan McKeating  
Kevin McKenna  
Meg & Tom McKenzie  
Lois McKeon  
Ana McLaughlin  
Mr. & Mrs. Kevin McLaughlin  
Ms. Kathleen McLeod &  
Mr. Michael Zacharias  
Keith McRedmond  
Margaret McSheffrey  
MDC Productions, Inc.  
Andrea Medina  
Mary Melvin  
Otilia Melwani  
Jeffrey B. Mendell  
Mr. & Mrs. Robert Mendelson  
Dr. Faith A. Menken  
Thomas Merges  
Liz & Elias Meris  
Dr. Joseph P. Merlino  
Valerie A. Merone  
Daniel Mertz  
Joseph Messina  
Nicole Meyer  
Dr. Spyros G. E. Mezitis  
Mr. & Mrs. Steve Michailidis  
Janet Miedema  
Joseph Milillo  
Mr. & Mrs. Robert C. Mill  
John Millas  
Amy Miller  
Earl Miller  
Ernestine Miller  
Lawrence Miller  
Lisa Miller  
Mrs. Tomm Miller  
Michael Milward  
Douglas Min  
Mindy Eisenberg Stark, CPA, CFE  
Chloe Minieri  
Mink Mart, Inc.  
Matthew Mirones  
Michael J. Mitchell  
Barbara Modica  
Vincent James Mohan  
Robert Moitoso  
Angela & Joseph Mole  
Bruce A. Molinaroli  
Joseph Mollica  
Maria & David Molton  
Christopher Monaco  
Arthur Monahan  
Jeff C. Mondry  
Alexandra J. Moosally  
Petra Morales  
Drew Morgan  
Timothy Morgan  
Stanley Morin  
Morris Catholic High School  
Andrea & Trent Morris  
Thomas Morrison  
Edward Morse  
Rebecca Morse  
Mr. & Mrs. Guido A.J. Mosca  
Dale B. Moses  
Joyce Moulthrop  
Athena Moustakas  
Mr. Z Towing Inc  
William Muller, Jr.  
Mulrain Emergency Equipment  
Corp.  
Annabella Murphy  
James F. Murphy  
Kenneth M. Murphy  
Martin Murphy  
Maryann Murphy  
Virginia Murphy  
Annie Murray  
Al Murstein  
Jessica Muscat  
Mr. & Mrs. Ralph Musollino  
Christine Myerson  
Joseph W. Myles  
Charlotte Nad  
Stephanie Naftelowitz  
Anand D. Nair  
Steven Nakash  
Mary Nakis  
Karen A. Nassauer  
National Philanthropic Trust  
Gladys Neidnig  
Dr. Bernt Nesje  
Net Return Asset LLC  
Carmen O. Neu, M.D.  
New York Health & Racquet Club  
New York Islanders  
New York's Hotel Pennsylvania  
Robert S. Newton  
Next Management LLC  
Steven Niamonitakis  
Alissa Nierenberg  
Elaine Nigro  
Teresa Ning  
Maryellen Nizza  
Janet & Charles Noll  
Ronald D. Noll  
Northeast Plumbing Supply  
Stephen Novis  
Kellianne Nuara  
Stephen Nuckel  
Kevin C. O'Brien  
Lawrence O'Brien  
Edward O'Connor  
Joseph P. O'Connor  
Siobhan O'Driscoll  
Mr. & Mrs. Christopher  
O'Gorman  
Kathleen O'Hanlon  
Elizabeth O'Neill  
Laura Odell  
Mark Odendahl  
Charlotte Olson  
John Olson, Jr.  
Michelle A. Olson  
Kimberly & Brian Orcutt  
James N. Orfanos  
Lucrecia Ortiz  
David Ostrow  
Helen Otto  
Steven Overbey  
P.S. 277 Brooklyn  
Peter P. Pace  
Veronica Padron  
Ann Pagano  
James P. Pagano, Esq.  
Palace Plumbing & Heating  
Supply Corp.  
Joanna & Joseph Palumbo  
Alyce D. Pancio  
Mr. & Mrs. Louis Panico  
Anita Pankowska  
Panorama Windows Ltd.  
Stella Pantelidis  
Marion T. Papalillo  
Marianna Papadatos  
Pierre Papadeas  
Georgios Pappas  
John Pareja  
Barbara Parello  
Dongwook Park  
Jeffrey Parker  
The Parlour  
The Parlour  
Cindy Parrott  
Jenita Lee Parson  
Parthenon Ahepa Chapter 495 Inc.  
The Arthur Pashcow Memorial  
Foundation  
Kim A. Pasqua  
Mona Pasternack  
Amit Patel  
Mary Pavlides  
PBHB, Inc.  
Stephen Pearlman  
Dennis Pedretti  
Michael Pedulla  
Arch Pelley  
Agustin Pena  
Madeline Pena  
PepsiCo Foundation Matching  
Gift Program  
John Perez  
Maria C. Perfetto  
Vincent Pergola  
Christopher Perhacs  
Lesley Perlman  
Anne Perry  
Christopher Perry  
Peter Elliot Women  
Catherine E. Peter  
Eileen Petraitis  
Mr. & Mrs. John Petras  
Nicholas Petras  
Donna M. Petrick  
Felix Petrillo  
Mr. & Mrs. Christopher Petromelis  
The Petrucci Family Foundation  
Andrea Pfenning  
Phi Sigma Kappa Druid Alumni  
Corp  
Robert Philipps  
Charles M. Phillips  
Daniel J. Phillips  
Michael Pickett  
Edward Pincover  
Valerie Pinder  
Richard Pinsker  
Richard C. Pisano  
Nicholas G. Pituras  
Joseph Platt  
Tom Plaut  
Neil Plotkin  
Jennifer Polak  
Myah Pollak  
Felix Pomerantz  
Leslie Fay Pomerantz  
Mark Posey  
Kristine Poteat  
Eugenia Poulakas  
Matt M. Powers  
Norma Prescott  
Prestige & Group Sales Box  
Office  
Mr. & Mrs. Anthony J. Principato  
Printing Industries Alliance  
Progressive Insurance Foundation  
Mr. & Mrs. Demetrios Prountzos  
Joseph A. Provetto  
Jakes Prusky  
Elizabeth Pyne  
Karin Rabin  
Athina Rabos  
Margarita Rada  
Pinchus Raice  
Mr. & Mrs. William T. Rainey, Jr.  
Deborah Raizes  
Henry Ramallo  
Kathleen & Richard Ranft  
Michael Rashti  
Doug A. Raymond  
RBHammers Corp.  
RCDolner LLC  
Evelyn Read  
Marilyn B. Reagan  
Elizabeth Recine  
Dr. Haricharan Reddy  
Ronald Reede  
Ron R. Reedy  
Refurbco, Inc.  
James W. Regan  
John Regan  
Richard W. Regan  
Laura C. Reid  
Jason Reina  
Wendy M. Reiners  
Richard Repetto  
Ira Resnick  
Mr. & Mrs. Robert Restruck, IV  
Mr. & Mrs. Demetri Rexinis  
Eileen Reynolds  
Deacon Vincent P. Ricciardi, Sr.  
Kevin Richards  
Stephen Richardson

Richland Industries  
 Ridgefield Music and Arts Center  
 Donald Riker  
 Elaine Riley  
 Charles Ringhel  
 Aurelio Rios  
 Riteway Laundry & Cleaners  
 Robert Ritzer  
 John Rivera  
 Norma Rivera  
 Earl G. Rix  
 William Roak  
 Marc Roberts  
 Sandy L. & Mark Roberts  
 George Rocha  
 Lester Rodriques  
 Eileen Rogers  
 Mr. & Mrs. Robert Rose  
 Laura Rosenbaum  
 Andrew Rosenberg  
 Benjamin Rosenberg  
 Mrs. & Mr. Frances Rosenfeld  
 Glen Rosenthal  
 Banu & Moris Roso  
 Mr. & Mrs. Arnold Ross  
 Patricia M. Ross  
 Amy Rossabi  
 Gary S. Roth  
 Mr. & Mrs. John H. Roth  
 Robert Ruehs  
 Donald Rugama  
 Deena Russell  
 Ruth L. Russell  
 Russo Orthodontics  
 Gregory Russo  
 Nicholas Russo  
 Peter Ryan  
 Rita Ryan  
 Rye Country Day School-Hands  
 On Committee  
 Ryer Avenue Elementary School  
 Vita Sabella  
 Anthony Sacco  
 Elizabeth and Elias Sacks  
 Rocco Sacramone  
 Mauricio Sada-Paz  
 Nara Sadagursky  
 Thomas Saggiomo  
 Saint Nicholas Greek Orthodox  
 Church  
 Ehab Salama  
 George J. Salicco  
 Marilyn Salierno  
 Patricia G. Salisbury  
 Dale A. Salmanson  
 Barbara Salmon  
 Mr. & Mrs. Peter Samberg  
 Susan Sampliner  
 Ranjit S Samra  
 Timothy Samuells  
 Esther Sanchez  
 Patricia A. Sandholm  
 Jeffrey S. Sandler  
 Sandvik Inc.  
 Roberto Santiago  
 Richard Saperstein  
 Eddie Sapienza

Pauline Sapountzaki  
 Sergeants Benevolent Association  
 Sassoon Salon  
 Michael Savage  
 Deme Savopolis  
 Marissa Saxe  
 Robert Scalzitti  
 Scarsdale Fire Co. #1  
 Curt Schaaf  
 Mrs. Royal Schaaf  
 Roberta Schaefer Family  
 Foundation  
 Ann Schaefer  
 Harry Schall  
 Katherine Scharlatt  
 Mr. & Mrs. Peter Scheman  
 Linda Schmidt  
 Sheila M. Schmidt  
 Lucille Schneider  
 Blair & Scott Schoeb  
 Richard Schoendorf  
 Jennifer Scholnick  
 Dr. Arthur Schore  
 Bonnie & Charles Schulman  
 Marjorie Schulte  
 Marianne Schumacher  
 Ruth M. Schuman  
 Kenneth Schurr  
 Rise Schwab  
 Jodi Schwalb  
 Christina Schwartz  
 Mary Schwartz  
 Michael Schwartz  
 Rosemary T.S crima  
 Jeanne M. Scungio  
 Tara Seawright  
 Sydell Sedlitz  
 Margaret Seery  
 Anna Seibert  
 Mr. & Mrs. John Sekkas  
 Linda A. Sellitti  
 Frances Sexton  
 Uday Shah  
 Joseph Shanley  
 Shannon Webster Charters, Inc.  
 Michael Shaprio  
 Walter Sharff  
 Matt Shay  
 Michael E. Shea  
 Ryan Sheehan  
 Mr. & Mrs. Edward Sheldon  
 Lawrence Shelley  
 Barbara M. Shepherd  
 Sheraton Hotels  
 Mr. & Mrs. Kevin Sherlock  
 Martha Sherman  
 Michael P. Sherman  
 Steve Shiffman  
 Vivian Shiffman  
 Dave Sholtis & Family  
 Shopbop  
 David Shuck  
 Charles Shulman  
 Josephine Siciliano  
 Cheryl A. Sickles  
 Mr. & Mrs. Michael L. Siderakis  
 Howard Sidman  
 Irene Sidun  
 Allison Siegel

Lauren Silber  
 Jon Silvan  
 Anne & Stanley Silverstein  
 Becky Simpson  
 Thomas Simpson  
 Stephen Sincovich  
 Harriet & Andy Singer  
 Frank P. Siragusa  
 Michael Sirkin  
 Catherine Skidmore  
 Ms. Carolyn Skiffington &  
 Mr. Gary Schechter  
 Lee Skolnick  
 Konstantinos D. Skordelis  
 Demetre Skoufas  
 Maurice Slater  
 Christopher Slattery  
 Brian Smith  
 Amy & Jeff Smith  
 Lloyd Sneddon  
 Kristopher Sneed  
 Jerome Snider  
 Matthew A. Snyder  
 Angela Sonnenblick  
 Lucy Soovajian  
 Lauren Sorrel  
 Thelma Sotiropoulos & Georgia  
 Sotiropoulos  
 Southern Star Shipping Co, Inc.  
 Susan Spaeth  
 Louis Sparacino  
 Edwin Spieiman  
 Tara R. Spillane  
 Christine Spinelli  
 Justin Spitzer  
 Natalie Bruno Squassi Cancer  
 Foundation  
 Andrew Srebnik  
 St. Barbara's Philoptochos Society  
 of St. George Greek  
 St. Demetrios Naupactias  
 Brotherhood of America  
 St. Stephen Of Hungary Church  
 Anne E. Stabile  
 Jonathan Stadin  
 Kevin Stasinski  
 Martin Statfeld  
 John Stathakos  
 Katherine Stauder  
 Rebecca & Andrew Stein  
 Theodore Steingut  
 Peter Stenzi  
 Trudy & Al Stephan  
 Mark Stephens  
 Lee D. Stern  
 Mark A. Stevens  
 Helaine Stiffel  
 Andrew D. Stone  
 Stephanie Storey  
 Nicholas Strange  
 Mary & Chris Stratakis  
 Constantine Stratis  
 Joshua Strauss  
 Michael Strauss  
 Peter Strauss  
 Canon Streich  
 John Stretchman  
 Strokos Gourmet Deli Inc.  
 Ann M. Subach

Sullivan Gardner  
 Mr. & Mrs. Neal Sullivan  
 Mr. Thomas Sullivan  
 Tim Sullivan  
 Douglas Summer  
 Shaker Sundaram  
 Nicole X. Suozzi  
 Margaret Sushon  
 Eric Sutherland  
 Gina & Lou Switzer  
 Stanley Szaniawski  
 Anthony Tadduni  
 Begum B. Taft  
 Robert Taft  
 Ruhina & Naeem Tahir  
 Daniel Tai  
 Takirika Corp.  
 Michele Tanner  
 Maria Tartaglione  
 Ramil Taveras  
 Christine Taylor  
 Matthew Taylor  
 Robert Taylor  
 Jerrold Teitcher  
 Tel-A-Car Of NY, LLC  
 Carmine Telesca  
 Stephen Temes  
 Alex S. Tepper  
 Kelly Terry  
 The Town School  
 Garrett W. Thelander  
 Foula & John Theodoridis  
 Sitheria Theodos  
 Mary Ann Thomas  
 Robert Thomasset  
 Angela Ting  
 Susan Tisch-Allen  
 Titan Foods, Inc.  
 Demetra Bezas Tolis  
 Catherine Tombari  
 Top Notch Domains, LLC  
 Daniel Toscano  
 Kim Towner  
 Mr. & Mrs. David Townshend  
 Beth Tractenberg  
 Joseph F Trainor  
 Linda J. Tricarico  
 Triple Crown Sports  
 Memorabilia, Inc.  
 Joseph Tropeano  
 Catherine Troy  
 Thomas True  
 Derek Trulson  
 Peter Tsambazis  
 Georgia Tsikaris  
 Mr. & Mrs. Nick Tsikitas  
 Joanna Tsopelas  
 Richard J. Turcsik  
 John R. Ubhaus  
 Nerci Urban  
 Utility Painting Co.  
 Mr. & Mrs. Kenneth Uva  
 Soulafreda Valassis Esq.  
 Steven Valassis  
 Heidi Valgoi  
 Valley National Bank  
 Louise Van Gilder  
 H. L. Van Varick  
 Lorenzo T. Vanore

Nita Varia  
Elpida & George Vasiliadis  
Harold B. Vasios  
Stefanos Vattes  
Dennis Vavassis  
Vertex Electric Corp  
Lisa Vetrone  
Mikchael Vicinitore  
Mr. & Mrs. Philip Villi  
Brian Virgo  
Melissa Vitelli  
Zhanna Vitlin  
Mr. & Mrs. Nick Vlamis  
William Vlaun  
Lesa & Ernest Vogliano Jr.  
Robert M. Vorsanger  
Guy Wade  
The Wagner Family Foundation  
Dr. Janette M. Wahba  
Arjun Wahi  
Brett Waikart  
Michael Wainstein  
Robert Walder  
Diane Wallerstein  
Joan Warburg  
Joseph Ward  
Edward J. Wasilewski, Jr.  
Waters Corporation  
Kim & Dan Watkoske  
Lara & Michael Watzky  
Wendy Waugh  
Thomas Waye  
Donald Weber  
Marc Weill  
Lori Weinstein  
Natalie J. Weinthal  
Mrs. Peter F. Weir  
Catherine J. Weiss  
Loren Weiss  
Ronald J. Weiss  
Charles Weissman  
John S. Welker  
Wells Fargo Advisors, LLC  
Deegan Financial Group Wells  
Fargo Advisors  
Claire Wen  
Anthony N. Wenham  
Joseph Westbrook  
Kate Whalen  
Whip McGee, Inc.  
Christopher White  
John J. White  
Irene Whiting  
Dorothy Whitney  
Eleanor Widdoes  
Jeffrey Wieland  
Matthew Wile  
Bertha Williams  
Leslie K. Williams  
Patrick Williamson  
Ben Willig  
Michelle & Slade Winchester  
Stacy Winder  
Batcheva Winokur  
Jacob B. Winsten  
Patricia Winsten  
Mr. & Mrs. Paul Wintrich  
Nina Wintringham  
Jeffrey Wisoff

Stephen Witkowski  
Richard Wolf  
Dr. Nancy E. Wolff  
Andrea Wong  
Amy Wood  
Julia Wood  
Annmarie Woods  
Michael Woods  
Thomas A. Wornom  
Samuel Wu  
Mayank Yadav  
Randy & Murray Yanker  
Stephen Yarri  
Mr. & Mrs. Dixon Yee  
Marla Yoss  
Barbara Young  
Josephine A. Young  
Mary Zafiris  
Nicholas Zagoreos  
John M. Zak  
Christine & Glen Zammit  
Lambros Zapantis  
Dorothy Zeiser  
Deborah Zenda  
Lois Zenkel  
Helene Zera  
Ziakas Family  
Allison Zivin  
Ioannis Zois  
Mr. & Mrs. Kenneth A. Zuber  
Alex Zuckerman



# 2012 Staff Giving

In 2012, with 100% participation, the staff of Ronald McDonald House® New York contributed more than \$42,000 in personal earnings in support of the House's mission. This act reflects the extraordinary commitment of those who serve families battling pediatric cancer.

Althea Alvarez  
Daniel Badillo  
Michael Ballew  
Nelida Barreto  
Vladimir Ceans  
Edward Cho  
Felix Colon  
James Colon  
Winifred Cudjoe  
Gregory Denizard  
Teresa Eggers  
Mel Farrell  
Cherilyn Frei  
Nina Friedman  
Natalie Greaves  
Joseph Guidetti  
Elvis Herbine  
Suzanna Houston  
Adrian Jarrett  
Latifa Kahric  
Spiridoula Katechis  
Jerome Kelton  
Pauline Kim  
Karen Kirk  
Yugenia Krivogorskaya  
Patrick Lenz

Darlene Lord  
Nikki Margarites  
Richard Martin  
Jose Mojica  
W. Fordham Murdy  
Antonio Neto  
Ronald Odum  
Lucrecia Ortiz  
Roger Polanco Rada  
Jennifer Roberts  
Jim Rooney  
Roberto Santiago  
Michael Scarlett  
Sheila Senecal  
Jamie Serkin  
Patrick Shand  
Joanne Shapiro  
Thomas Sinito  
William T. Sullivan  
Migdalia Vasquez  
Willie Warmley  
Jacob Ben Winsten  
Stephen Yarri  
Josephine Young  
Susana Zheng

# Statements of Financial Position

As of December 31, 2012 and 2011

	<u>Unaudited 2012</u>	<u>Audited 2011</u>
<b>Current Assets</b>		
Cash and Cash Equivalents	\$ 1,575,448	\$ 1,574,044
Investments	44,475,243	40,354,494
Other Current Assets	1,218,774	1,269,951
<b>Total Current Assets</b>	<u>47,269,465</u>	<u>43,198,489</u>
Contributions and Pledges Receivable	1,439,995	1,036,118
Property Plant and Equipment – Net	25,213,125	24,686,411
Other Assets	47,659	64,347
<b>Total Assets</b>	<u>\$73,970,204</u>	<u>\$68,985,365</u>
Accounts Payable and Accrued Expenses	\$ 1,358,200	\$ 1,315,907
Bonds Payable	6,600,000	7,500,000
Net Assets	66,012,004	60,169,458
<b>Total Liabilities and Net Assets</b>	<u>\$73,970,204</u>	<u>\$68,985,365</u>

The December 31, 2012 balances are unaudited and a representation of Management.

# Statements of Activities

## Years Ended December 31, 2012 and 2011

	<b>Unaudited 2012</b>	<b>Audited 2011</b>
<b>Public Support and Revenue:</b>		
Public Support	\$13,472,416	\$11,681,967
Investment Income/(Loss)	3,860,921	(763,193)
Other Revenue	818,157	900,574
Total Other Revenue	<u>4,679,078</u>	<u>137,381</u>
<b>Total Public Support and Revenue</b>	18,151,494	11,819,348
<b>Expenses:</b>		
Program Services	7,432,677	7,219,883
Supporting Services:		
Management and General	1,257,888	1,487,621
Fundraising	3,618,383	3,006,069
Total Supporting Services	<u>4,876,271</u>	<u>4,493,690</u>
<b>Total Expenses</b>	<u>12,308,948</u>	<u>11,713,573</u>
<b>Change in Net Assets Before Write-off of Assets</b>	5,842,546	105,775
Write-off of Assets	-	<u>(16,203)</u>
<b>Change in Net Assets</b>	5,842,546	89,572
<b>Net Assets – Beginning of Year</b>	<u>60,169,458</u>	<u>60,079,886</u>
<b>Net Assets – End of Year</b>	<u>\$66,012,004</u>	<u>\$60,169,458</u>



## Board of Directors

### *Officers*

Stanley B. Shopkorn

*Chairman of the Board*

Milton R. Berlinski

*Vice Chairman*

Harris Diamond

*Vice Chairman*

Tina Lundgren

*Vice Chairman*

William T. Sullivan

*President & CEO*

Richard J. O'Reilly, MD

*Vice President*

Peter L. Samaha

*Vice President*

George Simeone

*Vice President/Finance*

*Committee Chair*

Shelly S. Friedman, Esq.

*Secretary*

James F. Flanagan

*Treasurer*

Vivian Harris\*

*President Emeritus*

### *Directors*

Kathryn Beal, MD

Steven J. Bensinger

Terry Bovin

Louise Camuto

William L. Carroll, MD

E. Randall Clouser

Bruce D. Colley

Jerry de St. Paer

Alex Dimitrief

Randel A. Falco

James E. Fitzgerald, Jr.

Casey Gard

Peter C. Georgiopoulos

Judy Gilbert

Joseph R. Gromek

Robert Grubert

Ellen R. Harris

James A. Jacobson

Jacques Jiha, Ph.D

Thomas M. Joyce

Gary LaBarbera

Robert E. La Blanc

Sacha Lainovic

Kenneth G. Langone

Candace Leeds

# Leadership



James P. MacGilvray

Timothy J. Mahoney, Jr.

Eric Mandelblatt

Ralph Monte

Tom Murry

Joel Newman

Frank Pellegrino

Lee H. Perlman

David A. Preiser

Kathy B. Presto

Michael E. Roemer

Myron "Mike" Shevell

Joan M. Squires

Clifford A. Sterling

### *Members at Large*

John M. Angelo

Barbara Eig

Michael A. Giunta

Michael Hegarty

Theodore P. Janulis

Rocco J. Maggiotto

George F. Mikes

J. E. Reeves, Jr.

Rick Richardson

Felicia Taylor

\*Deceased

## Board of Associates

Eric Anton

Michael Antonacci

Leslie Barrett

Ranika Cohen

Jesse Cole

Patricia Donaldson

Jennifer Farber

Deborah Freer

Joshua D. Glazer

Daniel Grattan

Jennifer J. Hadiaris

Joseph Hornstein

Anne Jablonski

Robin Lowe

Michael V. Marrale

Dave Matthews

Holly Mitchell

Daniel O'Regan

Trish Wescoat Pound

Jennifer Raines

Howard Sadowsky

Gregory Spiegel

Tara Spiegel

Rocco Strazzella

Tom Strohmenger

Debra Teramo

Jordan Teramo

Christopher S.

Theodoros

Michael Weisburger

Guy Weltsch

Liz Wintrich

Christa Zambardino

# Management Team

William T. Sullivan ..... President & Chief Executive Officer  
*wsullivan@rmh-newyork.org*

Michael Ballew ..... Director of Donor Management Systems  
*mballew@rmh-newyork.org*

Nelida Barreto ..... Director of Programs • *nbarreto@rmh-newyork.org*

Edward Cho ..... Information Technology Manager • *echo@rmh-newyork.org*

Winifred Cudjoe ..... Director of House Operations • *wcudjoe@rmh-newyork.org*

Teresa Eggers ..... Director of Volunteers • *teggers@rmh-newyork.org*

Mel Farrell ..... Building Engineer • *mfarrell@rmh-newyork.org*

Cherilyn Frei ..... Director of Family Support • *cfrei@rmh-newyork.org*

Natalie Greaves ..... Director of Communications • *ngreaves@rmh-newyork.org*

Joseph Guidetti ..... Chief Financial Officer • *jguidetti@rmh-newyork.org*

Elvis Herbine ..... Evening Manager • *eherbine@rmh-newyork.org*

Suzanna C. Houston ... Assistant to the President & Director of External Affairs  
*shouston@rmh-newyork.org*

Jerome Kelton ..... Development Officer • *jkelton@rmh-newyork.org*

Karen Kirk ..... Director of Special Events & Assistant Director of Development  
*kkirk@rmh-newyork.org*

Patrick Lenz ..... Director of Human Resources & Volunteer Development  
*plenz@rmh-newyork.org*

Darlene Lord ..... Assistant to Director of House Operations/Manager  
*dlord@rmh-newyork.org*

Nikki Margarites ..... Director of Major Gifts • *nmargarites@rmh-newyork.org*

Richard H. Martin ..... Director of Development • *rmartin@rmh-newyork.org*

Fordham Murdy ..... Evening Program Director • *fmurdy@rmh-newyork.org*

Antonio Neto ..... Executive Assistant to the President's Office & Office Manager  
*aneto@rmh-newyork.org*

Jim Rooney ..... Evening Manager • *jrooney@rmh-newyork.org*

Stephen Yarri ..... Controller • *syarri@rmh-newyork.org*

“The value of a man resides in what he gives and not in what he is capable of receiving.”

— Albert Einstein

Since its founding in 1978, Ronald McDonald House® New York and its nearly 30,000 guests — children who are battling pediatric cancer and their caregivers — have been the grateful beneficiaries of generous giving, which is one of the most powerful acts on earth.

We extend our sincere gratitude to everyone who has supported the House and our guests through financial contributions, in-kind donations, time, energy and love.

Now, as we move forward, we invite you to please consider supporting our programs, services and operations, all of which benefit our guests. There are many ways you can help. We welcome direct financial donations, which provide shelter, compassion and assistance that nurture hope and recovery.

Individuals and corporations are invited to join the Adopt-the-House Program as a means to make a greater impact at Ronald McDonald House New York. This initiative offers a unique way to honor, recognize or memorialize loved ones, friends or businesses on a beautiful room plaque and bring hope to the families staying at Ronald McDonald House New York. Donations through the Adopt-the-House Program support the refurbishment, furnishings and programs projects of the House. Your gift will improve the atmosphere created for these special kids and their families. One of the most profoundly meaningful ways to celebrate the life of a loved one is to honor him or her with a leaf on The

## Join the Vivian Harris Society

Tree of Life wall sculpture, a vibrant symbol of life, strength and the endurance of love. Each purchased leaf is engraved with the loved one’s name as well as a message and placed on the tree. We also present a beautiful glass tile to the appropriate person or their family, acknowledging The Tree of Life gift.

An immeasurably important part of Ronald McDonald House New York’s success lies in the extraordinary generosity of people like the late Vivian Harris, our founder, and others who have sought to ensure that their legacy of giving would continue to help families in need for years to come.

The Vivian Harris Society was established to honor and thank Mrs. Harris and all the others who made a planned gift of a charitable bequest in their will, a gift of life insurance, life income gifts, or retirement and pension gifts. We invite you to join the Vivian Harris Society by making a gift to the House in your estate or retirement planning.

For information about these and other ways to support Ronald McDonald House New York, please contact Nikki Soteropoulos Margarites, Director of Major Gifts, at (212) 639-0207 or [nmargarites@rmh-newyork.org](mailto:nmargarites@rmh-newyork.org) or visit [www.rmh-newyork.org](http://www.rmh-newyork.org).



A moment in time, the picture of total health. Help us to make this a reality for all of our children.



# Vivian Harris Society Members

Leonora P. Addison  
Jeanne M. Base  
Helen Blaise  
Morton Blick  
Grace Blumetti  
Margaret M Burrows  
Angela Carbone  
Kendall Carter  
Carol & Barry Cott  
Pearl Crescenti  
Arthur A. Daneri  
Margaret L. Duffy  
Barbara S. Duncan  
Margot Ammann Durrer  
Angelo and Filomena Ferrara  
Nicholas Fortunato  
Joseph Fursa  
Erika Geidenberger  
Esther B. Goldsmith  
Iris Goodgold  
John E. Gorman  
Shirlene Gray  
Rochelle Green  
Abraham J. Gross  
Evelyn Gross  
Anne E. Guidera  
Victoria Gulino  
Dorothy McMeekan Hierl  
Frank H Huber  
Barbara S. Jonas  
Lawrence Kastin  
Mary V. Kelly  
Joan Kroc  
John G. Krom  
Margaret Kunitsky  
Doris Kurzius  
Kenneth G. Langone  
Elvera Leonetti

Daisly Ludwig  
Michael O. Magdol  
Betty Marks  
Ann McHugh  
Ruth Messias  
Myra Meyer  
Elvira Milanese  
James F.X. Mullen  
Anthony F. Murray  
Karen A. Nassauer  
Estelle Newton  
Shirley Olivadoti  
Olsen Living Trust  
Rosalie Pataro  
Marion Pincus  
Mary Brown Power  
Ryan Renteria  
Edith Rivera  
Helena Russo  
Catherine Savage  
Robert Schlenger  
Wilma J. Schwartz  
Wilma Schwartz  
Jon Lawrence Shevell  
Lynda L. Smith  
Carol Soling  
Susan Sondheimer  
Margaret Sorensen  
Edward Sorkin  
Joseph H. Spigelman  
William T. Sullivan  
Esther Stern  
Christine Taylor  
John F. Waitz  
Stanley Weglarski  
Julia H. Witt  
Marilyn M. Wolf

### **Editorial Directors**

Natalie Greaves  
Douglas Clark

### **Art Director**

Erika Ladanyi

### **Photography**

Nina Friedman  
Natalie Greaves  
Charles Manley

**Production and Printing  
Generously Provided At No  
Cost to the Organization by**



**Cenveo®**



We are especially grateful to Ms. Kathy Presto of Williams Lea for her generous contributions toward the production of the 2012 annual report.



**RONALD MCDONALD  
HOUSE® NEW YORK**

405 East 73rd Street  
New York, NY 10021



[www.rmh-newyork.org](http://www.rmh-newyork.org)  
[Facebook.com/rmhnewyork](https://www.facebook.com/rmhnewyork)  
[Twitter.com/rmhnewyork](https://twitter.com/rmhnewyork)