

BELT GRINDER

Model: S-75/150



Operation Manual

Technical data:

	S-75	S-150	S-150A
Motor (kW)	3.00	2.2/2.8	3.00
Contact Wheel (mm)	200x75	250x150	200x150
Steering Roller (mm)	225x75	250x150	225x150
Flat Grinding (mm)	530	530	530
Belt Size (mm)	2000x75	2000x150	2000x150
Belt Speed (m /sec.)	34	18/37	34
Working Height (mm)	475-1240	475-1240	475-1240
Weight (kg)	75	105	95
Packing(cm)	115x57x57	115x65x65	115x65x65

Installation:

The machine is delivered in a wooden case. The machine should be placed on a level surface and secured by bolts through the four base plate holes.

Check the following functions:

- A) The belt moves freely.
- B) The belt does not touch the grinding supports.

Connection to electricity supply:

The S Belt Grinder has to be wired in by a competent electrician. The 3.0 kW motor is supplied with an Overload Protection Switch and no-voltage release for direct connection to 3 x 400/415 V or 3 x 230 V, 50/60Hz. The connection is only to be done with a 4-core cable (1.5 mm²) short cable with plug, making a total electric interruption possible. Fuse 16A (Please see enclosed electrical data sheet).

Belt tracking:

When first starting the machine, the belt may not run centrally on the contact wheel. This is corrected by turning the tracking adjuster (6):

- Clockwise - Belt moves towards the left.
- Anticlockwise- Belt moves towards the right.

Changing the belt:

- a) Switch off the machine.
- b) Ensure the belt is at a complete standstill.
- c) Remove the spark trap (1).
- d) Open the side cover (12) by turning the handle.
- e) Slacken the belt by moving the belt tension release lever (7) downwards.
- f) Replace the belt. Note correct direction of rotary of the belt.
- g) Tighten the belt by moving the belt tension release lever (7) upwards.
- h) Close Side Cover (12) and re-mount Spark Trap (1).

Operation of Belt Grinder:

Eye protection and earplug are to be worn at all times.

Contact Grinding:

When grinding against the contact wheel (3), ensure that the belt guard (5) is closed. The operator faces the contact wheel (3) and holds the material to work up, with both hands. Hands must be placed away from the place to be grinded, as the material will be warm during the operation. The material is pushed against the belt, resting on the grinding support (2), if necessary. The material is turned and grinded on the required surfaces.

Surface Grinding:

The operator faces the open belt guard (5) during surface grinding. The material is held with both hands and is pushed hard against the top work support (4) the grinding foundation under the belt has to be clean.

Height adjustment:

Loosening clamp no.9 with an Allen key can do height- and angle adjustment.

Routine maintenance:

Frequent cleaning, if necessary with compressed air so that wheel swarf is removed. Normal maintenance of the contact wheel and the steering roller. A commendable surface grinding can only be obtained when using a completely clean grinding foundation. Otherwise this must be renewed. The belt must be replaced as required, compare "Changing the belt" . Spark trap must be emptied frequently.

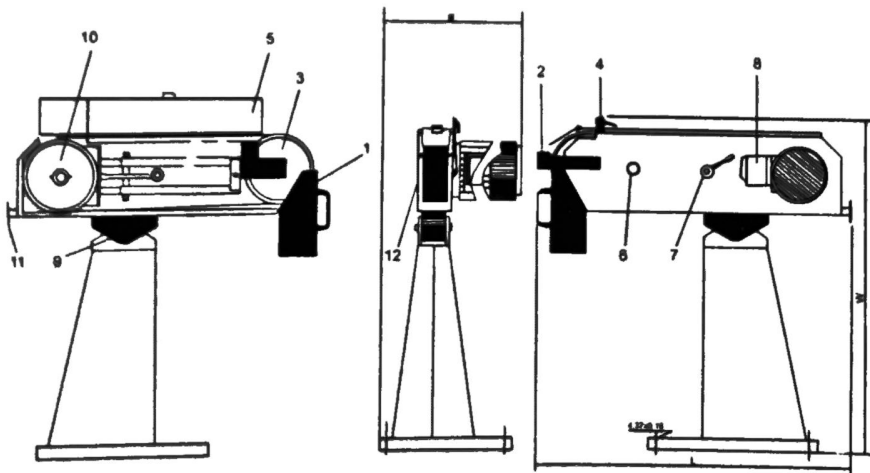
Special accessories:

Exhaust with dust bag (Electric connection to the overload protection switch (8)).

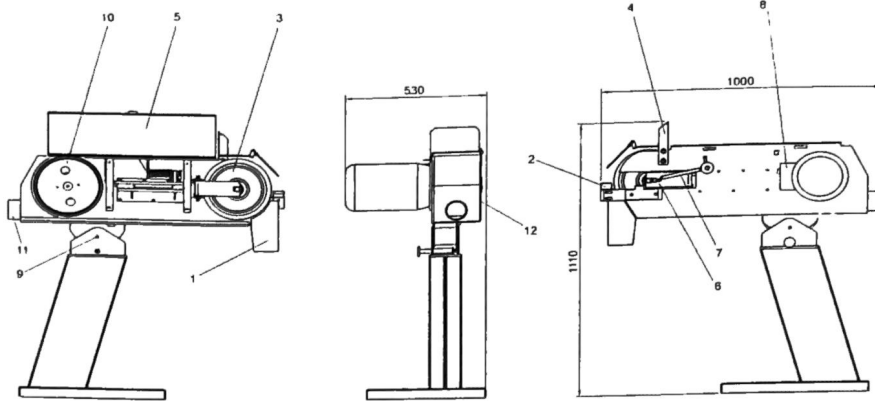
Position number:

- | | |
|-----------------------|--|
| 1. Spark trap | 7. Belt tension release lever |
| 2. Front work support | 8. Overload protection switch |
| 3. Contact wheel | 9. Clamp for angle & height adjustment |
| 4. Top work support | 10. Steering roller |
| 5. Belt guard | 11. Flange for motorized exhaust |
| 6. Tracking adjuster | 12. Side cover |

S-75/S-150A



S-150



Noise level measurement for Belt Grinders:

RESULT S-75/S-150A

Sound power of the machine:

A: No load (idle) with exhaustion

B: When grinding flat bar 50x15 with exhaustion

Hz	63	125	250	500	1K	2K	4K	A-Distance
A LWa	73	76	91	82	85	88	88	93
B LWa	70	74	86	81	84	88	91	93

Noise level on the place of operation:

A: 85 dB (A) no loaded (idled) with exhaustion

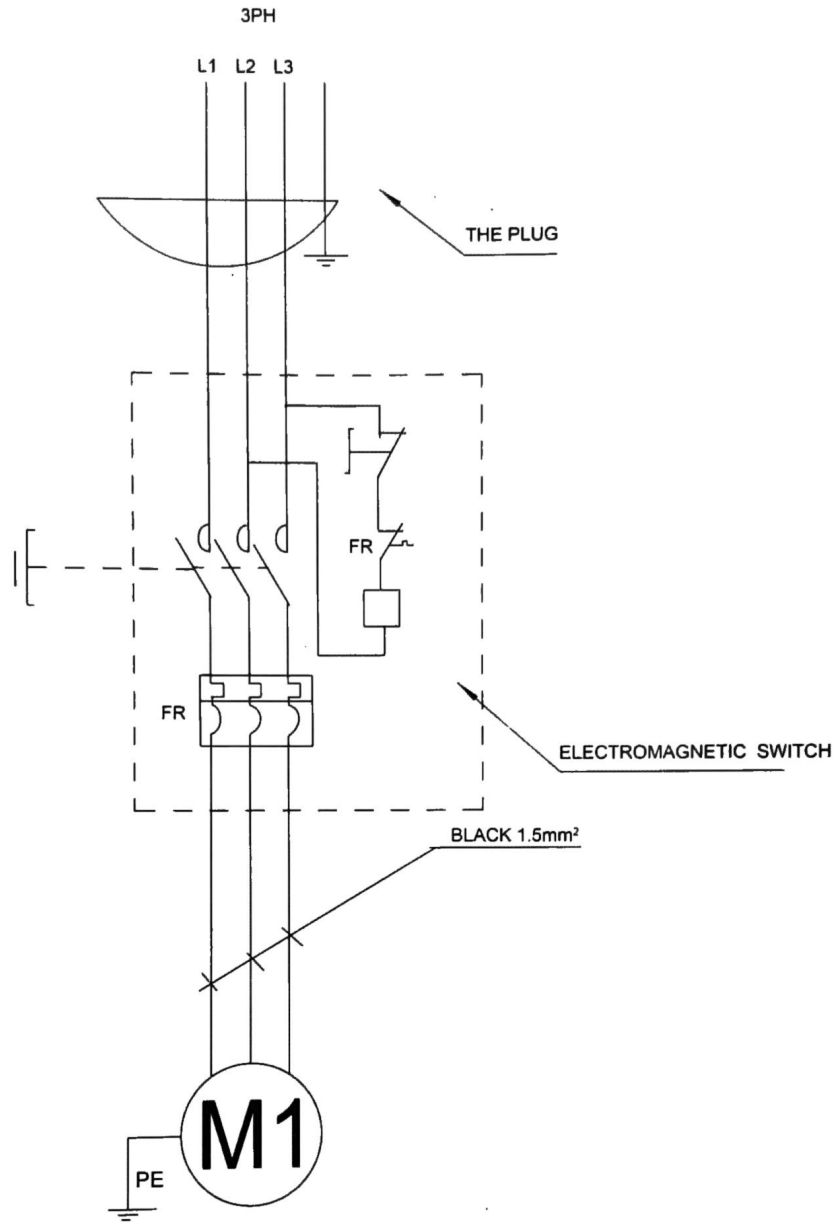
B: 88 dB (A) loaded with exhaustion

RESULT S-150

Noise level of the machine when grinding flat bar 50x15

Hz	63	125	250	500	1K	2K	4K	A-Distance
LWa	73	74	80	84	86	89	90	96

Noise level on the place of operation: 90 dB (A)

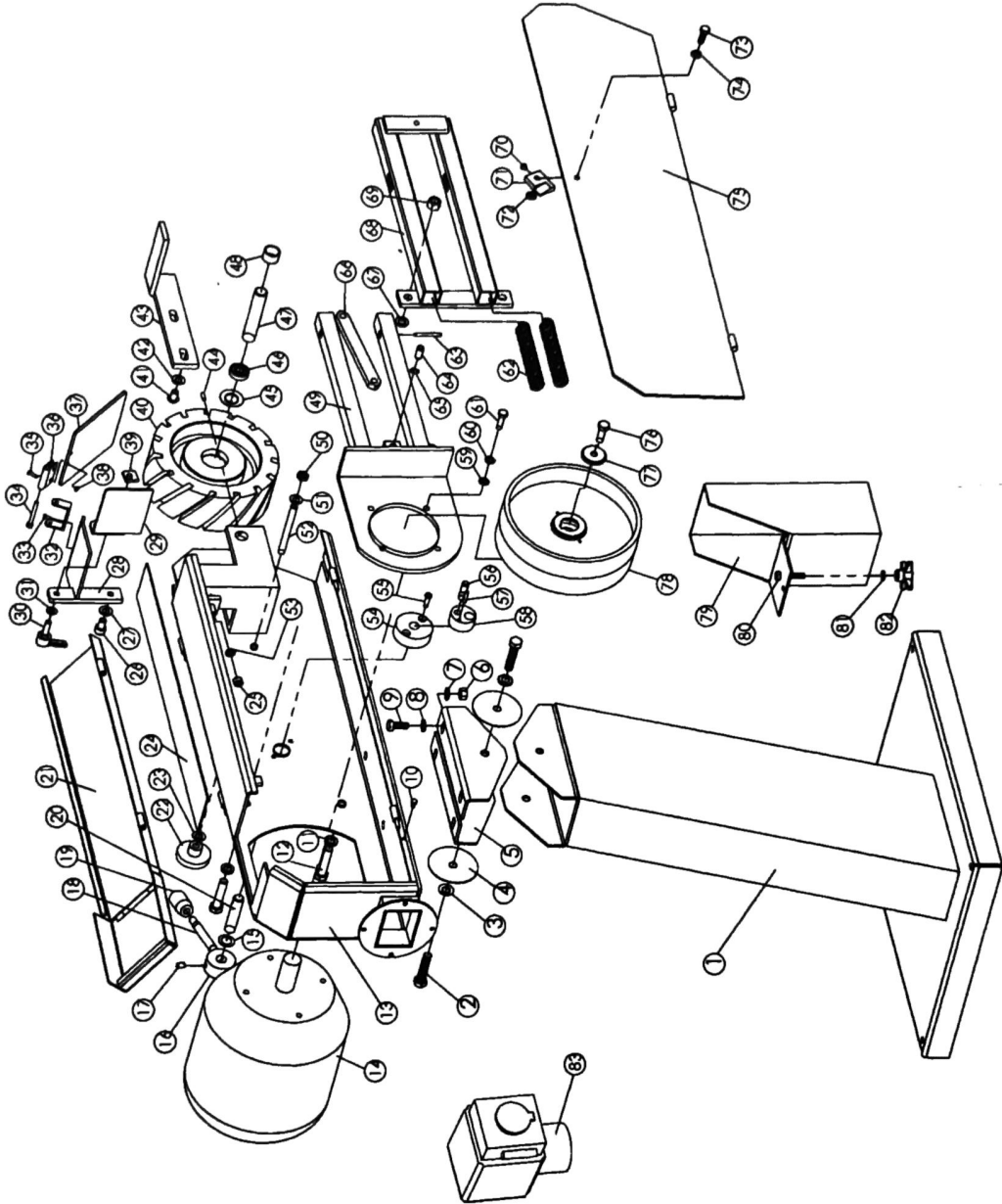


6		S-75 S-150 S-150A	Drawn
5			Checked
4			
3		Circuit diagram	Diagram No.
2			
1			

Parts List (S-75/S-150A)

Part #	Description	Q'ty	Part #	Description	Q'ty
1	Stand	1	43	Work Support	1
2	Hex. Screw M12x30	2	44	Screw M5x16	1
3	Washer	2	45	Stop Ring	2
4	Paper Spacer	2	46	Bearing	2
5	Clamp for angle & height adjustment	2	47	Shaft	1
6	Nut M10	4	48	Spacer	2
7	Washer	4	49	Motor Support	1
8	Washer	4	50	Nut	1
9	Hex. Screw M10x20	4	51	Butterfly Spring	1
10	Hex. Screw M5x10	2	52	Screw Bar	1
11	Washer	2	53	Washer	2
12	Hex. Screw M12x50	2	54	Base	1
13	Body	1	55	Screw M6x25	2
14	Motor	1	56	Shaft	1
15	Washer	1	57	Elasticity Pin	1
16	Belt Tension Release Base		58	Eccentric Wheel	1
17	Inner Hex. Screw M8x20	1	59	Washer	4
18	Belt Tension Release Lever	1	60	Bolt M8x22	4
19	Sleeve	1	61	Spring	2
20	Shaft	1	62	Spring	2
21	Belt Guard	1	63	Elasticity Pin	2
22	Tracking Adjust Knob	1	64	Pin Shaft	1
23	Washer	1	65	Stop Ring	3
24	Graphite Layer	1	66	Draw Bar	1
25	Nut	2	67	Butterfly Spring	12
26	Hex. Screw M10x15	3	68	Support	1
27	Washer	2	69	Belt Adjustment Device	
28	Top Work Support	1	70	Screw	1
29	Top Work Support Plate	1	71	Protect Buckle	1
30	Lock Handle	1	72	Nut	2
31	Washer	1	73	Screw M10x25	1
32	Eye Protector Base	1	74	Washer	1
33	Screw M5x8	2	75	Side Cover	1
34	Hex. Screw M5x50	1	76	Bolt M10x30	1
35	Screw M4x12	2	77	Washer	1
36	Eye Protector Binder	1	78	Steering Wheel	1
37	Eye Protector	1	79	Spark Trap	1
38	Nut M4	2	80	Bolt M8x15	1
39	Block With Thread	1	81	Washer	1
40	Contact Wheel	1	82	Knob	1
41	Hex. Screw M10x15	2	83	Overload Protection Switch (Only available for CE)	1
42	Washer	2			

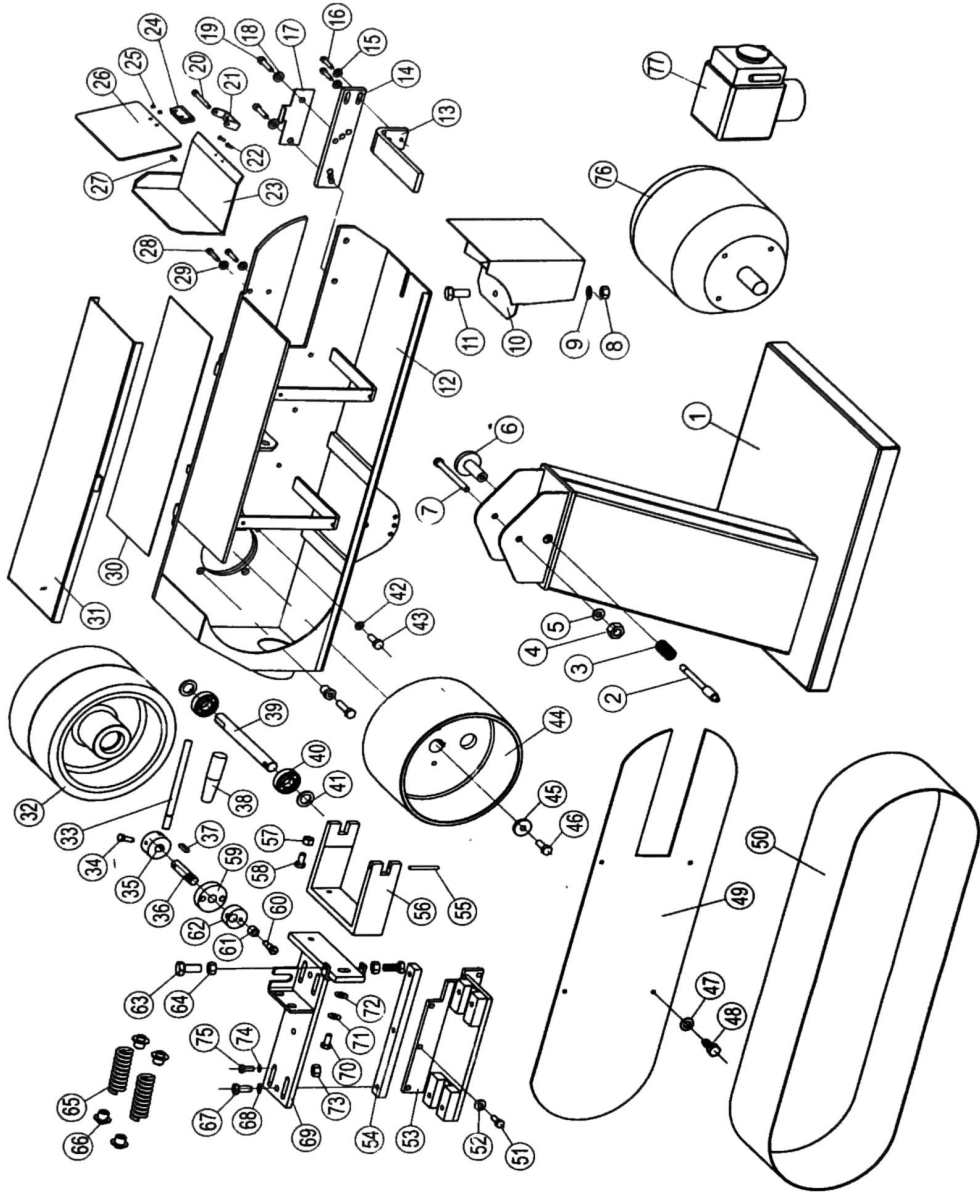
S-75/S-150A



Parts List (S-150)

Part #	Description	Q'ty	Part #	Description	Q'ty
1	Stand	1	40	Bearing 802404	2
2	Pin	1	41	Stop ring	2
3	Spring	1	42	Spacer	2
4	Nut Mx10	1	43	Bolt M8X30	2
5	Washer 10	2	44	Steering wheel	1
6	Handle	1	45	Washer	1
7	Bolt M10X120	1	46	Bolt M10X35	1
8	Nut M8	1	47	Washer 6	4
9	Washer 9	2	48	Bolt M6X16	4
10	Spark trap	1	49	Side cover	1
11	Bolt M8X16	1	50	Belt 2000x150	1
12	Body	1	51	Bolt M8X20	6
13	Work support	1	52	Spring washer 8	6
14	Top work support plate	1	53	Support	1
15	Washer 8	2	54	Draw bar	1
16	Bolt M8X20	2	55	Pin shaft	1
17	Limiting position plate	1	56	Support of contact wheel	1
18	Washer 10	2	57	Nut M8	1
19	Bolt M10X25	2	58	Bolt M8x30	1
20	Bolt M5X50	1	59	Fixing base	1
21	Eye protector base	1	60	Bolt	1
22	Bolt M4X12	2	61	Knot	1
23	Cover plate	1	62	eccentric wheel	1
24	Eye protector binder	1	63	Bolt M8X30	2
25	Nut M4	2	64	Nut M8	2
26	Eye protector	1	65	Spring	2
27	Bolt M4X12	2	66	Supporting knot	4
28	Bolt M8X16	2	67	Bolt M10X25	3
29	Washer 8	2	68	Spring washer 10	3
30	Graphite layer 475x160x1.5	1	69	Slip support	1
31	Belt guard	1	70	Nut M10X25	2
32	Contact wheel	1	71	Spring washer 10	2
33	Belt tension release lever	1	72	Washer 10	2
34	Bolt	1	73	Nut M10	4
35	Belt tension release base	1	74	Washer	4
36	Shaft	1	75	Bolt M10X55	4
37	Key 5X20	1	76	Motor 3kw 2800r/min	1
38	Handle	1	77	switch	1
39	Shaft	1			

S-150



Note: This manual is only for your reference. Owing to the continuous improvement of the machine, changes may be made at any time without obligation on notice. And please note the local voltage while operating this electric machine.