

pom
pom

No.48
ISSUE
GUIDE



Middlebrooks

Pattern by
Marie Régnier

Yarn
Julie Asselin Leizu DK





Marie Régnier

Middlebrooks

One Size:

163.5cm / 64¼" long x 22cm / 8¾" wide

Yarn:

Julie Asselin Leizu DK (DK-weight; 90% superwash Merino wool, 10% silk; 238m / 260yds per 115g skein)

Shades:

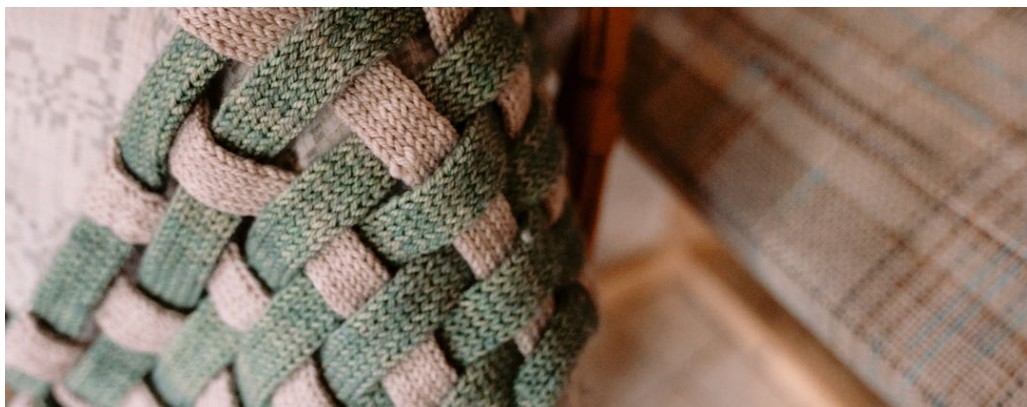
Yarn A: Avril; 4 skeins

Yarn B: Biscotti; 3 skeins

OR approx:

Yarn A: 780m / 853yds of DK-weight yarn.

Yarn B: 580m / 635yds of DK-weight yarn.



Rya

Pattern by
Susan Lin / Yeonee Makes

Yarn
Schoppel Wolle Admiral Stärke 6
+ Zauberball Crazy





Susan Lin / Yeonee Makes

Rya

Sizes: 1 (2, 3, 4, 5, 6, 7, 8)

Finished chest (fullest point) circumference:
110.5 (120, 130, 140, 153, 162.5, 172, 182)cm
/ 43½ (47½, 51¼, 55, 60, 64, 68, 71¾)" – to be
worn with 25-35cm / 10-14" positive ease
Sharde's height is 170cm / 5' 7" with a chest
(fullest point) circumference of 104cm / 41",
and is shown wearing a size 4.

Yarn:

Schoppel Wolle Admiral Stärke 6
(fingering / 4-ply-weight; 75% superwash
wool, 25% nylon; 400m / 437yds per 150g ball)
Yarn A: Natural 980; 2 (2, 2, 2, 3, 3, 3) balls

Schoppel Wolle Zauberball Crazy (fingering /
4-ply-weight; 75% superwash wool, 25%
nylon; 420m / 459yds per 100g ball)
Yarn B: Lockstoff 2473; 1 (2, 2, 2, 2, 2, 2) balls

OR approx:

Yarn A: 603 (661, 722, 793, 856, 921, 988,
1068)m / 659 (723, 789, 867, 936, 1007, 1080,
1168)yds of fingering / 4-ply-weight yarn.
Yarn B: 413 (456, 500, 552, 598, 646, 694, 753)
m / 451 (498, 546, 603, 654, 706, 759, 823)yds
of fingering / 4-ply-weight yarn.



Ordito

Pattern by
Giuseppina Flamini

Yarn
The Yarn Juice 100% Merino Superwash (blue sample)
The Wandering Flock Baby Paca (pink sample)





Giuseppina Flamini

Ordito

Sizes: 1 (2, 3)

Finished foot circumference: 16.5 (19.5, 22)
cm / 6½ (7¾, 8¾)" - to be worn with 4-6.5cm /
1½-2½" negative ease

Rio wears a UK 7 / US 9 and is shown wearing
the blue sample in a size 2 and the pink sample
in a size 2.

Blue sample

The Yarn Juice 100% Merino Superwash
(fingering / 4-ply-weight; 100% Merino wool;
400m / 437yds per 100g skein)

Yarn A: Sand; 1 skein

Yarn B: Ad Astra; 1 skein

Pink sample

The Wandering Flock Baby Paca (sport-
weight; 50% extra fine superwash Merino
wool, 30% baby alpaca, 20%nylon; 365m /
400yds per 100g skein)

Yarn A: Beach Party; 1 skein

Yarn B: Electric Orchid; 1 skein

OR approx:

Yarn A: 200 (250, 310)m / 218 (273, 338)yds
of fingering / 4-ply-weight yarn.

Yarn B: 125 (150, 190)m / 136 (164, 207)yds
of fingering / 4-ply-weight yarn.



Convergence

Pattern by
Yessabett Bueno /
Creaciones Ananda

Yarn
Manos del Uruguay Feliz





Yessabett Bueno / Creaciones Ananda

Convergence

Sizes: 1 (2, 3, 4, 5, 6, 7, 8, 9, 10)

Finished chest (fullest point) circumference:
77 (93, 101, 109, 121, 133, 141, 153, 161, 173)
cm / 30¼ (36½, 39¾, 43, 47¾, 52¼, 55½, 60¼,
63½, 68)" – to be worn with 0-12.5cm / 0-5"
positive ease

Rio's height is 167.5cm / 5' 6" with a chest
(fullest point) circumference of 89cm / 35",
and is shown wearing a size 3.

Yarn:

Manos del Uruguay Feliz (sport-weight;
70% superwash Merino wool, 30% modal;
320m / 350yds per 100g skein)

Shades:

Yarn A: Petal (Z2149); 2 (2, 2, 3, 3, 3, 4, 4, 4, 5)
skeins

Yarn B: Lush (Z2324); 2 (2, 2, 2, 2, 3, 3, 3, 3, 3)
skeins

Yarn C: Lagoon (Z2333); 1 (1, 1, 2, 2, 2, 2, 2, 2,
3) skeins

OR approx:

Yarn A: 395 (514, 595, 669, 773, 882, 969,
1088, 1183, 1312)m / 432 (562, 651, 732, 846,
965, 1060, 1190, 1294, 1435)yds of sport-
weight yarn.

Yarn B: 340 (418, 466, 511, 575, 643, 694, 767,
822, 900)m / 372 (457, 509, 559, 629, 704, 759,
839, 899, 984)yds of sport-weight yarn.

Yarn C: 198 (257, 298, 335, 387, 441, 485, 544,
592, 656)m / 216 (281, 326, 366, 423, 483, 530,
595, 647, 718)yds of sport-weight yarn.



Roosie

Pattern by
Stine Hoelgaard

Yarn
Hobbii Friends Wool





Stine Hoelgaard

Roosie

Sizes: 1 (2, 3)

Finished hand circumference: 15.5 (17.5, 19) cm / 6¼ (7, 7¾)" - to be worn with 2.5cm / 1" negative ease Sample shown is size 2.

Yarn: Hobbii Friends Wool (worsted-weight; 100% wool; 100m / 109yds per 50g ball)

Shades:

Yarn A: Light Gray (117); 1 ball

Yarn B: Lilac (63); 1 ball

Yarn C: Cognac (17); 1 ball

OR approx:

Yarn A: 76 (82, 99)m / 83 (89, 109)yds of worsted-weight yarn.

Yarn B: 27 (29, 31)m / 30 (31, 33)yds of worsted-weight yarn.

Yarn C: 17 (18, 20)m / 19 (20, 22)yds of worsted-weight yarn.



Coverlet

Pattern by
Olivia Glennon

Yarn
Jamieson's of Shetland Spindrift





Olivia Glennon

Coverlet

Sizes: 1 (2, 3, 4, 5, 6, 7, 8, 9)

Finished chest (fullest point) circumference:
75.5 (86.5, 96.5, 107.5, 118, 129, 139.5, 150.5,
161.5) cm / 29¾ (34, 38, 42¼, 46½, 50¾, 55,
59¾, 63½)" - to be worn with approx. 0-5cm /
0-2" negative ease.

Rio's height is 167.5cm / 5' 6" with a chest
(fullest point) circumference of 89cm / 35",
and is shown wearing a size 2.

Yarn:

Jamieson's of Shetland Spindrift (fingering /
4-ply-weight; 100% wool; 105m / 115yds per
25g ball)

Shades:

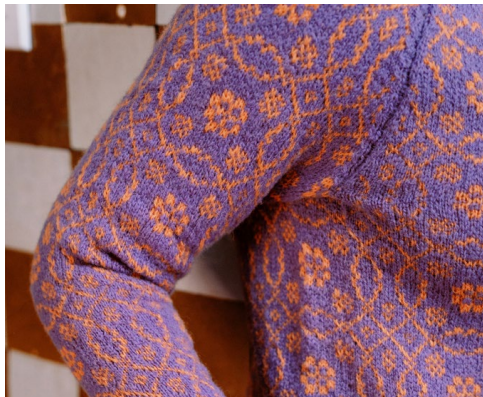
Yarn A: Anemone; 9 (10, 11, 12, 13, 14, 15, 17,
18) balls

Yarn B: Tangerine; 6 (7, 7, 8, 9, 10, 10, 11, 12)
balls

OR approx:

Yarn A: 885 (985, 1110, 1210, 1340, 1460,
1590, 1770, 1900)m / 965 (1074, 1210, 1319,
1461, 1591, 1733, 1929, 2071)yds of fingering /
4-ply-weight yarn.

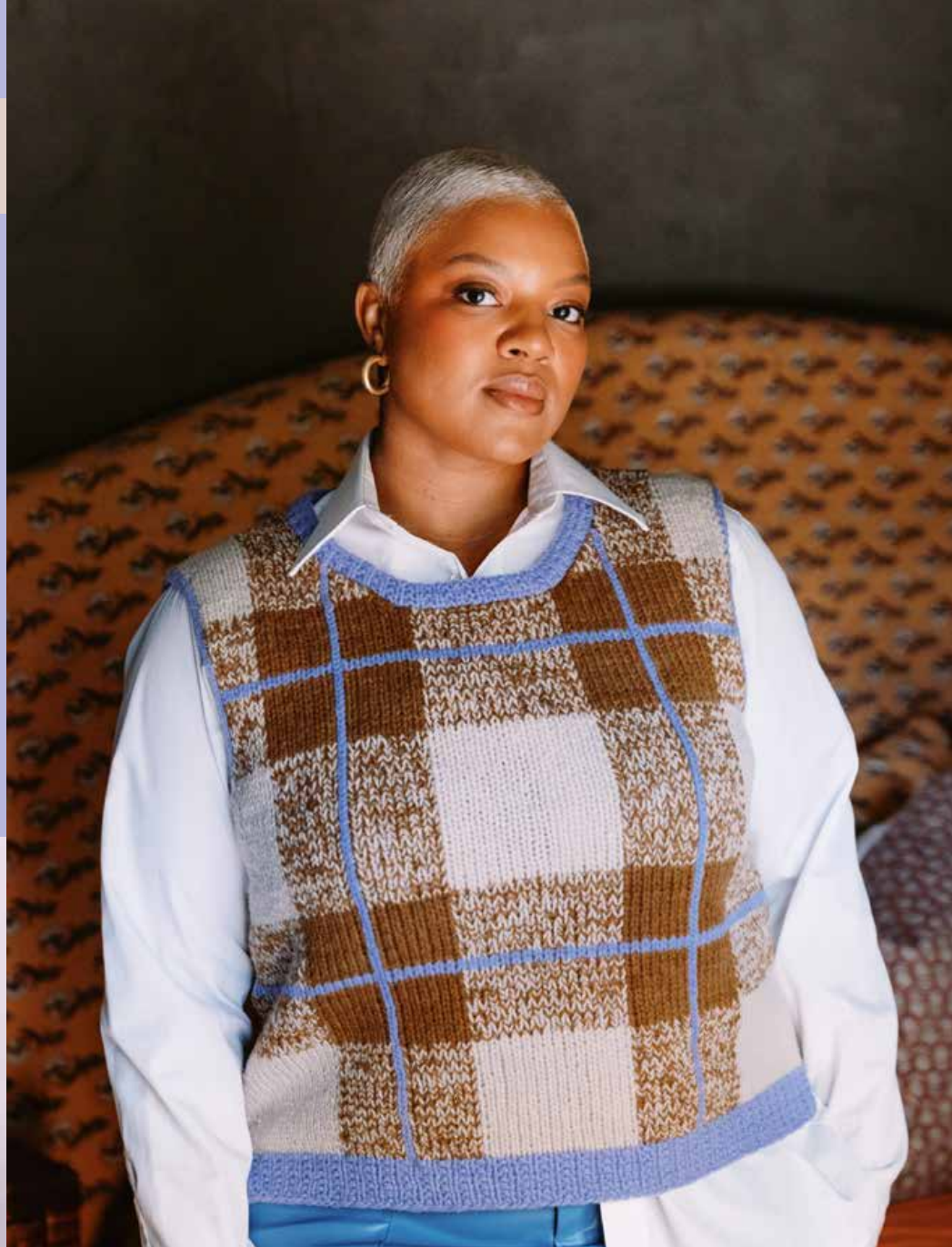
Yarn B: 590 (655, 740, 810, 900, 980, 1060,
1180, 1260)m / 643 (714, 807, 883, 981, 1068,
1155, 1286, 1373)yds of fingering / 4-ply-
weight yarn.



Tuskraft

Pattern by
Sara Ottosson / Handvärvat

Yarn
Mominoki Yarn German Merino Light





Sara Ottosson / Handvärvat

Tuskraft

Sizes: 1 (2, 3, 4, 5, 6, 7, 8, 9, 10, 11)

Finished chest (fullest point) circumference:

81.5 (90.5, 99.5, 108.5, 117.5, 126, 135, 144, 153, 161.5, 170.5)cm / 32¼ (35¾, 39¼, 42¾, 46½, 49¾, 53¼, 56¾, 60¼, 63¾, 67¼)" to be worn with 0-12.5cm / 0-5" positive ease.

Sharde's height is 170cm / 5' 7" with a chest (fullest point) circumference of 104cm / 41", and is shown wearing a size 5.

Yarn: Mominoki Yarn German Merino Light (sport-weight; 100% Merino wool; 340m / 372yds per 100g skein)

Two-Colour Version

Shades:

Yarn A: Lavender; 2 (2, 2, 2, 2, 3, 3, 3, 3, 3, 3) skeins

Yarn B: Milk Tea; 2 (2, 2, 2, 2, 2, 2, 3, 3, 3, 3) skeins

OR approx:

Yarn A: 500 (550, 610, 610, 670, 740, 740, 840, 840, 860, 940)m / 555 (605, 670, 705, 740, 815, 815, 920, 920, 990, 1035)yds of sport-weight yarn.

Yarn B: 460 (480, 550, 570, 580, 650, 670, 740, 750, 770, 840)m / 505 (525, 605, 625, 635, 715, 735, 810, 825, 845, 920)yds of sport-weight yarn.

Three-Colour Version

Yarn A: Lavender; 1 skein

Yarn B: Milk Tea; 2 (2, 2, 2, 2, 2, 2, 3, 3, 3, 3) skeins

Yarn C: Ochre; 1 (1, 2, 2, 2, 2, 2, 2, 2, 2, 2) skeins

OR approx:

Yarn A: 170 (210, 210, 240, 240, 280, 280, 310, 310, 310, 340)m / 190 (230, 230, 265, 265, 310, 310, 340, 340, 340, 375)yds of sport-weight yarn.

Yarn B: 460 (480, 550, 570, 580, 650, 670, 740, 750, 770, 840)m / 505 (525, 605, 625, 635, 715, 735, 810, 825, 845, 920)yds of sport-weight yarn.

Yarn C: 330 (340, 400, 400, 430, 460, 460, 530, 530, 550, 600)m / 365 (375, 440, 440, 475, 505, 505, 580, 580, 650, 660)yds of sport-weight yarn.



Selvedge

Pattern by
Julia Wilkens

Yarn
Knitting for Olive Merino





Julia Wilkens

Selvedge

One size: 140cm / 55" long x 40cm / 15¾" wide, excluding fringe

Yarn: Knitting for Olive Merino (fingering / 4-ply-weight; 100% Merino wool; 250m / 273yds per 50g ball)

Shades:

Yarn A: Flamingo; 1 ball

Yarn B: Wild Berries; 1 ball

Yarn C: Mustard; 1 ball

Yarn D: Quince; 1 ball

Yarn E: Slate Grey; 1 ball

Yarn F: Marzipan; 1 ball

OR approx:

Yarn A: 250m / 273yds of fingering / 4-ply-weight yarn.

Yarn B: 205m / 224yds of fingering / 4-ply-weight yarn.

Yarn C: 185m / 202yds of fingering / 4-ply-weight yarn.

Yarn D: 175m / 191yds of fingering / 4-ply-weight yarn.

Yarn E: 185m / 202yds of fingering / 4-ply-weight yarn.

Yarn F: 140m / 153yds of fingering / 4-ply-weight yarn.

Note: In sample shown, yarn A and D are lighter shades of yarn B and C respectively.



Tapestry

Pattern by
Jule Kebelmann

Yarn
Erika Knight British Blue Wool (pink + blue sample)
Kelbourne Woolens Germantown (mint + black sample)





Jule Kebelmann

Tapestry

Sizes: 1 (2, 3)

Finished circumference: 47 (55, 62.5)cm /
18½ (21½, 24½)" – to be worn with 2.5-7.5cm
/ 1-3" negative ease

Pink + Grey Sample

Yarn: Erika Knight British Blue Wool (DK-
weight; 100% wool; 55m / 60yds per 25g skein)

Shades:

Yarn A: Dance (112); 2 skeins

Yarn B: French (104); 1 skein

Yarn C: Sea Fret (114); 1 skein

Mint + Black Sample

Yarn: Kelbourne Woolens Germantown
(worsted-weight; 100% North American wool;
201m / 220yds per 100g skein)

Shades:

Yarn A: Black (005); 1 skein

Yarn B: Jade (338); 1 skein

Yarn C: Natural (105); 1 skein

OR approx:

Yarn A: 75 (85, 100)m / 82 (93, 110)yds of
DK-weight yarn.

Yarn B: 25 (30, 35)m / 27 (33, 38)yds of
DK-weight yarn.

Yarn C: 20 (25, 30)m / 22 (27, 33)yds of
DK-weight yarn.

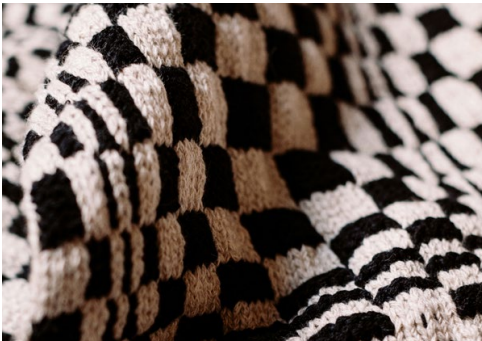


Fortuna's Wheel

Pattern by
Elspeth Vance

Yarn
Illimani Yarn Sabri II





Elsepth Vance

Fortuna's Wheel

Trousers

Sizes: 1 (2, 3, 4, 5, 6, 7, 8, 9)

Finished waist circumference: 61 (67.5, 77.5, 87.5, 98, 108, 118, 128.5, 138.5)cm / 24 (26½, 30½, 34½, 38½, 42½, 46½, 50½, 54½)" – to be worn with 0-5cm / 0-2" negative ease.

Rio's height is 167.5cm / 5' 6" with an inseam length of 73.5cm / 29", hip (widest point) circumference of 91cm / 36", waist circumference of 71cm / 28", and is shown wearing a size 2.

Yarn: Illimani Yarn Sabri II (worsted-weight; 85% organic cotton, 15% baby alpaca; 200m / 218yds per 100g skein)

Shades:

Yarn A: Marzipan; 4 (4, 4, 4, 5, 5, 6, 6, 6) skeins
Yarn B: No. 31; 4 (4, 4, 5, 5, 5, 6, 6, 6) skeins

OR approx:

Yarn A: 668 (686, 732, 791, 869, 951, 1024, 1097, 1143)m / 730 (750, 800, 865, 950, 1040, 1120, 1200, 1250)yds of worsted-weight yarn.
Yarn B: 686 (709, 754, 823, 896, 978, 1052, 1143, 1189)m / 750 (775, 825, 900, 980, 1070, 1150, 1250, 1300)yds of worsted-weight yarn.

Pullover

Sizes: 1 (2, 3, 4, 5, 6, 7)

Finished chest (fullest point) circumference: 117 (127, 135, 147, 157, 167, 177)cm / 46 (50, 53¼, 58, 62, 67, 71)" – to be worn with 25.5-38cm / 10-15" positive ease

Rio's height is 167.5cm / 5' 6" with a chest (fullest point) circumference of 89cm / 35", and is shown wearing a size 2.

Yarn: Illimani Yarn Sabri II (worsted-weight; 85% organic cotton, 15% baby alpaca; 200m / 218yds per 100g skein)

Shades:

Yarn A: Marzipan; 4 (4, 4, 5, 5, 5, 6) skeins
Yarn B: No. 31; 4 (4, 4, 5, 5, 5, 6) skeins

OR approx:

Yarn A: 691 (740, 783, 846, 928, 982, 1070)m / 756 (809, 856, 925, 1015, 1074, 1170)yds of worsted-weight yarn.
Yarn B: 676 (723, 765, 827, 908, 960, 1046)m / 739 (791, 837, 904, 993, 1050, 1144)yds of worsted-weight yarn.

