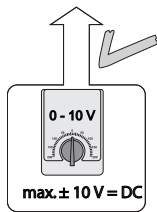
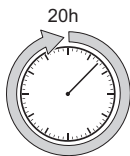
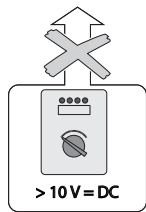


Modell des Schienenbusses

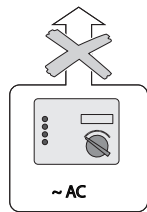
88311



max. $\pm 10\text{ V} = \text{DC}$

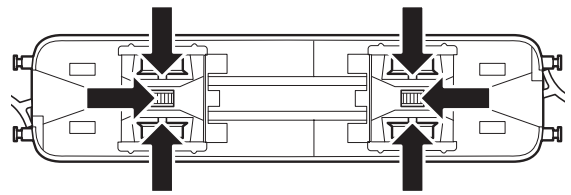
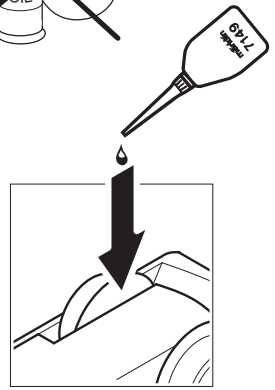


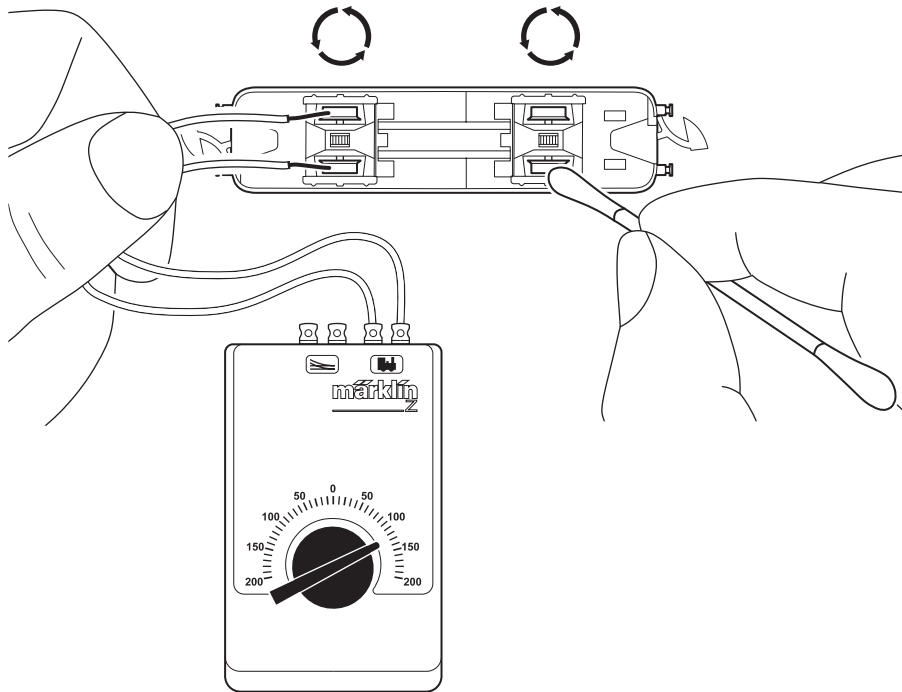
$> 10\text{ V} = \text{DC}$

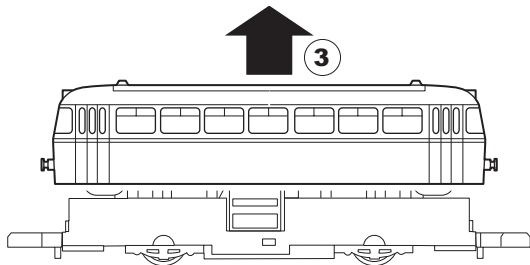
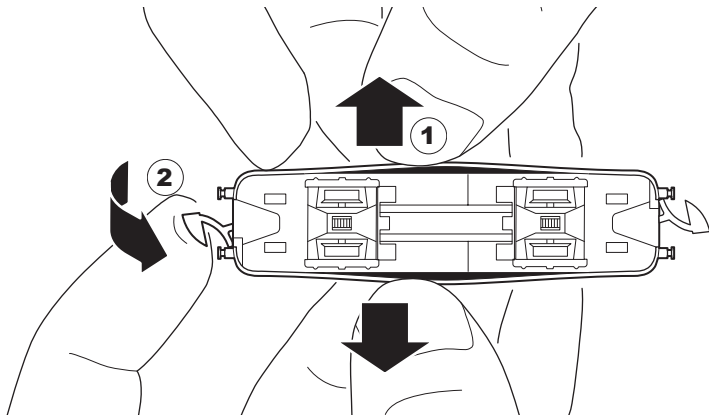


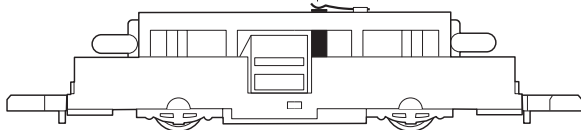
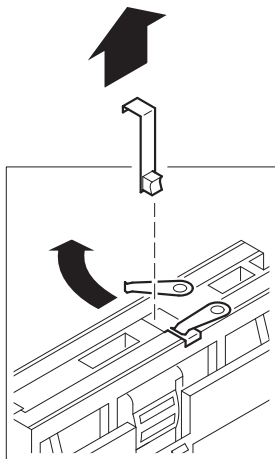
$\sim \text{AC}$

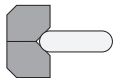
- 67011
- 67020 + 67030
- 67201
- 67271



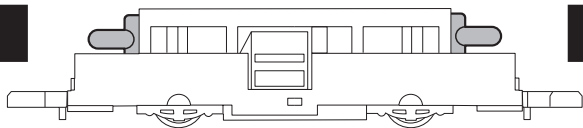
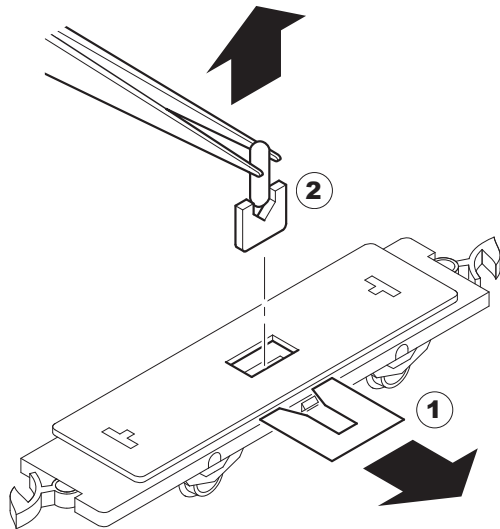
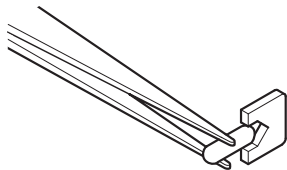




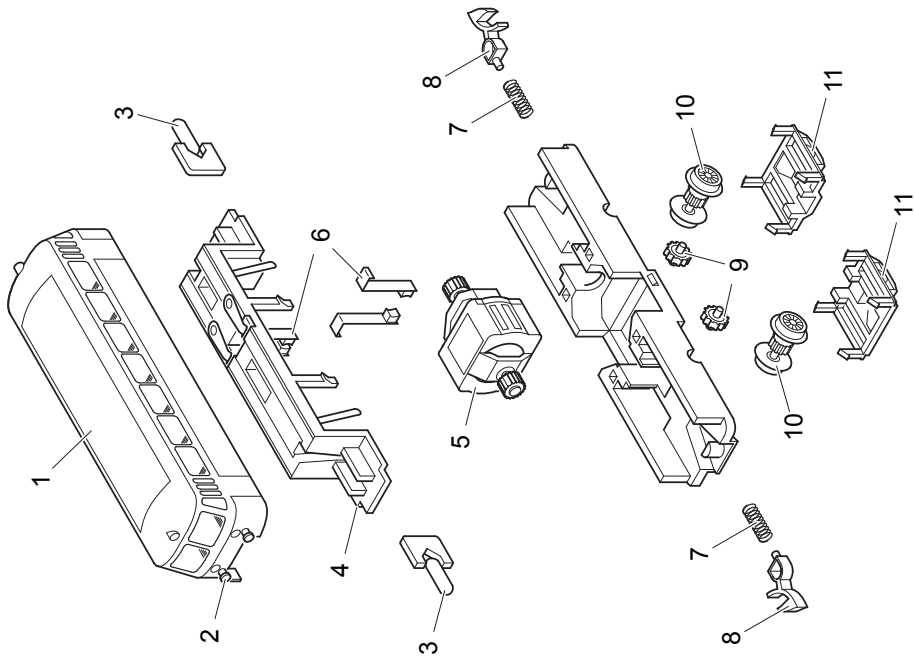




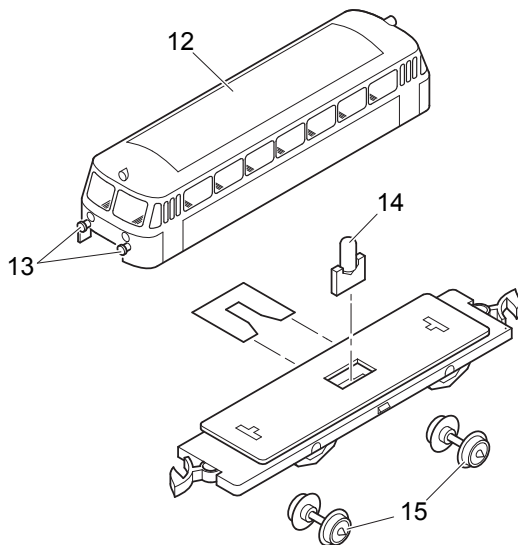
8953



6



1 Aufbau	111 782
2 Puffer	262 130
3 Beleuchtungseinsatz	8 953
4 Isolierung	262 080
5 Motor	209 452
6 Motorbürsten	89 881
7 Druckfeder	765 680
8 Kupplungshaken	704 200
9 Zwischenradsatz	260 640
10 Radsatz	217 424
11 Achslagerblende	262 060
12 Aufbau	111 784
13 Puffer	262 130
14 Beleuchtungseinsatz	8 953
15 Radsatz	215 721



Gebr. Märklin & Cie. GmbH
 Postfach 860
 D-73008 Göppingen
 www.maerklin.com

111787/0407/SmEf
 Änderungen vorbehalten
 © Gebr. Märklin & Cie. GmbH