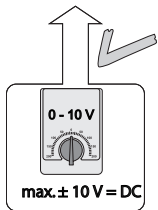


Modell der

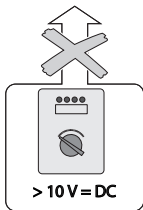
Commodore Vanderbilt

88075

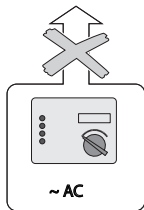


max. $\pm 10\text{ V} = \text{DC}$

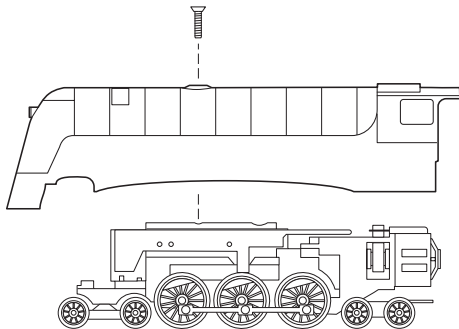
67011
67020 + 67030
67201
67271

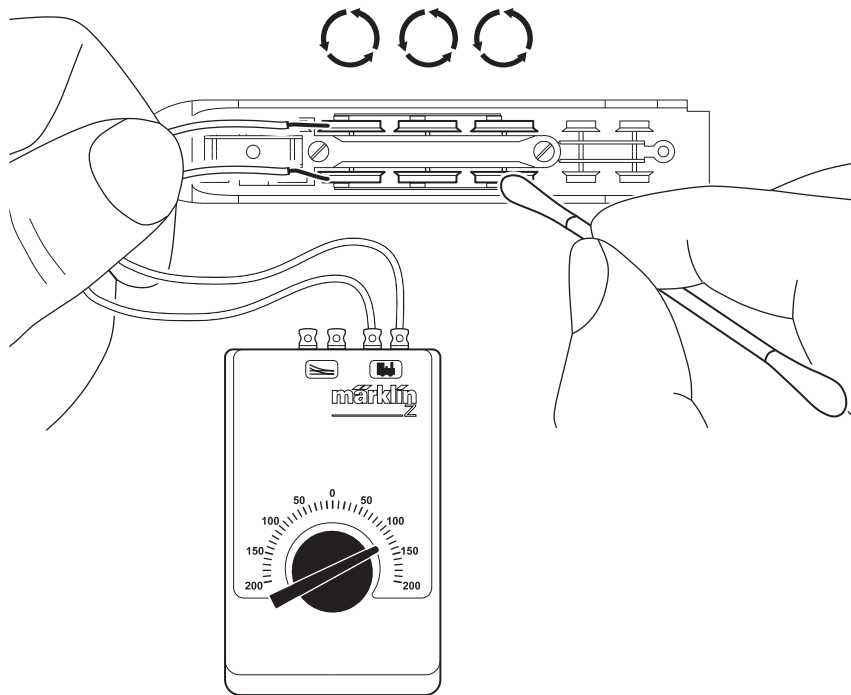


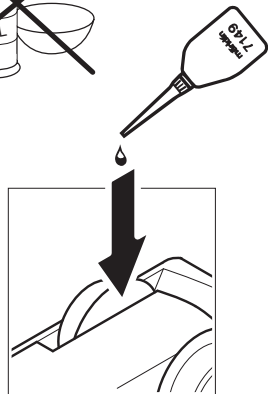
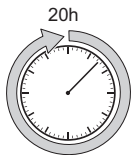
$> 10\text{ V} = \text{DC}$



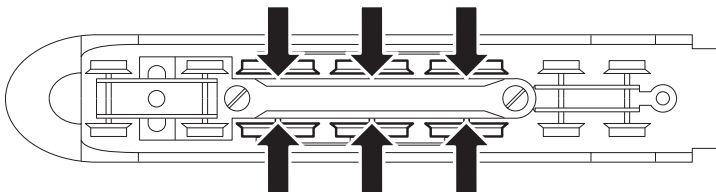
$\sim \text{AC}$

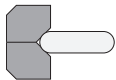




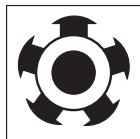
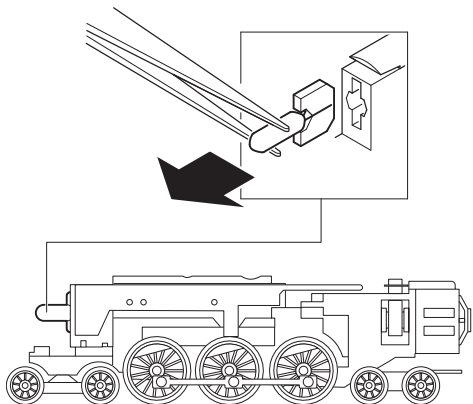


- Nur sparsam ölen (max. 1 Tropfen). Zuviel Öl führt häufig zum Verschmieren der Kollektoren und damit zur Beschädigung des Ankers.
- Oil sparingly (max. 1 drop). Too much oil frequently causes the commutator to become dirty and thereby leads to damage to the armature.
- Lubrifiez en très petite quantité (1 goutte max.). Trop d'huile entraîne souvent l'encrassement du collecteur et à des dommages à l'induit.
- Slechts spaarzaam oliën (max. 1 druppel). Te veel olie leidt vaak tot versmeren van de collector en daarmee tot beschadiging van het anker.

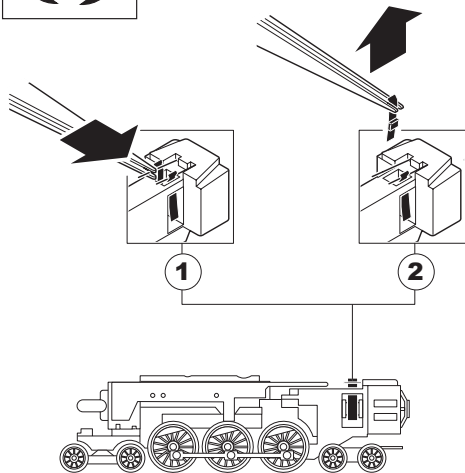


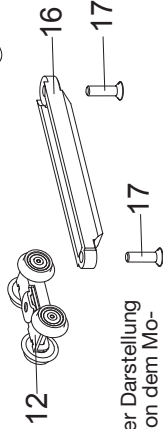
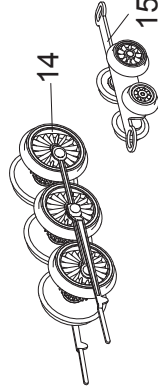
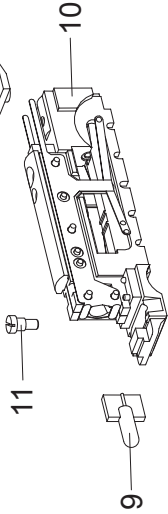
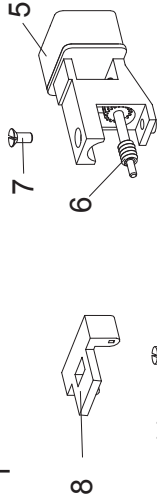
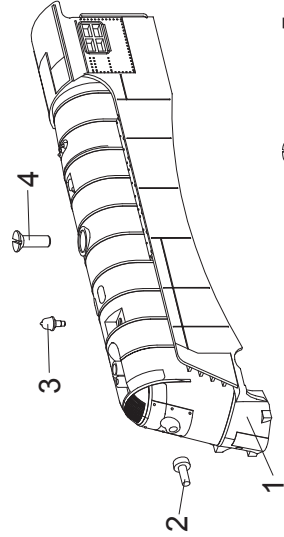


8953

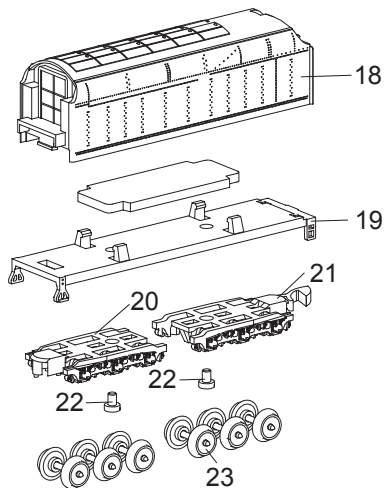


89891





Details der Darstellung
können von dem Mo-
dell abweichen



1 Lok-Aufbau (komplett)	117 734
2 Lichtkörper	117 737
3 Glocke	267 460
4 Senkschraube	19 8327 28
5 Motor	211 909
Motorbürsten	89 891
6 Antriebsschnecke	261 460
7 Senkschraube	19 8326 28
8 Zylinderblock	117 756
9 Beleuchtungseinsatz	8 953
10 Traggestell	117 753
11 Zylinderansatzschraube	753 130
12 Drehgestell vorne	117 622
13 Zwischenradsatz	261 280
14 Treibradsatz	110 431
15 Drehgestell hinten	117 727
16 Abdeckung	261 050
17 Senkschraube	785 570
18 Tender-Aufbau	117 742
19 Boden	117 744
20 Drehgestellrahmen vorne	227 592
21 Drehgestellrahmen hinten	113 748
22 Zylinderschraube	785 150
23 Radsatz	700 810

Details der Darstellung
können von dem Mo-
dell abweichen

Gebr. Märklin & Cie. GmbH
Postfach 860
D-73008 Göppingen
www.maerklin.com

117759/0507/SmEf
Änderungen vorbehalten
© Gebr. Märklin & Cie. GmbH

www.ajckids.com