

# NEW ITEMS <sup>Nº 1</sup> 2021



## 75 YEARS OF FALLER

Anniversary model »Bran Castle«

## THE WORLD OF SWISS RAILWAYS

Take the train to Bever and Zernez

## CAR SYSTEM DIGITAL

Major software update

## 2C MODEL WATER

Perfect water design



**BIG IN SMALL THINGS**

**H0**

**4**

Railway stations, railway buildings	4–8
Trade, business, industry	9–13
The town, the village	14–23
Promotional set	19
Scenic modelling   Accessories	24
Articles of the month	25
Miniature figures	26



**The Black Forest region goes global.**

The »Vogtsbauernhof« Black Forest Set brings together the most beautiful buildings constructed in the local building tradition.

Page 22.

**N**

**27**

The town, the village	27–28
Scenic modelling	28
Articles of the month   Accessories	29
Miniature figures	30

**Z**

**31**



**Wine growers and wine makers.**

Time to switch off from the hustle and bustle in a cosy atmosphere – at the »Vine-growing estate with Vinegrower's taverne«.

Page 27.

**KIRMES**

**32**

**CAR SYSTEM**

**34**

Car System Digital	34–35
Car System	36–37

**ANLAGENBAU**

**38**

Plants	38
Water	39
Lighting	40–41
Small parts in bag	42
Electronics   Tools	43

**Symbolism**

**Track gauge**

H0	1:87   16.5 mm	N	1:160   9 mm
TT	1:120   12 mm	Z	1:220   6.5 mm

**Periods**

Epoch I	1880 – 1920	Epoch IV	1978 – 1985
Epoch II	1921 – 1945	Epoch V	1986 – 2006
Epoch III	1946 – 1977	Epoch VI	2007 – today



130820

## »Bran« Castle

A proud castle fortress, a magnificent stately home, a haunted castle shrouded in mystery, and a fairy-tale landmark – a picturesque aura surrounds the medieval »Bran Castle«, awakening dreams and inspiration. Take a look at the limited-edition construction kit for FALLER's 75th anniversary on Page 14.

**Epoch I** - 490 x 325 x 415 mm



September  
2021

Advice and repair

## We'll adjust it

Always the right contact: no matter whether you have any question regarding the product or need professional maintenance – we shall be pleased to be of assistance by e-mail or on the phone.

E-mail: [kundendienst@faller.de](mailto:kundendienst@faller.de)

Phone: +497723 651-106

### Technical service

E-Mail: [technischer-kundendienst@faller.de](mailto:technischer-kundendienst@faller.de)

Phone: +497723 651-241

### Service hours:

Mondays – Thursdays: 9 am – 14 pm

Fridays: 9 am – 12 am

Workshops 2021

## Let's tackle it together!

**Know-how on site:** On our premises in Gütenbach we shall show you how thrilling and diversified scale modelling can be. Model layout, Car System or Car System Digital: in our workshops newcomers and advanced modellers will learn from experienced professionals, and will take home useful tips for their project. Just book a place now – and take part!

### Car System Digital

April 23 – 24, 2021

October 15 - 16, 2021

### Layout Construction

June 18 - 20, 2021

October 22 - 24, 2021

### Car System Digital vehicle conversion

April 26 - 27, 2021

October 18 - 19, 2021

### Layout Construction

**Topic: Backyards**

March 5 - 7, 2021

**Topic: Castle ruin**

September 3 - 5, 2021

### Car System Basis

June 11 - 13, 2021

**Topic: Snow**

November 12 - 14, 2021


You can find other workshop dates and the registration form at [www.faller.de](http://www.faller.de)

Online

## Where you can find us

**On our online platform, you will find regular updates and stories,** helpful videos as well as all kinds of tips and tricks regarding the wonderful hobby of model making. Come and check it out – we look forward to hearing from you!

 [www.facebook.com/faller.de](http://www.facebook.com/faller.de)

 [www.instagram.com/gebrfaller](http://www.instagram.com/gebrfaller)

 [www.youtube.com/user/GebrFaller](http://www.youtube.com/user/GebrFaller)

Hobby

## All beginnings are easy

**The »HOBBY« series** – which is designed not only for beginners – contains easy-to-build models at low prices. For the 75th anniversary, we have rearranged the series for you and given atmospheric lighting to the 21 H0 models and 12 N models.

Find out more at: [www.faller.de](http://www.faller.de)

12 highlights

## Monthly models

Model of the month  
April

Exclusive special models and authentic re-editions in limited quantity: With its coveted Models of the month FALLER addresses twelve times a year all passionate scale modellers who are in search of the unusual. Here it's worth being fast!

Look for the marked products.

A DVSI Model Railway Group initiative

## Wir Modellbahner

The [wirmodellbahner.de](http://wirmodellbahner.de) site does not only post stories, tips and video tutorials on varying model railway topics for beginners and returning model enthusiasts but also serves as a welcome platform for all relevant communities. The new followers series will showcase detailed portraits on creative model builders who have been successful on social media presenting their hobby with fun and enthusiasm.

New themed catalogues in 2021

# Military and miniature figures

Alongside the updated FALLER and POLA G catalogues, two additional themed catalogues will be published this year with plenty of product innovations:

**Military:** If you are fascinated by life in the army, the military buildings, troop barracks and the characteristic terrain of military compounds, then the FALLER military programme is just the thing for you. You will find all the models corresponding to this fascinating theme in the separate military catalogue.

Available from March!

**Miniature figures:** new additions to the repertoire of figures. The FALLER range of figures is constantly being expanded and supplemented with typical everyday figures. These enable you to create model making scenes that are authentic down to the very last detail – just like in real life, undoubtedly enriching every aspect of your model making set-up.

Available from March!

All catalogues are available from your specialist retailer, or as a free delivery if you provide us with your contact details: [neuheitenprospekt@faller.de](mailto:neuheitenprospekt@faller.de)



Product catalogue 2021/2022

## Enormous inspiration

The world in miniature is simply fascinating, and we have captured this in our upcoming 2021/2022 product catalogue. With a slight delay, but all the more multifaceted for it, the new FALLER product catalogue »Scale Modelling 2021/22« will be released this summer. Inspiring, fascinating, focused – this is what defines FALLER, big in small things.

FALLER New Items 2021 № 2

## New products brochure

In this brochure, we take the opportunity to show you all of the product updates that will be coming out in the first half of 2021. This anniversary year, you can also look forward to an additional brochure presenting the second part of the product innovations.

Available from autumn.

A man with a beard and sunglasses, wearing a red and blue plaid shirt, is holding a miniature model of a house. He has a joyful expression. The background is a light grey gradient.

**SHOP  
ONLINE**

[www.faller.de](http://www.faller.de)  
[www.car-system-digital.de](http://www.car-system-digital.de)



4

110142

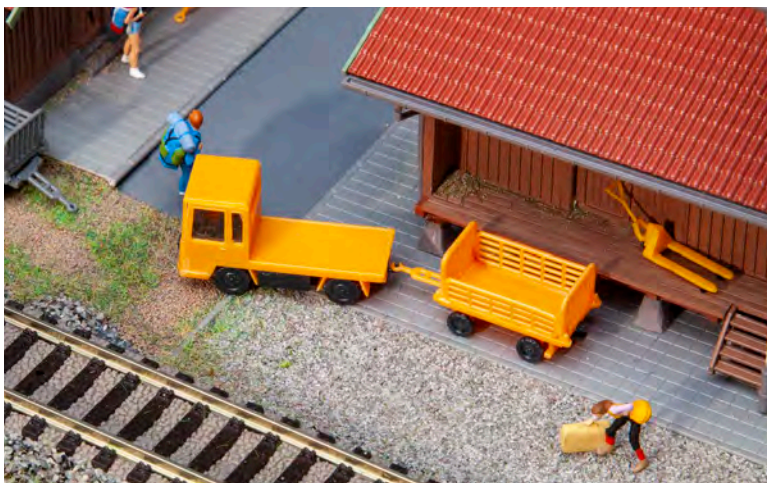
## »Bever« Station

Jewel of the Albula line. Model of the three-storey »Bever« station building with white brick facade on the ground floor, upper storeys faced with white shingles, and protruding half hipped roof covered with tiles. The model's foundation consists of a plinth with steps, ramp and platform. The Albula railway line located in the Swiss canton of Grisons connects Thusis on the Posterior Rhine with the health resort St. Moritz in Engadine.

The kit is made from a mixture of materials plastic and wood/special cardboard.

**Epoch III** - 335 x 160 x 168 mm - 01/21

**ajckids**.com  
planes, trains & automobiles



180357

## Platform truck

Still transport helper! Stationary model of an electric platform waggon »R08-12« with a loading platform and a trailer for the transport of luggage by railway employees. Several construction variants are possible.

**Epoch III** - Platform truck: 40 x 14 x 22 mm,  
Trailer: 38 x 14 x 17 mm - 02/21



110150

## »Mühlen« Station

Rural station building with a T-shaped layout and a light-coloured plaster façade over a surrounding masonry base.

**Epoch II** • Patinated model • 205 x 116 x 90 mm • 03/21



120092

## »Neuenkirchen« Signal tower

Two-storey signal box building constructed of bricks with installation parts for the driver's cab. Three switch levers, hectometre posts, a signal horn and pre-heating equipment are included for the exterior decoration.

**Epoch II** • Patinated model • 158 x 67 x 107 mm • 03/21



110151

## »Hüttenberg« Wayside station

Rural halt with a yellow plaster façade, tiled roof and a small shed extension. A small roof overhang protects the entrance to the building.

**Epoch III** • 147 x 127 x 84 mm • 05/21



120269

## »Zernez« Switchgear house

In the Engadine! Rhaetian Railway (RhB) masonry switch tower with stone-faced plaster façade, roofed external staircase and a half-hipped roof. The original model was built around 1913 in the Graubünden municipality of »Zernez«.

**Epoch II** • 88 x 76 x 135 mm • 04/21



120377

## 2 Railway electricity pylons

Model set containing two structurally identical transmission line pylons. Conductor cables are included in the kit (without function).

**Epoch III** • 120 x 48 x 266 mm (2 x) • 02/21





120093

## Signal tower

Two-storey mechanical signal box with dark red clinker façade and white window frames under a flat half-hipped gabled roof.

**Epoch II** • Patinated model • 165 x 83 x 80 mm • 06/21

151621

## Track layers

02/21



120108

## Bridge signal box

Signal box model based on an original in Wuppertal-Elberfeld with a crumbling, light plaster façade that exposes the red bricks. The signal box bridge with walkway and railings stretches over a track.

**Epoch II** • 190 x 153 x 166 mm,  
Clearance: 87 mm • 03/21



120097

## Goods shed

Dark red clinker-built goods shed with a quarry stone base, gabled roof and roof vent as well as wooden gates and loading ramps on two sides of the building.

**Epoch I** • Patinated model • 259 x 143 x 87 mm • 01/21

120271

## »Dorer« Coal supply

Large coal shed constructed of wood with movable gates to the railway side and a mono-pitched roof. The front sides of the storage building are flanked by a roofed outdoor storage area and an office annex, which is entered via a small terrace. A fence, wheelbarrows and sack barrows, barrels, sacks and coal are included for scene design.

**Epoch I** • Patinated model • 225 x 114 x 66 mm • 02/21





130886

## Joiner's workshop

Workshop building of a stair builder with a roofed porch and a chip silo at the back. A trolley, a circular saw, several stacks of boards and other accessories are included to equip the joinery.

Epoch III - 176 x 120 x 80 mm - 02/21



130885

## »Langenbach« Porcelain factory

Historic factory building constructed of red brick with a large factory hall, chimney extension and partially roofed ramp area. For decoration, the kit comes with containers, crates, a cast iron fence and other accessories. To enlarge the factory, several kits of the model can be built behind or next to each other. Use the »Smoke generator kit«, Art. 180690, for a smoking chimney.

Epoch II - 340 x 270 x 275 mm - 02/21





11

130120

## Bus depot

Set of buildings containing a two-storey office building with corner glazing and interior furnishings as well as a vehicle hall with two parking spaces for buses and two glazed folding doors at each front side. Suited for Car System and Car System Digital owing to the drive-through facility.

**Epoch IV** • Office building: 216 x 136 x 89 mm, Vehicle hall: 212 x 133 x 68 mm • 05/21



130140

## Motorcycle shop

Motorcycle shop in a single-storey brick building with a distinctive blue gate, doors, windows, segmental arches and friezes. Two motorcycles and advertising boards for decoration are included in the kit.

**Epoch IV** • Patinated model • 145 x 97 x 60 mm • 02/21

130649

# Town hall with fire brigade garage

Two-storey town hall building with stone and half-timbered façade, a tower extension with a clock and a garage with a large red door with semi-circular arch frame.

12

Epoch II • 206 x 168 x 215 mm • 04/21



150928

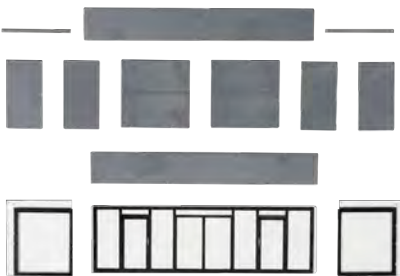
Modern firemen



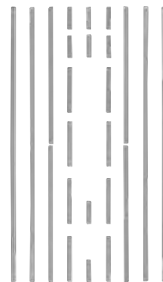


13

Additional elements of the Goldbeck modular kit and the expandable »Goldbeck Industry hall«, Art. 130890 can be found at [www.faller.de](http://www.faller.de)

**180896**

»Goldbeck« Entrance component  
Epoch VI - 157,5 x 31 x 34 mm - 02/21

**180897**

»Goldbeck« Corner covers  
Epoch VI - 120 x 1,8 x 1,8 mm (4 x),  
60 x 1,8 x 1,8 mm (4 x), 20 x 1,8 x 1,8 mm (8 x),  
10 x 1,8 x 1,8 mm (8 x) - 02/21

**180898**

»Goldbeck« Roof beams and wall connectors  
Epoch VI - 02/21

130820

## »Bran« Castle

Limited-edition anniversary model for »75 Years of FALLER«  
Accurate replica of Bran Castle, which was built in the 14<sup>th</sup>  
century in the municipality of Bran in Siebenbürgen, Romania,  
as a fortification and was later converted into the royal  
dwelling.

The multifaceted layout of the castle with its irregular floor plan and extravagant roofscape was developed over the course of multiple modifications and expansions through the centuries.

The inner courtyard with its half-timbered elements is surrounded by the high, square central tower with its mono-pitched roof and ridge turret to the north, the main residence with its roof terrace and solid natural stone outer wall to the east, the gatehouse with a sentry box and large outside staircase to the castle, a prominent stair tower with a conical roof and an annexe for the park access to the south, and a battery tower with an enclosed round tower displaying a conical roof in the south-westerly direction.

The model is equally suited to being built as a hilltop or lowland castle.

The castle, which is now used as a museum, is closely connected to the myth of the vampire Count Dracula. As legend has it, the historical figure Vlad III, who at that time was the ruler of the Principality of Wallachia and possibly the inspiration for Bram Stoker's famous fictional character, used the castle as his residence.

Epoch I • 490 x 325 x 415 mm • 09/21



**ajckids.com**  
planes, trains, automobiles









**130821**

## Historical town house

Tower-like town house with three storeys, plaster façade and a steep hipped roof with dormers. The kit comes with printed shutters and ornamental flower pots for decoration. The model can be built as a stand-alone or as the beginning of a row of town houses.

**Epoch II** - 95 x 90 x 200 mm - 04/21



**130822**

## Rapunzel tower

Let down your hair! Cylindrical tower with a pointed conical roof, a door and small windows, can for instance be used for the representation of fairy tales or as a defence tower of an old town fortification.

**Epoch I** - Ø 66 x 258 mm - 03/21



130651

## Inferior Court

Representative, three-storey building model with façade elements that are elaborately designed, such as brick window trimmings, stepped gable and coat of arms, as well as a half-timbered gable cottage.

**Epoch III** • 225 x 235 x 274 mm • 03/21

17

130586

## Castle mill

Two-storey water mill with angle ashlar and door and window jambs consisting of dressed natural stones laid bare of rendering as well as an annexed half-timbered outbuilding on eaves side with ground floor of visible stones. The model can be built so as to have an over-shot or undershot water wheel on gable side, thus leaving the design of the flow of water to the modeller's discretion. Some worn out millstones are used to embellish the front facade. The water wheel can optionally be driven by the »Synchronous hobby motor«, Art. 180629 (not supplied).

**Epoch I** • 170 x 144 x 150 mm • 04/21





130710

### »Small town« 2 End terraced houses

For your small town row of houses! Two-part building set consisting of two three-storey side-gabled houses with stepped gables, dormers, façades in different colours and shops on the ground floor.

**Epoch III** - 90 x 64 x 152 mm (2 x) - 03/21



130708

### 3 Small-town houses

For your small-town row of houses! Three-part building set consisting of two side-gabled houses and one end-terraced house in various colour schemes. The three-storey models feature differently designed façades, shops on the ground floor and hipped roofs with dormers.

**Epoch III** - 100 x 65 x 148 mm, 110 x 62 x 153 mm, 100 x 62 x 142 mm - 03/21



130711

### »Small town« 2 Relief houses

For your small town row of houses! Two-part relief building set made up of two three-storey, side-gabled building halves with hipped roofs, one of which has a shop on the ground floor. The models may be placed on a wall or at the edge of the layout as a background model and can be positioned flexibly in rows of houses to save space.

**Epoch III** - 64 x 45 x 142 mm (2 x) - 04/21



130709

## »Small town« End terraced house

For your small town row of houses!  
Three-storey end-terrace house with a stepped gable, dormers and a shop on the ground floor.

Epoch III • 90 x 64 x 152 mm • 03/21

19

190077

## »Römerberg East Row« Promotional Set Town houses

Six-part old town building set modelled on the original east row at Frankfurt's Römerberg, historically reconstructed in 1983, with stone ground floors and partly half-timbered upper floors.

Epoch II • House 1: 92 x 77 x 200 mm, House 2: 90 x 40 x 176 mm,  
House 3: 82 x 60 x 185 mm, House 4: 94 x 79 x 198 mm,  
House 5: 97 x 50 x 158 mm, House 6: 107 x 74 x 191 mm • 04/21



**ajckids.com**  
planes • trains • automobiles





130680

## »St. Andreas« Church

Single-nave church with a tiled roof, polygonal choir termination, tracery windows, stonework bell tower and flying buttresses.

Epoch I • 212 x 109 x 260 mm • 05/21





130681

### »Kirchstraße 3« Parsonage

One-storey, light plastered home with a brown building base, pilaster strips and a staircase leading to the front door. A grey plain tile hipped roof with dormers covers the model.

**Epoch II** • 128 x 118 x 104 mm • 03/21



21

130682

### »Kirchstraße 5« Residential building

Two-storey, green plastered home with a light brown building base, pilaster strips and a staircase leading to the front door as well as a balcony above. A plain tile hipped roof covers the model.

**Epoch II** • 133 x 128 x 135 mm • 03/21



130643

### Architect's house with sheets roof

Large single-family house with a glass façade facing the garden and a living floor in the attic which is covered with fibre cement panels. Interior furnishing accessories are included with the model. The kit consists of a mixture of materials made of plastic and special cardboard.

**Epoch III** • 125 x 107 x 84 mm • 04/21

130677

# »Vogtsbauernhof« Black Forest Set

4-part building set that is typical of the region and consists of a large Black Forest farm, a storage house named after the Kinzig valley with a beam fruit-press and weather roof, a chapel with a bell tower and a little bakehouse.

22

**Epoch I** • Bakehouse: 54 x 44 x 50 mm, Chapel: 48 x 46 x 90 mm,  
Black Forest farmyard: 270 x 240 x 145 mm, Storage house: 125 x 116 x 88 mm •  
04/21







130657

## Mobilehome

Mobile architecture! Transportable housing unit with a veranda, awning and a gabled roof with skylights for staging a campsite scene. The model comes with matching accessories such as parasols, deck chairs and a table with garden chairs.

Epoch V - 110 x 54 x 39 mm - 04/21



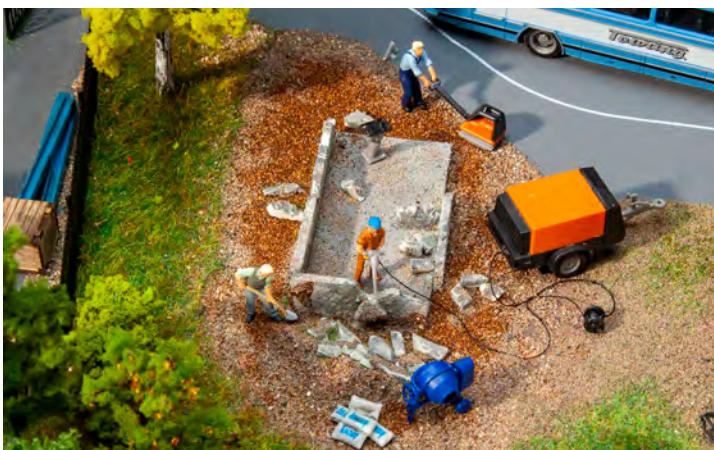
23

130656

## Holiday home

Blue plastered holiday home, single storey with an oblong layout, wooden gables and flat inclined gable roof.

Epoch III - 107 x 67 x 49 mm - 04/21

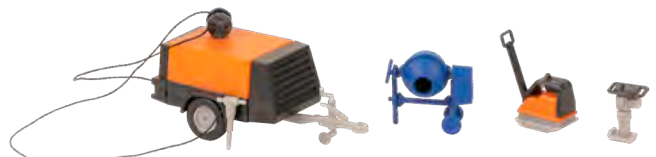


180344

## Construction machine set

Construction site equipment! Decoration set consisting of a concrete mixer, vibrator and compressor.

Epoch IV - 04/21





180050

## »Beach« Mini diorama

Enjoy nature. Design set with a base plate and various landscaping materials such as trees, scattering material and grass fibres for the arrangement of a beach scene with tents and three miniature figures.

Epoch III - 190 x 142 x 85 mm - 05/21

24

180051

## »Mountains« Mini diorama

Enjoy nature. Design set with a base plate and various landscaping materials such as trees, scattering material and grass fibres for the arrangement of a mountainous landscape with a wooden shed and three miniature figures.

Epoch III - 190 x 142 x 100 mm - 05/21



180281

## 2 »DHL« Packstations

Self-service around the clock. Two roofed parcel dispenser models with a DHL motif in a set.

Epoch VI - 50 x 15 x 27 mm (2 x) - 06/21

Model of the month  
**January**



191761

## »Burgschwabach« Station

Epoch I • 360 x 236 x 177 mm • 01/21

Model of the month  
**February**



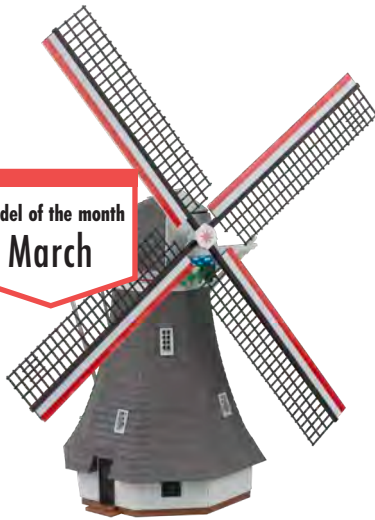
191762

## Bell foundry

Epoch II • 240 x 170 x 167 mm • 02/21

25

Model of the month  
**March**



191763

## Small windmill

Epoch I • 115 x 115 x 260 mm • 03/21

Model of the month  
**April**



191764

## Seasonal wine tavern

Epoch III • 160 x 96 x 100 mm • 04/21

Model of the month  
**May**



191765

## Sawmill with dwelling house

Epoch III • 145 x 95 x 120 mm, 95 x 85 x 75 mm • 05/21

Model of the month  
**June**



191766

## Bus depot

Epoch II • 262 x 275 x 125 mm • 06/21



**151624**  
**Railway staff Period V**  
 02/21



**151625**  
**Steam locomotive staff**  
 02/21



**151615**  
**At the platform**



**151616**  
**Waiting passengers**



**151665**  
**On the building site**  
 05/21



**151668**  
**»Hermes« Couriers**  
 05/21



**151604**  
**In the garden**  
 02/21



**151667**  
**In the park**  
 05/21

You can find many more sets with miniature figures in our new figurine programme on [www.faller.de](http://www.faller.de)



27

232188

## Vine-growing estate with Vinegrower's taverne

Building set with half-timbered façades! Farmstead comprising a residential building, a barn with an extension, stables for small animals and a walled enclosure. The buildings can be arranged in a variety of ways. The set includes accessories such as a dung cart, doghouse, picket fence and stork's nest for decoration.

**Epoch III** - 191 x 188 x 66 mm - 03/21



232191

## Organic farm

Two-storey farmhouse with living quarters, a stable and a barn area, façades with various designs and a lateral extension made of planks. The kit includes a cellar trap, a wayside cross, a slurry pump and flower boxes as design elements.

**Epoch I** - 110 x 66 x 68 mm - 04/21



28

222412

## »Sparkasse« Airship

All aboard! Non-rigid airship with a basket, stabilising fins and a white hull printed with the »Sparkasse« logo. The assembly kit is also suitable as a background model for the H0 scale.

**Epoch V** • 360 x 93 x 115 mm • 05/21



222571

## Concrete bridge

Modern concrete railway bridge with four piers and abutments. Suitable for 2-rail traffic and can be used for all model tracks. Can be combined with the »Modern arched bridge«, Art. 222573.

**Epoch VI** • 365 x 87 x 122 mm,  
Clearance: 97 mm • 04/21



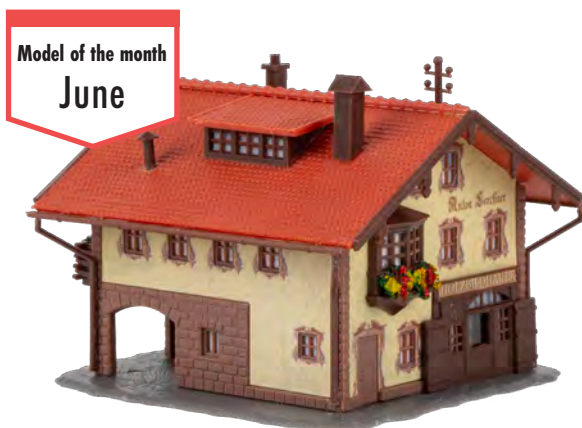
Model of the month  
March

231707

## Factory premises

**Epoch II** • Office building: 94 x 81 x 124 mm, Factory building: 92 x 68 x 50 mm (2 x),  
Boiler house: 126 x 74 x 135 mm, Length Factory wall: 687 mm • 03/21

29



Model of the month  
June

231708

## »Anton Lerchner« Mountain chalet

**Epoch II** • 78 x 72 x 59 mm • 06/21



272917

## Factory wall

Brick factory wall with friezes and a brick round arch as the entrance gate.

**Epoch I** • Length: 228 mm • 02/21



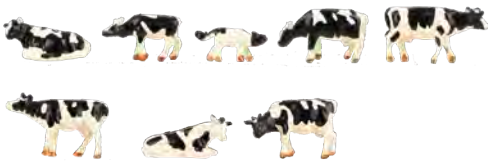
30



**155901**  
**Sheep farming**  
 02/21



**155902**  
**Cows, brown flecked**  
 03/21



**155903**  
**Cows, Friesian**  
 03/21



**155904**  
**Mountain cows**  
 03/21



**155905**  
**Fallow deer, red deer**  
 03/21



**155601**  
**Forestry workers and hunters**  
 04/21



**155602**  
**Parcel services**





282789

## Oberneuland mill

Dutch windmill with an octagonal layout and a surrounding gallery with railings based on an original model in the Bremen district of Oberneuland, which is now under monumental protection. The mill can be operated with the Geared motor, Art. 180722 (not included).

**Epoch I** - Lasercut model - Mill with wings: 112 x 100 x 157 mm,  
Mill: 112 x 80 x 132 mm - 05/21



158052

Passers-by





140335

## »Dog rose coffee cups« Carousel

Only for people who don't suffer from vertigo. Functional model of a coffee cup carousel based on an original model in the former Heide-Dorf (Heath Village) of the Heide Park Resort in Soltau. Passengers are seated on a huge tray in oversized coffee cups that rotate around a central coffee pot. The kit includes one motor.

**Epoch III** - incl. motor - Ø 172 x 135 mm -  
03/21





140336

## »Sala Motor-Drome« Motorcycle sheer wall show

Funfair nostalgia! Functional model of a wall of death motorcycle show with two moving motorcycles based on the »Sala Motor Drome« built in Sala, Sweden, one of the oldest moving wall of death attractions. The set includes the stage in front, a motor and a control board.

Find out more at: [www.sala-motordrome.nl](http://www.sala-motordrome.nl)

Epoch III • incl. motor • 170 x 170 x 127 mm • 05/21

## Ferris wheel LED lighting set

Updated for easy handling!

180728

Lighting kit featuring LED technology for the »Ferris wheel«, Art. 140312.

05/21

242317

Lighting kit featuring LED technology for the »Ferris wheel«, Art. 242312, sold out at the factory.

05/21



# CAR SYSTEM DIGITAL

DIGITAL VEHICLE AND TRAFFIC CONTROL



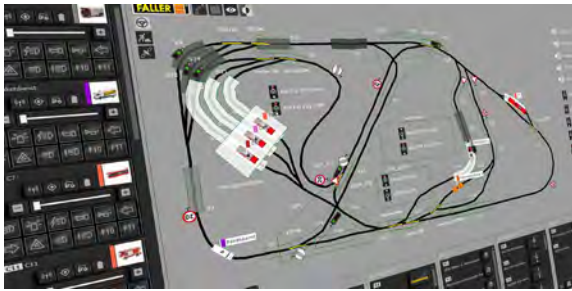
34

## Pure driving pleasure!

### Autonomous driving on your model layout

- Fully automatic traffic control incl. distance monitoring
- High number of digital vehicles with realistic starting and braking characteristics
- Vehicle tracking via ultrasound and traffic control by radio
- Real-time control of vehicle functions possible
- Integrated set-up and control of light signals
- System/road construction reduced to guide wire and junctions
- Minimal cabling thanks to LocoNet and radio communication

Learn more on our site: [www.car-system-digital.de](http://www.car-system-digital.de)



## Software release 2021

### The big update in the anniversary year »75 years of FALLER«

- compatible with new radio-based CSD hardware
- new software UI with dark mode
- optimised graphic display
- customisable with individual background images
- automatic software upgrade for existing users
- compatible with »GamesOnTrack« model railway control system
- The Car System Digital-Software is part of the following products: »Radio Master«, Art. 161346, »Master«, Art. 161354 and »Beginner's Set«, Art. 161355.



161346

## Radio Master

### Compact Car System Digital!

The »Radio Master« in USB flash drive size allows you to control all of your digital vehicle's features. By means of a radio module that transmits and receives, the »Radio Master« controls all communication between the Car System Digital components: digital vehicle, satellites and radio expansion module.

The »Radio Master« comes with the following interfaces:

- A USB connector for plugging into a computer
- Powerful antenna for radio connection between digital vehicles, satellites and radio extension modules

The Car System Digital »Radio Master« comes with the »Basic Version« software licence type for the operation of two digital vehicles.

02/21



161345

## Radio expansion module

### Controllable with the Car System Digital software!

Compact, radio-based expansion module with five outputs (e.g. for junctions and other switching elements) and one input. Ideal for controlling turn-off or stop manoeuvres in connection with a correspondingly desired signal image. The connection is made to 16 V AC.

02/21



161314

## Car System Digital MB Actros Truck »StreamSpace« (HERPA)

### A Car System Digital vehicle leaves nothing to be desired.

- All vehicle functions are customisable and can be changed during driving operation
- Speeds can be infinitely adjusted; realistic acceleration and braking
- Light and sound functions: headlights, tail lights, indicators, hazard warning lights, horn
- Automatic recognition in the radio range of the »Funk Master« or »Master«
- Vehicle positioning with millimetre precision thanks to ultrasound

Use the »Processor-controlled charging unit«, Art. 161349, to charge the batteries of your Car System Digital vehicles.

Epoch VI - 01/21



161495

## Car System Start-Set bus »MB 0405« incl. decoration stickers

Package contents:

- Bus MB O 405 (WIKING)
- decoration stickers
- Storage battery charger
- Special guide wire 10 m
- Roadway knifing filler
- Roadway paint
- Roadway markings
- Crash barriers
- Barrier stakes
- Detailed assembly instructions

Epoch V - 01/21



161479

## Car System Start-Set bus »MB 0405« incl. decoration stickers

Package contents:

- Bus MB O 405 (WIKING)
- decoration stickers
- Storage battery charger
- Special guide wire 10 m
- Roadway knifing filler
- Roadway paint
- Roadway markings
- Crash barriers
- Barrier stakes
- Detailed assembly instructions

Epoch V - 06/21



161432

## MB Sprinter Minibus taxi (HERPA)

Epoch VI - 04/21



161431

## SUV MB G-Class (HERPA)

Epoch VI - 06/21

162009

## Car System Start-Set Train bus »MB 0302«

Package contents:

- MB 0302 »Train bus« (WIKING)
- Storage battery charger
- Special guide wire 10 m
- Roadway knifing filler
- Roadway paint
- Roadway markings
- Crash barriers
- Barrier stakes
- Detailed assembly instructions

Epoch VI - 05/21



1 chassis, 4 options! Car system chassis fits the bodies of the MB Citaro Bus static models by TOMYTEC.



162034

## Chassis MB Citaro

Epoch VI - 03/21



162033

## Lorry MB SK (WIKING)

Epoch VI - 05/21



974545

Bus system Citaro DB (Tomytec)



974552

Bus system Citaro HVV (Tomytec)



974569

Bus system Citaro PTT (Tomytec)



974576

Bus system Citaro Silver (Tomytec)

# GARDENING MADE EASY!

Colourful plants, ready to use without cutting and gluing. Merely plant and enjoy the view!



181359

## 10 small apple trees

Height: 45 mm • 05/21



181279

## Lavender field

175 x 125 x 11 mm • 05/21



181280

## Hop field with poles

150 x 120 x 90 mm • 05/21



181283

## 18 Turnips

Height: 11 mm • 05/21



181284

## 6 Pot plants

Height: 14 - 22 mm • 05/21





171656

## 2C model water

**Water design with 2C model water**  
**– Ultra-realistic results**

Turn your model landscape into a natural experience by adding a pond, lake or river. Let your model ships take centre stage. Create realistic details with a small embankment.

This is easily done with two-component model water. The clear casting resin and the hardener can be measured, mixed and blended in just a few steps and are ready in no time at all.

### Foundation

All working materials, such as wood, dried plaster or foam, e.g. Styrodur®, are suitable for the foundation. It can be coloured using tinting paint and enhanced with scenery elements such as stones or wood.

### Colouring

Because bodies of water are rarely completely without colour, dry pigments of any kind can be added, such as the Pigments Patina-set, Art. 170695.

02/21

# FULL OF ATMOSPHERE

With FALLER LED lamps you will shed the right light on the scenes of your installation. They are the perfect choice for effective and energy-saving illumination.

- ready for connection to 12 V DC
- ideally operated with FALLER »Transformer 50 VA 50-60 Hz«, Art. 180641.



**180100** 3 pcs.  
**180200** 1 pcs.  
**LED Street light, lamppost,**  
Height: 95 mm • 07/21



**180101** 3 pcs.  
**180201** 1 pcs.  
**LED Street light, lampposts**  
Height: 100 mm • 07/21



**180102** 3 pcs.  
**180202** 1 pcs.  
**LED Street light, pole-integrated lamp**  
Height: 93 mm • 07/21



**180103** 3 pcs.  
**180203** 1 pcs.  
**LED Street light, pole-integrated lamps**  
Height: 93 mm • 07/21



**180104** 3 pcs.  
**180204** 1 pcs.  
**LED Park light, pole-top ball lamp**  
Height: 71 mm • 07/21



**180105** 3 pcs.  
**180205** 1 pcs.  
**LED Park light, suspended ball lamp**  
Height: 75 mm • 07/21



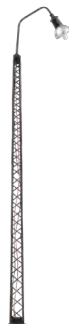
**180106** 3 pcs.  
**180206** 1 pcs.  
**LED Light, suspended ball lamps**  
Height: 75 mm • 06/21



**180107** 3 pcs.  
**180207** 1 pcs.  
**LED Light, pendant luminaires**  
Height: 75 mm • 06/21



**180108** 3 pcs.  
**180705** 1 pcs.  
**LED Park light**  
Height: 63 mm • 07/21



**180109** 3 pcs.  
**180209** 1 pcs.  
**LED Lattice mast arc luminaire**  
Height: 145 mm • 07/21



**180110** 3 pcs.  
**180210** 1 pcs.  
**LED Lattice mast top-mounted luminaire**  
Height: 145 mm • 07/21



272120 3 pcs.  
272220 1 pcs.  
**LED Street light, lamppost**  
Height: 65 mm • 07/21



272121 3 pcs.  
272221 1 pcs.  
**LED Street light, lampposts**  
Height: 65 mm • 07/21



272122 3 pcs.  
272222 1 pcs.  
**LED Street light, pole-integrated lamp**  
Height: 65 mm • 07/21



272123 3 pcs.  
272223 1 pcs.  
**LED Street light, pole-integrated lamps**  
Height: 65 mm • 07/21



272124 3 pcs.  
272224 1 pcs.  
**LED Lattice mast arc luminaire**  
Height: 117 mm • 07/21



272125 3 pcs.  
272225 1 pcs.  
**LED Lattice mast ring luminaire**  
Height: 84 mm • 07/21



272126 3 pcs.  
272226 1 pcs.  
**LED Light, arc luminaires**  
Height: 60 mm • 07/21



272127 3 pcs.  
272227 1 pcs.  
**LED Light, arc luminaire**  
Height: 65 mm • 07/21



**180990**  
**2 Baggage trolleys, grey**  
 Epoch III - 02/21



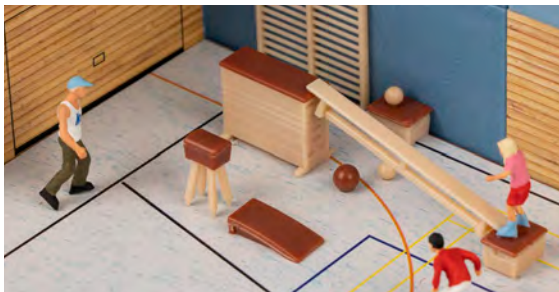
**180991**  
**2 Baggage trolleys, orange**  
 Epoch III - 02/21



**180992**  
**Old clothes container, blue**  
 Epoch VI - 03/21



**180993**  
**Bathroom tiles Set**  
 Epoch IV - 04/21



**180994**  
**Sports equipment Set**  
 Epoch IV - 03/21



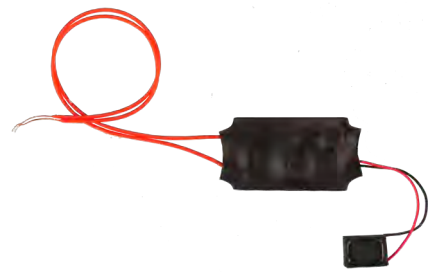
**180995**  
**60 Beer pitchers and 40 Ashtrays**  
 Epoch III - 03/21



**180996**  
**4 Soft drink crates with juice bottles**  
 Epoch V - 04/21

## Figurine set with mini sound effect

Audio experience! Thematic set of figures with a corresponding soundscape. When supplied with power, the noise sounds once for a duration of 5 – 25 seconds (varies depending on product). Can be switched with the »Relay module«, Art. 161659 or any commercially available switch. Can be connected to 12 V DC or 16 V AC.



05/21



**180235**  
»Cows«



**180236**  
»Sheep«



**180237**  
»Railway staff & conductor whistle«



**180238**  
»Railway construction workers & signal horn«



**180239**  
»Storks«



**272800**  
»Cows«



**272801**  
»Sheep«

180807

## Distribution plate, brown

Clear wiring! Brown extra-low voltage distribution plate with 2 x 10 sockets, incl. 10 plugs, 2,5 mm. Identification colour as recommended by NEMA.

02/21



**180801**  
Distribution plate, red

**180802**  
Distribution plate, yellow

**180803**  
Distribution plate, blue

**180804**  
Distribution plate, green

**180805**  
Distribution plate, black

170688

## Special side cutter

For cutting off ultra-fine moulded parts without burrs. Only suitable for polystyrene and copper wires.



# BUILD MORE FREELY WITH MORE OPTIONS

The new FALLER CREATE is here!

We are very excited to be able to present you with the new FALLER CREATE! Over the last few months, we have given it our all so as to implement the most highly requested functions and thus bring FALLER CREATE to a new level. [www.faller-create.de](http://www.faller-create.de)

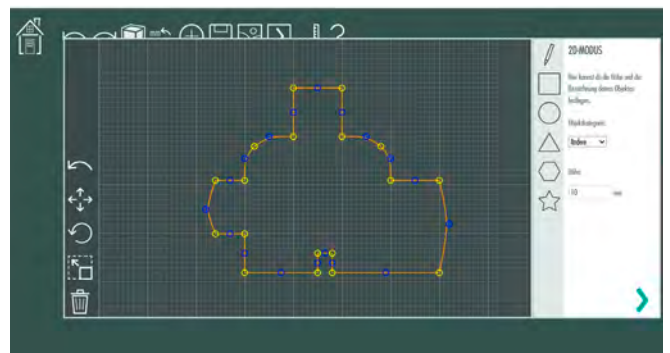
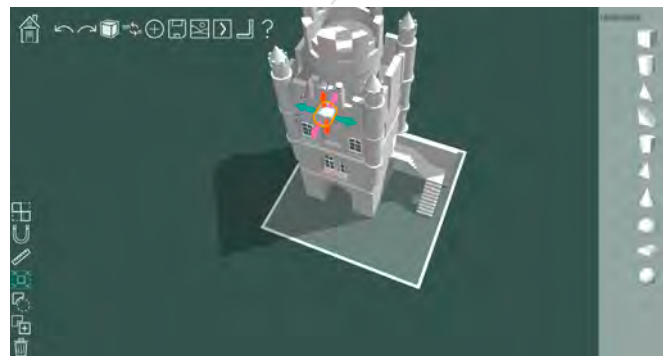
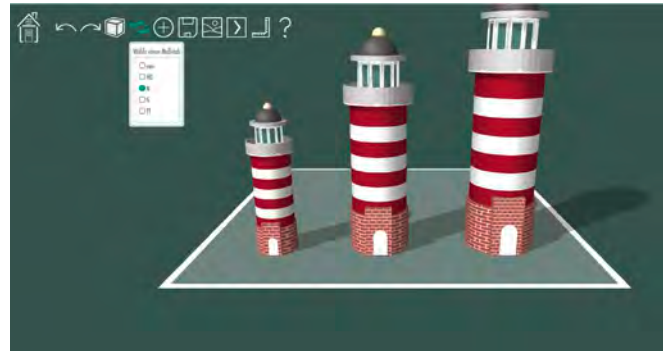
## The most important innovations at a glance

Along with H0, you can now also build in other scales, accurate to the millimetre, such as N or TT.

The size of all forms and accessories can be freely adjusted and distorted. You can even cut holes.

Your drawing will subsequently be transformed into 3D and can be further edited by you.

You can now also share your model with other users. You will then find it in the 'Gallery' area. There, other users can mark it as a favourite. Furthermore, other users can download your model and further edit it for themselves. Create models in different scales.





140418 »Daemonium« Ghost train



130110 Asphalt mixing plant



212123 »Wittenberg« Station

**HIGHLIGHTS**  
**2020**  
Review and suggestion



120281 Roundhouse with 12° track angle



120571 Arcades with shops and interior equipment



282773 »Eutin« Pharmacy

# FALLER brands



You can get extensive catalogues and detailed brochures at a model construction store near you and via: [www.faller.de](http://www.faller.de)

Your FALLER Retailer



**Gebr. FALLER GmbH**  
Kreuzstraße 9  
78148 Gütenbach  
Germany

Phone +49 7723 651-0  
[info@faller.de](mailto:info@faller.de)

[www.faller.de](http://www.faller.de)  
[www.car-system-digital.de](http://www.car-system-digital.de)  
[www.faller-create.de](http://www.faller-create.de)  
[www.facebook.com/faller.de](https://www.facebook.com/faller.de)  
[www.instagram.com/gebrfaller](https://www.instagram.com/gebrfaller)