



Jasper Dice Trays
Visual Guide



Jasper Dice Tray

Standard Configuration

Does not overhang Cup Holder on any edge

Includes Pencil Notch

10 Color Options

- Blue
- Green
- Red
- Yellow
- Grey
- White
- Black
- Orange
- Purple
- Teal





Jasper Dice Tray, Large, 1 Compartment

Available in Both Left and Right Hand (Right Hand Shown)

Overhangs Cup Holder on right edge

Includes Pencil Notch

Left Hand is mirror image, and overhangs Cup Holder on left edge

Same 10 Color Options



Jasper Dice Tray, Large, 2 Compartment

Available in Both Left and Right Hand (Right Hand Shown)

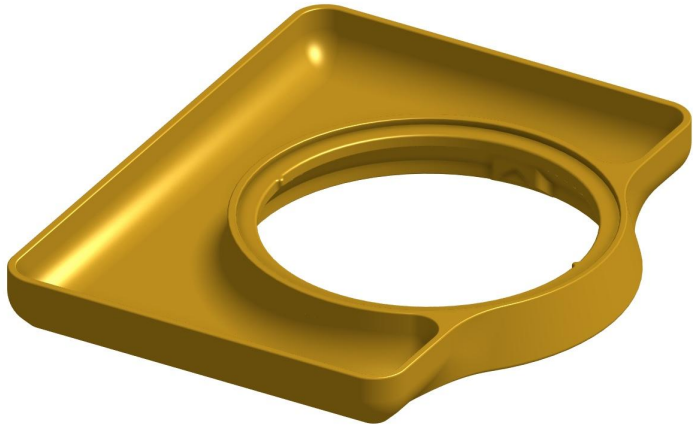
Overhangs Cup Holder on right edge

Includes Pencil Notch

Left Hand is mirror image, and overhangs Cup Holder on left edge

Same 10 Color Options





Jasper Dice Tray, X-Large, 1 Compartment

Overhangs Cup Holder on both left and right edges

Same 10 Color Options



Jasper Dice Tray, X-Large, 2 Compartment

Available in Both Left and Right Hand (Right Hand Shown)

Overhangs Cup Holder on both left and right edges

Left Hand is mirror image, with smaller compartment on the left side

Same 10 Color Options





Jasper Dice Tray, X-Large, 3 Compartment

Overhangs Cup Holder on both left and right edges

Includes Pencil Notch

Same 10 Color Options

