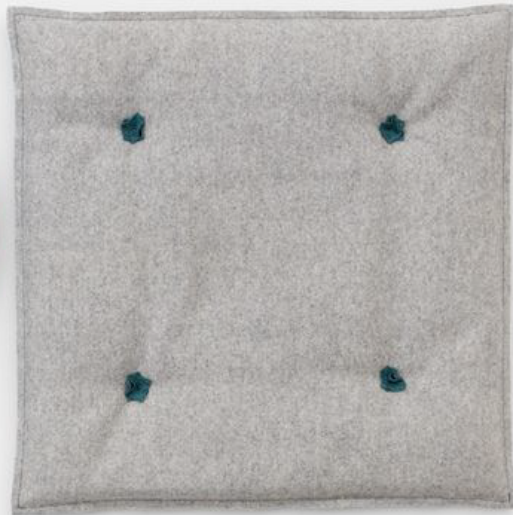


CUSHION for chair models
W. 606



Pillow 24" x 24"



CUSHION for chair models
W. 603-604-605-607-608



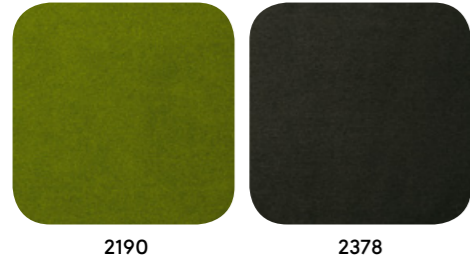
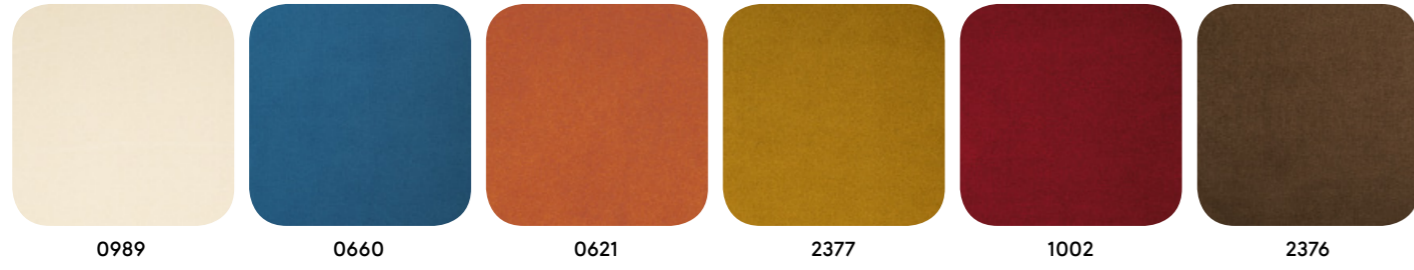
Pillow 22" x 16"



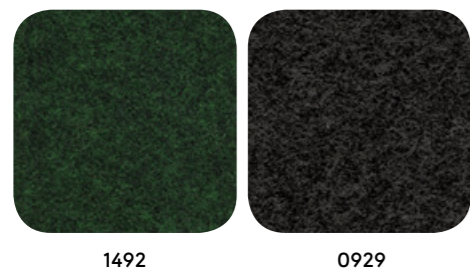
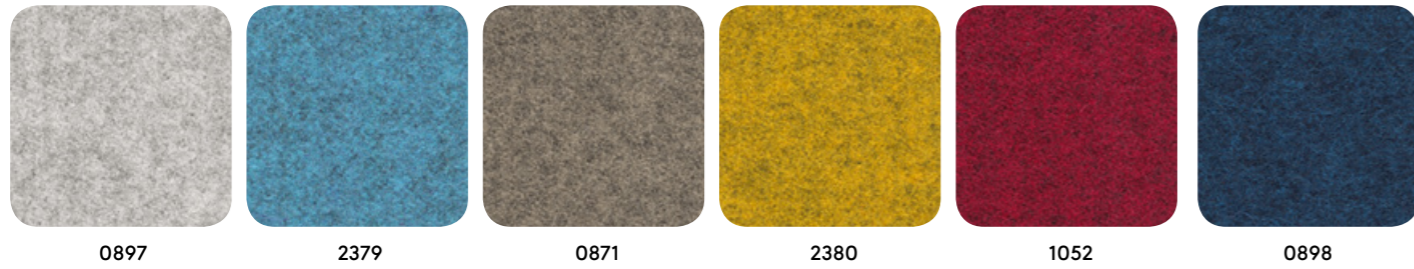
Pillow 16" x 12"

Fabrics

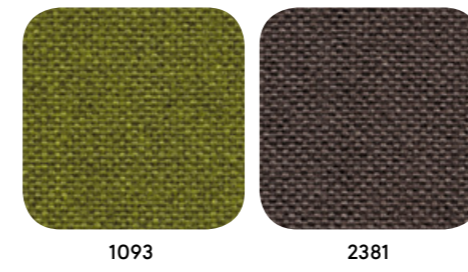
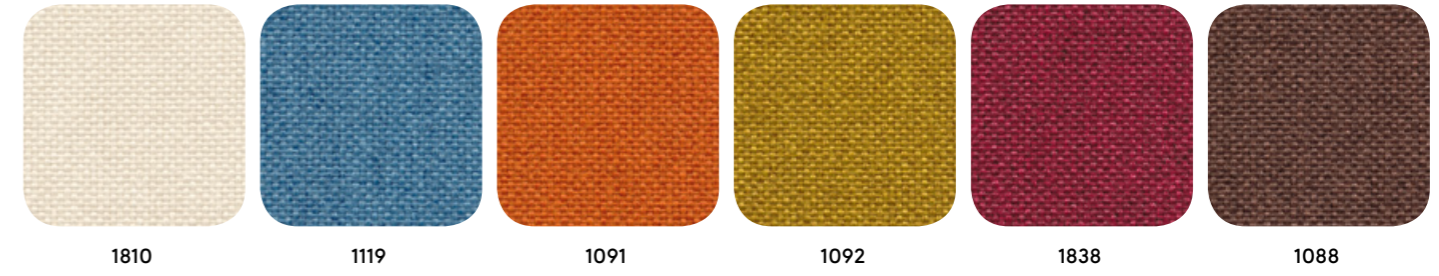
LUNA (Cat. Select)



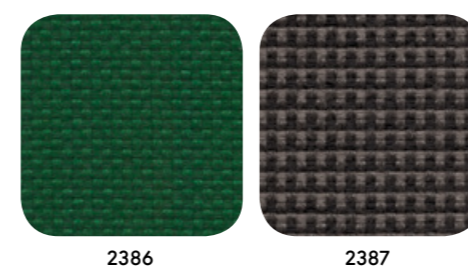
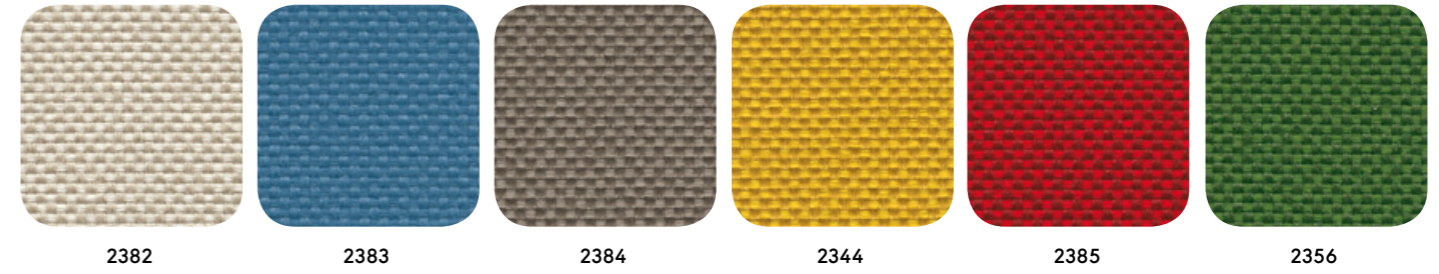
FLAMENCO (Cat. Select)



KING L KAT (Cat. Essential)

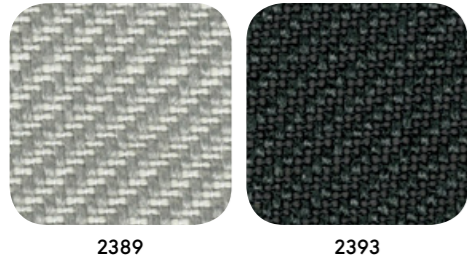
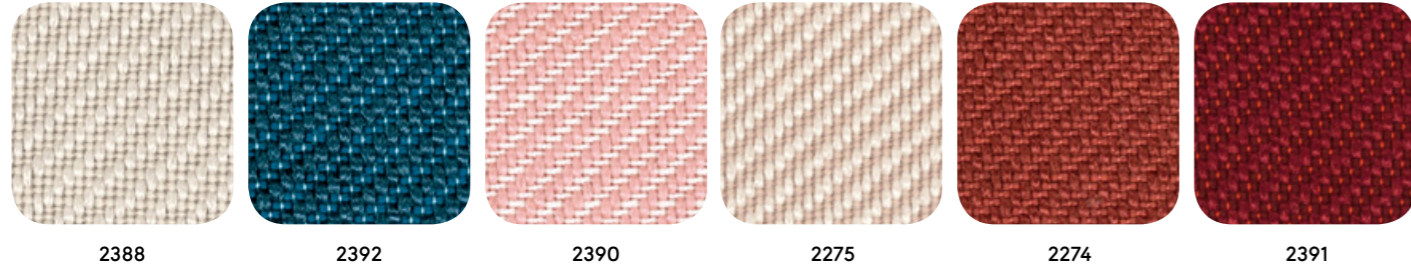


LASER N (Cat. Essential)

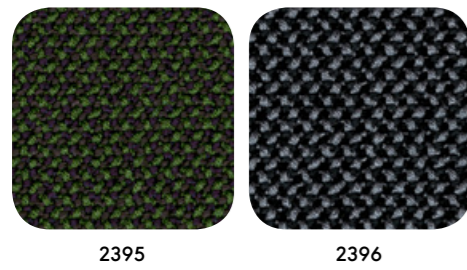
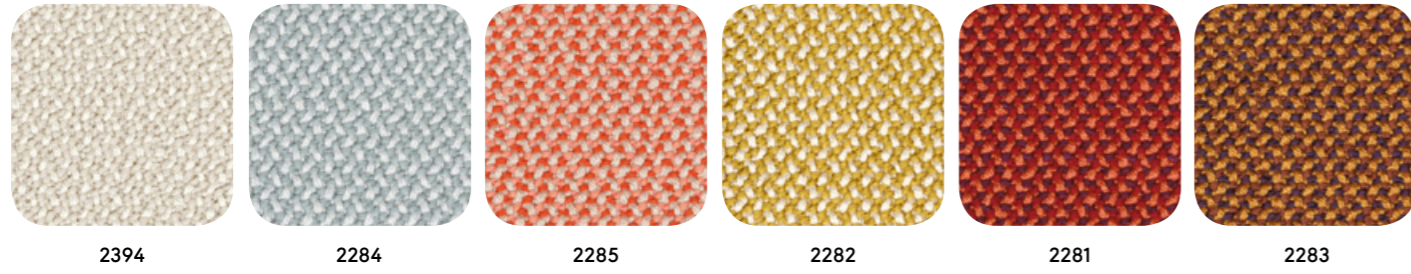


Fabrics

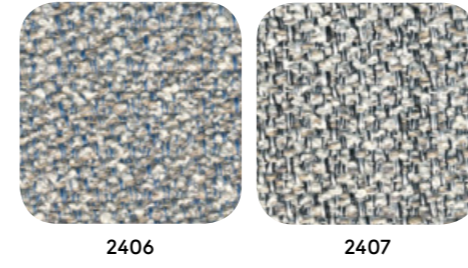
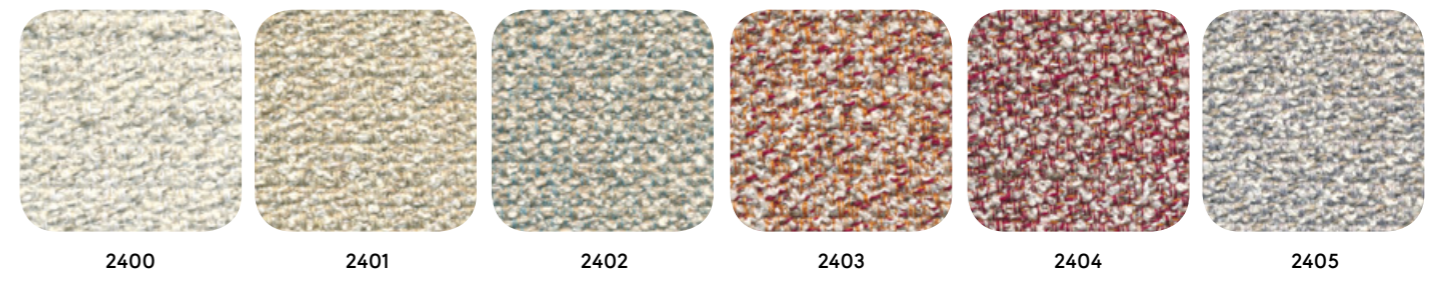
TWILLTWENTY (Cat. Tailored)



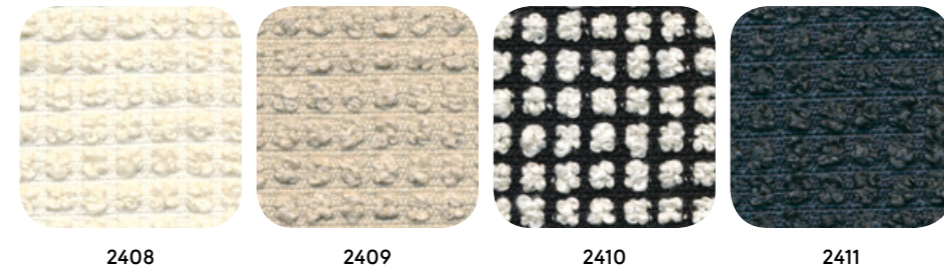
CREDO (Cat. Tailored)



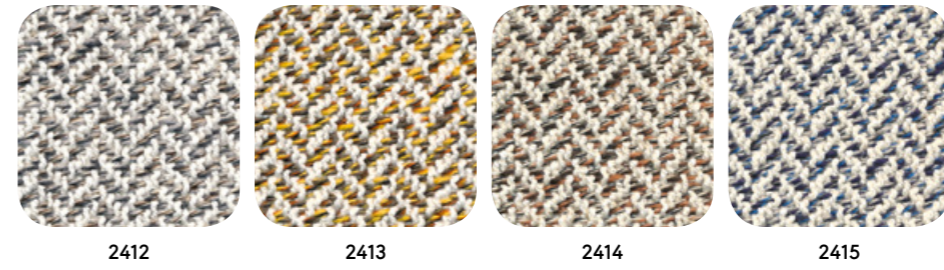
BOEMIAN (Cat. Select)



BRIONNE (Cat. Tailored)

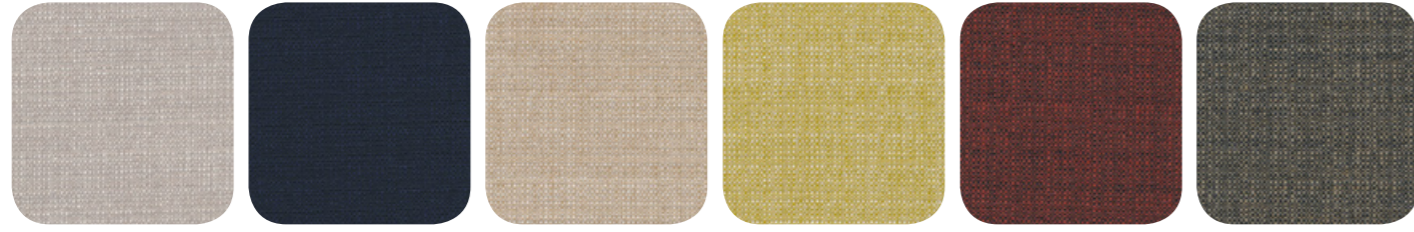


LINARI (Cat. Tailored)



Fabrics

OMBRA (Cat. Tailored)



2467

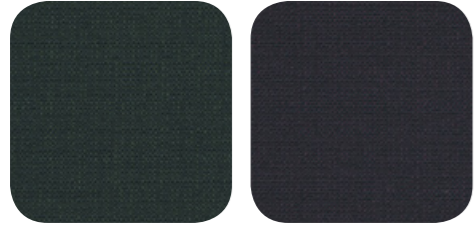
2505

2461

2468

2466

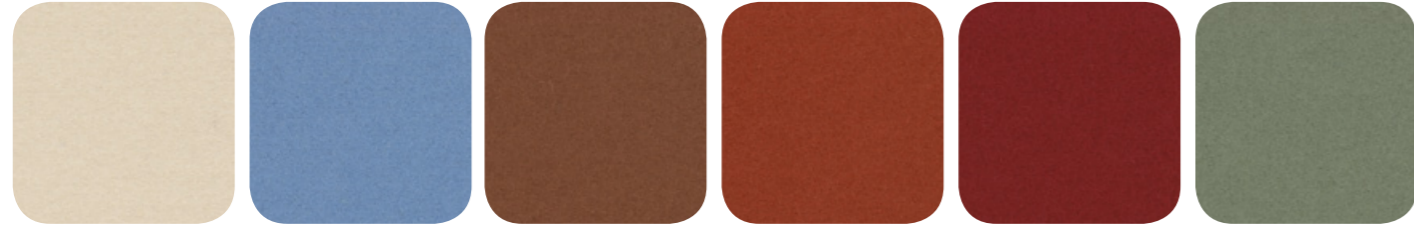
2462



2504

2503

DIVINA3 (Cat. Couture)



2294

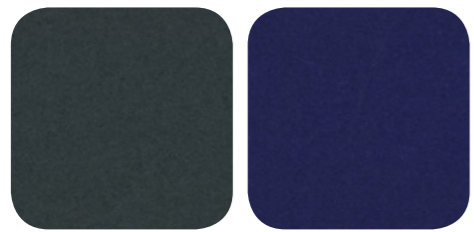
2459

2458

2460

1454

1519



2481

2502

Leather

SOFT UNITO (Cat. Tailored)



2397

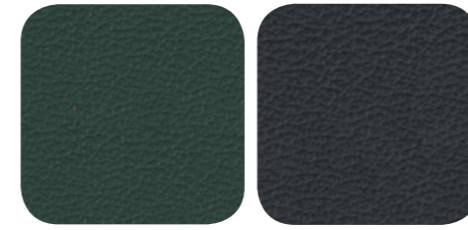
0953

2399

2398

0643

1181

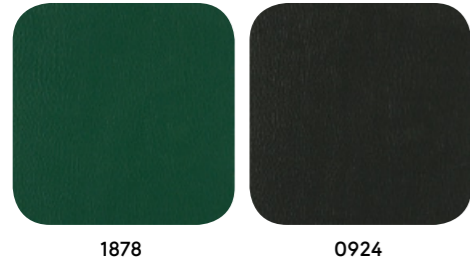
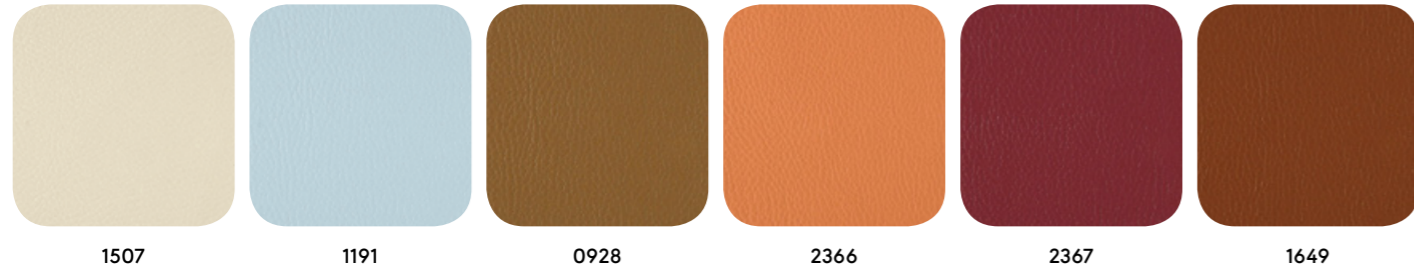


0954

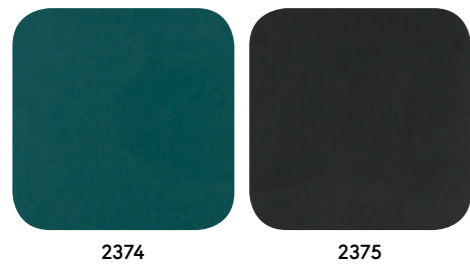
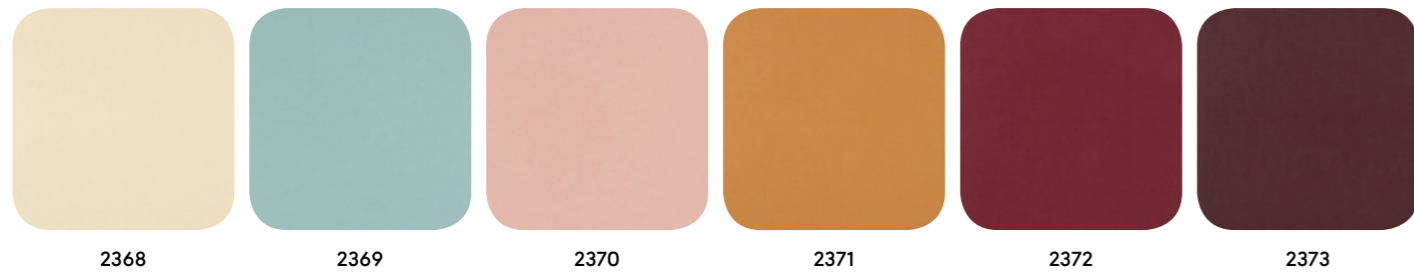
2439

Eco-leather

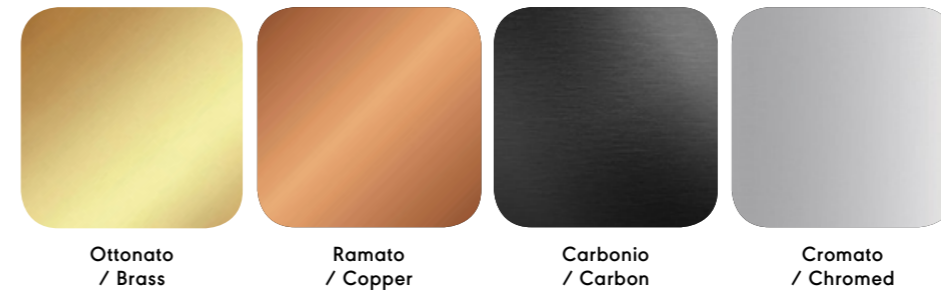
INCA (Cat. Essential)



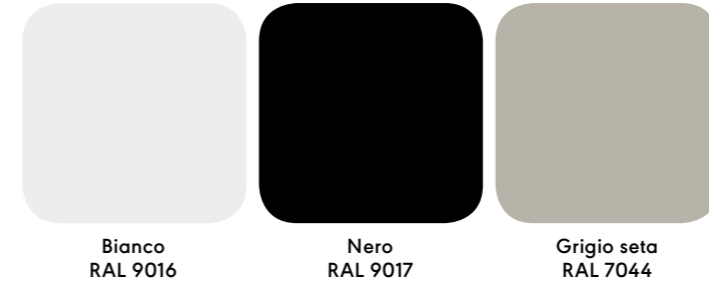
MAGNUM (Cat. Select)



Steel



LACQUERED (Non standard RAL colours available on request)



Timènt

Fabric collection
by Cristina Celestino

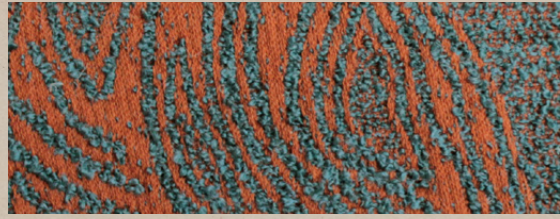
Timènt Fabric collection by Cristina Celestino



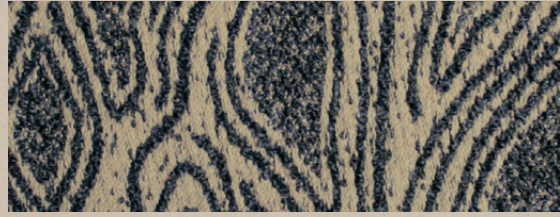
billiani
1911

billiani
1911

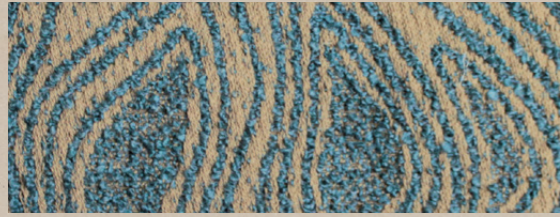
GRETO
Tailored



2634



2631



2630



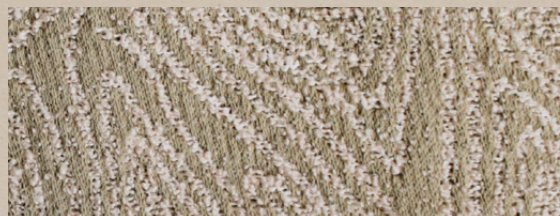
2633



2632



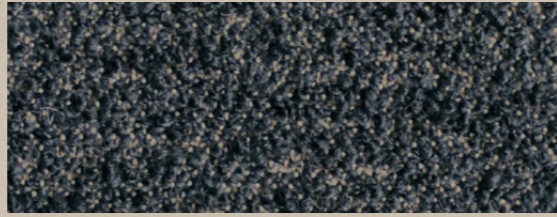
2629



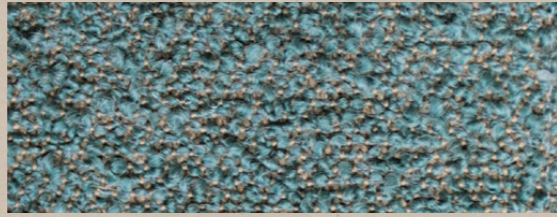
2627



2628



2623



2624



2625



2626



2620



2622



2621

GOLENA
Tailored



2618



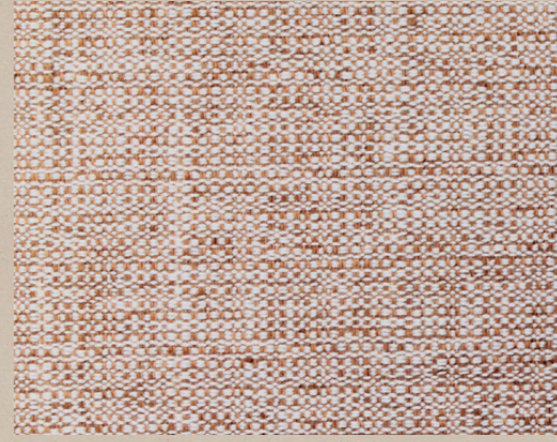
2619



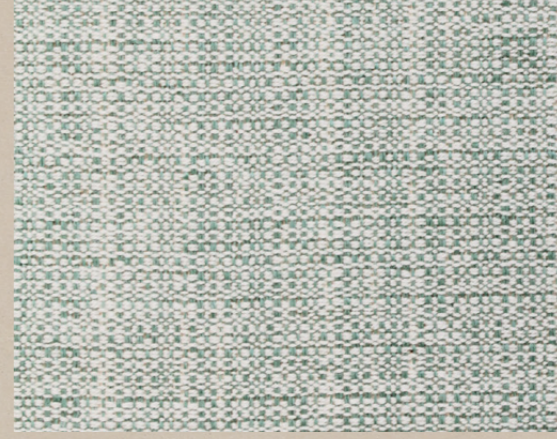
2617



2616



2614



2613



2615



2612

Caratteristiche tessuti / Fabric features

Greto	
Composizione/ <i>Composition</i>	Greto Unito 52%CO-20%WO-18%PC-10%PA Greto Pattern 45%CO-23%WO-12%PA-20%PC
Martindale (resistenza all'abrasione/ <i>abrasion resistance</i>)	35.000 cycles +/- 10% UNI EN ISO 12947-2:2000
Solidità allo sfregamento/ <i>Rub fastness</i>	Dry 4-5 / Wet 2-3 (Black WET 2) UNI EN ISO 105-X12:1995
Pilling	Grade 4/5 (change at 5.000 turns) UNI EN ISO 12945-2:2002
Reazione al fuoco/ <i>Flame resistance</i>	BS 5852:2006 CIGARETTE BS 5852:2006 MATCH CAL TB 117:2013

Golena	
Composizione/ <i>Composition</i>	Golena Unito 60%CO-35%CA-5%PA Golena Pattern 50%CO-43%CA-7%PA
Martindale (resistenza all'abrasione/ <i>abrasion resistance</i>)	35.000 cycles +/- 10% UNI EN ISO 12947-2:2002
Solidità allo sfregamento/ <i>Rub fastness</i>	Dry 4-5 / Wet 2-3 (Black WET 2) UNI EN ISO 105-X12:1995
Pilling	Grade 3/4 (change at 5.000 turns) UNI EN ISO 12947-2:2000
Reazione al fuoco/ <i>Flame resistance</i>	BS 5852:2006 CIGARETTE BS 5852-1 (1979) MATCH

CRIB 5: Timènt is optionally available in the UNIQUE price category to include Billiani-supplied and fitted Crib 5 interliner.

Modulo pattern tessuto/Fabric pattern scheme



Greto 30,5x34 cm



Golena 32,5x33 cm