

Wood

BEECHWOOD



Sbiancato
FG 0078

Naturale
FG 0003

Fango
FG 0027

Noce
FG 0012

Wengé
FG 0025

FRASSINO / ASHWOOD



Sbiancato
FR 0065

Naturale
FR 0076

Fango
FR 0028

Tabacco
FR 0035

Wengé
FR 0047

WALNUT



Noce

OAKWOOD



Sbiancato
RO 0034

Naturale
RO 0046

Fango
RO 0028

Tabacco
RO 0035

Wengé
RO 0047

Colours

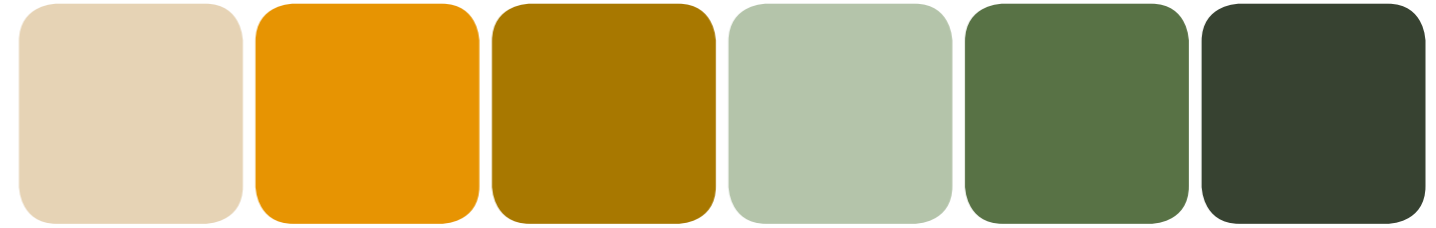
WOOD STAINING OR LACQUERING



Lacquered

Stained

Beechwood, ashwood and oakwood are available lacquered or stained in the following colours.



Avorio chiaro
RAL 1015

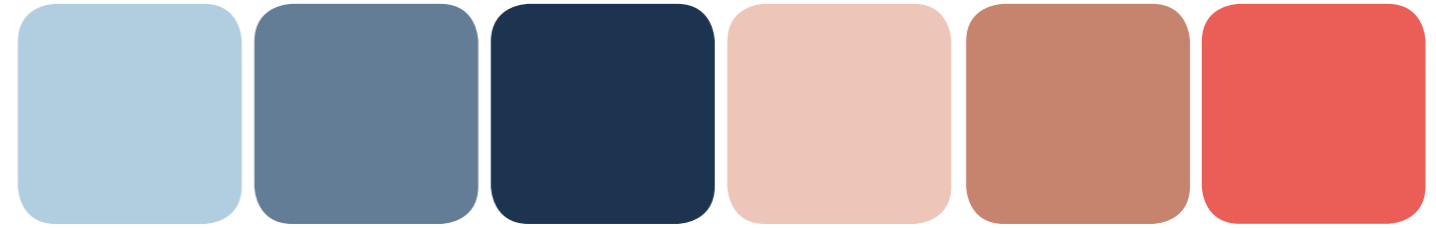
Giallo polenta
RAL 1006

Giallo curry
RAL 1027

Salvia
NCS S 2010-G10Y

Verde reseda
RAL 6011

Verde cromo
RAL 6020



Azzurro pepe
NCS S 1020-R90B

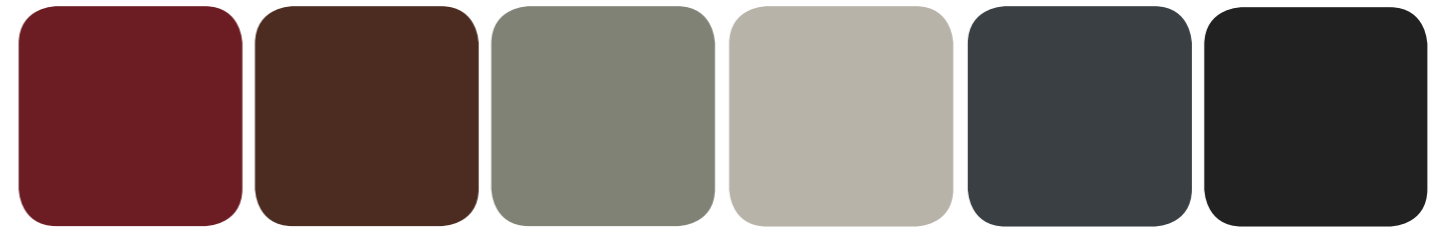
Blu colomba
RAL 5014

Blu Billiani
NCS S 7020-R80B

Rosa pallido
NCS S 1015-Y80R

Rosso beige
RAL 3012

Corallo
NCS S 1070-Y80R



Rosso porpora
RAL 3004

Marrone mogano
RAL 8016

Grigio cemento
RAL 7033

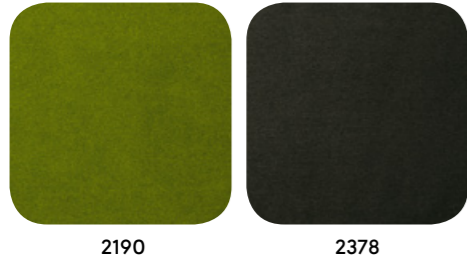
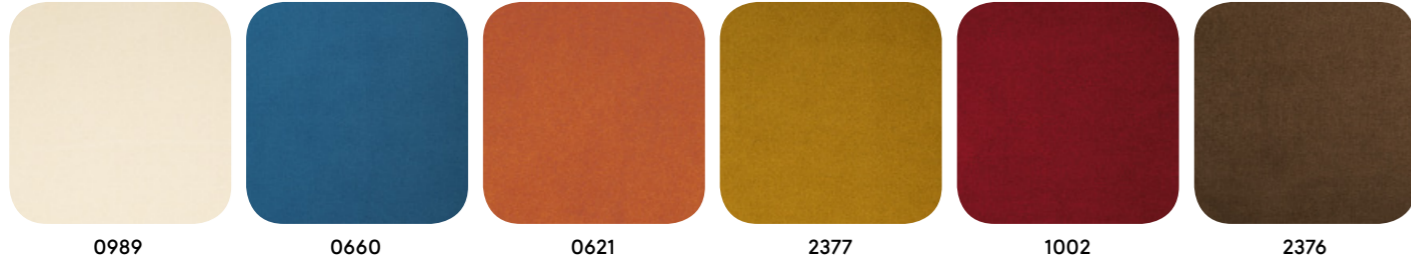
Grigio seta
RAL 7044

Grigio antracite
RAL 7016

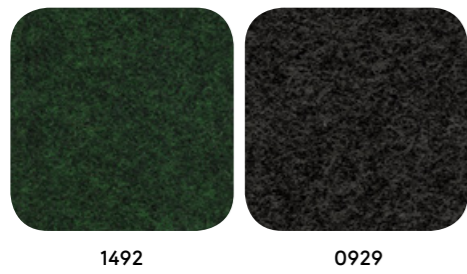
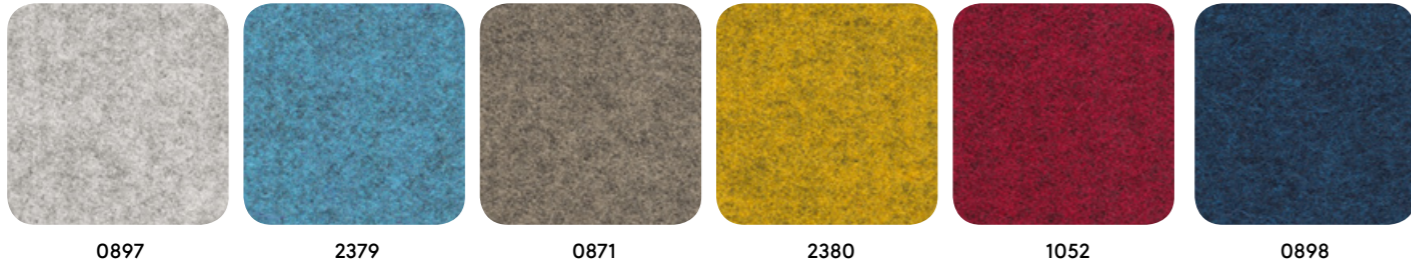
Nero traffico
RAL 9017

Fabrics

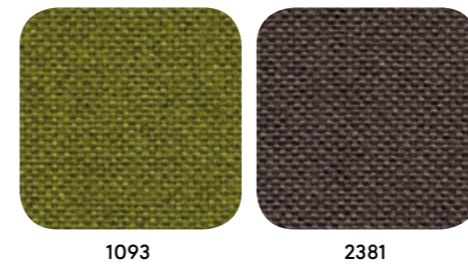
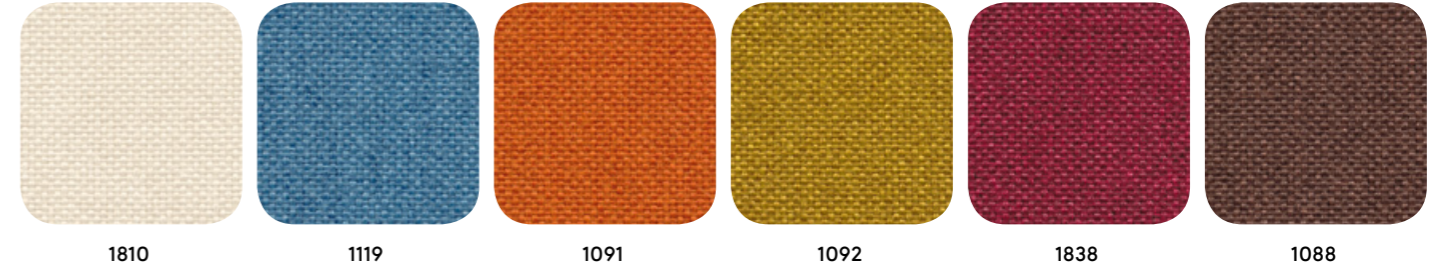
LUNA (Cat. Select)



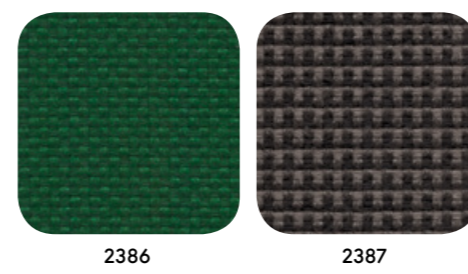
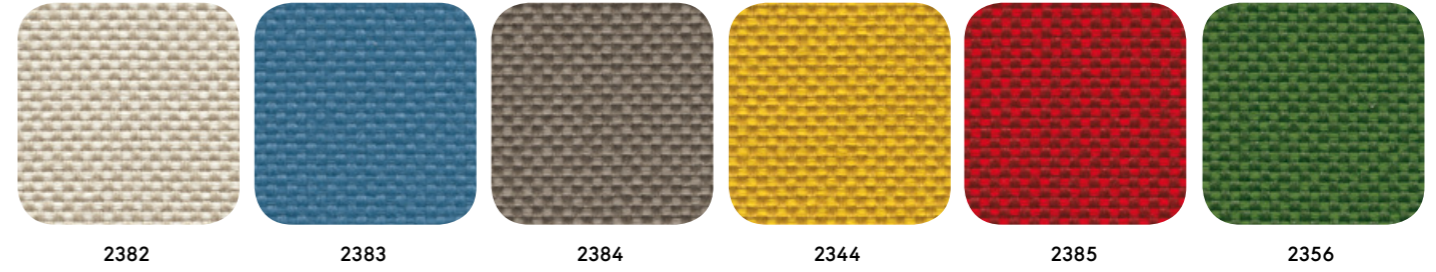
FLAMENCO (Cat. Select)



KING L KAT (Cat. Essential)

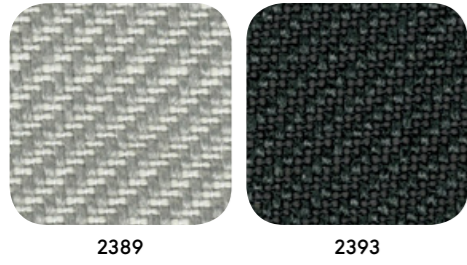
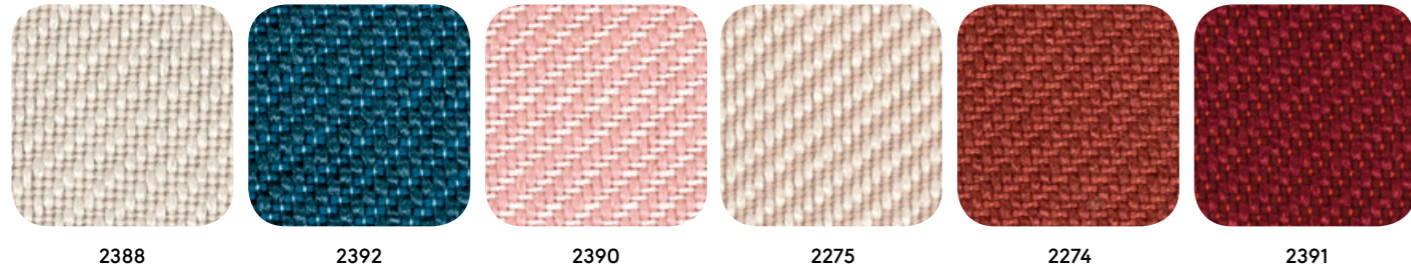


LASER N (Cat. Essential)

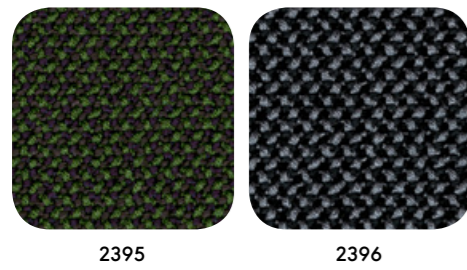
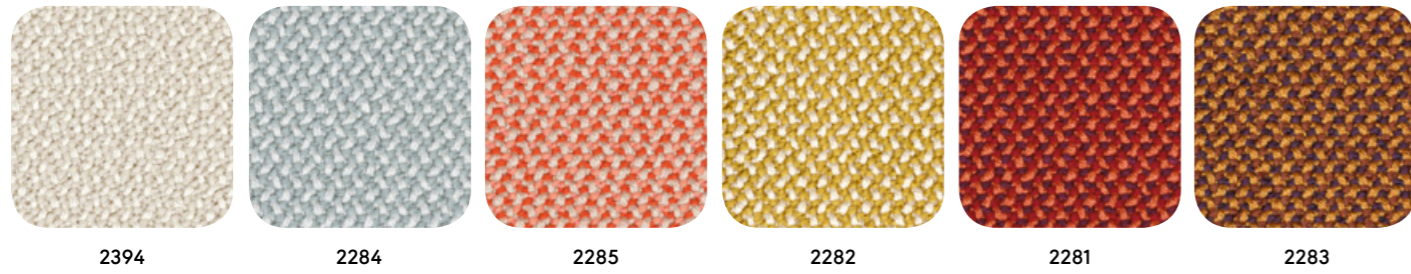


Fabrics

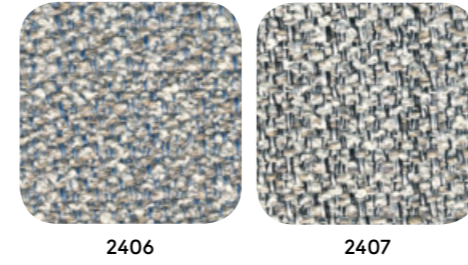
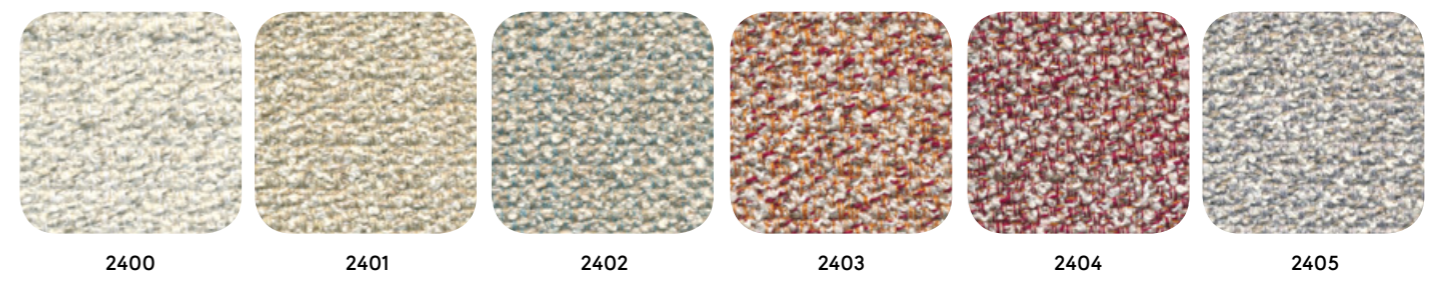
TWILLTENTY (Cat. Tailored)



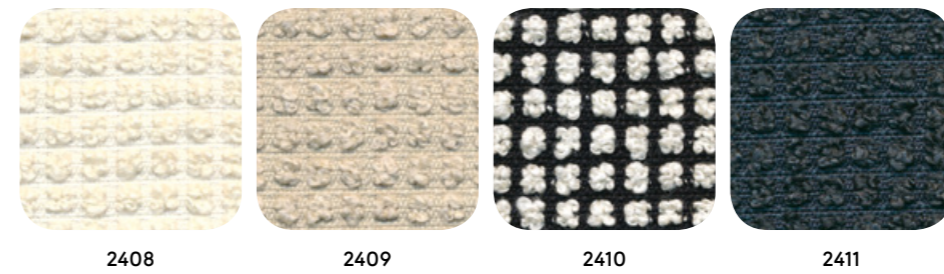
CREDO (Cat. Tailored)



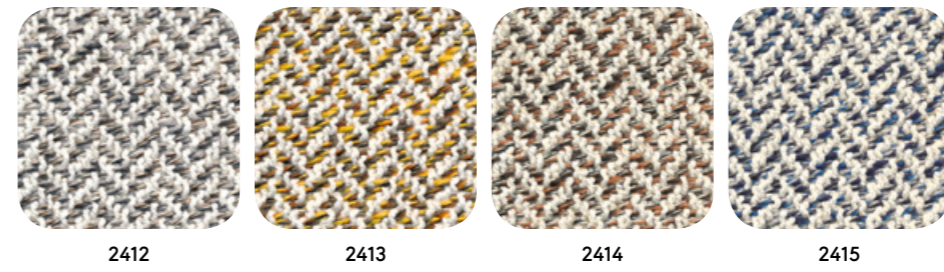
BOEMIAN (Cat. Select)



BRIONNE (Cat. Tailored)

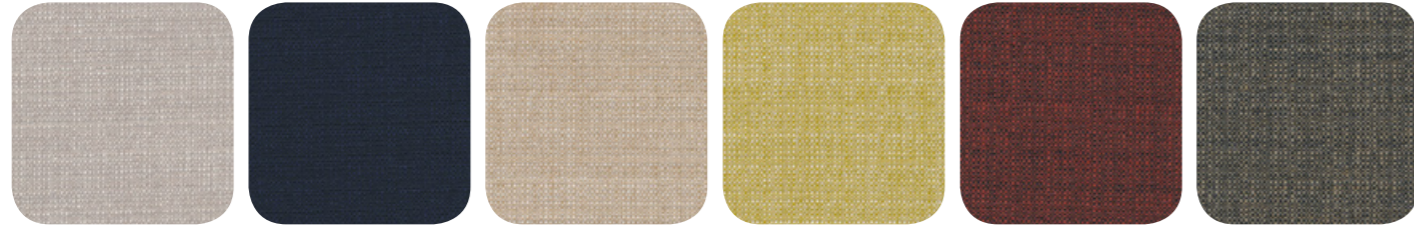


LINARI (Cat. Tailored)



Fabrics

OMBRA (Cat. Tailored)



2467

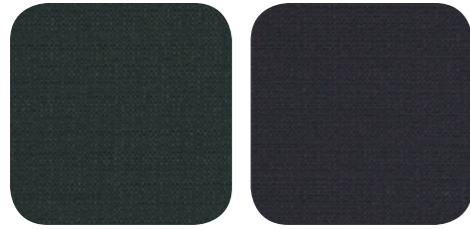
2505

2461

2468

2466

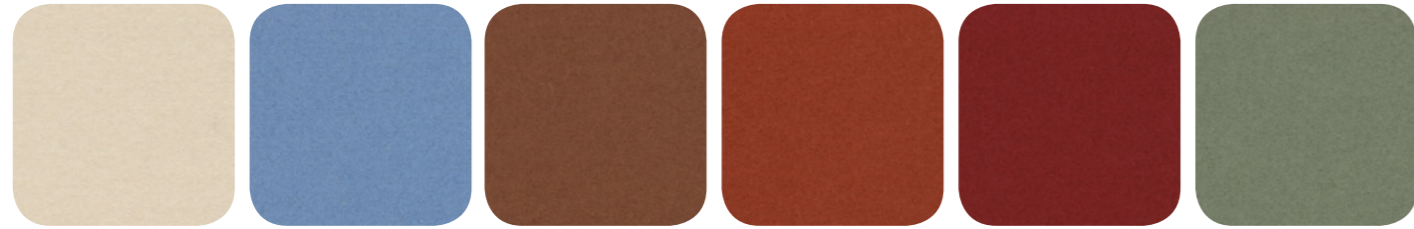
2462



2504

2503

DIVINA3 (Cat. Couture)



2294

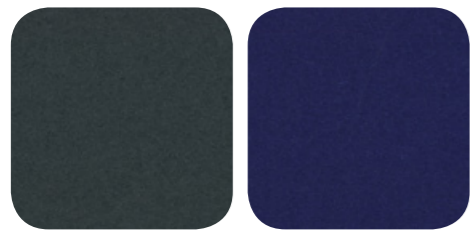
2459

2458

2460

1454

1519



2481

2502

Leather

SOFT UNITO (Cat. Tailored)



2397

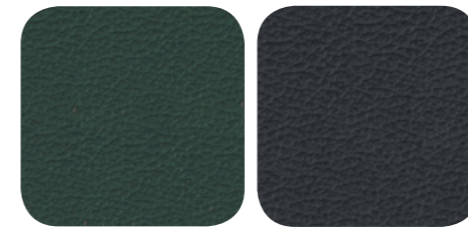
0953

2399

2398

0643

1181



0954

2439

Eco-leather

INCA (Cat. Essential)



1507

1191

0928

2366

2367

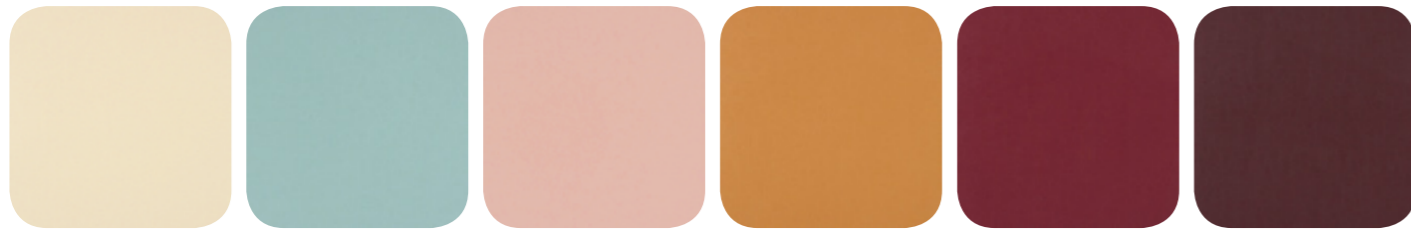
1649



1878

0924

MAGNUM (Cat. Select)



2368

2369

2370

2371

2372

2373



2374

2375

Steel



Ottonato
/ Brass

Ramato
/ Copper

Carbonio
/ Carbon

Cromato
/ Chromed

LACQUERED (Non standard RAL colours available on request)



Bianco
RAL 9016

Nero
RAL 9017

Grigio seta
RAL 7044

Table tops

LAMINATED MDF

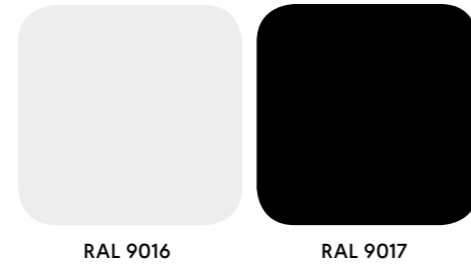


RAL 9016

RAL 9017

RAL 7044

HPL



RAL 9016

RAL 9017

LAQUERED MDF (Non standard colours available on request)



RAL 9016

RAL 9017

BEECH VENEER



Sbiancato
FG 0078

Naturale
FG 0003

Fango
FG 0027

Noce
FG 0012

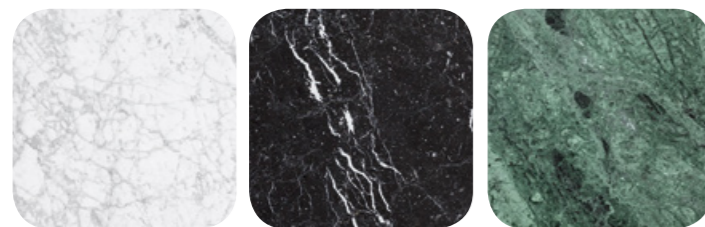
Wengé
FG 0025

WALNUT VENEER



Noce

MARBLE



Carrara

Marquina

Guatemala

GLASS



Extrachiaro
/ Extra-clear

Fumé
/ Smoked

Special finishes

The following finishes can be matched only with some products.

ROPE (Available only for Load and Sey)



Bianco / White
001

Nero / Black
006

Marrone / Brown
003

Canapa / Hemp
005

Giallo / Yellow
002

Rosso / Red
007

CELLULOSE ROPE (Available only for Fratina and Vincent v. G.)

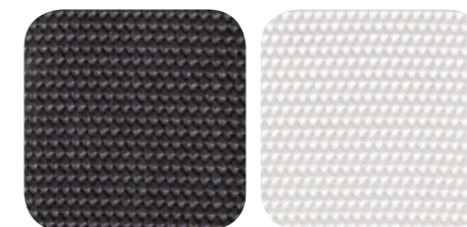


Antracite / Anthracite
0529

Testa di moro / Dark brown
0543

Avana / Hemp
0530

STRAPS (Available only for Fratina)



Nero / Black
1701

Bianco / White
1702

Special finishes

The following finishes can be matched only with some products.

- Available only for Marimba, Vincent v. G., Fratina
- Available only for Marimba, Vincent v. G.
- Available only for Marimba

HIDE



0537 •••

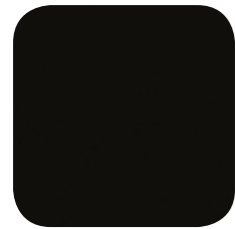
1545 •••

2335 •

2334 •

2336 •

2340 ••



0536 •••

Special finishes

The following finishes can be matched only with Marimba.

FULL-GRAIN LEATHER



2419

2421

2420

2463

FELT



2506

2510

2508

2471

2470

2509



2507

2511

Timènt

Fabric collection
by Cristina Celestino

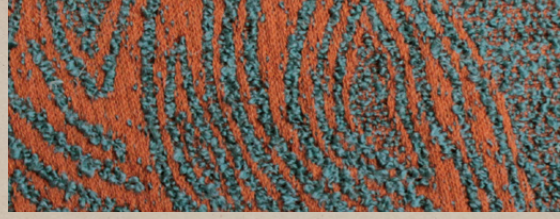
Timènt Fabric collection by Cristina Celestino



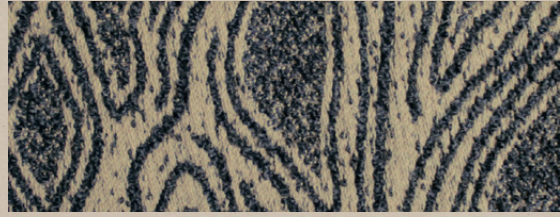
billiani
1911

billiani
1911

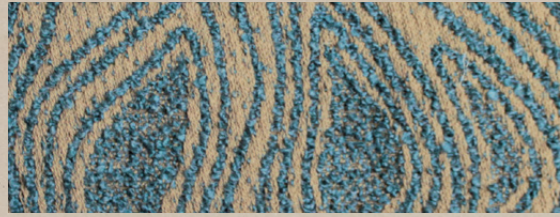
GRETO
Tailored



2634



2631



2630



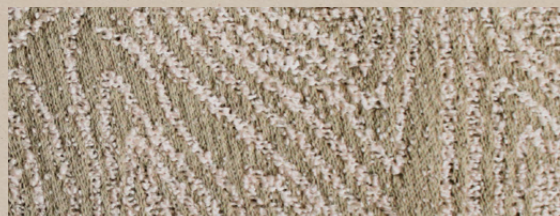
2633



2632



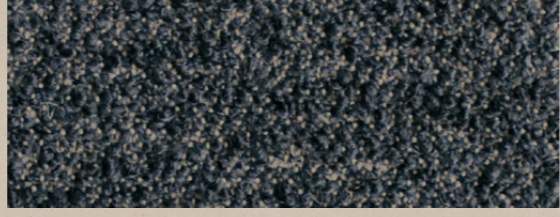
2629



2627



2628



2623



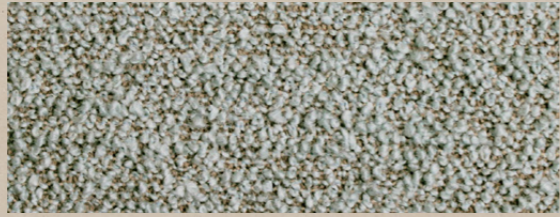
2624



2625



2626



2620



2622



2621

GOLENA
Tailored



2618



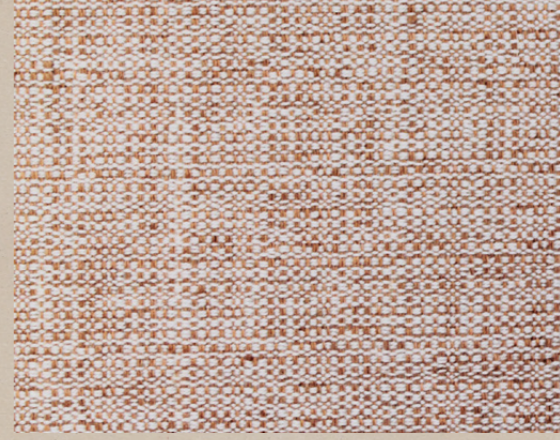
2619



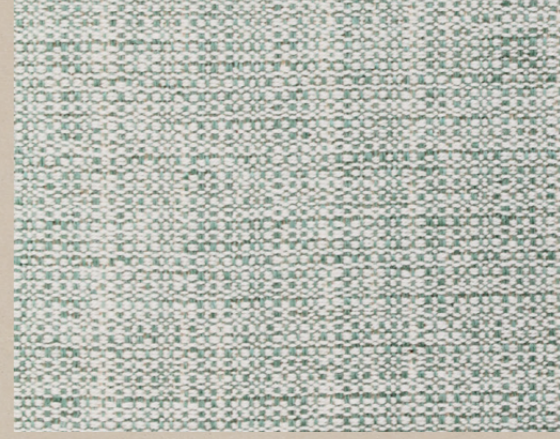
2617



2616



2614



2613



2615



2612

Caratteristiche tessuti / Fabric features

| | |
|--|--|
| Greto | |
| Composizione/ <i>Composition</i> | Greto Unito 52%CO-20%WO-18%PC-10%PA Greto Pattern 45%CO-23%WO-12%PA-20%PC |
| Martindale (resistenza all'abrasione/ <i>abrasion resistance</i>) | 35.000 cycles +/- 10% UNI EN ISO 12947-2:2000 |
| Solidità allo sfregamento/ <i>Rub fastness</i> | Dry 4-5 / Wet 2-3 (Black WET 2) UNI EN ISO 105-X12:1995 |
| Pilling | Grade 4/5 (change at 5.000 turns) UNI EN ISO 12945-2:2002 |
| Reazione al fuoco/ <i>Flame resistance</i> | BS 5852:2006 CIGARETTE BS 5852:2006 MATCH CAL TB 117:2013 |

| | |
|--|--|
| Golena | |
| Composizione/ <i>Composition</i> | Golena Unito 60%CO-35%CA-5%PA Golena Pattern 50%CO-43%CA-7%PA |
| Martindale (resistenza all'abrasione/ <i>abrasion resistance</i>) | 35.000 cycles +/- 10% UNI EN ISO 12947-2:2002 |
| Solidità allo sfregamento/ <i>Rub fastness</i> | Dry 4-5 / Wet 2-3 (Black WET 2) UNI EN ISO 105-X12:1995 |
| Pilling | Grade 3/4 (change at 5.000 turns) UNI EN ISO 12947-2:2000 |
| Reazione al fuoco/ <i>Flame resistance</i> | BS 5852:2006 CIGARETTE BS 5852-1 (1979) MATCH |

CRIB 5: Timènt is optionally available in the UNIQUE price category to include Billiani-supplied and fitted Crib 5 interliner.

Modulo pattern tessuto/Fabric pattern scheme



Greto 30,5x34 cm



Golena 32,5x33 cm