



*KaU Jute*

sigmar

**Aage and Kasper Würtz** are a father and son team of studio ceramicists based in eastern Jutland, Denmark.

Known internationally for their hand-thrown, hand-glazed ceramics they have produced bespoke collections for acclaimed restaurants around the world.

**sigmar**

263 Kings Road,  
London SW3 5EL  
Telephone: +44 (0)20 7751 5801  
[info@sigmarlondon.com](mailto:info@sigmarlondon.com)  
[www.sigmarlondon.com](http://www.sigmarlondon.com)

# Shapes



Small flat plate

D170 × H10 mm (#3)



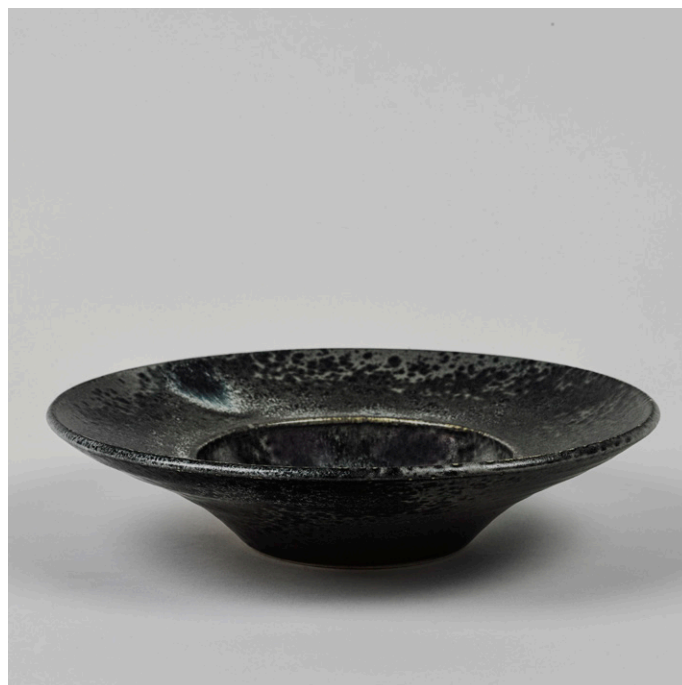
Medium flat plate

D230 × H10 mm (#5)



Large flat plate

270 × H10 mm (#6)



Large flat out bowl

D260 × H70 mm (#11)



**Small bowl**

D130 × H55 mm (#7)



**Medium shallow bowl**

D180 × H50 mm (#8)



**Medium deep bowl**

D180 × H85 mm (#10)



**Large deep bowl**

D230 × H135 mm (#12)



**Large shallow bowl**

D225 × H55 mm (#13)



**Cup**

D80 × H80 mm (#1)



**Small rimmed plate**

D130 × H15 mm (#2)



**Medium rimmed plate**

D175 × H25 mm (#4)



**Serving bowl**

D270 × H80 mm (#14)



**Serving platter**

D295 × H50 mm (#15)

# Glazes



A collection of ceramic plates and bowls featuring a smooth, ivory white glaze. The pieces are arranged in a cluster, with some overlapping. The glaze has a subtle, organic texture.

**glaze i**

A collection of ceramic plates and bowls featuring a white glaze with a mottled, yellowish-brown pattern. The pattern is dense and irregular, creating a textured, aged appearance. The pieces are arranged in a cluster, with some overlapping.

**glaze c**

A collection of ceramic plates and bowls featuring a white glaze with a mottled, brownish-grey pattern. The pattern is dense and irregular, creating a textured, aged appearance. The pieces are arranged in a cluster, with some overlapping.

**glaze a**

Glaze i Ivory white

Glaze c White and yellow

Glaze a White and brown

glaze g

glaze e

glaze f

Glaze g Grey

Glaze e Black

Glaze f Black and white

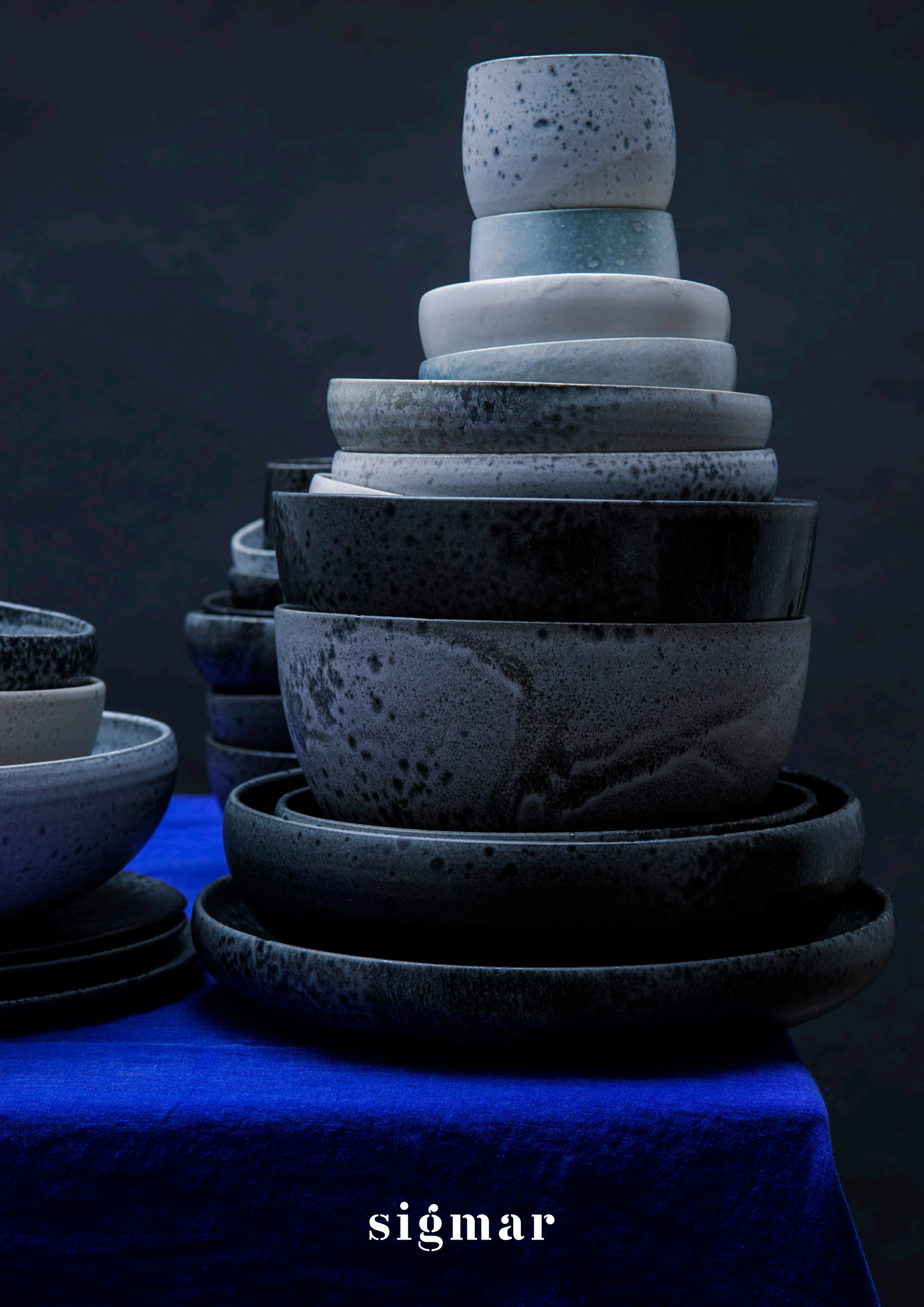
The image displays a collection of ceramic plates and bowls, each showcasing a different glaze. The glazes are labeled as 'glaze b', 'glaze d', and 'glaze j'. The plates are arranged in a scattered pattern, with some overlapping. The glazes range from light, speckled tones to darker, more textured blues. The text 'glaze b' is positioned in the upper left quadrant, 'glaze d' is in the middle right, and 'glaze j' is in the lower left. The overall aesthetic is minimalist and artistic, focusing on the texture and color of the ceramic surfaces.

glaze b

glaze d

glaze j

Glaze b White and soft blue  
Glaze d White and blue  
Glaze j Stone blue



sigmar