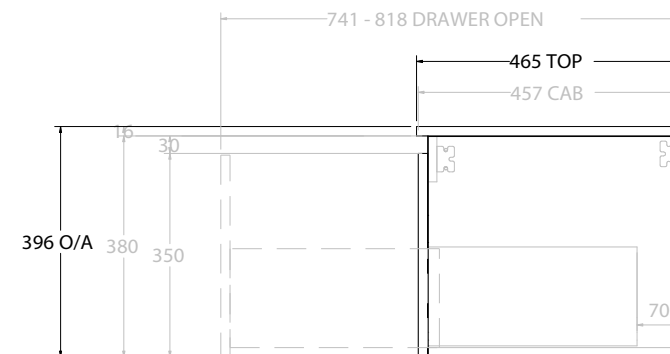
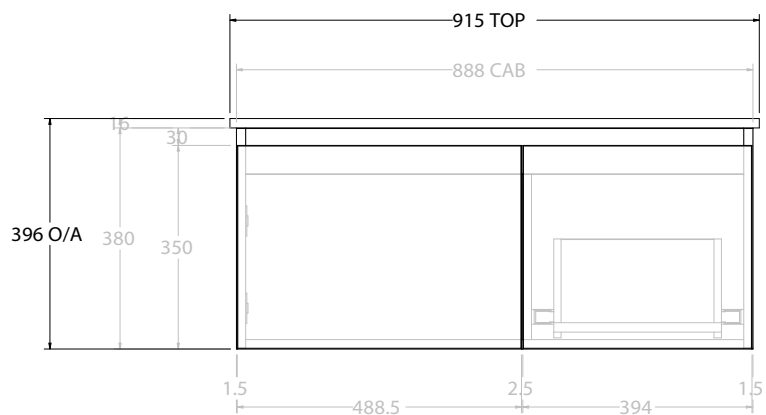
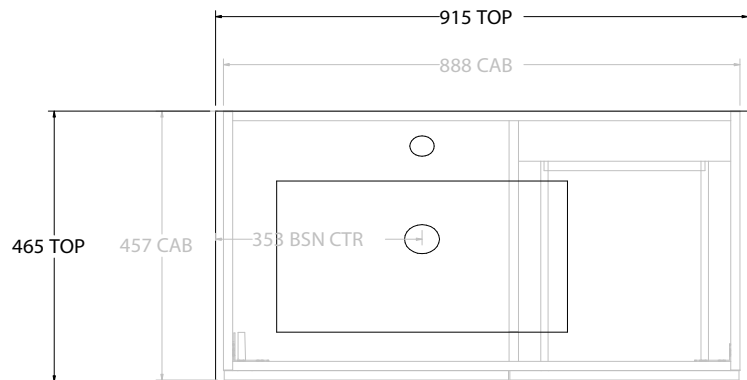


PRODUCT:	GLACIER DOOR & DRAWER SLIM 900 WALL HUNG CENTRE BASIN	
CODE:	LITE: GLLFCS0900WHCCE	PRO: GLPFCS0900WHCCE
MOUNTING:	WALL HUNG	
SIZE:	915W X 465D X 396H	
CONFIGURATION:	DOOR & DRAWER	
VERSION:	02	DATE: 15/03/2023

TOP:	CERAMIC GLACIER 900
BASIN POSITION:	OFFSET BASIN

NOTES:
ALL DIMENSIONS ARE NOMINAL AND SUBJECT TO CHANGE. DO NOT DRILL OR ROUGH IN UNTIL YOU HAVE RECEIVED AND MEASURED YOUR PRODUCT. ALL DIMENSIONS ARE IN MILLIMETRES. DO NOT MEASURE FROM DRAWING.



PRODUCT:	GLACIER DOOR & DRAWER SLIM 900 WALL HUNG OFFSET BASIN	
CODE:	LITE: GLLFCS0900WHLCE*	PRO: GLPFC50900WHLCE*
MOUNTING:	WALL HUNG	
SIZE:	915W X 465D X 396H	
CONFIGURATION:	DOOR & DRAWER	
VERSION:	02	DATE: 15/03/2023

TOP:	CERAMIC GLACIER 900
BASIN POSITION:	OFFSET BASIN

NOTES:
ALL DIMENSIONS ARE NOMINAL AND SUBJECT TO CHANGE. DO NOT DRILL OR ROUGH IN UNTIL YOU HAVE RECEIVED AND MEASURED YOUR PRODUCT. ALL DIMENSIONS ARE IN MILLIMETRES. DO NOT MEASURE FROM DRAWING. *LEFT HAND OFFSET PICTURED, RIGHT HAND OFFSET IS SAME BUT MIRRORED (REPLACE CODE SUFFIX L, WITH R)