

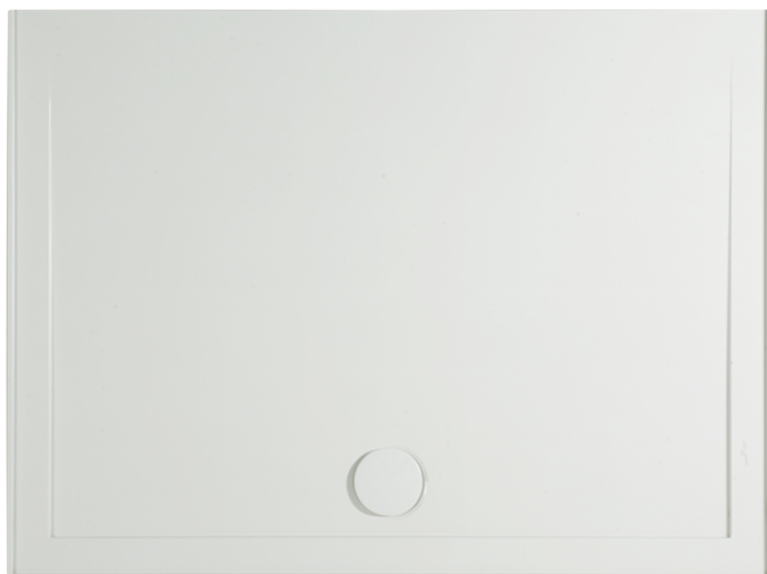
---

# SMC SHOWER BASES



1618904

900mm X 900mm



1618905

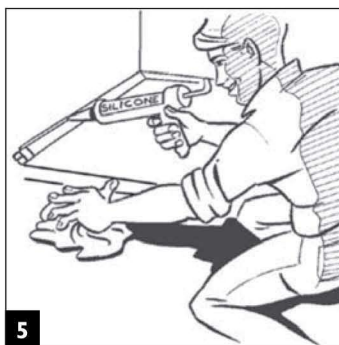
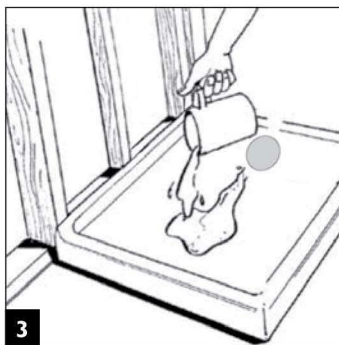
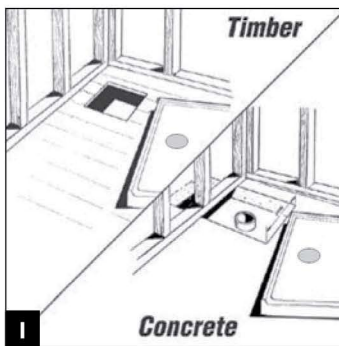
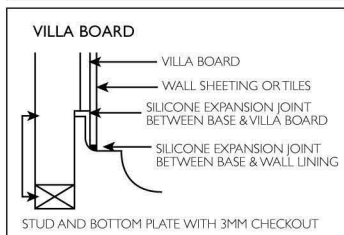
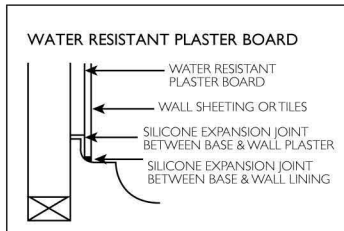
1200mm X 900mm

1200mm is the opening

- 
- LIGHT WEIGHT YET DURABLE
  - HIGH COMPRESSION MOULDED
  - LOW PROFILE
  - SMC = SHEET MATERIAL COMPOUND
  - DOMED WASTE TO HIDE UGLY FLOOR GRATE
  - BUILT IN FALL
  - TILE LIP ON 3 SIDED

# GLASSTONE

## Shower Base Installation



Water resistant plaster board installation. Glasstone shower base has a tile flange. Place base against framework, install water resistant plaster board directly on top of tile flange and seal joint with flexible silicone sealant.

Villa board installation. When using villa board the Glasstone shower base will need to be checked into framework a minimum of 3mm. Install villa board directly on top of tile flange and seal joint with flexible sealant.

1. Floor boards or sheet flooring must cover the entire underside of the base. Cut hole through floor no greater than 200mm x 200mm (concrete should be 300mm x 300mm).

Note: If doing a renovation please check floorboards for soundness as rotting may have occurred and flooring may need replacing.

2. Glasstone shower base may be installed on silicone or similar adhesive over entire base area. Lay base on floor and check for level both sides and front & rear. This will allow base to drain effectively as it has inbuilt fall to waste outlet.

Note: If your floor is not level use a cement based tile adhesive spread on floor with a 12mm notched trowel to ensure base is fully supported.

3. Finally it is imperative to test for water run off to the waste outlet prior to lining shower walls. This will ensure base is draining correctly. Failure to do so will breach the guarantee.

4. It is recommended that you cover and protect the base until it comes into service. In case of damage, instructions are available from Australian Polymore.

5. Silicone the bottom edge of the shower wall to the base before the screen is fitted. Silicone is also required around the tap spindles and shower rose outlet.

### Cleaning

The surface of this base will resist surface build-up. However, to preserve its high lustre it may be cleaned with a soft cloth using warm soapy water or household detergent.

### Avoid All Forms Of Abrasive

If accidental abrasions occur the surface brilliance can be restored by polishing with silicone-based polish.

### Warranty

Australian Polymore Glasstone base has a warranty for Five years against faulty materials or workmanship.

### Warning

Warranty will be voided if temperature from tap exceeds 55°C and above instructions are not adhered to exactly.



www.polymore.com.au  
sales@polymore.com.au