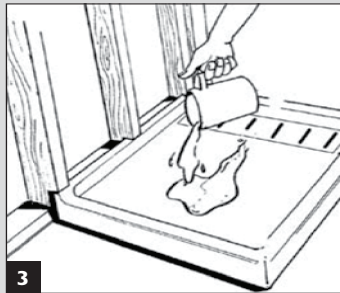
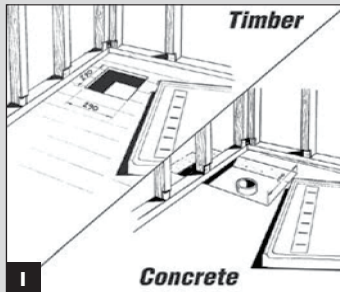
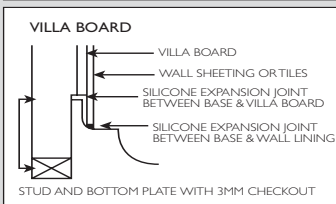
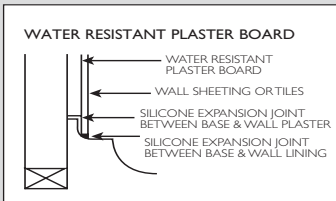


# barossa shower base

## INSTALLATION GUIDE



NOTE: Please check min max adjustments of your shower screen before commencing installation.

The following should be taken into account to determine if the installation method used will be suitable for the screen selected.

Check-in depth	Wall lining thickness
Tiles or Acrylic walls	Front and Return tile flange

**Water resistant plaster board installation.** The Barossa shower base has a 9mm tile flange. Place base against framework, install water resistant plaster board directly on top of tile flange and seal joint with flexible silicone sealant.

**Villa board installation.** When using villa board the Barossa shower base will need to be checked into framework a minimum of 3mm. Install villa board directly on top of tile flange and seal joint with flexible sealant.

1. Floor boards or sheet flooring must cover the entire underside of the base. Cut hole through floor no greater than 200mm x 200mm (concrete should be 300mm x 300mm). Note: If doing a renovation please check floorboards for soundness as deterioration may have occurred and flooring may need replacing.

2. The Barossa shower base may be installed with silicone or similar adhesive applied over the entire base area. Lay base on floor and check for level both sides and front & rear. This will allow base to drain effectively as it has inbuilt fall to waste outlet. **Note: If your floor is not level a 10mm levelling bed of mortar under the base will ensure your base drains correctly.**

3. It is imperative to test for water run off to the waste outlet prior to lining shower walls. This will ensure base is draining correctly. Failure to do so will breach the guarantee.

4. It is recommended that you cover and protect the base until it comes into service. In case of damage, instructions and repair kit are available from Gemini Industries.

5. Silicone the bottom edge of the shower wall to the base before the screen is fitted. Silicone is also required around the tap spindles and shower rose outlet.

**Note: The Stainless Steel grate is not to be siliconed into position.**

### Cleaning

The surface of this base will resist surface build-up. However, to preserve its high lustre it may be cleaned with a soft cloth using warm soapy water or household detergent.

### Avoid All Forms of Abrasive

If accidental abrasions occur the surface brilliance can be restored by polishing with Marbletrend Ultra Gloss™ or similar silicone-based polish.

### Guarantee

Barossa shower bases are made from high strength polymarble. The shower base is guaranteed for fifteen years against faulty materials or workmanship.

### Warning

Guarantee will be void if temperature from tap exceeds 55°C and above instructions are not adhered to exactly.

**FOR FURTHER INFORMATION PLEASE CONTACT US:**

**HEAD OFFICE (SYDNEY)**

2/97 Banksia St, Botany, NSW 2019  
T 1300 717 717 F 1300 746 480

**MELBOURNE**

31 Koornang Rd, Scoresby, VIC 3179  
T 1300 717 717 F 1800 225 315

**BRISBANE**

1/477 Newman Rd, Geebung, QLD 4034  
T 1300 717 717 F 1300 746 480

**PERTH**

27 Harris Rd, Malaga, WA 6090  
T 1300 717 717 F 1800 225 315

**ADELAIDE**

Rep: Angelo Pansini  
T 0499 221 201 F 1800 225 315

**HOBART**

Rep: Bob Moore  
T 0428 223 116 F 1800 225 315

**DUBBO**

Rogers Agencies  
6 Richard Ryan Pl, Dubbo NSW 2830  
T 1300 717 717 F 1300 746 480

Email [sales@marbletrend.com.au](mailto:sales@marbletrend.com.au)