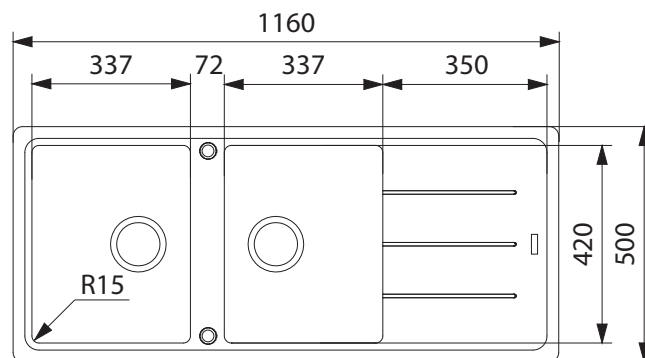


BFG 621 ONYX REV BASIS SINK



PRODUCT INFORMATION

Installation	Topmount
Dimensions	1160(W) x 500(H) mm
Cabinet Base	800mm
Bowl Size	337(W) x 420(H) x 190(D)mm/ 27L (x2)
Bowl Radius	15mm
Cut-Out Size	1144 x 484mm
Cut-Out Template	No
Waste Outlet	Semi Integrated Waste
Overflow	Yes
Tap Holes	ø35mm (Part Drilled)
Remote Waste	Yes
Finish	Fragranite



1 ACCESSORIES AVAILABLE **1** ACCESSORIES INCLUDED

ACCESSORIES

1



CB 750
Chopping Board

2



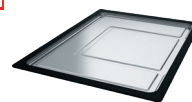
DB 784
Drainer Basket

3



RM 44
Rollamat

4



DT 360
Extension Drainer

LAST UPDATED: 14 NOV 2019