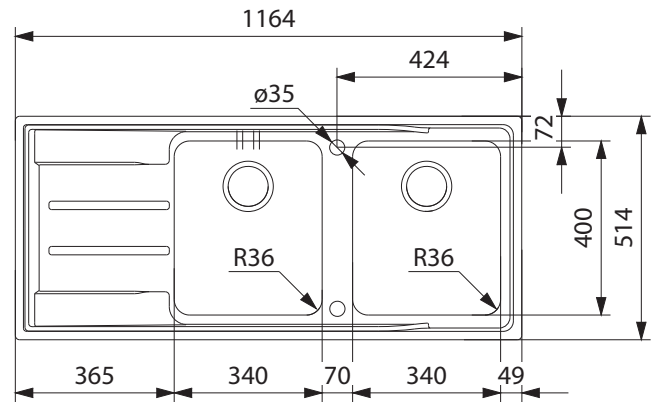


ATON

ANX221LHD



PRODUCT INFORMATION

Installation	Topmount/Flushmount
Dimensions	1164 x 514mm
Cabinet Base	800mm
Bowl Size	340 x 400 x 190mm/25L (x2)
Bowl Radius	36mm
Cut-Out Size	Topmount: 1155 x 506, cr=20 Flushmount: utilises DXF file
Cut-Out Template	Yes
Waste Outlet	Semi Integrated Waste
Overflow	Yes
Tap Holes	ø35mm
Remote Waste	Yes
Finish	Stainless Steel
Warranty	50 Years

NOTE: Cut-out dimensions are a guide only, please use the actual sink as your template.

FEATURES & BENEFITS



Food Preparation Centre



18/10 Stainless Steel



Push Button Remote Waste



Hidden Overflow



Sound Deadening Pads

ACCESSORIES

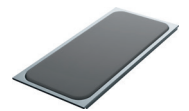
— Included Accessory
- - - Available Accessory



PB835
Push Button Waste



RM42
Rolalimat



CB104
Chopping Board



SB112
Strainer Bowl



DB448
Drainer Basket



CR113
Champagne Flute Rack



DT651
Extension Drainer

BARE SINK OPTION AND SOME SINK & TAP PACKAGES DO NOT INCLUDE ACCESSORIES. PLEASE CHAT TO YOUR SALES CONSULTANT FOR FURTHER INFORMATION.

LAST UPDATED: 21 SEPTEMBER 2021

FRANKE