



# Siemens Definition AS 64

RELOCATABLE CT TRAILER  
PLANNING GUIDE  
CT11



## Our Mobile Rental Solutions

At Scandinavian Medical offer solutions that differ from other rental solutions on the market, providing a flexible, cost-effective solution tailored to your requirements, timeline, and budget.

Our team has developed a unique and flexible rental concept, which provides you with a wide selection of customized alternatives to high-cost OEM equipment at a fixed monthly rate. There are no heavy investments, no risks, and no residual value.

Our company offers short – and long-term rental solutions - from fixed-site to trailers and modular rental solutions. Regardless of the challenges you face - be it replacement of equipment, breakdowns, bridging periods, or back-locks - we offer excellent solutions that ensure you can avoid downtime and optimize your scan capacity. With a medical solution from Scandinavian Medical Solutions, we will help you by reducing downtime, preventing relocations of patients, and ultimately lost revenue.

## System Specifications

- **Brand:** Siemens
- **Model:** Definition AS 64
- **YOM:** 2011
- **ID number:** SMS-R51295
- **Condition:** Good condition
- **Tube type:** Straton MX
- **Slices:** 64
- **Operation system console:** syngo CT 2012B
- **SW version console:** VA44A
- **Additional info:** Located in SMIT trailer (YOM 08-12-2011)
- **SW options console:** Cap 3d SSD, Cap 3d MIP, Cap 3d Main, Cap 3d Voimode, Get Worklist, Cardio Pro, Cardio Retro, Bolus Track, CA Score, Care Dose, Syngo General, Cap 3dVRT, Cap 3dEditor, MPPS Support, Volume Workflow, CTAPP Main, CTAPP VRT, CTAPP MIP, Cardio Best phase finding, CTAPP Phase viewer, Definition AS, Care Dose Adjust, Care Dose Profile, Care Dose Dashboard, Voltage 70Kv, Care Dose AutoKv, Recon Iterative Step1, Scan Tilted Spiral, MR support I







# CT Building with Dimensions and Weight

Dimensions: Height: 4 Meters, Width: 4 Meters, Length: 13,5 Meters

The total weight of a SMIT trailer is usually about **34 tons**.

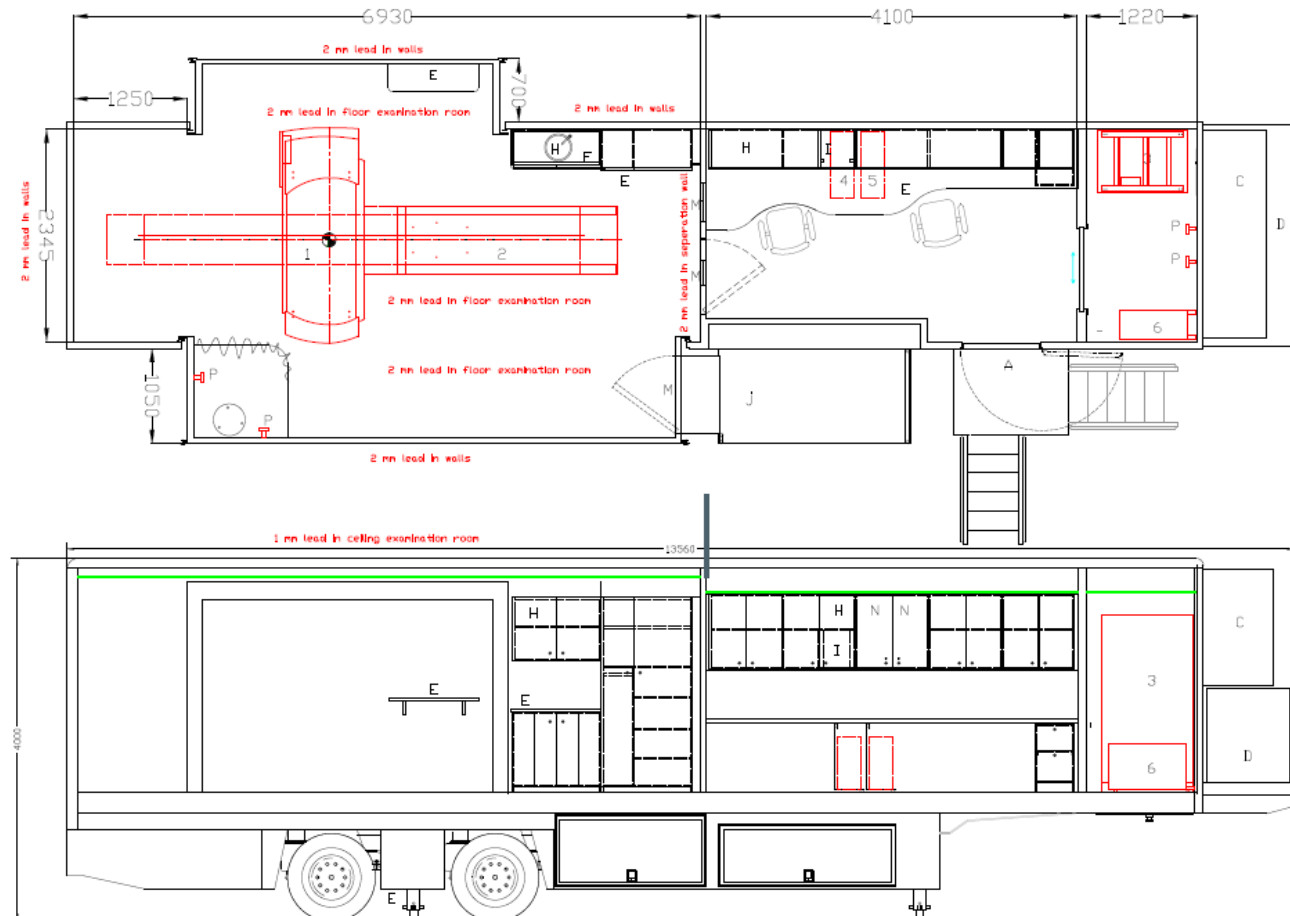


Figure 1: CT building (can differ in furnishing and positioning of doors)

## Environmental Requirements

---

All necessary administrative consents needed for the unit installation in the indicated area and for entry and unloading should be provided. Also, permission to enter and work the crane from 6am to 6pm must be provided.

It is necessary to prepare and secure the access road to the entry of heavy equipment and the foundation of the unit.

## Physical Requirements

---

- Area that must be provided: 16m x 6m.
- A clearance of at least 2m is required around the unit as means to ensure that the unit can be maintained properly. Exceptions to the above written requirement must be approved by a Scandinavian Medical Solutions representative.
- Siting of the unit must be made on a solid surface, which must be level, with a maximum 1% gradient (0,6 degree), with a loading capacity of 27 tons. The site area must also be able to carry the weight of the truck.
- When the unit is deployed – and in use – each of the four hydraulic legs should be supported by a concrete pad (1m<sup>3</sup> with a load capacity of at least 8500kg).



## CT Unit Connection

---

It is necessary to ensure power supply and connection of the building by a person with appropriate qualifications.

## Electricity

---

- Applying power to the main power connection, connecting the building to electricity, and performing protective measurements after connecting the power supply are the responsibility of the user. These activities must be performed by a person with appropriate qualifications.
- Power requirement for power supplied from main supply is minimum 125 Amp per phase 3 phase plus Neutral and earth (400V)

Building with CT system: 125A

Mains supply: 400V

Frequency: 50/60Hz

Power cable 10m with DS2 - 250A Marechal connector.



## Internet connection

---

The internet connection for the scanner system and external computer is located on the left side, next to the main electrical connection.

## Water

---

This unit is equipped with a sink. It can provide hot and cold water, if it is connected to a clean, cold-water supply. Moreover, a wastewater outlet would need to be connected for this facility to be utilized.

The Water connection is located on the right side of the trailer, below the service lift.

## Prior to delivery

---

- The route to the installation location must be trafficable for the truck and unit with reference to the “Vehicle access requirements” found just below.
- All obstacles such as parked cars, low branches, or other potential non-conformities to failure-free access must be removed prior to delivery.
- A Scandinavian Medical Solutions project manager is available for a site survey and consultation prior to the delivery. The representative will advise you on the siting and placement of the unit as well as access requirements.
- If a site visit is requested by the customer, Scandinavian Medical Solutions reserves the right to invoice

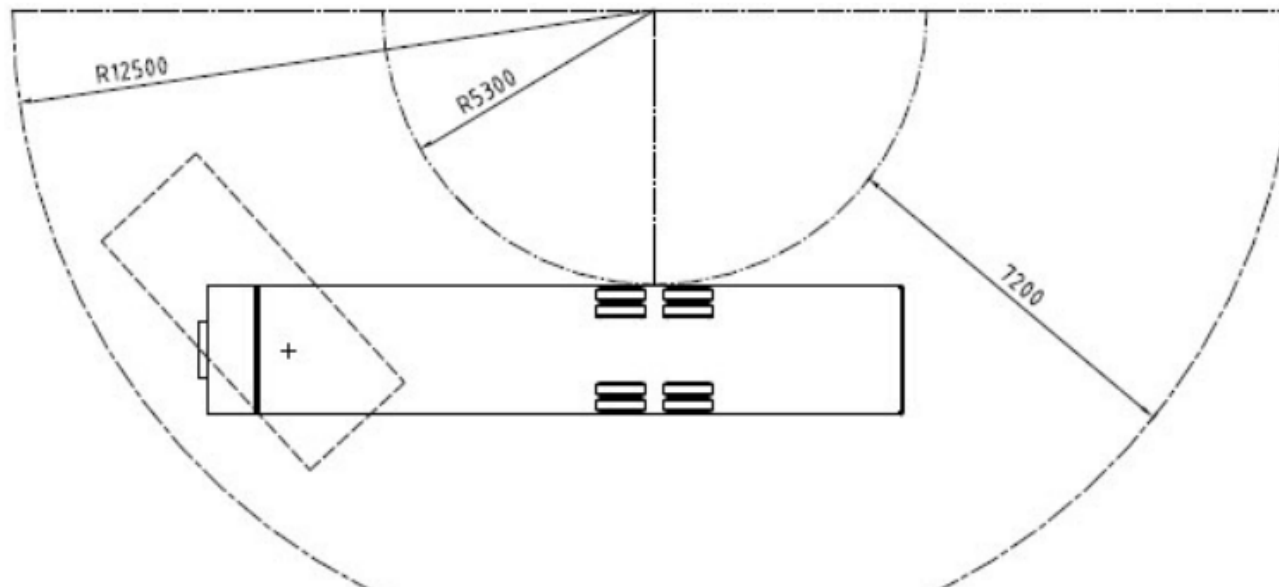
the expense separately.

## Access Requirements

---

- The accessway must have a minimum width of **7,2 m**.
- The radius of the turning circle should have an outer radius of **12,5 m**. and an inner radius of **5,3 m**.
- The client is responsible for all necessary preparations regarding the installation location, the access route, as well as the provision of the required connections, advised by the Scandinavian Medical Solutions project manager.

*Figure 1: CT building (can differ in furnishing and positioning of doors)*



## Contact

---

 +45 53 70 11 38 or +45 25 31 80 80

 Gasvaerksvej 48, 1st Floor Right, 9000 Aalborg, Denmark

 [scandinavian-medical.com](http://scandinavian-medical.com)

 [rental@scandinavian-medical.com](mailto:rental@scandinavian-medical.com)