

# Bidop 7

**BI-DIRECTIONAL HAND HELD DOPPLER  
WITH LCD & GREAT SOUNDS**



# BI-DIRECTIONAL HAND HELD DOPPLER WITH COLOR LCD

## Bidop 7

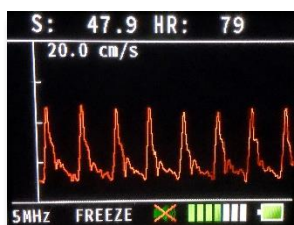
- Newly advanced Great Sounds
- Snap-lock connector for easy insertion and removal
- Advanced Menu Screen for easy operation

- 30 waveform memory and USB interface
- Blood volume flow calculations
- PPG probe (Option)
- PPG-BP mode for toe pressures

### CLINICAL APPLICATIONS

- Detection of arterial and venous blood flow velocity for vascular disease.
- PEAK & MEAN blood velocity determinations.

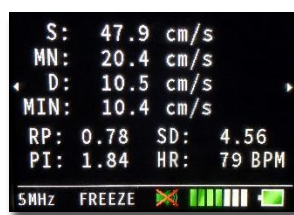
### DISPLAY SAMPLE



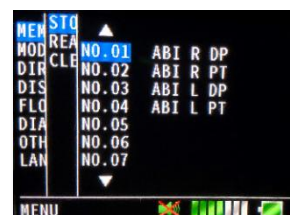
Velocity waveform



PPG AC waveform



Velocity parameters



30 waveform Menu

### ACCESSORIES

Carrying case/ AC adaptor/ Ultrasonic gel

### DOPPLER PROBES

**Standard (Clinic):** 2, 4, 5, 8 & 10MHz



#### Optional probes:

- Pencil<sup>\*1</sup>: 8MHz
- Flat: 8MHz

#### Sterilizable probes: (Amplifier required)

- Pencil: 8, 10 and 20MHz<sup>\*2</sup>
- Autoclavable: 8MHz
- Amplifier: 8, 10 and 20MHz<sup>\*2</sup>

Other probes available

<sup>\*1</sup>: Standard pencil probe is not available on European Union Countries.

<sup>\*2</sup>: 20MHz probe is not available on European Union Countries.

### OPTIONS

#### Windows software:

- Smart-V-Link for Windows

#### PPG options:

- PPG probe (PG-30)
- Toe cuff (DVC-1.9H/ DPC-2.5H)
- PPG clip
- Spymomanometer



### SPECIFICATIONS

**Power Supply:** Ni-MH rechargeable battery pack or AC adaptor

**Automatic shut-off:** No signal: 2min. /Freeze: 5min.

**Max speaker output:** 1.3W or more

**Multi frequency:** 2, 4, 5, 8, 10 and 20MHz<sup>\*2</sup>

**Mode settings:** Memory, Direction, Scale, Volume flow, Language, etc.

**Waveform memory:** 30 waveforms

**LCD display:** 320 x 240 dots, 3.5-inch TFT Color LCD

**External Outputs:** Headset connector  
USB port for PC connection

**Dimensions:** 116.5 (W) x 214 (L) x 60.5(H) mm (Probe holder not included)

**Weight:** 570g (Probe included)

**Options:** PPG probe, Smart-V-Link, & etc.

**Electrical safety:** Conforms to IEC60601-1

<sup>\*2</sup>: 20MHz probe is not available on European Union Countries.

Specifications are subject to change.



**Hadeco, Inc.**

2-7-11, Arima, Miyamae-ku, Kawasaki, Kanagawa,

216-0003, Japan

TEL: +81 44 877 4361/ FAX: +81 44 855 7301

http://www.hadeco.co.jp



080-00215-01  
Printed in Japan