



Enjoy the World's Best Polarized Light, Hands-Free.

The Syris v900L visualization system combines a proprietary superior white-light LED with two-way polarization to enhance your vision removing surface glare from the patient's skin, promoting improved viewing of sub-surface features.

The v900L is ideally suited for:

- Vascular Laser Treatments
- Sclerotherapy
- Pigmented Lesions
- Thermo-Coagulation Devices
- Hair-removal/Grafting/Transplantation
- General Skin Exams and Procedures
- Botox or Filler Treatments
- Tattoo Removal



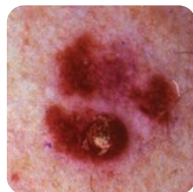
Without Syris



With Syris



Without Syris



With Syris

Ergonomic Headgear

Padded, dual-adjustment design for a most comfortable fit



Adjustable Polarization

Highlight surface and sub-surface features



Visi-Shield™

Unobstructed field of view and 2.0x and 2.5x magnification options

Waist-Mounted Battery Unit

Dual brightness control in waist-mounted battery unit plus up to 4 hrs of continuous use.



Charger Included

Convenient charging base allows you to charge a second battery (sold separately) for uninterrupted use.

