

All-in-One

TM-2441

TM-2440



The TM-2440 and TM-2441 have been validated in accordance with ISO protocols. Lightweight and compact design facilitates easy operation by patients and research participants. New features allow for the detection of Irregular Heartbeat (IHB) as well as standard ABPM measurements. The TM-2441 also has an LCD screen and slide switch to enable easy self-measurement. Collects data on various external factors (temperature, pressure, etc.) that influence blood pressure fluctuations. Included software provides useful analysis from data collected.

New global and regional guidelines recommend Out-of-Office measurements

		TM-2441	TM-2440
External Dimensions	W × H × D (cm)	66 × 24.5 × 95	66 × 24.5 × 95
Weight	Without batteries	135g	120g
Power Supply	Alkaline or Ni-MH "AA" batteries	2 × LR6("AA")	2 × LR6("AA")
Memory Data	Number of datasets	600	600
BP Measurement Function	ABPM	✓	✓
	Self-Measurement	✓	—
IHB	Irregular Heart Beat	✓	✓
Record Pulse wave	Use analysis software	✓	✓
Multi sensor	Activity / Temperature / Atmospheric pressure	✓	—
Data communication	USB1.1 compliant	✓	✓
	Bluetooth (SDK available for Medical Developer)	✓	—
Display	LCD: Self -BP measurement display	✓	—
	OLED: ABPM display	✓	✓
Clinical trial	ISO 81060-2:2013	✓	✓

**Made in
Japan**

Ambulatory Blood Pressure Monitor

TM-2441

All-in-One

Clinically
Validated

CE 0123

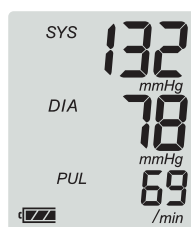
TM-2441 can process five types of self-measurement while recording environmental data (temperature, pressure, activity) through a multi-sensor. It is an "All-in-One" model that covers any environment from the doctor's office to home. Pulse data during BP measurement is recorded in the device, with analysis software (included) providing the precise waveform. Viewing this data improves the accuracy of BP measurements and helps to verify irregular pulse waves¹.

- 24-hour ambulatory blood pressure monitoring
- Self-measurement
 - OBP : Office Blood Pressure
 - AOBP : Automated Office Blood Pressure
 - HBP : Home Blood Pressure
 - ANBP : Automated Night Blood Pressure
 - ASBP : Automated Self Blood Pressure
- Easy to use mode slide switch
- New pulse correction algorithm for faster measurement & noise rejection
- Battery Power (2 alkaline or Ni-MH "AA")
- Output to data to analysis software (included with device)
- USB & BLE² Connectivity
- Ingress protection IP22
- Protocol ISO810601

1) Hypertension CANADA
2) SDK available for Medical Developer



▼ Self measurement mode displays



LED display: This large display shows data from measurements in self-measurement mode. You can easily check the time until the next ABPM measurement in addition to values in self-measurement mode. There are also icons for battery level, Bluetooth status, IHB detection, clock, mode and memory status.

TM-2440

Clinically
Validated

CE 0123

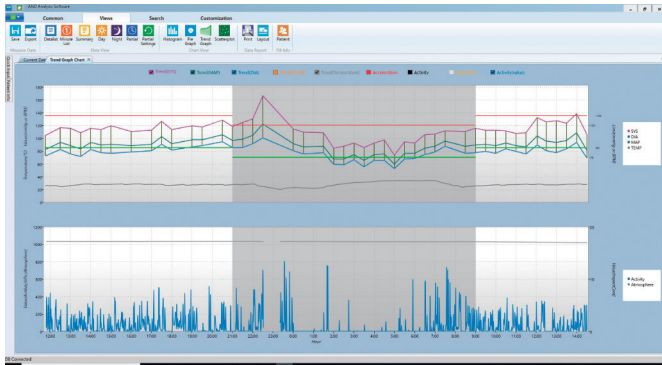
A&D's TM-2440 is an entry-level model designed for ABPM measurement. Its compact body simplifies the monitoring of research participants and comes standard with an Irregular Heartbeat (IHB) function, which detects pulse irregularities and can check waveforms easily via analysis software (included). The new features in the TM-2440 support ABPM measurement.

- 24-hour ambulatory blood pressure monitoring
- Light weight & compact size
120g*, 66(W)×24.5(H)×95(D) mm *Without batteries
- OLED display (ABPM mode)
- New pulse correction algorithm for faster measurement & noise rejection
- Battery powered (2 alkaline or Ni-MH "AA")
- Output of data to analysis software (included with device)
- USB connectivity
- Ingress protection IP22
- Protocol ISO810601



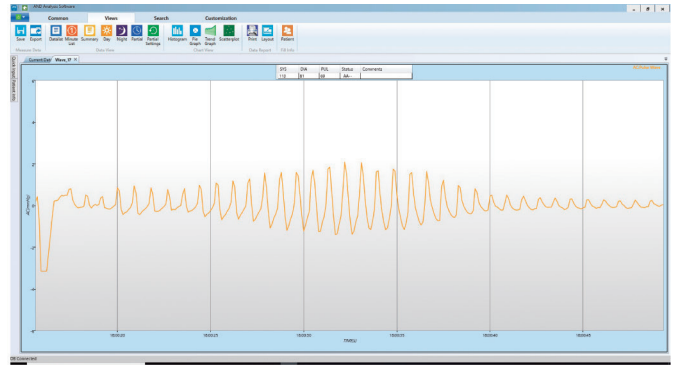
Analysis Software Included with every unit

▼ Multisensor data analysis with new software

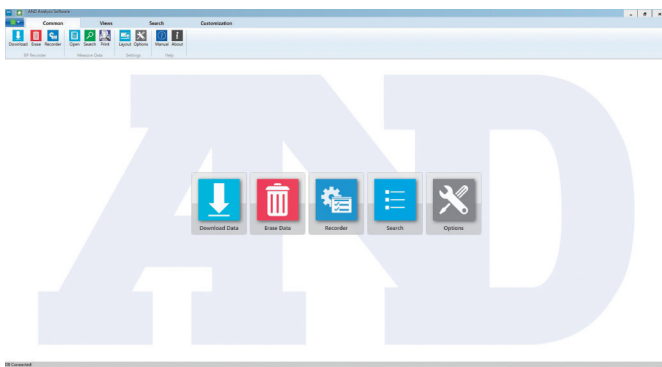


The newly designed software can analyze environmental data collected by the multi-sensor in addition to ABPM measurement data. Temperature, pressure and activity can be graphed alongside blood pressure. TM-2441 only (TM-2440 does not have a multi-sensor)

▼ Waveform data recording and displaying



The TM-244x series records blood pressure as an oscillometric waveform. With our new analysis software you can check the waveform record for each measurement. Quickly determine the accuracy of measured values.



◀ System requirements

Computer CPU: 1GHz or higher processor

Memory: 1GB or more (×86), 2GB or more (×64)

Operation System (recommended) :

Windows 10 (×86/×64)

Windows 8.1 (×86/×64), Windows 7 (×86/×64)

SVGA: Recommended 800×600 pixels or more

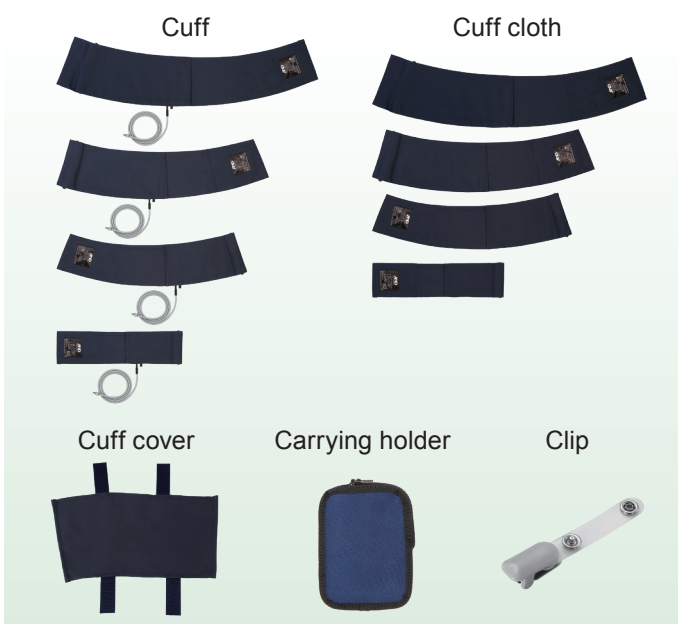
Disk: CD drive (drive corresponding to enclosed media)

Hard disk: Available space of 16GB or more (×86),

Available space of 24GB (×64)

Printer: Environment in which XPS format files can be printed

Options



- | | |
|----------------|---|
| TM-CF502A | Extra large cuff for left arm (36-50cm) |
| TM-CF402A | Large cuff for left arm (28-38cm) |
| TM-CF302A | Adult cuff for left arm (20-31cm) |
| TM-CF202A | Small cuff for left arm (15-22cm) |
| TM-CF802A | Adult cuff for right arm (20-31cm) |
| TM-CF306A | Disposable cuff (10 sheets) |
| AX-133024503-S | Extra large cuff cover for left arm (10 sheets) |
| AX-133024663-S | Large cuff cover for left arm (10 sheets) |
| AX-133024500-S | Adult cuff cover for left arm (10 sheets) |
| AX-133024667-S | Small cuff cover for left arm (10 sheets) |
| AX-133024353-S | Adult cuff cover for right arm (10 sheets) |
| AX-133025103-S | Extra large cloth for left arm (2 sheets) |
| AX-133025102-S | Large cuff cloth for left arm (2 sheets) |
| AX-133024487-S | Adult cuff cloth for left arm (2 sheets) |
| AX-133025101-S | Small cuff cloth for left arm (2 sheets) |
| AX-133025104-S | Adult cuff cloth for right arm (2 sheets) |
| AX-133025995 | Carrying holder |
| AX-110B-20-S | Clips (5 pieces) |

Specifications

	TM-2441	TM-2440
Measurement Method	Oscillometric measurement method	
Pressure detection method	Semiconductor pressure sensor	
Pressure display range	0 to 299 mmHg (299 mmHg or more is hidden)	
Measurement accuracy	Pressure : ± 3 mmHg Pulse rate : ± 5 %	
Minimum display division	Pressure : 1 mmHg Pulse rate : 1 beat / minute	
Measurement range	Systolic pressure : 60 to 280 mmHg Diastolic pressure : 30 to 160 mmHg Pulse rate : 30 to 200 beat / minute	
Pressurization method	Micro pump	
Automatic pressurization	85 to 299 mmHg	
Interval Setting	Intervals at each section which divides 24 hours up to maximum six parts. Interval : OFF, 5, 10, 15, 20, 30, 60, 120 minutes	
Display	A-BPM : OLED, 96 × 39 pixels, white characters S-BPM : LCD, 40 × 50 mm, Display	A-BPM : OLED, 96 × 39 pixels, white characters
Clock	24 hour clock	
Measurement count	200 times or more. varies due to measurement conditions.	
Memory Data	600 data max	
Power supply	With the same type of batteries : 2 × 1.5V batteries (LR6 or AA size) Alkaline battery or Nickel-hydrogen battery (Ni-MH) 1900 mAh or more Backup battery for built-in clock : Lithium rechargeable coin cell battery ML2016	
Rated voltage	DC 2.4 V and DC 3.0 V	
Interface	USB : USB1.1 compliant. Cable length : 1.5 m or shorter Micro-USB B type terminal can connect to dedicated peripheral (using standard driver software). Bluetooth Ver.4.1 (BLE) : Wireless device can be connected. SDK available for Medical Developer	USB : USB1.1 compliant. Cable length : 1.5 m or shorter Micro-USB B type terminal can connect to dedicated peripheral (using standard driver software).
Operating conditions	Temperature : +10 to +40 °C Humidity : 30 to 85 %RH (no condensation)	
Atmospheric pressure both for operation and storage condition	700 to 1060 hPa	
External Dimensions	Approx. 95 (L) × 66 (W) × 24.5 (H) mm	
Weight	Approx. 135 g (excluding batteries)	Approx. 120 g (excluding batteries)



A&D Company, Ltd.

3-23-14 Higashi-Ikebukuro, Toshima-Ku, Tokyo, 170-0013, Japan
Tel: +81 3-5391-6132 Fax: +81 3-5391-1566
1-243, Asahi, Kitamoto-shi, Saitama, 364-8585 Japan
Tel: +81 485-93-1111 Fax: +81 485-93-1119
<http://www.aandd.jp>

A&D Engineering, Inc.

1756 Automation Parkway, San Jose, CA 95131, U.S.A.
Tel: +1 408-263-5333 Fax: +1 408-263-0119

A&D Instruments Ltd.

Unit 24/26 Blacklands Way, Abingdon Business Park,
Abingdon, Oxfordshire, OX14 1DY, United Kingdom
Tel: +44 1235-550420 Fax: +44 1235-550485

A&D Australasia Pty Ltd.

32 Dew Street, Thebarton, South Australia 5031, Australia
Tel: +61 8-8301-8100 Fax: +61 8-8352-7409

A&D Rus Co., Ltd.

Vereyskaya Str. 17, 121357, Moscow, Russia
Tel: +7 495-937-33-44 Fax: +7 495-937-55-66

A&D Technology Trading (Shanghai) Co., Ltd

32CD, World Plaza, No.855 South Pudong Road,
China (Shanghai) Pilot Free Trade Zone, 200120, CHINA
Tel: +86 21-33932340 Fax: +86 21-33932347

A&D Instruments India (P) Ltd.

509 Udyog Vihar Phase V Gurgaon-122 016, Haryana, India
Tel: +91 (124) 471-5555 Fax: +91 (124) 471-5599