

KARAN & ASSOCIATES, INC.

AVATAR LAB BENCH SYSTEM



**Avatar Lab Bench System
Conforms to UL STD 962**

Made in the USA



KARANANDASSOCIATES.COM • 909-401-2914 • 13181 SANTA ANA AVE. FONTANA, CA 92337



AVATAR LAB BENCH SYSTEM

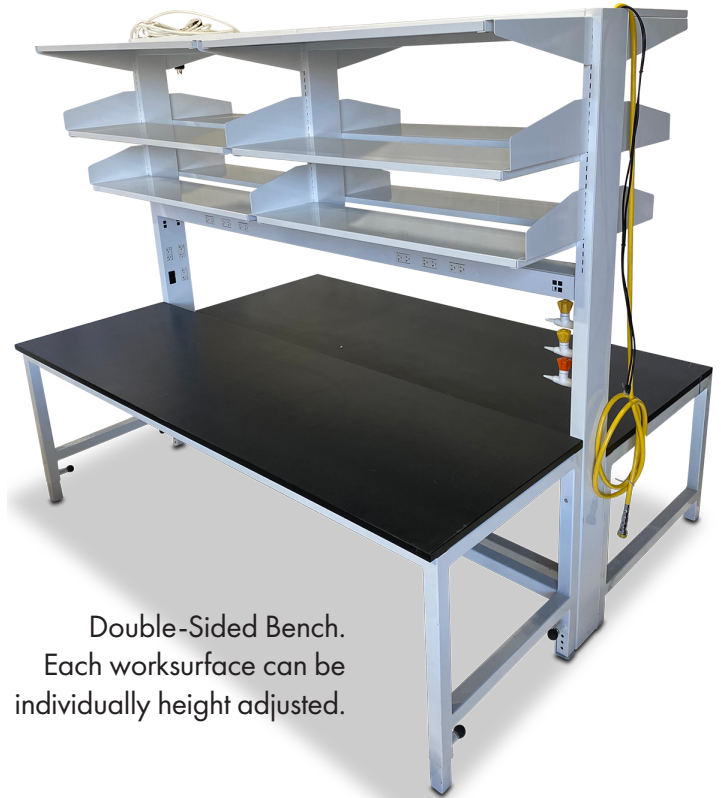
The Avatar Lab Bench System is a free standing, adjustable system designed to efficiently utilize available lab space. This system is available in both single-sided and double-sided versions. The shelves and countertops are height adjustable as required. Electrical, data and plumbing services are integrated into the system.

Table Frame

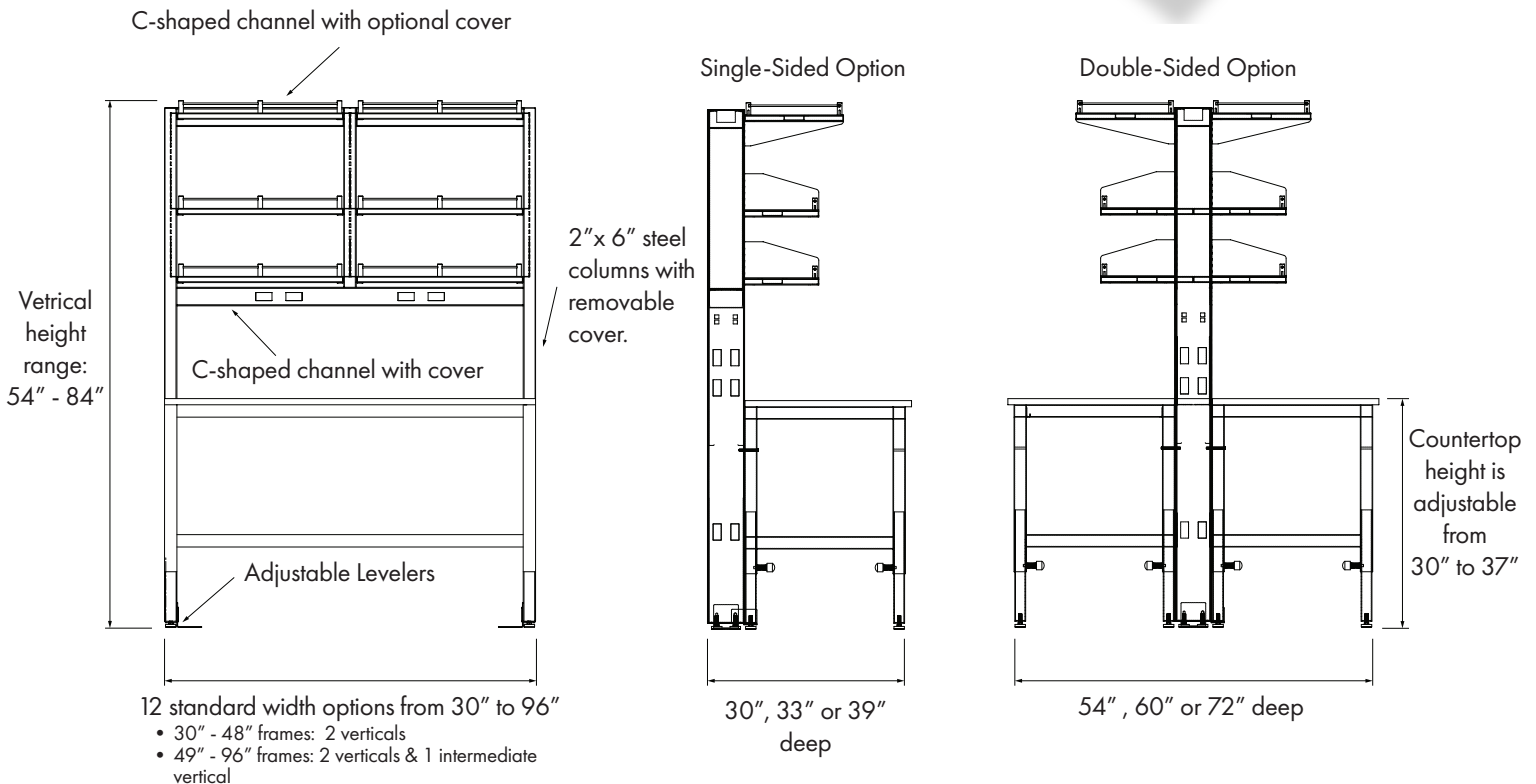
- **Table Frame:** All welded structure with smooth outer surface and clean finished look.
- **Table Legs:** Tables are 4-legged standalone table that is bolted on to the bench frame verticals.

Finish

- **Powder Coated:** Standard and custom color options available. Epoxy and Polyurethane chemical resistant powder coat finish applied on all our steel products.
- **Stainless steel:** Usually provided in T304 grade polished finish.



Double-Sided Bench.
Each worksurface can be individually height adjusted.

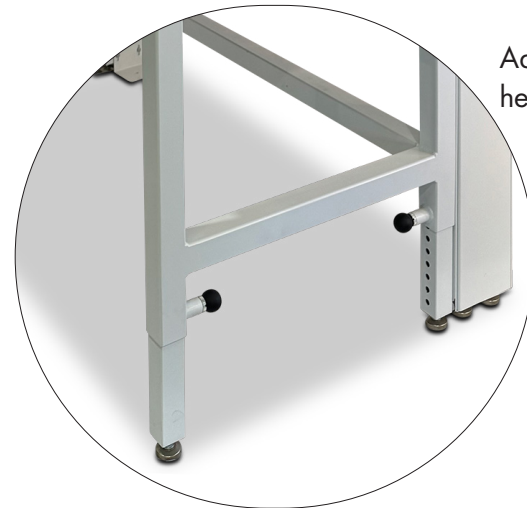




AVATAR LAB BENCH SYSTEM

Height Adjustment

- **Overall:** Various heights available for verticals. Range: 54" - 84"
- **Countertop height:** Work surface can be adjusted with spring loaded knobs in 1" increments. Range: 30" - 37"



Adjustable height legs

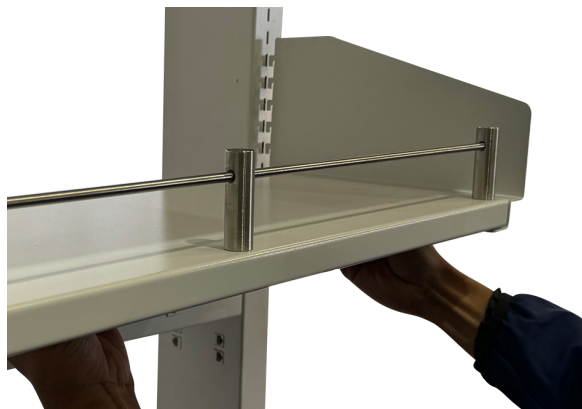
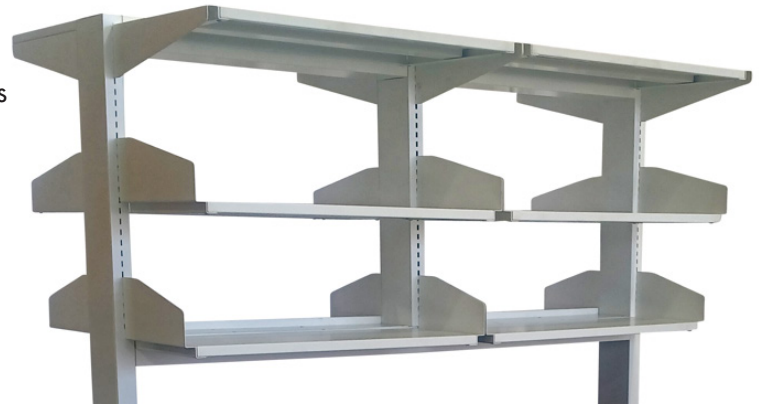
Footing

- **Levelers:** Each leg is fitted with adjustable levelers
- **Brackets:** Verticals can be anchored with seismic brackets



Shelves and Brackets

- **Shelves:** 16ga reinforced steel shelves with 1, 2 or 3 tiers as required. The shelves can be provided with lips at front and back or with seismic rods and turrets. The shelves can also be extended +3" in depth to meet in the middle of the verticals.



- **Brackets:** 14ga thick stepped inverted and bookend brackets to fit into the slots on bench verticals. The brackets are height adjustable in 1" increments.

Table Accessories

- **Cabinet Rails:** 14ga C-channels designed to accept hanging cabinets. The rails are welded in place for sturdier construction.
- **Cabinet Back Stop:** 14ga channel that can act as a back stop for optional mobile cabinets.
- **Modesty Panel:** 16ga panel that can be bolted or welded in
- **Monitor Arm:** Adjustable and tilting monitor arm can be provided for screens and monitors.
- **Task Light:** We can provide task lights and brackets to attach to shelves as required.





AVATAR LAB BENCH SYSTEM

Services

- **Electrical Receptacles:** No separate wire-mold mounted to the bench frame. Integrally installed at the lower horizontal channel and/or one vertical column. Two duplex receptacles above countertop and one below countertop can be located in the vertical column. The horizontal channel can accommodate 1-6 duplex receptacles depending on the width of the bench frame. Vertical columns and the horizontal channel have removable covers to provide easy access for maintenance. All receptacles are wired to 120V/20A circuits with 3-wire or 4-wire power cords that terminate with twist lock plugs. Available configurations are as follows:
 - L5-20P – Maximum of 2 twist locks on 2 circuits
 - L14-20P – Maximum of 2 twist locks on 4 circuits
- **Data Outlets:** Data outlets are provided on the vertical columns and/or the lower horizontal channel. Up to 12 data outlets can be provided with CAT 6A, CAT 6 or CAT 5E cords. Each outlet runs a separate cord to the ceiling service panel.



- **Service Fixture:** Air, Gas, Vacuum, and other services fixtures are provided inside one vertical column of the frame. Vertical columns have removable panels that provide easy access for maintenance. Quick disconnects and extension to ceiling service panel is provided. Watersaver Faucet Co. (wsflab.com) products are used.
- **Ceiling Service Panel:** 16ga panel with matching electrical receptacles and quick disconnect fittings are provided. Extra cutouts and holes for future use can be added as required.

Certification

The Avatar Lab Bench System is certified by ETL to conform with UL 962 standards.



Intertek
Conforms to
UL STD 962



AVATAR LAB BENCH SYSTEM

The Avatar Lab Bench System isn't just laboratory furniture; it's a flexible laboratory furniture solution. What sets it apart is the quick-connect fittings, ensuring effortless installation and adjustments. You'll also find a vast array of sizes, options, and configurations to meet your exact needs.

Concealed wires and hoses create a clean and organized aesthetic, enhancing the overall look and functionality.

The flexibility extends to its configurations. Whether you prefer a single-sided or double-sided setup, you have an incredible number of choices for countertop, shelving, services, and cabinets. This adaptability makes it perfect for both new projects and renovations.

The Avatar Lab Bench System is built to last. It will serve your laboratory for years to come, adapting to changing needs. It's a valuable investment that evolves with you.

Avatar Lab Bench with Mobile Cabinet



Avatar Lab Bench Single Side



The Avatar Lab Bench System is ETL certified, conforming to UL 962 standards. This certification is a seal of excellence, ensuring you receive a product that meets the highest industry standards.



Intertek
Conforms to
UL STD 962



KARAN & ASSOCIATES, INC.

HOW TO ORDER

You can request a quote or place an order by calling us at (909) 401-2914 or send us an email to sales@karanandassociates.com.

We at, Karan and Associates, Inc. are a full-service fabrication company specializing in machining, laser cutting, metal forming, and welding, as well as a variety of other metal fabrication processes.

We can customize anything. Any way you want it!

You have a particular need. We understand those needs and the value in meeting them. We offer reasonable lead times and affordable pricing.

Simply provide a description of what you are looking to order and we will provide you with an estimate and approximate lead time. If you're looking to build something from scratch, a drawing or spec sheet would be helpful; for custom sizes/finishes/configurations of existing products, a simple written description is all we need. If everything looks good on the quote, please sign and return the quote form to authorize production.

TRUSTED BY INDUSTRY LEADERS



Karan and Associates, Inc. is headquartered in the city of Fontana in San Bernardino County, the industrial center for steel manufacturing in Southern California.

We specialize in metal framing systems, strut items and accessories, laboratory benches and furniture, seismic rods and turrets, bookend brackets, compressed gas cylinder racks, restraints and cylinder transport pallets, as well as other architectural steel structures. We also offer custom laser metal cutting service.

We are an authorized distributor of Unistrut® products nationwide.

We are a minority-owned business certified by the National Minority Supplier Development Council.

Made in the USA



KARANANDASSOCIATES.COM • 909-401-2914 • 13181 SANTA ANA AVE. FONTANA, CA 92337

