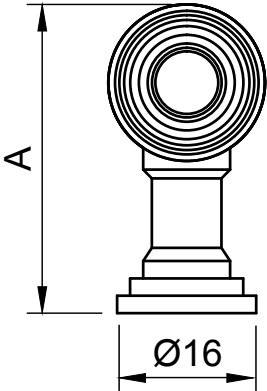
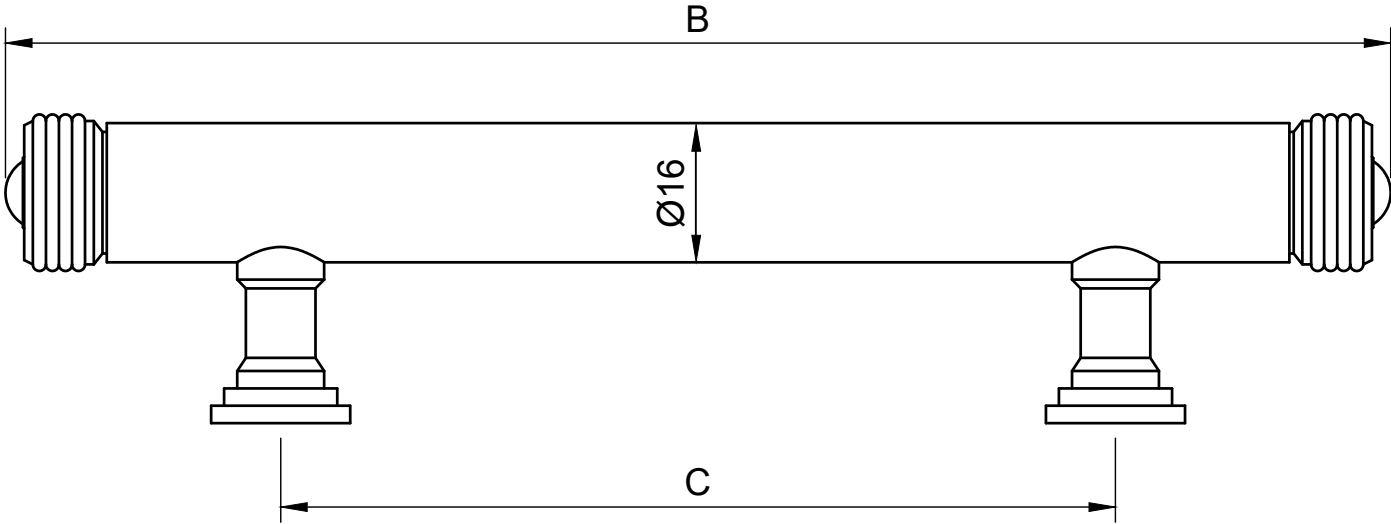


Thread Size
Cabinet Pull
M4



A	B	C
36mm	162mm	96mm
36mm	226mm	160mm
36mm	290mm	224mm
36mm	354mm	288mm

<div> <div>DANIEL OXFORD</div> <div>CABINETRY COLLECTION</div> </div>	Design Name
	Warwick Pull
	Version Number
IMPORTANT: This technical drawing is the private and confidential property of DANIEL OXFORD and must not be disclosed to third parties without DANIEL OXFORD written permission	