

USER MANUAL

Alb Filter[®] DUO

Kitchen faucet water filter



Blaufaktor GmbH & Co. KG
Riedweg 12
D-78607 Talheim



www.alb-filter.com
info@alb-filter.com

Thank you very much for purchasing our
Alb Filter® DUO

To ensure correct installation and efficient operation of the water filter, please follow the installation instructions below.

MEANING OF PICTOGRAMS

- ⚠ Increased attention required
- ℹ Additional information
- ✔ Note
- 🔧 Tool required
- 🛒 Purchase additionally

TABEL OF CONTENT

Preamble	4
Description	6
Scope of delivery	7
Components – Alb Filter® DUO	8
Please note before installation	10
Determine connection thread	10
Installation Alb Filter® DUO	12
Changing the filter cartridge	16
Maintenance and care	20
Filter cartridges for the Alb Filter® DUO	21
Cartridge replacement interval	21
Flow rates	22
Technical informations	23
General safety informations	24
FAQ - Frequently asked questions	26
Reminder to change the filter cartridge	28
Cartridge subscription service	29

PREAMBLE

Alb Filter® - a matter of heart.
We are pleased that you have chosen Alb filter.

Since 2001 we can look back on a great experience in the field of water treatment.

At a time when even the smallest part seems to come from the Far East, we at Alb Filter stand for quality from the centre of the Swabian Alb. A production site in southern Germany, which is characterized by the highest standards and precision in many areas.

We feel committed to our region and manufacture our products with our partners in the surrounding area.

A real piece of home - **Made in Germany.**



DESCRIPTION

The Alb Filter® DUO - a high quality water filter for installation directly on the tap.

Alb Filter® DUO is ideal for:

- Drinking water treatment
- Preparation of food (cooking water)
- Cleaning of food

The water filter is installed directly on the kitchen faucet. For this purpose the bypass is screwed to the standardized outlet (M22 AG/M24 IG) instead of the jet regulator.

By means of a practical switch lever, it is possible to choose between filtered and unfiltered water.

SCOPE OF DELIVERY

Note:

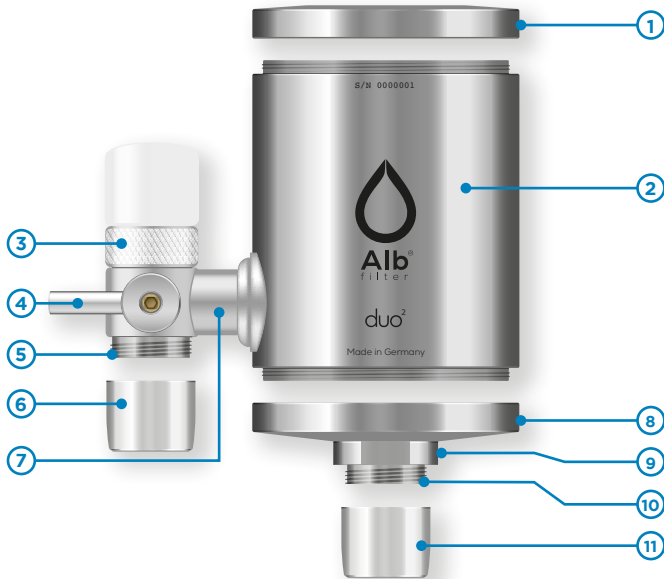
Please check that the delivery is complete before commissioning - it consists of

- **Alb Filter® DUO filter housing with aerator bypass and changeover function**
- **Alb Filter® Cartridge**

Further accessories as well as replacement filter cartridges, thread adapters and discount offers can be found at

www.alb-filter.com

COMPONENTS – ALB FILTER® DUO



1. Upper sealing cap with internal sealing ring
2. Filter body with external thread at the top and bottom
3. Threaded connection with union nut and head gasket for water filter fittings with standard connection M22 x 1 female thread
4. Switch lever: unfiltered water / filtered water
5. Jet regulator thread (external thread: M22 x 1)
6. Jet regulator with head gasket (unfiltered water)
7. Supply line bridge for filter housing with 4 mm allen hollow screw and sealing ring.
8. Lower sealing cap with internal sealing ring
9. Width across flats 24 mm for open-end wrench
10. Jet regulator thread (external thread: M22 x 1)
11. Jet regulator with head gasket (filtered water)

PLEASE NOTE BEFORE INSTALLATION

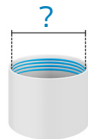
The Alb Filter® DUO has a standard M22 female thread, suitable for most taps with M22 male thread. If your faucet does not have a M22 external thread, you will need an adapter.

DETERMINE CONNECTION THREAD

Procedure for determining their connection thread:

1. Unscrew the aerator on your faucet. (If aerators are difficult to move, please use an appropriate key or a pipe wrench including a towel to protect the aerator)
2. Depending on the model, measure the **internal thread (IG)** or **external thread (AG)** of your aerator.
3. Compare the measured value with the corresponding table.

i Further information can be found on our website at:
<https://alb-filter.com/gewinde-ratgeber>



Internal thread (Ø in mm)	Required adapter
14,9 mm (M16 IG)	M22 AG → M16 IG
16,9 mm (M18 IG)	M22 AG → M18 IG
18,9 mm (M20 IG)	M22 AG → M20 IG
20,9 mm (M22 IG)	No adapter needed
22,9 mm (M24 IG)	M22 AG → M24 IG
26,9 mm (M28 IG)	M22 AG → M28 IG



External thread (Ø in mm)	Required adapter
15,8 mm (M16 AG)	M22 AG → M16 AG
16,3 mm (M16,5 AG)	M22 AG → M16,5 AG
17,8 mm (M18 AG)	M22 AG → M18 AG
18,3 mm (M18,5 AG)	M22 AG → M18,5 AG
19,8 mm (M20 AG)	M22 AG → M20 AG
20,8 mm (M21 AG)	M22 AG → M21 AG
21,3 mm (M21,5 AG)	M22 AG → M21,5 AG
21,8 mm (M22 AG)	M22 AG → M22 AG
23,8 mm (M24 AG)	M22 AG → M24 AG
27,8 mm (M28 AG)	M22 AG → M28 AG

INSTALLATION ALB FILTER® DUO

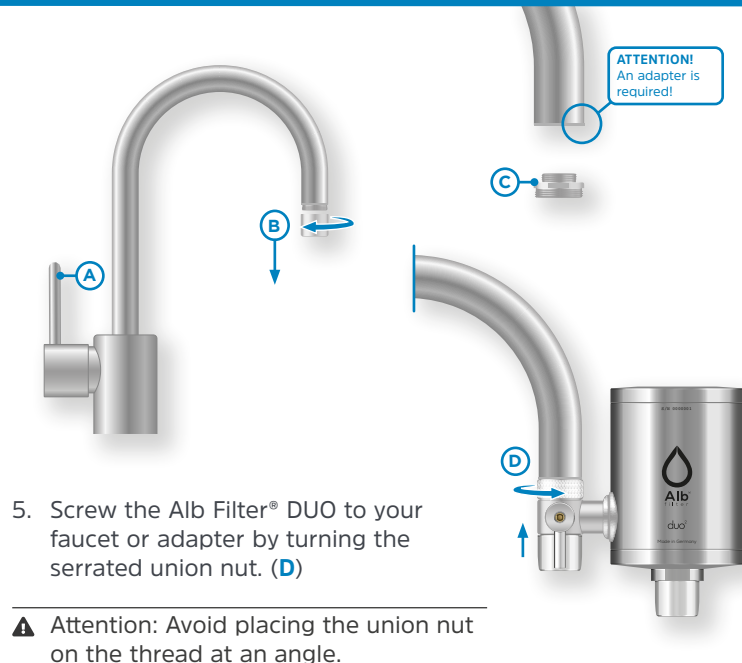
Procedure:

1. Make sure that your water tap is closed (A). Remove the Alb Filter® DUO from its packaging.

⚠ If the cartridge is not pre-installed, please follow the instructions for changing the cartridge on page 16.

2. Remove the aerator of your faucet using a suitable tool. (B)
3. Check the condition of the thread of your fitting and, if necessary, remove lime and other deposits.
4. If your armature does not have a standard M22 external thread, screw the previously determined thread adapter into your armature. (C)

i If you have any questions about the thread adapters, you can contact us using the contact details on our website.






-
- i** We recommend to mount the Alb Filter® DUO on the right side or aligned to the front to make the switchover function (filtered/unfiltered) easier to operate.
-


1. Check that the Alb Filter® DUO is correctly and firmly attached to your faucet. If necessary, use a pair of pliers with jaw protection to tighten the union slightly.
 2. Before opening the water inlet of your faucet, make sure that the switch lever is in vertical (downward) position. Mode: **Unfiltered**.
 3. Set the switch lever to horizontal position (Mode: **Filtered**) (E). Then slowly open the water inlet of your faucet. (F)
 4. Now let the water run through the water filter for 20 seconds to activate it. (G)
-
- i** Production-related activated carbon dust may dissolve during rinsing and slightly cloud the water during the cartridge activation process.
-
5. Check the water filter housing and all connected components for leaks. (H)
 6. The Alb Filter® DUO is now ready for use.

CHANGING THE FILTER CARTRIDGE

Procedure:

1. Close the inlet of your faucet.
2. Unscrew the lower cap of the Alb Filter® DUO from the filter body. (A)
3. Pull the cap downwards. The filter cartridge becomes visible. (B)

 Please use a 24 mm open-end wrench if the cover is tight. Use a cloth to avoid scratches.

 The filter cartridge sits in the lower sealing lid with the help of two O-rings (press fit).

4. Now pull the filter cartridge out of the lower cap with a slight turning movement. (C)
5. Press the new filter cartridge into the receptacle of the lower cap with slight turning movements. (D)



i If the filter cartridge is difficult to install, the sealing rings of the filter cartridge should be wetted with water or vaseline/milking grease (food safe).

6. Screw the lower cap back onto the filter body and tighten it hand-tight. A gap (1 mm) may be visible! **(E)**
7. Move the switch lever to the horizontal position (Mode: **Filtered**) **(F)**. Then slowly open the water inlet of your faucet.
8. Now let the water run through the water filter for 20 seconds to activate it. **(G)**

i Production-related activated carbon dust may dissolve during rinsing and slightly cloud the water during the cartridge activation process.

9. Check the water filter housing and all connected components for leaks. **(H)**
10. The Alb Filter® DUO is now ready for use.



MAINTENANCE AND CARE

The Alb Filter® DUO is generally low maintenance. However, the maximum service life of the filter cartridges must be observed.

Clean and lime-free fittings are the prerequisite for hygienically perfect drinking water.

To remove limescale, we recommend the use of a vinegar cleaner

Depending on the water quality, it may be necessary to remove any deposits that have formed inside the housing with a cloth (e.g. kitchen towel) every two months.

In case of calcareous water (>15°dH) and very frequent operation, the changeover valve in the changeover lever (6) may be damaged under certain circumstances. In this case the bypass can be replaced. (Available under the store category: Accessories)

FILTER CARTRIDGES FOR THE ALB FILTER® DUO

You can use different filter cartridges in the Alb Filter® DUO, including the filter types:



ACTIVE, ACTIVE PLUS+ and NANO

Further information on the respective filter cartridges can be found on our website at www.alb-filter.com as well as on the documents belonging to the filter cartridge.

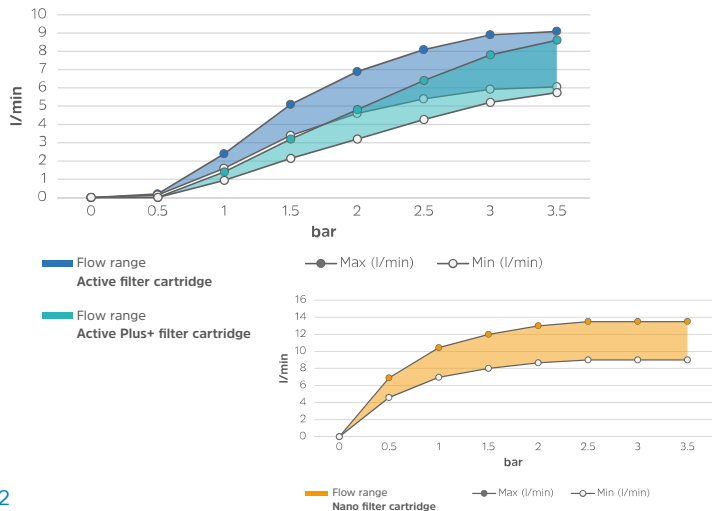
CARTRIDGE REPLACEMENT INTERVAL

We recommend changing the filter cartridges every four to six months (according to DIN 1988). They should also be replaced after longer periods of standing (> 6 weeks). Warranty claims are void if these instructions are not observed.

Please dispose of used filter cartridges in residual waste.

FLOW RATES

The diagrams show approximate values. The flow rate may vary slightly depending on the batch and installation situation. Values measured with new cartridges.



TECHNICAL INFORMATIONS

- **Design:** Filter housing for installation on (kitchen) faucets.
- **Material:** Stainless steel
- **Cartridge and capacity:** Depending on the selected version
- **Connection inlet faucet:** Standard connection for faucets with M22x1 outlet thread (female thread)
- **Outlet (filtered / unfiltered):**
Jet regulator with head gasket on M22 x 1 external thread
- **Flow rate:** approx. 5-11 liters per minute - depending on cartridge type (at approx. 2-3 bar water pressure)
- **Dimensions WxHxD:** 109 x 122 x 69 mm
- **Weight without cartridge:** approx. 450 g



GENERAL SAFETY INFORMATIONS

- No liability will be accepted for any damage caused by improper installation.
- Maximum operating temperature: 45 degrees.
- Protect from frost.
- Do not use on a faucet with a pull-out shower.
- The cartridge should be changed after 4-6 months. However, note the replacement interval of the cartridges used individually.
- Earlier replacement may be necessary if the water flow is visibly reduced, or if the water quality deteriorates.
- An early change is not a defect of the cartridge used, but an indication of increased occurrence of fine particles or pollutants in the unfiltered water.
- In exceptional cases, when the water in the supply line is very cold (for physical reasons) condensation water may form on the filter housing.
- To ensure complete safety with regard to the quality of your filtered water, a water test in a competent laboratory is mandatory.
- In connection with pressureless boilers, please note that due to the high fineness of the cartridge, a pressure is built up in front of it (approximately equal to the mains pressure), which is reduced only slowly. Under certain circumstances, this can lead

to damage to the non-pressure-resistant boiler. Please contact your responsible installer for this.

- No liability can be accepted for the consequences of using filter cartridges from other manufacturers. We strongly recommend the use of original Alb filter cartridges.
- Caution: In accordance with applicable regulations, never operate the water filter on the drinking water network without a system separator. Make sure that the connection of your domestic waterworks, on which the water filter is operated, is equipped with a system separator according to EN 12729 type BA. Water that has flowed through a system separator is no longer considered drinking water.
- Please observe the applicable drinking water regulations of your respective country before installation and commissioning.
- Use only with drinking water.

FAQ - FREQUENTLY ASKED QUESTIONS

Q What does the NANO cartridge filter?

A The NANO cartridge filters only germs and bacteria down to a size of 0.1 µm. This corresponds to 99.9999% (log6) of microorganisms harmful to humans.

Q Can activated carbon germinate?

A Yes. Please pay attention to the specified service life of the cartridges.

Q Does the activated carbon filter lime?

A No, the Alb Filter® is explicitly not a lime filter - it filters bound lime flakes, but not dissolved calcium carbonate.

Q When does the filter need to be changed?

A The ACTIVE and ACTIVE PLUS+ cartridges should be changed after 4 months at the latest, the NANO cartridge after 6 months - at a consumption of approx. 150 l/week. If the flow rate of the cartridge decreases prematurely, this may be due to poor input water quality.

Q What are signs that a filter change is necessary?

A NANO: The water flow is greatly reduced or no water is coming through at all.
ACTIVE, ACTIVE Plus+: The flow rate decreases only in rare cases. Therefore, it is important to change the cartridges at regular intervals, at the latest after 4 months or 3,000 l of water flow.

Q How high must the effective water pressure be to operate the filters?

A For a good flow, the pressure should at least 3 bar for all cartridges. With the NANO cartridge, 2,1 bar is already sufficient for a good flow.

REMINDER TO CHANGE THE FILTER CARTRIDGE

We would like to remind you to change your filter cartridge. Please use our practical Email reminder service:

www.alb-filter.com/reminder

Alternatively, make a note of the time of startup in this table. Observe the information on the cartridge change interval on page 21.

Start	End	Note

 Replacement cartridges available at **www.alb-filter.com** – Shop category: Filter Cartridges

CARTRIDGE SUBSCRIPTION SERVICE

Protects the environment and your wallet! With our cartridge abonnement, the replacement cartridge is guaranteed to be delivered to you on time.

To set up the cartridge abonnement, go to **www.alb-filter.com** under **Shop - Replacement cartridges.**

Select the filter cartridge, go to „Purchase options“ and click on „Save subscription“.

Place the cartridge abonnement in the shopping cart and complete the order.



▶ USER MANUAL ONLINE



<https://alb-filter.com/pages/installation-wasserhahnfilter?lang=en>

© 2023
Blaufaktor GmbH & Co. KG
Riedweg 12
78607 Talheim
Germany
www.alb-filter.com
info@alb-filter.com

All rights reserved. No part of this manual may be reproduced in any form or copied or processed by any electronic, mechanical or chemical means without the written permission of the publisher.

It is possible that this manual still contains typographical defects or printing errors. However, the information in this manual will be checked regularly and corrections will be made in the next edition. We accept no liability for errors of a technical or printing nature and their consequences.

All trademarks and industrial property rights are acknowledged. Changes in the sense of technical progress can be made without prior notice. Illustrations and diagrams are not binding. All brand and product names used are only to illustrate the compatibility of our products with certain products of various other manufacturers and are the property of the respective owner.

DUO V1.4 Stainless Steel ENG (09/2023)

