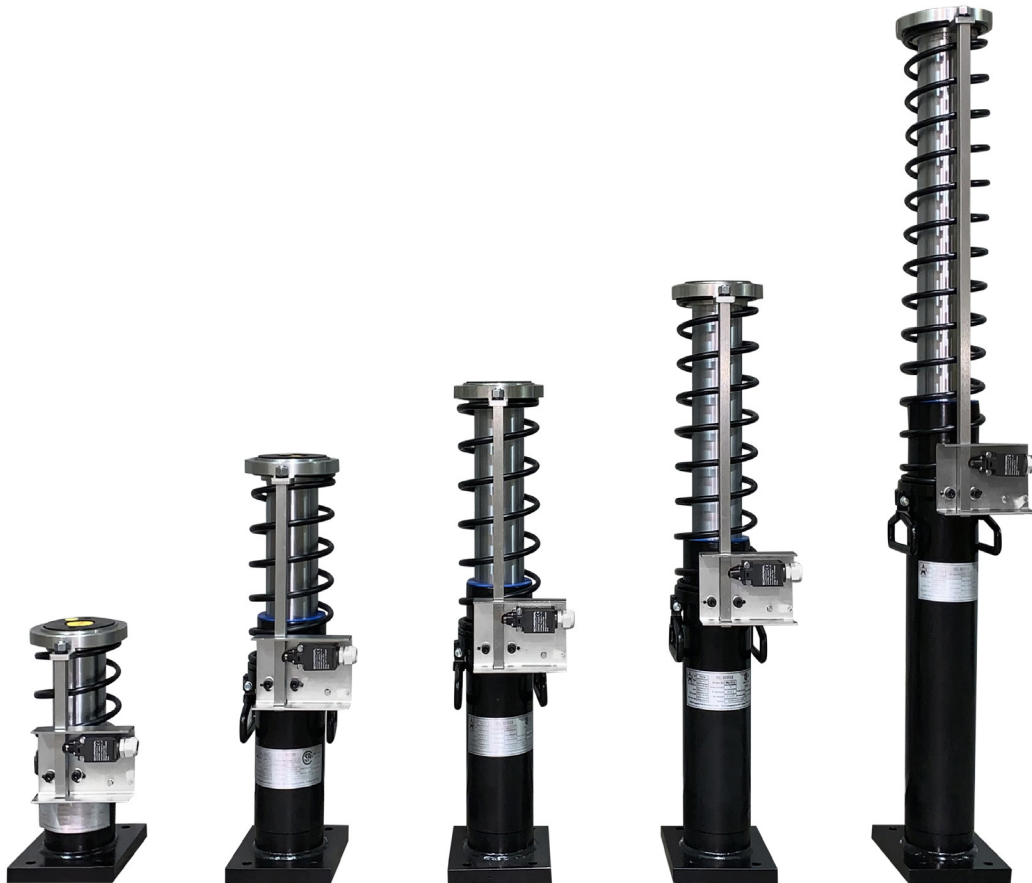


# OIL BUFFERS

Low and Medium Speed (200-500 fpm)



For elevator repair, modernization or new builds, Delco's oil buffers are designed and made for both elevator cars and counterweights.

They come with limit switches and rope detectors that meet CSA, A17.1 code and have California approvals.

Delco oil buffers are totally sealed, leak free, easy to install and require minimal maintenance.

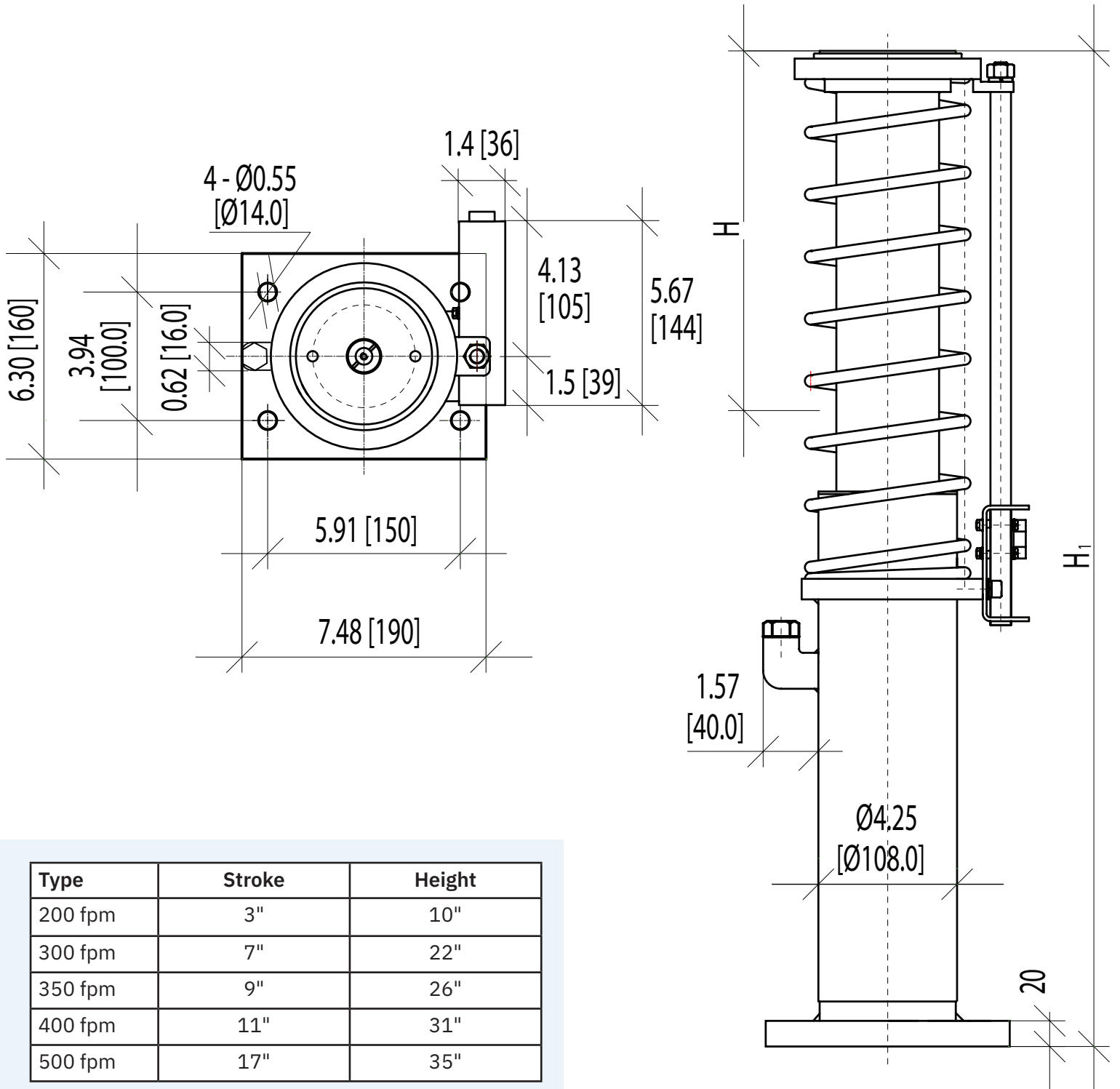
- 200 fpm
- 300 fpm
- 350 fpm
- 400 fpm
- 500 fpm

## Oil Buffers Specifications

Max Speed	200 fpm	300 fpm	350 fpm	400 fpm	500 fpm
Stroke	3"	7"	9"	11"	17"
Overall Height	10"	22"	26"	31"	44"
Comp Height	7"	15"	17"	19"	27"
Min Load (lbs)	1,300	1,300	1,300	1,300	1,300
Max Load (lbs)	5,500	10,000	10,000	10,000	10,000
Ship Wt (lbs)	35	65	75	85	115
Delco SKU	C-11-1200	C-11-1300	C-11-1350	C-11-1400	C-11-1500

# OIL BUFFERS

Diagram for Low and Medium Speed (200-500 fpm)



Type	Stroke	Height
200 fpm	3"	10"
300 fpm	7"	22"
350 fpm	9"	26"
400 fpm	11"	31"
500 fpm	17"	35"

# OIL BUFFERS

High Speed (600-1000 fpm)

Delco's high speed oil buffers are suitable for speeds ranging from 600-1000 fpm.

They are designed and made for both elevator cars and counterweights.

These high speed oil buffers meet CSA, A17.1 code and have California approvals.

Delco oil buffers are totally sealed, leak free, easy to install and require minimal maintenance.

Available in the following speeds:

- 600 fpm
- 700 fpm
- 800 fpm
- 1000 fpm

High speed oil buffers are a special order item. Please call us for lead times.

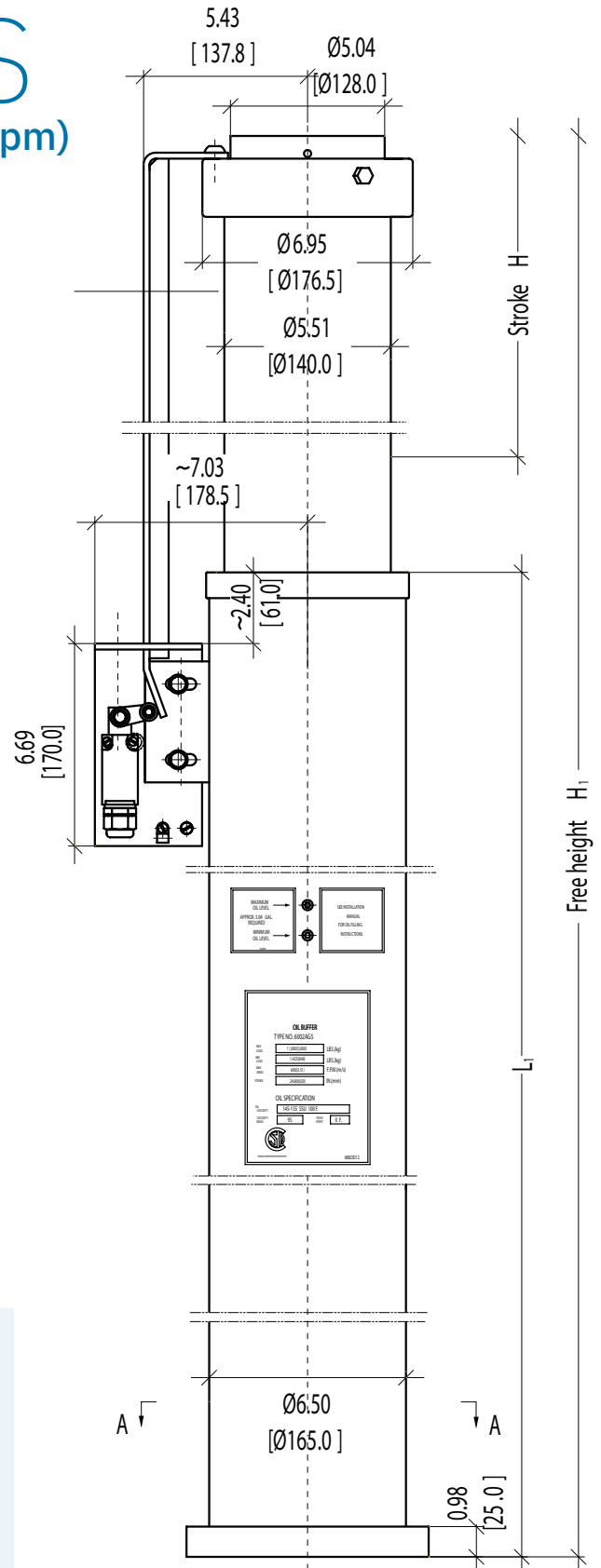
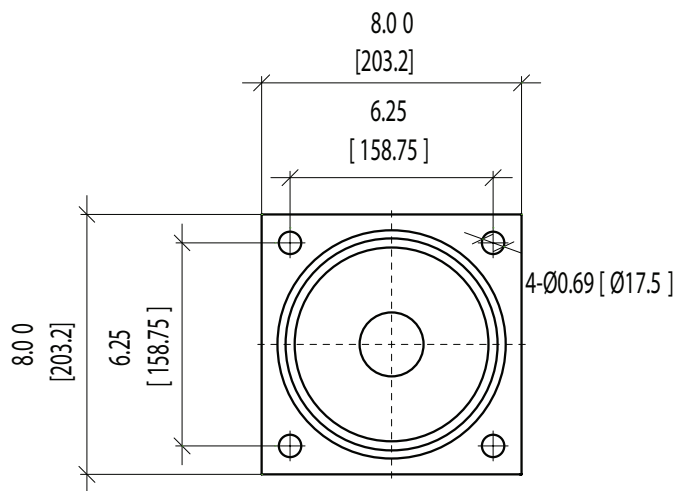


## High Speed Oil Buffers Specifications

Max Speed	600 fpm	700 fpm	800 fpm	1000 fpm
Stroke	25"	33"	44"	69"
Overall Height	66.75"	88.75"	114.5"	174.75"
Comp Height	42"	55.5"	70.75"	106.25"
Min Load (lbs)	1,400	1,400	1,400	1,400
Max Load (lbs)	11,000	11,000	11,000	11,000
Ship Wt (lbs)	243	309	370	534
Delco SKU	C-11-1600	C-11-1700	C-11-1800	C-11-11000

# OIL BUFFERS

Diagram for High Speed (600- 1000 fpm)



Type	Stroke	Height
600 fpm	25"	66.75"
700 fpm	33"	88.75"
800 fpm	44"	114.5"
1000 fpm	69"	174.75"