

SAFETY BARRIERS

For elevator and escalator maintenance

Foldable, durable, portable and extremely lightweight, technicians can easily carry Delco Barricades over a shoulder. Available 42" or 84" tall, with your choice of style and configuration.

- Light weight
- Durable
- Folding
- Expandable
- Indoor/Outdoor
- Easy to transport
- Easy to carry
- High visibility
- Code compliant



MODEL 42 SLIM (OPEN)



MODEL 42 BLACK PVC



MODEL 84 TALL



MODEL 42-STAINLESS



MODEL 42 WIDE

MODEL 42 SLIM

Durable, portable and lightweight, the Model 42-Slim is the model of choice for those who are looking for a safety barricade that takes up little space in a van, is easy to carry and is cost effective.

42-Slim Specifications

- Panel size: 42" tall x 18.5" wide (107cm x 47cm wide)
- Frame Material: 1" PVC piping with reinforced corners and t-stops
- Frame Color: Black
- Material: Oxford heavy duty indoor/outdoor canvas
- Standard Symbol: Do Not Enter
- Customization Available: Yes
- Code Compliant: Yes

Delco Part #C-10-0001



42-Slim Configurations

| | Standard (4 panels) | Double (8 panels) |
|--------|---------------------|-------------------|
| | | |
| Height | 42" (107 cm) | 42" (107 cm) |
| Width | 74" (188 cm) | 148" (296 cm) |
| Weight | 7 lbs (3.15 kg) | 14 lbs (6.3 kg) |
| Part # | C-10-0014 | |

MODEL 42 BLACK

The Model 42 Black is a highly visible, portable safety barrier constructed with a black, heavy duty PVC frame and high quality canvas. These lightweight and foldable barriers are easy to transport and quick to fold up.

42-Black Specifications

- Panels size: 42" tall x 23" wide (107cm x 58cm wide)
- Frame Material: 1" PVC piping with reinforced corners and t-stops
- Frame Color: Black
- Material: Oxford heavy duty indoor/outdoor canvas
- Standard Symbol: Do Not Enter
- Customization Available: Yes
- Code Compliant: Yes

Delco Part #C-10-0011



42-Black Configurations

| | Standard (3 panels) | Double (6 panels) |
|--------|---------------------|------------------------|
| | | |
| Height | 42" (107 cm) | 42" (107 cm) |
| Width | 69" (175 cm) | 11'5" or 138" (350 cm) |
| Weight | 6 lbs. (2.65 kg) | 12 lbs. (5.3 kg) |
| Part # | C-10-0011 | |

MODEL 42 STAINLESS

Our most popular model, this surprisingly lightweight stainless steel barricade provides a sturdy safety barrier with a professional and definitive look. Highly visible, it is constructed with 1" stainless steel pipe frame.



42-Stainless Specifications

- Panel size: 42" tall x 23" wide (107cm x 58cm wide)
- Frame Material: 1" stainless steel piping with reinforced corners and t-stops
- Frame Color: Silver
- Material: Oxford heavy duty indoor/outdoor canvas
- Standard Symbol: Do Not Enter
- Customization Available: Yes
- Code Compliant: yes

Delco Part #C-10-0012



42-Stainless Configurations

| | Standard (3 panels) | Double (6 panels) |
|--------|---------------------|------------------------|
| | | |
| Height | 42" (107 cm) | 42" (107 cm) |
| Width | 69" (175 cm) | 11'5" or 138" (350 cm) |
| Weight | 7 lbs. (3 kg) | 14 lbs. (6 kg) |
| Part # | C-10-0012 | |

MODEL 84 TALL



At the full height of 7' these barricades provide complete coverage for an elevator opening.

Quality, stainless steel barricades provide a functional and classy safety barrier for a professional and definitive look.



84 Tall Specifications

- Panels size: 84" tall x 23" wide (107cm x 58cm wide)
- Frame Material: 1" stainless steel piping with reinforced corners and t-stops
- Frame Color: Silver
- Material: Oxford heavy duty indoor/outdoor canvas
- Standard Symbol: CAUTION Maintenance in Progress
- Customization Available: Yes
- Code Compliant: Yes

Delco Part #C-10-0013

84 Tall Configurations

| | Standard (3 panels) | Double (6 panels) |
|--------|---------------------|------------------------|
| | | |
| Height | 84" (214 cm) | 84" (214 cm) |
| Width | 69" (175 cm) | 11'5" or 138" (350 cm) |
| Weight | 10 lbs. (4.5 kg) | 20 lbs. (9 kg) |
| Part # | C-10-0013 | |

MODEL 42 WIDE

Extra wide, this model is perfect for escalator applications. A standard 3-panel configuration is 12' wide and can be extended. Sturdy with a professional look, these barricades are constructed with 1" stainless pipe frames. Surprisingly lightweight, at only 11 lbs, they are foldable, easy to transport and quick to fold up. Customize by adding your logo to the center panel.

42-Wide Specifications

- Panel size: 42" tall x 48" wide (107cm x 122cm wide)
- Frame Material: 1" stainless steel piping with reinforced corners and t-stops
- Frame Color: Silver
- Material: Oxford heavy duty indoor/outdoor canvas
- Standard Symbol: Do Not Enter
- Customization Available: Yes
- Code Compliant: yes
- Extendable: yes

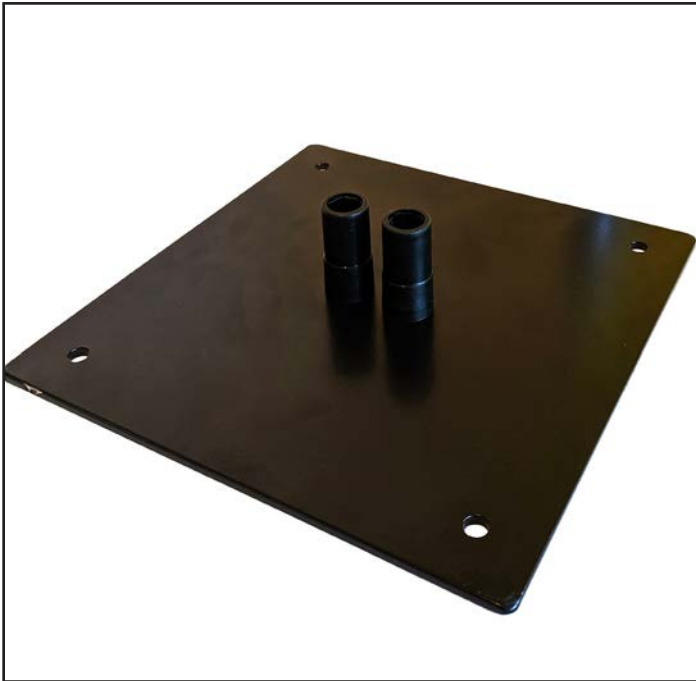
Delco Part #C-10-0015



42-Wide Configurations

| | Standard (3 panels) |
|--------|---------------------|
| | |
| Height | 42" (107 cm) |
| Width | 144" (366 cm) |
| Weight | 11 lbs. (5 kg) |
| Part # | C-10-0015 |

ACCESSORIES



Heavy Feet

- The heavy feet will weight down the barricade for situations in which additional, increased stabilization may be required
- Simply place the barricade legs into the receptors
- Each set of 3 panels requires 4 metal feet
- Double sets require 7 metal feet
- Weight: 4lbs (1.8 kg) each

Delco item #C-10-0100

Security Clamp

- For applications that require attachments and clamping in public spaces
- The security clamp is adjustable up to 4" (10cm).

Delco item #C-10-0101

