



i-mop[®] XL Plus

Auto scrubber for hard floor surfaces

User manual

Model part No.: 1251236

Powered by



Tel: 1-800-553-8033



For parts manual and other
language operator manuals, visit:

www.tennantco.com/manuals



Date: 11/11/2021

Version: v.1.06



Original user manual, written in the English Language

Tennant Company

10400 Clean Street, Eden, Prairie, MN 55344-2650

Telephone: (800) 553-8033

Internet: www.tennantco.com

Model: i-mop XL Plus

Product code: 1251236



Preface

Thank you for choosing the i-mop® XL Plus, the auto scrubber that cleans faster, cleaner, safer, greener, and is better for everyone. The i-mop XL Plus's compact design allows you to clean right to the edge and under obstacles, minimizing manual scrubbing. The battery operated i-mop XL Plus is equipped with two counter-rotating brushes that provide a deep scrub and a great cleaning result. The i-mop XL Plus significantly reduces the amount of water and chemicals needed which both leads to a greener result and reduces the risk of slippery floors.

Please read this manual carefully for important information and operating instructions before using the i-mop XL Plus. Save this manual for future reference. This i-mop XL Plus will provide excellent performance. The best results will be obtained when the i-mop XL Plus is:

- Regularly maintained per the i-mop XL Plus preventive maintenance instructions in this manual.
- Operated with reasonable care and caution.
- Maintained with manufacturer-supplied parts.

When this manual refers to “the manufacturer”, this means **Future Cleaning Technologies B.V.**, an affiliate company of i-team in Eindhoven, the Netherlands. When this manual mentions “the partner”, this refers to your local i-team resell and support service partner.

Purpose of the user manual

The purpose of the user manual is to provide the user with information in such a way that during the life of the i-mop XL Plus the machine is used correctly, efficiently and safely.

The user manual contains instructions regarding:

- Personal operator safety
- Intended and non-intended use of the i-mop XL Plus
- Instructions for daily use
- Maintenance instructions
- Storage conditions
- Disposal of the i-mop XL Plus

These instructions must be considered to avoid risks that could lead to physical and/or material damage.

Target audience

This user manual is intended for operators of the i-mop XL Plus and their supervisors, as well as partners and importers










Operators of the i-mop[®] XL Plus

The i-mop XL Plus may only be operated by a person who has correctly read and understood the instructions in this manual or is trained by an experienced operator who has read and understood the instructions in this manual.



Reading guide

The following symbols and terms are used throughout this manual to alert the reader to safety issues and important information:

Symbol	Term	Explanation
	WARNING	Indicates a hazardous situation which, if the safety instructions are not followed, can lead to injuries of the operator or bystanders and light or moderate damage to the product or the environment.
	CAUTION	Indicates a hazardous situation which, if the safety instructions are not followed, can lead to light and / or moderate damage to the product or the environment.
	ATTENTION	Indicates a liability situation, where the manufacturer or its partners and affiliates cannot be held accountable for damages caused by non-compliance.
	STRONG MAGNET	Indicates the machine contains strong magnets. These can cause pacemakers to stop working or cause electronic data to be damaged, such as information stored on access passes.
	PACEMAKER	Indicates operators and maintenance crew wearing pacemakers should keep a minimal distance of 6 in /15 cm. In this specific case operators may not use the machine as a backpack.
	BATTERIES	Indicates a battery-operated machine, batteries must be charged according to the instructions in the separate class I battery charger user manual. Batteries must be disposed of according to your local laws and regulations.
	SLIPPERY SURFACE	Indicates the machine can cause floors to become slippery. In the workplace, it is advised to place slippery surface signs in these areas.



Contents

Preface.....	3
Purpose of the user manual.....	3
Target audience	3
Operators of the i-mop® XL Plus.....	4
Reading guide.....	5
1. Introduction.....	8
1.1. Intended use of the product.....	8
1.2. Non-intended use of the product	9
1.3. Lifespan	9
1.4. Modifications	9
1.5. Specifications	10
1.6. Warranty.....	11
1.7. Identification	11
2. Description.....	12
3. Safety.....	13
3.1. General safety instructions	13
3.1.1. Sweep before scrub.....	13
3.1.2. Brush condition	13
3.1.3. Machine orientation	13
3.1.4. Strong magnets.....	13
3.1.5. Batteries.....	13
3.2. Risks during operation	14
3.2.1. Dress safely	14
3.2.2. Mark the job site.....	14
3.2.3. Careful when parking.....	14
3.3. Risks after operation.....	14
3.3.1. Remove battery packs	14
3.3.2. Machine orientation	14
4. Transport and storage.....	15
4.1. General	15
4.2. Park position	15
4.3. Transport outside.....	16
4.4. Transport in a vehicle	17
5. Assembly and installation	18
5.1. Unboxing.....	18
5.2. Assembly	19



5.2.1.	Charge the batteries.....	19
5.2.2.	Attach the brushes.....	19
5.2.3.	Attach the squeegee.....	20
5.2.4.	Install recovery tank.....	20
5.2.5.	Install cleaning solution tank.....	21
6.	Operation.....	22
6.1.	Before you start.....	22
6.1.1.	Insert the batteries.....	22
6.1.2.	Fill the cleaning solution tank.....	23
6.2.	Operation procedure.....	23
6.2.1.	Walking to the job site.....	23
6.2.2.	At the job site.....	24
6.2.3.	ECO mode.....	26
6.2.4.	Angle warning indicator.....	27
6.2.5.	Turn off the i-mop® XL Plus.....	27
6.2.6.	Emptying tanks.....	28
6.3.	Cleaning and storage.....	28
6.3.1.	Flush the system.....	28
6.3.2.	Cleaning the tanks.....	28
6.3.3.	Removing battery packs.....	29
6.3.4.	Check the brushes and squeegee.....	29
6.3.5.	Store in an upright position.....	29
6.3.6.	Cleaning the particle filter.....	30
7.	Maintenance.....	31
7.1.	Brush replacement.....	31
7.2.	Squeegee replacement.....	32
7.2.1.	Detach the squeegee.....	32
7.2.2.	Flip/replace the squeegee blade.....	32
7.2.3.	Attach the squeegee.....	33
7.3.	Replace vacuum hose.....	33
7.4.	Cleaning the recovery tank and the ball float shutoff assembly.....	34
7.5.	Recommended additional cleaning.....	37
7.6.	Recommended service time.....	38
7.7.	Accessories.....	38
8.	Troubleshooting.....	39
9.	Decommissioning and disposal.....	40
10.	Attachments.....	41
10.1.	Parts.....	41
10.2.	i-mop® Plus Automatic Shutoff Systems.....	42



1. Introduction

The i-mop® XL Plus is an easy and safe machine to use. This manual helps you to get started and explains the operation and maintenance procedure. You will be pleasantly surprised by the fast and effective use of the battery operated i-mop XL Plus. The batteries used in the i-mop XL Plus are the same as a variety of battery powered i-team products. The batteries must be fully charged before use. Please refer to the user manual of the class I battery charger for correct procedure.

This manual is intended for those who work with the i-mop XL Plus and/or perform daily maintenance. The manual must be read in full before the first actions. This manual describes the correct method of use, safety measures, maintenance and transport.

The manufacturer continuously improves all their products based on user experience and feedback. Any deviations between the texts and/or images from the manual and your i-mop XL Plus can therefore arise from the difference in model or from possible changes due to continuous development and innovation.

1.1. Intended use of the product

The i-mop XL Plus is a specialized machine for scrubbing indoor hard floor surfaces. You can use the i-mop with water-based detergents that have been rated for use within general floor scrubbers.

The fluid tank cap and brushes come in various color coded versions (blue, green, or red). Both items are easily replaced. This allows you to use different cleaning solutions. For instance, when you move from the food preparing area to the restaurant.

ALWAYS use the same color for fluid tank and brushes.



Figure 1



1.2. Non-intended use of the product



WARNING

Non-intended use can have consequences for the safety of operators and bystanders and will void the warranty on the product.

NEVER operate the i-mop® XL Plus near flammable dusts, liquids or vapors.

NEVER operate the i-mop XL Plus when flammable or poisonous liquids like gasoline, oil, acids, or other volatile substances are on the floor.

DO NOT fill the i-mop XL Plus with any flammable detergent. **ONLY** use the water-based cleaning solutions.

DO NOT use water that exceeds 113° F/45° C. Using water above this temperature will void the tank warranty.

DO NOT use cleaning solutions with pH below 2 or above 11 in order to prevent damage to sensitive components.

DO NOT use the i-mop XL Plus outdoors or on uneven surfaces.

DO NOT operate this i-mop XL Plus over electrical floor outlets in order to avoid electrical shock.

NO RIDERS! Do not carry passengers on top of the i-mop XL Plus.

DO NOT use the i-mop XL Plus as stepladder or platform.

DO NOT store the i-mop XL Plus outside in order to avoid damage to electronic components.

ONLY use manufacturer-supplied parts for maintenance.

KEEP AWAY from vulnerable people, including children ! The i-mop XL Plus is a professional cleaning machine to be used by trained adults only.

1.3. Lifespan

Each i-mop XL Plus is guaranteed to operate for at least 2000 hours. The wear on brushes and squeegee heavily depends on the roughness of the surface. They need to be checked regularly.



CAUTION

To ensure proper and safe operation throughout the life of the i-mop XL Plus, the machine must be checked every 500 hours by an authorized i-mop service partner.

1.4. Modifications

It is not permitted to make modifications to the design of the i-mop XL Plus without consultation and permission from the manufacturer. This affects the warranty, refer to section 1.6 of this manual.



1.5. Specifications

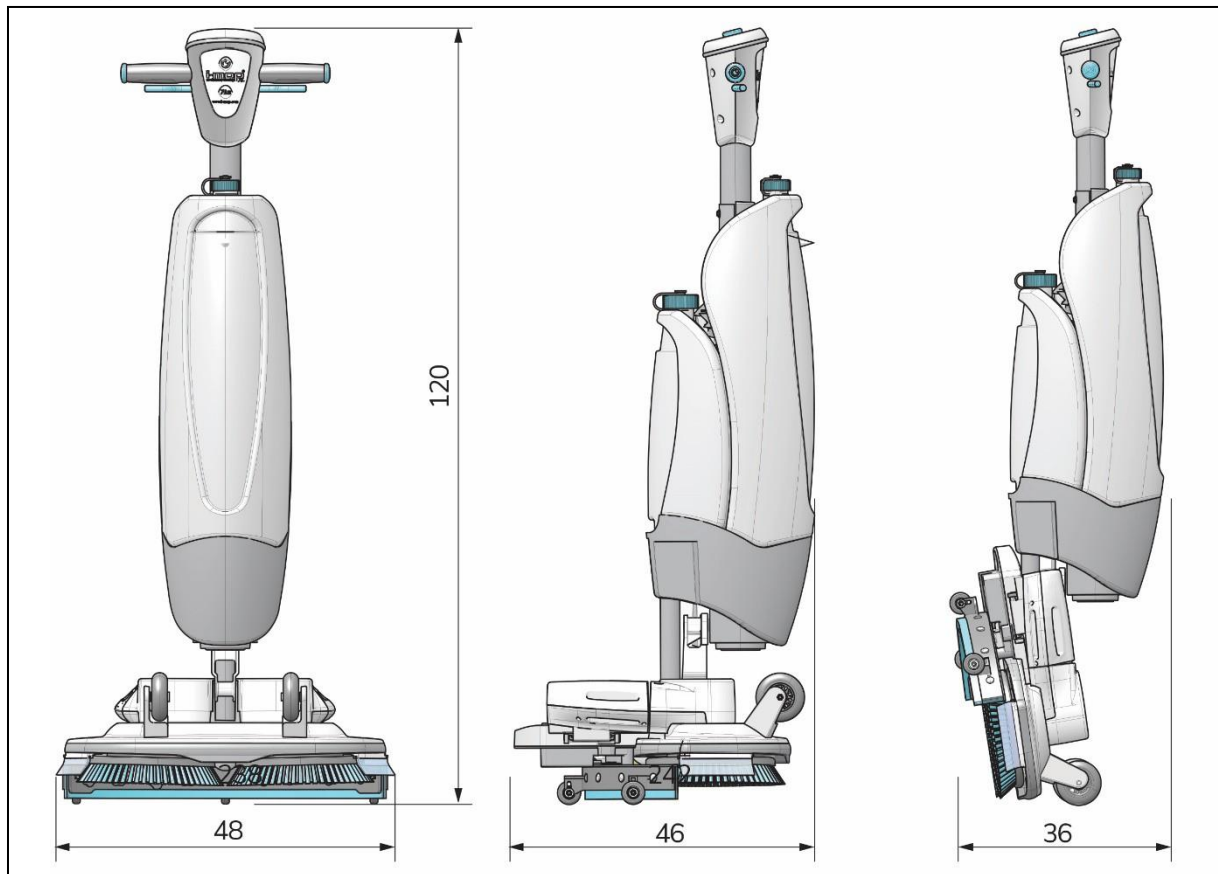


Figure 2

Product size:	120 x 48 x 46 cm 47.25" x 19" x 18"
Product size in park position:	120 x 48 x 36 cm 47.25" x 19" x 14"
Weight (including batteries):	22.5 kg 49.6 lbs
Li-on battery:	DC (25.2V, 9Ah, 222Wh)
Battery capacity:	2 batteries
Operation time of batteries:	60 min
Brush pressure:	31.5 gr / cm ² 0.45 psi
Brush speed:	350 RPM
Detergent tank capacity:	4 L 1.05 gallons
Recovery tank capacity:	6 L / 4 L recommended max 1.5 / 1.05 gal.
Vibration:	Amplitude (mm): <0.4442 Velocity (m/s): <0.008 Acceleration (m/s ²): 0.943
Noise level (1m):	79.6 Db
Theoretical performance:	Up to 1800 m ² per hour 19,375 sq. ft.
Practical performance:	1000 - 1300 m ² per hour 10,764 - 13,993 sq. ft.
Castor wheels:	YES
Power cut off at park position:	YES



Angle power cut off:	YES < 32°
Floating ball for recovery tank:	YES
Timer:	NO

1.6. Warranty

The i-mop® XL Plus should be used as intended and described in this manual. Using the i-mop XL Plus outside will void the warranty on the product.

1.7. Identification

The ID tag (figure 3), containing the serial number, can be found on the bottom of the i- mop scrub deck, between the two brushes.



Figure 3



2. Description

The compact i-mop® XL Plus consists of two main parts:

- The body that contains the motor, cleaning solution tank, recovery tanks, handle with triggers and control panel.
- The scrub deck that contains the brushes and squeegee.

The i-mop XL Plus can be folded into a park position; this is recommended for storage.

The i-mop XL Plus consists of:

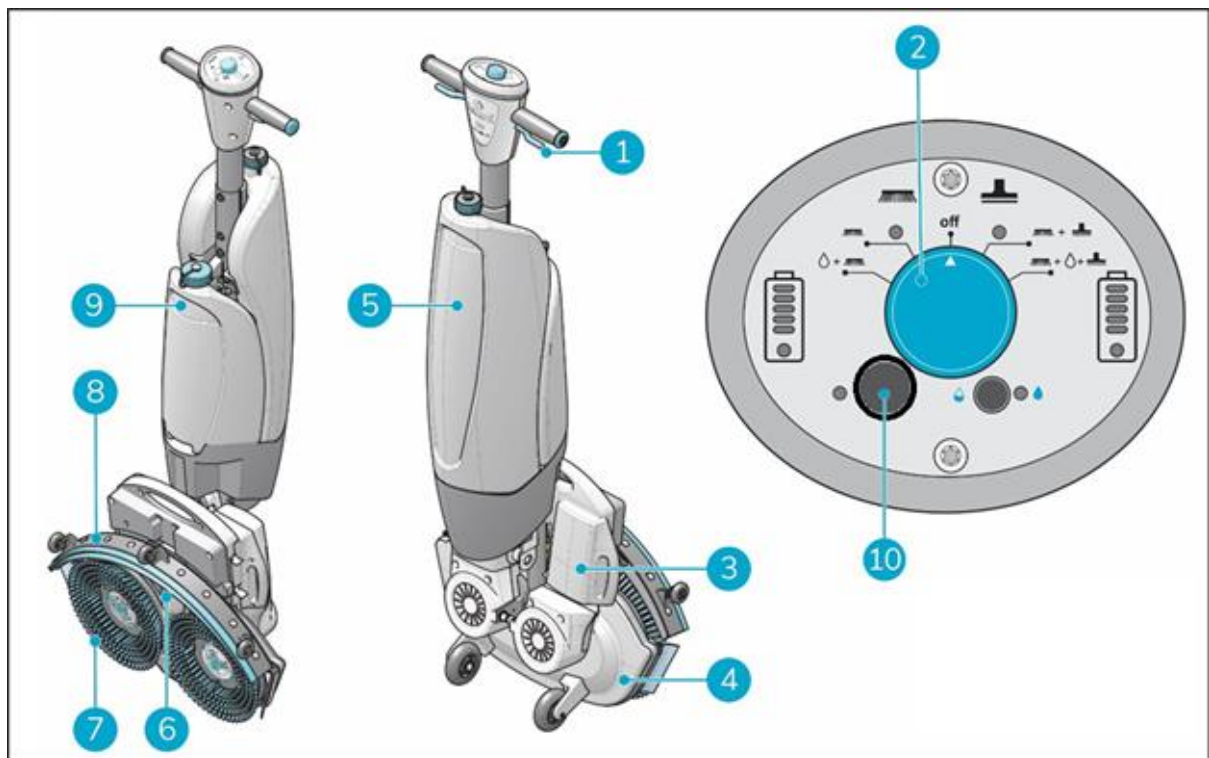


Figure 4

Legend

- | | |
|------------------|---------------------|
| 1. Trigger | 6. Vacuum hose |
| 2. Control panel | 7. Rotating brushes |
| 3. Batteries | 8. Squeegee |
| 4. Scrub deck | 9. Solution tank |
| 5. Recovery tank | 10. Rubber cap |



3. Safety

Safety comes first. Therefore, please take your time to read and understand these safety instructions. Improper use can cause harm or void the manufacturer's warranty.

3.1. General safety instructions

3.1.1. Sweep before scrub

Remove objects from the floor that can be propelled by or getting caught in the rotating brushes.

3.1.2. Brush condition

Make sure to check the condition of the brush before use. Change the brush only when the machine is turned off in a park position.

3.1.3. Machine orientation

Always keep the body of the i-mop® XL Plus in an upright position when cleaning fluid or batteries are inserted.

3.1.4. Strong magnets



CAUTION

Please be aware of the integrated magnets that hold the fluid tanks in place.



WARNING

Operators and maintenance crew wearing pacemakers should keep a minimal distance of 6 in/15 cm.

3.1.5. Batteries

Always use the automatic battery charger provided by the manufacturer.

CAUTION

During normal operation, the 24V batteries cause no safety hazard on their own. Please keep the following safety instructions regarding the batteries in mind:



- Do not crush, pierce or damage in any way.
- Do not heat or incinerate.
- Do not short circuit.
- Do not dismantle.
- Keep dry.
- Only charge between 5° C~40° C / 41° F~104° F.
- Only use between 5° C~45° C / 41° F~113° F.



3.2. Risks during operation

3.2.1. Dress safely

Do not wear a necktie, scarf, or any loose or dangling clothing or jewelry while operating the i-mop® XL Plus. These can tangle in rotating parts, causing serious injury or death.

3.2.2. Mark the job site

The i-mop XL Plus is designed to leave a dry floor without slippery patches, no additional drying is required. When running the i-mop XL Plus with the vacuum function OFF please mark the job site with a wet floor marker.



CAUTION

The i-mop when used in a mode with water recovery engaged, leaves the floor immediately dry and safe to walk on. Please refer to local law or company policy about the use of a wet floor marker during cleaning.

3.2.3. Careful when parking

Do not park the i-mop XL Plus on ramps or slopes. Always park the i-mop XL Plus on a level, hard surface.

3.3. Risks after operation

3.3.1. Remove battery packs

It is best practice to remove the batteries before executing any cleaning or maintenance task, or before storage.

3.3.2. Machine orientation

Always keep the body of the i-mop XL Plus in an upright (park) position when replacing brushes or squeegee.



4. Transport and storage

4.1. General



CAUTION

Always keep the body of the i-mop® XL Plus in an upright position when filling the cleaning solution tank or inserting the batteries.

Before storage or transport, drain the machine and remove the batteries after each use. It is best to recharge the batteries before storing them.

4.2. Park position

The park position is the upright vertical position for storage and maintenance tasks.

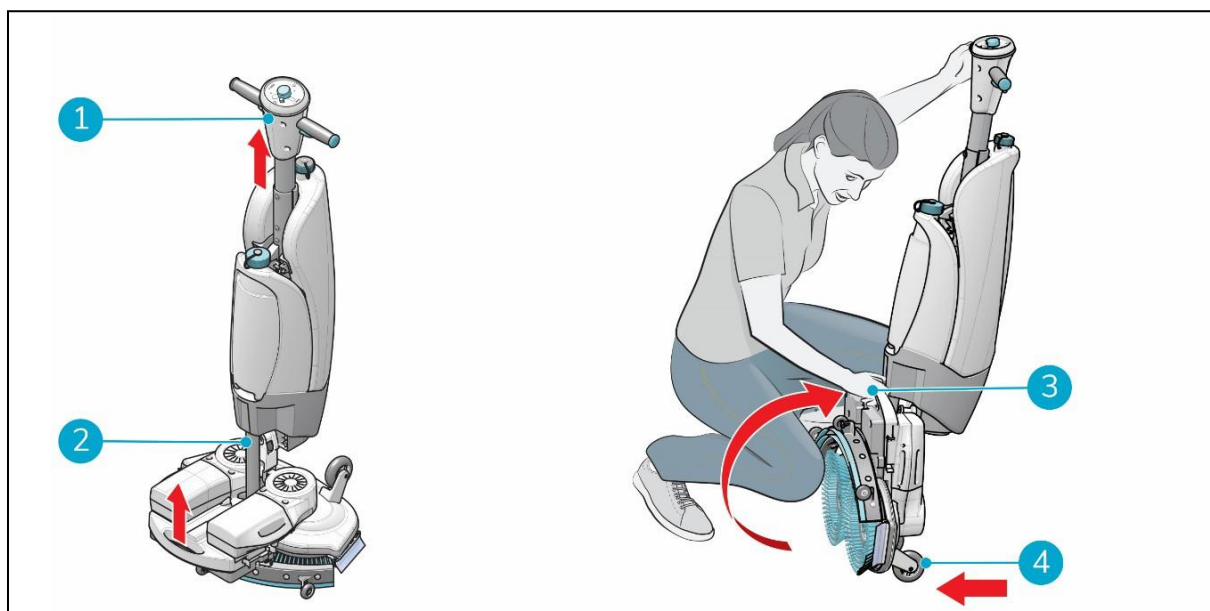


Figure 5

1. Make sure the vacuum hose (Figure 5, pos 2) is pushed back into the machine so it cannot get squeezed.
2. Crouch down and hold the handle (Figure 5, pos 1) with one hand while holding the scrub deck (Figure 5, pos 3) with your other hand.
3. Lift the scrub deck slowly until it stands upright on the front wheels (Figure 5, pos 4). Guide the body towards the scrub deck until it snaps into a resting position.



4.3. Transport outside

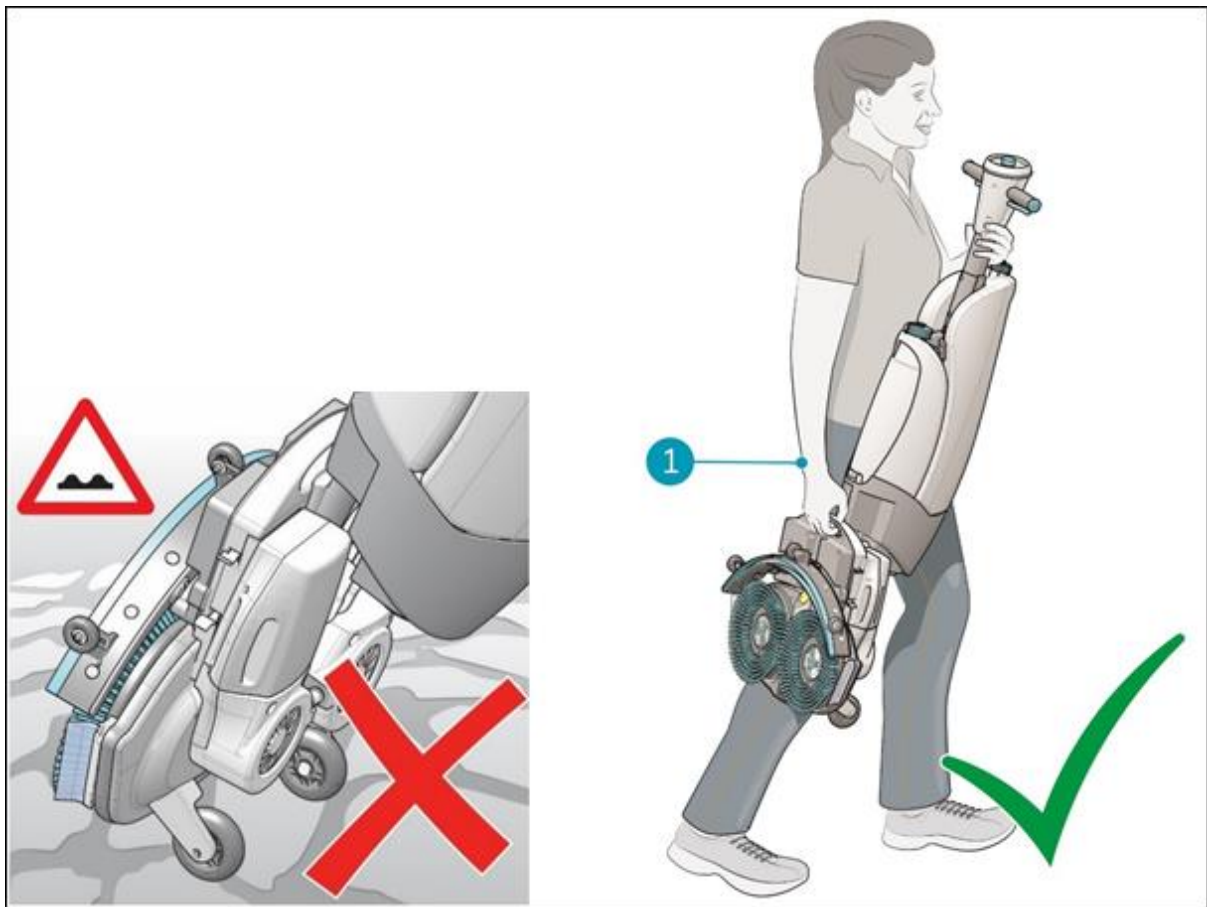


Figure 6

When outside:

1. Put the i-mop® XL Plus in park position (refer to section 4.2).
2. Carry the i-mop XL Plus with one hand while holding the handle (Figure 6, pos 1) with your other hand.



CAUTION

The transport wheels are not designed to roll over dirty surfaces and sand can cause the wheels to block.



4.4. Transport in a vehicle

The preferred way to transport your i-mop® XL Plus is in an upright position and safely secured.

1. Make sure both tanks are empty.
2. Put the i-mop XL Plus in park position (refer to section 4.2).
3. Remove the batteries.
4. Lift the i-mop XL Plus into the vehicle.
5. Secure the i-mop, using a tension belt or another appropriate restraint (Figure 7, pos 1).

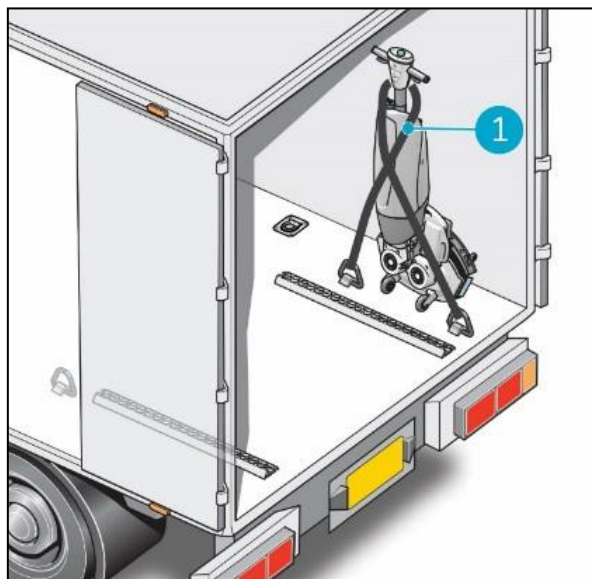


Figure 7

As the i-mop XL Plus is a compact machine, it fits in the trunk of your car. Before loading the i-mop XL Plus into your vehicle, make sure both tanks and battery packs are removed.

1. Put the i-mop XL Plus in park position (refer to section 4.2).
2. Remove the batteries and both tanks and pack them separately for transport.
3. Lift the i-mop XL Plus into your vehicle. Don't forget the tanks and batteries.
4. Prevent the i-mop XL Plus from moving around during transport by using a tension belt or another appropriate restraint.



CAUTION

The seal of the solution and recovery tank can be damaged during transport in horizontal position. Make sure you remove them before loading the machine into your car. **Improper use will void the warranty.**



5. Assembly and installation

The i-mop® XL Plus does not require much assembly. Most importantly, you will have to attach the brushes and squeegee.

5.1. Unboxing

The i-mop XL Plus body is packed in a single box. The battery and charger are delivered in a separate box and can be ordered separately.

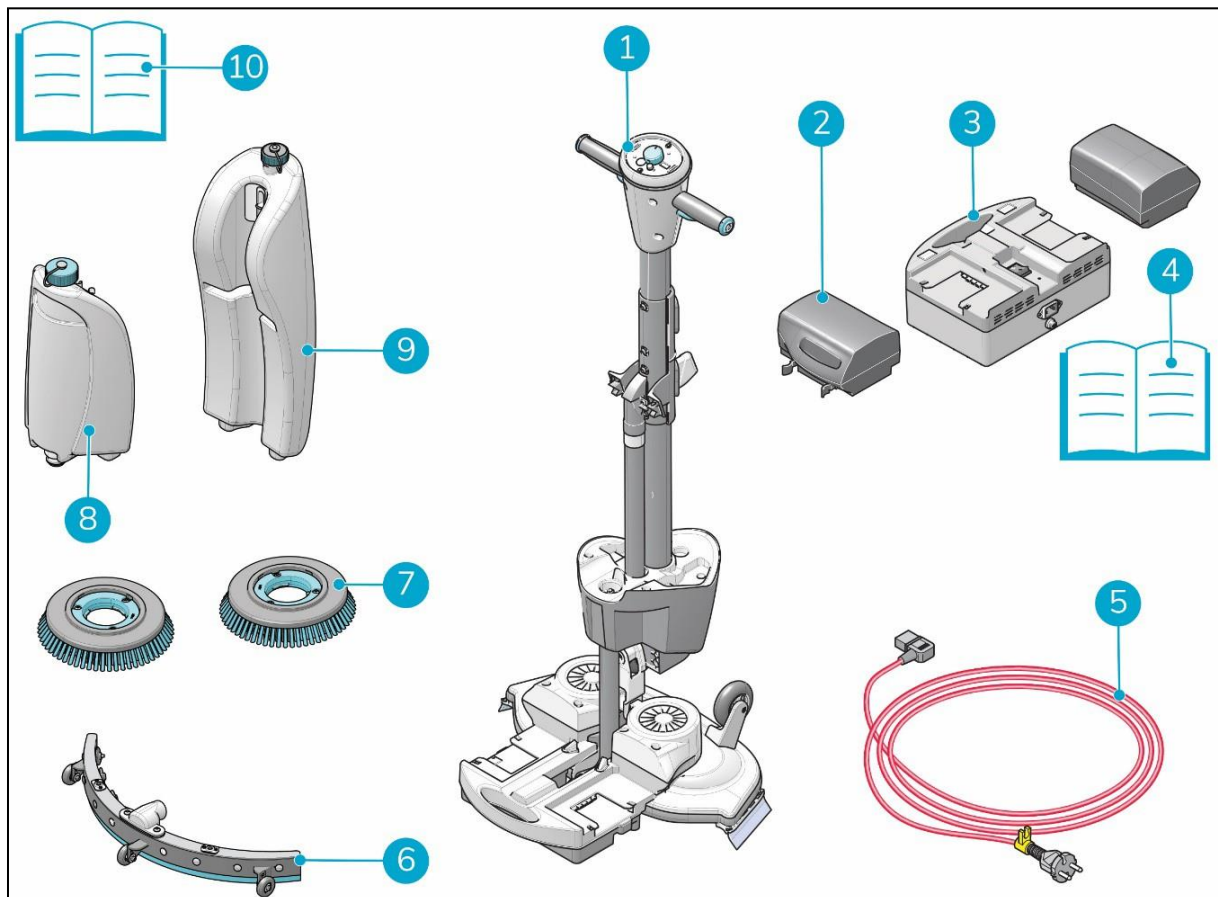


Figure 8

Legend

- | | |
|-------------------------------|------------------------------|
| 1. 1x i-mop XL Plus main body | 6. 1x squeegee assembly |
| 2. 2x batteries | 7. 2x brushes |
| 3. 1x battery charger | 8. 1x cleaning solution tank |
| 4. 1x battery charger manual | 9. 1x recovery tank |
| 5. 1x power cord | 10. 1x User manual |



5.2. Assembly

5.2.1. Charge the batteries

Before first time use, charge the batteries according to the instructions in the battery charger manual, so they are fully charged. Make sure the battery packs are charged monthly.

5.2.2. Attach the brushes

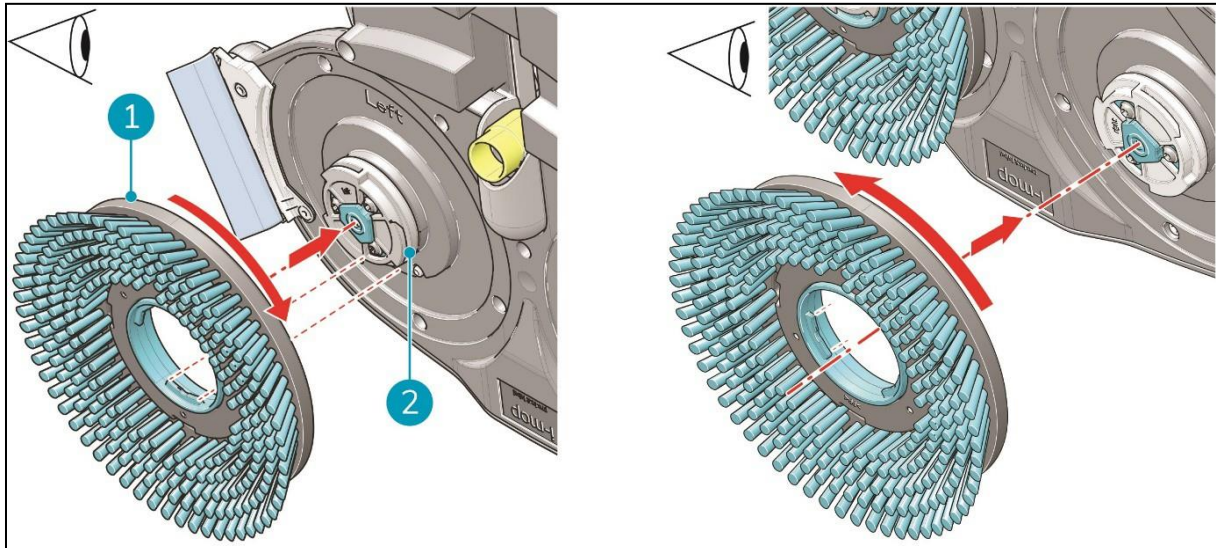


Figure 9

To attach the brushes:

1. Put the i-mop® XL Plus in park position (refer to section 4.2).
2. Hold the scrub deck firmly with one hand.
3. Align the left brush (Figure 9, pos 1) with the left motor disk (Figure 9, pos 2). Align the latches and cut-outs in the brush and motor disk.
4. Push the brush on the motor disk.
5. Turn the left brush clockwise until you see the motor disk turning. The brush is now in place.
6. Align the right brush with the right motor disk. Align the latches and cut-outs in the brush and motor disk.
7. Push the brush on the motor disk.
8. Turn the right brush anticlockwise until you see the motor disk turning. The brush is now in place.



5.2.3. Attach the squeegee

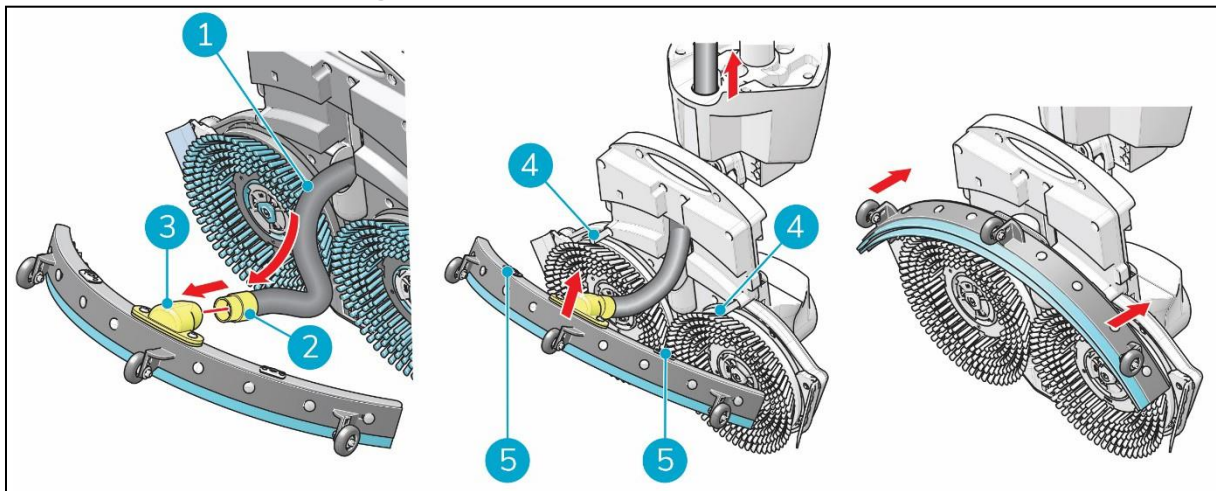


Figure 10

To attach the squeegee:

1. Take the vacuum hose (Figure 10, pos 1).
2. Insert the hose connector (Figure 10, pos 2) in the squeegee (Figure 10, pos 3).
3. Twist the hose connector 1/4 turn for a firm fit (Figure 10, pos 2).
4. Carefully pull the vacuum hose back into the machine.
5. Hold the scrub deck firmly with one hand.
1. Align the pins on the scrub deck (Figure 10, pos 4) with the holes on the squeegee (Figure 10, pos 5).
6. Push the left side of the squeegee in place.
7. Push the right side of the squeegee in place.

5.2.4. Install recovery tank

1. Put the bottom of the recovery tank (Figure 11, pos 1 and pos 3) on the front of the i-mop® XL Plus.
2. Push the top of the tank into place until you hear a "click" sound, the magnet (Figure 11, pos 2) will lock the recovery tank into place.

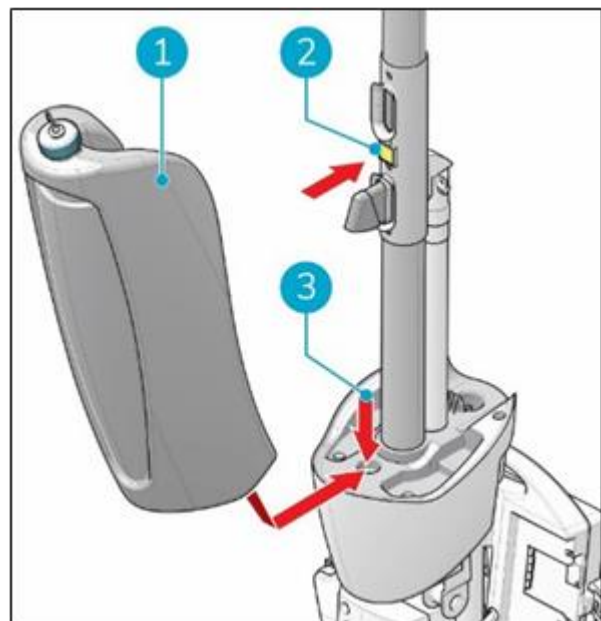


Figure 11



5.2.5. Install cleaning solution tank

1. Put the tank (Figure 12, pos 1) on the i-mop® XL Plus with the valve first.
2. Press the tank downward on the nipple to break the valve seal.
3. Push the tank into place until you hear a "click".

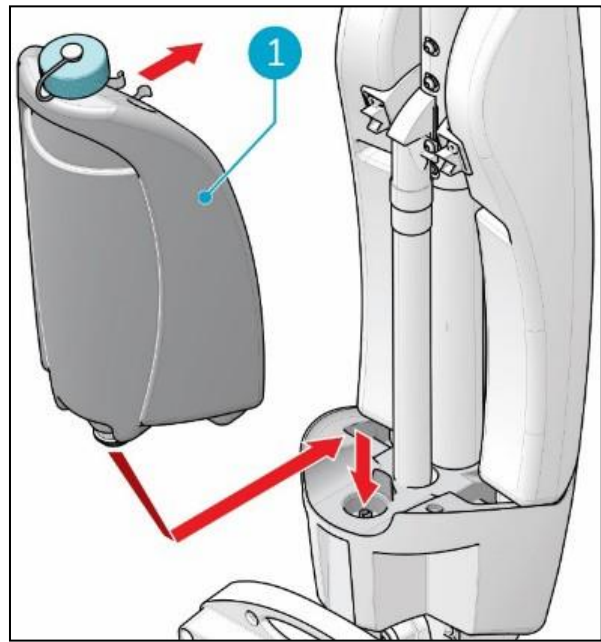


Figure 12



6. Operation

6.1. Before you start

Check the brushes and squeegee for wear and tear (refer to section 7 on maintenance).

6.1.1. Insert the batteries

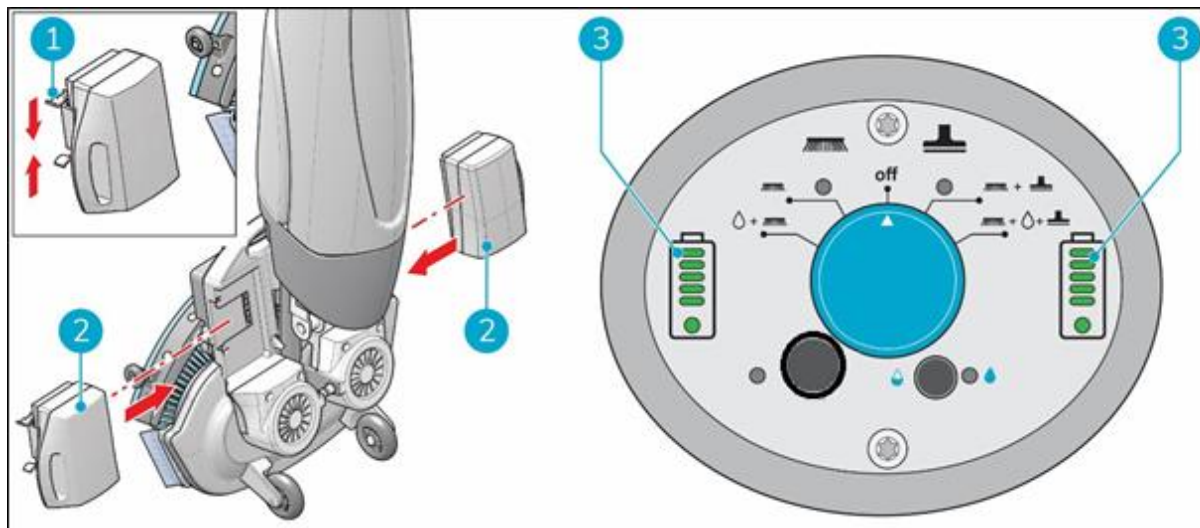


Figure 13

Best to use a set of batteries that are fully charged before operating the i-mop®.

1. Push the blue coded battery (Figure 13, pos 2) in the blue battery slot. A click signals the battery is locked in place (Figure 13, pos 1).
2. Push the gray coded battery in the gray battery slot. A click signals the battery is locked in place.
3. During operation, the battery indicators (Figure 13, pos 3) on the control panel show the amount of power left.



ATTENTION

Before you start using the i-mop for the first time, make sure that you have read and understood chapter 10.2: i-mop Plus Automatic Shutoff System.



6.1.2. Fill the cleaning solution tank

1. Remove the stopper.
2. Pour in a maximum of 1 gal / 4 L of cleaning fluid.
3. Replace stopper and make sure it seals tight.
4. Put the i-mop® XL Plus in park position (refer to section 4.2).
5. Put the tank on the i-mop XL Plus with the valve first (Figure 14, pos 1).
6. Press the tank downward to break the valve seal.
7. Push the tank into place until you hear a "click".
8. Even when wearing gloves, clean your hands afterwards.

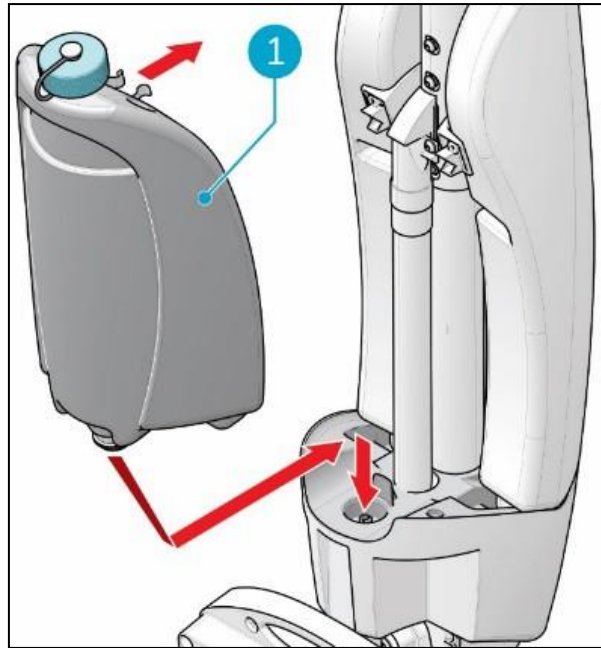


Figure 14

6.2. Operation procedure

6.2.1. Walking to the job site



Figure 15



To move the i-mop® XL Plus from one location to another one in a building:

1. Put the i-mop XL Plus in park position (refer to section 4.2).
2. Hold the handle with one hand (Figure 15, pos 1).
3. Walk slowly and pay extra attention if you pull the i-mop XL Plus over obstacles.
4. To lift the i-mop XL Plus over obstacles, always use two hands.
 - Hold the handle with one hand.
 - Lift the scrub deck with the other hand

6.2.2. At the job site

1. Crouch down while holding the scrub deck firmly with one hand (Figure 16, pos 2).
2. Push the handle forward with your other hand (Figure 16, pos 1).
3. Bring the scrub deck slowly down to the floor.

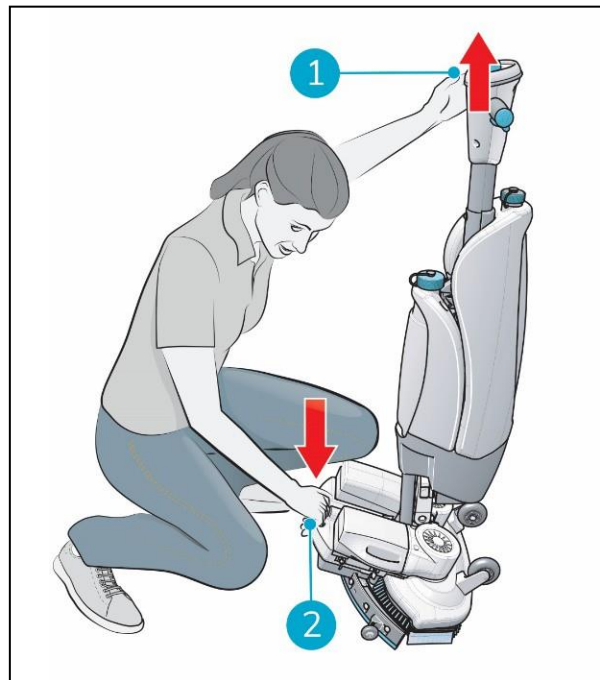


Figure 16



WARNING

Never push down the scrub deck with your foot.



ATTENTION

Unlike previous generations of i-mop, the i-mop XL Plus will only power on when the scrub deck is lowered on the floor. When parked in its upright position, the i-mop XL Plus will remain completely powered off to avoid unwanted battery discharge.

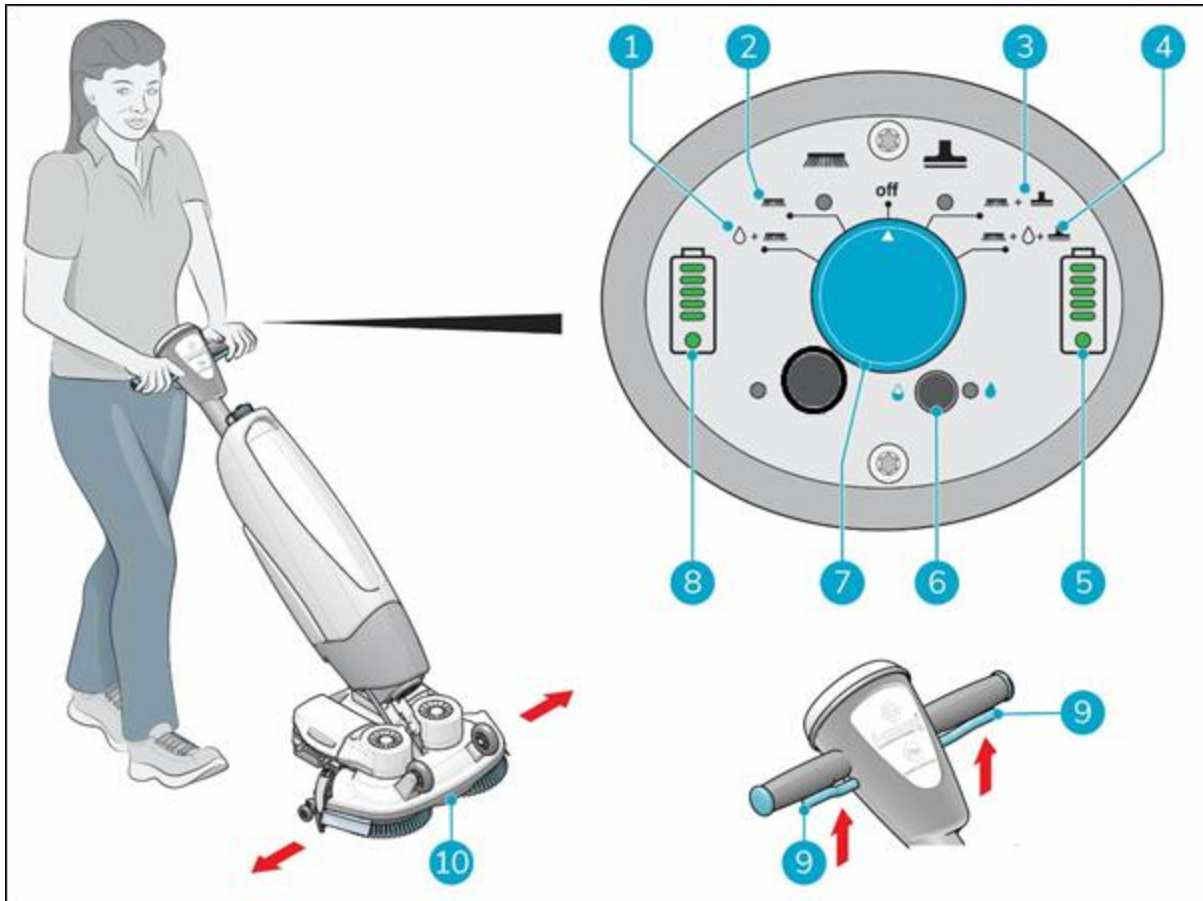


Figure 17

4. Stand behind the i-mop® XL Plus.
5. Choose your cleaning mode via the main switch (Figure 17, pos 7). This will also turn on the i-mop XL Plus.
 - MODE 1: Brush + water/cleaning solution (Figure 17, pos 1).
 - MODE 2: Brush only (Figure 17, pos 2).
 - MODE 3: Brush + vacuum (Figure 17, pos 3).
 - MODE 4: Brush + water/cleaning solution + vacuum (Figure 17, pos 4).
6. Hold the handle with both hands.
7. Squeeze the trigger on the handle (Figure 17, pos 9).
8. Once the trigger is squeezed the i-mop XL Plus will move forward.
9. Walk behind the i-mop XL Plus.
10. Steer by gently turning the handle left or right to move the scrub deck (Figure 17, pos 10).

TIP: Learn to swivel

Operating the i-mop XL Plus is very intuitive and like steering a bicycle. The i-mop XL Plus is designed to move forward. To turn, stop walking and use your inside hand (the hand in the direction you want to go to) to turn the handle. The i-mop XL Plus can swivel 360 degrees making it possible to reverse direction.



11. Releasing the trigger (Figure 17, pos 9) will immediately stop the i-mop® XL Plus. The vacuum motor will stop after 3 seconds.



WARNING

Operating below a 32 degree angle will trigger the i-mop to temporarily shut off its functions to avoid water going into the vacuum motor chamber.

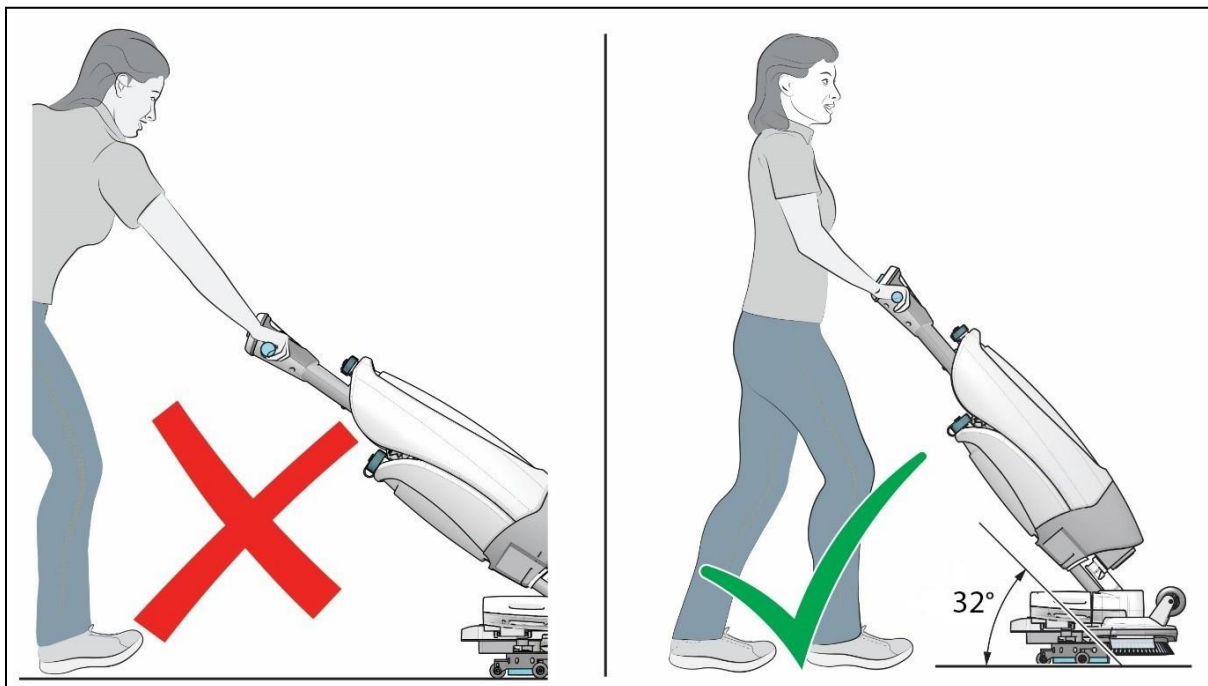


Figure 18

6.2.3. ECO mode

The ECO mode will use 40% less cleaning solution.

1. Turn on the ECO mode by pushing the ECO button, after you have selected your cleaning mode. (Figure 19, pos 1).
2. Turn off ECO mode by pushing the ECO mode again.
3. To adjust water flow when ECO mode is activated, you can remove the rubber cap (Figure 19, pos 2) and use a small flathead screwdriver to change the flow rate on the dial below the cap. See flow rate table below.

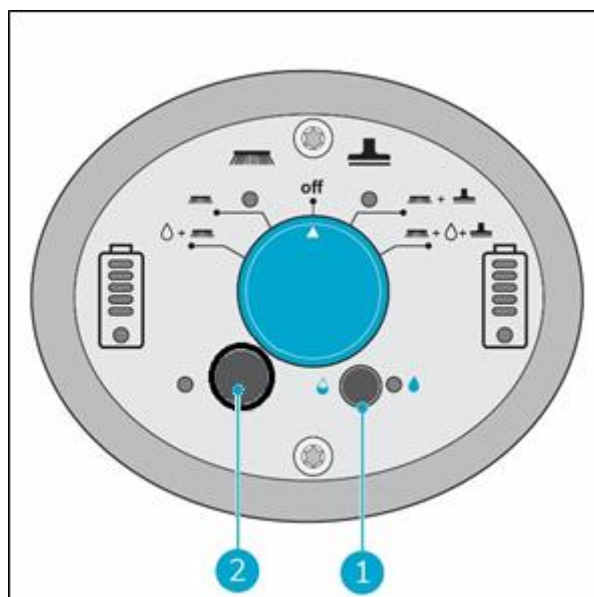


Figure 19



Setting of water save button

Standard flow: 250ml/minute

Arrow position	Water flow down time (Sec.)	Water stop tme (Sec.)	Water flow(ml/minute)	Remark
0	0.588	9.412	15	minimum flow rate water saving
1	1.176	8.824	29	
2	1.764	8.236	44	
3	2.352	7.648	59	
4	2.94	7.06	74	
5	3.528	6.472	88	
6	4.116	5.884	103	
7	4.704	5.296	118	
8	5.292	4.708	132	
9	5.88	4.12	147	
A	6.468	3.532	162	Standard flow rate water saving
B	7.056	2.944	176	
C	7.644	2.356	191	
D	8.232	1.768	206	
E	8.82	1.18	221	
F	9.408	0.592	235	Maximum flow rate water saving

Note that the flow rate is only affected when ECO mode is turned on.

6.2.4. Angle warning indicator

The angle warning indicator is situated on the control panel (Figure 20, pos 1). When the angle of the machine is below 32 degrees, the indicator light will turn on and the water recovery function will be paused. When the handle is raised above 32 degrees the vac motor will restart after 5 seconds.

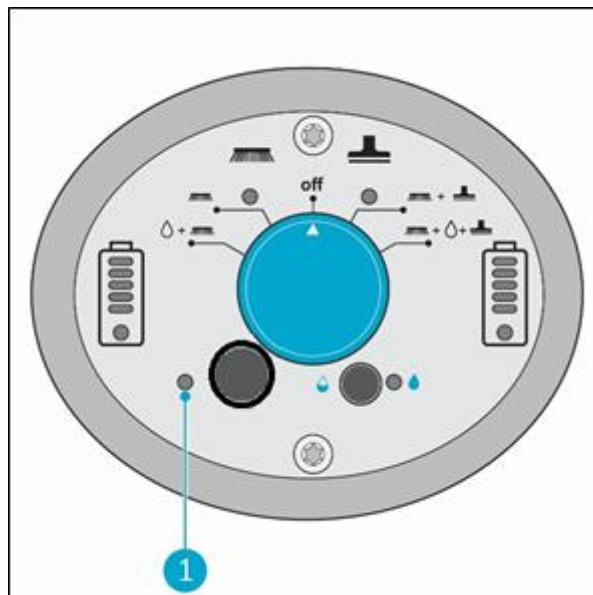


Figure 20

6.2.5. Turn off the i-mop® XL Plus

1. Use the i-mop XL Plus main switch (Figure 21, pos 1) and choose MODE 3 Brush + Dry vacuum (Figure 21, pos 2).
2. Operate it about 15-20 feet further to vacuum remaining cleaning solution up.
3. Then set the main switch to the "OFF" position.

Note that the vacuum motor will continue to run for approximately 3 more seconds.

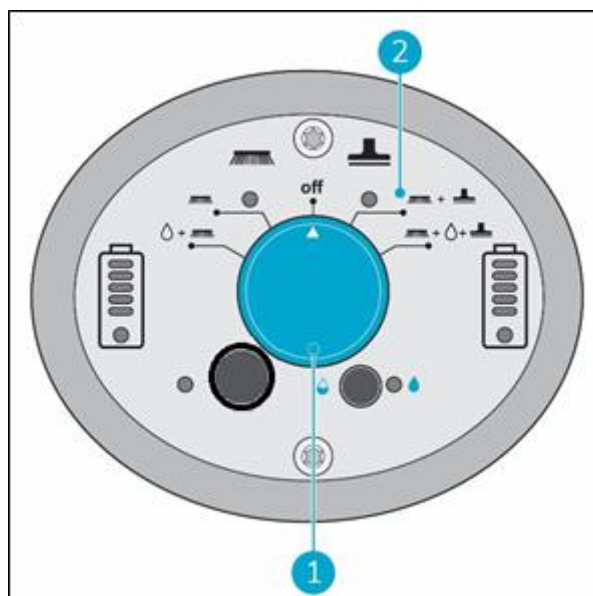


Figure 21



6.2.6. Emptying tanks

Dispose water or cleaning solution from both tanks in an appropriate drain. Even though the recovery tank is bigger, empty it each time the cleaning solution tank is filled.



WARNING

Please observe the local provisions regarding solution disposal related to wastewater treatment.

6.3. Cleaning and storage

6.3.1. Flush the system

Be sure to flush the tanks out completely. To thoroughly flush out any solution in the lines and valves:

1. Refill solution tank with 0.5 to 1 liter of clean water.
2. Use the i-mop® XL Plus main switch (Figure 22, pos 1) and choose MODE 4 Brush + Water/Cleaning solution + Dry vacuum (Figure 22, pos 2).

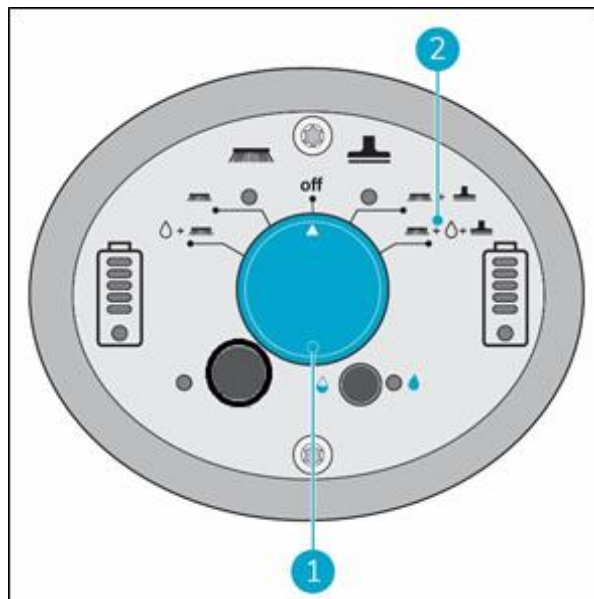


Figure 22

6.3.2. Cleaning the tanks

At least before storing the machine you need to clean the i-mop tanks, especially the recovery tank.

1. Dispose water or cleaning solution from both tanks in an appropriate drain.
2. To clean the recovery tank thoroughly:
 - Partially fill the tank with fresh water and hold it horizontally with the holes facing up.
 - Tilt the tank repeatedly, thoroughly rinsing all the dirt and debris out from the tank.
3. To clean the solution tank, follow the same procedure.

TIP: Dry the tanks

Open both tank caps before storage to allow the tanks to dry.



6.3.3. Removing battery packs

1. Put the i-mop® XL Plus in park position (refer to section 4.2).
2. Hold the i-mop XL Plus by the scrub deck to stabilize.
3. While pressing both plastic pins inwards (Figure 23, pos 1), pull each battery pack away (Figure 23, pos 2).
4. When the i-mop XL Plus isn't used regularly, store the charged battery packs in a dry, clean place.
5. Make sure the battery packs are charged monthly.

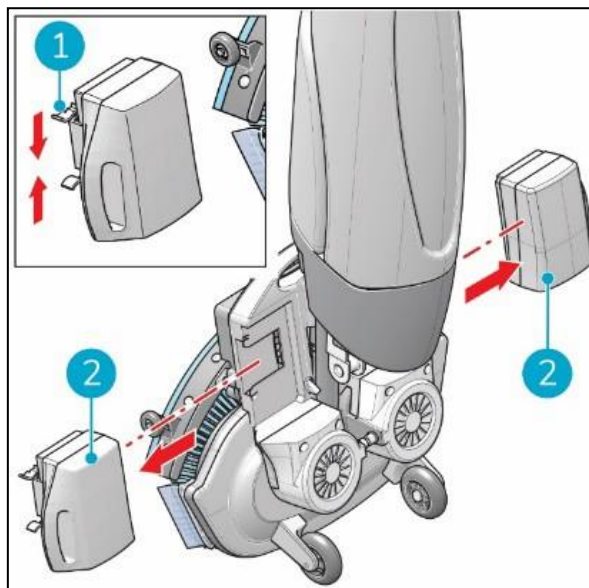


Figure 23

6.3.4. Check the brushes and squeegee

1. Check to see if both brushes are clean and intact, refer to section 7.1 on how to remove them.
 - Clean them under fresh water or replace them if necessary.
 - Replace brushes if the yellow wear indicator is the same height as other bristles.
2. Check to see if the squeegee is clean and intact, refer to section 7.2.1 on how to remove it.
 - Clean it with fresh water and wipe it with a clean, damp cloth.
 - Replace the squeegee blades when necessary.

6.3.5. Store in an upright position

1. Please ensure that the i-mop XL Plus is parked in a place where nobody can bump into it.
2. Put the i-mop XL Plus in park position (refer to section 4.2).
3. Store the i-mop XL Plus close to a wall (Figure 24, pos 1) with the handle pointing towards the wall and the brushes facing away from the wall.

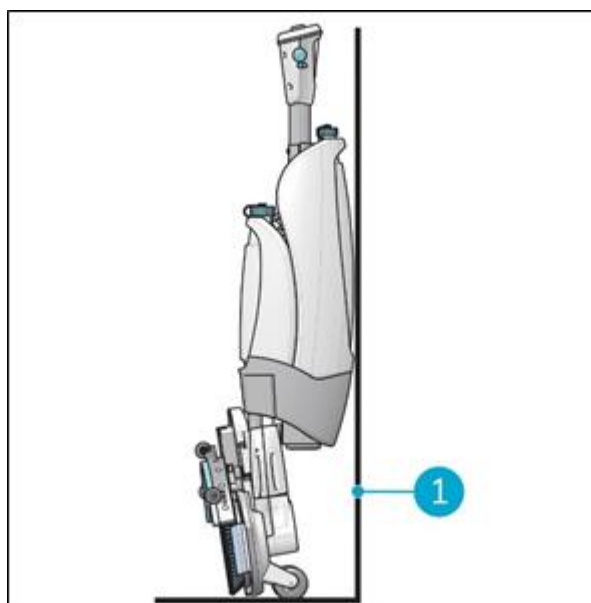


Figure 24



ATTENTION

Unlike previous generations of i-mop®, the i-mop XL Plus will only power on when the scrub deck is lowered on the floor. When parked in its upright position, the i-mop XL Plus will remain completely powered off to avoid unwanted battery discharge.

6.3.6. Cleaning the particle filter

1. Locate the loader assembly top cover (Figure 25, part 1) under the solution tank.
2. Remove the valve, (Figure 25, part 3) by turning it counter-clockwise.
3. Remove the particle filter (Figure 25, part 2) and run it under warm water to clean it out. You may use a soft brush if it is heavily clogged.

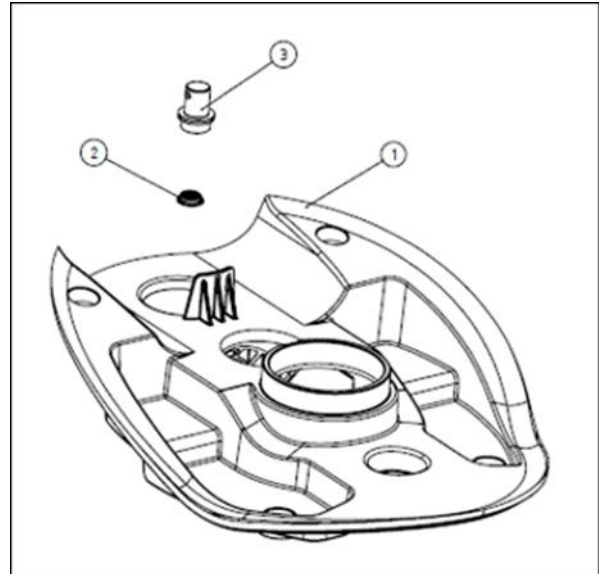


Figure 25



7. Maintenance

7.1. Brush replacement

The brushes come in pairs and wear out over time. Replace when the yellow brush indicator strip is at the same height as the other bristles.

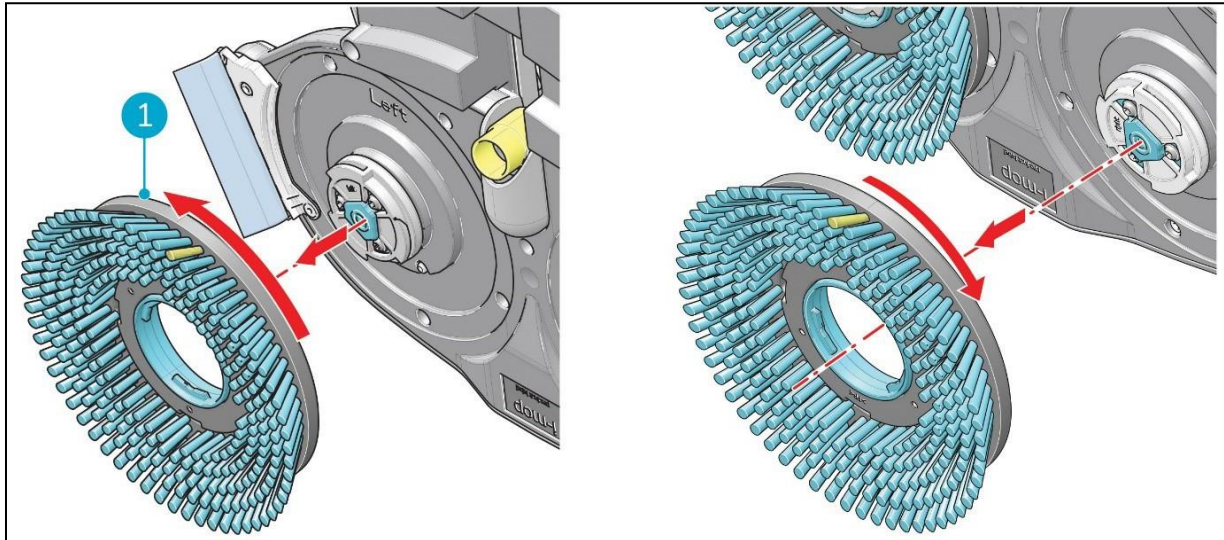


Figure 26

The brushes are attached to the scrub deck via a bayonet fitting.

1. Put the i-mop® XL Plus in park position (refer to section 4.2).
2. Hold the scrub deck firmly with one hand.
3. Using your other hand to turn the left brush anticlockwise (Figure 26, pos 1) until you feel resistance or see the motor disk turning as well.
4. Pull the brush off the motor disk toward you.
5. Turn the right brush clockwise until you feel resistance or see the motor disk turning as well.
6. Pull the brush off the motor disk toward you.
7. Visually inspect the motor disks.
8. Clean the i-mop XL Plus scrub deck with a clean, dry cloth before you install the brushes.



7.2. Squeegee replacement

The squeegee blades come in pairs and wear out over time. When you notice the floor is no longer being dried properly, replace the squeegee blades.

7.2.1. Detach the squeegee

1. Put the i-mop XL Plus in park (refer to section 4.2).
2. Hold the scrub deck firmly with one hand.
3. Pull on the left side of the squeegee to remove it (Figure 27, pos 1).
4. Pull on the right side of the squeegee to remove it (Figure 27, pos 2).
5. Remove the vacuum hose from the squeegee by twisting the hose.

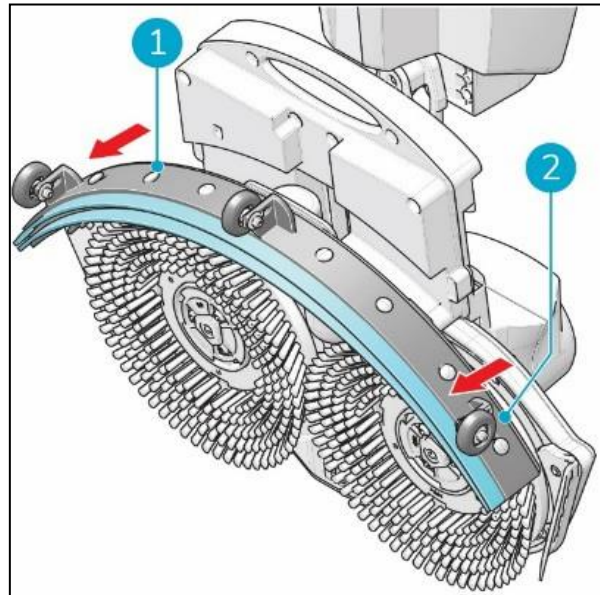


Figure 27

7.2.2. Flip/replace the squeegee blade

1. Unscrew the 8 plastic nuts on the back.
2. Take off the squeegee rear plate.
3. Once the plastic part is removed, you can easily take off the rear rubber blade.
4. Push the 8 screws through the front blade in order to remove the squeegee front plate.
5. Take off the rear rubber blade.
6. Inspect the front and rear rubber blades:
 - The first time: flip the blades so the top of the blade is now facing the floor. Push the front plate screws through the holes.
 - The second time: attach a new set of blades. Push the front plate screws through the holes



CAUTION

The special squeegee blades that contain small arrow-like shapes cannot be switched. These need to be replaced every time.

7. Put back the plastic rear plate.
8. Screw the 8 plastic nuts on the back.

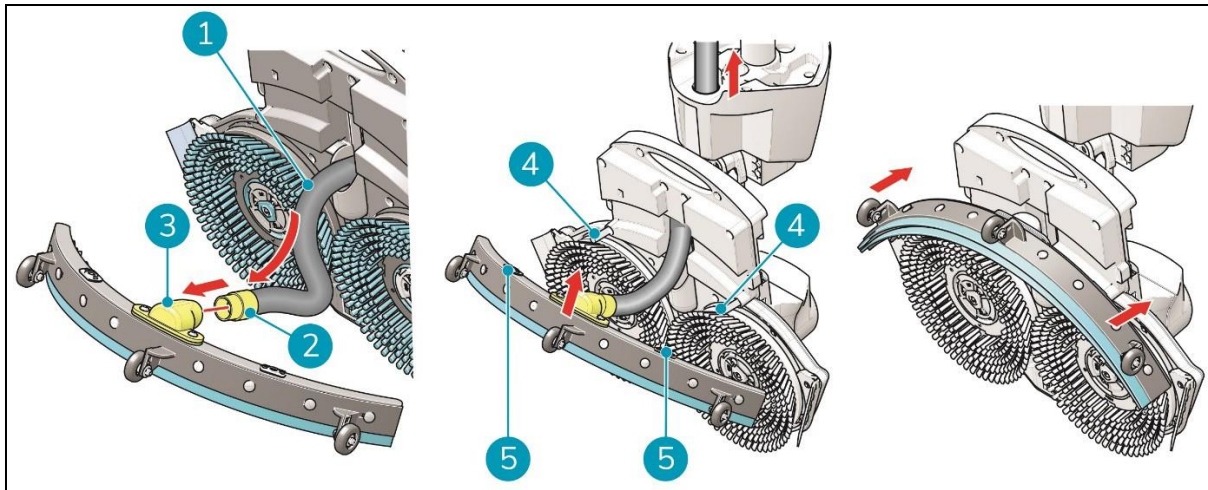


Figure 28

7.2.3. Attach the squeegee

To attach the squeegee:

1. Take the vacuum hose (Figure 28, pos 1).
2. Insert the hose connector (Figure 28, pos 2) in the squeegee (Figure 28, pos 3).
3. Twist the hose connector 1/4 turn for a firm fit (Figure 28, pos 2).
4. Carefully pull the vacuum hose back into the machine.
5. Hold the scrub deck firmly with one hand.
6. Align the pins on the scrub deck (Figure 28, pos 4) with the holes on the squeegee (Figure 28, pos 5).
7. Push the left side of the squeegee in place.
8. Push the right side of the squeegee in place.

7.3. Replace vacuum hose

1. Detach the squeegee as described in 7.2.1.
2. Remove the solution tank. You can see where the vacuum hose is connected at the i-mop® XL Plus handle.
3. Hold the scrub deck firmly with one hand.
4. Detach the vacuum hose by twisting the connector 1/4 turn anticlockwise.
5. Now you can carefully pull the vacuum hose from the top of the machine.
6. Guide the new vacuum hose via the opening to the hose connector located at the i-mop XL Plus handle.
7. Connect the top to the hose connector by twisting the clockwise 1 /4 turn until they have lined up.
8. Reinstall the squeegee.



7.4. Cleaning the recovery tank and the ball float shutoff assembly

To clean the recovery tank and ball float shutoff assembly, you have to remove the floating tank from the i-mop® XL Plus.

1. Pull the top of the recovery tank outwards (Figure 29, pos 1).
2. Lift the recovery tank up and move it away from the body of the i-mop XL Plus (Figure 11, pos 2).

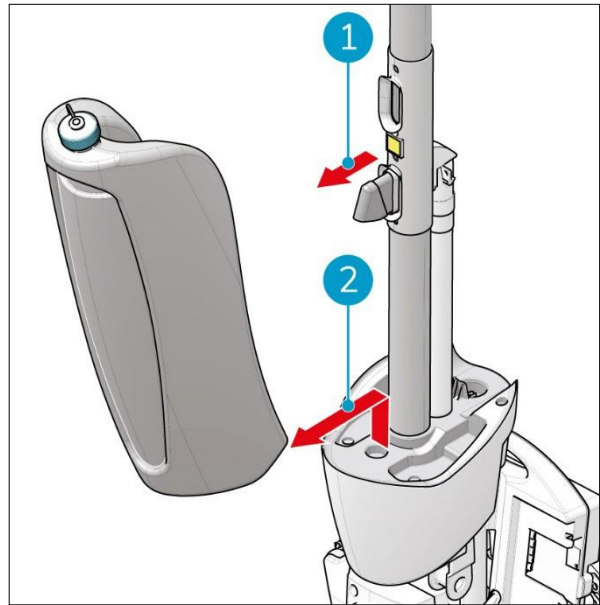


Figure 29

3. Grab the support frame of the ball float shutoff assembly (Figure 30, pos 1) between your index finger and your thumb and pull it outwards.

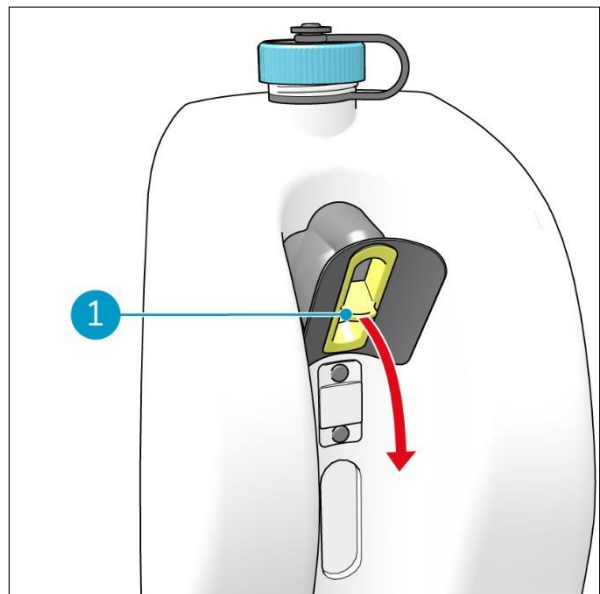


Figure 30



Taking apart the ball float shutoff.

4. Pull the support frame (Figure 31, pos 2) out of the rubber housing (Figure 31, pos 3). To do this, bend the rubber flaps (Figure 31, pos 1) outwards to release the 4 nocks of the support frame.
5. Pull the float ball housing (Figure 31, pos 4) out of the rubber housing. To do this, bend the rubber ring (Figure 31, pos 5) outwards to release the 4 nocks of the float ball housing.
6. The floating ball (Figure 31, pos 6) comes out.

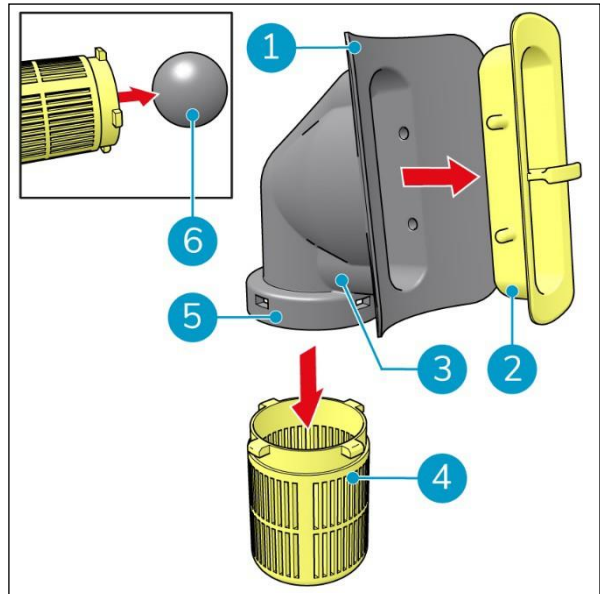


Figure 31

7. Rinse the parts with tap water. If required, clean with a brush (Figure 32, pos 1).

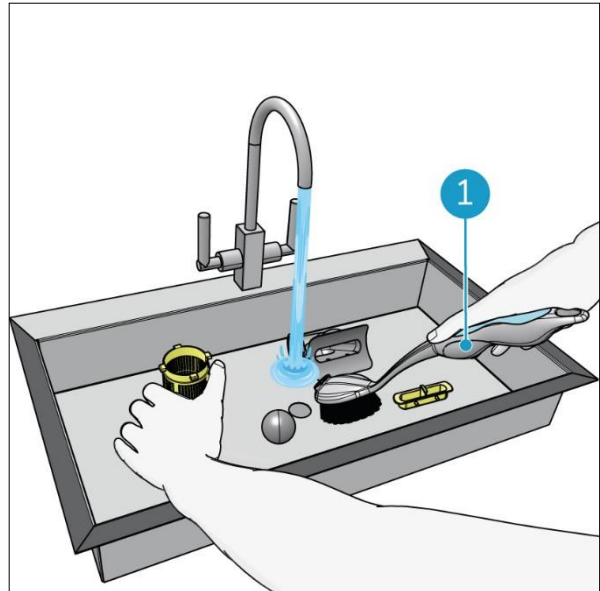


Figure 32



Assembling the ball float shutoff.

8. Place the floating ball in the float ball housing (Figure 33, pos 1).
9. Press the float ball housing (Figure 33, pos 4) into the rubber housing (Figure 33, pos 3). Make sure that the 4 nocks of the float ball housing fit into the holes in the rubber ring (Figure 33, pos 5).
10. Press the support frame (Figure 33, pos 2) in the rubber housing (Figure 33, pos 3). Make sure that the 4 nocks fit into the holes of the rubber housing.

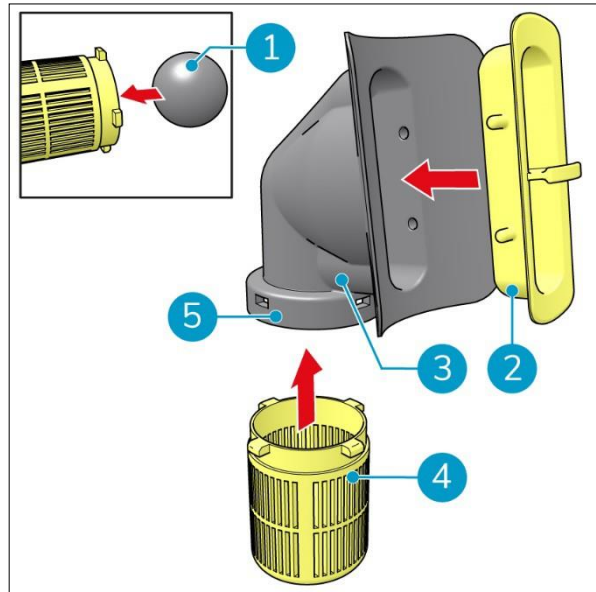


Figure 33

11. Fill the recovery tank with approximately 1 liter of tap water (Figure 34, pos 1).
12. Carefully shake it and dispose of the waste water properly.
13. Place the ball float shutoff assembly back in the recovery tank, see Figure 30. Make sure that the support frame and rubber housing sit flush on the tank and seals it.

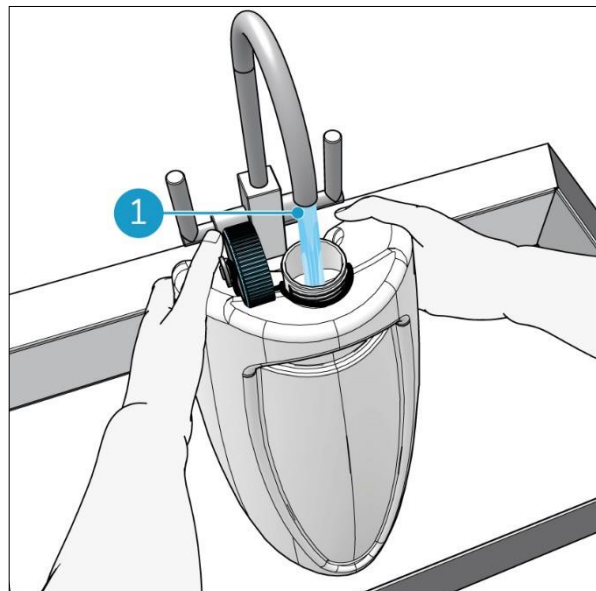


Figure 34



14. Put the bottom of the recovery tank (Figure 35, pos 1 and pos 3) on the front of the i-mop® XL Plus.
15. Push the top of the tank into place until you hear a "click" sound, the magnet (Figure 35, pos 2) will lock the recovery tank into place.

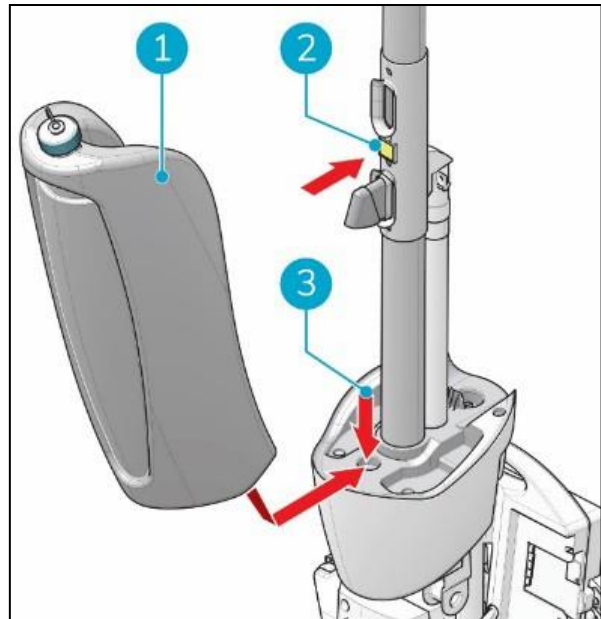


Figure 35

7.5. Recommended additional cleaning

Clean the exterior of the i-mop XL Plus weekly with a non-abrasive, non-solvent cleaner or a clean, damp cloth. To clean the scrub deck, remove the brushes first.

Clean the filter connector

Use the #2 hex wrench to remove the filter connector. Clean the filter joint with clean water.



Assemble the washed filter joint on the machine and tighten it with the #2 hex wrench.





7.6. Recommended service time

It is recommended to schedule a full service by one of our service partners every 500 hours.

7.7. Accessories

The i-mop® XL Plus can be equipped with different brushes and polishing pads. The use of these accessories is only allowed by experienced and trained operators as some polishing pads can be abrasive and can cause damage to the floor surface when applied incorrectly. For more information please contact our sales department, or the partner who provided the i-mop XL Plus.



8. Troubleshooting

Problem	Cause	Solution
No power	No batteries	Insert batteries
	Empty batteries	Charge batteries
	Batteries incorrectly placed	Remove and reinstall batteries
Insufficient/no water flow	Wrong program	Check the operating mode on the control panel
	Eco mode on	Check the ECO mode light on the control panel
	Empty tank	Fill the tank
	Tank incorrectly placed	The tank valve must be clicked on the nipple to open the seal, replace the tank
	Particle filter clogged	Ensure the solution tank has no dirt particles and the filter is clean
	Blocked water pipe	Request for service
Poor water recovery	Squeegee opening blocked	Remove the pipe and clean the squeegee opening
	Tears in squeegee blades	Replace squeegee blades
	Recovery tank ball float assembly blocked	Check the ball float shutoff assembly and clean if necessary
	Vacuum hose blocked	Check and remove blockage
	Vacuum pump not running	Request for service
Leakage	Tanks incorrectly placed	Check and reattach fluid tanks
	Tear in vacuum hose	Replace vacuum hose or request for service
Battery not charging	Battery is at end of life	Replace battery



9. Decommissioning and disposal



ATTENTION

It is the responsibility of the i-mop® XL Plus owner to dispose of the product responsibly.

After decommissioning, the i-mop XL Plus still contains valuable resources and needs to be disposed of according to your local laws and regulations regarding recycling of electrical equipment.



Before disposal please:

1. Flush the machine (refer to section 6.3.1).
2. Remove the batteries for separate disposal (refer to section 6.3.3).

TIP:











Alternatively, keep the batteries for use in another piece of i-team equipment.

3. Remove all loose components like brushes, tanks and squeegee.
4. Dispose all items according to your local laws and regulations.





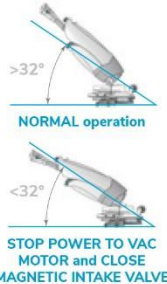
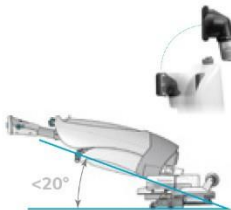
10. Attachments

10.1. Parts

ITEM		P/N	DESCRIPTION
1		1232627	Squeegee Kit, Front
2		1232629	Squeegee Kit, Rear Standard
3		1232635	Squeegee Kit, Rear Rubber, Oil-Resistant (Option)
4		1232588	Squeegee Assembly Complete
5		1233871	Rubber Retainer, Squeegee Mount Plate (Qty 1)
		1234948	Rubber Retainer, Squeegee Mount Plate (Qty 100)
6		1232578	Brush Kit, Blue Medium Bristle Set of 2 (Standard)
7		1232607	Brush Kit, Red Hard Bristle Set of 2 (Option)
8		1232608	Brush Kit, Light Blue Soft Bristle Set of 2 (Option)
9		1232613	Pad Driver Kit, Blue Set of 2
10		1234346	Red Pad (Box of 10)
11		1234350	Blue Pad (Box of 10)
12		1234344	Black Pad (Box of 10)
13		1251757	Recovery Tank Assembly
14		1251765	Ball Float Assembly
15		1232514	Solution Tank Assembly Blue Cap (Standard)
16		1232100	Battery Kit (Left & Right)
17		1250527	Battery Charger



10.2. i-mop® Plus Automatic Shutoff Systems

Shutoff System		Main Switch	Park Position Switch	Angle Switch	Overflow Safety Ball Float Shutoff
Protects Against		Shuts off power to machine when not in use.	Prevents battery trickle discharge when scrub deck is placed in park position.	Protects vacuum motor from water intake when handle is lowered below 32 degrees.	Protects vacuum motor from flooding when handle is lowered below 15-20 degrees.
Activation Mechanism		Set Dial position to OFF.	Raise deck to disable battery discharge. Lower deck to enable battery power.	When handle is lowered below 32 degree angle , the Angle Switch is activated to prevent further water intake.	When handle is lowered below 15-20 degrees the Ball Float Shutoff is activated to prevent overflow into the vacuum motor even when system power is OFF.
Notes		When Main Switch power is off, and deck is left in the down (Operating) position, the main board remains connected to batteries and trickle battery discharge still occurs. Raising the deck to the up (Park) position engages the Park Position Switch which completely shuts down batteries.	Prevents battery discharge even if Main Switch is left on in any of the cleaning positions.	<ul style="list-style-type: none"> Cuts off power to the vac motor to prevent further intake of solution; Closes magnetic intake valve to prevent solution outflow into vac motor. When handle is raised above 32 degrees , vac motor will restart after 5 seconds.	The mechanical Ball Float Shutoff does NOT affect any electrical systems (main switch, vac motor, brush motor, magnetic valve). When water flow stops because floating ball blocks suction, put the machine back into normal operating position. This will release the Ball Float from the blocked position. Note that the machine must be in upright position to restart. When Recovery Tank is full , the Ball Float will shut off the water intake. Empty and rinse tank. Check Ball Float for debris. To release the ball, place machine in operating position, then press the trigger on and off to restart the machine.
Visualization		 Set Dial position to OFF	 STOPS BATTERY DISCHARGE STARTS BATTERIES	 NORMAL operation STOP POWER TO VAC MOTOR and CLOSE MAGNETIC INTAKE VALVE	 WATER INTAKE IS BLOCKED
Effects	Main Board / Batteries	ON	OFF	ON	ON
	Vac Motor	OFF	OFF	OFF	ON
	Brush Motor	OFF	OFF	ON	ON
	Magnetic Valve	OFF (closed)	OFF (closed)	OFF (closed)	ON (open)
	Mechanical Valve	NO EFFECT	NO EFFECT	NO EFFECT	OFF (closed)