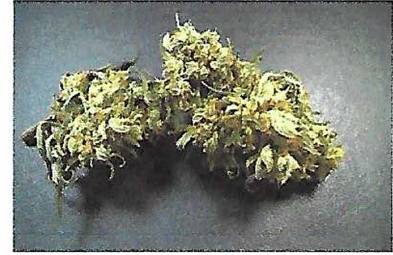


EVIO Labs Medford (pka Kenevir Research)
 540 East Vilas Road, Suite F, Central Point, OR 97502
 541-668-7444 / OLCC 010-1001626980D / www.EVIOLabs.com

32
Ventura Seed Company
AG-R1058058AHS



Variety: Cherry Soda
Sample ID: M190748-11
Matrix: Industrial Hemp
METRC Batch #: N/A
Sampling Method/SOP: SOP.T.20.010
Date Sampled: 06/25/19 08:00
Date Accepted: 06/24/19
Harvest/Process Lot ID: 10122

Batch ID: 10122
Batch Size (g): 1000
Unit for Sale: Y
Harvest/Production Date: 6/18/2019

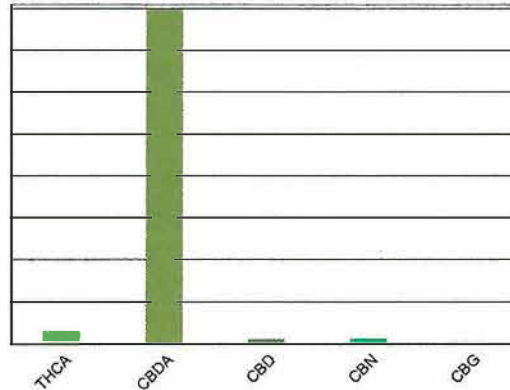
Cannabinoid Analysis

Date/Time Extracted: 06/25/19 11:52
 Date/Time Analyzed: 06/25/19 18:04

Analysis Method/SOP: SOP.T.40.020

Cannabinoids	LOQ(%)	mg/g	% weight
Total THC ((THCA*0.877)+Δ9THC)		2.8	0.280
Total CBD ((CBDA*0.877)+CBD)		158.0	15.80
THCA	0.050	2.8	0.280
delta 9-THC	0.050	< LOQ	< LOQ
delta 8-THC	0.050	< LOQ	< LOQ
CBDA	0.050	155.6	15.56
CBD	0.050	1.19	0.119
CBN	0.050	1.21	0.121
CBG	0.050	< LOQ	< LOQ
CBC	0.050	< LOQ	< LOQ
Sum of tested Cannabinoids	0.050	158.0	15.8

Cannabinoid Profile



"Total THC" and "Total CBD" are calculated values and are an Oregon reporting requirement (OAR 333-064-0100). For Cannabinoid analysis, only delta 9-THC, THCA, CBD, CBDA are ORELAP accredited analytes. Cannabinoid values reported for plant matter are dry weight corrected; Oregon Water Activity action level is 0.65Aw and Oregon Moisture Content action level is 15%, Samples above limit will be highlighted RED; FD = Field Duplicate; LOQ = Limit of Quantitation.

Ian Riversong
 Laboratory Director - 6/25/2019

EVIO Labs Medford (pka Kenevir Research)
 540 East Vilas Road, Suite F, Central Point, OR 97502
 541-668-7444 / OLCC 010-1001626980D / www.EVIOLabs.com

Quality Control

Batch: M19F043 - ODA Exhibit B/ SOP.T.30.050 Prep for Cannabinoids

Blank(M19F043-BLK1)			Extracted: 06/25/19 11:52		Analyzed: 06/25/19 12:52		
Analyte	Result	LOQ	Recovery Limits	Analyte	Result	LOQ	Recovery Limits
THCA	< LOQ	0.050 (%)	< LOQ	delta 9-THC	< LOQ	0.050 (%)	< LOQ
delta 8-THC	< LOQ	0.050 (%)	< LOQ	CBDA	< LOQ	0.050 (%)	< LOQ
CBD	< LOQ	0.050 (%)	< LOQ	CBG	< LOQ	0.050 (%)	< LOQ
CBN	< LOQ	0.050 (%)	< LOQ	CBC	< LOQ	0.050 (%)	< LOQ
Sum of tested Cannabinoid:	< LOQ	0.050 (%)	< LOQ				

LCS(M19F043-BS1)			Extracted: 06/25/19 11:52		Analyzed: 06/25/19 13:09		
Analyte	% Recovery	LOQ	Recovery Limits	Analyte	% Recovery	LOQ	Recovery Limits
THCA	96.1	(%)	70-130	delta 9-THC	94.6	(%)	70-130
CBDA	117	(%)	70-130	CBD	113	(%)	70-130



Ian Riversong
 Laboratory Director - 6/25/2019