

## INSTALLATION AND OPERATION INSTRUCTIONS

**TORNADOXS**

### TornadoXS XT1M-047-BBL4

#### Installation Guide

Beacon and Speaker/Siren Combination



#### Product Introduction

Redtronic's TornadoXS (TXS) is a combination beacon, siren & speaker system designed for temporary mount applications (primarily magnetic). Any vehicle can instantly become an emergency response vehicle whilst meeting all regulatory standards required for public road use. The TXS is also perfect for users not wanting to make permanent installations to their vehicle.

The TornadoXS incorporates the immensely popular low-profile Tornado B47 beacon (with a blue lens as standard) with a S20IS digital siren & speaker within a compact and robust enclosure.




As standard the TXS is supplied with a multifunctional cigarette plug. For users requiring enhanced functionality there is also a model which includes a inline LINX4 universal controller.

The user can programme the desired siren tone from 10 countries and 27 tone variants by following a programming sequence using the inbuilt programming port.

The TXS is designed for the toughest environments and is approved to EMC UNECE R10, UNECE R65, UTAC and comes with 7 standard flash patterns including ICAO/CAP168 airport pattern. The TornadoXS is manufactured in the UK and is endorsed with a 3 year warranty.



## Part Numbers

Part Number	Colour	Fixing Mount	Type	Voltage	Warranty
XT1M-047-BBLL		Magnet	Latch-Latch cigarette plug	10-30v	3 Years
XT1M-047-BBLM		Magnet	Latch-Momentary cigarette plug	10-30v	3 Years
XT1M-047-BBL4		Magnet	LINX4 (3 tones)	10-30v	3 Years

**Please Note:** The TornadoXS (TXS) is currently only available with the Tornado B47 beacon blue LED and blue lens. As standard the mounting option is magnetic. For customers requiring alternative led, lens colours, and mounting options it is possible to order spare parts to modify the standard models to your requirements. Single colour models only available. Please contact us for further information.

## Flash Patterns

Pattern 1	Quad
Pattern 2	Triple
Pattern 3	Double
Pattern 4	Single
Pattern 5	Quad/Single
Pattern 6	Quad/Triple/Double/Single
Pattern 7	CAP168

## Technical Information

<b>Dimensions</b>	192mm x 176mm x 180mm (WxHxD)
<b>Voltage Range</b>	11-16VDC and 20-30VDC
<b>Number of LEDs</b>	16
<b>Amps / Current Peak Max</b>	3 Amp at 12VDC
<b>Recommended Fuse rating</b>	10 Amps (inbuilt in cigarette plug)
<b>LED Power</b>	3 Watt (per flashing LED)
<b>IP Rating</b>	IP45K (main unit), IP69K (beacon), IP69K (speaker)
<b>Approval R10</b>	Yes
<b>Approval R65 &amp; CLASS</b>	Yes Class II – Blue
<b>Approval CISPR25 &amp; CLASS</b>	N/A
<b>CAP168 / ICAO</b>	Yes
<b>DIM Mode or Auto DIM</b>	Auto Dim as standard
<b>Cruise</b>	No
<b>GATSO</b>	No
<b>Synchronisation</b>	No
<b>Weight (approx.)</b>	2.2kg
<b>Operating Temperature</b>	-40 <sup>o</sup> to 105 <sup>o</sup>
<b>Lens Material</b>	3mm UV Stable PMMA (main unit), PC (beacon), Nylon (Siren)
<b>Mounting</b>	Magnetic
<b>Registered Community Design</b>	N/A
<b>Warranty</b>	3 Years



## APPROVALS

UTAC is a French organisation that specialises in testing, certification, and research in the automotive and transportation industry. The S20IS integrated within the TXS meets the standard set by UTAC for all French siren tones.

## Tone selection

The TornadoXS has been designed with an inbuilt microphone connection which enables the user to either connect a Redtronic microphone to the unit to output PA (public address) from the system, or with a dedicated connector (included in kit of parts) the user can reprogramme the country tone on the sirens so that it can provide a total of 27 tone variants. This allows the TXS to be used worldwide with one device fitting all global requirements. The tone programming feature uses a combination of the programming port and the pattern select button in the rear of the unit.

See page 10 for tone programming procedure.



## Cable Connections

FUNCTION	WIRE COLOUR	DESCRIPTION
Cigarette plug L-L	N/A Sheath black	Switch 1 activates power to unit (beacon flash) {red led}, Switch 2 activates tone trigger {blue led} - meant for most European tones
Cigarette plug L-M	N/A Sheath black	Switch 1 activates power to unit (beacon flash) {red led}, Switch 2 activates tone trigger {momentary action} - intended for International tones on a loop
Cigarette plug LINX4	N/A Sheath black	Switch 1 activates power to unit (beacon flash) {red led}, Switch 2 activates tone trigger 1, Switch 3 activates tone trigger 2, Switch 4 activates tone
Pattern	Black switch (located on main enclosure)	Changes the flash pattern by momentarily applying to positive. Apply to +ve for 2-3 seconds to revert to quad flash (pattern 1)
Microphone connector	N/A	Plug in Redtronic microphone to activate PA function or use as a programming port for tone selection
Autodim	N/A	Activate night mode via AUTODIM as standard

## Installation

The TornadoXS requires the use of a cigarette plug and providing a minimum of 4amps to the device to function properly. Plug the cigarette plug into the socket/power supply and use the appropriate switches to activate the light and/or siren.

## Flash patterns

Whilst powering the device (with the beacon flashing), the black switch on the rear of the unit should be momentarily pressed to cycle to the next pattern. Repeat this action until you have found an appropriate flash pattern.

**Troubleshoot Tip!** If the pattern only provides a slow single flash the lamp has accidentally been programmed to CAP168/ICAO flash pattern. Undo this by powering the beacon and apply the pattern select button to positive (+ve) for 10 seconds. The flash pattern will noticeably change.

## Mounting Installation



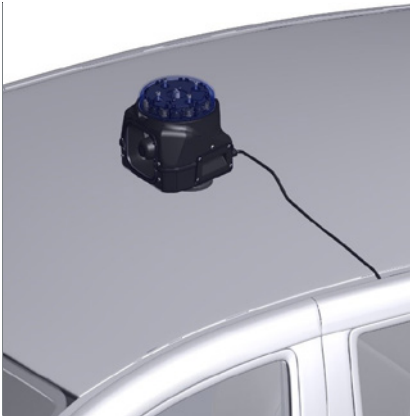
### STEP 1:

It's important to clean the vehicle roof with a damp cloth before applying the TornadoXS. Make sure the surface area is completely dry before proceeding with the application.



### STEP 2

Before using the TornadoXS, make sure to clean it thoroughly and check for any metal parts that may have accumulated on the magnets during storage. This is important to ensure that the magnets do not scratch the vehicle's metal roof.



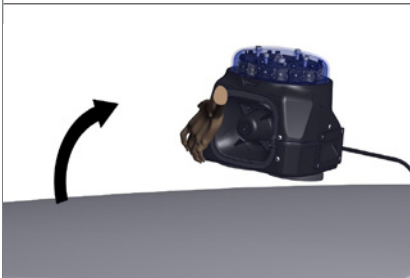
### STEP 3

To properly install the TornadoXS, you should position it above the B-pillar and make sure that the speaker is facing the direction of travel. It's important that you attach it as close to the centre of the roof as possible and avoid any grooves. Additionally, make sure that the light output is emitted horizontally and evenly in all directions. Finally, ensure that the magnets are in full contact with the roof to ensure a secure installation.



### STEP 4

To use the device, please ensure that the cable is placed in front of the cigarette lighter and is secured in a way that does not hinder the driver. Also, make sure that the plug is firmly seated in the cigarette lighter. You can operate the device using the switches on the Linx4. While driving, it's important to pay attention to the speed limit and wind pressure from oncoming vehicles.



### STEP 5

To remove the unit, apply a levering action to the underneath section of a single side to detach a single magnet. The remaining magnet will then be more easily removed.

## General information

*(Please also note the vehicle manufacturer's instructions)*

- ▶ The TornadoXS is only suitable for vehicles with a metal roof (no glass or plastic roofs).
- ▶ The TornadoXS is only suitable for flat roofs with a smooth surface (without grooves) and a curvature radius no greater than 3000mm.
- ▶ Do not place the TornadoXS on any strongly curved areas of the vehicle roof, cracks, grooves, seams, or on the edge of a sunroof.
- ▶ Ensure the magnets and roof surface area are free from dust and grease with a damp cloth. The bottom of the magnets is provided with a rubberised coating to ensure no damage to the mating surface.
- ▶ Only place the TornadoXS on a dry roof surface; in sub-zero temperatures, remove any ice formation under the magnetic plate

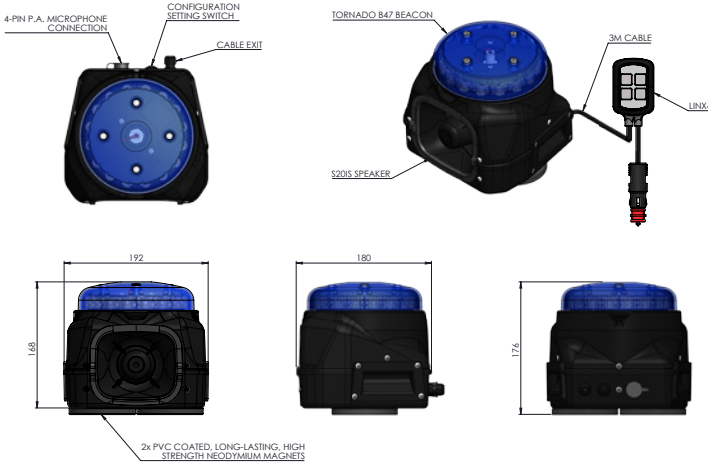
## Operating manual

- ▶ Clean the vehicle roof, see general information.
- ▶ Clean the TXS and make sure that no metal parts have accumulated on the magnets during storage (avoiding unnecessary scratching of the roof).
- ▶ Position the unit above the vehicle B-pillar (centrally) with the speaker facing the direction of travel (pay attention to any ridge/grooves in the vehicle roof).
- ▶ The blue light must be able to emit horizontally and evenly in all directions. Make sure that the magnets are in full contact with the vehicle roof surface.
- ▶ Position the power cable in a way in which it cannot accidentally detach the cigarette plug from the socket. The cable must not hinder the driver.
- ▶ Check whether the plug is firmly seated in the cigarette socket. Operation via the switch on the plug.
- ▶ While driving, pay attention to the permissible speed limit and the wind pressure from oncoming vehicles.

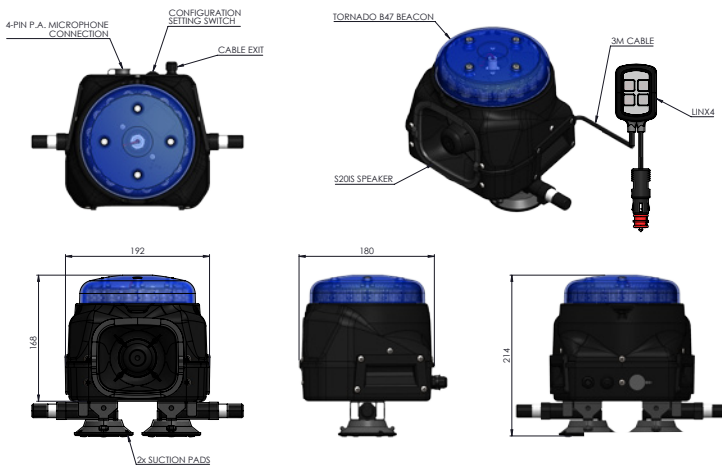


## Product Drawings

### MAGNET MOUNT

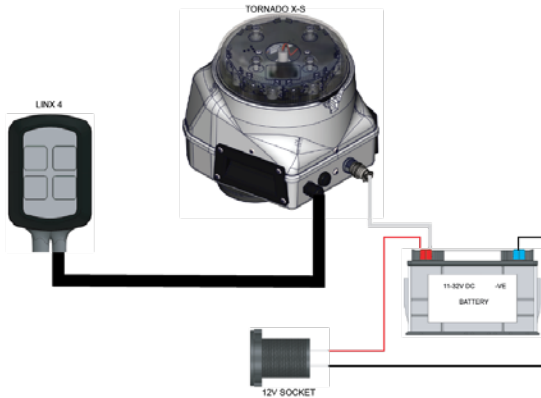


### SUCTION MOUNT (The suction mount is only available as an optional upgrade kit)

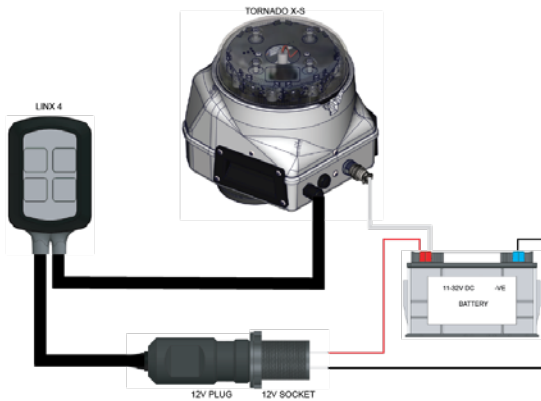


## TORNADOXS SETUP GUIDE

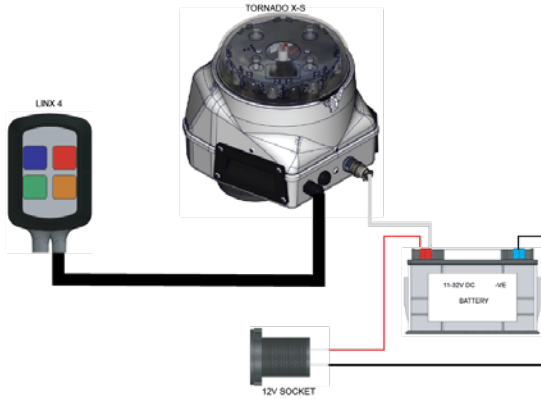
**STEP 1** Connect the white PA wire to power (+ve). This will stop the siren from triggering.



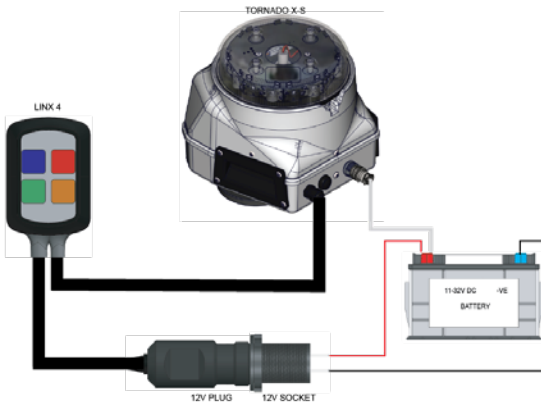
**STEP 2** Set up Linx 4, hold down button 1 & 2 and then connect to power. The siren will sound. Refer to M036 Linx4 installation guide for full instructions. Buttons need to be set to 1= Blue 2= Red 3= Green 4= Amber.



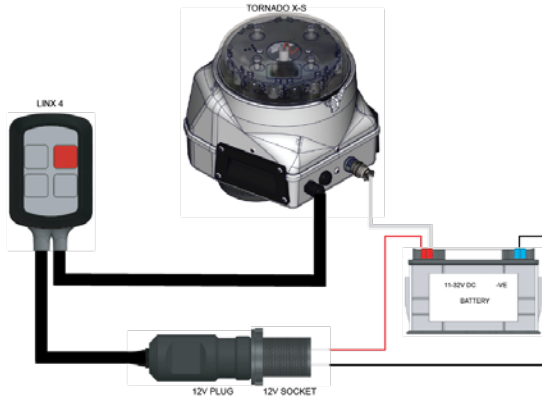
**STEP 3** Remove power cable, leave the white wire connected to power (+VE)



**STEP 4** Connect power lead to power and unit will sound 4 beeps (program mode activated)

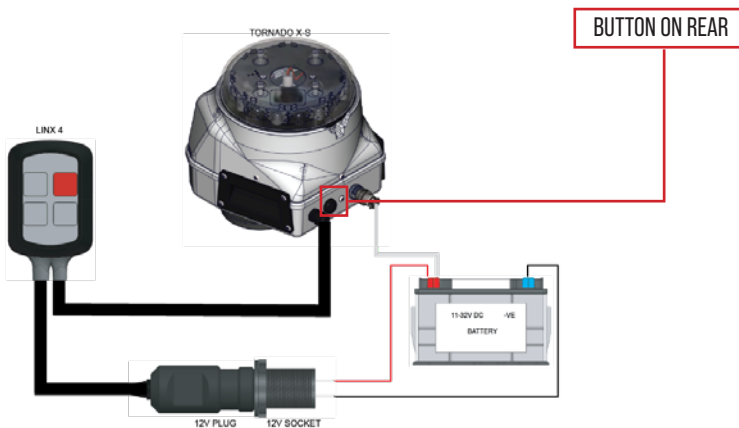


**STEP 5** Hold down button 2 (red) on Linx4, this may be set to latch or momentary.

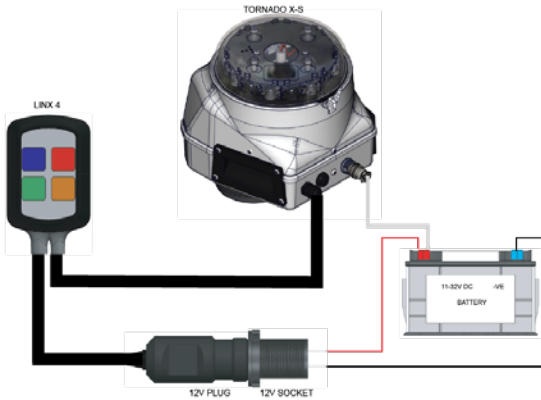


	UK/ INTERNATIONAL	CYPRUS	GERMANY	AUSTRIA	NETHERLANDS	FRANCE	ITALY	FINLAND	NORWAY	BELGIUM
FLAG										
BEEPS	1	2	3	4	5	6	7	8	9	10

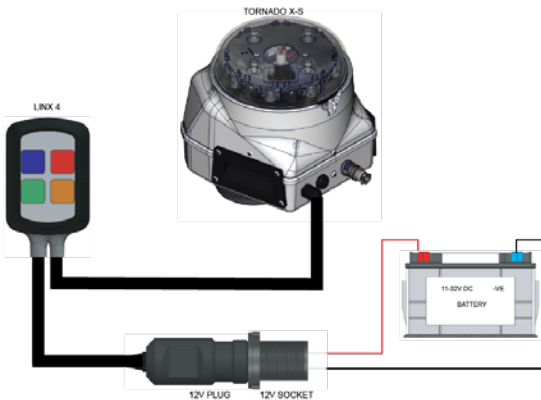
**STEP 6** Press button on rear of unit for country select  
*(for more detail refer to M013: S20IS siren user manual)*



**STEP 7** Release switch 2 (red) on Linx 4. Check keypad colours and button type (latch or momentary) are correct, if not then reset {see M036: Linx4 installation guide}



**STEP 8** Remove white wire from power. The button on rear may have changed the beacon pattern. Press button until correct pattern is selected. The unit is to leave the factory with double flash pattern.





## Warranty and Liability

Redtronic warrants that on the date of purchase, this product will conform to Redtronic specifications for this product (which are available from Redtronic upon request). This product benefits from a 3 year warranty from the date of purchase. Please refer to our standard terms & conditions and limited warranty for any further information.

**Please Note:** As this is a temporary mounted product, the cigarette plug, cable, magnets and enclosure are all at risk of damage through misuse and/or wear and tear and therefore are not included in the overall product warranty. Spare parts can be ordered separately.

## Optional Extra Accessories

	<p>SP_EM173L2</p>	<p>SPARE PART SAFETY LANYARD (BALL VERSION) PAIR (1000MM)</p>
	<p>SP_TRXCB</p>	<p>TornadoXS CARRY BAG</p>

## Spare Parts

SP_TB47LENFT_C	SPARE - TORNADO B47 DOME LENS [CLEAR]
SP_TB47LENFT_B	SPARE - TORNADO B47 DOME LENS [BLUE]
SP_TB47LENFT_A	SPARE - TORNADO B47 DOME LENS [AMBER]
S20IS	NEODYMIUM 20W SPEAKER W/INTEGRATED SIREN (MULTI TONE)
SP_EM102RFSS48KG	SPARE - 90MM SUPER STRENGTH MAGNETS [X1]
SP_EM173SC75	SPARE - SUCTION/VACUUM CUP (75MM) WITH HAND PLUNGER
SP_EM173CGD	SPARE - DOUBLE SWITCH CIG PLUG [L/M] - STRAIGHT
SP_EM173CGD4	SPARE - DOUBLE SWITCH CIG PLUG [L/L] - 4.2M STRAIGHT
LINX4-BC	LINX4 UNIVERSAL CONTROLLER (WITH CIG PLUG)
SP_EM60WD-N4	EM60WD MICROPHONE WITH CURLY CORD & 4 PIN CONNECTOR
SP_EM60WD-5MN4	5 METRE EXTENSION LEAD FOR MICROPHONE - 4 PIN XLR CONNECTOR

### MAKE SURE CLEANING AGENTS ARE FULLY RINSED OFF:

If you choose to use a cleaning agent, it is imperative that it is fully cleaned away and is not left in either droplet or film form. The longer a chemical agent is left in contact with polycarbonate, the increased possibility that it will damage it.

### WATER TEMPERATURE IS IMPORTANT:

For completely sealed units, it is not recommended to either immerse the product in water above 60 °C or in steam. It is highly likely that using water above a temperature of 60 °C will affect the chemical bond and composition of the plastic, resulting in deformation or stress cracking, potentially resulting in total failure. The higher the temperature of the water used will shorten the lifetime of the polycarbonate.

### FOR HARD TO REMOVE OIL AND GREASE:

Surfaces soiled with lubricants like oil and grease are best cleaned with suitable solvents at room temperature and with short exposure times. These include: gasoline fractions free of aromatics (e. g. petroleum-ether, ligroin, white spirit), alcohols (ethyl, n-propyl, isopropyl, butyl and isobutyl)-alcohol, but not methyl alcohol).

### HERE'S A BASIC OVERVIEW OF THE TEST:

Test: High pressure steam cleaning

Gen. ISO 20653 (2013-02): IPX9K

Parameters: Distance of the nozzle to the test specimen: 100-150mm

Water flow rate: 15l / min

Water pressure: 100 bar

Water temperature: 80 °C

Speed test table: 5U / min

Spray angle: 0°, 30°, 60°, 90°

Number of cycles: 1

Test conditions: **The candidate is not in electrical operation**

