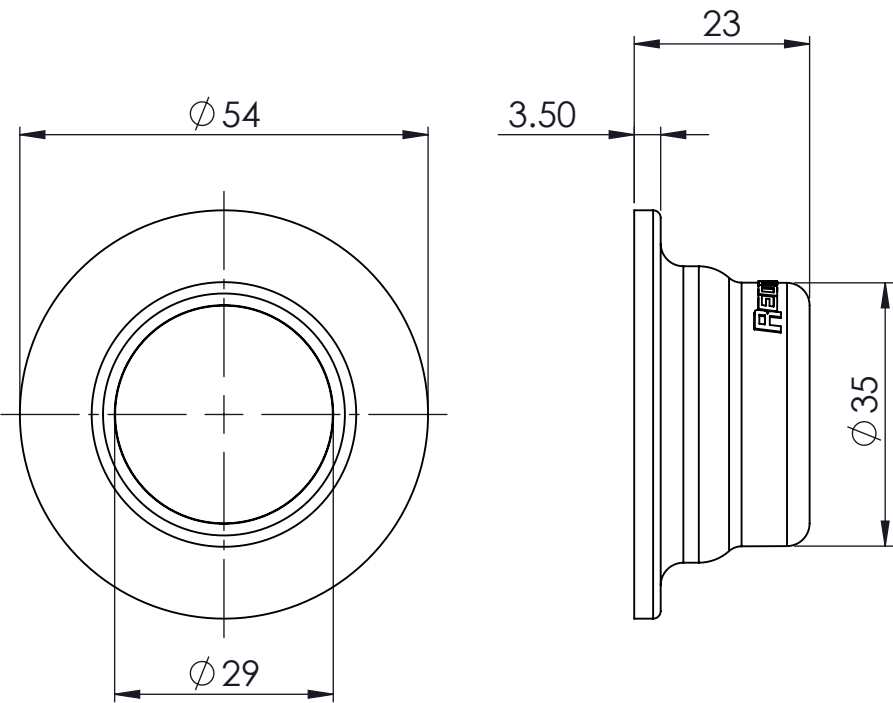


1. FEED BB4 CABLE THROUGH WINDOWPOD AND PUSH FIT INTO PLACE USING DOUBLE POP-LOCK

2. APPLY ADHESIVE PAD TO BB4 WINDOWPOD ASSEMBLY

3. REMOVE PROTECTIVE COVER FROM ADHESIVE PAD

4. CLEAN ATTACHMENT POINT ON WINDOW USING ALCOHOL WIPE PROVIDED  
5. ALLOW 10 SECONDS TO DRY  
6. IT IS RECOMMENDED THAT THE ATTACHMENT POINT IS WARMED USING APPROPRIATE EQUIPMENT (E.G. VEHICLE HVAC SYSTEM) FOR OPTIMAL ADHESION  
7. FIRMLY APPLY B4 WINDOWPOD TO WINDOW



THIS DRAWING IS CONFIDENTIAL AND IS THE EXCLUSIVE PROPERTY OF REDTRONIC LTD.  
NO UNAUTHORISED USE, COPY OR DISCLOSURE OF THE DRAWING IS TO BE MADE AND IT IS TO BE RETURNED WHENEVER REQUIRED.

PROJECTION  
IF IN DOUBT ASK  
A3

SCALE N/A  
Drawn By WJO  
DATE 23/09/2021  
WEIGHT -g

UNLESS STATED  
DIMENSIONS MM  
TOL. LINEAR ±0.3  
TOL. DIAGONAL ±0.5  
TOL. ANGULAR ±0.5

MATERIAL AS PARTS  
FINISH -

**REDTRONIC**  
VEHICLE WARNING AND SAFETY SOLUTIONS

Description  
BB4 WINDOWPOD INSTALLATION GUIDE

SHEET. 1 OF 1 | DWG NO BB4-WPD-INST | REV A