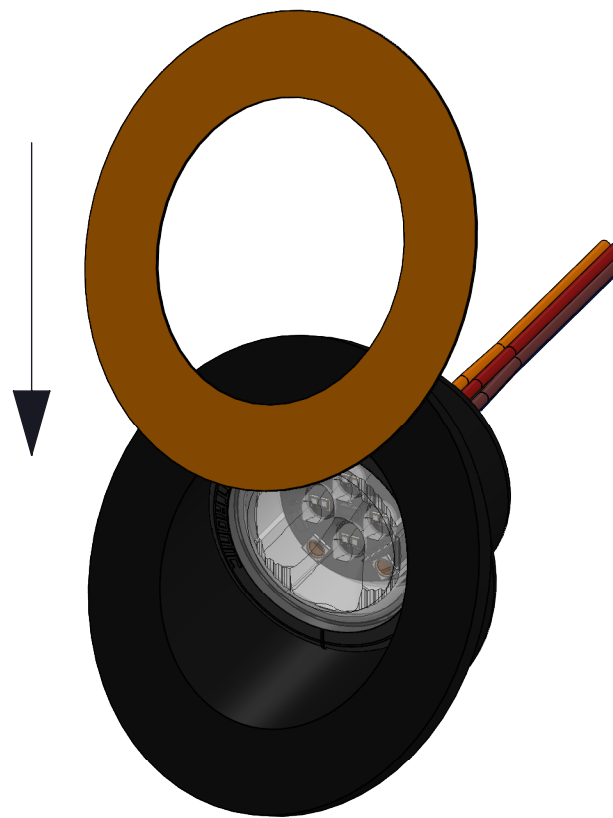
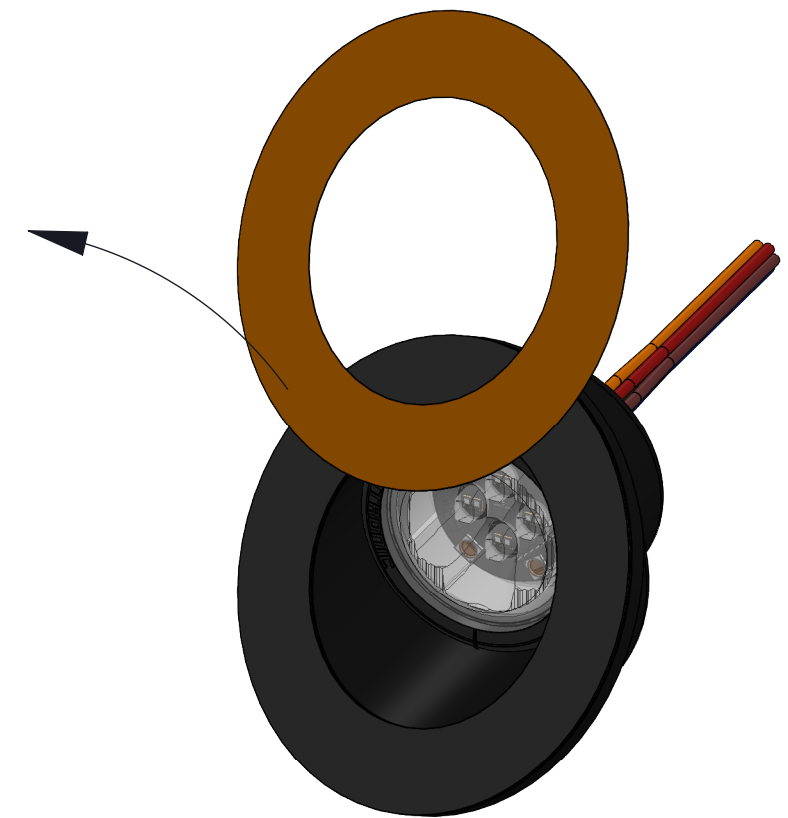


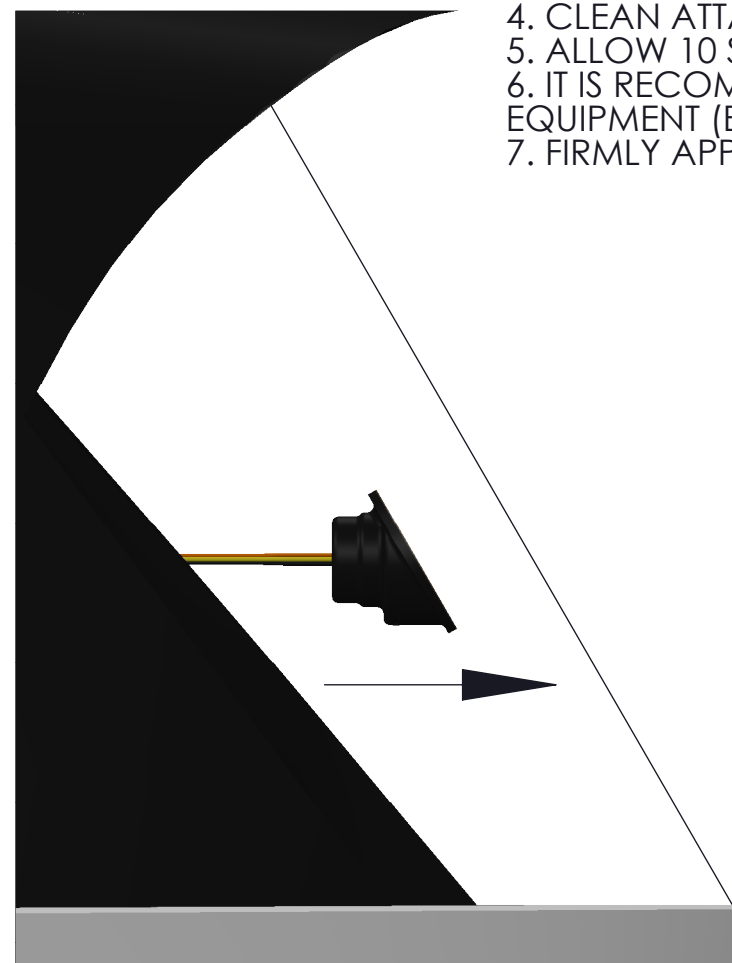
1. FEED BB4 CABLE THROUGH WINDOWPOD AND PUSH TO FIT IN PLACE USING DOUBLE POP-LOCK



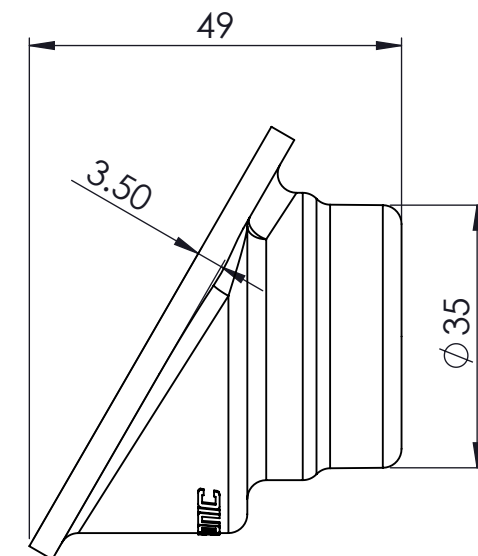
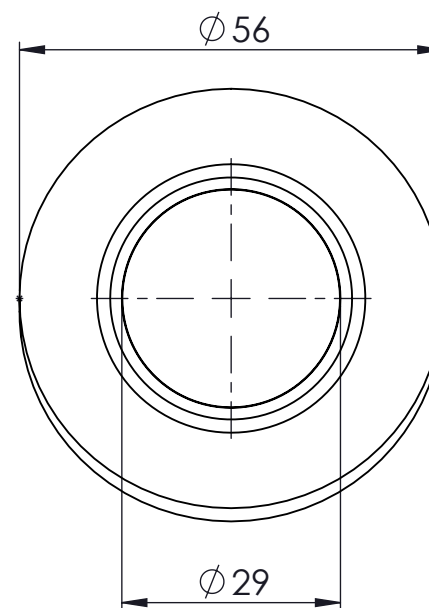
2. APPLY ADHESIVE PAD TO BB4 WINDOWPOD ASSEMBLY



3. REMOVE PROTECTIVE COVER FROM ADHESIVE PAD



4. CLEAN ATTACHMENT POINT ON WINDOW USING ALCOHOL WIPE PROVIDED
 5. ALLOW 10 SECONDS TO DRY
 6. IT IS RECOMMENDED THAT THE ATTACHMENT POINT IS WARMED USING APPROPRIATE EQUIPMENT (E.G. VEHICLE HVAC SYSTEM) FOR OPTIMAL ADHESION
 7. FIRMLY APPLY BB4 WINDOWPOD TO WINDOW



THIS DRAWING IS CONFIDENTIAL AND IS THE EXCLUSIVE PROPERTY OF REDTRONIC LTD.
 NO UNAUTHORISED USE, COPY OR DISCLOSURE OF THE DRAWING IS TO BE MADE AND IT IS TO BE RETURNED WHENEVER REQUIRED.

PROJECTION
 IF IN DOUBT ASK
 A3

SCALE N/A
 DrawnBy WJO
 DATE 23/09/2021
 WEIGHT -g

UNLESS STATED
 DIMENSIONS MM
 TOL. LINEAR ± 0.3
 TOL. DIAGONAL ± 0.5
 TOL. ANGULAR ± 0.5

MATERIAL AS PARTS
 FINISH -

REDTRONIC
 VEHICLE WARNING AND SAFETY SOLUTIONS
 Description
 BB4 WINDOWPOD INSTALLATION GUIDE
 SHEET. 1 OF 1 DWG NO BB4-WPD-INST REV A