

REDTRONIC

VEHICLE WARNING AND SAFETY SOLUTIONS



EMERGENCY SERVICES SOLUTIONS

- // POLICE
- // FIRE
- // AMBULANCE
- // COVERT

WWW.REDTRONIC.CO.UK

MANUFACTURED IN THE
UNITED KINGDOM





OUR FACILITIES

// UNIT 9
LIGHTBAR ASSEMBLY, SMD PLACEMENT,
RESIN DISPENSING & ENGINEERING

// UNIT 1-4
LIGHTBAR ASSEMBLY, ACCOUNTS & QA

// UNIT 10
SALES, MARKETING & SERVICE

// UNIT 7
R&D, TEST & STORES

LED BY INNOVATION

We believe that innovation from concept to completion is the key to success, and we have made it our mission to deliver exactly that. Our UK-based facilities are where our products are manufactured, so you can trust that you're getting the best quality possible.

OUR PRODUCTS



Redtronic has various product brands within our product portfolio. We think differently to others, and develop high quality, distinctive products, so we can offer you a range of LED lighting solutions that can be customised to your specific needs.

OUR SERVICE



Our facilities are located in West Yorkshire, UK, where our products are manufactured from start to finish. Our capabilities include the full design and production process and include in-house testing to guarantee quality.

OUR ENGINEERS



We have a team of highly skilled engineers who have years of experience in the industry including dedicated designers, assembly specialists and LED technical experts.

Our facilities are located in the UK where our products are manufactured from start to finish by people who are passionate about quality and our shared vision to help save lives.



LIGHTBARS	5 - 8
TRAFFIC DIRECTORS	8
DIRECTIONALS & DASHMOUNTS	9 - 14
STEALTH PLATE	15
TESTING FACILITIES	16
MICROBARS & BEACONS	17 - 18
CONTROLLERS	19
SIRENS & SPEAKERS.....	20
COMBINATION PRODUCTS.....	21 - 22
WORKLAMPS & SCENE LIGHTS	23 - 24



A RANGE FOR ALL APPLICATIONS

MARKED SOLUTIONS

DIRECTIONALS
WIDE ANGLE & HIGH INTENSITY

LIGHTBARS
FULL 360 VISIBILITY,
MULTIPLE OPTIONS

**DISCRETE
MINIATURE
LIGHTS**
ADDITIONAL
WARNING SIGNALS



**INNOVATIVE
HIDDEN
SOLUTIONS**
LEADING THE MARKET

**DASH & DECK
MOUNTS**
TEMPORARY OR
PERMANENT

**SIRENS &
SPEAKERS**
POWERFUL, QUICK &
EASY TO INSTALL

As a leading supplier of lightbars, directionals, sirens, beacons & combination products to the Emergency Services, we ensure enhanced safety and efficiency on the road.

Our high quality equipment is available for a wide range of police vehicles, including high specification traffic cars, area cars, dog vans, prisoner transport vans, and motorcycles.

Trust Redtronic to provide you with reliable and industry-leading solutions for all your law enforcement needs.



COVERT SOLUTIONS

HIGHLY COVERT DIRECTIONALS

MARKET LEADING
INNOVATIVE CONCEPTS

MULTIPLE SHROUDS FOR DIRECTIONALS

CUSTOMISED OPTIONS

DIRECTIONALS WITH TINTED LENSES

ECE R65 COMPLIANT

DISCRETE & SELF CONTAINED CONTROL SYSTEMS

HIDDEN FROM SIGHT

DISCRETE MINIATURE LIGHTS

ADDITIONAL WARNING
SIGNALS



LOOK OUT FOR THIS SYMBOL FOR PRODUCTS THAT ARE
IDEAL FOR COVERT APPLICATIONS

Innovative, robust solutions for emergency and response vehicles.

The latest technology from Redtronic has revolutionised the way we can approach
vehicle safety with our range of covert warning lights.

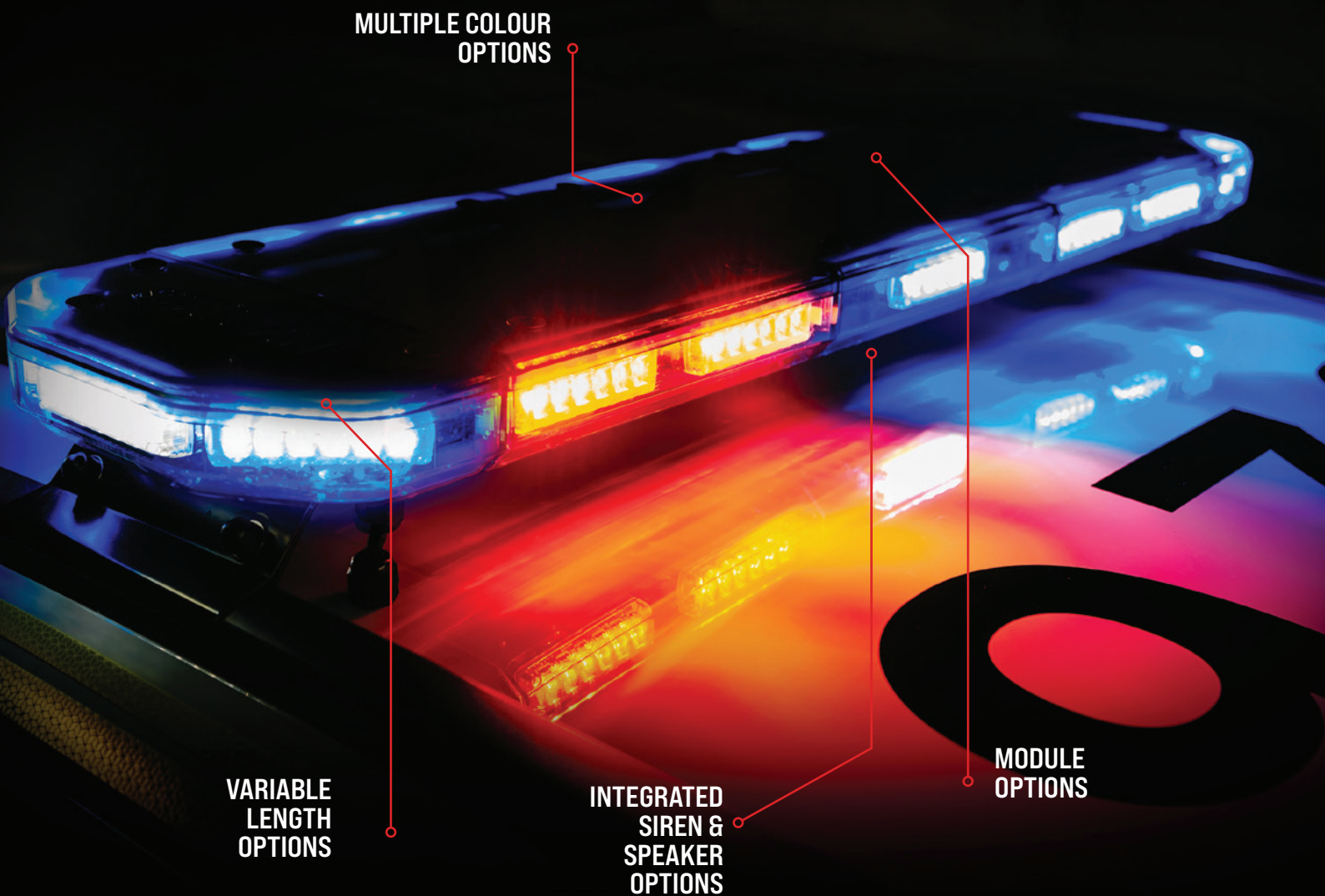
With configurable tint kits & product specific mounting options. These cutting-
edge solutions are designed to provide a discreet solution without compromising
visibility, quality or functionality.



MANUFACTURED IN THE
UNITED KINGDOM

+44 (0)1422 310999 // INFO@REDTRONIC.CO.UK // WWW.REDTRONIC.CO.UK

LIGHTBAR SOLUTIONS



MULTIPLE COLOUR
OPTIONS

VARIABLE
LENGTH
OPTIONS

INTEGRATED
SIREN &
SPEAKER
OPTIONS

MODULE
OPTIONS

Our range of lightbars are powerful warning devices suitable for both the Emergency & Amber Safety markets offering a wide range of customisation for high speed pursuit police vehicles.

Designed for tough environments and backed with rigorous testing, rest assured these powerful lightbars are high performance and built to last. Each lightbar is built specifically to a customer's specification allowing maximum flexibility and bespoke design.

Our range of lightbars are designed, configured & manufactured all within our West Yorkshire based facilities.

LIGHTBARS // SPARTAN

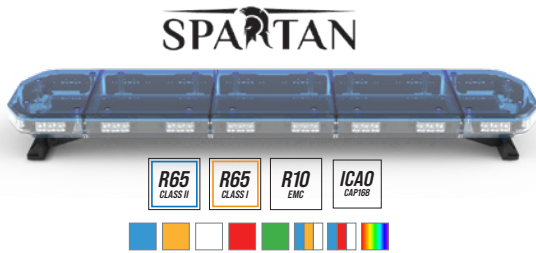
SPARTAN



CONFIGURED BY YOU // DELIVERED BY US

 SELECT YOUR LENGTH	 SELECT YOUR MODEL	 SELECT YOUR LED COLOUR	 SELECT YOUR LENS COLOUR	 SELECT YOUR FEATURES	 SELECT YOUR MOUNTING OPTIONS
----------------------------------	---------------------------------	--------------------------------------	---------------------------------------	------------------------------------	--------------------------------------------

The Spartan Lightbar comes with multiple options of length, mount and wiring connections to make installation across any vehicle type possible. To cover all global requirements the Spartan lightbar can be configured with a comprehensive list of features including Stop Tail Turns, Work/Take-down/Alley Lights, Central illumination with signage, built in traffic director and even built in speaker/siren option.



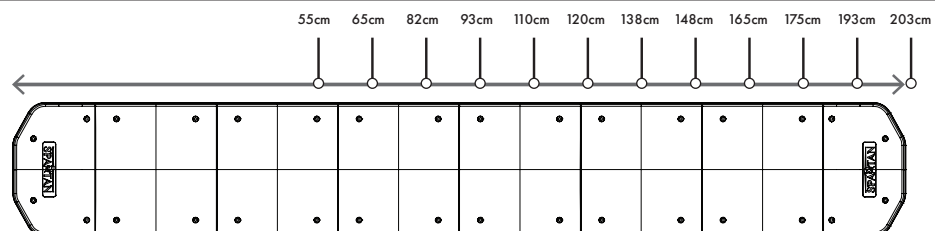
- 12 lengths available
- All emergency & safety colours available
- High quality toughened & UV stabilised polycarbonate lenses
- Single or Tri Colour
- Various additional options and mountings available
- Various flash patterns (including CAP168/ICAO airport)
- 5 year warranty

- Flashing or Steady burn Models
- 12 lengths available
- All emergency & safety colours available
- High quality toughened & UV stabilised polycarbonate lenses
- Single or Dual Colour
- Various additional options and mountings available
- 5 year warranty

MODULE OPTIONS:	LED ALLEY LIGHTS, REAR REDS, WORKLAMPS, FLOOD LAMPS, STOP TAIL TURN, INDICATORS, CENTRE ILLUMINATION, TAKEDOWNS, STEADY BURN SINGLE GATSO (BLUE)
FEATURES:	TRAFFIC DIRECTOR, INTERNAL SPEAKER / SIREN / PA
LENGTH OPTIONS:	55CM TO 203CM
LENS COLOURS:	BLUE, AMBER, CLEAR, OPAL & BLACK
VOLTAGE:	11-32VDC
APPROVALS:	R65 CLASS II (BLUE) CLASS I (AMBER), EMC R10, CAP168/ICAO, IP54 (IP69K RATED INTERNAL LED MODULES)
WARRANTY:	5 YEAR WARRANTY

MODULE OPTIONS:	LED ALLEY LIGHTS, REAR REDS, WORKLAMPS, FLOOD LAMPS, STOP TAIL TURN, INDICATORS, CENTRE ILLUMINATION, TAKEDOWNS, STEADY BURN SINGLE GATSO (BLUE)
FEATURES:	TRAFFIC DIRECTOR, INTERNAL SPEAKER / SIREN / PA
LENGTH OPTIONS:	55CM TO 203CM
LENS COLOURS:	BLUE, AMBER, CLEAR, OPAL & BLACK
VOLTAGE:	11-32VDC
APPROVALS:	R65 CLASS II (BLUE) CLASS I (AMBER), EMC R10, CAP168/ICAO, IP54 (IP69K RATED INTERNAL LED MODULES)
WARRANTY:	5 YEAR WARRANTY

DID YOU KNOW THAT THE SPARTAN IS AVAILABLE IN MULTIPLE LENGTH OPTIONS?



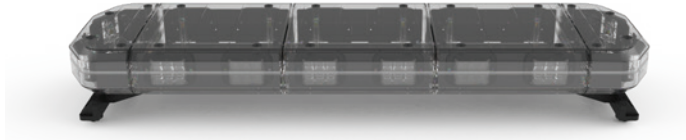


LIGHTBARS // DSFX

With its cutting-edge dynamic shape design, this industry-first innovation sets a new standard for sleekness and functionality. Engineered to minimize wind drag, the Bullitt Lightbar minimises resistance to wind drag that results in minimal impact on fuel consumption.

LIGHTBARS // DSFX

When a big presence is required



DSFX



- 10 lengths available
- All emergency & safety colours available
- Aerodynamic Shape significantly reduces wind drag which maximises fuel efficiency
- 4mm Ultra-strong UV stabilised polycarbonate lens
- Single, tri and multi colour
- Various additional options and mountings available
- Various flash patterns (including CAP168/ICAO airport)
- 5 year warranty

RANGE OF FOOTPACKS - see page 8

MODULE OPTIONS:	LED ALLEY LIGHTS, REAR REDS, WORKLAMPS, FLOOD LAMPS, STOP TAIL TURN, INDICATORS, TAKEDOWNS, STEADY BURN SINGLE GATSO (BLUE)
FEATURES:	360° WHITE LIGHT, CRUISE LIGHTS, TRAFFIC DIRECTOR, INTERNAL SPEAKER / SIREN / PA, FLEXI-FLASH, 9 PROGRAMMABLE INPUTS, NIGHT & DAY (DIM MODE), R65 MONITOR OUTPUT
LENGTH OPTIONS:	55CM TO 193CM
LENS COLOURS:	AMBER, BLUE, CLEAR
VOLTAGE:	11-32VDC
APPROVALS:	R65 CLASS II (AMBER AND BLUE), EMC R10, CAP168/ICAO, IP6K
WARRANTY:	5 YEAR WARRANTY



BULLITT ADVANCED



- 10 lengths available
- All emergency & safety colours available
- Aerodynamic Shape significantly reduces wind drag which maximises fuel efficiency
- 4mm Ultra-strong UV stabilised polycarbonate lens
- Single, tri and multi colour
- Various additional options and mountings available
- Various flash patterns (including CAP168/ICAO airport)
- 5 year warranty

RANGE OF FOOTPACKS - see page 8

MODULE OPTIONS:	LED ALLEY LIGHTS, REAR REDS, WORKLAMPS, FLOOD LAMPS, STOP TAIL TURN, INDICATORS, TAKEDOWNS, STEADY BURN SINGLE GATSO (BLUE)
FEATURES:	ROTATING FLASH PATTERN, 360° WHITE LIGHT, CRUISE LIGHTS, TRAFFIC DIRECTOR, FLEXI-FLASH, 9 PROGRAMMABLE INPUTS, NIGHT & DAY (DIM MODE), R65 MONITOR OUTPUT, AERODYNAMIC DRAG 1.45MPG
LENGTH OPTIONS:	55CM TO 204CM
LENS COLOURS:	AMBER, BLUE, CLEAR (CLEAR BOTTOM LENS ONLY)
VOLTAGE:	11-32VDC
APPROVALS:	R65 CLASS II (AMBER AND BLUE), EMC R10, CAP168/ICAO, IP6K
WARRANTY:	5 YEAR WARRANTY



LIGHTBARS // FOOTPACKS

Compatible with Spartan, Spartan Elite, Bulliit and DSFX lightbars.



EM108UF - UNIVERSAL FOOTPACK (STANDARD)



EM102SC - SUCTION MOUNT



EM102RFSS - MAGNETIC MOUNT



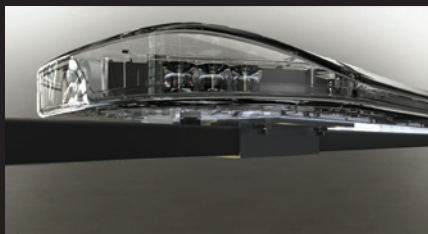
EM108RRB - ROOF RAIL BRACKETS



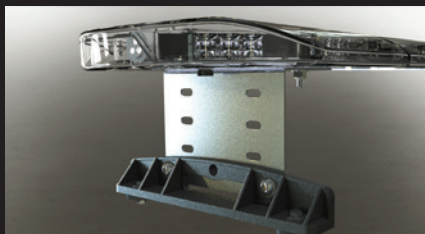
EM108GMUF - GUTTER MOUNTS



EM108RRC - ROOF RAIL CLAMPS



EM108RBB - ROOF BAR BRACKETS



EM108UHP - HIGH PROFILE BRACKETS



EM108RBC - ROLL BAR CLAMPS

TRAFFIC DIRECTOR // WARNING BAR



TRAFFIC DIRECTOR



- 6 Lengths available
- All emergency & safety colours available#
- Ultra-strong UV stabilised polycarbonate lens
- Single, dual and multi-colour models available
- Slim traffic director profile
- Colourless when not illuminated
- Anodised aluminium enclosure
- Multiple unit synchronisation
- IP69K protection against dust & water ingress
- Night & day (dim mode)
- All controls inbuilt & supplied with multi core cable
- Various additional options and mountings available
- Various flash patterns (including CAP168/ICAO airport)
- 2 year warranty

FEATURES: INBUILT TRAFFIC DIRECTOR FUNCTIONALITY: ARROW LEFT, ARROW RIGHT AND CENTRE OUT, REAR REDS, STEADY BURN GATSO (BLUE), CRUISE LIGHTS, FLEXI-FLASH

LENGTH OPTIONS: 28.2CM, 55.2CM, 82.3CM, 109.3CM, 136.4CM, 163.4CM X W 6.5CM X 3.6CM

LENS COLOURS: AMBER, BLUE, CLEAR (CLEAR BOTTOM LENS ONLY)

VOLTAGE: 11-32VDC

APPROVALS: R65 CLASS II (AMBER AND BLUE), EMC R10, CAP168/ICAO, IP6K

WARRANTY: 2 YEAR WARRANTY

DIRECTIONALS

Directional LED solutions are designed to fit all your application needs, from safety/commercial vehicles to emergency services and covert vehicles. Our directional range meets all of the major industry requirements from IP69K for the toughest environments, EMC R10, ECE R65 approvals, with 7 flash patterns including ICAO/CAP168 Airport pattern. The directional range boasts Sync capability with other Redtronic products and is manufactured in the UK.

- SURFACE & RECESS MOUNT OPTIONS
- MULTIPLE FLASH PATTERNS
- SIMULTANEOUS, ALTERNATE & X-FLASH OPTIONS
- SINGLE, DUAL, TRI, QUAD & MULTI-COLOUR OPTIONS
- FLASHING & STEADY BURN
- SYNCHRONISATION ACROSS PRODUCT RANGE
- BRACKETS, SHROUDS & RUBBERISED POD MOUNTING OPTIONS
- UNIFORM CABLE COLOURS & FEATURES

SEE THE FULL DIRECTIONAL RANGE ON OUR WEBSITE
WWW.REDTRONIC.CO.UK

DIRECTIONALS // BULLITT RANGE

The BX Bullitt range are versatile directional LEDs that are perfect for any vehicle and any job. With 4 size profiles, including 2 double stacked LED variants, you can find the perfect fit for your needs.

Designed with premium features and quality in mind, BX Bullitt Directional LEDs offer single colour, tri-colour, and multi-colour options. Choose from two bezel colours - black or white - to match the most common colours of vehicles, from emergency vehicles to amber safety/commercial vehicles.



BULLITT - BX Directional LED Key Features



- Black or white bezel
- Single, tri or multi colour
- Sleek, High Performance Single or Double Stack LED options
- Colourless when not illuminated
- IP69K protection against dust & water ingress
- ECER65 Blue & Amber
- EMC / R10 compliant
- Various flash patterns (including CAP168/ICAO airport)
- Multiple unit synchronisation
- Cruise feature available
- Mounting: 2 screw or L-bracket (optional)
- 2 year warranty



	98(L) x 40(H) x 24(D)	98(L) x 63(H) x 24(D)	163(L) x 40(H) x 24(D)	163(L) x 63(H) x 24(D)
Dimensions (mm)	98(L) x 40(H) x 24(D)	98(L) x 63(H) x 24(D)	163(L) x 40(H) x 24(D)	163(L) x 63(H) x 24(D)
Voltage	11-30VDC	11-30VDC	11-30VDC	11-30VDC
Amps	@12VDC: 500mA	@12VDC: 1 amp	@12VDC: 1 amp	@12VDC: 2 amp
LED Power	single (9w), tri (27w), multi (27w)	single (16w), tri (54w), multi (54w)	single (18w), tri (54w), multi (54w)	single (36w), tri (108w), multi (108w)

FX DASH MOUNT



- LED directional in shroud dash housing
- Colourless when not illuminated
- R65 class I (amber) class II (blue) approved
- EMC R10 compliant
- Night & day (dim mode)
- 10 flash patterns
- Multiple unit synchronisation
- Warranty: 2 years



Dimensions (mm)	166(L) x 115(W) x 96(D)
Voltage	11-32V DC
Amps	@12VDC: 700-900mA
Ideal for	Dash & rear window





QUAD COLOUR DIRECTIONAL LED WITH BUILT-IN DOWNLIGHT



INFINITY STX



- Designed for the toughest environments
- Single, Dual or Quad Colour
- Optional built-in downlight
- Simple installation
- Hybrid material (including acrylic, polycarbonate and silicone)
- Black heatsink body
- Rear airflow vents to eliminate condensation issues
- ECER65 Class II Blue & Amber
- IP69K Dust & Water resistant
- Various flash patterns (including CAP168/ICAO airport)
- 5 year warranty

Dimensions (mm)	131(W) x 20(D) x 46(W)
Voltage	11-32V DC
Amps	900mA at 12VDC
Ideal for	Tough environments



Redtronic's Infinity STX is an industry first quad-colour directional LED with in-built downlight. Whilst the STX is available with either single, dual or quad colour high intensity flashing light, one of the main benefits is the optional integrated downlight which for many applications reduces the requirement of requiring a scene or work light on the vehicle.

The STX features a black heatsink body along with airflow vents on the rear to manage heat transfer and eliminate condensation issues. The lamp is designed for the toughest environments.



BOOK A DEMONSTRATION

Are you looking to learn more about our innovative product range? Look no further! Our team offers hands-on and informative demonstrations, anytime, anywhere.



DIRECTIONALS // INFINITY RANGE

We've got a solution for all your directional lighting needs! Our directional LED solutions are designed to meet all of your application needs, from commercial vehicles to emergency services and covert vehicles.



INFINITY BB4

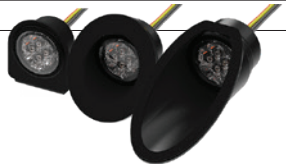
- Recess mount
- Single or Dual Colour
- Simple installation via pop-lock grommet
- Bespoke shrouds available
- Vinyl tint kit available
- ECER65 Class I Blue & Amber
- IP69K Dust & Water resistant
- Various flash patterns (including CAP168/ICAO airport)
- 3 year warranty



Dimensions (mm)	34(Ø) x 22(D)
Voltage	11-32V DC
Amps	630mA at 12VDC
Ideal for	Grilles, Marked, Covert



Mounting Shroud Options



INFINITY US6

- Ultra slim design
- Surface mount
- Horizontal mounting applications
- Single or Tri Colour
- Bespoke shrouds & pods available
- Vinyl tint kit available
- ECER65 Class II Blue & Amber
- IP69K Dust & Water resistant
- Various flash patterns (including CAP168/ICAO airport)
- 3 year warranty



Dimensions (mm)	118(W) x 13.4(D) x 13.6(W)
Voltage	11-32V DC
Amps	600mA at 12VDC
Ideal for	Grilles, Marked, Covert



Mounting Shroud Options

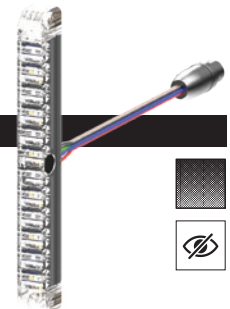


INFINITY NV6

- Ultra slim design
- Surface mount
- Vertical mounting applications
- Single or Tri Colour
- Bespoke shrouds & pods available
- Vinyl tint kit available
- ECER65 Class II Blue & Amber
- IP69K Dust & Water resistant
- Various flash patterns (including CAP168/ICAO airport)
- 3 year warranty



Dimensions (mm)	120(W) x 13.4(D) x 13.4(W)
Voltage	11-32V DC
Amps	600mA at 12VDC
Ideal for	Grilles, Marked, Covert



Mounting Shroud/ Pod



VINYL TINT KITS

Vinyl tint kits are available for some of our covert style directionals to help ensure they are not visible when inactive. The vinyl tint kit is supplied separately to the lamp and is applied prior to installation. Redtronic's Power Primer Surface Treatment wipes are used to guarantee a long lasting fixture to the lens. The vinyl also protects the lens from long term weathering or can be replaced for new if being fitted to multiple vehicles during it's lifetime.



LOOK OUT FOR THIS SYMBOL FOR COMPATIBLE PRODUCTS

DIRECTIONALS // STAR RANGE



THE IDEAL SOLUTION WHEN A DISCRETE
COVERT LIGHT IS REQUIRED



STAR-M1



- Unique miniature silicone design
- Covert & discrete applications
- Integrated inhibit feature (for wing mirror applications)
- Permanent illumination feature for GATSO light
- Bespoke shrouds available
- ECER65 Class I Blue
- IP69K Dust & Water resistant
- Various flash patterns (including CAP168/ICAO airport)
- 3 year warranty



Dimensions (mm)	23(Ø) x 10.7(D)
Voltage	12-24 VDC (nominal)
Amps	630mA at 12VDC
Ideal for	Wing mirrors, Marked, Covert



Mounting Shroud Options



STAR-M6



- Ultra-slim covert rubberised directional with tinted lens and vinyl kit
- Dual colour as standard
- Covert & discrete applications
- Flexible and adaptable to windscreen shape and curvature
- Swap cable exit via UBC-C connector
- ECER65 Class I Blue
- Various flash patterns (including CAP168/ICAO airport)
- 3 year warranty



Dimensions (mm)	107 (L) x 18.4 (H) x 58.4(D)
Voltage	11 – 32 VDC
Amps	300 mAmps (at 12v)
Ideal for	Marked, Covert



STAR-M18



- Ultra-slim covert rubberised directional with tinted lens and vinyl kit
- Dual colour as standard
- Covert & discrete applications
- Flexible and adaptable to windscreen shape and curvature
- Swap cable exit via UBC-C connector
- ECER65 Class I Blue
- Various flash patterns (including CAP168/ICAO airport)
- 3 year warranty



Dimensions (mm)	261.4(L) x 18.3 (H) x 58.5(D)
Voltage	11 – 32 VDC
Amps	300 mAmps (at 12v)
Ideal for	Marked, Covert



In order to protect the undetectable and covert purpose of these products Redtronic does not actively promote installed application images. Police forces should contact us direct for such images.

DIRECTIONALS // & DASH MOUNTS

We've got a solution for all your directional lighting needs! Our directional LED solutions are designed to meet all of your application needs, from commercial vehicles to emergency services and covert vehicles.



GECKO 3



- Ultra-strong UV stabilised polycarbonate lens
- Ultra-bright latest generation LED's Colourless when not illuminated
- Designed with a Gore-Tex vent for airflow
- Multiple mounting options
- ECER65 Class I Blue & Amber
- IP69K Dust & Water resistant
- Various flash patterns (including CAP168/ICAO airport)
- 2 year warranty

Dimensions (mm) 73.6(L) x 24(H) x 17.6(D)

Voltage 11-32V DC

Amps 500mA @12VDC

Marked, Covert, grille,



GECKO 6



- Ultra-strong UV stabilised polycarbonate lens
- Ultra-bright latest generation LED's Colourless when not illuminated
- Designed with a Gore-Tex vent for airflow
- Multiple mounting options
- ECER65 Class II Blue & Amber
- IP69K Dust & Water resistant
- Various flash patterns (including CAP168/ICAO airport)
- 2 year warranty

Dimensions (mm) 122.7(L) x 24(H) x 17.6(D)

Voltage 11-32V DC

Amps 700mA @12VDC

Ideal for Marked, Covert, grille,



GECKO DUO DASH MOUNT



- Ultra-strong UV stabilised polycarbonate lens
- Ultra-bright latest generation LED's Colourless when not illuminated
- Designed with a Gore-Tex vent for airflow
- Multiple mounting options
- ECER65 Class II Blue & Amber
- IP69K Dust & Water resistant
- Various flash patterns (including CAP168/ICAO airport)
- 2 year warranty

Dimensions (mm) 238.6(L) x 115(W) x 53.7(D)

Voltage 11-32V DC

Amps 1.4Amps @12VDC

Ideal for Marked, Covert



MICRO-LITE 4



- Ultra-Thin Discreet Covert Warning LED
- Single or Split Colour
- Available in split-colour (left/right)
- Bespoke shrouds available
- Vinyl tint kit available
- IP65
- Various flash patterns
- 2 year warranty



Dimensions (mm) 60(L) x 23(H) x 12(D)

Voltage 10-30V DC

Amps 400mA @12VDC

Ideal for Marked, Covert



MANUFACTURED IN THE UNITED KINGDOM

We manufacture these products right here in the UK—because we know that's important to our customers—and we pride ourselves on providing high-quality products across all our vehicle warning and safety solutions.



MANUFACTURED IN THE UNITED KINGDOM

AUXILIARY // STEALTH PLATE



INFINITY SP2

WORLD'S SLIMMEST, FLEXIBLE HYBRID
STEALTH PLATE

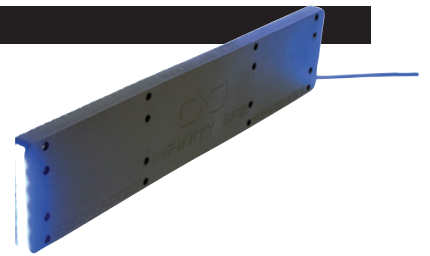
STEALTH PLATE

INFINITY SP2



- Unique flexible stealth plate design
- Single or Tri Colour
- Optional forward/rear facing directionals
- Directionals approved in horizontal & vertical positions
- ECER65 Class II Blue & Amber
- IP69K Dust & Water resistant
- Various flash patterns (including CAP168/ICAO airport)
- 3 year warranty

Dimensions (mm)	73.6(L) x 24(H) x 17.6(D)
Voltage	11-32V DC
Amps	500mA @12VDC
Ideal for	Marked, Covert, grille,



TESTING FACILITIES // REAL LIFE SCENARIOS

At Redtronic we test all of our products using our in-house test facilities to ensure they meet and exceed industry certification and standards. These chambers and tests simulate real world environments and expose our products to the harshest environments.



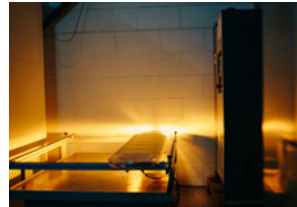
// WATER CHAMBER

Water tests verify the integrity of enclosures, covers and seals. The water chamber enables Redtronic to test to IP69K.



// HUMIDITY CHAMBER

The data generated by humidity testing can be important in planning materials selection, assembly of the product and expected lifetime.



// VIBRATION BENCH

The vibration bench is used to simulate the vibration impact that a vibrating vehicle in service might be subjected to.



// ACOUSTICS CHAMBER

Audible devices, primarily sirens, are tested in our acoustics chamber to ensure that they are providing the correct level of decibel output.



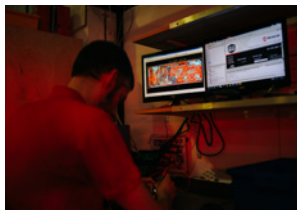
// DURABILITY TEST

Warning lights are regularly durability tested throughout each of the production processes, on average approximately five separate occasions.



// PHOTOMETRIC ROOM

The photometrics room is used to guarantee the lumen output of every product is consistent and inline with ECE R65 (and other) standards.



// ELECTRICAL TRANSIENT

Electrical transient testing comprises of inducing high voltages and currents into the electrical circuit to test the integrity and reliability of components.



// DUST CHAMBER

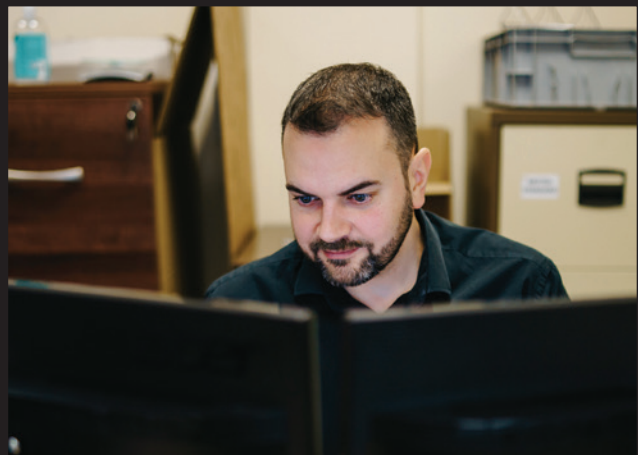
The dust chamber also allows us to provide customers accurate IP ratings relating to dust/dirt and particle ingress.

SERVICE // SUPPORT

Are you looking to learn more about our innovative product range? Look no further! Our team offers hands-on and informative demonstrations, anytime, anywhere.

With extensive knowledge of our product range we are happy to provide demonstrations to you and your customers at your premises.

We also invite you to visit us at our state-of-the-art facilities where you can see first-hand how our products are designed and manufactured. Book a demonstration today!



// GET IN TOUCH TO MAKE AN APPOINTMENT: +44(0)1422 310999 // HELPDESK@REDTRONIC.CO.UK



MANUFACTURED IN THE
UNITED KINGDOM

+44 (0)1422 310999 // INFO@REDTRONIC.CO.UK // WWW.REDTRONIC.CO.UK

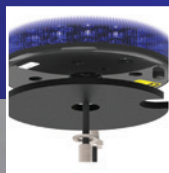
TORNADO MICROBAR & BEACONS

ROBUST,
COMPACT &
RELIABLE

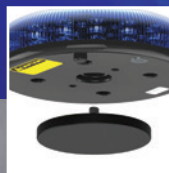
INTERNAL
ALUMINIUM
HEAT SINK

HIGH INTENSITY
LEDs & WIDE
ANGLE OPTICS

// MOUNTING OPTIONS



// BOLT



// MAGNETIC



// SUCTION



// POLE

Redtronic's Tornado range is designed to incorporate a sleek and modern design whilst providing the ultimate light output to meet R65 Class II in amber and blue. The Tornado range meet IP69K to protect against water and dust and features include CAP168/ICAO approval, multiple flash patterns and a variety of mounting options to meet most vehicle applications. With a built in auto dim sensor which will automatically reduce output in dark environments whilst still adhering to ECER65. Featuring ultra-bright latest generation LEDs under an ultra-strong, UV stabilised, fresnel polycarbonate lens offering multiple lens colour options and LED colours.



SEE THE TORNADO RANGE IN ACTION
WWW.REDTRONIC.CO.UK

BEACONS // HIGH INTENSITY BEACONS

The Tornado beacons are tough enough for any job, designed for a fit-and-forget purpose. Featuring ultra-bright latest generation LEDs under an ultra-strong, UV stabilised, fresnel polycarbonate lens offering multiple lens colour options and LED colours.



FORNADO
B47

TORNADO B47



- Ultra low-profile design
- Rotating flash patterns included
- Bolt, magnetic, suction & pole mounting options
- Auto dim sensor
- ECER65 Class II Blue & Amber
- CISPR25 Level 3
- IP69K Dust & Water resistant
- Various flash patterns (including CAP168/ICAO airport)
- Dekra speed tested
- 3 year warranty

Dimensions (mm)	47(H) x 154(D)
Voltage	11-32V DC
Amps	2.8 amps max at 12VDC, 1.4 amps max at 24VDC
Ideal for	Marked



FORNADO
B110

TORNADO B110



- Traditional design
- Rotating flash patterns included
- 1 or 3 Bolt, magnetic & flexi DIN mounting options
- Auto dim sensor
- ECER65 Class I Blue & Amber (model dependant)
- CISPR25 Level 3
- IP69K Dust & Water resistant
- Various flash patterns (including CAP168/ICAO airport)
- 3 year warranty

Dimensions (mm)	110(H) x 142(D)
Voltage	11-32V DC
Amps	2 amps max at 12VDC
Ideal for	Marked



FORNADO
B150

TORNADO B150



- Traditional design
- Rotating flash patterns included
- 1 or 3 Bolt, magnetic & flexi DIN mounting options
- Auto dim sensor
- ECER65 Class I & II Blue & Amber (model dependant)
- CISPR25 Level 3
- IP69K Dust & Water resistant
- Various flash patterns (including CAP168/ICAO airport)
- 3 year warranty

Dimensions (mm)	150(H) x 142(D)
Voltage	11-32V DC
Amps	2 amps max at 12VDC
Ideal for	Marked



MICROBAR // ROBUST LOW PROFILE

FORNADO
MICROBAR

TORNADO MICROBAR



- Ultra low-profile design
- 1 or 2 Bolt, magnetic, & suction mounting options
- Auto dim sensor available
- ECER65 Class II Blue & Amber
- IP69K Dust & Water resistant
- Various flash patterns including CAP168/ICAO airport
- Dekra speed tested
- 3 year warranty

Dimensions (mm)	255(L) x 179(W) x 47(D)
Voltage	11-32V DC
Amps	2.4 amps max at 12VDC
Ideal for	Marked



Available in a variety of mount options whether you require a permanent or temporary mount making it the perfect solution for a variety of vehicle applications from emergency services and covert vehicles to amber safety and commercial vehicles. Backed with IP69K, EMC R10, ECE R65 approvals and 7 flash patterns including ICAO/CAP168 airport pattern. It features ultra-bright latest generation LEDs under an ultra-strong UV stabilised polycarbonate lens offering multiple lens colour options and LED colours.



AUXILIARY // CONTROLLERS



**INSTALLATION MADE EASY.
ALL-IN-ONE INTEGRATED CONTROL KEYPAD**

CONTROLLERS // LINX RANGE

The LINX is an all-in-one integrated control keypad designed to provide simple installation and versatile control capabilities. It serves as a dynamic universal controller capable of switching various types of load applications, including resistive, inductive, and capacitive loads. Its primary purpose is to control Redtronic lighting and audible products, offering a convenient and centralized control solution.



linx4
UNIVERSAL CONTROLLER

LINX-4

- Discrete & sleek design
- 4 RGB Programmable switches
- Backlighting options
- Integrated intelligence in keypad enclosure
- Latching & momentary switches
- IP52 protection against dust & water ingress
- EMC R10 compliant
- Mounting brackets & various decals included
- 2 year warranty

Dimensions (mm) 76(L) x 54(W) x 22(D)

Voltage 12V or 24V DC

Power cable 1000mm (power & earth)



linx6
UNIVERSAL CONTROLLER

LINX-6

- Discrete & sleek design
- 6 RGB Programmable switches
- Backlighting options
- Integrated intelligence in keypad enclosure
- Latching & momentary switches
- IP52 protection against dust & water ingress
- EMC R10 compliant
- Mounting brackets & various decals included
- 2 year warranty

Dimensions (mm) 116(L) x 54(W) x 21 (D)

Voltage 12V or 24V DC

Power cable 3000mm (power & earth)



SIRENS // SPEAKERS

Our sirens and speakers are intelligent and user-friendly, offering a durable flexible solutions for your emergency warning needs.



S20IS

S20IS

- Compact all-in-one speaker siren
- Momentary & latching switch functions
- EMC / R10 compliant
- KBA german & UTAC French approved tones
- IP69K protection against dust & water
- 3 positive or negative triggers
- Latching/momentary tones available
- Audible sense / monitor output
- 2 year warranty

Dimensions (mm)	200(L) x 140(W) x 46 (H)
Voltage	11-16V DC and 20-30VDC
Amps	2.4 amps max at 12VDC
Impedance	2 Ohm
dB Output	110dB at 3.5m (Single unit)
Nominal power	20w Neodymium/speaker, 20w digital siren



S20ISPC

S20ISPC

- Compact all-in-one speaker siren
- Momentary & latching switch functions
- EMC / R10 compliant
- KBA german & UTAC French approved tones
- IP69K protection against dust & water
- 3 positive or negative triggers
- Latching/momentary tones available
- 1 m extension hose
- Audible sense / monitor output
- 2 year warranty

Dimensions (mm)	102.2x 83.7 (speaker)
Voltage	11-16V DC and 20-30VDC
Amps	2.4 amps max at 12VDC
Impedance	2 Ohm
dB Output	110dB at 3.5m (Single unit)
Nominal power	20w Neodymium/speaker, 20w digital siren



S20IS-PA

- Compact all-in-one speaker siren PA
- Water resistant microphone
- Synchronise with S20IS (standard model)
- Momentary & latching switch functions
- EMC / R10 compliant
- KBA german & UTAC French approved tones
- IP69K protection against dust & water
- 3 positive or negative triggers
- Latching/momentary tones available
- Audible sense / monitor output
- 2 year warranty

Dimensions	200(L) x 140(W) x 46 (H)
Voltage	11-16V DC and 20-30VDC
Amps	2.4 amps max at 12VDC
Impedance	4 Ohm
dB Output	110dB at 3.5m (Single unit)
Nominal power	20w Neodymium/speaker, 20w digital siren



EM500 SIREN

- International and European Tones (programmable)
- PA and non-PA models available
- Audible sense feature included as standard
- Low current 'standby' feature
- Positive and negative triggers
- Tone selector accessible externally
- EMC / R10 Compliant
- 2 year warranty

Dimensions (mm)	120(L) x 95.5(W) x 51.5(H)
Voltage	12V DC
Impedance	11 Ohm
Frequency range	360 - 1750Hz
Nominal power	60w or 100w selectable (Day / Night)



EM60 PC SPEAKER

- Durable aluminium assembly
- Space Saving Pipe Speaker
- Use with 12 or 24 volt siren
- EMC: EMC/R10 Compliant
- IP66
- 2 year warranty

Dimensions (mm)	117.9 x 110.75 (speaker x 1m pipe) x 180 (pipe cowl)
Voltage	11-16V DC and 20-30VDC
Impedance	11 Ohm
Frequency range	180 - 700Hz
Nominal power	100W



S150SL SLIMLINE

- Can be used with 100W siren
- Durable steel assembly
- Slim-profile Compact Speaker
- Use with 12 or 24 volt siren
- EMC: EMC/R10 Compliant
- IP66
- 2 year warranty

Dimensions (mm)	168(L) x 132(W) x 54(H)
Impedance	11 Ohm
dB Output	113.1 dB
Nominal power	150W



COMBINATION PRODUCTS



// LIGHTING & SIREN
COMBINED



// TEMPORARY MOUNT



// MOVABLE BETWEEN
VEHICLES

Our combination product range is easily movable between vehicles and doesn't require any permanent fittings. This means that you get the quality lighting you need without compromising on vehicle lease agreements or damaging your car.

COMBINATION //

If you're searching for a non-permanent lighting & siren for your leased or temporary emergency vehicle, Redtronic has the perfect product solution. Our temporary mounted combination range is an excellent option for those who do not want to drill holes in their vehicles, and need to move the fixture between different vehicles as required.



FORNADO XS

TORNADO-XS



- Beacon and Speaker/Siren Combo
- Magnetic Mount
- 20w Neodymium speaker
- Inbuilt 20w digital siren
- Cruise and GATSO light features available
- ECER65 Class II Blue
- IP54 protection (IP69K internal LED modules)
- Various flash patterns (including CAP168/ICAO airport)
- Multi-function cigarette plug or LINX4 Universal controller options
- Light weight design
- 3 Year warranty

Dimensions (mm)	192mm x 176mm x 180mm (WxHxD)
Voltage	11-16VDC and 20-30VDC
Amps	3 Amp @12V DC
dB Output	110db at 3.5m
Nominal power	20W



FORNADO XDUO

TORNADOX DUO



- Beacon and Duo Speaker/Siren Combo
- Magnetic Mount
- 2x 20w Neodymium speaker
- 2x Inbuilt 20w digital siren
- Cruise and GATSO light features available
- ECER65 Class II Blue
- IP54 protection (IP69K internal LED modules)
- Various flash patterns (including CAP168/ICAO airport)
- KBA Brake Tested magnet mount
- Multi-function cigarette plug or LINX4 Universal controller options
- Light weight design
- 3 Year warranty

Dimensions (mm)	295mm x 176mm x 182mm (LxHxD)
Voltage	11-16VDC and 20-30VDC
Amps	4 Amp @12V DC
dB Output	110db at 3.5m (single unit)
Nominal power	2x 20w



SPARTAN X

SPARTAN X

- Low profile
- All emergency & safety colours available
- High quality toughened & UV stabilised polycarbonate lenses
- Single, tri and multi colour options
- Various additional options and mountings available
- ECER65 Class II Amber & Blue (Model dependant)
- Features include: rear reds, steady burn GATSO (blue), front / rear split and internal speaker / siren / PA
- IP54 protection (IP69K internal LED modules)
- Various flash patterns (including CAP168/ICAO airport)
- EMC R10 compliant
- Dekra Speed Rating: 146.6mph (236.2km/h) mag mount
- 2-5 Year warranty

Dimensions (mm)	550(L) x 64(H) x 305(w)
Voltage	12VDC
Amps	8.5 Amps
dB Output	100dB at 1m
Nominal power	100w / 100w digital siren



DSFX-X

- Double stack, Low profile
- All emergency & safety colours available
- High quality toughened & UV stabilised polycarbonate lenses
- Single, tri and multi colour options
- Various additional options and mountings available
- ECER65 Class I & II Amber & Blue (Model dependant)
- Features include: rear reds, steady burn GATSO (blue), front / rear split and internal speaker / siren / PA
- IP54 protection (IP69K internal LED modules)
- Various flash patterns (including CAP168/ICAO airport)
- EMC R10 compliant
- Dekra Speed Rating: 146.6mph (236.2km/h) mag mount
- 2-5 Year warranty

Dimensions (mm)	550(L) x 90(H) x 305(w)
Voltage	12VDC
Amps	9.5 Amps
dB Output	100dB at 1m
Nominal power	100w / 100w digital siren



MANUFACTURED IN THE UNITED KINGDOM

WORKLAMPS & SCENE LIGHTS



NIGHT ANGEL FLOOD

- Ultra-strong cast aluminium body
- Adjustable tilt and turn feature
- Powder coated black, weather resistant
- Colourless when not illuminated
- Flood light
- EMC / R10 compliant
- IP66 protection against dust & water ingress
- Multiple unit synchronisation
- Supplied with fixing kit
- 5 years warranty

Dimensions (mm)	200(L) x 140(H) x 46(D)
Voltage	11-30V DC
Amps	@12VDC 4.1 Amps
Light output	7,000 Lumens



NIGHT ANGEL SPOT

- Ultra-strong cast aluminium body
- Adjustable tilt and turn feature
- Powder coated black, weather resistant
- Colourless when not illuminated
- Spot light
- EMC / R10 compliant
- IP66 protection against dust & water ingress
- Multiple unit synchronisation
- Supplied with fixing kit
- 5 years warranty

Dimensions (mm)	200(L) x 140(H) x 46(D)
Voltage	11-30V DC
Amps	@12VDC 4.1 Amps
Light output	12,000 Lumens



NIGHT ANGEL SCENE LIGHT

- Compact and durable scene light
- Ultra-strong cast aluminium body
- Black, White, Red, Yellow housing options
- Colour matching facia
- Colourless when not illuminated
- 3000+ lumen output (white LED)
- EMC / R10 compliant
- IP69K protection against dust & water ingress
- Supplied with flexible rear gasket
- 5 year warranty

Dimensions (mm)	203(L) x 53(W) x 27(D)
Voltage	12 OR 24V DC
Amps	@12VDC: 1.7 Amps
Light Lumens	3000+ Lumens



WORKLAMPS // THOR RANGE

Redtronic's Thor WTRX-001 worklamp offers latest technology, ultra-bright white LEDs in a compact housing. Featuring a strong and durable polycarbonate lens and die-cast aluminium housing the Thor worklamp meets IP67 to protect against water and is EMC R10 approved. This worklamp is the perfect solution for most vehicle applications.



WTRX-001

- Four ultra-bright white LED's
- Flood Beam Pattern
- EMC / R10 compliant
- IP67 protection against dust & water ingress
- Steel mounting bracket#Die-case aluminium housing
- Polycarbonate lens
- 1 year warranty

Dimensions (mm)	70(L) x 95(H) x 41(D)
Voltage	10-30V DC
Amps	2.5 Amps @12VDC
Effective lumens	1,400-2,200
Raw Lumens	3,040 Lumens



WTRX-002

- Nine ultra-bright white LED's
- Flood Beam Pattern
- EMC / R10 compliant
- IP67 protection against dust & water ingress
- Steel mounting bracket#Die-case aluminium housing
- Polycarbonate lens
- 1 year warranty

Dimensions (mm)	101(L) x 114(H) x 45(D)
Voltage	10-30V DC
Amps	5.3 Amps @12VDC
Effective lumens	2,780 - 5,200
Raw Lumens	6,840 Lumens



WTRX-003

- Four ultra-bright white LED's
- Flood Beam Pattern
- EMC / R10 compliant
- IP67 protection against dust & water ingress
- Steel mounting bracket#Die-case aluminium housing
- Polycarbonate lens
- 1 year warranty

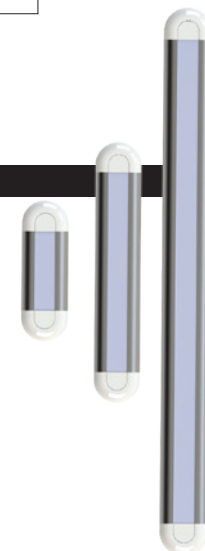
Dimensions (mm)	70(L) x 95(H) x 41(D)
Voltage	10-30V DC
Amps	7.8 Amps @12VDC
Effective lumens	2,780 - 5,200
Raw Lumens	6,840 Lumens



THOR


THOR INTERIOR LIGHTS

- High quality interior light
- Dual colour
- Single colour in white available on request
- 3 length options: 160mm, 300mm, 600mm
- EMC R10 and ADR compliant
- IP54 protection against dust & water ingress
- Lumens: 160-WB (273lm), 300-WB (691lm), 600-WB (1169lm)
- Flood beam pattern
- Surface mount (screws included)
- Hardwired / non-switch
- Switched and PIR versions available on request
- White and grey end cap options
- 50% DIM function
- Steel mounting bracket
- Aluminium housing
- Polycarbonate lens
- Voltage: 10-30VDC
- 1 year warranty



Dimensions (mm)	161 (L) x 53 (W) x 12 (D)	301 (L) x 53 (W) x 12 (D)	601 (L) x 53 (W) x 12 (D)
Voltage	10-30VDC	10-30VDC	10-30VDC
LEDs	22	58	134
Lumens	273	691	691

WHY CHOOSE REDTRONIC



UK DESIGN & MANUFACTURE

At Redtronic, we take pride in our commitment to quality and innovation. That's why all of our products are manufactured in-house right here in the UK. With a team of highly skilled engineers, dedicated designers, assembly specialists, and LED technical experts, we have the expertise to bring you the best.

CUSTOM BUILT PRODUCTS

As a leading supplier in the industry, we take pride in our efficiency and expertise in creating tailor-made lighting solutions. Whether it's lightbars or any other product, we manufacture to your exact specifications, ensuring maximum flexibility and a bespoke design that fits your requirements perfectly.

STOCK & LEAD TIMES

At our company, we take pride in our ability to swiftly supply orders and spare parts to our valued customers. One key advantage we offer is that we manufacture all of our warning lights right here in the UK.

QUALITY

Experience unmatched reliability with Redtronic's commitment to quality. Our rigorous testing procedures at every stage of the manufacturing process ensure that each product meets our high standards. With an average of 8 quality checks before dispatch, we leave no room for compromises.

WARRANTY / SERVICE

Redtronic warranties are serviced directly from the UK. Buying from reputable brands guarantees quality and reliability. Redtronic's technical team are available to deal efficiently with any enquiry within the quickest possible timeframe.

REDTRONIC // BEHIND EVERY PRODUCT



BUILT-IN AS STANDARD WITH EVERY REDTRONIC PRODUCT
FROM CONCEPT TO COMPLETION

SYNCHRONISATION
ACROSS ALL
REDTRONIC PRODUCTS

PLUG & PLAY
MODULAR DESIGN
FOR EASE OF INSTALL

CUSTOMISE / FLEXIBILITY
FOR YOUR SPECIFIC
REQUIREMENTS

TECHNICAL SUPPORT
EVERY STEP OF THE WAY

CUSTOMER SERVICE
ALWAYS HERE TO HELP

SERVICE SUPPORT
EXPERTS IN THE FIELD

WARRANTY
FOR PEACE OF MIND

PRODUCT TESTING
TO MEET ALL
REGULATIONS

DESIGNED IN-HOUSE
BY ENGINEERING
EXPERTS

INDUSTRY CERTIFICATIONS
AS STANDARD

UK MANUFACTURE
LED PLACEMENTS, ASSEMBLY,
TOOLING ALL UNDER ONE ROOF



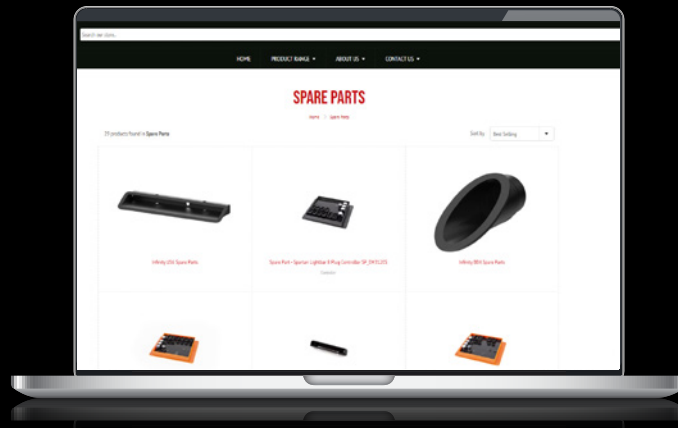
DISCOVER THE DIFFERENCE OF HIGH-QUALITY PRODUCTS THAT ARE BUILT TO LAST.

When you choose Redtronic, you're making an investment in quality. Our products are designed and manufactured right here in the UK, ensuring the highest standards of craftsmanship. And to give you peace of mind, we back our products with a solid warranty.

Experience the convenience of easy installation and the flexibility of configurable options. The Redtronic range is built to adapt to your needs, providing you with the ultimate user-friendly experience.

But it doesn't stop there. With our dedicated technical support and comprehensive warranty, you can have peace of mind knowing that we've got your back every step of the way.

MANUFACTURED IN THE
UNITED KINGDOM



VISIT OUR WEBSITE FOR A COMPLETE LISTING OF OUR PRODUCT LINE UP

- // FULL PRODUCT INFORMATION
- // BESPOKE PRODUCT CONFIGURATION
- // INSTALLATION GUIDES
- // ORDER ONLINE
- // 360° VIEW OF PRODUCTS
- // PRODUCT VIDEOS
- // ONLINE LIVE CHAT
- // DATASHEETS
- // ORDER SPARES ONLINE



WWW.REDTRONIC.CO.UK



REDTRONIC
VEHICLE WARNING AND SAFETY SOLUTIONS

WE'RE HERE TO HELP
GET IN TOUCH WITH OUR FRIENDLY TEAM

+44 (0)1422 310999

INFO@REDTRONIC.CO.UK

FOLLOW US ON OUR SOCIAL CHANNELS // @REDTRONICLTD

