



BULLITT

ADVANCED MOUNTING METHODS

Contents:

Page 1: EM108UF Universal Footpack

Page 2: EM108UF+EM102RFSS Universal Footpack & Super Strong Magnet

Page 3: EM108UF+EM108GMUF Universal Footpack & Gutter Mount

Page 4: EM108RBB Roof Bar Bracket

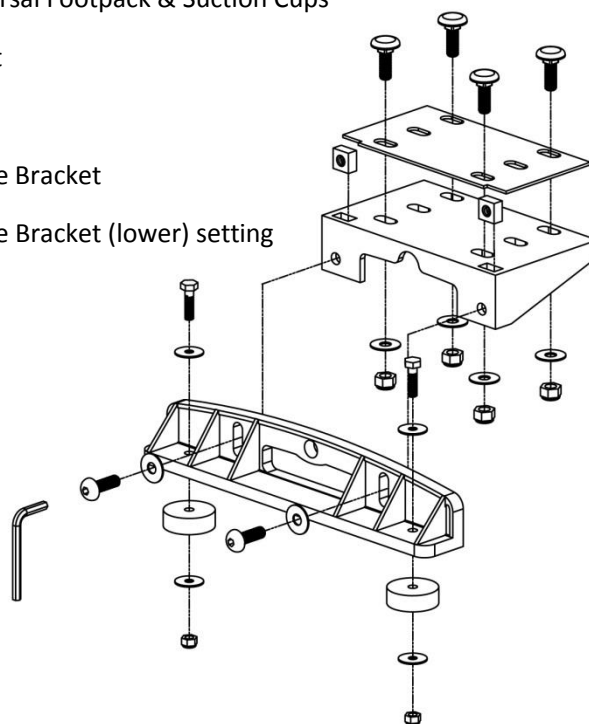
Page 5: EM108UF & EM102SC Universal Footpack & Suction Cups

Page 6: EM108RRB Roof Rail Bracket

Page 7: EM108RRC Roof Rail Clamp

Page 8: EM108UHP Ultra High Profile Bracket

Page 9: EM108UHP Ultra High Profile Bracket (lower) setting



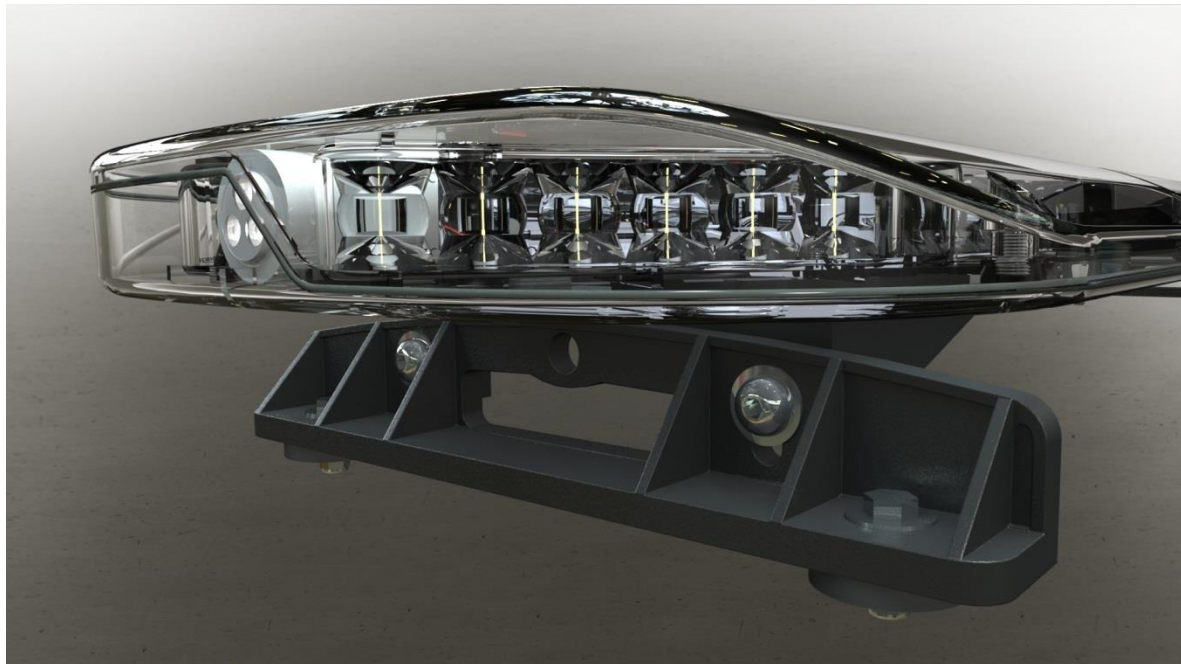
Lightbar Mounting Methods

There are several options available for mounting the Bullitt Advanced Lightbar

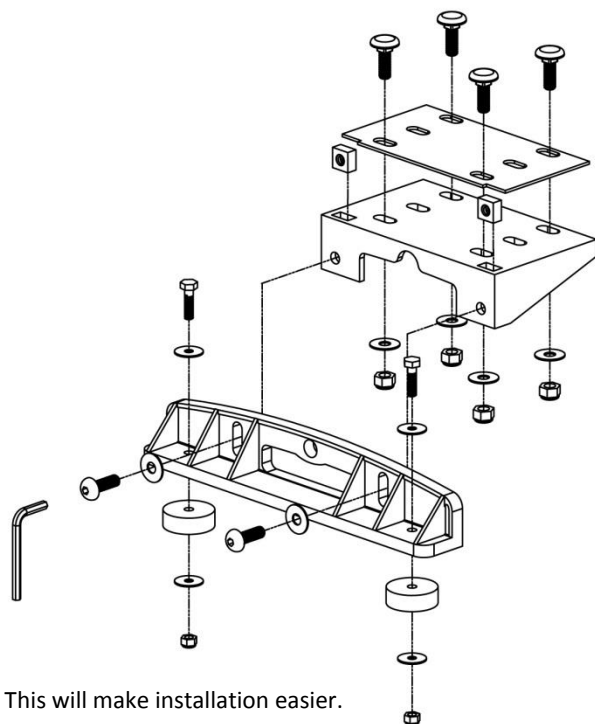
a) EM108UF Universal Footpack

Part No. EM108UF

Fixing: Permanent - 47-60mm elevation with adjustable angle



Quantity	Description
8	M8 Nyloc Nuts (A2)
12	M8 x 21 Ring Washer A2
8	M6 x 20 Wing Washer A2
8	M8 x 25 Coach Bolt (A4)
4	M8 x 25 Allen Socket Button Head A4
4	M6 x 25 Set Screw A4
4	M6 Nyloc Nuts A2
4	M8 Square Nut A2
4	Rubber Spacer
1	Allen Key 5mm
2	FOOTPACK PART 2 LONG BASE
2	FOOTPACK PART 1 SHORT BASE
2	Rubber Spacer /Pad



Installation instructions:

- Assemble Universal footpack kit as primary task. This will make installation easier.
- Install to the Lightbar basetray.
- Mark installation positions on roof of vehicle (or installation point)
- Drill positions using appropriate drill bit. We recommend 6.5mm drill bit (supplied installation bolts are M6 {6mm} size).
- Ensure rubber feet are used with installation to assist with vibrations whilst mounted on vehicle (ie during use).
- Height of footpack can be adjusted to assist with angled installation and/or to reach desired install height.

b) EM108UF & EM102RFSS Universal Footpack & Super Strong Magnets - (21.5" / 55cm only)

Part No. EM108UF & EM102RFSS

Fixing: Temporary

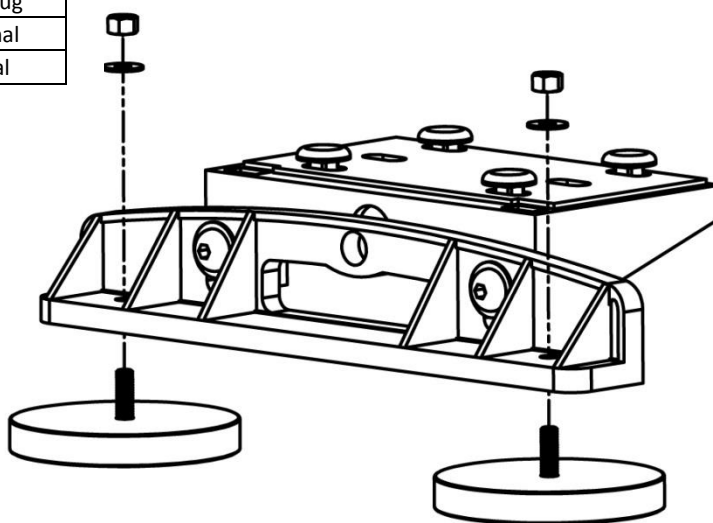
55-68mm elevation with adjustable angle

DEKRA speed test rated to 146mph/235kph

Can be used in conjunction with a Safety Lanyard (EM173L1)



Quantity	Description
4	Magnetic feet
4	M8 Nut
4	M8 Washer
4	M8 Nyloc
1	3 Core Cigarette plug
3	Red female terminal
3	Red male terminal



Installation instructions:

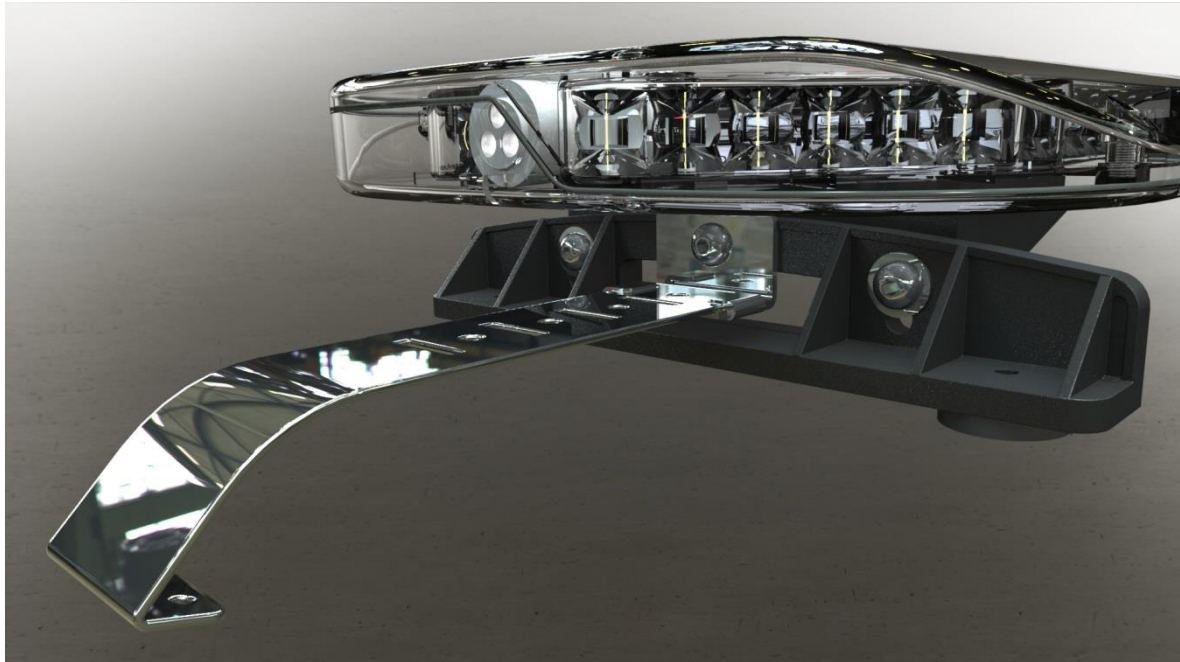
- Assemble Universal footpack kit as primary task.
- Install to the Lightbar basetray.
- Attached magnets through the positions as drawn.
- Secure with 1 x M8x32 Ring washer and 1 x M8 Nyloc Nut (both provided in kit).
- Repeat on all 4 installation positions.
- Height of footpack can be adjusted to assist with angled installation and/or to reach desired install height.



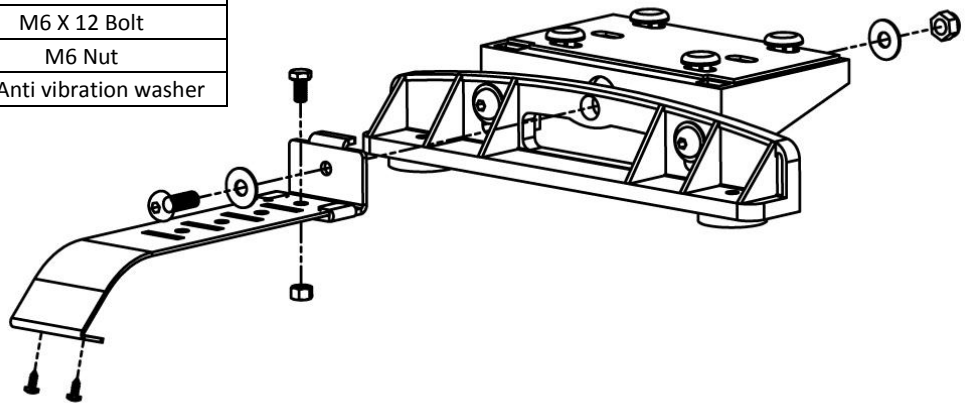
c) EM108UF & EM108GMUF Universal Footpack & Gutter Mount

Part No. EM108UF & EM108GMUF

Fixing: Semi-Permanent



Quantity	Description
1	M10 Allen key
2	M12 Washer
2	M12 X 25 Bolt
2	M12 Nyloc
2	Gutter bracket with foam
2	M6 X 12 Bolt
2	M6 Nut
2	M6 Anti vibration washer



Installation instructions:

- Assemble Universal footpack kit as primary task.
- Install the Lightbar basetray – ideally keep it slightly loose for tightening later.
- Install Gutter mount to Universal footpack using M12X25mm, 2 x M12 Ring Washer and 1 x M12 Nyloc nut.
- Hook 'Gutter mount' onto vehicle and locate the appropriate installation hole on mating bracket.
- Secure correct position with 1 x M6x12 bolt, 1 x M6 anti-vibration washer & 1 x M6 Nut (both provided in kit).
- If desired secure gutter mount into position on vehicle with 2x Appropriate self tapper screws (not provided).
- Height of footpack can be adjusted to assist with angled installation and/or to reach desired install height.



d) EM108RBB Roof Bar Bracket

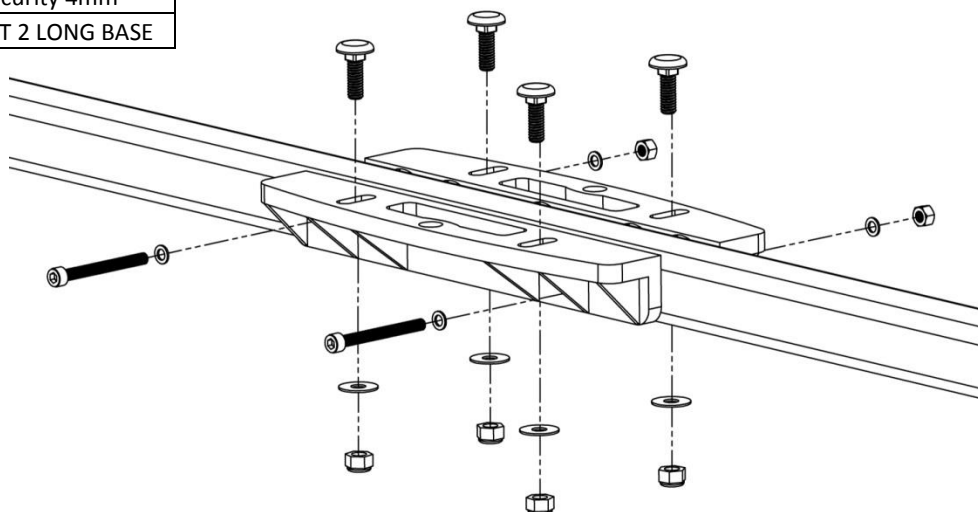
Part No. EM108RBB

Fixing: Permanent

26-56mm bar width with adjustable distance between brackets



Quantity	Description
8	M8 Nyloc Nuts
8	M8 x 20 Ring Washer
8	M8 x 25 Coach Bolt
4	M6 x 60 Security bolt
8	M6 x 20 Ring Washer
4	M6 Nyloc Nuts
1	Allen Key Security 4mm
4	FOOTPACK PART 2 LONG BASE



Installation instructions:

- Mount Long Footpack to base of Lightbar in above orientation using M8 Coachbolt, Ring Washer and Nyloc nuts.
- Ensure diameter of mounting feet are tight against the roofbar – adjustment can be made to allow for roofbars with thickness of between 26mm to 56mm width by adjusting the mounting to the lightbar basetray.
- Drill through the roofbar using 6.5mm (recommended) drill bit.
- Secure with the M6 security bolts and associated fixings.
- Repeat on opposite side of the Lightbar.
- NOTE: Cable entry position on Bullitt Bar does currently cause an issue with some manufacturers roofbar mounting, drilling bar may be necessary.**



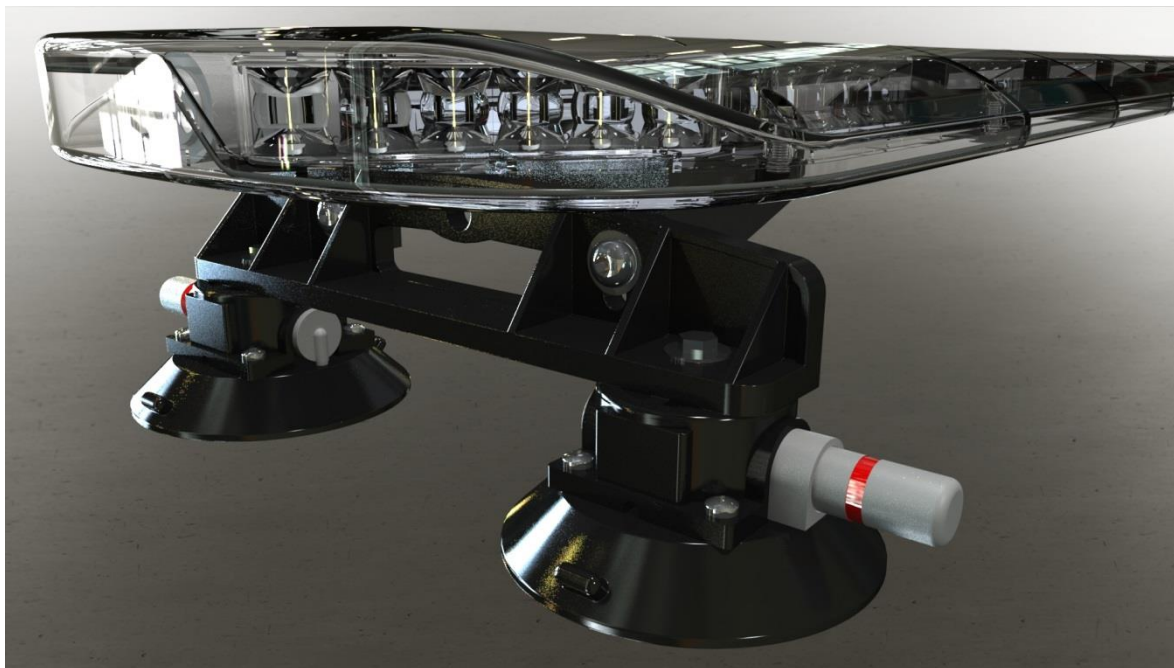
e) EM108UF & EM102SC Universal Footpack & Suction Cups (21.5" / 55cm only)

Part No. EM108UF & EM102SC

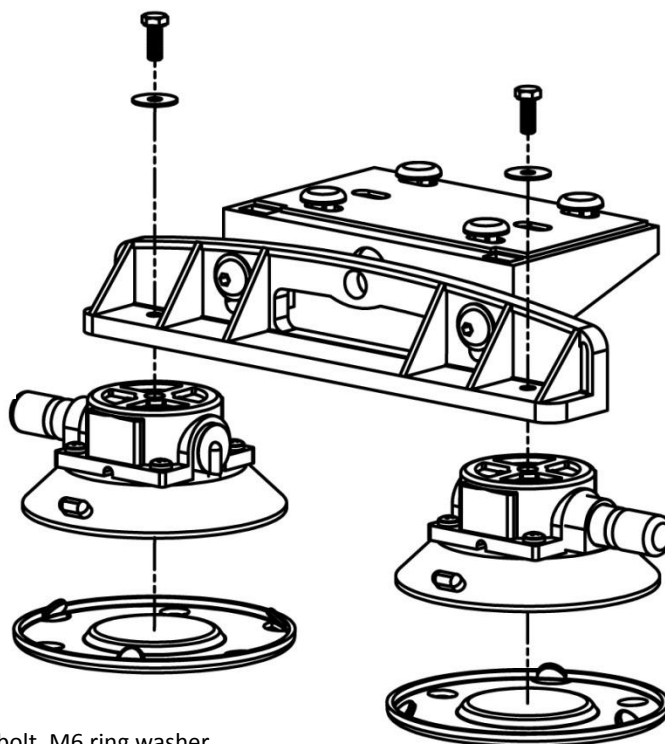
Fixing: Temporary

55-68mm elevation with adjustable angle

Should be used in conjunction with a Safety Lanyard (EM173L1)



Quantity	Description
4	AHM20 Suction cup
4	3/4 Inch UNC bolt
4	M6 Anti – Vibration washer
4	M6 x 20 Ring Washer



Installation instructions:

- Secure to Universal Footpack using 3/4" UNC bolt, M6 ring washer
- For use; clean the contact surface and inner vacuum cup to ensure there are no elements that may cause suction issues.
- Pump the plunger until the cup attaches completely. When the red line is hidden, the beacon is ready for use.
- Check the plunger frequently to make sure the cup remains securely attached.
- To release, pull the release tab on the suction cup until the unit disengages.
- NOTE:** Always remove the red caps from suction prior to use – these are for storage only (suction will not work if caps are present).



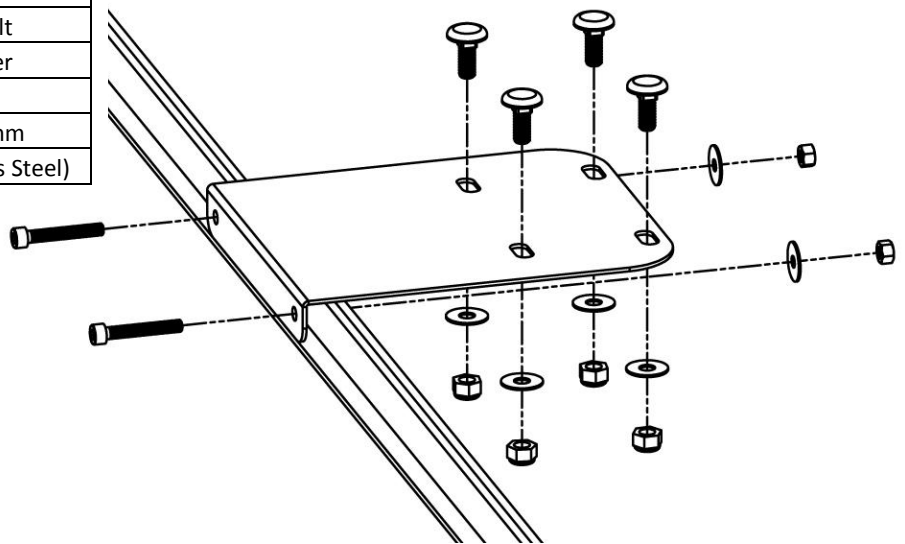
f) EM108RRB Roof Rail Bracket

Part No. EM108RRB

Fixing: Permanent



Quantity	Description
8	M8 Nyloc Nuts
8	M8 x 20 Ring Washer
8	M8 x 25 Coach Bolt
4	M6 x 60 Security bolt
8	M6 x 20 Ring Washer
4	M6 Nyloc Nuts
1	Allen Key Security 4mm
2	Roofrail Bracket (Stainless Steel)



Installation instructions:

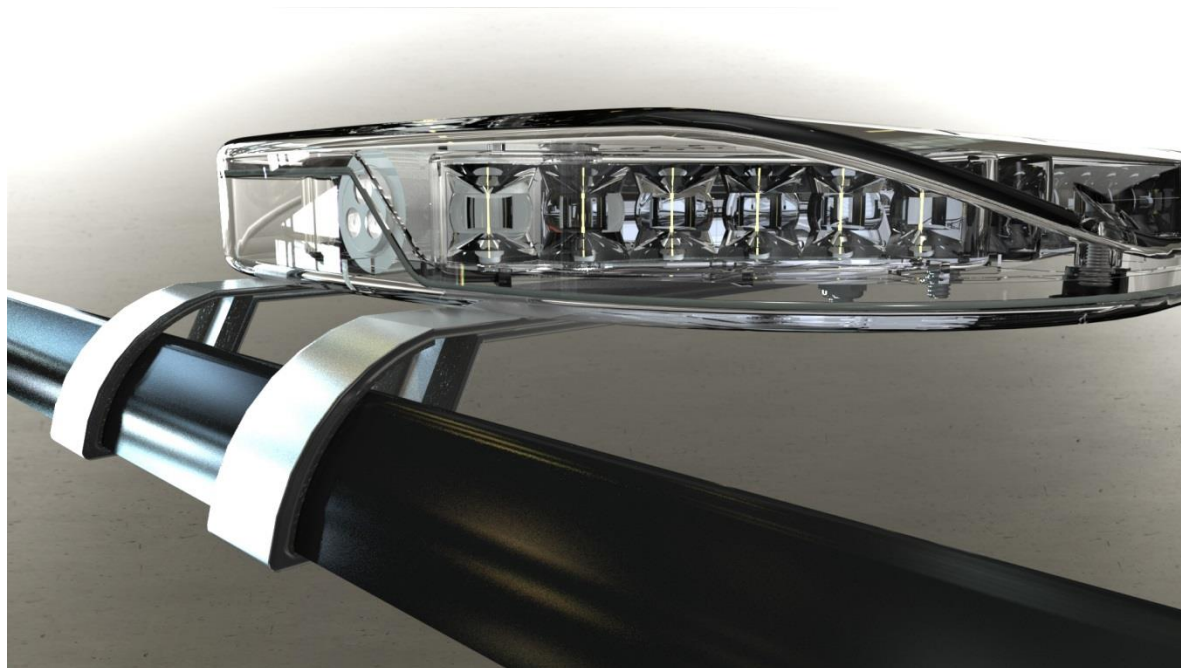
- Mount Stainless Steel Roofrail bracket to base of Lightbar in above orientation using M8 Coachbolt, Ring Washer and Nyloc nuts.
- Ensure mounting bracket hooks over roofrail appropriately and is flush with outer edge
- Drill through the roofbar using 6.5mm (recommended) drill bit.
- Secure with the M6 security bolts and associated fixings.
- Repeat on opposite side of the Lightbar.



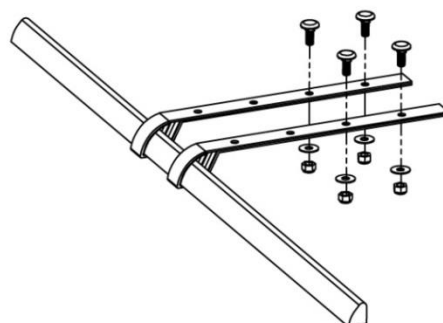
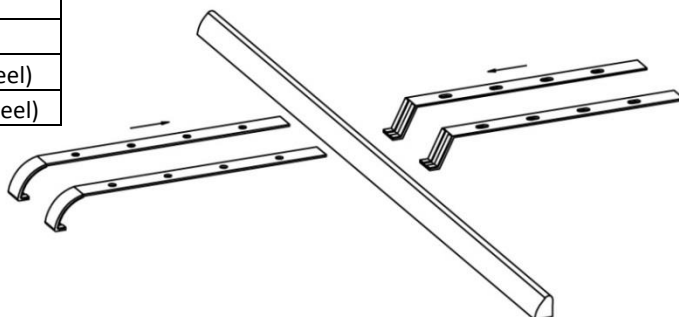
g) EM108RRC Roof Rail Clamps

Part No. EM108RRC

Fixing: Semi-Permanent



Quantity	Description
8	M8 Nyloc Nuts
8	M8 x 20 Ring Washer
8	M8 x 25 Coach Bolt
4	Roofrail Clamp bracket top (Stainless Steel)
4	Roofrail Clamp bracket base (Stainless Steel)



Installation instructions:

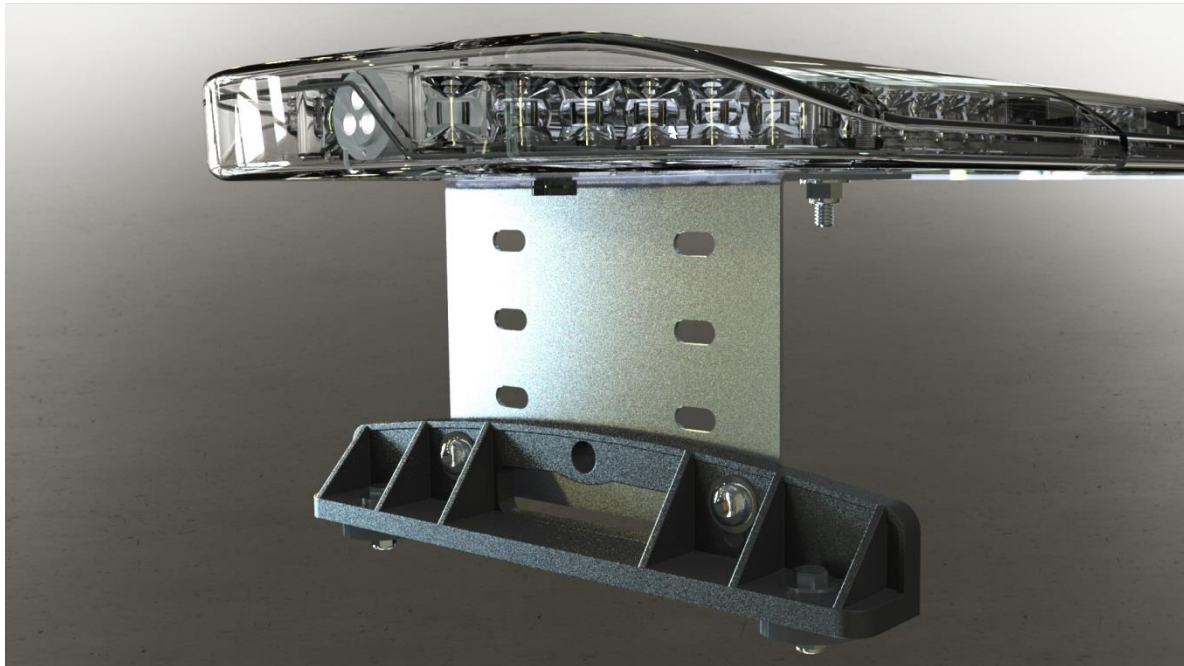
- Slide both BASE & TOP brackets around appropriate roof rails so they meet accordingly and clamp around the roof rail.
- Secure to the Lightbar base using the M8 fixing kit provided
- Ensure system is installed tightly and unable to move with vehicle vibrations
- Repeat on opposite side of the Lightbar.



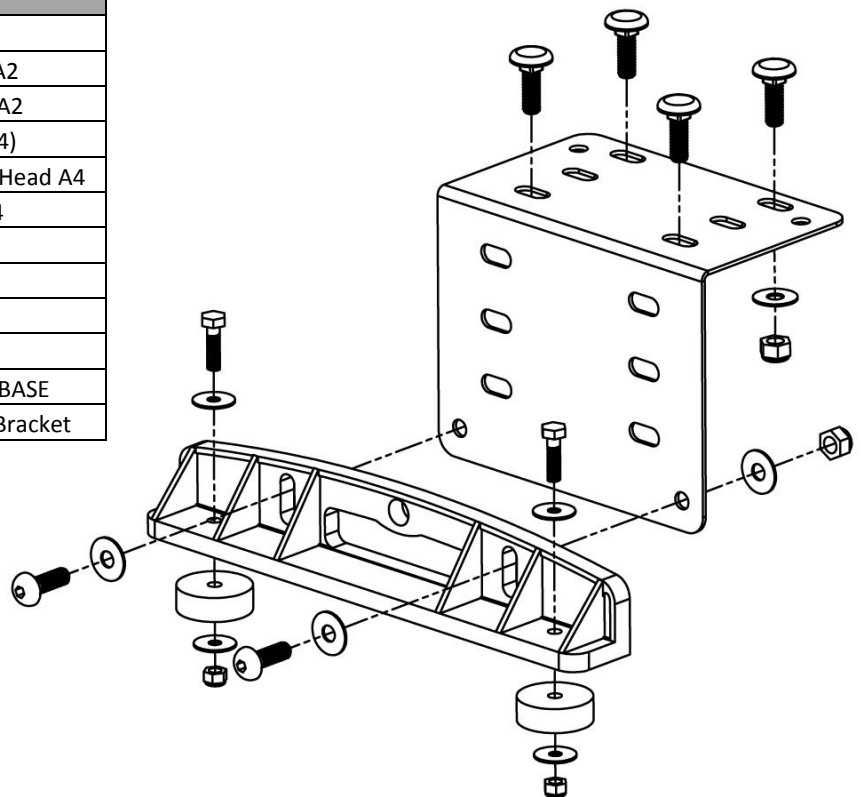
h) EM108UHP Ultra High Profile Bracket - NEW

Part No. EM108UHP

Fixing: Permanent - 150mm elevation with adjustable angle



Quantity	Description
8	M8 Nyloc Nuts (A2)
12	M8 x 21 Ring Washer A2
8	M6 x 20 Wing Washer A2
8	M8 x 25 Coach Bolt (A4)
4	M8 x 25 Allen Socket Button Head A4
4	M6 x 25 Set Screw A4
4	M6 Nyloc Nuts A2
4	M8 Square Nut A2
4	Rubber Spacer
1	Allen Key 5mm
2	FOOTPACK PART 2 LONG BASE
2	ULTRA High Stainless Steel Bracket



Installation instructions:

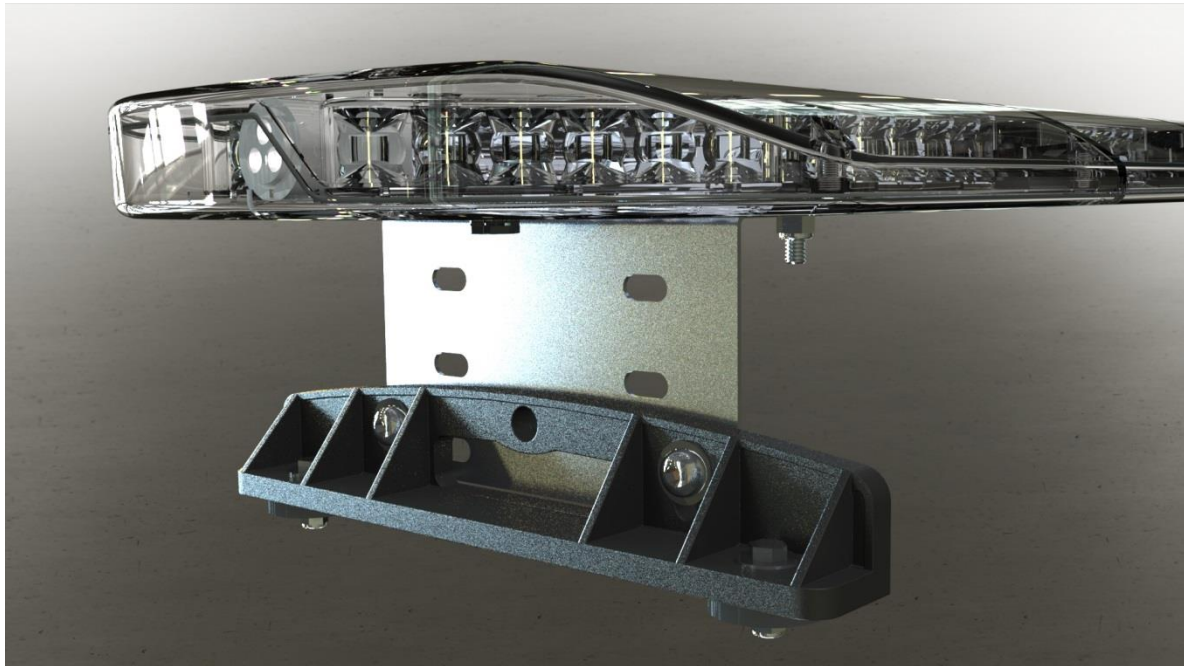
- Assemble the 'Ultra-high profile' bracket combined with the Long Base from standard Universal footpack kit as primary task. This will make installation easier.
- Install to the Lightbar basetray.
- Mark installation positions on roof of vehicle (or installation point)
- Drill positions using appropriate drill bit. We recommend 6.5mm drill bit (supplied installation bolts are M6 {6mm} size).
- Ensure rubber feet are used with installation to assist with vibrations whilst mounted on vehicle (ie during use).
- Height of footpack can be adjusted by installing the stainless steel plate to a different face to reach desired install height.
- NOTE: For a lower set height of 115mm – see option (i)**



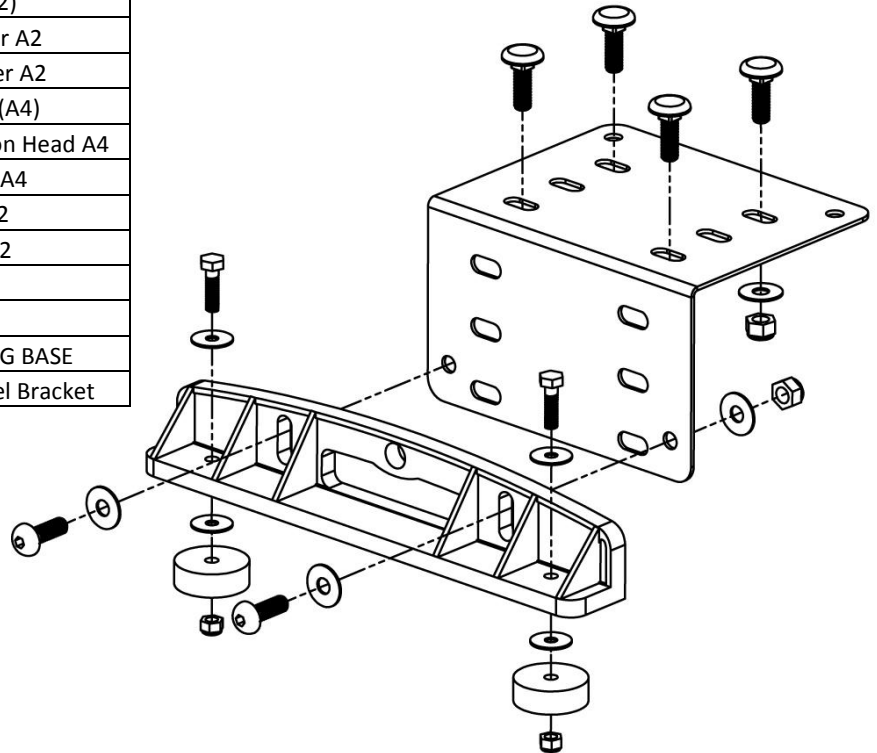
i) **EM108UHP Ultra High Profile Bracket – (lower) setting - NEW**

Part No. EM108UHP

Fixing: Permanent - 115mm elevation with adjustable angle



Quantity	Description
8	M8 Nyloc Nuts (A2)
12	M8 x 21 Ring Washer A2
8	M6 x 20 Wing Washer A2
8	M8 x 25 Coach Bolt (A4)
4	M8 x 25 Allen Socket Button Head A4
4	M6 x 25 Set Screw A4
4	M6 Nyloc Nuts A2
4	M8 Square Nut A2
4	Rubber Spacer
1	Allen Key 5mm
2	FOOTPACK PART 2 LONG BASE
2	ULTRA High Stainless Steel Bracket



Installation instructions:

- Assemble the 'Ultra-high profile' bracket combined with the Long Base from standard Universal footpack kit as primary task. This will make installation easier.
- Install to the Lightbar basetray.
- Mark installation positions on roof of vehicle (or installation point)
- Drill positions using appropriate drill bit. We recommend 6.5mm drill bit (supplied installation bolts are M6 {6mm} size).
- Ensure rubber feet are used with installation to assist with vibrations whilst mounted on vehicle (ie during use).
- Height of footpack can be adjusted by installing the stainless steel plate to a different face to reach desired install height.
- NOTE: For an increased set height of 150mm – see option (h)