



DOUBLE TAP® PELLET BAITS

Best Practice Guide



- Biodegradable with no persistent residues
- Environmentally responsible, 98.4% less persistent than brodifacoum, no secondary kills, minimal risk to native birds and non-target species such as farm dogs and domestic pets etc
- Highly palatable, made from human food grade ingredients and proven to be significantly more palatable than other possum and rat baits
- A high-quality cost-effective toxin that does not require any licence
- A sound, trustworthy and more humane alternative to 2nd generation anticoagulant baits without the secondary poisoning risk
- Safe to handle
- Dyed green for bird protection
- Made in New Zealand



Double Tap Summary

Introduction

This covers the most efficient (least amount of effort) and effective (best results) of accomplishing the application of Double Tap® Pellet Baits for the control of Possums and Rats in bait stations. This is based on reputable procedures that have proven themselves as a result of research outcomes and over time by Connovation field advisors and large numbers of customers.

Double Tap baits are a high-quality, cost-effective form of pest control that does not require any licence to use. They contain the first-generation anticoagulant, Diphacinone and Vitamin D3, Cholecalciferol as the active ingredients. Diphacinone has a short half-life of 3 days, meaning it breaks down quicker and has no bioaccumulation unlike brodifacoum which has a half-life of 113 days (Fisher), with minimal secondary kills.



Cholecalciferol, which is a naturally occurring vitamin, but is toxic when used in high doses. It is biodegradable with no persistent residues and a minimal risk of secondary poisoning. Caution: Extreme care is required to safeguard against primary poisoning (accessing the bait directly) so take extra care around domestic pets, animals, cats and dogs.

Each bait contains 0.05g/kg of Diphacinone and 0.60g/kg of Cholecalciferol. It is effective at killing possums and rats with a similar potency to brodifacoum baits but without residue concerns, that is – environmentally responsible product to use with minimal food chain impact so won't harm the environment. Double Taps are a sustainable choice for farmers, orchardists, lifestyle block owners and others.

Double Tap Pellet Bait - 6g

Double Tap's smallest sized pellet bait weighs 6g and is primarily designed for possums and typically used in bait stations such as the Philproof. Bait stations can be located on or above the ground, however those below 200mm must restrict accessibility to children. While using Double Taps, it is essential to have an uninterrupted supply of fresh bait for at least 10 days or longer. These pellet baits offer high palatability as they are made from the best human food grade ingredients and do not contain wax. They are suitable for use in bush and forest environments.





Double Tap Pellet Bait - 12g

Double Tap's medium sized pellet bait weighs 12g and is particularly designed to target both possums and rats. These baits are typically used bait stations such as the PhilProof. All possum bait stations must be located above the ground and bait stations located below 200mm must restrict accessibility to children. While using Double Taps, it is essential to have an uninterrupted supply of fresh bait for at least 10 days or longer is suggested if signs of rat or possum activity continue. They offer high palatability to both rodents and possums as they are made from the best human food grade ingredients and do not contain wax. They are suitable for use in bush and forest environments.





Double Tap Pellet Bait - 28g

Double Tap's largest bait size weighs 28g and is block sized and has a hole through the centre that allows the bait to be secured inside bait station such as the Runthrough or ZigZag. This prevents rats from hoarding the baits and not necessarily being eaten. The Blocks are compact as they are made through an extrusion manufacture process and have acute edges that rodents like to gnaw. They offer high palatability to rodents as they are made from the best human food grade ingredients and do not contain wax which rodents do not like to eat. They are suitable for use in urban or rural environments.



Animal Sign

Possums

Droppings, scratching, evidence of browsing on shrubs or trees, bark biting, plucked fur from fighting, and heard at night.

Rats

Fresh droppings, rub marks, gnawing, feeding activity, and sightings.



Application

Prefeeding

Unlike acute toxins, with anticoagulants such as Diphacinone (D-Blocks) there is no need to pre-feed with nontoxic bait as the onset of symptoms takes some time and rodents do not associate feeling sick with the product. However, if the land has previously been subject to control with alternative products, it is advisable to prefeed because there is usually bait shy possums in these environments who will be wary of new products on their environment and will take time to get onto the bait.

Application

Double Tap in Bait Stations

Double Tap Pellet Baits are for use in bait stations only. In busy setting, bait placing for rats is recommended to be on a minimum of a 50 x 50 metre grid and 150 x 100 metre grid for possums. Locate bait in dry locations near runways and nesting sites away from children, pets, and domestic animals. Maintain an uninterrupted supply of bait for all rats.

Use Rodent Run-Through, Philproof or other bait station designed for holding rat and possum baits. Double Tap baits placed into bait stations will prevent access and predation by non-target animals and afford protection to bait from the weather. Site bait stations in areas where there is evidence of rats and possums. Spray ready to use Lure-It at and around the entrances and on top of the bait stations as the enticing fragrant lure will help to draw rats or possums to the bait.

Put gloves on before handling the baits. Ideally fill bait stations up with Double Tap Pellet Baits. Check each bait station at two-day intervals in the first instance in cases of high population; you don't want to run out of bait. Perhaps scale back if bait take is reduced. Where part or all of the bait has been eaten, replace with fresh bait. If consistent bait takes occur, then additional stations must be placed. Wash gloves in clean water and store in poison store for future use.

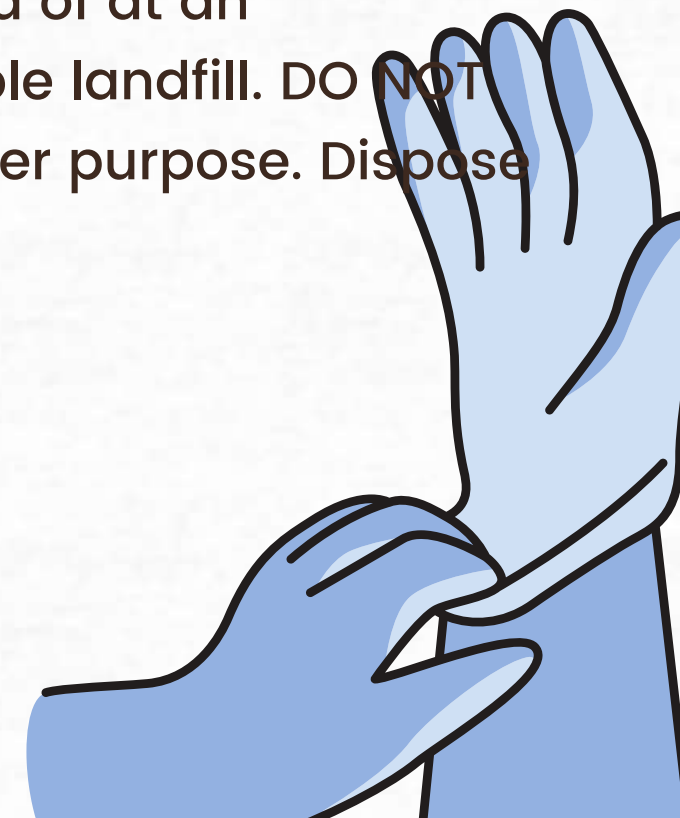
Compiled Information

	Bait Size	Possums	Rats
Bait Station Placement		Locate bait stations under rafters if possums are in the roof, or on trees where there are signs of possum activity	Locate Bait Stations under cover, along walls or rafters and in dark sheltered areas where there are signs of rodent activity with spacings 5-10mm
Initial Bait Station Loading	6g	6 – 10 pellets per Bait Station	6 – 10 pellets per Bait Station
	12g	3 – 5 pellets per Bait Station	3 – 5 pellets per Bait Station
	28g	1 – 2 pellets per Bait Station	1 – 2 pellets per Bait Station
Checking the replenishment		Between 6 to 10 days	Between 6 to 10 days
Replenishment Bait Station Loading	6g	6 – 10 pellets per Bait Station	6 – 10 pellets per Bait Station
	12g	3 – 5 pellets per Bait Station	3 – 5 pellets per Bait Station
	28g	1 – 2 pellets per Bait Station	1 – 2 pellets per Bait Station



Safety Recommendations

Adhere strictly to product label directions at all times. Double Tap Pellet Baits must be stored in its original container away from children, pets, or food. All remaining bait should be removed and disposed of at an appropriate disposal facility or suitable landfill. DO NOT use the empty packaging for any other purpose. Dispose of containers to suitable landfill.





Recording



If a large number of bait stations are placed, then record the stations on a GPS or geo map. This will ensure all stations are replenished with bait and once baiting is discontinued that all poison is removed if required.

Pre-Operational Monitoring

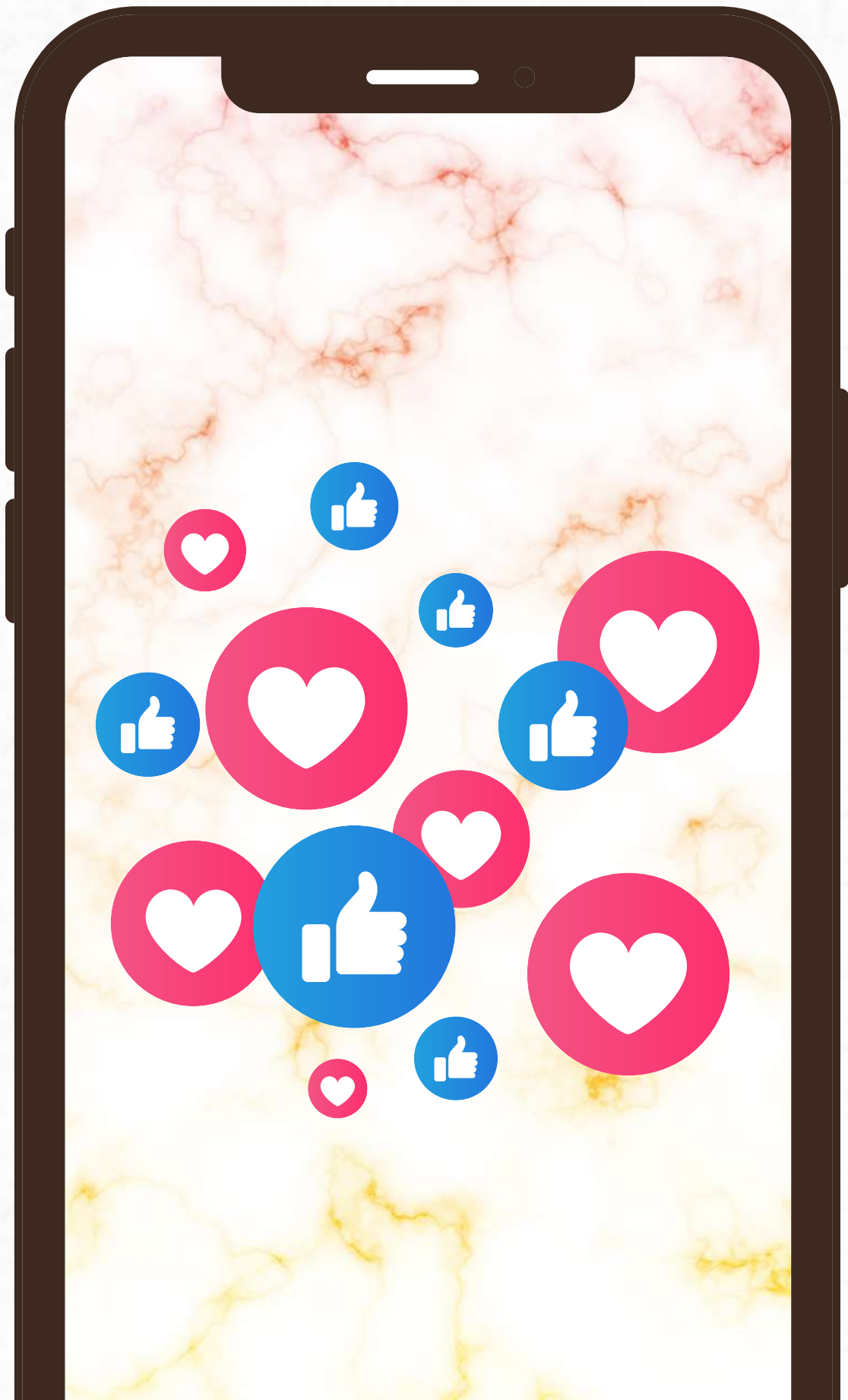
This can be undertaken with Connovation Chew Cards to determine rodent and possum numbers and to help identify the population you are dealing with. A Chew Card is a 180mm x 90mm piece of white core flute card that has a pre-feed peanut butter, aniseed paste pressed into the flute channels from the sides. The cards provide a visual surface for attraction and a surface for biting. They indicate presence of species by bite mark identification.



Products to use with Double Tap

- Run-Through Bait Station
- Philproof Bait Station
- Lure-IT
- Aerosol Lures





Stay Connected

Follow us on our social media channels and keep yourselves updates on the latest products and updates.



Facebook
@connovation



Instagram
@connovation



YouTube
@connovation



Contact Us for Queries



Connovation Ltd

PO Box 58613

Botany, Auckland 2163

36B Sir William Ave, East Tamaki

Auckland 2013

Connovation
CONSERVATION BY INNOVATION

EMAIL ADDRESS

sales@connovation.co.nz

WEBSITE

www.connovation.co.nz

PHONE NUMBER

09 273 4333