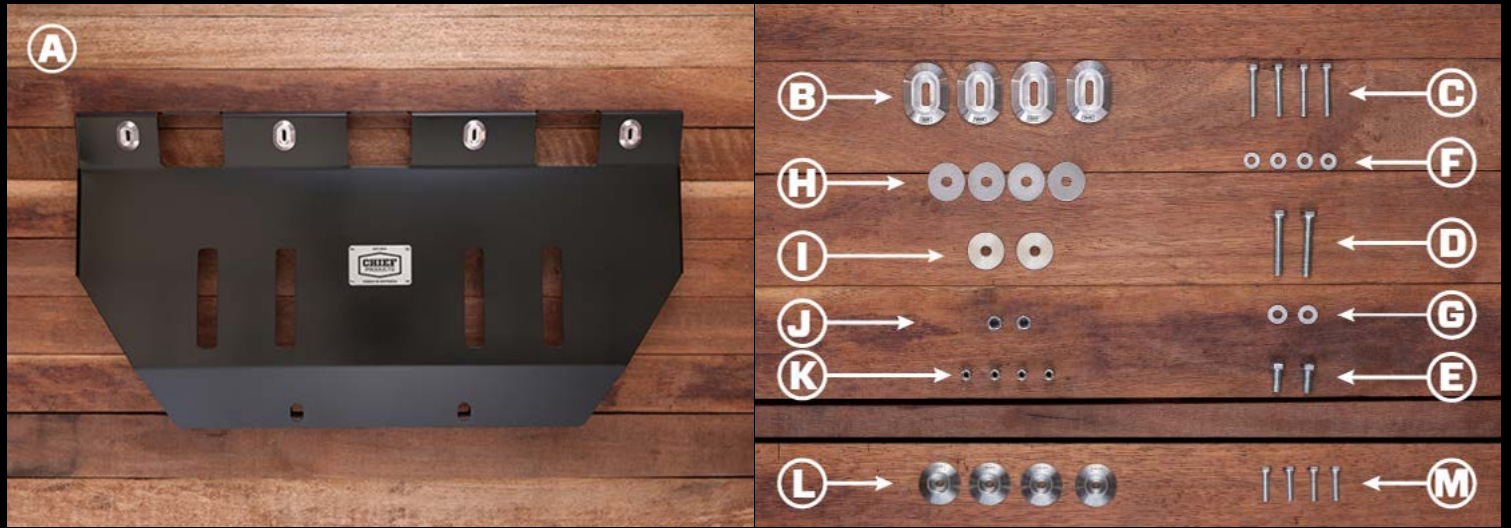


WK2 Sump Protection Plate

Install Instructions



REF	QTY	DESCRIPTION	REF	QTY	DESCRIPTION
A	1	Sump Protection Plate	-	1	4g Anti-Seize Pouch
B	4	M6 Bolt Head Protectors - Slotted (AL 5083)	-	1	Chief Products Shop Rag
C	4	M6 x 40mm 10.9 Bolts (Zinc)	RECOMMENDED INSTALL		
D	2	M8 x 50mm 10.9 Bolts (Zinc)	K	4	M6 Nutserts (Stainless Steel)
E	2	M8 x 20mm 4.6 Bolts (Zinc)	ACCESS PANEL		
F	4	M6 Wedge-Lock Extended Washers (Zinc Flake)	-	1	Access Panel
G	2	M8 Wedge-Lock Extended Washers (Zinc Flake)	L	4	M6 Bolt Head Protectors - Standard (AL 5083)
H	4	M8 x 32mm Flat Washer (Zinc)	M	4	M6 x 25mm 8.8 Bolts (Black Zinc)
I	2	M8 3mm Bushings			
J	2	M8 Nyloc Nuts (Zinc)			

REQUIRED TOOLS

10mm Socket	Ratchet
13mm Socket	Ratchet Extension
13mm Wrench	OPTIONAL - Nutsert Tool

NOTES

- Do not over-tighten fasteners.
- Photos are representative only. They may show prototype parts and be taken from multiple vehicles.

IMPORTANT

- PROPER INSTALLATION IS ESSENTIAL TO THE PERFORMANCE OF THIS PRODUCT.
- ONLY INSTALL THIS PRODUCT ON A 2011-2018 JEEP GRAND CHEROKEE.
- ONLY USE THE PROVIDED HARDWARE FOR INSTALLATION.
- DO NOT MODIFY THE STRUCTURE OF THIS PRODUCT IN ANY WAY.
- CHECK PRODUCT REGULARLY FOR DAMAGE. REPLACE IMMEDIATELY AT FIRST SIGN OF DAMAGE.
- CHECK FASTENER TIGHTNESS REGULARLY AND TIGHTEN IF REQUIRED.

1

Remove Lower Fascia.

1. Remove the lower fascia and set aside. Refer to the Owners Manual for basic instructions.

NOTE
This can be a tricky process. If you need help, we provide a 'How To' article on our website, (www.chiefproducts.com.au/blogs/how-to/11555201-wk2-lower-front-fascia-removal-installation). You can also download a PDF of the process here, (www.chiefproducts.com.au/installation/wk2-lower-front-fascia-removal-and-installation.pdf).



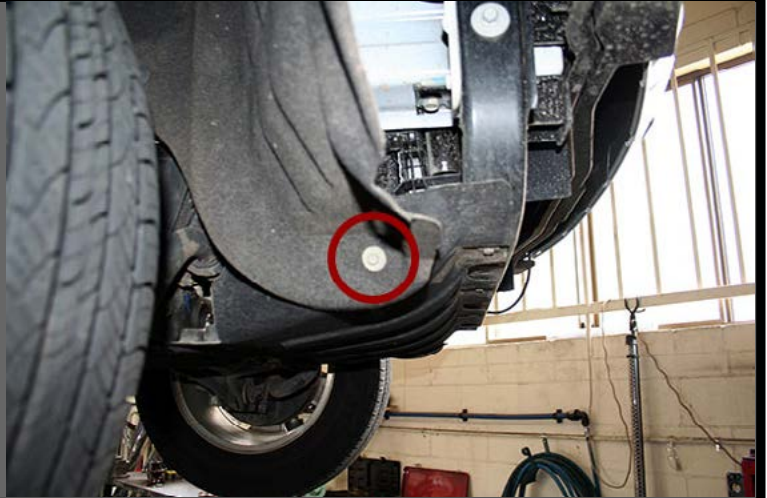
WK2 Sump Protection Plate

Install Instructions

2

Detach Inner Wheel Well Liners.

1. Remove (1) M6 Bolt on each side, (drivers & passengers). You may need to hold the clip on the backside so it doesn't turn.



3

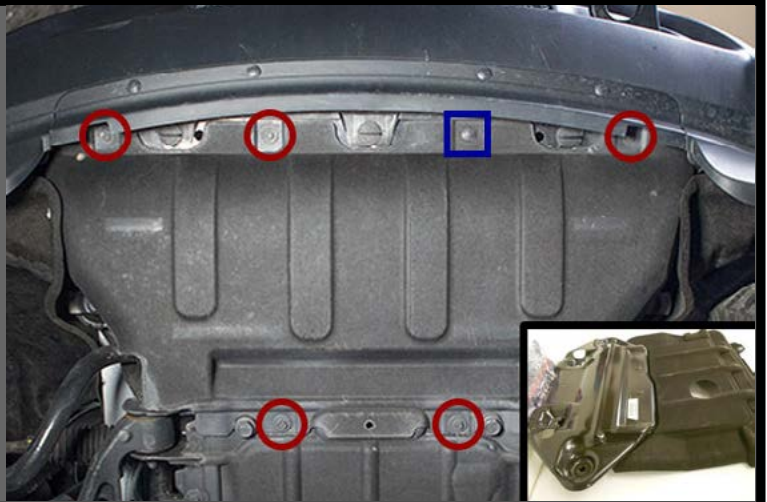
Unbolt stock plastic 'Belly Pan'.

1. Remove (3) M6 Bolts in front.
2. Remove (2) M8 Bolts in rear.
3. Some WK2s also require the removal of a push-in fastener, (square). This can be removed with a flat head screwdriver.

The stock 'Belly Pan' can now be removed.

NOTE

If you have Mopar Skid Plate Part #68199890AB remove this now (See inset image).



4

USA Models

Unbolt plastic 'Corner Guards'.

1. Remove the bolt holding the plastic Corner Guard to the sub-frame. Do this on both sides.
2. Leave Corner Guards hanging loose. Retain bolts.



RECOMMENDED INSTALL

The (3) M6 threads in the frame can be easily stripped if the M6 x 40mm Bolts [C] are over-tightened. Accidental over-tightening can happen during install or by a mechanic performing a service. For that reason, we've provided (4) M6 Nutserts [K] for anyone that wishes to upgrade the mounting points in the frame. The nutserts increase the thread length from 2-3mm to 9-10mm, greatly increasing the strength of the threads. It also provides an opportunity to add a 4th mounting point. Detailed instructions are available here, (www.chiefproducts.com.au/installation/wk2-m6-nutserts.pdf). Please note, installation requires a nutsert tool.

WK2 Sump Protection Plate

Install Instructions

IF YOU HAVE:

- Bare Bones (**GO TO STEP 5**).
- Standard, Heavy Duty or Access Panel (**Go To Step 7**).

5

Prepare for installation.

1. Prepare M6 Assembly - Slide (1) M6 Wedge-Lock Extended Washer [F] onto (1) M6 x 40mm Bolt [C]. Do this for (3) M6 Bolt Head Protectors.

NOTE

We've provided (4) M6 Assemblies. You'll only need the 4th assembly if you perform the recommended nutsert install (above).



6

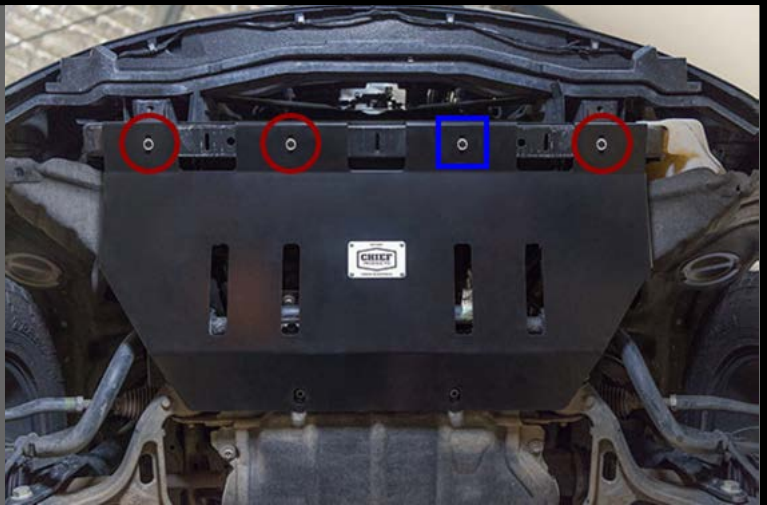
Bolt Sump Protection Plate to vehicle.

1. Hold Sump Protection Plate [A] against front cross member.
2. Install (3) M6 Assemblies into front bolt holes. Do not tighten fully. If you've installed a 4th nutsert into the sub-frame, install all (4) M6 Assemblies.

SKIP TO STEP 9.

NOTE

If you're performing the install on the ground, it can be helpful to use a jack or upside down bucket to hold the back of the plate loosely in place, while installing the front bolts.



7

Bolt Sump Protection Plate to vehicle.

1. Prepare M6 Assembly - Slide (1) M6 Wedge-Lock Extended Washer [F] and (1) M6 Bolt Head Protector [B] onto (1) M6 x 40mm Bolt [C]. Do this for (3) M6 Bolt Head Protectors.



WK2 Sump Protection Plate

Install Instructions

8

Bolt Sump Protection Plate to vehicle.

1. Hold Sump Protection Plate [A] against front cross member.
2. Install (3) M6 Assemblies into front bolt holes. Do not tighten fully. If you've installed a 4th nutsert into the sub-frame, install all (4) M6 Assemblies.

NOTE

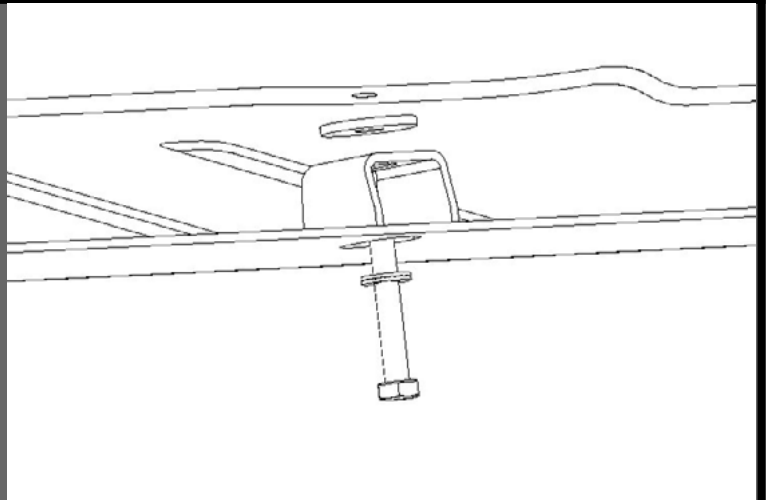
If you're performing the install on the ground, it can be helpful to use a jack or upside down bucket to hold the back of the plate loosely in place, while installing the front bolts.



9

Bolt Sump Protection Plate to vehicle.

1. Slide (1) M8 Wedge-Lock Extended Washer [G] onto (1) M8 x 50mm Bolt [D].
2. Slide the bolt & washer combo up through the Sump Protection Plate [A].
3. Place (1) M8 3mm Bushing [I] on top.
4. Hold Sump Protection Plate [A] tight against the vehicle and thread the M8 x 50mm Bolt [D] into the frame. Tighten until finger tight.
5. Do this for both rear mounting points.



NOTES

- It can help to use a 13mm Socket and Ratchet Extension to install the M8 x 50mm Bolts up through the holes in the Sump Protection Plate.
- **If you have the Mopar 'Front Axle Skid Plate'**, the WK2 Sump Protection Plate bolts on top. This configuration provides a smooth undercarriage as well as extra air flow and drainage.

10

Bolt Sump Protection Plate to vehicle.

1. Tighten all M6 Assemblies. Ensure M6 Bolt Head Protectors [B] key into Sump Protection Plate [A] and sit flush. Be careful not to over-tighten the M6 Bolts.
2. Tighten rear bolts.

NOTE

Recommended M8 Bolt Torque = 33Nm (Dry) or 28Nm (Anti-Seize)
 Recommended M6 Bolt Torque = 13Nm (Dry) or 11Nm (Anti-Seize)
 Recommended M6 Bolt Torque (with nutsert upgrade) = 19Nm (Dry) or 16Nm (Anti-Seize)



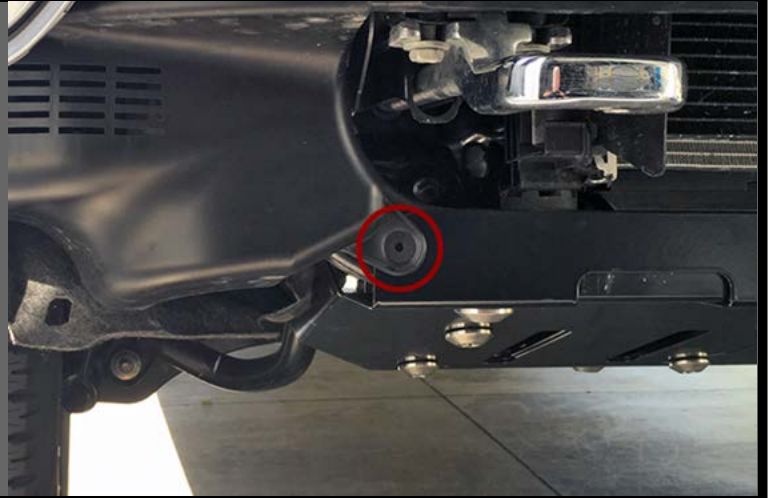
WK2 Sump Protection Plate

Install Instructions

11 USA Models

Reattach plastic 'Corner Guards'.

1. Slide stock bolt through plastic Corner Guard, through hole in Sump Protection Plate [A] and into sub-frame.
2. Tighten.
3. Do this for both sides.



12

Attach Inner Wheel Well Liners.

1. Tuck wheel well liner behind side tab on Sump Protection Plate [A]. Place (1) M8 x 32mm Washer [H] onto (1) M8 x 20mm Bolt [E]. Insert bolt & washer combo through slot on Sump Protection Plate [A] and hole in wheel well liner. Slide (1) M8 x 32mm Washer [H] over bolt shaft on inside of wheel well liner and attach (1) M8 Nyloc Nut [J]. Slide as far forward as possible and tighten.
2. Do this for both sides, (drivers & passengers).



13

Re-install Lower Fascia.

1. Re-install the lower fascia. Refer to the Owners Manual for basic instructions.

NOTE

This can be a tricky process. If you need help, we provide a 'How To' article on our website, (www.chiefproducts.com.au/blogs/how-to/11555201-wk2-lower-front-fascia-removal-installation). You can also download a PDF of the process here, (www.chiefproducts.com.au/installation/wk2-lower-front-facia-removal-and-installation.pdf).



WK2 Sump Protection Plate is now fully installed.

WK2 Sump Protection Plate

Install Instructions

ACCESS PANEL

[START]

1 Access Panel

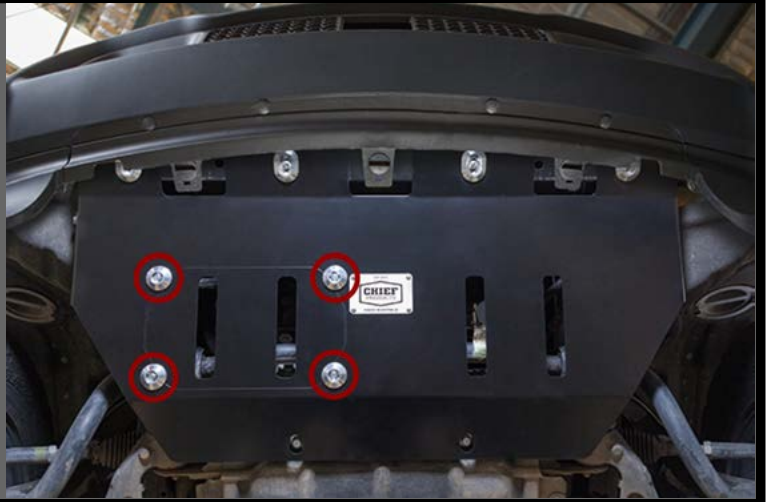
Remove/Install Access Panel.

1. Remove/install (4) M6 x 25mm Bolts [M] and (4) M6 Bolt Head Protectors [L].

NOTE

Tilting the Access Panel sideways allows you to easily slip it through the hole in the WK2 Sump Protection Plate.

Recommended M6 Bolt Torque = 19Nm (Dry) or 16Nm (Anti-Seize)



ACCESS PANEL

[END]

MAINTENANCE

FASTENERS

- Check fastener tightness regularly and tighten if required. We recommend checking fasteners after every large off-road trip.

CORROSION PROTECTION

- After an off-road trip; rinse all mud, sand or debris off the product.
- After driving in salt water; rinse product thoroughly with fresh water.

EXTRA CARE

- If you're planning to drive in a salty environment; spray fasteners with WD40 or an equivalent.
- If you're planning to drive in a salty environment; spray product with Lanolin or an equivalent.
- Spray deep scratches (before they rust) with touch up paint to help inhibit corrosion.

SUPPORT

Find answers online.

www.chiefproducts.com.au/pages/support

Having troubles? Make sure you've downloaded the most recent version of these instructions from our website. We occasionally make updates.

www.chiefproducts.com.au/installation/wk2-sump-protection-plate.pdf

If you need additional help, send us an email.

support@chiefproducts.com.au



WK2 Sump Protection Plate

Install Instructions

SHARE

Looking to share epic photos of your WK2?

Send us your photos - Unboxing, Fully Installed, Painted-In-Mud or out Adventuring in some beautiful location. If you share with us, we'll share with our followers.

UPLOAD

www.chiefproducts.com.au/share

EMAIL

connect@chiefproducts.com.au

HASHTAG

#ChiefProducts #GrandAdventure