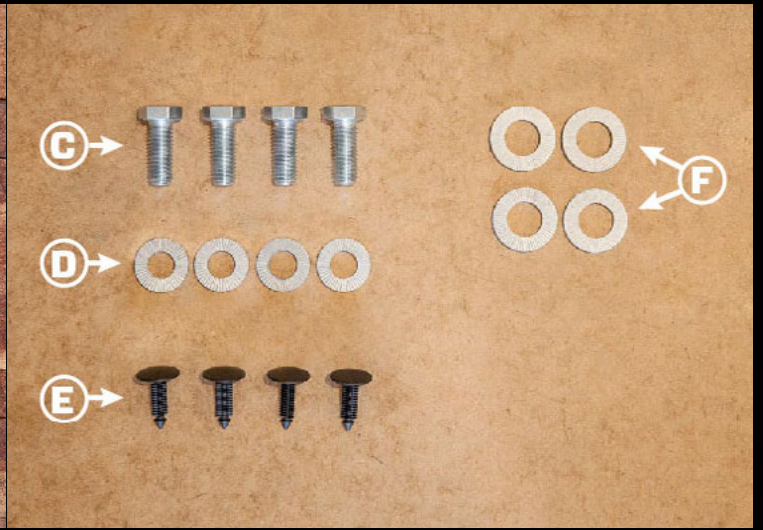
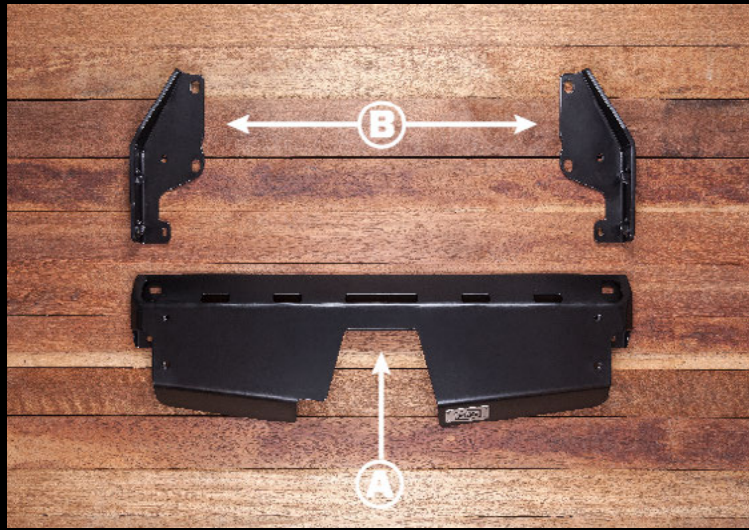


# WK2 Rear Bumper Guard

# Install Instructions



REF	QTY	DESCRIPTION
<b>A</b>	1	Centre Guard (Full/Open)
<b>B</b>	2	Chassis Mounting Bracket (LH + RH)
<b>C</b>	4	M12 x 30mm 10.9 Bolts (Zinc)
<b>D</b>	4	M12 Wedge-Lock Extended Washers (Zinc Flake)
<b>E</b>	4	Plastic Trim Fastener
-	1	4g Anti-Seize Pouch
-	1	Chief Products Shop Rag

REF	QTY	DESCRIPTION
<b>F</b>	4	<b>FULL CENTRE GUARD</b> M14 Wedge-Lock Extended Washers (Zinc Flake)
<b>F</b>	4	<b>OPEN CENTRE GUARD</b> M16 Wedge-Lock Extended Washers (Zinc Flake)

REQUIRED TOOLS	
19mm Socket	24mm Spanner
21mm Socket	Torx T30 Bit
24mm Socket	Punch Tool
Ratchet	Flat Head Screwdriver
Ratchet Extension	

NOTES
<ul style="list-style-type: none"> <li>Do not over-tighten fasteners.</li> <li>Photos are representative only. They may show prototype parts and be taken from multiple vehicles.</li> </ul>

**IMPORTANT**

- PROPER INSTALLATION IS ESSENTIAL TO THE PERFORMANCE OF THIS PRODUCT.
- ONLY INSTALL THIS PRODUCT ON A 2011-2018 JEEP GRAND CHEROKEE.
- ONLY USE THE PROVIDED HARDWARE FOR INSTALLATION.
- DO NOT MODIFY THE STRUCTURE OF THIS PRODUCT IN ANY WAY.
- CHECK PRODUCT REGULARLY FOR DAMAGE. REPLACE IMMEDIATELY AT FIRST SIGN OF DAMAGE.
- CHECK FASTENER TIGHTNESS REGULARLY AND TIGHTEN IF REQUIRED.

## Upper & Lower Facia Removal.

**1**

**Remove Wheel Well Fasteners.**

1. Remove (1) M6 Bolt on each side, (driver & passengers) [Red Square].
2. Remove (2) Plastic Rivets with punch tool on each side, (driver & passengers) [Red Circle].
3. Remove (1) M5 Bolt on each side, (driver & passengers) [Blue Square].



## WK2 Rear Bumper Guard

## Install Instructions

### 2

#### Remove Boot Fasteners.

1. Remove (2) Torx T30H Bolts from under tail lights.



### 3

#### Remove undercarriage fasteners.

1. Remove (2) Plastic Fasteners with a flat head screwdriver.



### 4

#### Disconnect Fender Flares.

1. Pull the wheel well lining from under the fender towards the inside.
2. Push the (3) plastic tab style clips from the inside to release the rear of the fender.
3. Do this for both sides (driver & passenger).



## WK2 Rear Bumper Guard

## Install Instructions

### 5

#### Remove Upper Facia Fasteners.

1. Remove (1) M4 Bolt from behind the fender flare.
2. Do this for both sides (driver & passenger).



### 6

#### Disconnect Plastic Locator.

1. Unclip upper facia from plastic clip.
2. Do this for both sides (drivers & passengers).



### 7

#### Remove Upper & Lower Facia.

1. Unclip upper facia from wheel wells on each side (drivers & passengers).
2. Unclip upper facia from Tail lights on each side (drivers & passengers).
3. Disconnect parking sensor wiring loom on left hand side of vehicle (if applicable).
4. Set aside the upper facia in a safe place.



## WK2 Rear Bumper Guard

## Install Instructions

**8**

### Remove OEM Tow Hook.

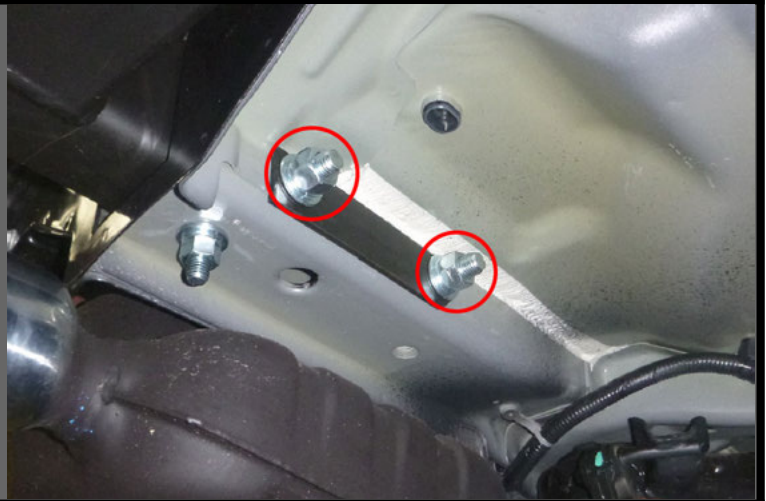
1. Remove (4) M12 bolts connecting the hook to the chassis [Red Circle].
2. Remove (1) M10 bolt connecting the hook arm onto the body [Blue Circle].



**9**

### Remove Hitch Fasteners.

1. Remove (2) M16 Bolts from Chassis.
2. Do this for both sides (driver & passenger).



Begin Installation.

**10**

### Install Chassis Mounting Bracket.

1. Slide (1) Chassis Mounting Brackets [B] onto the existing bolts.
2. **FULL CENTRE GUARD** - Slide (1) M14 Wedge-Lock Extended Washer [F] onto each of the (2) existing bolts. Reusing the (1) OEM M14 nut re-install onto each of the existing (2) bolts. Finger-tight.
3. **OPEN CENTRE GUARD** - Slide (1) M16 Wedge-Lock Extended Washer [F] onto each of the (2) existing bolts. Reusing the (1) OEM M16 nut re-install onto each of the existing (2) bolts. Finger-tight.
4. Do this for both sides (drivers & passengers).



## WK2 Rear Bumper Guard

## Install Instructions

**11**

### Install Centre Guard.

1. Slide (1) M12 Wedge-Lock Extended Washer [D] onto each (4) M12 x 30mm bolts [C].
2. Install the bolt & washer combo through each of the (4) mounting slots of the Centre Section [A], into the (2) Chassis Mounting Brackets [B]. Tighten.



**12**

### Tighten Chassis Mounting Bolts.

1. Tighten (4) M16 Bolts holding Chassis Mounting Brackets [B] to the frame.



Install Upper & Lower Facia.

**13**

### Reinstall OEM Upper & Lower Facia.

1. Connect the parking sensor wiring loom on the left side of the vehicle.
2. Starting at the top, push the OEM Upper & Lower Facia below the tail lights and move down to the wheel wells.
3. Do this for both sides (Driver & Passenger).



## WK2 Rear Bumper Guard

## Install Instructions

### 14

#### Install Upper Facia Fasteners.

1. Reusing the (1) OEM M4 Bolt re-install behind the fender flare.
2. Do this for both sides (driver & passenger).



### 15

#### Install Fender Flares.

1. Working your way backwards push the clips for each fender flare back into the body.
2. Do this for both sides (driver & passenger).



### 16

#### Reinstall Undercarrage fasteners.

1. Reusing the (2) OEM Plastic Push Fasteners, re-install under the vehicle.



## WK2 Rear Bumper Guard

## Install Instructions

**17**

### Reinstall Boot Fasteners.

1. Reusing the (2) OEM Torx T30 Bolts re-install below the tail lights.

**18**

### Re-Install Wheel Well Fasteners.

1. Reusing the (1) OEM M6 Bolt re-install on each side, (driver & passengers) [Red Square].
2. Install (2) Plastic Trim Fasteners [E] on each side, (driver & passengers) [Red Circle].
3. Reusing the (1) OEM M5 Bolt re-install on each side, (driver & passengers) [Blue Square].



The WK2 Rear Bumper Guard is now fully installed.

## MAINTENANCE

### FASTENERS

- Check fastener tightness regularly and tighten if required. We recommend checking fasteners after every large off-road trip.

### CORROSION PROTECTION

- After an off-road trip; rinse all mud, sand or debris off the product.
- After driving in salt water; rinse product thoroughly with fresh water.

### EXTRA CARE

- If you're planning to drive in a salty environment; spray fasteners with WD40 or an equivalent.
- If you're planning to drive in a salty environment; spray product with Lanolin or an equivalent.
- Spray deep scratches (before they rust) with touch up paint to help inhibit corrosion.



## WK2 Rear Bumper Guard

## Install Instructions

# SUPPORT

**Find answers online.**

[www.chiefproducts.com.au/pages/support](http://www.chiefproducts.com.au/pages/support)

**Having troubles? Make sure you've downloaded the most recent version of these instructions from our website. We occasionally make updates.**

[www.chiefproducts.com.au/installation/wk2-rear-bumper-guard.pdf](http://www.chiefproducts.com.au/installation/wk2-rear-bumper-guard.pdf)

**If you need additional help, send us an email.**

[support@chiefproducts.com.au](mailto:support@chiefproducts.com.au)

# SHARE

**Looking to share epic photos of your WK2?**

Send us your photos - Unboxing, Fully Installed, Painted-In-Mud or out Adventuring in some beautiful location. If you share with us, we'll share with our followers.

**UPLOAD**

[www.chiefproducts.com.au/share](http://www.chiefproducts.com.au/share)

**EMAIL**

[connect@chiefproducts.com.au](mailto:connect@chiefproducts.com.au)

**HASHTAG**

*#ChiefProducts #GrandAdventure*