



# WIFI via Broadlink Instructions

After installation of KONOQ switch successfully (scan the QR code below for Konoq Instruction Manual if required), in order to control KONOQ WIFI via Broadlink RM4 Pro (2020) or RM Pro+ (2018) models via phone (and voice command if you have Amazon Alexa or Google Assistant as optional), please follow the instructions steps below.



## STEP 1 – SETTING UP BROADLINK RM PRO

1) Download “Broadlink” App from the App Store or Google Play by searching or scanning the QR code below:



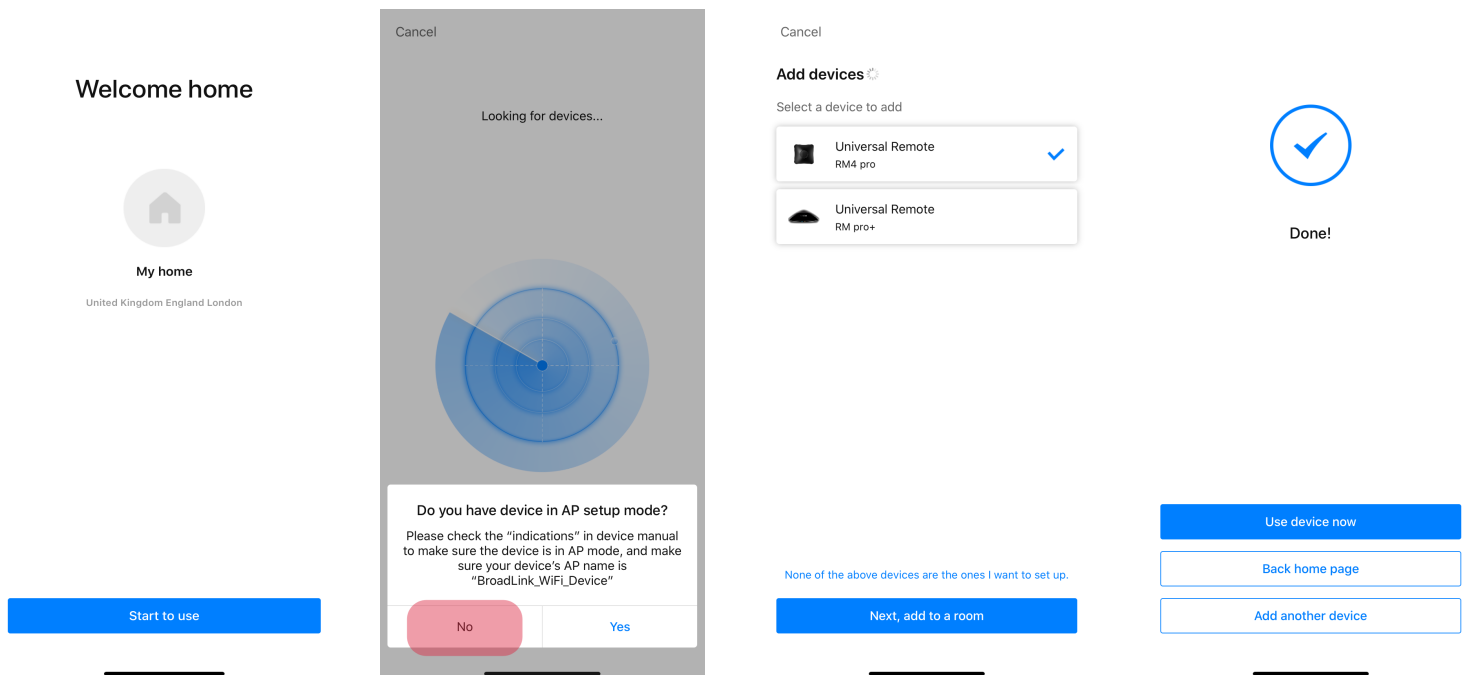
**BroadLink** (4+)  
Control your smart home  
BroadLink Co., Ltd  
★★★★★ 4.1, 129 Ratings  
Free



2) Follow the application instructions to register with your email and assign a password.

3) Prepare device by switching power on with USB cable. If it is the first time use, it will be in smart configuration mode automatically, the blue LED flashes quickly (2-3 times per second). If is not first time in use, reset the device by pressing reset button with a needle for 6 seconds until the LED flashes quickly.

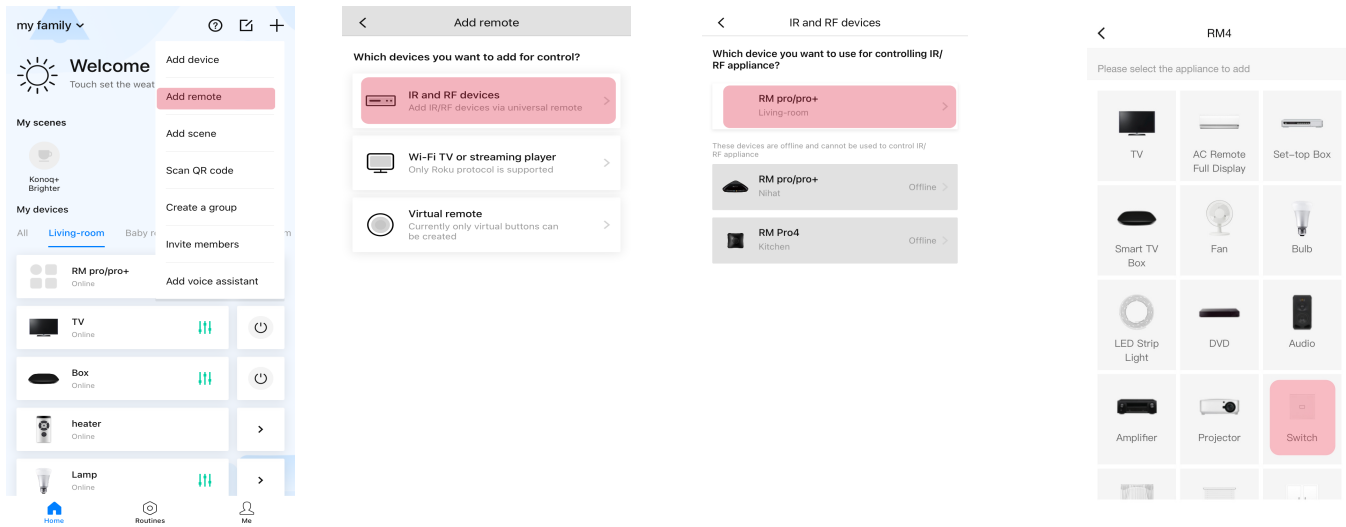
4) On application tab start to use option to pair with your Broadlink RM Pro device. Follow the application instructions to add your Broadlink RM Pro device as below. (Click no to AP setup mode question if you are setting up first time).



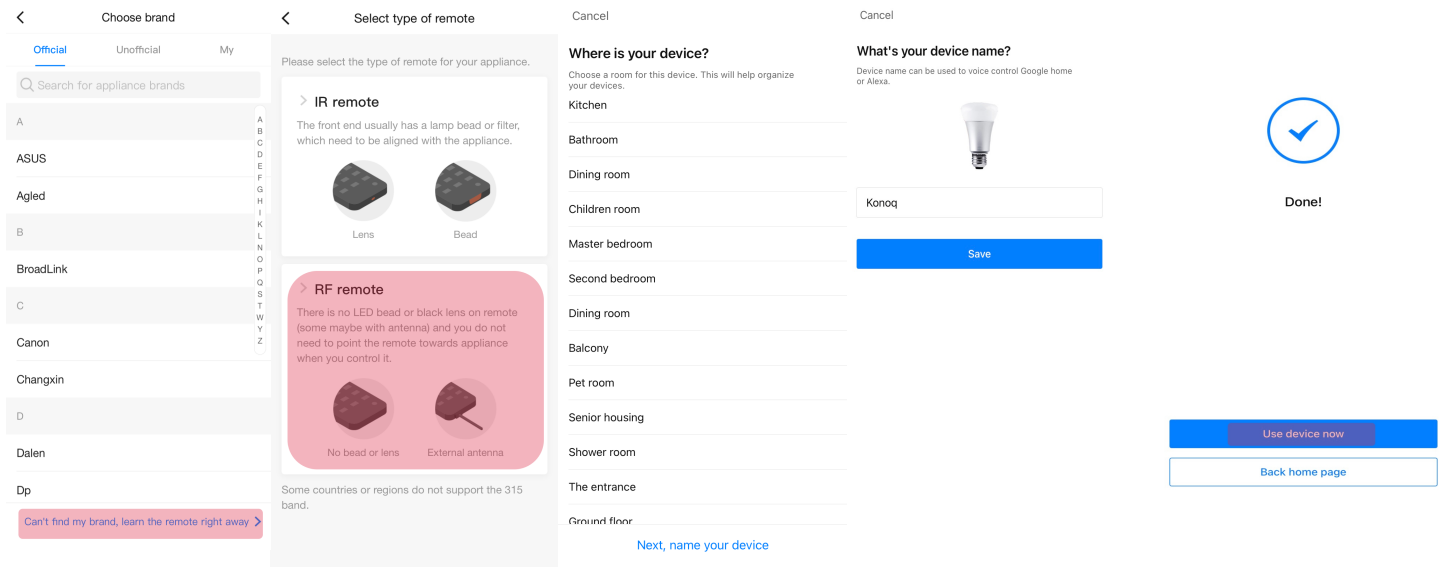
If you have difficulties to add device in smart configuration mode, please use AP set up mode by following app instructions. (Need to reset the device by with a needle for 10 seconds until the LED flashes quickly and off alternatively.)

## STEP 2 – PAIRING KONOQ SWITCH WITH BROADLINK RM PRO

- 1) After clicking “Use device now” option above, click plus on the top left corner of the screen and click “Add remote”
  - 2) Select “IR and RF devices” option on the next screen.
  - 3) If you have more than one Broadlink device choose the related one on the next screen.
  - 4) Select “Switch” appliance. Click “Add appliance” on the next screen.
- Please note that if you have any difficulty at later stages, you can try “Userdefine” or “Bulb” options.



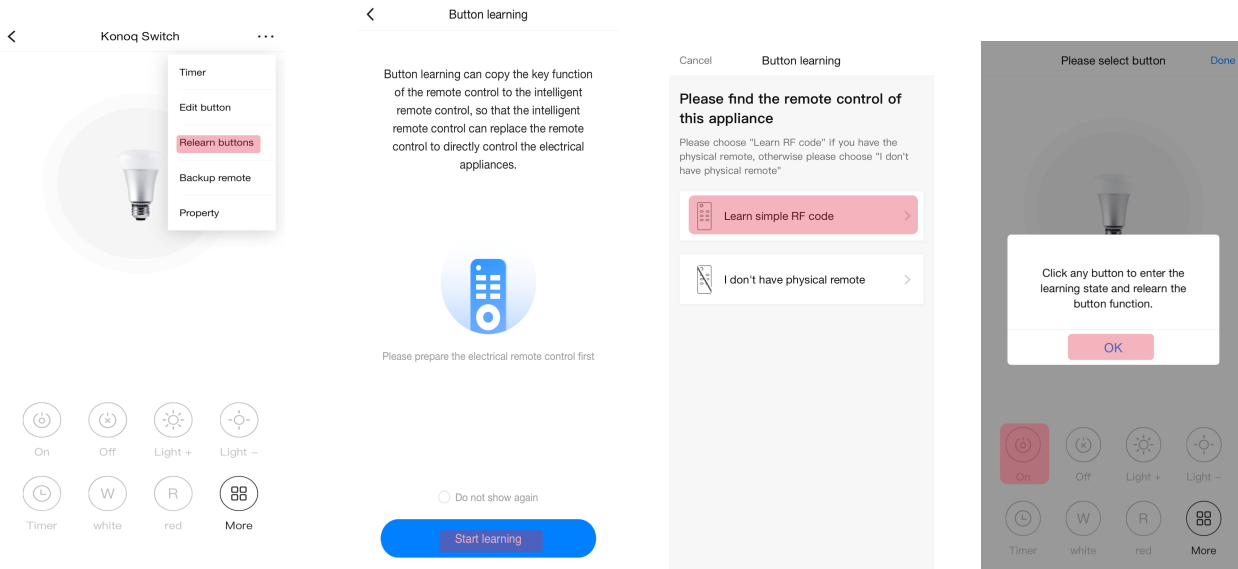
- 5) Click “can't find my brand, learn the remote right away” option on the bottom of the next screen.
- 6) Select “RF Remote” option.
- 7) Specify the room where the light is located.
- 8) Name your light on the next screen. (Pls note you will command Alexa/Google with this name if applicable)
- 9) Click “use device now” on the next screen



10) Click 3 dots on the left top corner on the next screen and select “Relearn buttons” option.

11) Click “Start learning” and “Learn simple RF code” on the next two screens

12) Click OK on the next screen to start learning process

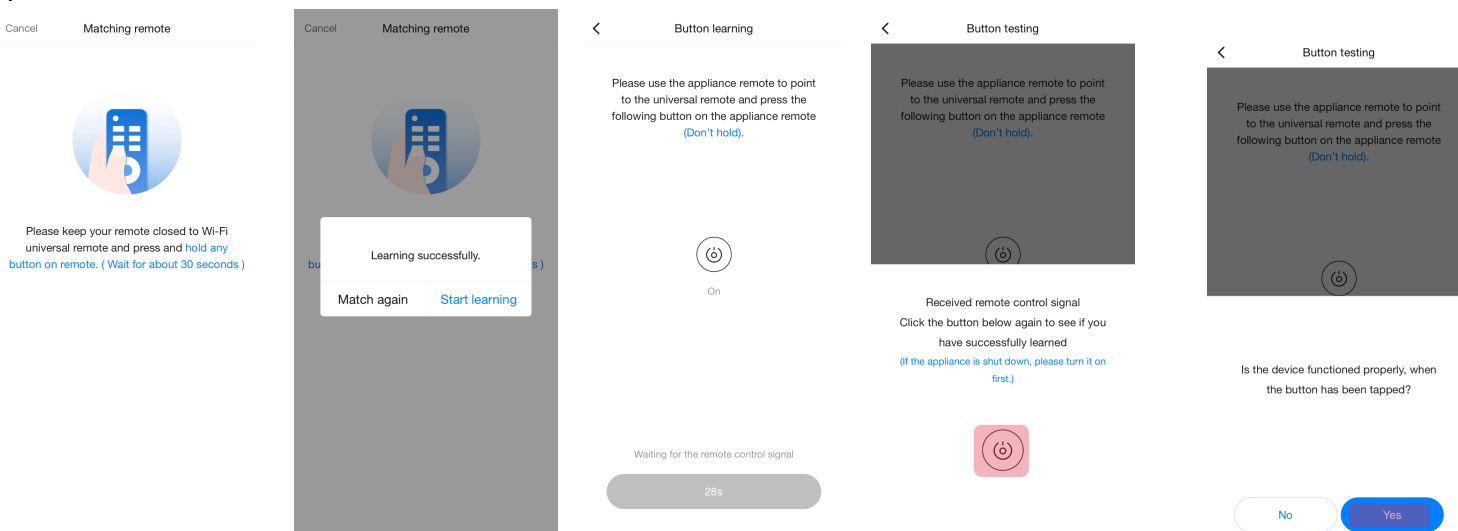


13) Repeatedly press a button on remote controller until “Learning successfully” message appears

14) Click “Start learning” which will take you to learning process of ON button.

15) Repeatedly press ON (A) button on remote controller until “Received remote control signal” message. Click the button on the application to test if learning process was successful. If it works click “Yes” to the question. Otherwise click “No” which will take you back to previous step to repeat the pairing process again.

16) Repeat the process for all commands reference to step 17, which is specific to each mode.



17) There are different pairing instructions for each model, please choose the right model below considering the notes below.

If you have a 2 or 3 gang switch in other words switch controls more than 1 light (set of lights), you need to name each light individually and repeat section 1 to 6 for each gang.

If you want to control a dimmer type switch via voice control with Alexa, dimmer commands are currently not supported. In order to work around, you need to create 2 lights for each gang; one for on/off and another for dimmer +/- function

**A. 1 Gang On/Off**

**ON** : Button A  
**OFF**: Button D

**B. 2 Gang On/Off** (Create a new light for each gang)

LIGHT1	LIGHT2
<b>ON</b> : Button A	<b>ON</b> : Button B
<b>OFF</b> : Button A	<b>OFF</b> : Button B

**C. 3 Gang On/Off** (Create a new light for each gang)

LIGHT1	LIGHT2	LIGHT3
<b>ON</b> : Button A	<b>ON</b> : Button B	<b>ON</b> : Button C
<b>OFF</b> : Button A	<b>OFF</b> : Button B	<b>OFF</b> : Button C

**D. 1 Gang Dimmer** (Please follow section G if planning to pair Dimmer with Alexa)

**ON** : Button A  
**Dimmer -** : Button C  
**Dimmer +** : Button B  
**OFF**: Button D

**E. 2 Gang Dimmer** (Create a new light for each gang, pls follow section H if planning to pair Dimmer with Alexa)

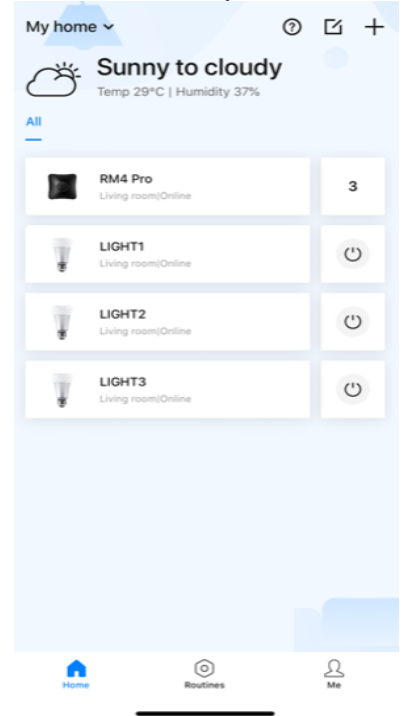
LIGHT1	LIGHT2
<b>ON</b> : Button A	<b>ON</b> : Button B
<b>Dimmer -</b> : Button C	<b>Dimmer -</b> : Button C
<b>Dimmer +</b> : Button B	<b>Dimmer +</b> : Button B
<b>OFF</b> : Button A	<b>OFF</b> : Button B

**F. 3 Gang Dimmer** (Create a new light for each gang, pls follow section I if planning to pair Dimmer with Alexa)

LIGHT1	LIGHT2	LIGHT3
<b>ON</b> : Button A (Remote 1)	<b>ON</b> : Button A (Remote 2)	<b>ON</b> : Button B (Remote 2)
<b>Dimmer -</b> : Button C (Remote 1)	<b>Dimmer -</b> : Button C (Remote 2)	<b>Dimmer -</b> : Button C (Remote 2)
<b>Dimmer +</b> : Button B (Remote 1)	<b>Dimmer +</b> : Button B (Remote 2)	<b>Dimmer +</b> : Button B (Remote 2)
<b>OFF</b> : Button A or D (Remote 1)	<b>OFF</b> : Button A (Remote 2)	<b>OFF</b> : Button B (Remote 2)

**G. 1 Gang Dimmer** (Create 2 lights for each gang; one for on/off and another for dimmer +/- function)

LIGHT1	DIMMER1
<b>ON</b> : Button A	<b>ON</b> : Button B
<b>OFF</b> : Button D	<b>OFF</b> : Button C



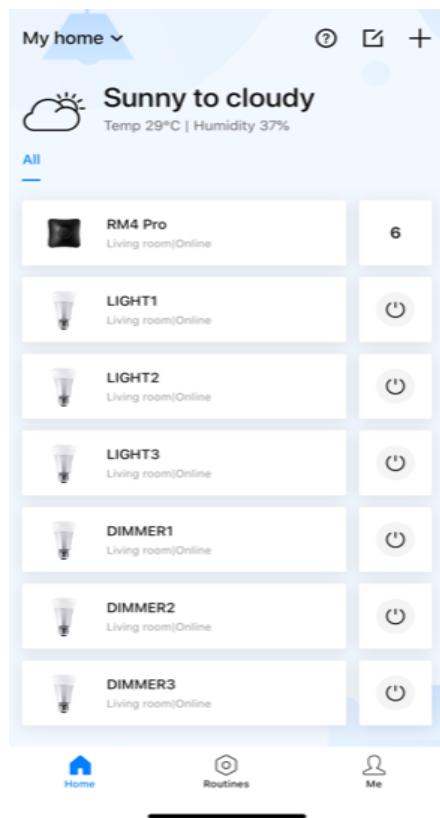
**H. 2 Gang Dimmer** (Create 2 lights for each gang; one for on/off and another for dimmer +/- function)

LIGHT1	DIMMER1	LIGHT2	DIMMER2
<b>ON</b> : Button A	<b>ON</b> : Button B	<b>ON</b> : Button B	<b>ON</b> : Button B
<b>OFF</b> : Button A	<b>OFF</b> : Button C	<b>OFF</b> : Button B	<b>OFF</b> : Button C

**I. 3 Gang Dimmer** (Create 2 lights for each gang; one for on/off and another for dimmer +/- function)

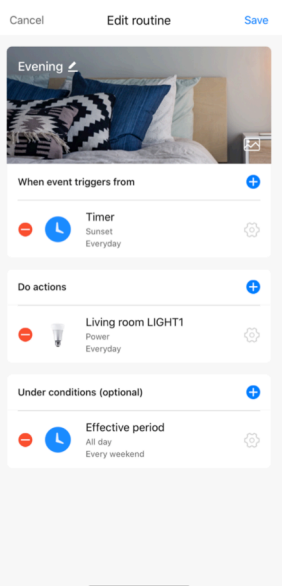
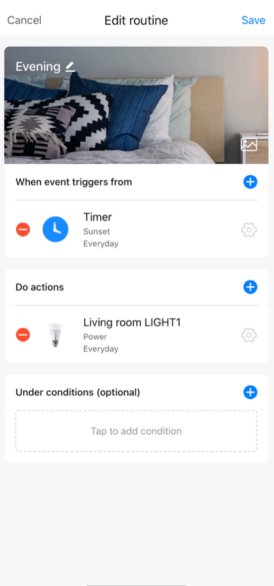
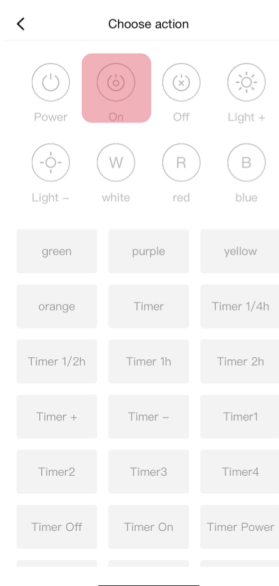
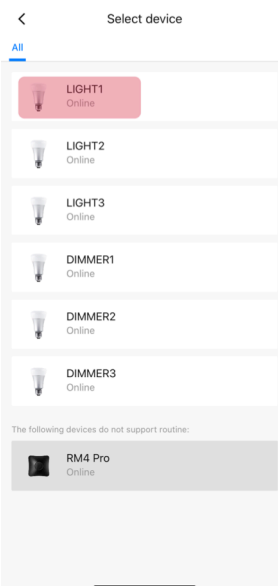
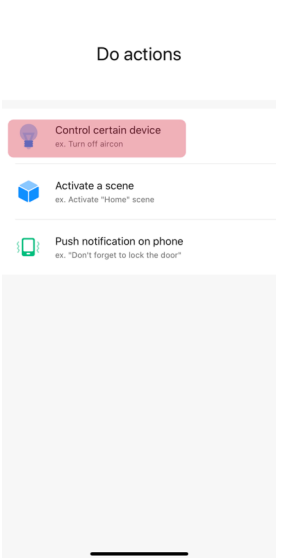
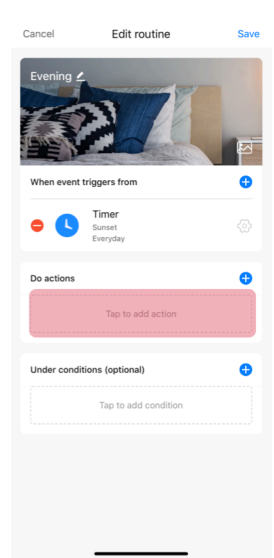
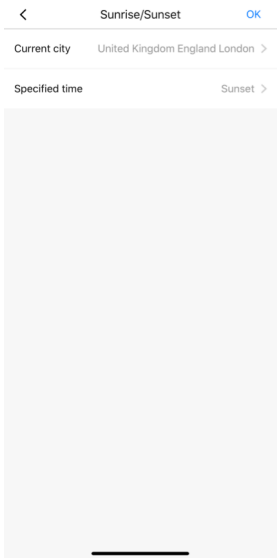
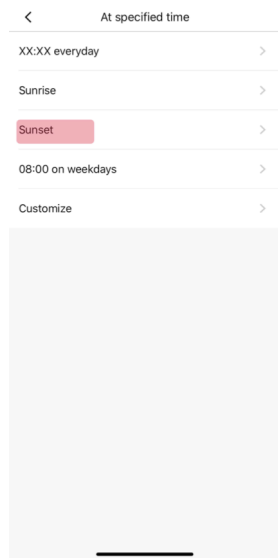
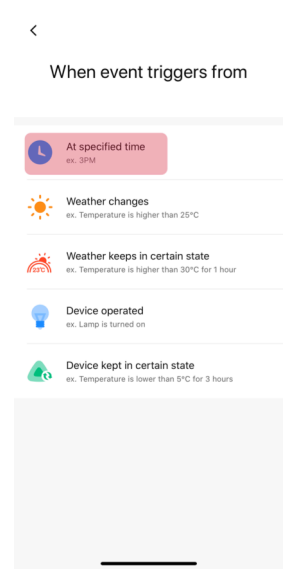
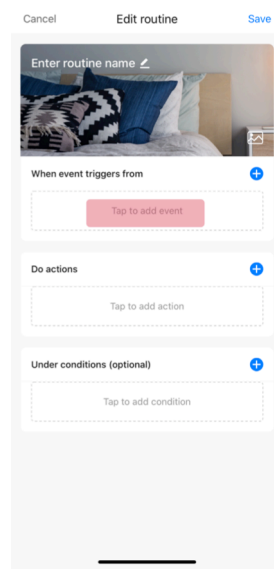
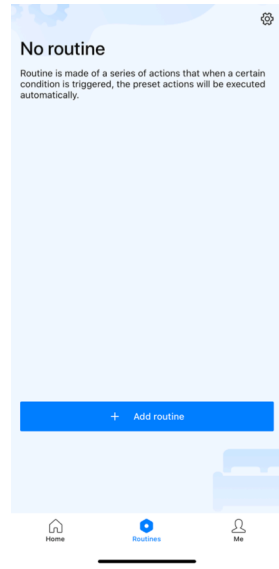
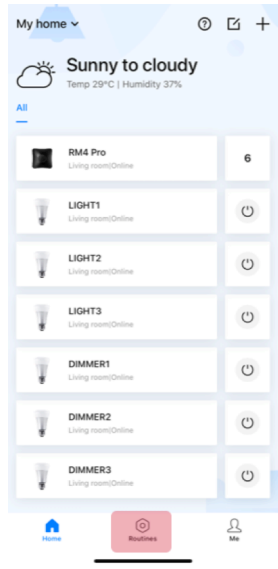
LIGHT1	DIMMER1	LIGHT2
<b>ON</b> : Button A (Remote 1)	<b>ON</b> : Button B (Remote 1)	<b>ON</b> : Button A (Remote 2)
<b>OFF</b> : Button A or D (Remote 1)	<b>OFF</b> : Button C (Remote 1)	<b>OFF</b> : Button A (Remote 2)

DIMMER2	LIGHT3	DIMMER3
<b>ON</b> : Button B (Remote 2)	<b>ON</b> : Button B (Remote 2)	<b>ON</b> : Button B (Remote 2)
<b>OFF</b> : Button C (Remote 2)	<b>OFF</b> : Button B (Remote 2)	<b>OFF</b> : Button C (Remote 2)



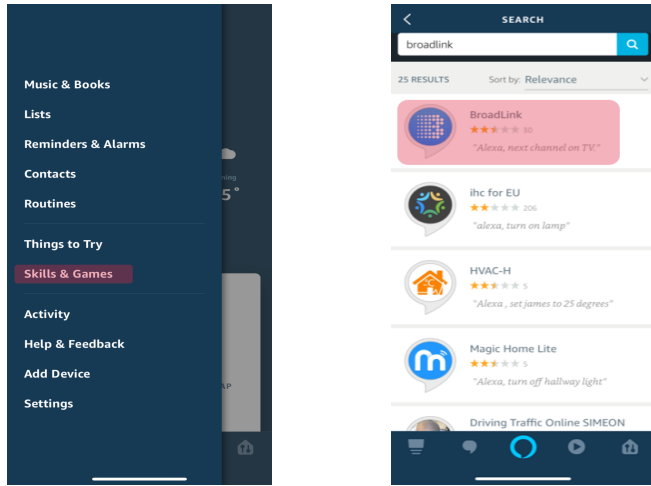
**10 Optional – How to create Routines in Broadlink for Google Assistant and Amazon Alexa (Routine allows user single command to set a predefined configuration of single or more actions to a desired state)**

Please find the routine set up below for “ Switch On LIGHT1 when it is Sunset at London every weekend” as an example. You can set any routine with multiple conditions and multiple devices with the same principle.

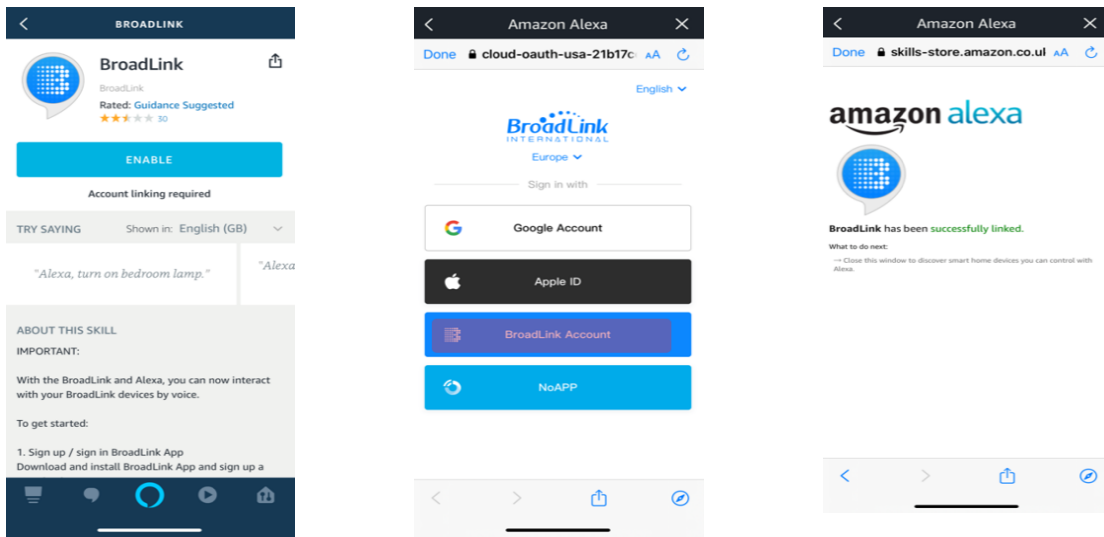


### STEP3A- PAIRING KONOQ+ WITH AMAZON ALEXA

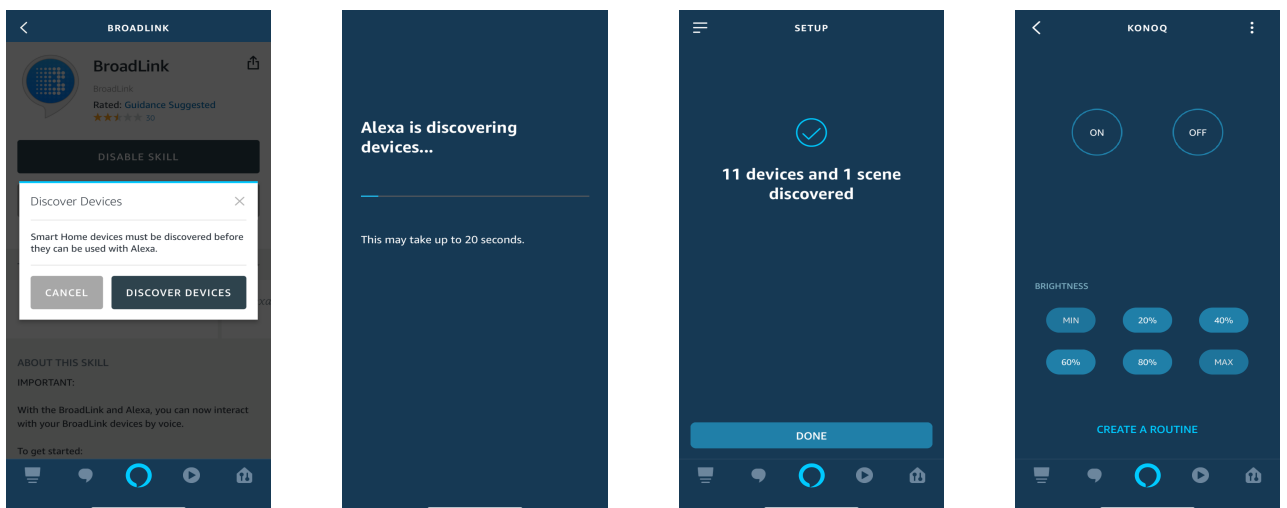
1) In Amazon Alexa app, open dashboard and choose skills & games. Find “Broadlink” by search bar.



2) Click Enable and link Alexa with Broadlink with your same credentials in Broadlink App in next two screens



3) After successful synchronization, click discover devices or voice command “Alexa, discover devices” and wait until related all lamps are found. After light is discovered, test the app by either directly speaking to Alexa or click lights and choose the related light. First check on and off button to ensure synchronization has been done correctly.

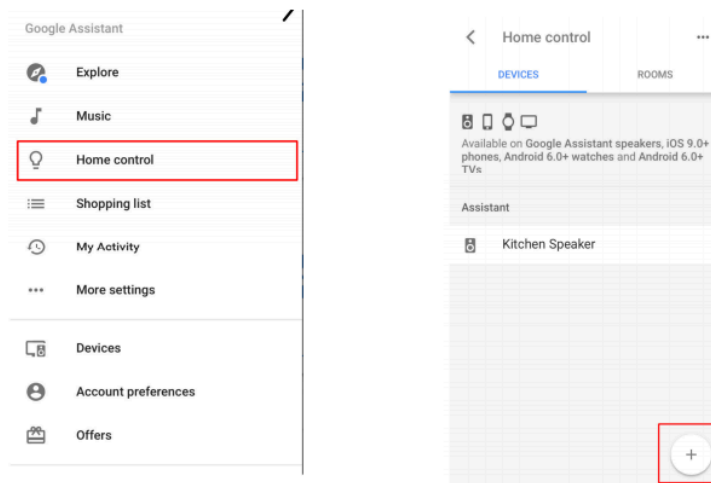


### Alexa Pairing Notes:

- Same and unique name assigned during Broadlink set up above needs to be called when using voice command like: “Alexa, switch on Light1” or “Alexa Light1 on”. You can assign different names such as: “Kitchen”, “Living room light” etc.
- Also Alexa will not recognize if there are more lights named same such as in case “Light1” is assigned for both kitchen and living room. Each light should be assigned a unique name to be able to integrate with Amazon.
- Dimmer commands are currently are not supported by Alexa. In order to work around please follow G-I in step 2-6 above. After light and dimmer function is paired correctly; “Alexa, switch on Light1” will switch on and “Alexa, switch off Light1” will turn off related light “Alexa, switch on Dimmer1” will dim up and “Alexa, switch off Dimmer1” will dim down related light
- Reference to Scenes (step 7 above) Alexa will also discover all routines created. Voice command to activate scene will be “Alexa, turn on – Related Routine Name- “.

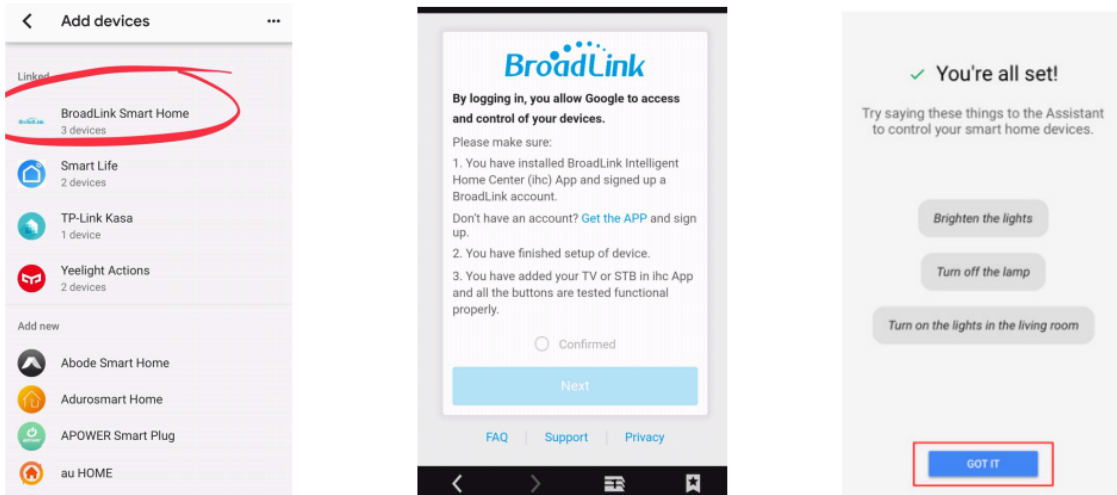
### STEP3B- PAIRING KONOQ+ WITH GOOGLE HOME

1) Open Google Home App and select Home Control



2) Select Broadlink Smart Home under Add Devices. Link accounts by entering Broadlink login details.

3) Once Broadlink accounts are linked, you should see a list of all scenes you have created. Click “got it” button.



4) Command to control related scene will be “ Hey Google, -scene name-“.

Pls note that you can also add scenes to rooms that are specific to Google Home (so you can control multiple devices with a single voice command).

<p><b>For further information:</b>  <b>www.konoq.com</b>  <b>info@konoq.com</b>  <b>0207 476 6375</b></p>	 <b>SCAN ME</b>	<p><b>iSwitch Design LTD</b> <b>3 Thames Road</b> <b>London, E16 2EZ</b></p>
--	---	--