



# Instruction Manual

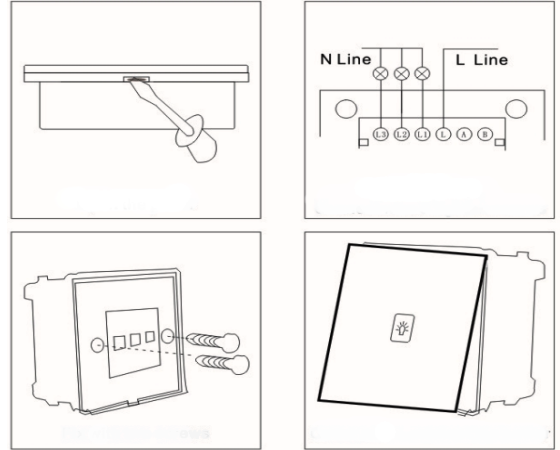
Touch, Remote and WIFI via Broadlink Models

**DON'T INSTALL WITH POWER. Before commencing installation, isolate your mains electric supply.**

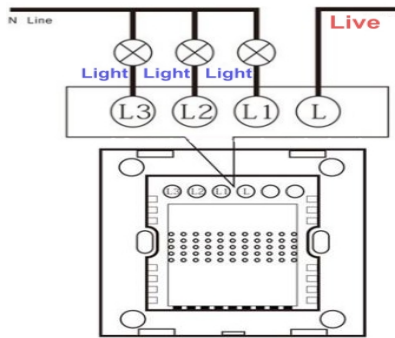
Read the instructions carefully before starting the installation process and keep them for future reference. This product must be installed by a qualified electrician. This product should be installed in accordance with the relevant sections of the building regulations code, and the current edition of the IEE Wiring Regulations (BS 7671:Requirements for electrical installations) and appropriate statutory regulations. Do not exceed the maximum power rating detailed in the specification over leaf.

## Installation

- 1) Remove the glass panel of a touch remote switch. Using a small flat screwdriver remove the front cover by placing the screwdriver in the location notch on the bottom part of the cover and twist to unclip the cover
- 2) **Turn off the main** and connect wires as described in the related diagram below. Push wires firmly into terminals and tighten terminal screws so that wires are held securely.
- 3) Use the screws supplied to attach switch to back box using a flat head screwdriver
- 4) Reattach the glass panel: Align the glass panel over the switch and firmly push to click into place.



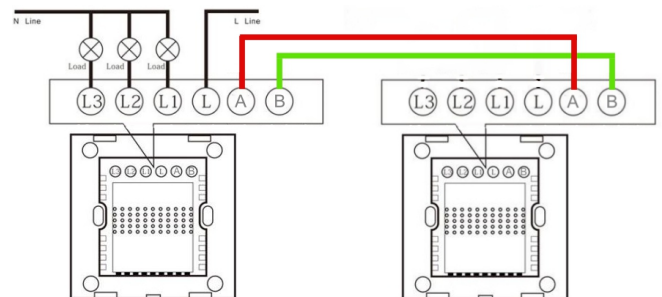
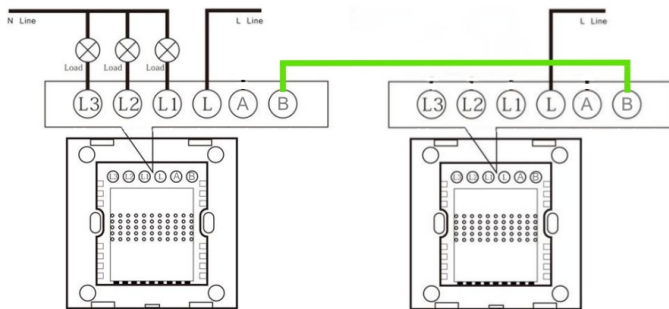
### 1Way wiring map



### 2Way / Intermediate wiring map

**(Both master and slave switches connected to live)**

**(Slave shares live from master switch)**



## 2 Way Wiring Notes

- 1) B to B wiring is the communication line (common line)
  - 2) A to A wiring is only required if live is shared between master and slave switches (leave blank if both have own live).
- Do not cross A and B ports** (if cross, switches could be damaged)
- 3) Any of the gang between master and slave switch could be paired. Leave L1/L2/L3 blank on slave switch for paired gangs.

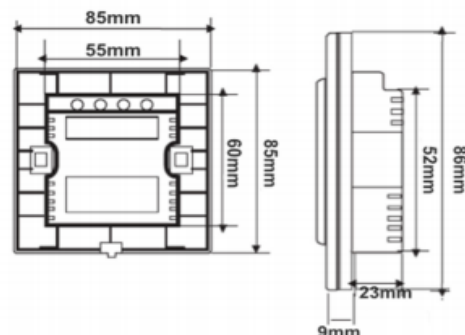
## 2 Way Pairing Process

- 1) Press and hold on a gang on the master switch for 5 seconds until the background light flashing.
  - 2) Within 60 seconds touch (not hold) the correspondent gang on the second switch you want to pair with master switch. Study completed when background lights flashing completed.
- You can pair gangs in any order such as (L1 with L1 or L2 with L3)
- 3) Repeat the process for all gangs you want. Unpaired gangs will work as one way.
- Un-pairing: Press and hold the gang for 10 seconds until the second background lights flashing.

## Specifications

Dimensions	86 x 86 x 25mm (Fits in to standard UK 35mm depth back box)
Glass Thickness	4mm
Glass Material	Tempered Toughened / Scratch Resistant
Compatible Lights	LED - Halogen - Energy Saving - Fluorescent
Rated Voltage	110V - 250V AC
Rated Frequency	50 / 60 HZ
Rated Power	On/Off Type: 3 - 600W per Gang. Up to 2000W per switch Dimmer Type: 3 - 500W per Gang. Up to 2000W per switch
Power Supply	Single Live Line except WIFI Integrated Models Null and Live Line for WIFI Integrated Models
Touch Response Rate	50ms
Remote Control Frequency	433mhz or 315mhz
Remote Control Distance	30 meters in open area
Mechanical Life	Min 100,000 on/off

## Dimensions



## Touch Control Instructions

### On/Off Switch

Touch the circle once to turn on (backlight is red), touch the circle again to turn off (backlight is green).

### Dimmer Switch

Touch the circle once to turn on and off.

Touch and hold the circle to dim up gradually and repeat the same for dim down gradually.

With intelligent memory function, the next touch will remember the brightness of the last lamp closure

Backlight will be red when loads on.

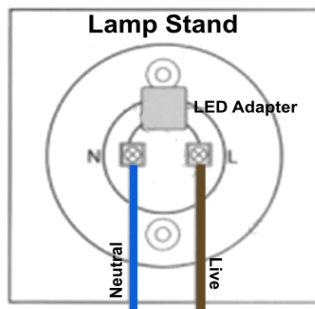
## WIFI via Broadlink Set Up Instructions

Please scan the QR code below for WIFI via Broadlink set up instructions including Alexa and Google set up instructions.



## Led Adapter Installation

(Required only if LED is less than 5W or pool quality and flickering)



Connect LED adapter between L and N of the lamp holder. There is no positive or negative terminal on the adapter so it can be installed either way. One adapter is required per light or first light in a serial connection in case several LEDs are connected in serial.

## Remote Control Instructions

### Pairing Instructions

1) Press and hold the first circle/gang on the switch for 5 seconds.

2) Press Button A on the remote to pair.

(Repeat the same process for Button B with the second gang and Button C with the third gang if applicable.)

### Only for 3 Gang Remote Dimmers

3 gang dimmer is controlled with two remote controllers

Pair Remote1 A with first gang and B with second gang

Pair Remote2 A with third gang.

*Unpairing: Press and hold the related circle for 10 seconds.*

### On/off switch remote operation

Button A: Switch On&Off First Gang

Button B: Switch On&Off Second Gang

Button C: Switch On&Off Third Gang

Button D: Switch Off All

### 1 gang dimmer switch remote operation

Button A: Switch On&Off

Button B: n/a

Button C: Dim Up

Button D: Dim Down

### 2 gang dimmer switch remote operation

Button A: Switch On&Off First Gang

Button B: Switch On&Off Second Gang

Button C: Dim Up

Button D: Dim Down

### 3 gang dimmer switch remote operation

First remote controller operates first and second gangs

Button A: Switch On&Off First Gang

Button B: Switch On&Off Second Gang

Button C: Dim Up

Button D: Dim Down

Second remote controller operates third gang

Button A: Switch On&Off Third Gang

Button B: Dim Up

Button C: Dim Down

Button D: Switch Off

For further information:



[www.konoq.com](http://www.konoq.com)



[info@konoq.com](mailto:info@konoq.com)



0207 476 6375



SCAN ME

**iSwitch Design LTD**  
Unit 2, 210 Church Road  
Leyton, London, E10 7JQ