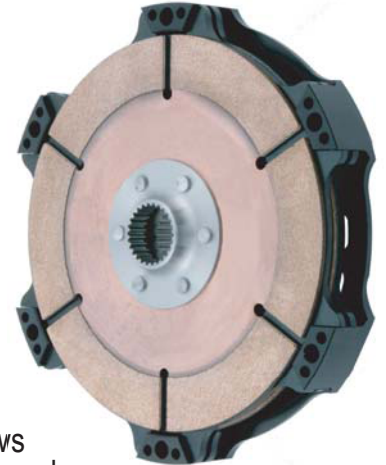


# 7.25" Power-V Racing Clutch

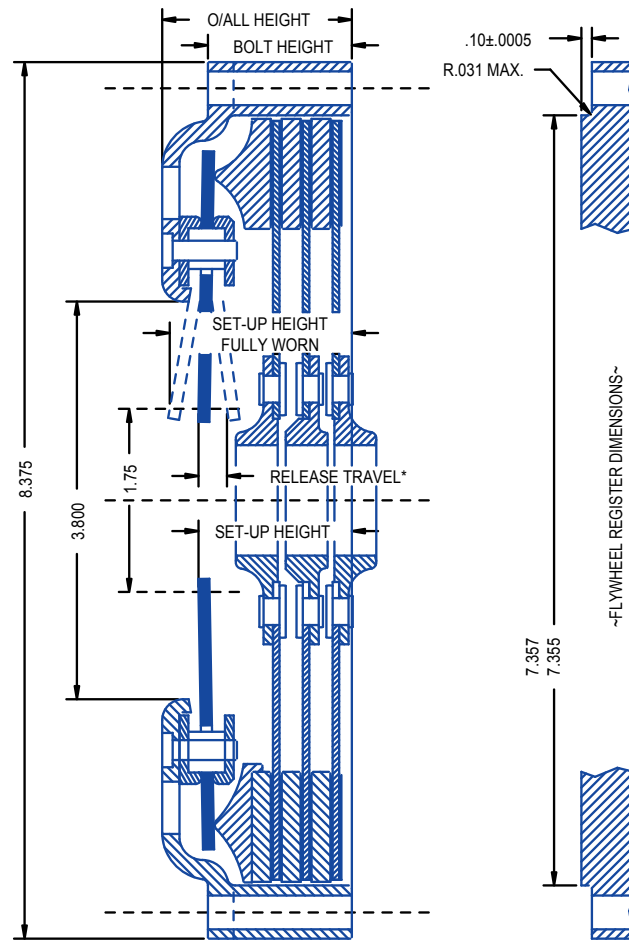
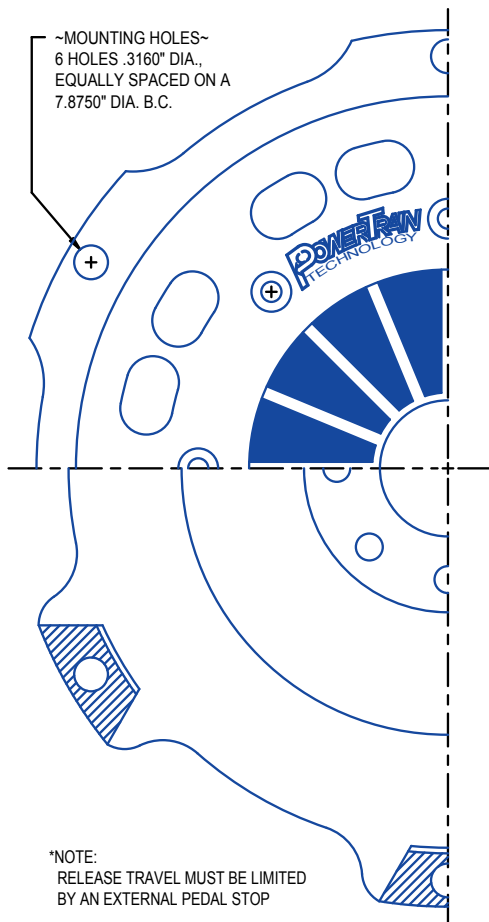


PTT's 7.25" Power-V racing clutches are the most economical way to get into a true racing clutch. They have all the same race winning qualities and reliability of PTT's 5.5" and 4.5" clutches. PTT's clutches feature proprietary, micro finished, friction material. They do not require bedding-in, they have longer life as a result, and have a smooth easy-driving engagement.

The PTT 7.25" Power-V Racing clutch features the Power-V drive system. PTT President Steve Fox invented this technology for modern racing clutches back in 1997. The benefits of this type of drive are many. The angled Power-V drive legs make the floater plates self centering. They even out the drive forces in the clutch, and provide inherent dynamic balance. The resulting increased surface area of the Power-V lowers stress in the clutch as well, allowing longer life of component parts.



A PTT 7.25" clutch has a much lower MOI than a stock style clutch and up to 20% lower than other manufacturers' equivalent racing clutches. This lower MOI allows faster acceleration, decreased brake wear on deceleration, quicker shifting, and reduced syncro, or dog ring wear, in your transmission. The advantages of reduced MOI can be a big advantage to your race program. Changing from a 10.5" stock clutch to a 7.25" clutch will feel like your engine makes an extra 25 horsepower.



NUMBER OF DISCS	RECOMMENDED MAX. ENGINE TORQUE		SET-UP HEIGHTS		RELEASE TRAVEL*	MEASURED HEIGHTS		DISC THICKNESS	ASSEMBLED WEIGHT	MOMENT OF INERTIA
	NEW	FULLY WORN	O/ALL	BOLT HEIGHT		NEW	FULLY WORN			
1 x .705"	300 lb./ft.	1.13"	1.24"	0.80"	0.30"	0.105"	0.075"	5.4 lbs	50.5	
1 x .750"	300 lb./ft.	1.19"	1.33"	0.88"	0.30"	0.200"	0.170"	5.8 lbs	54.0	
1 x .750"	300 lb./ft.	1.24"	1.38"	0.93"	0.30"	0.250"	0.220"	6.0 lbs	56.4	
2 x .105"	600 lb./ft.	1.41"	1.53"	1.08"	0.30"	0.105"	0.090"	7.7 lbs	70.5	
2 x .200"	600 lb./ft.	1.33"	1.71"	1.26"	0.30"	0.200"	0.195"	8.5 lbs	76.0	
2 x .250"	600 lb./ft.	1.46"	1.81"	1.37"	0.30"	0.250"	0.235"	8.8 lbs	82.3	
3 x .105"	900 lb./ft.	1.74"	2.09"	1.66"	0.30"	0.105"	0.095"	9.9 lbs	90.6	
3 x .200"	900 lb./ft.	1.74"	2.09"	1.66"	0.30"	0.200"	0.190"	11.3 lbs	107.3	
4 x .105"	1200 lb./ft.	1.74"	2.09"	1.66"	0.30"	0.105"	0.097"	12.3 lbs	110.6	

Put "THE POWER" to work for you!

www.PowerTrainTech.com

# 7.25" Power-V Racing Clutches

## 7.25" Open Style Clutch Units

xx = spline size. See Spline Listing in Resources and in the Application Guide.



7.25" 3 Disc Clutch

xx = Spline Size (see Spline Listing in Resources)

### 7.25" Clutch (no flywheel)

Application	No. of Discs	Friction Material	Spline=xx	Pressure Plate			
				Steel Pressure Plate	Alum. P.Plt. w/ LtWt Floaters	Hi-Torque Steel P.Plt.	Hi-Mass Steel P.Plt.
All	1	Metallic .105" Thick	See List	CH116A1Axx	CH116A3Axx	CH116A7Axx	CH116A9Axx
All	2		See List	CH216A1Axx	CH216A3Axx	CH216A7Axx	CH216A9Axx
All	3		See List	CH316A1Axx	CH316A3Axx	CH316A7Axx	CH316A9Axx
All	4		See List	CH416A1Axx	CH416A3Axx	CH416A7Axx	CH416A9Axx
All	1	Metallic .200" Thick	See List	CJ126A1Axx	-	CJ126A7Axx	CJ126A9Axx
All	2		See List	CJ226A1Axx	-	CJ226A7Axx	CJ226A9Axx
All	3		See List	CJ326A1Axx	-	CJ326A7Axx	CJ326A9Axx
All	1	Metallic .250" Thk	See List	CJ136A1Axx	-	CJ136A7Axx	CJ136A9Axx
All	2		See List	CJ236A1Axx	-	CJ236A7Axx	CJ236A9Axx
All	1	Organic .200" Thick	See List	CJ176A1Axx	-	CJ176A7Axx	CJ176A9Axx
All	2		See List	CJ276A1Axx	-	CJ276A7Axx	CJ276A9Axx
All	3		See List	CJ376A1Axx	-	CJ376A7Axx	CJ376A9Axx
All	1	Organic .250" Thk	See List	CJ186A1Axx	-	CJ186A7Axx	CJ186A9Axx
All	2		See List	CJ286A1Axx	-	CJ286A7Axx	CJ286A9Axx



Aluminum Pressure Plate with Lightweight Floater Plate

All part numbers shown above are for standard clutch hub configuration. For additional clutch options see "Clutch Assembly Part Numbering System" chart in our Application Guide.

## 7.25" Clutch & LtWt Button Flywheel Assembly

Includes clutch bolt kit



Early Model = 1985 & earlier, 2 piece rear main seal. Late Model = 1986 to 1997, 1 piece rear main seal.

### 7.25" Clutch & Button Fly

All Friction Material is Metallic .105" Thick. Call for other Friction Material options.

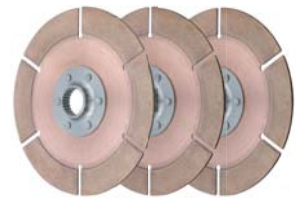
Application	Number of Discs	Spline	Steel Pressure Plate	Alum. P.Plt. w/ LtWt Floaters	Alum. P.Plt. w/ LtWt Floaters and Super LtWt Drilled Btn Fly
Chevy SB V-8 Early Model	2	10 Tooth	KH2128	K72128	K72128S
		26 Tooth	KH2129	K72129	K72129S
	3	10 Tooth	KH3128	K73128	K73128S
		26 Tooth	KH3129	K73129	K73129S
Chevy SB V-8 Late Model	2	10 Tooth	KH2828	K72828	K72828S
		26 Tooth	KH2829	K72829	K72829S
	3	10 Tooth	KH3828	K73828	K73828S
		26 Tooth	KH3829	K73829	K73829S
Chevy SB V-8 Late Model Ext. Bal. (Crate Motor)	2	10 Tooth	KH2928	K72928	K72928S
		26 Tooth	KH2929	K72929	K72929S
	3	10 Tooth	KH3928	K73928	K73928S
		26 Tooth	KH3929	K73929	K73929S
Chevy LS V-8	2	10 Tooth	KH2028	K72028	K72028S
		26 Tooth	KH2029	K72029	K72029S
	3	10 Tooth	KH3028	K73028	K73028S
		26 Tooth	KH3029	K73029	K73029S
Ford SB V-8	2	10 Tooth	KH2328	K72328	K72328S
		26 Tooth	KH2329	K72329	K72329S
	3	10 Tooth	KH3328	K73328	K73328S
		26 Tooth	KH3329	K73329	K73329S

# 7.25" Clutch Packs

xx = spline size. See Spline Listing  
in Resources and in the Application Guide.

## 7.25" Discs

Application	Number of Discs	Spline=xx	Friction Material				
			Metallic .105" Thick	Metallic .200" Thick	Metallic .250" Thick	Organic .200" Thick	Organic .250" Thick
All	1	See List	PH116Axx	PH126Axx	PH136Axx	PH176Axx	PH186Axx
All	2	See List	PH216Axx	PH226Axx	PH236Axx	PH276Axx	PH286Axx
All	3	See List	PH316Axx	PH326Axx	-	PH376Axx	-
All	4	See List	PH416Axx	-	-	-	-



3D x .105" thick metallic



2D x .250" thick organic

All part numbers shown above are for standard clutch hub configuration.

For additional clutch pack options see "Replacement Clutch Pack Part Numbering System" in our Application Guide.

## 7.25" Button Flywheels

Early Model = 1985 & earlier, 2 piece rear main seal. Late Model = 1986 to 1997, 1 piece rear main seal.

Universal	LtWt, Button Style, Blank (No crank bolt holes & small center bore, .84" OAL)	FH001
Chevy SB V-8 Early Model	LtWt, Button Style, Chevy SB V-8 Early Model	FH101
	Super LtWt, Drilled, Button Style, SB V8 Early Model	FH106
Chevy SB V-8 Late Model	LtWt, Button Style, Chevy SB V-8 Late Model	FH103
	Super LtWt, Drilled, Button Style, SB V8 Late Model	FH107
	LtWt, Button Style, Externally Balanced for Crate Motor	FH1031
	Super LtWt, Drilled Button Style, Externally Balanced for Crate Motor	FH1071
	Balance Weight Only	EB104
Chevy LS V-8	LtWt, Button Style, Chevy LS V-8	FH105
	Super LtWt, Drilled, Button Style, Chevy LS V-8	FH108
Chrysler	LtWt, Button Style, Chrysler, 6 Bolt	FH203
Ford SB V-8	LtWt, Button Style, Ford SB V-8	FH301
	Super LtWt, Drilled, Button Style, Ford SB V-8	FH302
Flywheel Bolts	Chevy, Ford, Chrysler SB V-8	NK407076
	Chevy LS1 V-8	NK400076



LtWt Button Fly



Super LtWt Drilled Button Fly



Flywheel Bolts

## 7.25" Replacement Clutch Spare Parts

Cover Assembly (no discs, floater plates or pressure plate)	Clutch Cover Assembly, 1 Disc X .105"	CH101
	Clutch Cover Assembly, 1 Disc X .200"	CH121
	Clutch Cover Assembly, 1 Disc X .250"	CH1251
	Clutch Cover Assembly, 2 Disc X .105"	CH201
	Clutch Cover Assembly, 2 Disc X .200"	CH221
	Clutch Cover Assembly, 3 Disc X .105" (or 2 Disc x .250")	CH301
	Clutch Cover Assembly, 4 Disc X .105" (or 3 Disc x .200")	CH401
Pressure Plates	Pressure Plate, Steel, Standard Fulcrum (6.2" diameter fulcrum, .535" tall)	CH031
	Pressure Plate, Steel, Hi-Torque (6.0" diameter fulcrum, .535" tall)	CH032
	Pressure Plate, Aluminum, Standard Fulcrum	CH035
	Pressure Plate, Steel, Hi-Mass, Standard Fulcrum	CH038
Floater Plates	Floater Plate	CH041
	Floater Plate, LtWt (round holes)	CH042
	Floater Plate, Super LtWt (triangular holes)	CH043



7.25" Cover Assembly



Pressure Plate

## Bolt Kits for 7.25" Clutches

NK105126	Bolt Kit, 1 Disc
NK105146	Bolt Kit, 2 Disc
NK1051660	Bolt Kit, Mitsubishi 2D

NK105166	Bolt Kit, 3 Disc
NK105186	Bolt Kit, 4 Disc

