



**Destroyer 750/ 750S / BLVD**  
Assembly Manual UPDATED 1/23



Welcome to the Wicked Thumb Army and congratulations on taking ownership of your new **Destroyer 750!!**

Over the next dozen or so pages we will go over everything you need to know to get your bike uncrated, assembled and ready for it's maiden voyage.

Your safety is our number one priority. As such, if at any point during the assembly (including right now!), if you are unsure of your ability to assemble the bike in a safe fashion, we strongly suggest taking it to your local bike shop, where they will be able to safely complete the process, while also checking for anything that may have loosened up during transit and tuning specific systems to your riding ability and preference.

Before continuing any further, if there is any severe damage to the outside of the carton, please take pictures before removing the bike and send them to [support@wickedelectricbikes.com](mailto:support@wickedelectricbikes.com). Time is of the essence if there is carrier related damage to your new bike.

Let's get started!

#### TOOLS NEEDED FOR ASSEMBLY:

Scissors

13mm crescent wrench (provided)

15mm crescent wrench (provided)

4mm allen key (provided)

5mm allen key (provided)

Tire pump

In the box:

1. **Destroyer 750** Electrocycle
2. Front Wheel Assembly
3. Handlebars w/controls
4. Seat assembly
5. Pedals
6. Headlight
7. Battery Charger
8. 4mm/5mm allen wrench
9. 13/15mm crescent wrench

# IMPORTANT

IT IS NOT UNCOMMON FOR THE OUTER CARTON TO ARRIVE DAMAGED. WE PACK THE BIKE VERY SECURELY, BUT IT IS INEVITABLE THERE IS OCCASIONAL DAMAGE IN SHIPPING.

IF THERE IS DAMAGE TO YOUR BOX:

**TAKE PICTURES OF ALL 6 SIDES PRIOR TO OPENING. FAILURE TO DO SO MAY VOID ANY DAMAGE CLAIMS.**

AFTER TAKING PICTURES OF THE OUTER CARTON, OPEN THE BOX AND

**TAKE PHOTOS SHOWING THE INNER PACKING BEFORE REMOVING ANY COMPONENTS FROM THE BOX.**

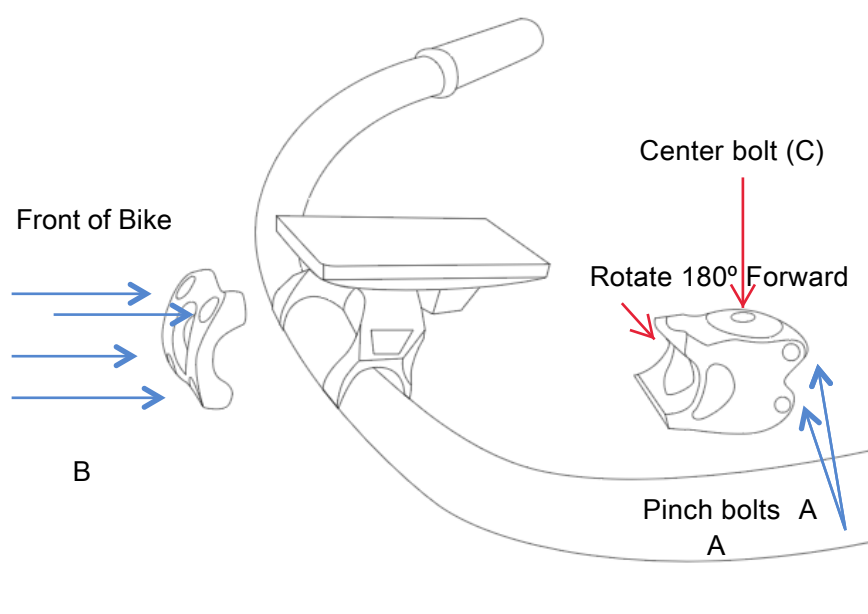
CAREFULLY INSPECT YOUR BIKE FOR DAMAGE. NOTE ANY DAMAGE.

**IF YOU NOTICE ANY DAMAGE TO ITEMS SUCH AS THE FENDERS, FORKS, CHAINRING, BRAKES, ETC. DO NOT RIDE YOUR BIKE UNTIL YOU HAVE BEEN CLEARED BY WICKED THUMB CUSTOMER SUPPORT.**

RIDING A DAMAGED BIKE AND THEREFORE CAUSING FURTHER DAMAGE WILL VOID YOUR WARRANTY ON THE ADDITIONAL DAMAGED PARTS.

IF EVERYTHING LOOKS GOOD ON INSPECTION, CONTINUE WITH THE REST OF THIS MANUAL AND ASSEMBLE YOUR BIKE AS INSTRUCTED.

First remove seat assembly and lift accessory box out from next to rear wheel. Set aside. Cut corners on long side of box and fold down to create a work surface. remove all zip ties and packing material.



## Attach Handle Bars

When moving bars be careful not to pull right brake lever closed until the front wheel has been installed.

Please reference diagram above for installing handlebars. Using the Supplied 4mm Allen Wrench, Slightly Loosen Pinch Bolts (A) and **ROTATE HANDLEBAR STEM 180 DEGREES SO 4 ALLEN BOLTS ARE FACING FORWARD.**

You may also need to very slightly loosen the center bolt of the stem (C) to turn the neck. Remove the dust cap to access the bolt. **Please be sure to Retighten center bolt (C) FIRST after rotating the stem forward.**

Tighten to **6 foot pounds**. Replace dust cap. Tighten the pinch bolts by hand (A) to **6 foot lbs** to lock the stem in place.

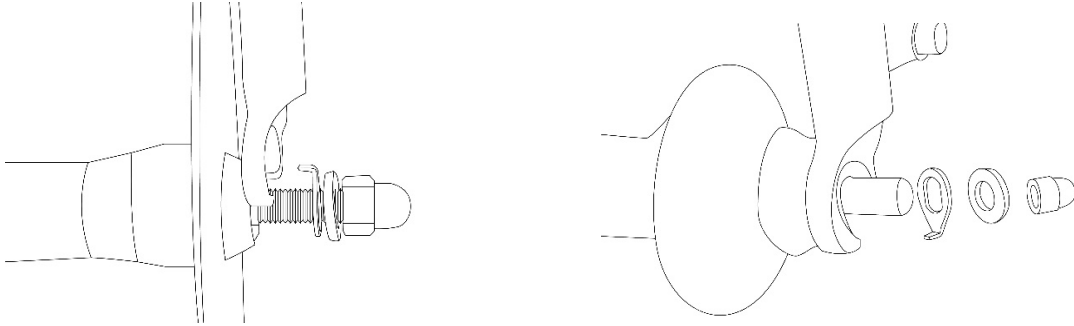
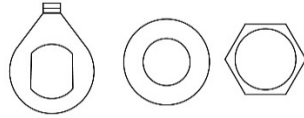
**DO NOT OVERTIGHTEN**

Next, remove the 4 allen bolts ( B ) and gently remove front of handlebar clamp. Center handlebars into rear clamp and reinstall front clamp using 4 bolts removed from prior step. Tighten just enough to hold bars in place.

Continue to installation of front wheel.

**After you have installed wheel, stand over bike and Adjust handle bar angle to your personal comfort level. Fasten the 4 handlebar clamp bolts in an X pattern so they are snug plus 1/4 turn . MAKE SURE HANDLEBARS ARE SECURE, BUT DO NOT OVERTIGHTEN!**





## Install Front Wheel

Loosen front axle nuts and slide washer and lock tab out towards loose nut (**Suspension Fork/Springer Models will not have a lock tab**). *For 750S Model Front Brake Assembly Goto Appendix A.*

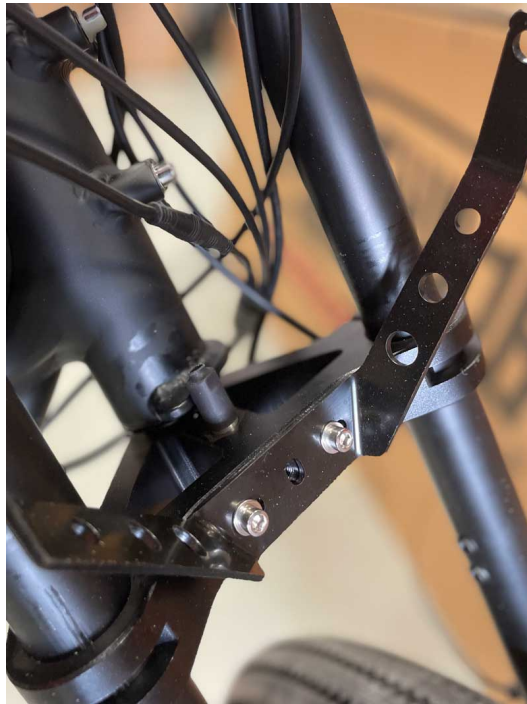
Align the front brake disc into center of front brake pads and lower front forks down onto axle. Rotate lock tab to the one o'clock position and insert lock tab into hole on fork. Tighten front axle nuts by hand.

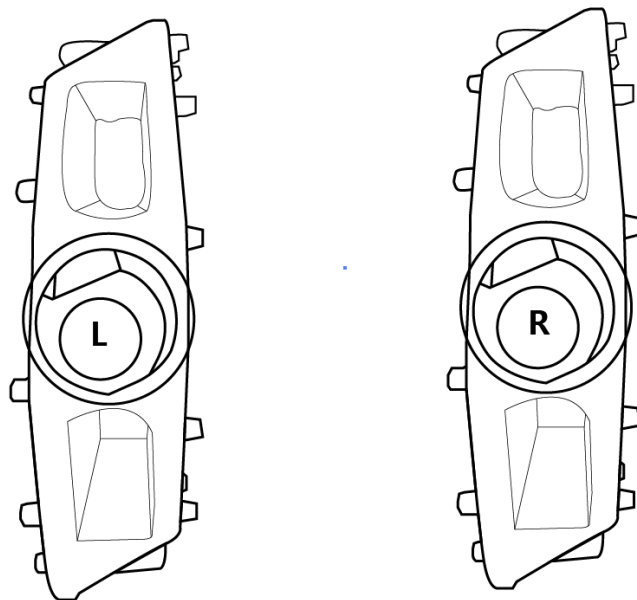
Slowly depress **front** brake lever until firm. Tighten front axle cap nuts with 15mm wrench until snug.

**Return to Red Print of 'Attach Handlebars' Instructions on Prior Page to Adjust Bars and Lock Down Handlebar Clamp Bolts.**

## Install Head Light

Attach the Headlight Mounting Bracket to the Lower Fork Crown Using 2 Provided Allen Head Bolts. Before Installing Head Light, Use a 13mm wrench to remove and install side bolts and washers to install head light. Rubber washers fit between headlamp housing and mounting brackets. Adjust height and angle, then fasten all the bolts. Connect the light power cable.

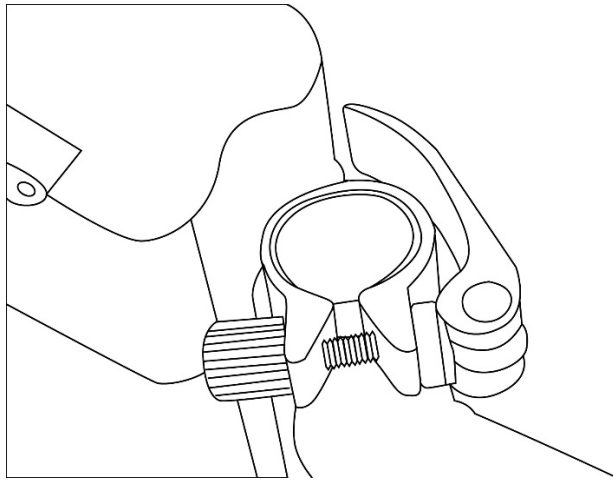
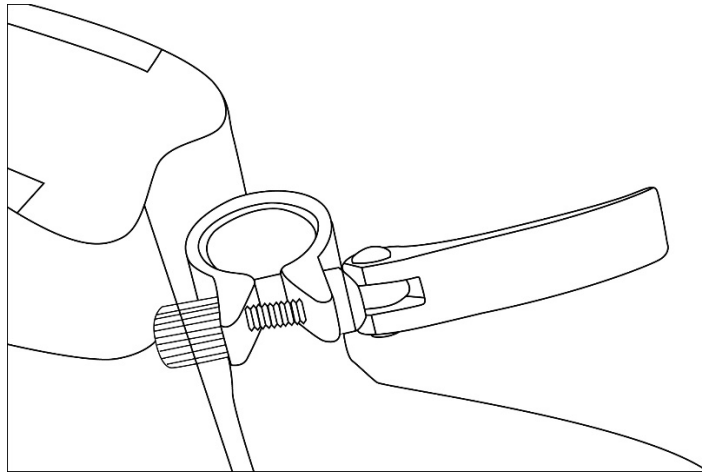




## Install Pedals

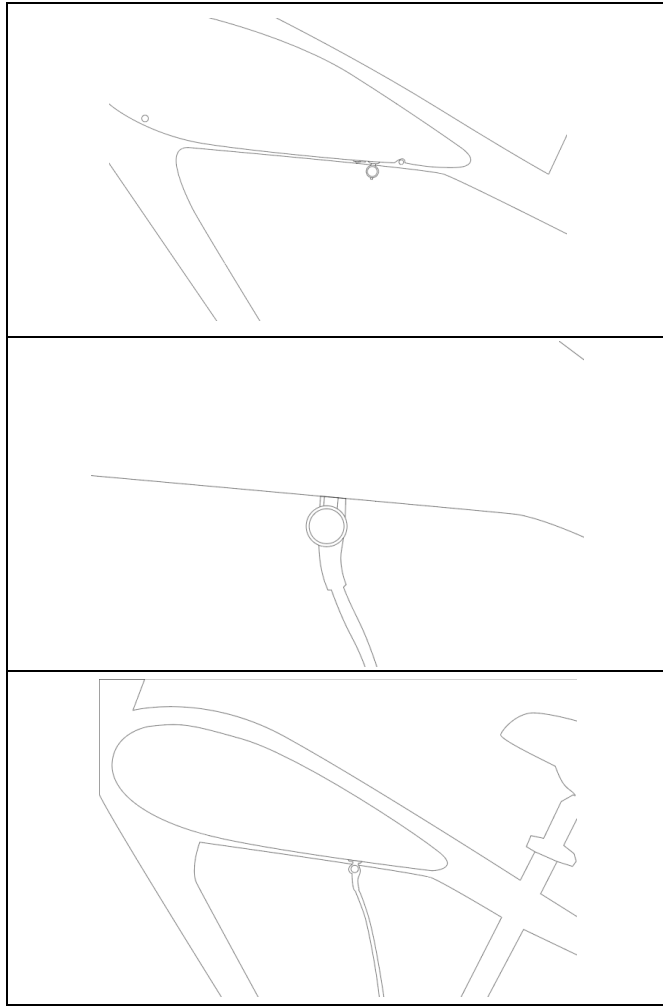
Install the pedal marked with an “L” on the left/driver's side crank. **It threads in counter-clockwise.** The pedal marked with an “R” installs on the right side crank and threads in clockwise. Be careful not to cross thread the pedals. Tighten with a 15mm wrench.





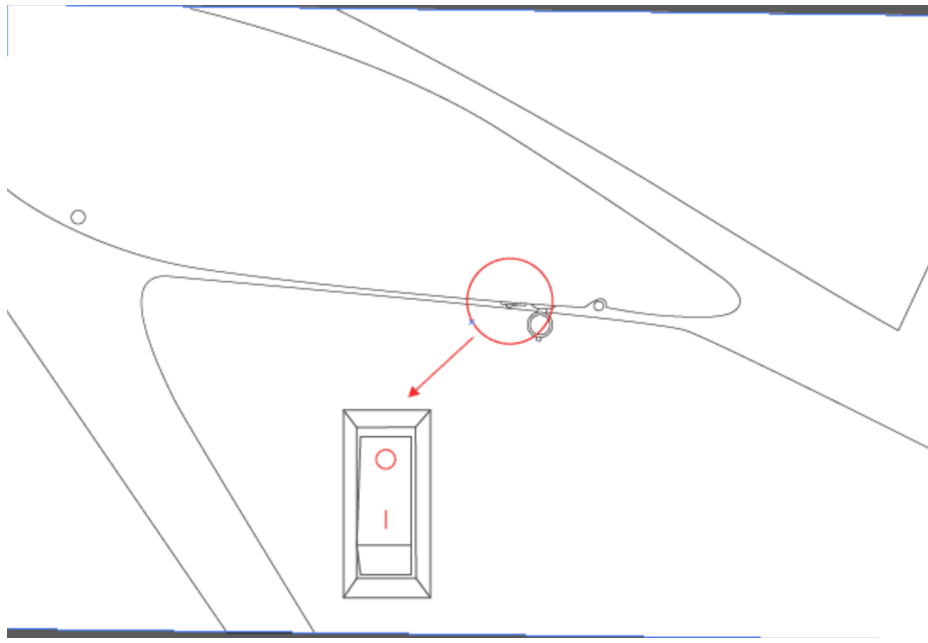
## Insert and Adjust Saddle Height

Open Clamp lever and insert seatpost into seatpost tube. Position to desired height and close clamp. If seatpost rotates, open clamp and twist one turn clockwise while holding back nut. Close again. Recheck for rotation. Repeat process again if necessary.



## Charge Battery before Your First Ride

Make sure to charge your battery to full capacity before your first ride. On the lower left side tank, remove charge port cap and insert charger plug **into battery first**. Plug charger into wall and begin charging ( red light will turn on ). When the battery is fully charged, the charger status light will turn from Red to Green. Unplug charger and replace charge port cap. The charger will stop charging and enter trickle charge mode when full, but we don't recommend leaving the charger continuously hooked up when not in use.

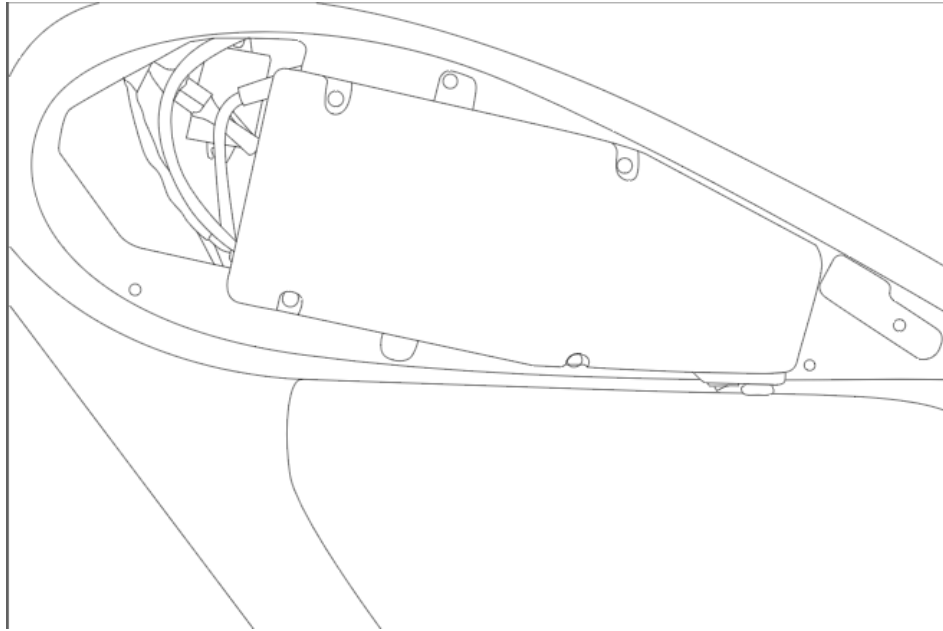


## Battery ON/OFF switch

The provided battery switch should be turned off when your bike is not in use to preserve battery life. It also serves as a kill switch in the event you need to quickly disable the motor.

## Tips to extend battery life

- Your battery is designed to last for 6-800 charge cycles if maintained properly.
- Avoid extreme temperatures to prolong battery life. Avoid heat above 115 degrees if possible. Do not store your battery near an open flame, extreme heat or any combustibles. Do not store the battery where it can be subjected to rising water. The battery should only be opened by a battery service professional or manufacturer. Opening the case will void your warranty.
- Like a gas gauge, The battery level indicator on the display screen is not always accurate (i.e. it may show 50% but only be 35% at that moment). We suggest getting a feel for your battery's life related to your specific riding habits before expecting a certain range.
- Frequent starts/stops and open throttle acceleration drain your battery much quicker than gradual changes. Rely on the pedal assist most of the time and use the throttle as necessary to get up to speed, climb hills, cross traffic etc.
- Turn the ON/OFF switch to the OFF position when parking your bike.
- For long term storage, reduce battery life to approximately 50% and remove from bike and store in a dry and moderate temperature place.
- While the bike is water resistant, This bike is NOT waterproof. Do not take it through water deeper than 7 inches, otherwise there is a risk of the controller short circuiting. Water damage is not covered by your warranty.
- Your battery should fully charge in 5-6 hours. If it hasn't fully charged within 8 hours, please contact product support at [support@wickedelectricbikes.com](mailto:support@wickedelectricbikes.com)



## Uninstall & Install Battery

To access the battery, begin by removing the two lower 4mm allen screws on the driver side (left side) tank cover.

To remove battery, use the same 4mm Allen Key to remove the 4 bolts on the battery.

Unplug both connectors at the front of the battery and carefully pull out.



## Head Light Control

Push the button down to activate low beam and up to activate high beam.  
Don't forget to switch off the light and battery when you finish riding.

## Setting your Display

To power on the bike, make sure the battery switch is turned to the on position and hold down the power on/off switch on the left handlebar. The Wicked Thumb logo will show on screen and you are ready to go.



Hold the 'SET' button for 2 seconds to enter the configuration menu. **The passcode is 2112.** Use 'SET' to save a value and move to the next field, +/- to scroll thru parameter values.  
*Ex: + 2X to select '2'; 'SET' saves '2' in field 1 and moves to field 2. + to choose '1', 'SET' to save and move to field 3. + to choose '1'. 'SET' to save and move to field 4. "+" two times to choose '2' and 'SET' to save.  
'SET' to "ENTER"*

You should not have a need to enter the settings unless you want to limit the speed of the bike, deactivate the throttle, change the mode or check an error message.



### General Settings

Option 1.1 (Trip Clear). 'SET' to Y to reset tripmeter.

1.2 (Brightness) 'SET' to select, up and down to change level.

1.3 (Speed Limiter in KM) '99' is unlocked. 34 will limit the bike to 20mph. Multiply each value by .6 to determine the mph limit (i.e 15mph is 25).

1.4 (Wheel Size) = 29 due to the fat tires. Do Not Change This.

1.5 (Unit) You can toggle between MPH and KPH



1.6 (Voltage) is 48v unless you have a 52V battery upgrade

1.7 (Mode) Choose Normal, ECO or Power

1.8 (Exit to Main Menu)



Option 2 (Advanced Settings):

Settings 2.1, 2.2 and 2.3 should NEVER be altered unless directed by Wicked Thumb support. You may render your bike inoperable and void your motor, controller and battery warranty.

2.4 (Throttle Speed) You can limit the throttle to 6km/h or unlock it

Option 2.5 (Throttle Level) default 'N' – this setting determines whether the throttle is linked to the pedal assist level. By switching to 'Y' the throttle will stay limited to the current pedal assist level.



# Your first ride

**We strongly encourage you to wear a proper fitting helmet and eyewear when riding your bike.** Trucks and cars have been known to throw a rock or two into the air, bugs have a knackering to find a way into your eyes and while it might not seem you are going that fast, falling from 5-6 feet in the air will do some unwanted remodeling to your noggin.

**WEAR A HELMET!**

Now is a great time to recheck your handlebars to make sure they won't slide forward or backwards or twist side to side independent of the wheel. Remember pinch bolts and center bolt from (Attach Handlebars Page) If bars are loose please tighten the handlebar clamp bolts slightly tighter for front to back movement and the center bolt for side to side movement.

Before taking your first ride, check the tire pressure and set to 15-20 PSI. **DO NOT EXCEED 20 PSI.** The Tube is not designed for higher PSI.

The +/- buttons will control your pedal assist (PAS) level. Default is '1'. Get used to this level first, then start moving up and down as you feel comfortable. Going down to '0' will turn the motor off. *Please see tips below.*

On your first ride, we suggest riding away from any traffic or obstructions just to be safe. Remember at any moment tapping the brakes will disengage the motor.

Tips:

1. Get used to riding the Destroyer as a regular bicycle, with no motor (PAS 0), shifting through gears, setting your seat and handlebar position and gaining an overall feel for the bike.
2. Learn to understand how much stress is on the bike when climbing hills, or starting from a stop, based upon how much stress is on your legs.

3. ***Pedal along.*** Remember the motor is there to enhance your power, not completely replace it.
4. Review our blog post on battery life [here](#)
5. After the first 100 miles, take your bike to a local bike shop (LBS) and have them perform a 100 mile tuneup/inspection. Here they will check fasteners for tightness, inspect for uneven wear, any misalignment, diagnose noises, etc. While predominantly a safety check, it's also key in preventing rapid or uneven wear to components on your bike. It's also nice to have a tech familiar with your bike throughout it's lifetime.
6. Remember to turn your lights on at night or in lower visibility settings, winding roads, fog, rain etc.

**GO HAVE FUN.** Riding a bike will forever be changed this day forward. Email or call with any questions, comments, feedback, etc.

Thank you so much for joining us on this adventure! Cheers!

-The Wicked Thumb Army

## WICKED THUMB® LIMITED WARRANTY

To make a warranty claim always keep your vehicle model, date of purchase, vehicle serial number and retailer where you purchased the vehicle from.

The warranty is limited to the terms listed below:

Motor and controller: 1 year for parts. 3 months for labor

Frame: 1 year parts and labor

Charger: 1 year for parts

Battery: **2 years**. Warranty on the battery starts the date of purchase of the vehicle as new. The battery is sealed and cannot be opened or fixed. The battery should not have a percentage of nominal charge retention of 60% or less. Misuse of the battery, negligence or attempt to open or repair it will void the warranty.

General vehicle: The vehicle is backed up by a general 1-year warranty. Certain components listed on this chart or consumables may be subject to a different period of coverage or not included in this warranty. Visit [wickedthumb.com/warranty](http://wickedthumb.com/warranty) for full warranty details.

Consumables: Components subject to wear are not covered by the warranty:  
Tires, inner tubes, brake lines, brake pads, wheel lining tape, light bulbs, LEDs, fuses, etc.

If the warranty is void for any reason the customer shall bear any repair or replacement costs resulting from vehicle misuse, negligence or abuse. Always follow care and preventive maintenance procedures. Always keep receipts from any services performed to the vehicle by an authorized distributor or service center.

The warranty will be voided by any of the following circumstances:

- (1) Failure to follow all directions or recommendations listed in this warranty and user's manual.
- (2) Cycling collision, accident or vehicle damage caused by careless parking or storage.
- (3) Acts in violation of laws and regulations.
- (4) Never performed service or maintenance on components
- (5) DIY repairs on electronic components.
- (6) Abusive use of the vehicle on off-road terrain, mud, snow, water, sand, gravel
- (7) If vehicle is used as rental unit or taxi
- (8) Damages caused by natural disasters such as earthquakes, lightning, fire, flooding and other hazards .
- (9) Rust and/or paint fading caused by heavy exposure to rain, hail, snow or sunlight.
- (10) Overloading beyond recommended capacity .
- (11) Damages caused by nails, needles, broken glass , debris , sharp rocks or other foreign objects .
- (12) If vehicle is used for stunts, jumping from ramps, stairs or elevated surfaces.
- (13) If vehicle is used in competition or racing
- ( 14 )If motor, electrical system, suspension frame, wheels have been modified for any purposes
- (15)Use of other components not approved by the manufacturer
- (16)Damages resulted from improper transportation
- (17)**Filing a Chargeback while in possession of the bike**
- (18)**Riding a bike with an unresolved technical issue that results in further damage**
- (19)**Riding a bike damaged during shipping therefore causing further damage**
- (20) **Second owner or purchased a demo unit from a dealer**
- (21) **Paint and other cosmetic defects are not covered under warranty**



[info@wickedelectricbikes.com](mailto:info@wickedelectricbikes.com)

+1 (888) 531-9311

Find more information, new bikes, parts and accessories at

[www.wickedthumb.com](http://www.wickedthumb.com)

## APPENDIX A

### 750S/Suspension Fork Upgrade Front Brake Installation

The caliper mounting assembly will arrive detached from your suspension forks. Please note the position of the caliper mount, 180mm disc spacer and caliper when removing it from the packing.

Remove the two allen bolts on the left front fork and Attach the brake caliper mount to with angled leg placed up as shown below . Apply blue threadlocker if available and tighten to 50 inch lbs. **Do not overtighten the bolts** as this may lead to the mount cracking under heavy braking.

Place 180mm spacer with Up arrow facing forward and up between caliper and caliper mount. Shorter bolt with washers will be placed in the top position with the longer bolt in the bottom position. All washers go between the bolt head and caliper. Thread in hand tight and return to the 'Install front wheel' section to continue assembly.

